

Rehabilitation of Colorado Ave Bus Loop Facility (5409 14th St NW)

05/15/2019



Bus Loop Facilities

- WMATA owns 3 Bus Loop Facilities in DC:
 - Colorado Ave – 5409 14th St NW
 - Chevy Chase – 5720 Connecticut Ave NW
 - Calvert Street – 1971 Calvert St NW
- All Facilities were inherited in the 1960's from Capital Transit when WMATA was founded
- All Facilities are in a state of disrepair; WMATA is packaging all 3 Rehabilitations as one construction project

Colorado Avenue Facility



Chevy Chase Facility



Calvert Street Facility



Scope of Rehabilitation Work

EXTERIOR BUILDING

- Replace all doors & windows; Repair Copula
- Power wash entire brick exterior
- Replace Portico Columns & Roof
- Replace/Repair Canopy, Columns, & Lighting
- Repair Roofing and Drainage Gutters
- Underground utility connections

INTERIOR BUILDING

- Install New Restroom, Drinking Fountains & Upgrades to Plumbing System
- Install New Janitor Room
- Install New Lighting
- Install New Security System
- Clean all Wall and Floor Tile

SITework

- Replace Asphalt Pavement & Concrete Sidewalks
- Install Concrete Pavement Bus Pads
- Install Electric Bus Charging Structure infrastructure (For Future Use)
- New Landscaping** (New trees, bushes, and ground cover; **Dependent on final Storm Water Management Plan) & Fencing

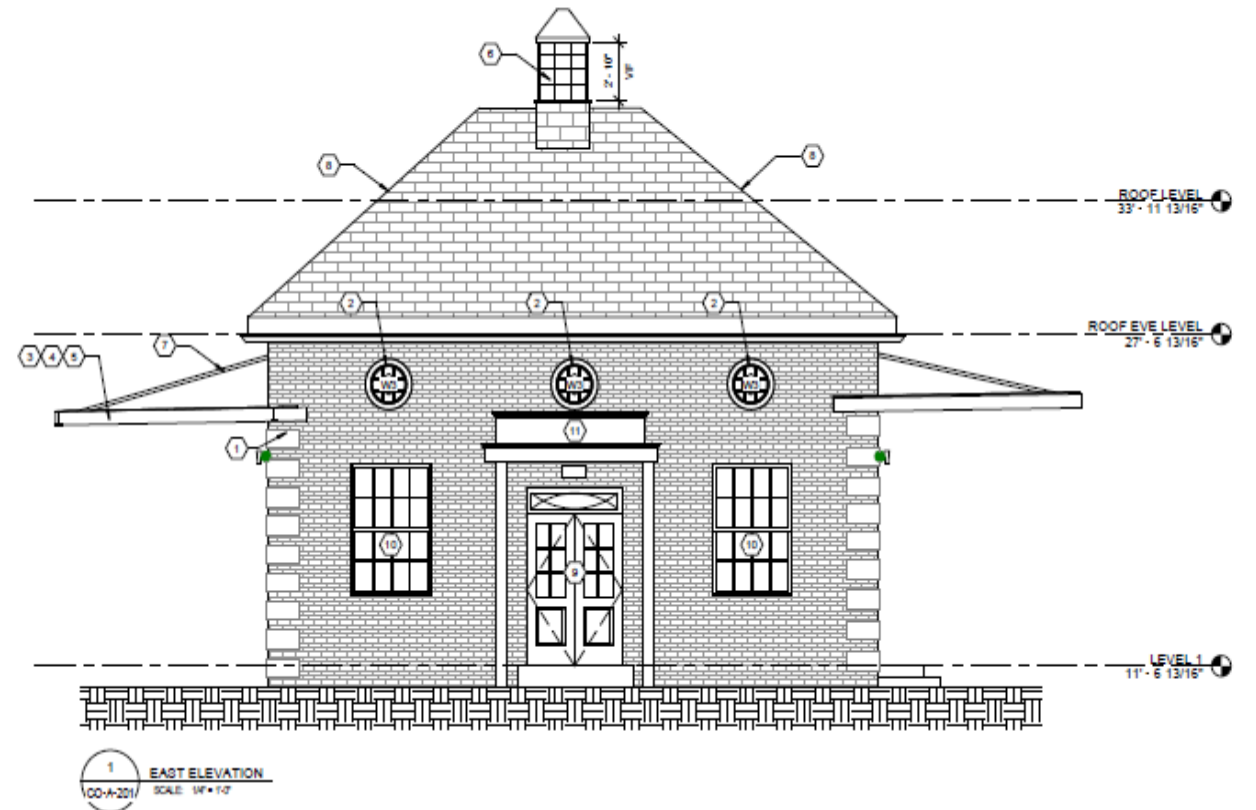
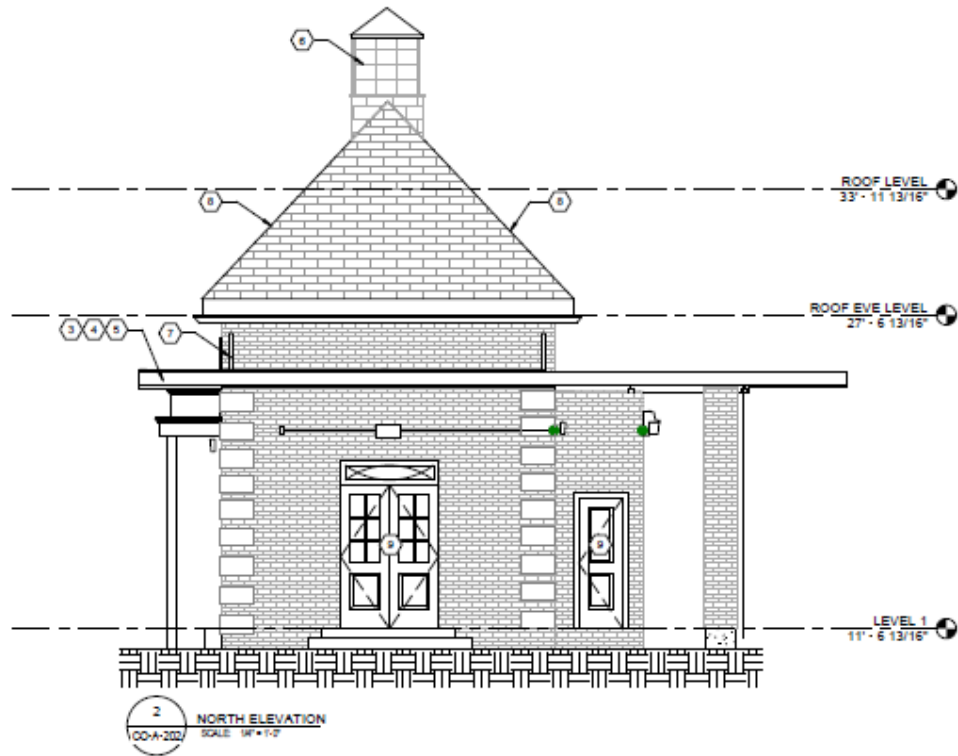
Colorado Ave Facility – Existing Exterior



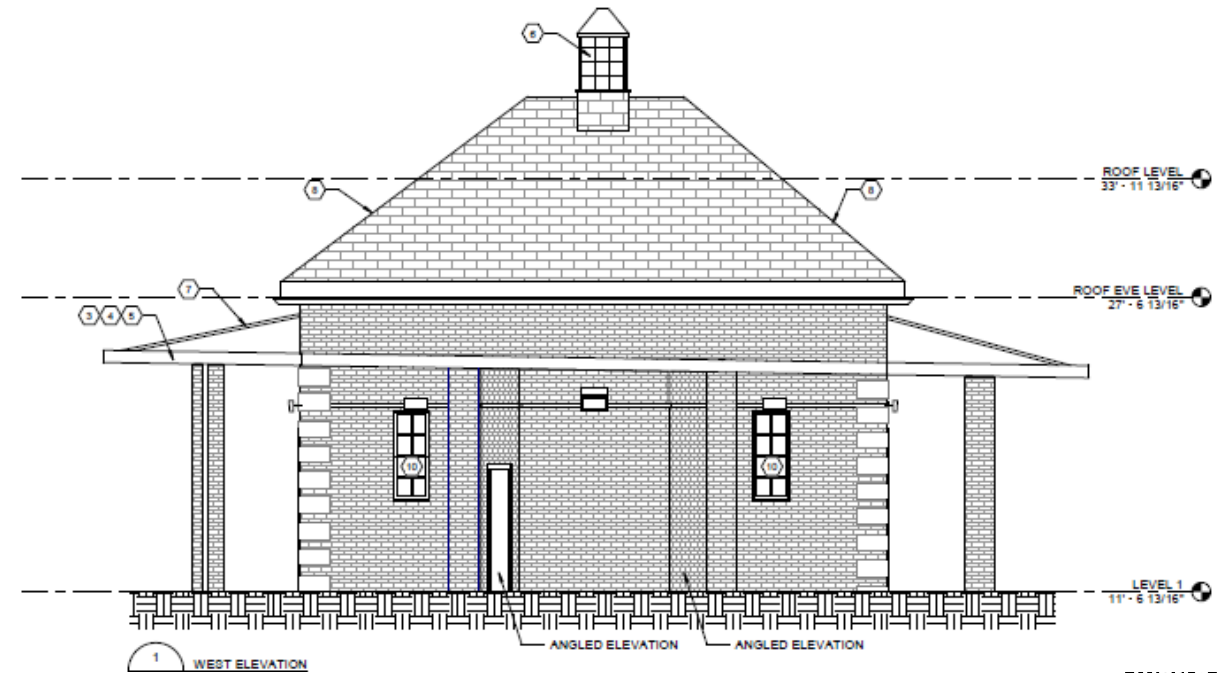
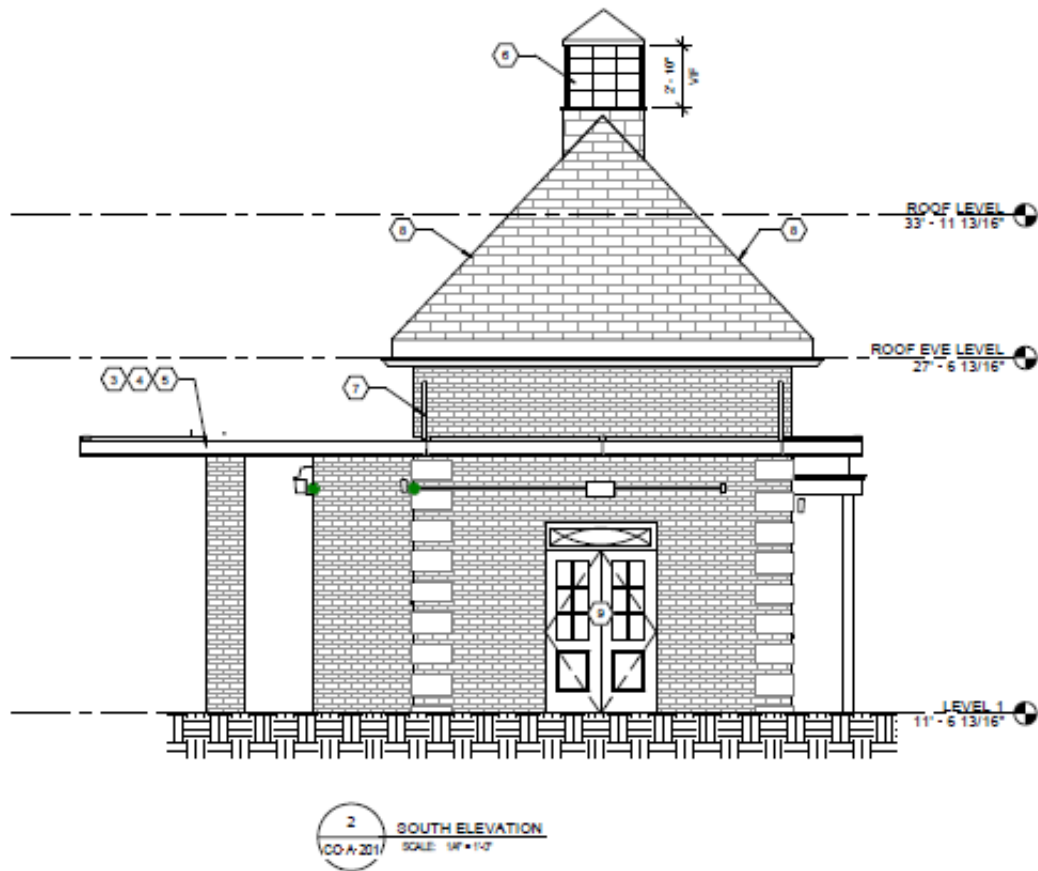
Colorado Ave Facility – Existing Canopy



Elevations – North (top) and East (bottom)



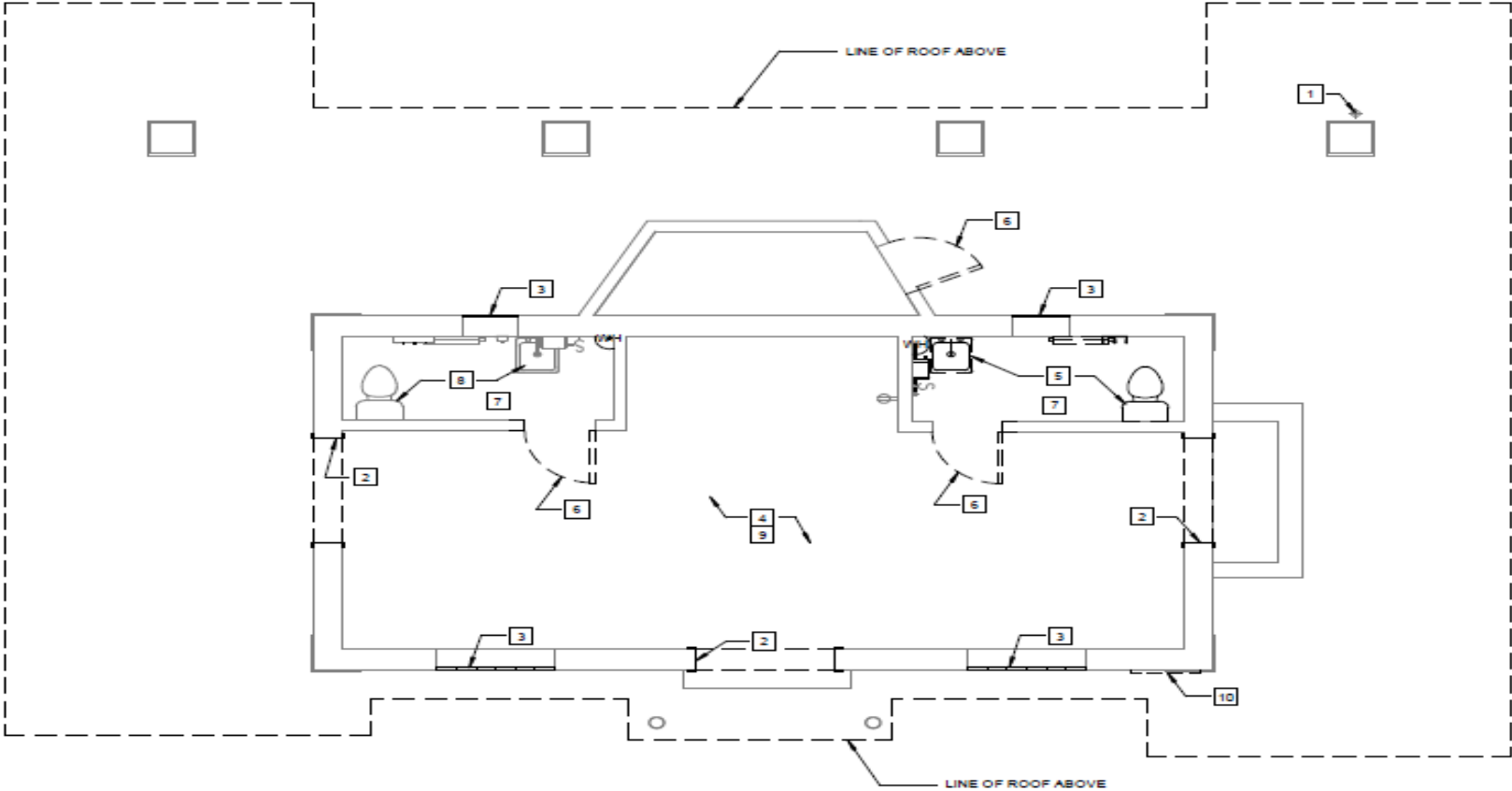
Elevations – South (top) and West (bottom)



Colorado Ave Facility – Existing Interior



Floor Plan - Demolition



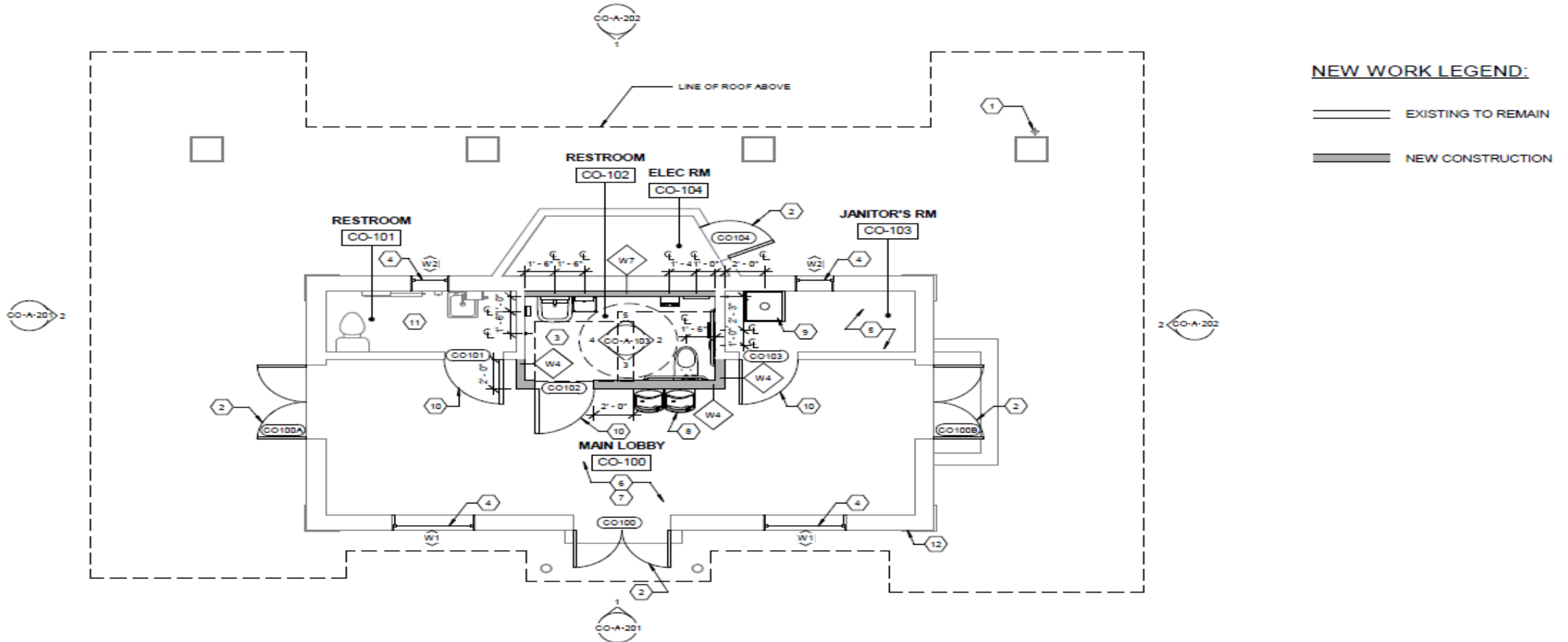
DEMO LEGEND:

- ===== EXISTING TO REMAIN
- EXISTING TO BE REMOVED

1 OVERALL FLOOR PLAN - DEMOLITION
CC-A-101 SCALE: 1/4" = 1'-0"



Floor Plan – New Work

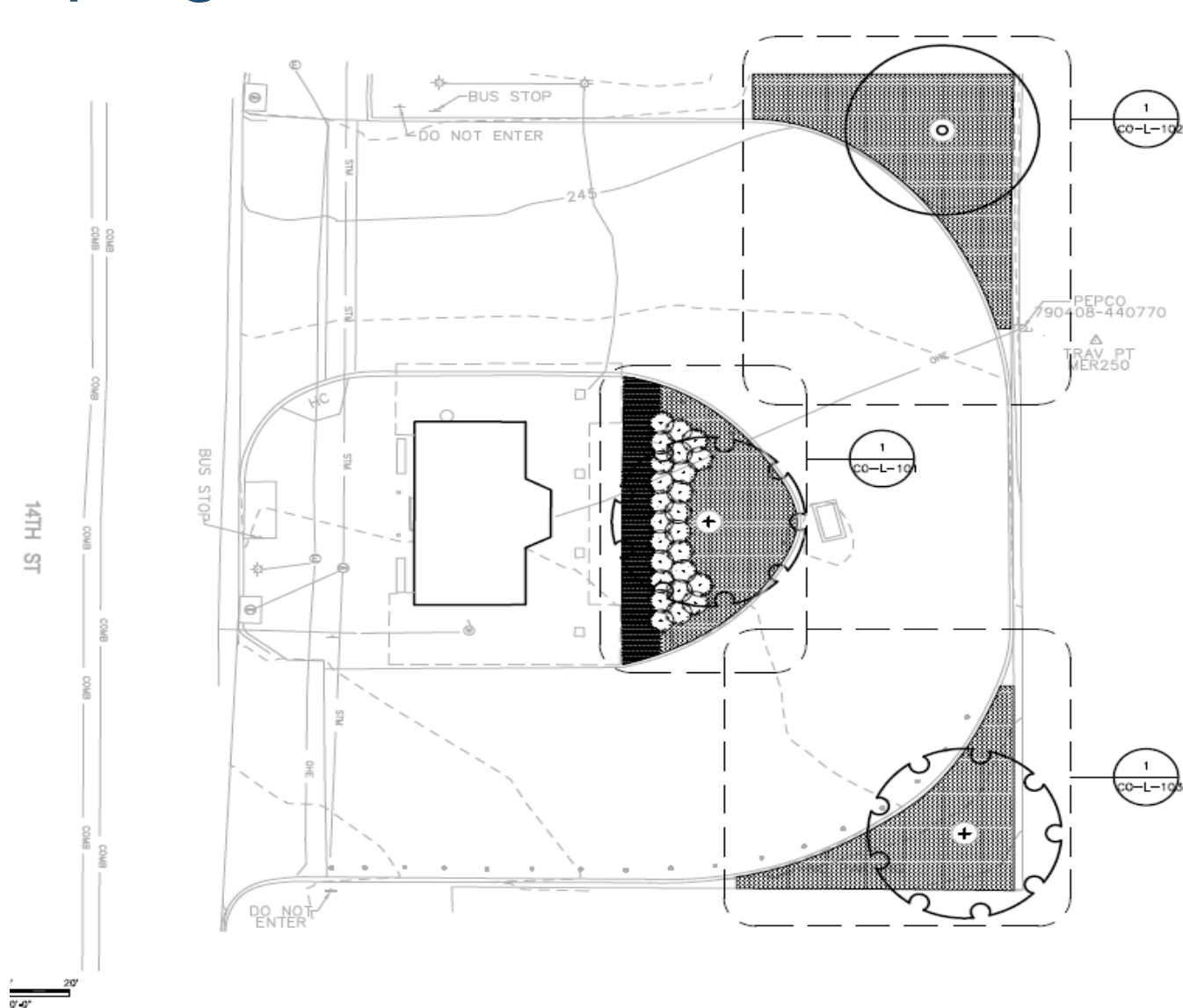


1
CO-A-103
OVERALL FLOOR PLAN - NEW WORK
SCALE: 1/4" = 1'-0"

Colorado Ave Facility – Sitework & Landscaping



Landscaping Plan



GENERAL NOTES:

1. PLANT SYMBOLS, AS DRAWN, TAKE PRECEDENCE OVER NOTED QUANTITIES
2. CONTRACTOR TO VERIFY ALL DRAWN QUANTITIES
3. PLANTING LOCATIONS, AS DRAWN, ARE FIXED AND NOT APPROXIMATE
4. CONTRACTOR TO FIELD STAKE PLANTING LOCATIONS AS PER SPECIFICATION 329300 PRIOR TO INSTALLATION
5. RECOMMENDED TREE SPECIES TO BE REVIEWED AND APPROVED BY WMATA
6. PLACE 4' MULCH RING AT EACH TREE. DO NOT INSTALL TURF/SOD WITHIN OR UNDER MULCH RING
7. REFER TO CIVIL DRAWINGS FOR PATH, CURB, ROADWAY AND GRADING

PLANTING SCHEDULE

KEY	QTY	BOTANICAL NAME	COMMON NAME	SIZE	ROOT	SPACING	COMMENTS
SHADE TREES							
GT	1	<i>Gleditsia triacanthos</i>	Honey Locust	3" Cal.	B&B	Per plan	Full, Symmetrical, 7' Limbed Clear
ORNAMENTAL TREES							
NS	1	<i>Nyssa sylvatica</i>	Black Gum	3" Cal.	B&B	Per plan	Full, Symmetrical, 7' Limbed Clear
SHRUBS							
HQ	25	<i>Hydrangea quercifolia</i> 'Sike's Dwarf'	Sike's Dwarf Oakleaf Hydrangea	24-36" ht.	Container	Per plan	Full
PERENNIALS & GROUNDCOVERS							
hc	956	<i>Hypericum calycinum</i>	St. John's Wort	1 Gal.	Container	18" O.C.	
lm	280	<i>Liriope muscari</i> 'Variegata'	Variegated Lily Turf	1 Gal.	Container	12" O.C.	

Current Schedule

- Complete Design/Code Reviews Fall 2019
- Construction Contract Procurement Fall 2019 to Winter 2020
- Issue Construction NTP Late Winter 2020
- Pre-Administration/Construction Permits Late Winter/Spring 2020
- Construction Period Spring 2020 to Late Fall 2020