




D50 14th St

14+Colorado Av-Waterfront
via Columbia Heights, Logan Circle, Smithsonian, and The Wharf

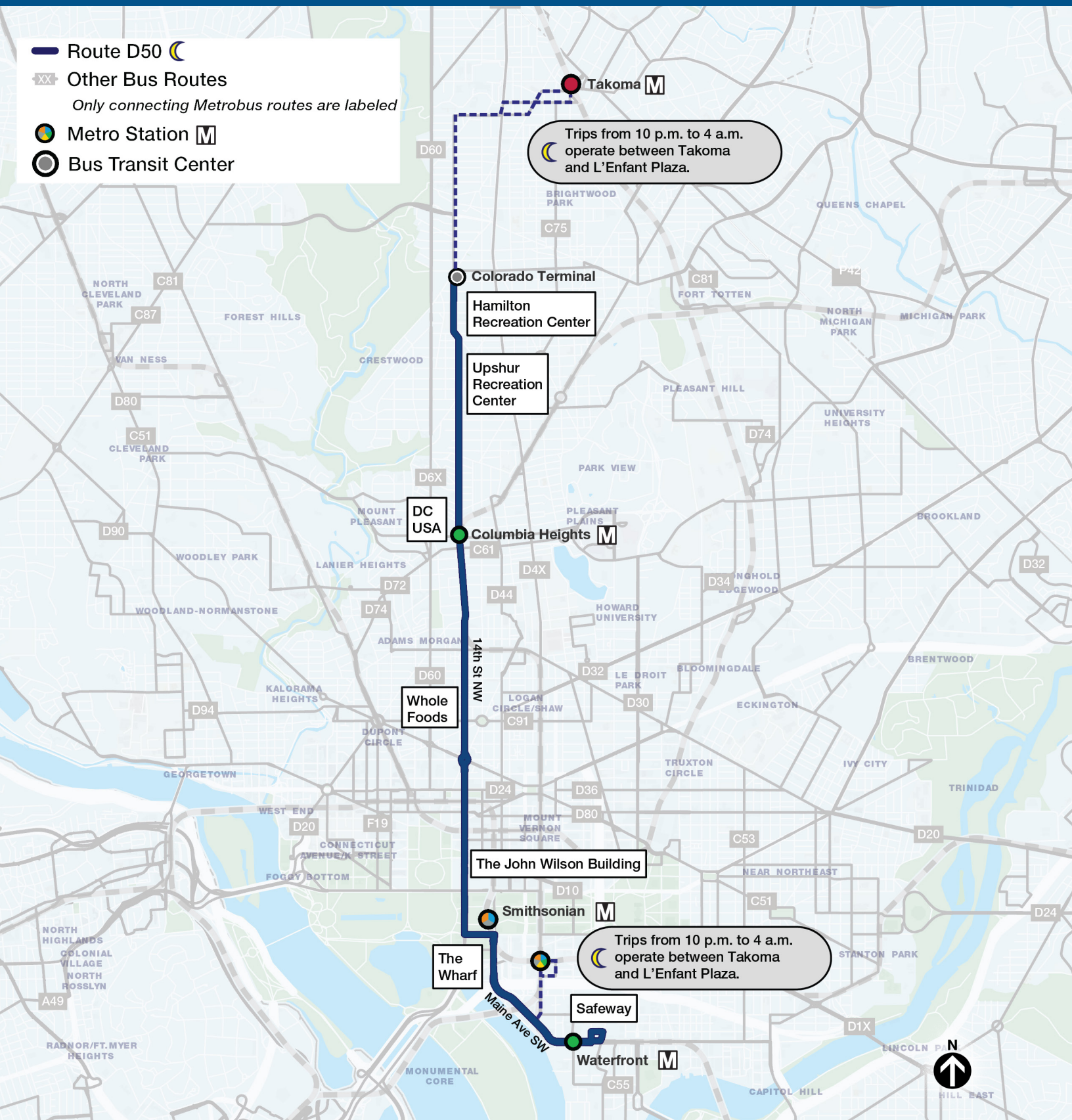
Route D50 

 Other Bus Routes

Only connecting Metrobus routes are labeled

 Metro Station 

 Bus Transit Center



Compare to these old routes:
52,54,59

D50 14th St

14+Colorado Av-Waterfront

via Columbia Heights, Logan Circle, Smithsonian, and The Wharf

Frequency

Weekdays					
Hours of operation: 24 Hours					
Early Morning 4:00 - 6:00 a.m.	Morning Rush 6:00 - 9:00 a.m.	Midday 9:00 a.m. - 3:00 p.m.	Afternoon Rush 3:00 - 7:00 p.m.	Evening 7:00 - 9:00 p.m.	Late/Overnight 9:00 p.m. - 4:00 a.m.
15 min.**	8-16 min.*	16 min.	12 min.	20 min.	20 min.

Saturday			Sunday		
Hours of operation: 24 Hours			Hours of operation: 24 Hours		
Early 4:00 - 6:00 a.m.	Daytime 6:00 a.m. - 9:00 p.m.	Late 9:00 p.m. - 4:00 a.m.	Early 4:00 - 6:00 a.m.	Daytime 6:00 a.m. - 9:00 p.m.	Late 9:00 p.m. - 4:00 a.m.
20 min.	16 min.	20 min.	20 min.	20 min.	20 min.

*Ranges reflect differences in frequency by direction.

**Every other trip is extended to Takoma when D5X is not running.

Frequencies shown are averages

Cost to ride: regular fare



**Part of 20-minute Frequent
Service Network**



**Part of 12-minute Frequent
Service Network between
Colorado Terminal and 14th
St/F St NW, along with Route
D5X**

For complete timetables, visit wmata.com/timetables

