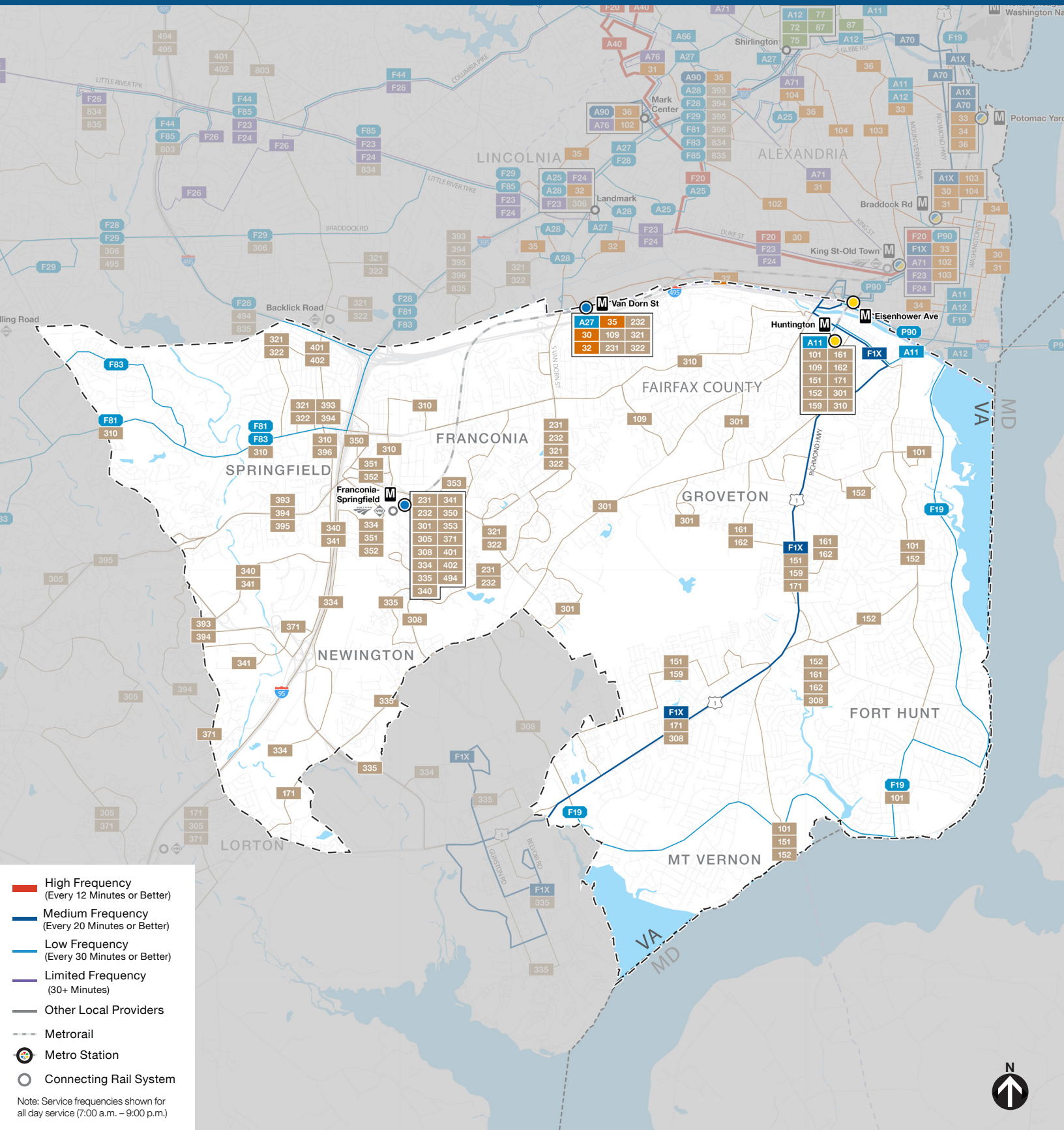


NEIGHBORHOOD PROFILE: MOUNT VERNON, SPRINGFIELD, FRANCONIA & HUNTINGTON



NEIGHBORHOOD PROFILE: MOUNT VERNON, SPRINGFIELD, FRANCONIA & HUNTINGTON

If you currently ride...	Your new route could be...	Description of Route(s)
10A	A11	Route A11 has a similar routing to the current 10A.
11Y	F19	Route F19 provides the same route, frequency, and hours of operation as the current 11Y.
17G	F29, F28	Two routes will replace the current 17G: <ul style="list-style-type: none"> - Route F29 runs between George Mason and the Pentagon. The F29 has a similar routing to the current 17G between George Mason University and the Capital Beltway. - Route F28 runs between Kings Park West and the Pentagon. The F28 has a similar routing to the current 17G between Braddock Rd/Southampton Dr and Pentagon Station. The F28 provides a connection to Kings Park West.
17K	F28	Route F28 has a similar routing to the current 17K, and extends to serve Olde Forge Park neighborhood via Twinbrook Rd.
18G	F83	Route F83 has a similar routing to the current 18G.
18J	Fairfax Connector 310, 321, 322	Three routes provide an alternative to the current 18J: <ul style="list-style-type: none"> - Fairfax Connector Route 310 has a similar routing to the current 18J on Old Keene Mill Rd between Commerce St (Springfield Plaza) and Rolling Valley P&R. - Fairfax Connector Route 321 (to Franconia-Springfield Station) and Route 322 (from Franconia-Springfield Station) provide connections to portions of Backlick Rd and Commerce St on the current 18J and rail connections at Franconia-Springfield Station.
18P	F81	Route F81 has a similar routing to the current 18P.
REX	F1X	Route F1X has a similar routing to the current REX.