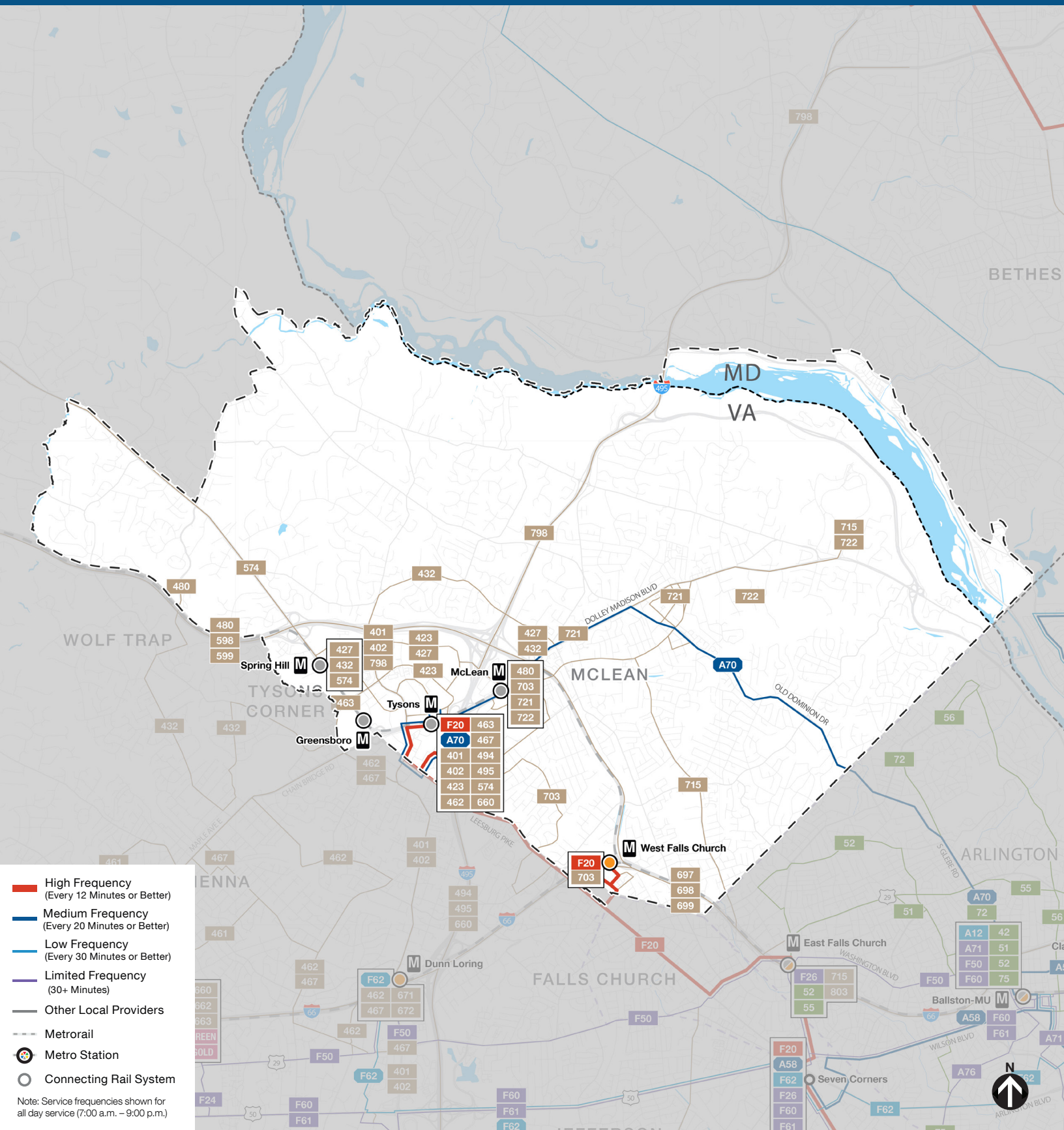


NEIGHBORHOOD PROFILE: MCLEAN & TYSONS CORNER



NEIGHBORHOOD PROFILE: MCLEAN & TYSONS CORNER

If you currently ride...	Your new route could be...	Description of Route(s)
23A	A70, A11	Two routes will replace the current 23A: - Route A70 runs between Tysons Station and Potomac Yard Station. The A70 has a similar routing to the current 23A between Tysons Station and S Kenmore St/24th St S. The A70 provides a connection to Potomac Yard Station. - Route A11 runs between Huntington and Pentagon Station. The A11 has a similar routing to the current 23A between Mt Vernon Ave/Russell Rd and S Eads St/18th St S. The A11 provides connections to Braddock Rd Station, Old Town Alexandria and Huntington Station.
23T	A70, A12	Two routes will replace the current 23T: - Route A70 runs between Tysons Station and Potomac Yard Station. The A70 has a similar routing to the current 23T between Tysons Station and S Kenmore St/24th St S. The A70 provides a connection to Potomac Yard Station. - Route A12 runs between Ballston Station and Hunting Point. The A12 has a similar routing to the current 23T between Ballston Station and Shirlington Transit Center. The A12 provides connections to Braddock Rd Station, Old Town Alexandria and Hunting Point.
28A	F20	Route F20 has a similar routing to the current 28A.