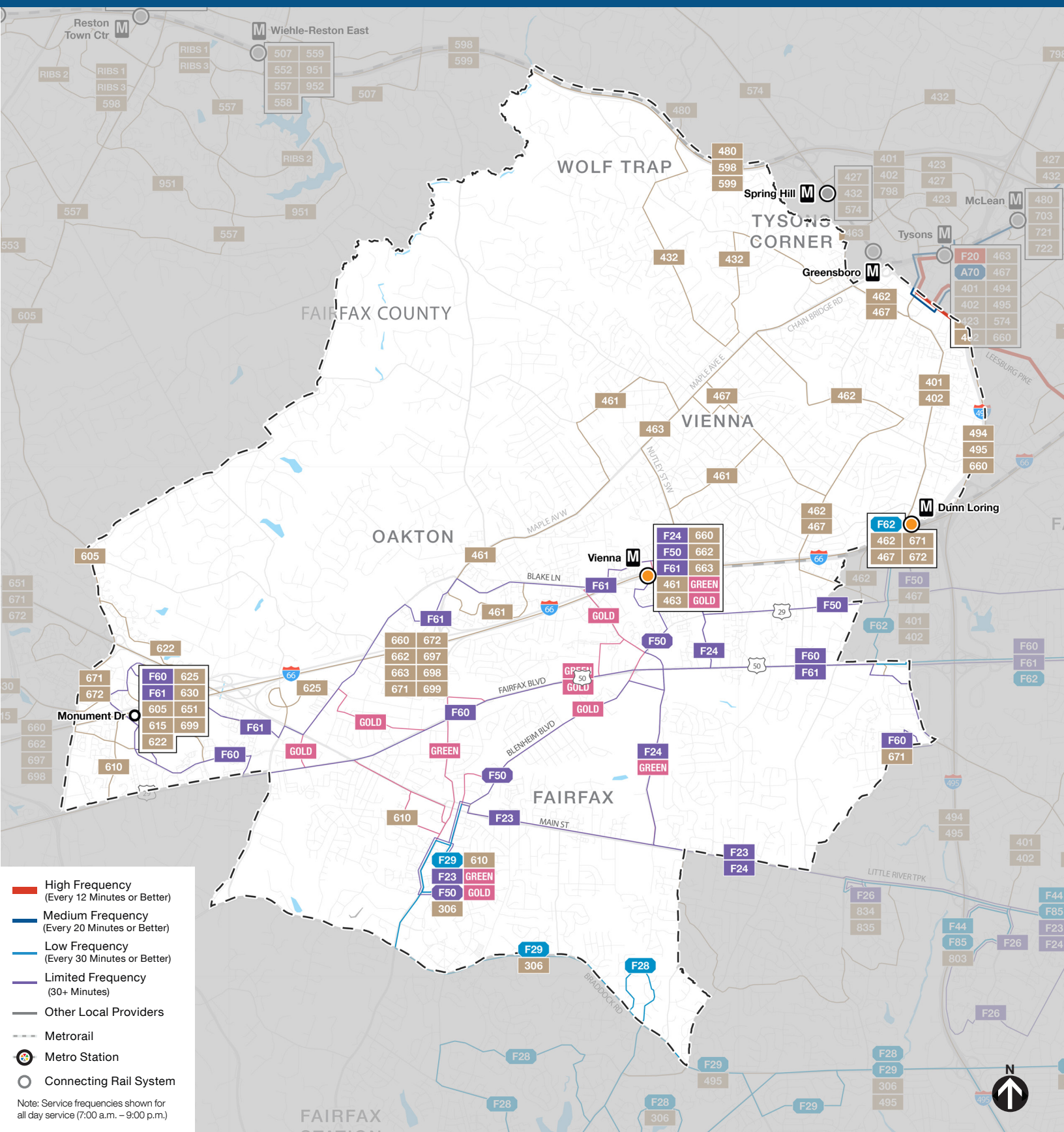


NEIGHBORHOOD PROFILE: CITY OF FAIRFAX & VIENNA



NEIGHBORHOOD PROFILE: CITY OF FAIRFAX & VIENNA

If you currently ride...	Your new route could be...	Description of Route(s)
17G	F29, F28	Two routes will replace the current 17G: <ul style="list-style-type: none"> - Route F29 runs between George Mason and the Pentagon. The F29 has a similar routing to the current 17G between George Mason University and the Capital Beltway. - Route F28 runs between Kings Park West and the Pentagon. The F28 has a similar routing to the current 17G between Braddock Rd/Southampton Dr and Pentagon Station. The F28 provides a connection to Kings Park West.
1A	F60, A58, F62	Three routes will replace the current 1A: <ul style="list-style-type: none"> - Route F60 runs between Ballston Station and Fair Oaks Mall. The F60 has a similar routing to the current 1A between Arlington Blvd/Nutley St and Ballston Station. The F60 provides connections to Fairfax Government Center and Fair Oaks Mall. - Route A58 runs between Seven Corners Transit Center and Farragut Square. The A58 has a similar routing to the current 1A between Seven Corners and Ballston MU Station. The A58 provides connections to Clarendon Station, Court House Station, Rosslyn Station, Farragut West Station and Farragut Square. - Route F62 runs between Dunn Loring-Merrifield Station and Rosslyn Station. The F62 has a similar routing to the current 1A between Arlington Blvd/Gallows Rd and Seven Corners. The F62 provides connections to Dunn Loring-Merrifield Station, Court House Station and Rosslyn Station.
1C	F60, F62	Two routes will replace the current 1C: <ul style="list-style-type: none"> - Route F60 runs between Ballston Station and Fair Oaks Mall. The F60 has a similar routing to the current 1C between Gallows Rd/Arlington Blvd and Fair Oaks Mall. The F60 provides connections to Seven Corners and Ballston Station. - Route F62 runs between Dunn Loring-Merrifield Station and Rosslyn Station. The F62 has a similar routing to the current 1B between Dunn Loring-Merrifield Station and Seven Corners. The F62 provides connections to Court House Station and Rosslyn Station.
28A	F20	Route F20 has a similar routing to the current 28A.
29K	F23, F24	Two routes will replace the current 29K: <ul style="list-style-type: none"> - Route F23 runs between George Mason University and King St-Old Town. The F23 has a similar routing to the current 29K. - Route F24 runs between Vienna Station and King St-Old Town. The F24 has a similar routing to the current 29K between Little River Tpke/Pickets Rd and King St. The F24 provides connections to Vienna Station.
29N	F24, F23	Two routes will replace the current 29N: <ul style="list-style-type: none"> - Route F24 has a similar routing to the current 29N. - Route F23 has a similar routing to the current 29N between Little River Tpke/Pickets Rd and King St. The F23 provides connections to George Mason University.
2B	F50, F61, F60	Three routes will replace the current 2B: <ul style="list-style-type: none"> - Route F50 runs between Ballston Station and George Mason University. The F50 has a similar routing to the current 2B between Ballston Station and Route 29/Blake Ln. The F50 provides connections to Vienna Station, Fairfax City and George Mason University. - Route F61 has a similar routing between Fair Oaks Mall and Vienna Station along Blake Ln and Jermantown Rd. The F61 continues from Vienna Station to Ballston Station via Arlington Blvd. - Route F60 runs between Ballston Station and Fair Oaks Mall. The F60 provides a direct connection for current 2B riders between Ballston Station and Fair Oaks Mall via Arlington Blvd.