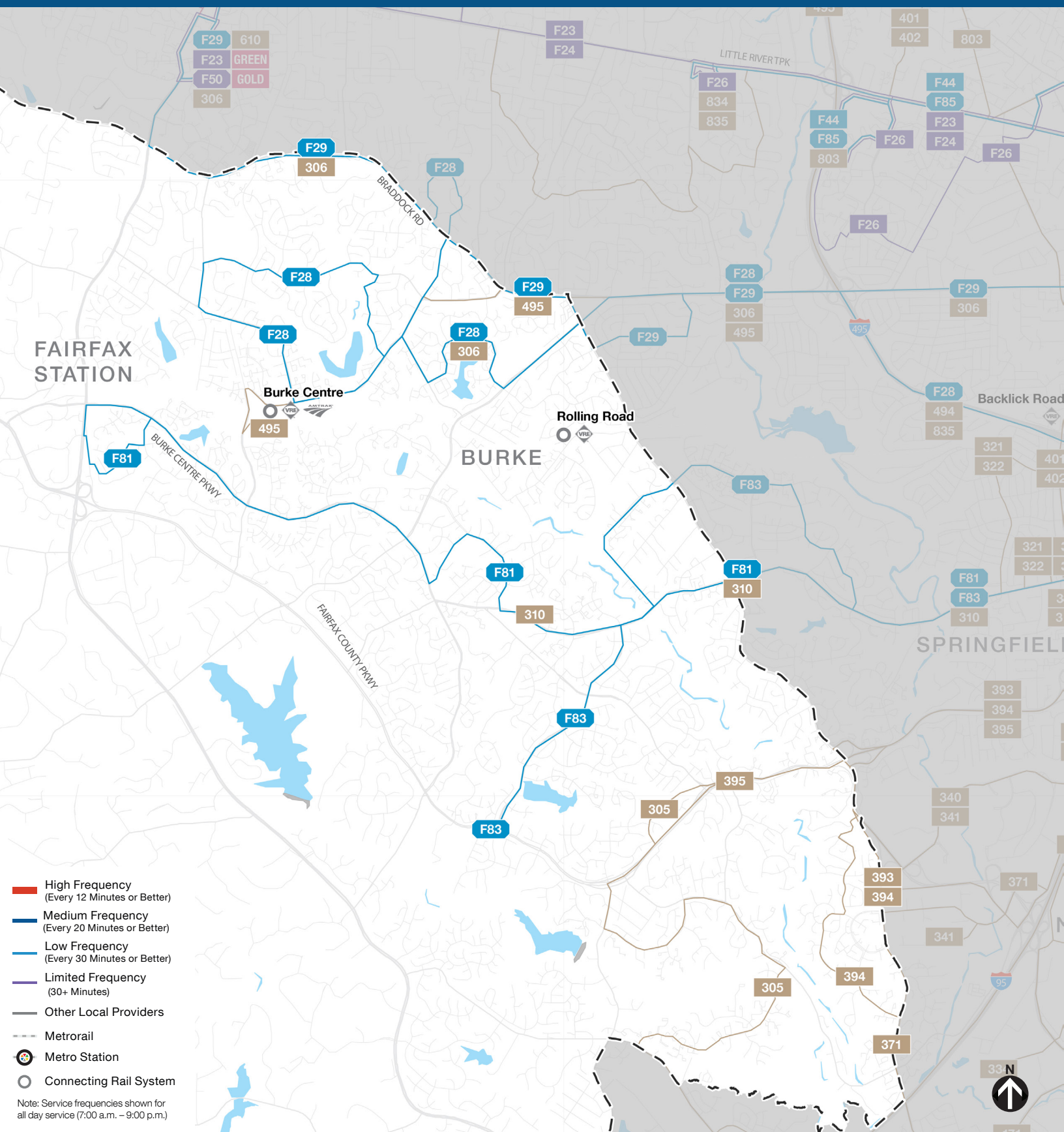


NEIGHBORHOOD PROFILE: BURKE & CLIFTON



NEIGHBORHOOD PROFILE: BURKE & CLIFTON

If you currently ride...	Your new route could be...	Description of Route(s)
17B	F28, F29	Two routes will replace the current 17B: <ul style="list-style-type: none"> - Route F28 runs between Kings Park West and Pentagon Station. The F28 has a similar routing to the current 17B between Zion Dr/Guinea Rd and Commonwealth Blvd and on portions of Braddock Rd between Danbury Forest Dr and Queensbury Ave. The F28 provides a connection to Kings Park West. - Route F29 runs between George Mason and Pentagon Station. The F29 has a similar routing to the current 17B between Pentagon Station and Braddock Rd/Backlick Rd.
17G	F29, F28	Two routes will replace the current 17G: <ul style="list-style-type: none"> - Route F29 runs between George Mason and the Pentagon. The F29 has a similar routing to the current 17G between George Mason University and the Capital Beltway. - Route F28 runs between Kings Park West and the Pentagon. The F28 has a similar routing to the current 17G between Braddock Rd/Southampton Dr and Pentagon Station. The F28 provides a connection to Kings Park West.
17K	F28	Route F28 has a similar routing to the current 17K, and extends to serve Olde Forge Park neighborhood via Twinbrook Rd.
18G	F83	Route F83 has a similar routing to the current 18G.
18J	Fairfax Connector 310, 321, 322	Three routes provide an alternative to the current 18J: <ul style="list-style-type: none"> - Fairfax Connector Route 310 has a similar routing to the current 18J on Old Keene Mill Rd between Commerce St (Springfield Plaza) and Rolling Valley P&R. - Fairfax Connector Route 321 (to Franconia-Springfield Station) and Route 322 (from Franconia-Springfield Station) provide connections to portions of Backlick Rd and Commerce St on the current 18J and rail connections at Franconia-Springfield Station.
18P	F81	Route F81 has a similar routing to the current 18P.