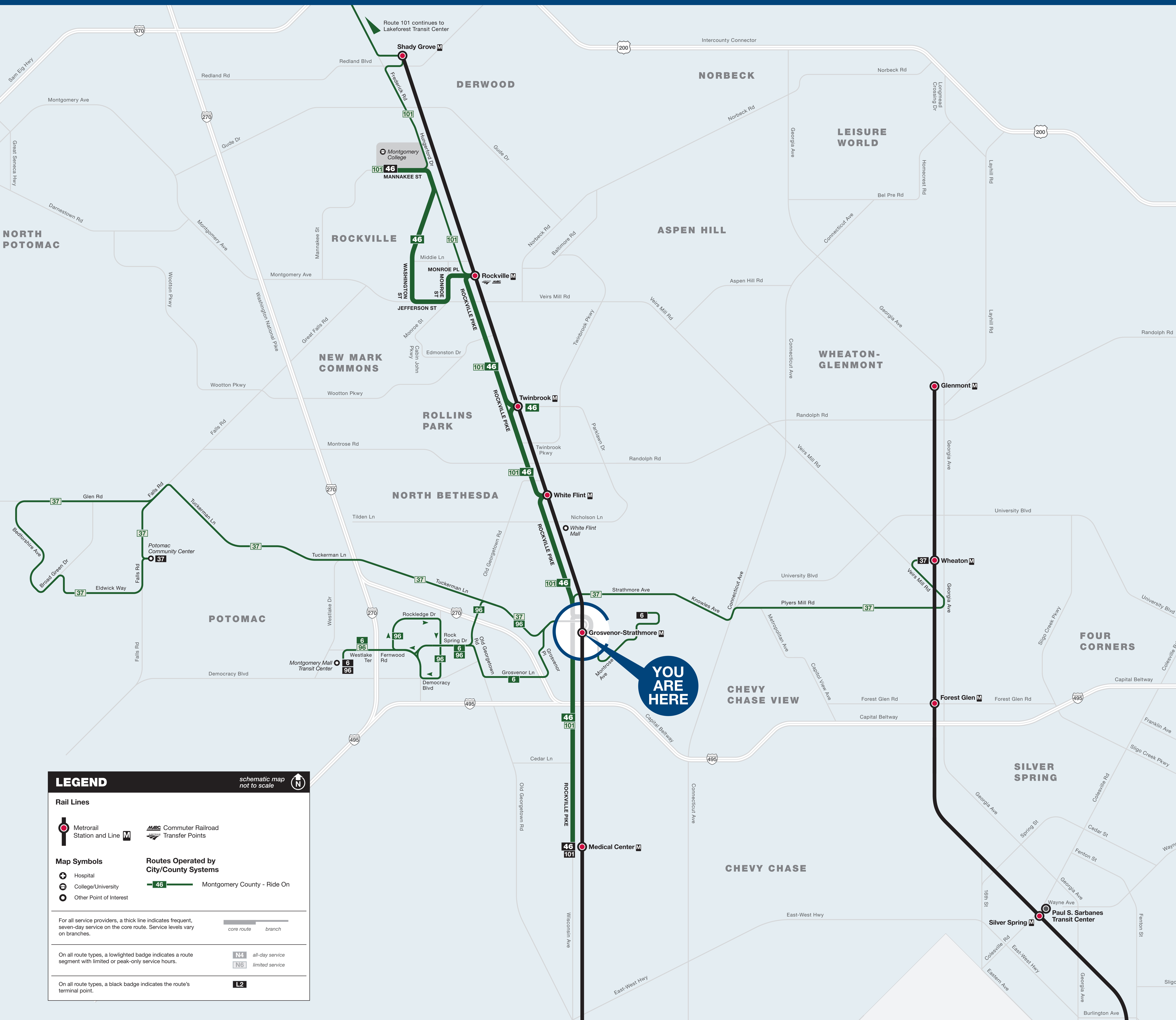




Bus Service from Grosvenor-Strathmore



LEGEND schematic map not to scale

Rail Lines

- Metrorail Station and Line
- Commuter Railroad Transfer Points

Map Symbols

- Hospital
- College/University
- Other Point of Interest

Routes Operated by City/County Systems

- Montgomery County - Ride On

For all service providers, a thick line indicates frequent, seven-day service on the core route. Service levels vary on branches.

On all route types, a lighted badge indicates a route segment with limited or peak-only service hours.

On all route types, a black badge indicates the route's terminal point.

core route branch

all-day service limited service

L2

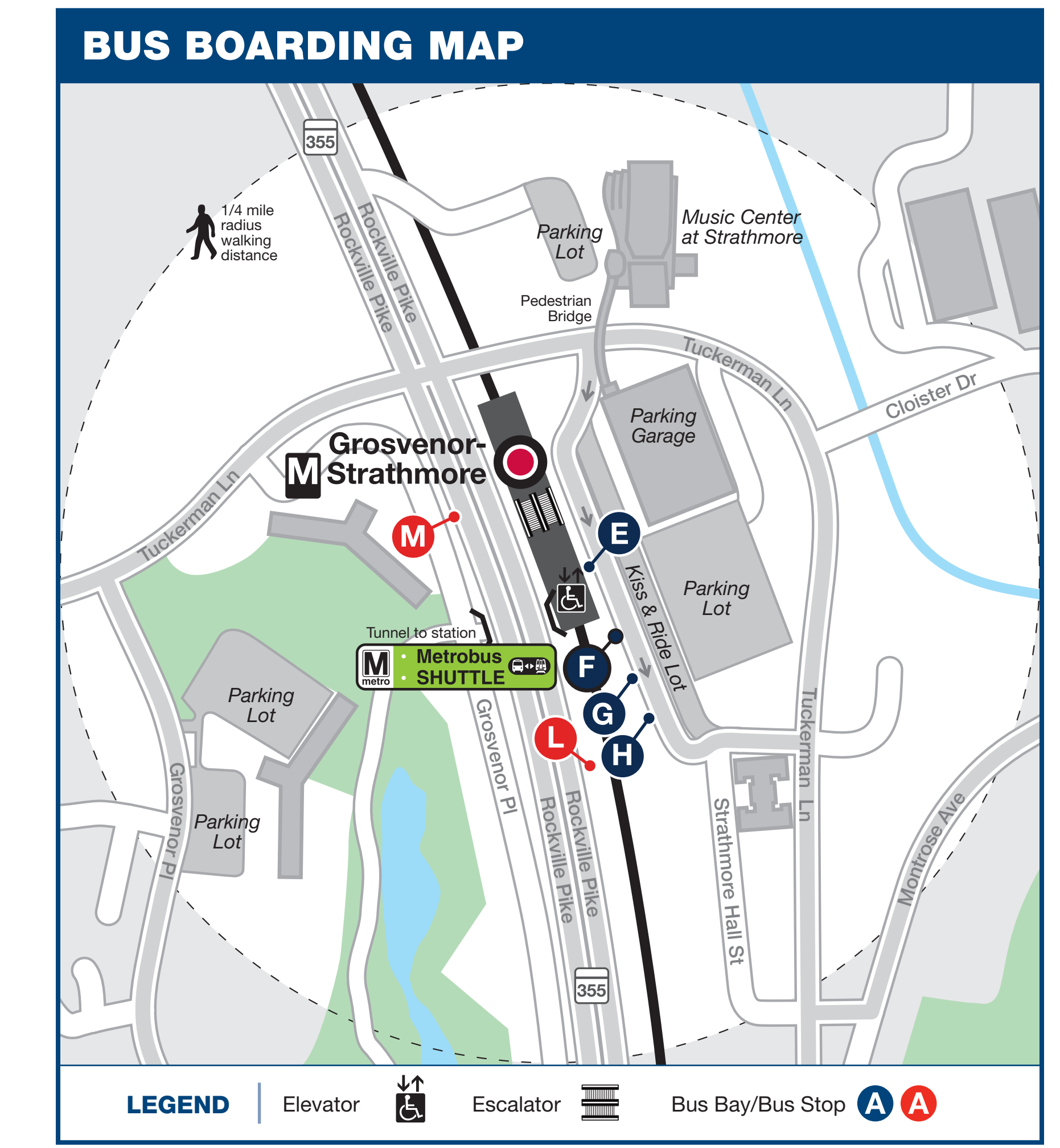
BUS SERVICE AND BOARDING LOCATIONS

The table shows approximate minutes between buses; check schedules for full details

ROUTE	DESTINATION	BOARD AT BUS BAY	MONDAY TO FRIDAY				SATURDAY		SUNDAY	
			AM RUSH	MIDDAY	PM RUSH	EVENING	DAY	EVENING	DAY	EVENING
RIDE ON-MONTGOMERY COUNTY										
6	Parkside	H	30	30	30	30	--	--	--	--
6	Montgomery Mall Transit Center	J	30	30	30	30	--	--	--	--
37	Wheaton	J	--	--	30-35	--	--	--	--	--
37	Potomac Community Center	J	30	--	30	--	--	--	--	--
46	Medical Center	E M	20	15	15-20	30-40	20-25	25-30	20-30	30
46	Montgomery College	L	20-25	15	15-20	30-40	20-25	25-30	20-30	30
96	Rock Spring Park	J	15-25	30#	15	30	--	--	--	--
101	Lakeforest Transit Center	L	10	--	10	--	--	--	--	--
101	Medical Center	M	10	--	10	--	--	--	--	--

M Metrobus **SHUTTLE** **F** During track work and/or rail shutdown events, this bus stop will also be served by Metro shuttle buses.

Midday trips extend to Montgomery Mall Transit Center.



metroAlerts

Through MetroAlerts, you can be notified of Metro service disruptions via email or text messages. MetroAlerts can be sent to computers, cellular phones, pagers or personal digital assistants capable of receiving data. MetroAlerts are limited to 140 characters to prevent them from being truncated when received as text messages. If further information on the incident is available, it is published on the website and a link to that information is included in the MetroAlert.

KNOW MORE. KNOW FIRST.

Sign up today at wmata.com/MetroAlerts

information wmata.com | 202-637-7000 | 202-638-3780

busETA and General Inquiries

Para busETA y información general, llame al 202-637-7000 (TTY 202-638-3780) o visite wmata.com.

정보나 busETA 또는 언어 지원 관련 문의는 202-637-7000 (TTY 202-638-3780) 으로 전화하십시오. 스페인어 문의는 1을 누르고, 기타 언어 관련 문의는 88을 누른 후 5를 누르십시오. 또는 wmata.com 을 방문하십시오.

metroAlerts

Sign up today at wmata.com/MetroAlerts

Metro is accessible. Metro es accesible. 메트로는 접속 가능합니다.