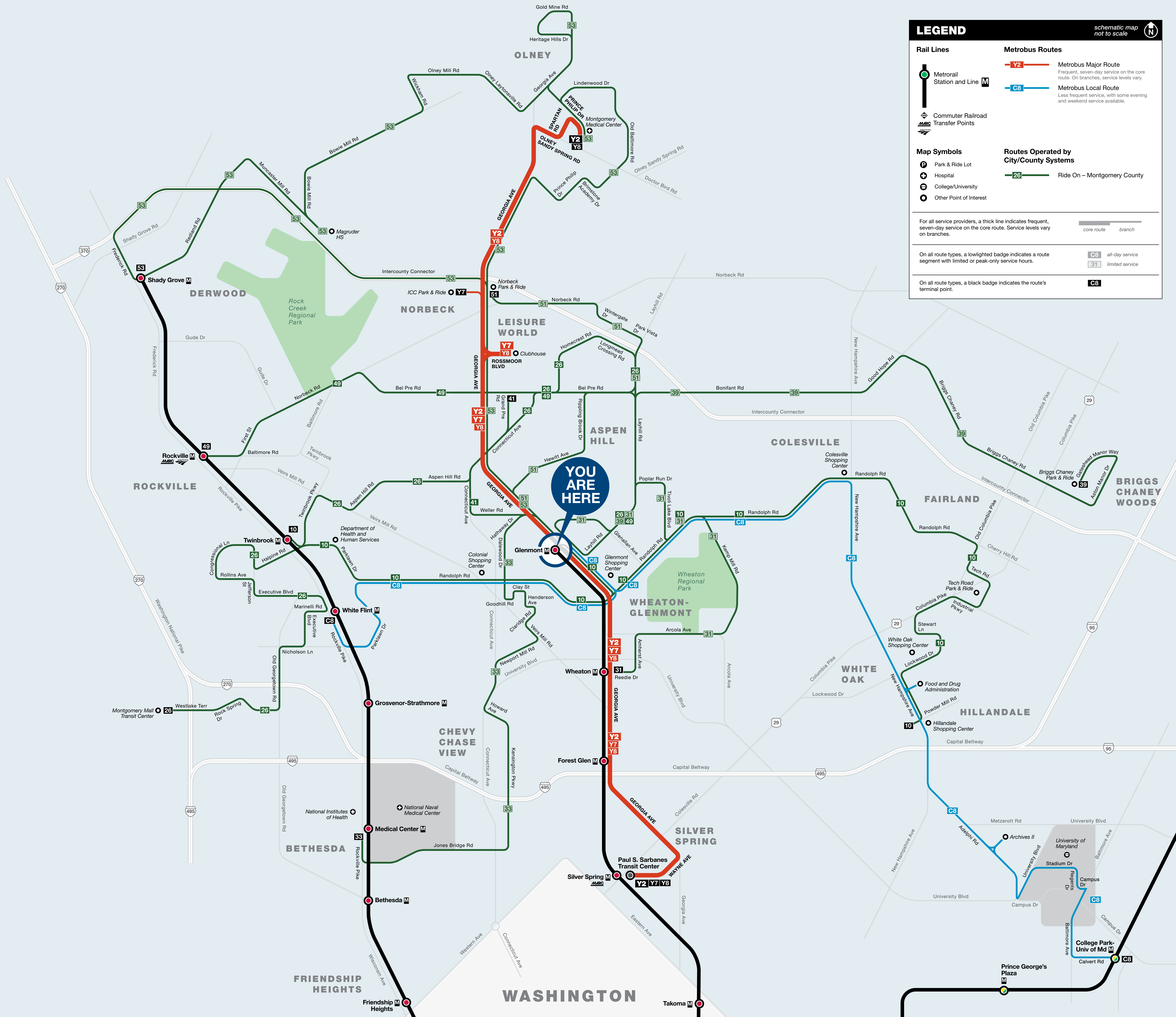




# Bus Service from Glenmont



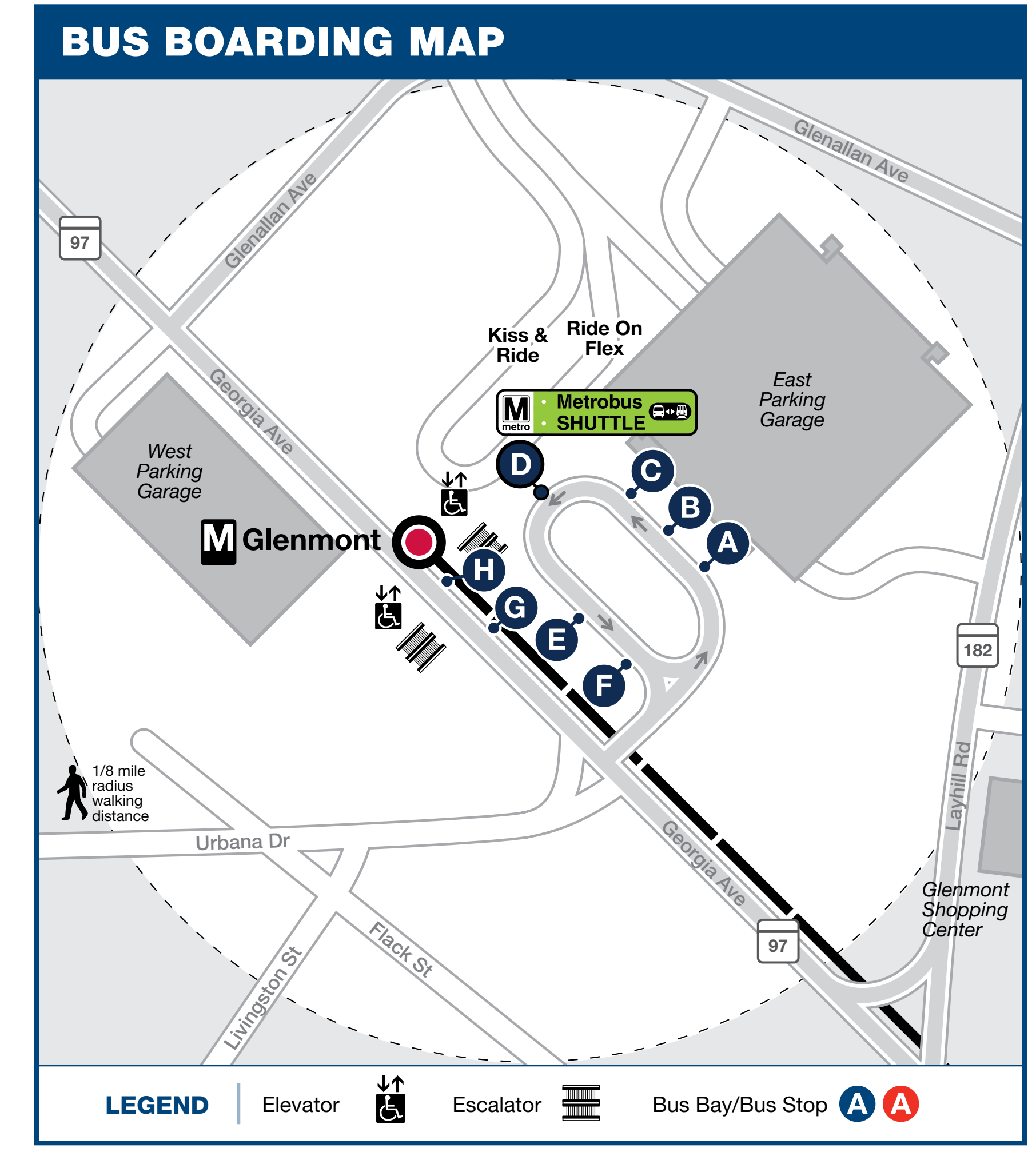
## BUS SERVICE AND BOARDING LOCATIONS

The table shows approximate minutes between buses; check schedules for full details

ROUTE	DESTINATION	BOARD AT BUS BAY	MONDAY TO FRIDAY				SATURDAY		SUNDAY	
			AM RUSH	MIDDAY	PM RUSH	EVENING	DAY	EVENING	DAY	EVENING
<b>COLLEGE PARK-WHITE FLINT LINE</b>										
<b>C8</b>	College Park-U of Md	E	60	60	60	60*	60	60	--	--
<b>C8</b>	White Flint	F	60	60	60	60	60	60	--	--
<b>GEORGIA AVE-MARYLAND LINE</b>										
<b>Y2 Y8</b>	Medstar Montgomery Medical Center	H	20-30	20-30	20	15-30	22-23	20-23	22-23	20-23
<b>Y2 Y7 Y8</b>	Paul S. Sarbanes Transit Center (Silver Spring)	D	10	15	10	15-30	20-23	22-24	20-23	22-24
<b>Y7</b>	ICC Park & Ride via Leisure World	H	20-30	30	20	--	--	--	--	--
<b>Y8</b>	Medstar Montgomery Med. Ctr via Leisure World	H	20-30	20-30	60	--	45	--	45	--
<b>RIDE ON-MONTGOMERY COUNTY</b>										
<b>10</b>	Hilldale	F	30	30	25	30-50	30	40	40	40
<b>10</b>	Twinbrook	F	30	30	25-30	40	30	40-45	40	40
<b>26</b>	Montgomery Mall Transit Center	B	20	20-30	15-20	35-45	30	35-45	30	35-45
<b>31</b>	Wheaton	C	60	--	60	--	--	--	--	--
<b>33</b>	Medical Center	A	45	--	45	--	--	--	--	--
<b>39</b>	Briggs Chaney Park & Ride	B	35-40*	--	35-50	--	--	--	--	--
<b>41</b>	Aspen Hill	B	45	45	45	45	45	45	45	--
<b>49</b>	Rockville	C	20	25-30	20-30	30-40	30-40	40	40	40
<b>51</b>	Norbeck Park & Ride	G	55-60	--	55	--	--	--	--	--
<b>53</b>	Shady Grove	A	50+	--	50+	--	--	--	--	--

**M** Metrobus Shuttle **C8** **D** During track work and/or rail shutdown events, this bus stop will also be served by Metro shuttle buses.

- \* **C8** does not serve FDA/FRC after 5:30 pm Monday to Friday.
- Does not serve Aston Manor/Briggs Chaney during AM Rush periods.
- + Does not serve ICC Park & Ride Lot during AM Rush periods.
- † Does not service Bowie Mill Rd during PM Rush periods; travels via Intercountry Connector.



**metroAlerts**

Through MetroAlerts, you can be notified of Metro service disruptions via email or text messages. MetroAlerts can be sent to computers, cellular phones, pagers or personal digital assistants capable of receiving data. MetroAlerts are limited to 140 characters to prevent them from being truncated when received as text messages. If further information on the incident is available, it is published on the website and a link to that information is included in the MetroAlert.

**KNOW MORE. KNOW FIRST.**

Sign up today at [wmata.com/MetroAlerts](http://wmata.com/MetroAlerts)

information [wmata.com](http://wmata.com) | 202-637-7000 | 202-638-3780

PHONE TTY

Para busETA y información general, llame al 202-637-7000 (TTY 202-638-3780) o visite [wmata.com](http://wmata.com).

**metroAlerts**

Sign up today at [wmata.com/MetroAlerts](http://wmata.com/MetroAlerts)

Metro is accessible. **Metro es accesible.**

메트로는 접속 가능합니다.