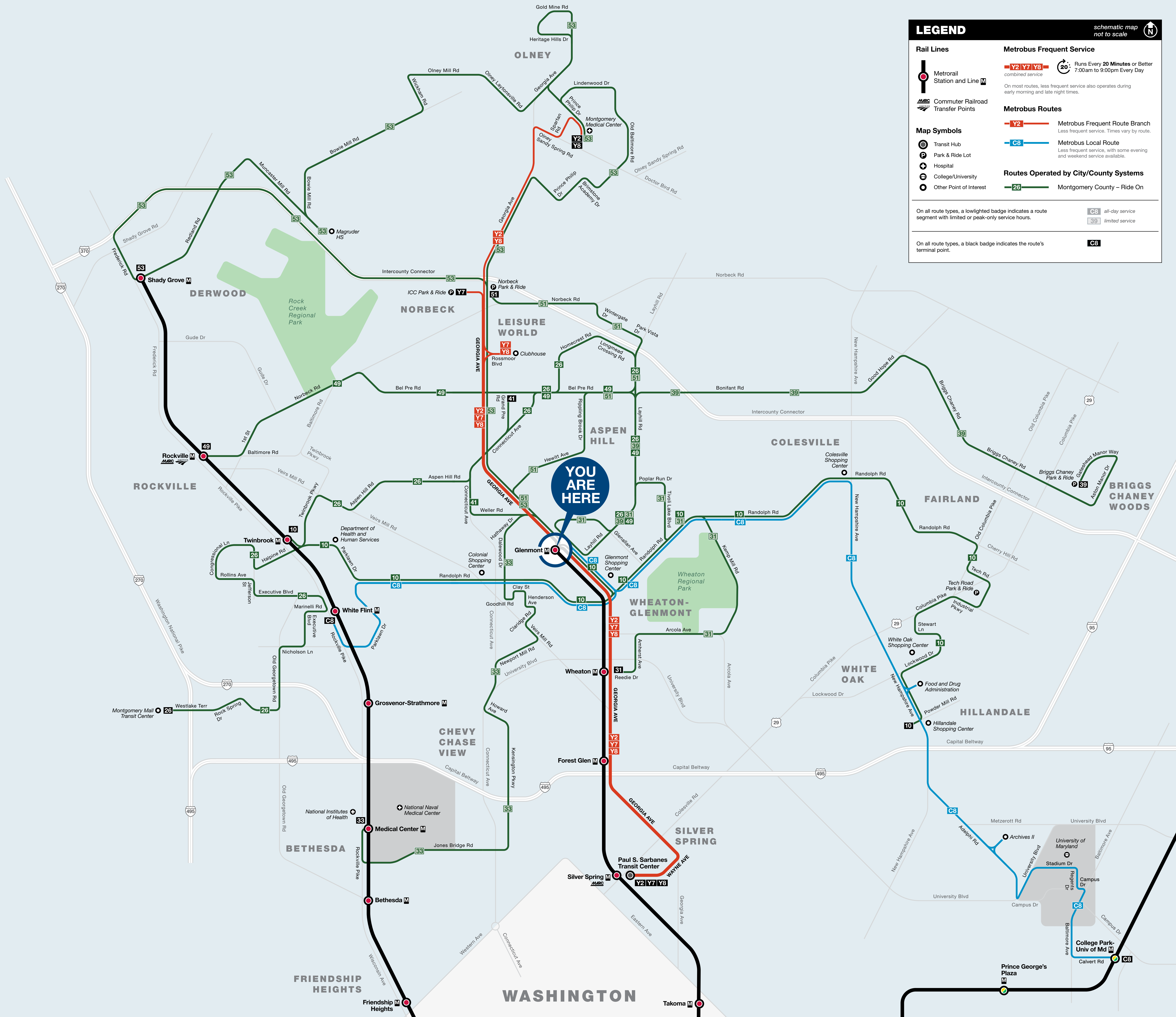




Bus Service from Glenmont



LEGEND

schematic map not to scale

Rail Lines

- MetroRail Station and Line
- Commuter Railroad Transfer Points

Map Symbols

- Transit Hub
- Park & Ride Lot
- Hospital
- College/University
- Other Point of Interest

Metrobus Frequent Service

- Runs Every 20 Minutes or Better combined service
- On most routes, less frequent service also operates during early morning and late night times.

Metrobus Routes

- Metrobus Frequent Route Branch
- Metrobus Local Route

Routes Operated by City/County Systems

- Montgomery County - Ride On
- all-day service
- limited service
- CB

On all route types, a lightwashed badge indicates a route segment with limited or peak-only service hours.

On all route types, a black badge indicates the route's terminal point.

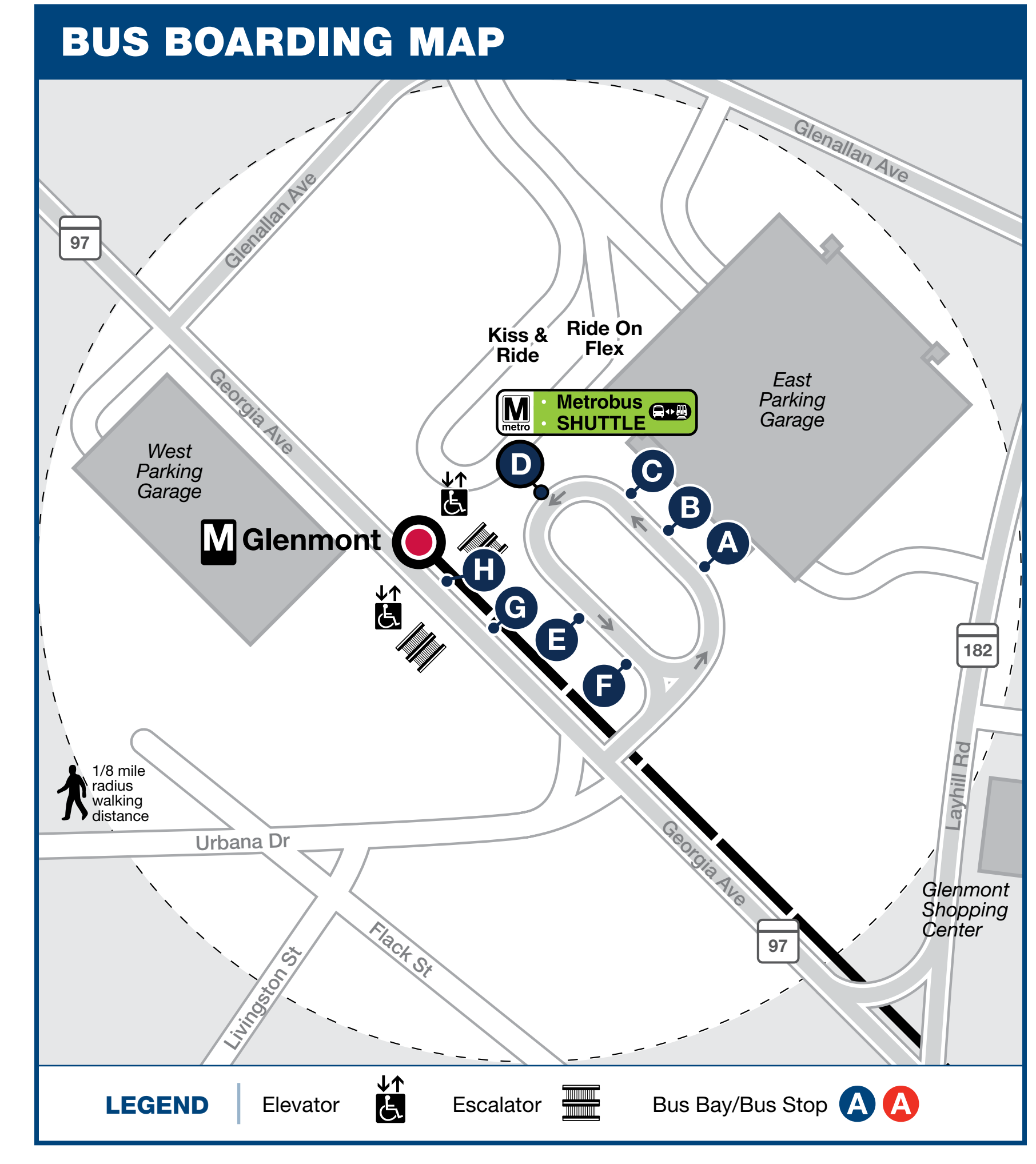
BUS SERVICE AND BOARDING LOCATIONS

Frequent service is available on selected lines. Look for the **Frequent Service** icon. Buses run frequently every day between 7:00am and 9:00pm. Less frequent service runs at early morning and late night times.

The table shows approximate minutes between buses; check schedules for full details.

ROUTE	DESTINATION	BOARD AT BUS BAY	MONDAY TO FRIDAY				SATURDAY		SUNDAY	
			AM RUSH	MIDDAY	PM RUSH	EVENING	DAY	EVENING	DAY	EVENING
GEORGIA AVE-MARYLAND LINE										
Y2 Y7 Y8	Georgia Ave & Connecticut Ave	H	10-15	15	10	15-30	20	20	20	20
Y2 Y7 Y8	Paul S. Sarbanes Transit Center (Silver Spring M)	D	10	15	10	15-30	20	20	20	20
Y2 Y8	Medstar Montgomery Medical Center	H	20-30	30	20	15-30	20	20	20	20
Y7	ICC Park & Ride via Leisure World	H	20-30	30	20	--	--	--	--	--
Y8	Medstar Montgomery Medical Center via Leisure World	H	20-30	30	20-60	--	40	--	40	--
COLLEGE PARK-WHITE FLINT LINE										
C8	College Park-U of Md M	E	30	30	30*	--	30	--	--	--
C8	White Flint M	F	30	30	30	30	30	30	--	--
RIDE ON-MONTGOMERY COUNTY										
10	Hillandale	F	30	25-30	20-25	30-45	30	40	40	40
10	Twinbrook M	F	25-30	20-30	25-30	45	30	40-45	40	40-45
26	Montgomery Mall Transit Center	B	20-25	30	20	30-45	35	35-45	35	35-45
31	Wheaton M	C	60	--	60	--	--	--	--	--
33	Medical Center M	A	30-35	--	30-40	--	--	--	--	--
39	Briggs Chaney Park & Ride	B	35-40	--	35-45	--	--	--	--	--
41	Aspen Hill	B	40	40	40	40	40	40	40	--
49	Rockville M	C	20	25-30	15-25	35-40	35-40	40	35-40	40
51	Norbeck Park & Ride	G	55-60	--	55	--	--	--	--	--
53	Shady Grove M	A	50**	--	50†	--	--	--	--	--
FLEX	Glenmont-Wheaton Zone	^	--	^	--	--	--	--	--	--
M	Metrobus SHUTTLE	D	During track work and/or rail shutdown events, this bus stop will also be served by Metro shuttle buses.							

* Does not serve FDA/IRC after 6:00 pm Monday to Friday.
 ** Does not serve ICC Park & Ride Lot during AM Rush periods.
 † Does not serve Bowie Mill Rd during PM Rush periods; travels via Intercountry Connector.
 ^ On-demand service with Ride On Flex app. Check website at rideonbus.com for service details.



Bus service is subject to change. Check wmata.com for updates.

December 2021

information wmata.com | PHONE 202-637-7000 | TTY 202-638-3780
 Para busETA y información general, llame al 202-637-7000 (TTY 202-638-3780) o visite wmata.com.
 정보나 busETA 또는 기타 지원 관련 문의는 202-637-7000 (TTY 202-638-3780) 으로 전화하십시오.
 스페인어 문의는 T를 누르십시오, 기타 언어 관련 문의는 888을 누른 후 5를 누르십시오, 또는 wmata.com 을 방문하십시오.

metroAlerts
 Sign up today at wmata.com/MetroAlerts

metroAlerts

Through MetroAlerts, you can be notified of Metro service disruptions via email or text messages. MetroAlerts can be sent to computers, cellular phones, pagers or personal digital assistants capable of receiving data. MetroAlerts are limited to 140 characters to prevent them from being truncated when received as text messages. If further information on the incident is available, it is published on the website and a link to that information is included in the MetroAlert.

KNOW MORE. KNOW FIRST.
 Sign up today at wmata.com/MetroAlerts

Metro is accessible.
 Metro es accesible.
 메트로는 접속 가능합니다.