

Paul S. Sarbanes Transit Center Directory Map

Level 3

Nivel 3

- Taxis
- Kiss & Ride

Level 2

Nivel 2

Bay Routes/Rutas

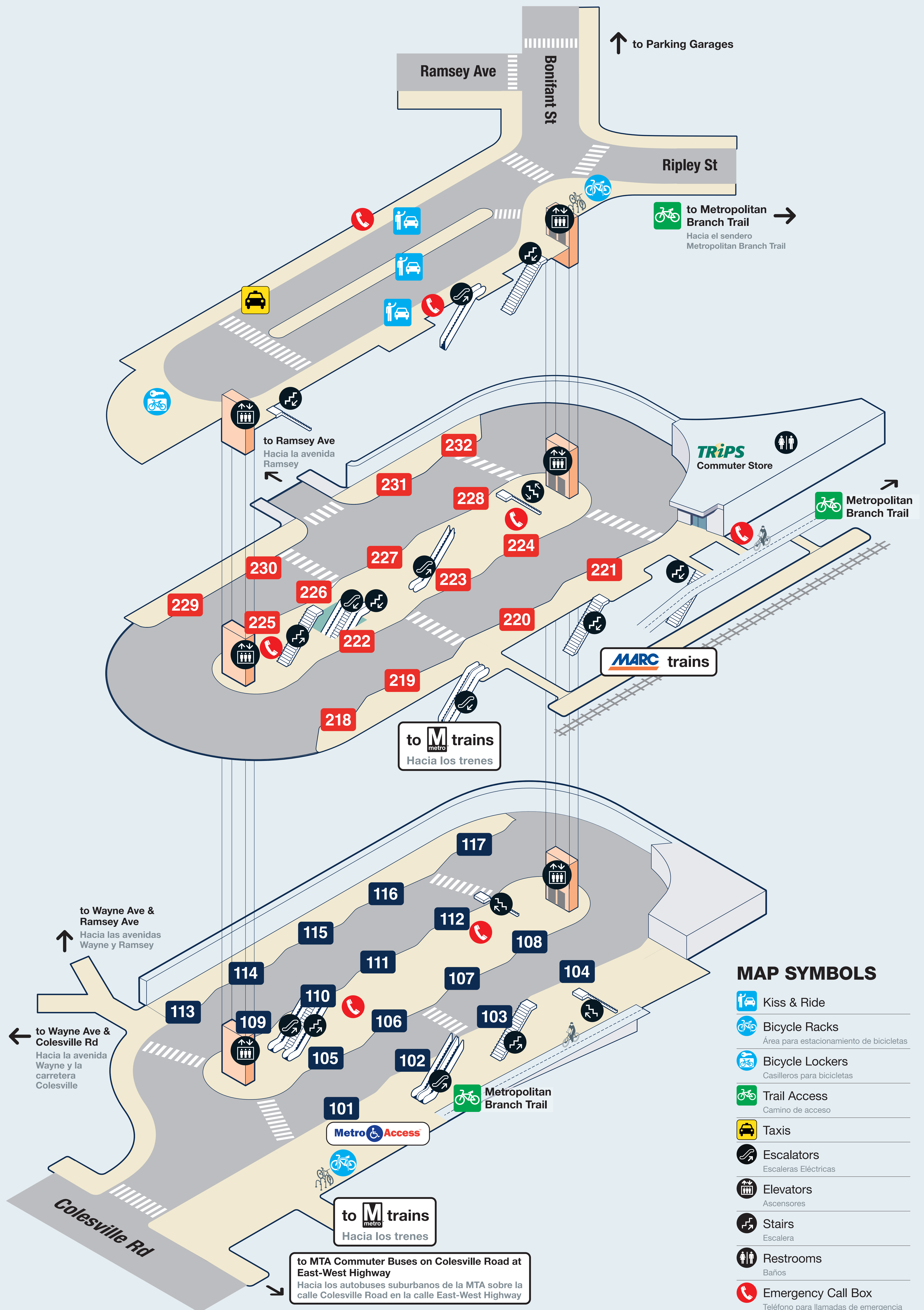
- 218** Q1, Q2, Q4
- 219** Y2, Y7, Y8
- 220** 70
- 221** 79
- 222** Ride On 15, 19
- 223** F4
- 224** Peter Pan Bus Lines
- 225** Ride On 18
- 226** Ride On 20
- 227** Ride On 14, 17
- 229** FLASH Blue Route
FLASH Orange Route
- 231** Shuttle-UM 111
- 232** Ride On 4, 5

Level 1

Nivel 1

Bay Routes/Rutas

- 101** MetroAccess
- 102** J1, J2
- 103** S2
- 104** S9
- 105** Ride On 28 VanGo
- 106** Ride On 1, 11
- 107** Ride On 2
- 108** Ride On 16
- 110** Ride On 8, 9
- 111** Ride On 21, 22,
FDA Shuttle
- 112** Ride On 12, 13
- 113** Z2, Z6
- 114** Z8
- 115** Z7



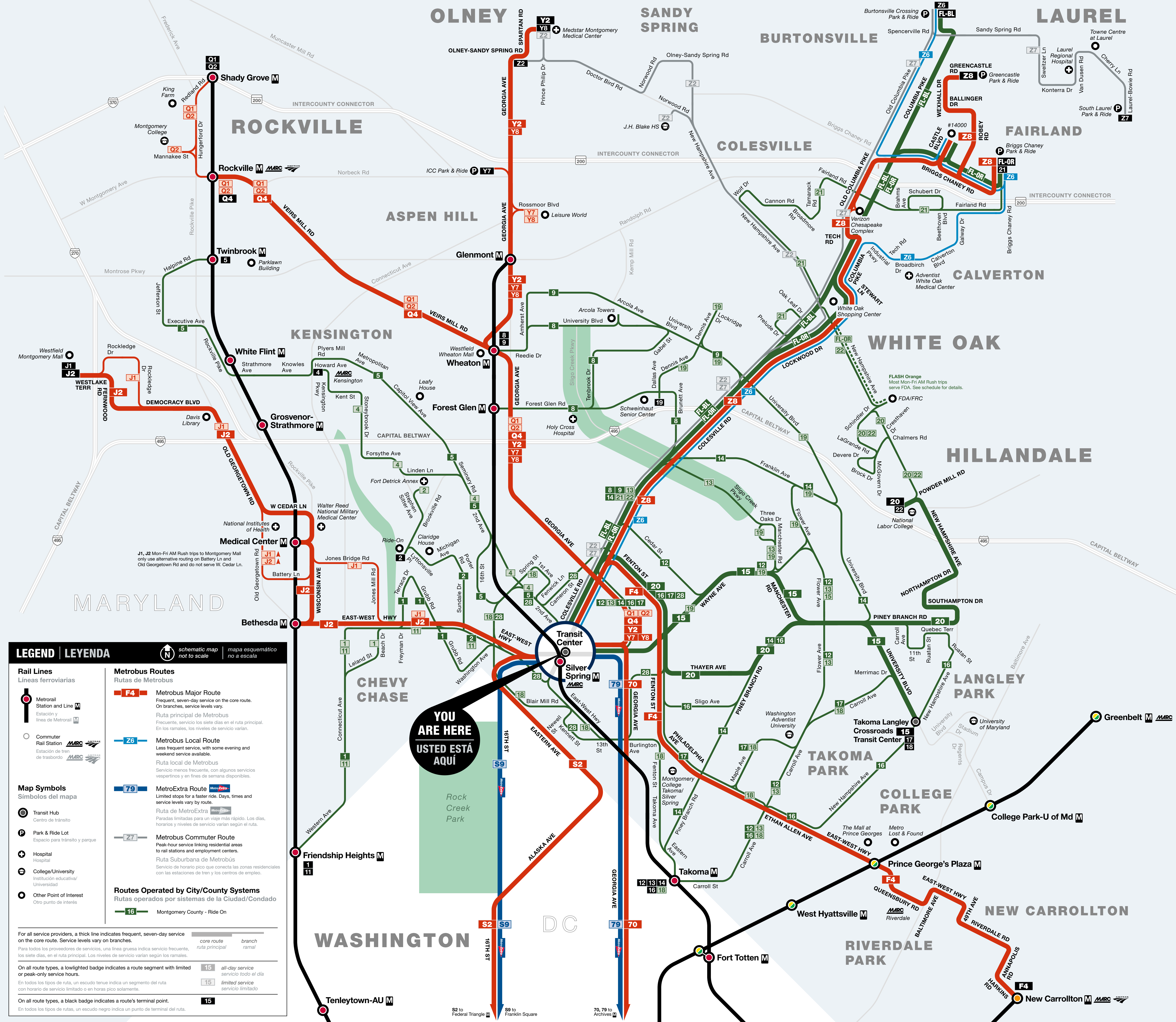
MAP SYMBOLS

- Kiss & Ride
- Bicycle Racks
Área para estacionamiento de bicicletas
- Bicycle Lockers
Casilleros para bicicletas
- Trail Access
Camino de acceso
- Taxi
- Escalators
Escaleras Eléctricas
- Elevators
Ascensores
- Stairs
Escalera
- Restrooms
Baños
- Emergency Call Box
Teléfono para llamadas de emergencia

March 2021 | Marzo 2021



Bus Service from Servicio de autobús del Silver Spring



BUS SERVICE AND BOARDING LOCATIONS | EL SERVICIO DE AUTOBÚS Y LAS PARADAS PARA ABORDAR

The table shows approximate minutes between buses; check schedules for full details. La tabla muestra minutos aproximados entre autobuses; consultar los horarios para obtener detalles completos.

| ROUTE | DESTINATION | BOARD AT BUS BAY | MONDAY TO FRIDAY DE LUNES A VIERNES | SATURDAY SABADO | SUNDAY DOMINGO |
|--|------------------------------------|------------------|---|-----------------|----------------|
| METROBUS | | | | | |
| GEORGIA AVE - 7TH ST LINE | | | | | |
| 70 | Archives | 220 | 12 12 12 12 12 15 15 | 15 15 | 15 15 |
| GEORGIA AVE LINE | | | | | |
| 79 | Archives | 221 | 10 12 10 -- 15 -- 15 -- | -- | -- |
| NEW CARROLLTON-SILVER SPRING LINE | | | | | |
| F4 | New Carrollton | 223 | 13-15 20 12-15 20-30 22-30 22-30 30-35 35 | | |
| BETHESDA-SILVER SPRING LINE | | | | | |
| J1 | Montgomery Mall | 102 | 20 -- -- -- -- -- -- -- | | |
| J2 | Montgomery Mall | 102 | 10 20 12-15 15-20 25 25-30 25 25-30 | | |
| VEIRS MILL RD LINE | | | | | |
| Q1 | Shady Grove | 218 | 3 trips -- -- -- 30* 30* 30* 20* | | |
| Q2 | Shady Grove via Montgomery College | 218 | 30 -- -- -- 20-30 -- -- -- | | |
| Q4 | Rockville | 218 | 4 trips 30 30 2 trips 30 -- 30 3 trips | | |
| 16TH ST LINE | | | | | |
| S2 | Federal Triangle | 103 | 10 15 15 15 15 15 20 20 | | |
| 16TH ST LINE | | | | | |
| S9 | Franklin Square | 104 | 6 8-15 8-12 15 15 15 20 -- | | |

| ROUTE | DESTINATION | BOARD AT BUS BAY | MONDAY TO FRIDAY DE LUNES A VIERNES | SATURDAY SABADO | SUNDAY DOMINGO |
|---|-----------------------------------|------------------|--|-----------------|--------------------------|
| GEORGIA AVE-MARYLAND LINE | | | | | |
| Y2 Y8 | Medstar Montgomery Medical Center | 219 | 20-30 20-30 20 15-30 22-24 22-24 22-24 22-24 | | |
| Y7 | ICC Park & Ride | 219 | 20-30 20-30 20-30 -- -- -- -- -- | | |
| COLESVILLE-ASHTON LINE | | | | | |
| Z2 | Olney | 113 | 60 -- 60 -- -- -- -- -- | | |
| COLESVILLE-WESTFARM LINE | | | | | |
| Z6 | Burtonsville Crossing Park & Ride | 113 | 30 30 30 30 30 30 30 -- -- | | |
| LAUREL-BURTONSVILLE EXPRESS LINE | | | | | |
| Z7 | South Laurel Park & Ride | 115 | 2 trips -- 40-45 -- -- -- -- -- | | |
| FAIRLAND LINE | | | | | |
| Z8 | Greencastle Park & Ride | 114 | 30 30 25-35 20-30 30* 30* 20* 20-30* | | |
| SHUTTLE-UM | | | | | |
| 111 | University of Maryland | 231 | | | *University ID required. |

| ROUTE | DESTINATION | BOARD AT BUS BAY | MONDAY TO FRIDAY DE LUNES A VIERNES | SATURDAY SABADO | SUNDAY DOMINGO |
|----------------------------------|-------------------------------------|------------------|---|-----------------|----------------|
| RIDE ON-MONTGOMERY COUNTY | | | | | |
| 1 | Friendship Heights | 108 | 20 35 35 35 35 35 55 55 | | |
| 2 | Brookville (Ride On Operations Ctr) | 107 | 45* 45 45 45 45 45 45 45 | | |
| 4 | Kensington | 232 | 60 -- 60 -- -- -- -- -- | | |
| 5 | Twinbrook | 232 | 20 40 20 40 40 40 40 40 | | |
| 8 | Wheaton via Forest Glen | 110 | 35-40 50 35-40 -- 50 -- 50 -- | | |
| 9 | Wheaton | 110 | 20 40 20 40 40 40 40 40 | | |
| 11 | Friendship Heights | 108 | 20-30 -- -- -- -- -- -- -- | | |
| 12 | Takoma via Wayne Ave | 112 | 35 35 30 35 35 35 55 55 | | |
| 13 | Takoma via Sligo Creek Pkwy | 112 | 35 -- 30 -- -- -- -- -- | | |
| 14 | Takoma via Piney Branch Rd | 227 | 70 70 70 70 70 70 -- -- | | |
| 15 | Langley Park via Wayne Ave | 222 | 12-15 15-20 10-12 25-40 15-20 25-40 25 40 | | |
| 16 | Takoma via New Hampshire Ave | 108 | 15 15-30 12 30-40 20-25 30-40 25-30 35-40 | | |
| 17 | Langley Park via Philadelphia Ave | 227 | 35 35 35 35 35 35 60 60 | | |
| 18 | Langley Park via Carroll Ave | 225 | 45 45 45 -- 45** -- -- -- | | |
| 19 | Northwood | 222 | -- -- 60 -- -- -- -- -- | | |
| 20 | Hillandale via Piney Branch Rd | 228 | 20 30 12-15 45 25-30 45 30-35 45 | | |
| 21 | Briggs Chaney Park & Ride | 111 | -- -- 45 -- -- -- -- -- | | |
| 22 | Hillandale via Columbia Pike | 111 | 45 -- 45-50 -- -- -- -- -- | | |
| 28 | VanGo Silver Spring Shuttle | 105 | 30 30 30 30 30 30 -- -- | | |
| FL-BL | FASTN Blue Route | 229 | 15 -- 15 -- -- -- -- -- | | |
| FL-OR | FASTN Orange Route | 229 | 15* 15 15 15 15 15 15 15 | | |

information busETA and General Inquiries
información busETA y consultas generales

PHONE 202-637-7000 | TTY 202-638-3780
Para busETA y información general, llame al 202-637-7000 (TTY 202-638-3780) o visite wmata.com.
정보나 busETA 또는 언어 지원 관련 문의는 202-637-7000 (TTY 202-638-3780) 으로 전화하십시오.
스페인어 문의는 1을 누르고, 기타 언어 관련 문의는 88을 누른 후 5를 누르십시오. 또는 wmata.com 을 방문하십시오.



metroAlerts
Sign up today at wmata.com/MetroAlerts
Regístrate hoy mismo en wmata.com/MetroAlerts

Metro is accessible. Metro es accesible.
메트로는 접속 가능합니다.

