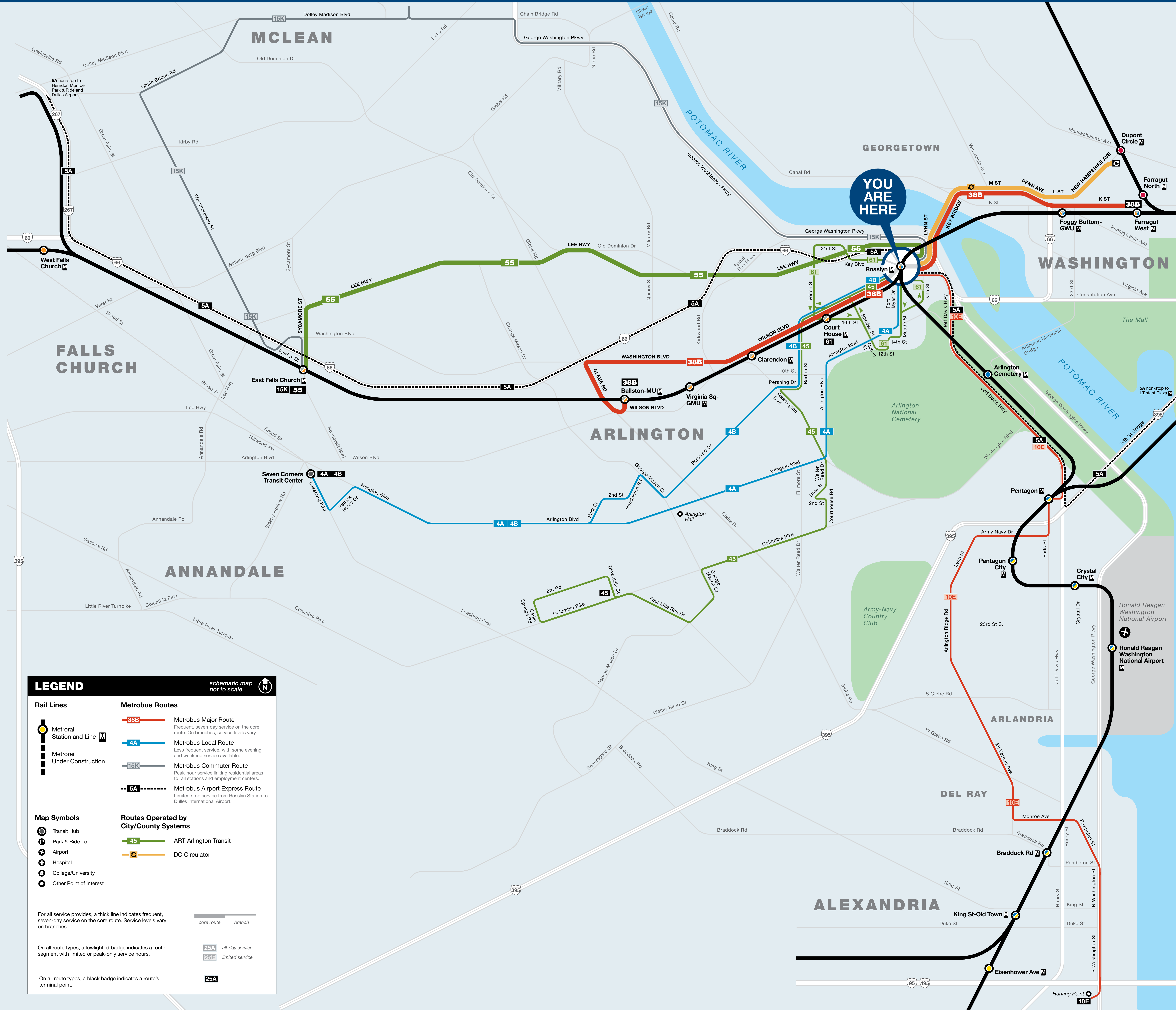




Bus Service from Rosslyn



LEGEND schematic map not to scale

Rail Lines

- MetroRail Station and Line (M)
- MetroRail Under Construction

Map Symbols

- Transit Hub
- Park & Ride Lot
- Airport
- Hospital
- College/University
- Other Point of Interest

Metrobus Routes

- 38B** Metrobus Major Route: Frequent, seven-day service on the core route. On branches, service levels vary.
- 4A** Metrobus Local Route: Less frequent service, with some evening and weekend service available.
- 15K** Metrobus Commuter Route: Peak-hour service linking residential areas to rail stations and employment centers.
- 5A** Metrobus Airport Express Route: Limited stop service from Rosslyn-Station to Dulles International Airport.

Routes Operated by City/County Systems

- 45** ART Arlington Transit
- C** DC Circulator

For all service providers, a thick line indicates frequent, seven-day service on the core route. Service levels vary on branches.

On all route types, a lowlighted badge indicates a route segment with limited or peak-only service hours.

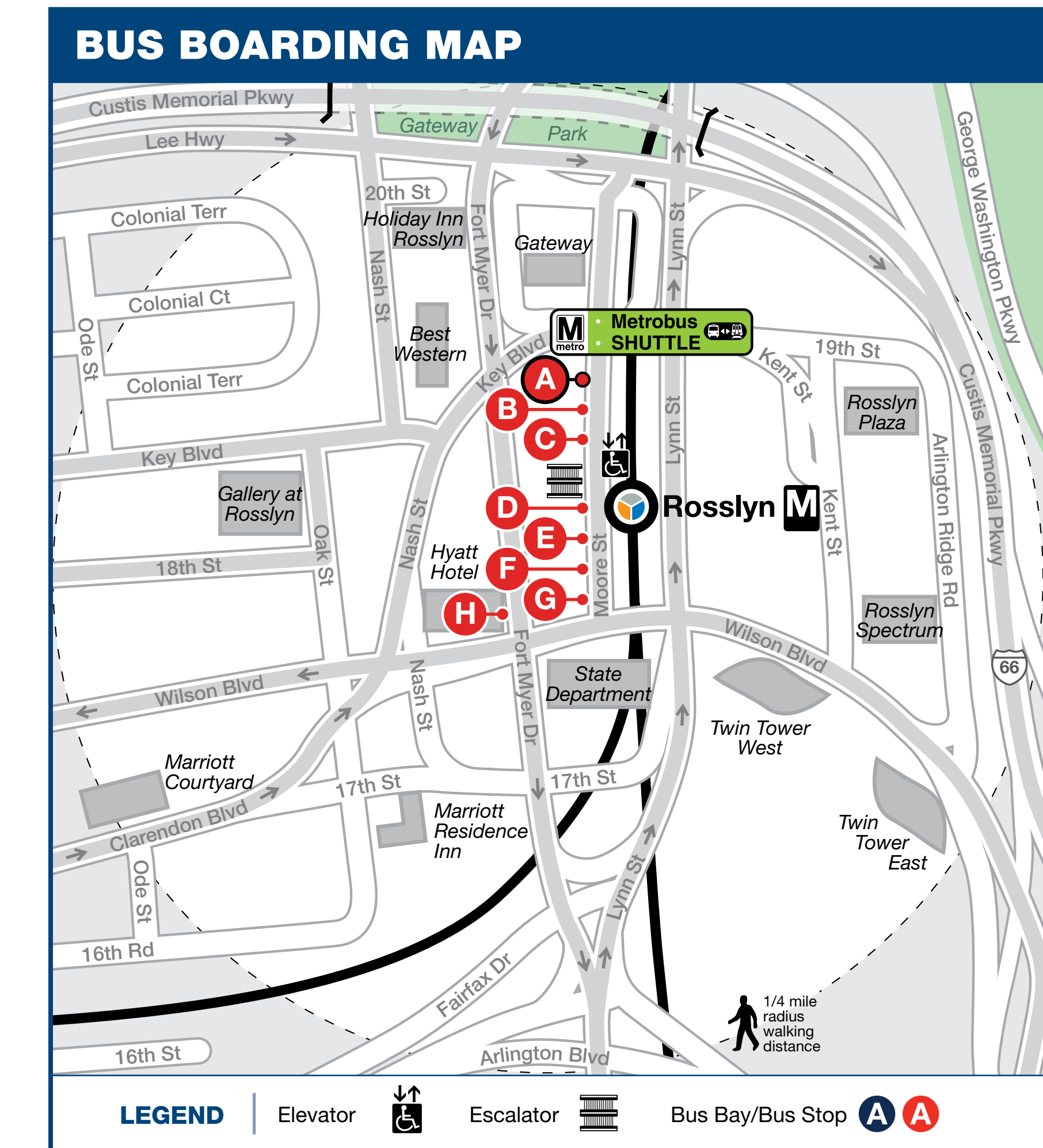
On all route types, a black badge indicates a route's terminal point.

BUS SERVICE AND BOARDING LOCATIONS

The table shows approximate minutes between buses; check schedules for full details

ROUTE	DESTINATION	BOARD AT BUS STOP	MONDAY TO FRIDAY				SATURDAY		SUNDAY	
			AM RUSH	MIDDAY	PM RUSH	EVENING	DAY	EVENING	DAY	EVENING
PERSHING DR-ARLINGTON BLVD LINE										
4A	Seven Corners via Arlington Blvd	D	30	60	15-30	40-60	--	--	--	--
4B	Seven Corners via Court House	D	30	60	30	40-60	45	45	65-70	70-75
DC-DULLES LINE										
5A	Dulles Airport	C	30-35	40	30	35-40	60	60	60	60
5A	L'Enfant Plaza	C	30-35	40	30	35-40	60	60	60	60
JEFFERSON DAVIS HWY LINE										
10E	Hunting Point	H	--	--	30	--	--	--	--	--
CHAIN BRIDGE ROAD LINE										
15K	East Falls Church	B	30	--	30	--	--	--	--	--
BALLSTON-FARRAGUT SQUARE LINE										
38B	Ballston-MU	E	15	20	15	30	30	30	30	30
38B	Farragut N&W	E	12	20	15	30	30	30	30	30
ART-ARLINGTON TRANSIT										
45	Columbia Heights West	G	25-30	30	25-30	30	30	30	30	--
55	East Falls Church	F	12	15	12-15	15-30	20	20-30	30	30
61	Court House M - Counter-Clockwise	G	25	--	25	--	--	--	--	--
61	Court House M - Clockwise	G	25	--	25	--	--	--	--	--
DC CIRCULATOR										
C	Dupont Circle	A	10	10	10	10	10	10	10	10
M	Metrobus SHUTTLE	A	During track work and/or rail shutdown events, this bus stop will also be served by Metro shuttle buses.							

NOTE: The lettered red discs in the table and on the boarding map identify bus stops near this station. The letters ARE NOT displayed at the actual bus stops. * Route 96 Late Night trips end at Reeves Center (Saturday and Sunday) or Duke Ellington Bridge (Saturday only). See full schedule for details.



metroAlerts

Through MetroAlerts, you can be notified of Metro service disruptions via email or text messages. MetroAlerts can be sent to computers, cellular phones, pagers or personal digital assistants capable of receiving data. MetroAlerts are limited to 140 characters to prevent them from being truncated when received as text messages. If further information on the incident is available, it is published on the website and a link to that information is included in the MetroAlert.

KNOW MORE. KNOW FIRST.

Sign up today at wmata.com/MetroAlerts

information wmata.com | PHONE 202-637-7000 | TTY 202-638-3780

busETA and General Inquiries Para busETA y información general, llame al 202-637-7000 (TTY 202-638-3780) o visite wmata.com.

metroAlerts

Sign up today at wmata.com/MetroAlerts

Metro is accessible. Metro es accesible. 메트로는 접속 가능합니다.

