



Bus Service from Rhode Island Ave

LEGEND *schematic map not to scale*

Rail Lines

- Metrorail Station and Line
- Commuter Railroad
- Transfer Points

Map Symbols

- Hospital
- College/University
- Other Point of Interest

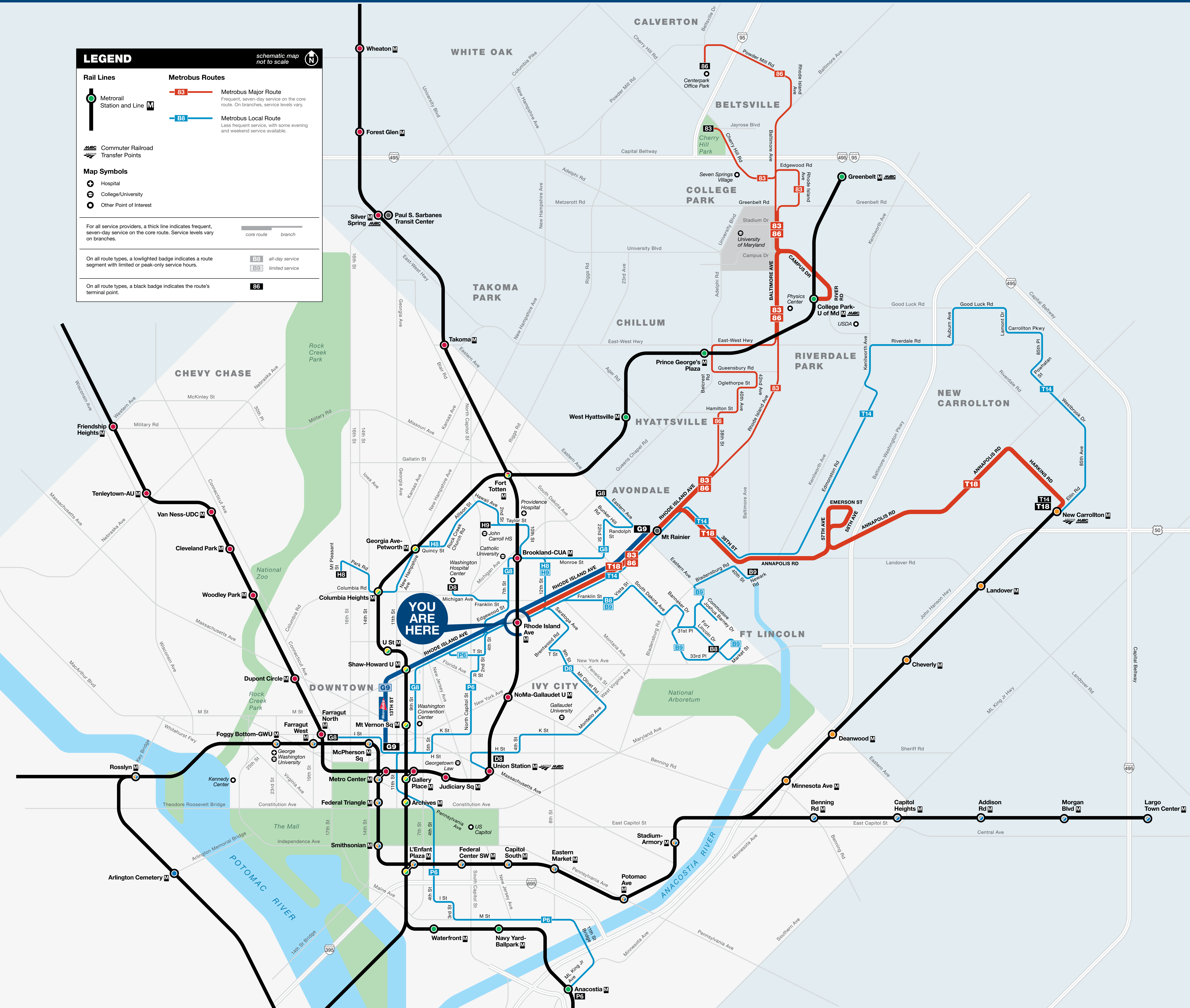
Metrobus Routes

- B3** Metrobus Major Route: Frequent, seven-day service on the core route. On branches, service levels vary.
- B8** Metrobus Local Route: Less frequent service, with some evening and weekend service available.

For all service providers, a thick line indicates frequent, seven-day service on the core route. Service levels vary on branches.

On all route types, a lightwashed badge indicates a route segment with limited or peak-only service hours.

On all route types, a black badge indicates the route's terminal point.



BUS SERVICE AND BOARDING LOCATIONS

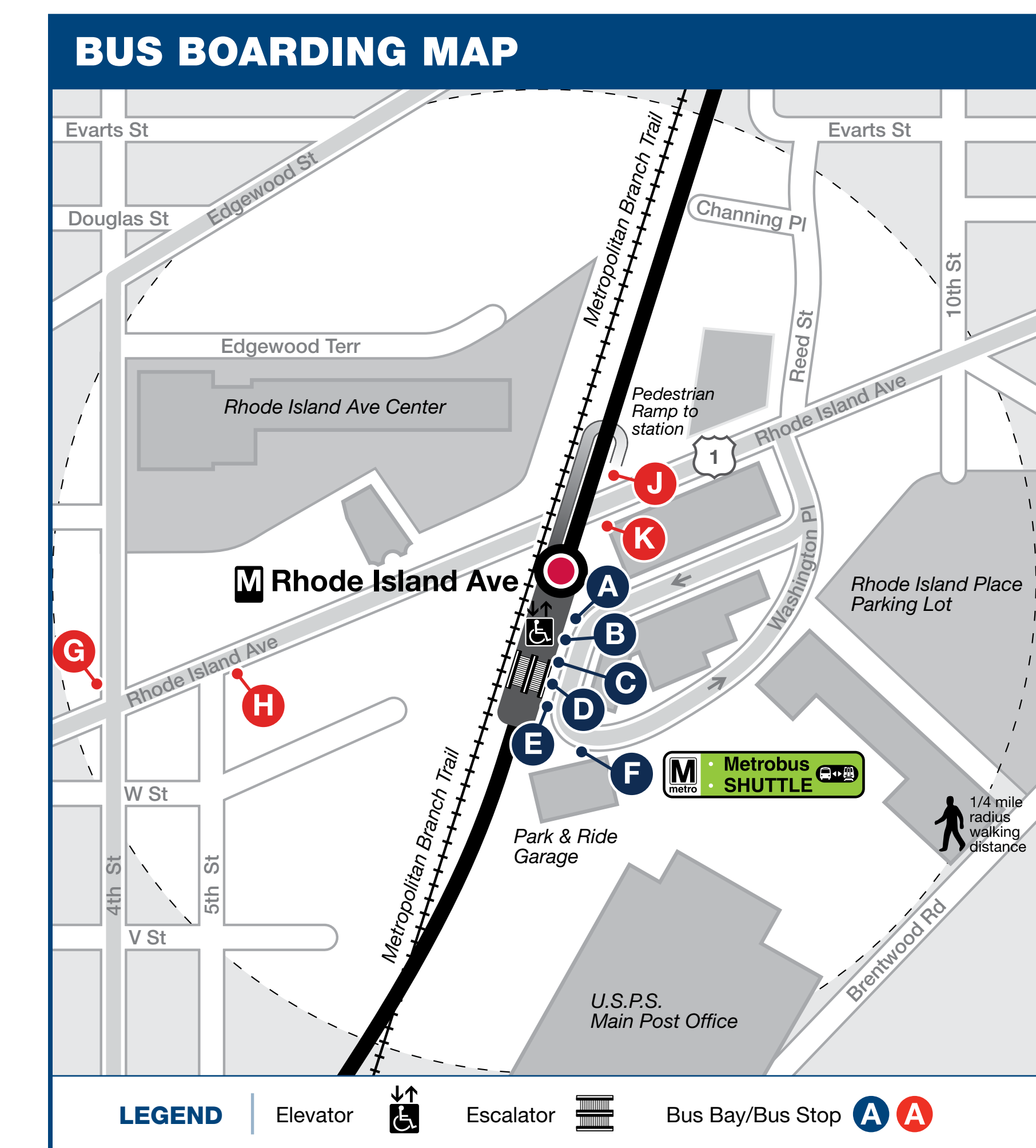
The table shows approximate time between buses in minutes; check schedules for full details

ROUTE	DESTINATION	BOARD AT BUS BAY	MONDAY TO FRIDAY				SATURDAY		SUNDAY	
			AM RUSH	MIDDAY	PM RUSH	EVENING	DAY	EVENING	DAY	EVENING
COLLEGE PARK LINE										
B3	Mt Rainier	E	--	--	--	30	4 trips	30-60	2 trips	30
B3	Cherry Hill Park	E	25-30	45	20	30-50	60-65	60	60	--
B6	Calverton	E	25-30	60	30	35-50	60	--	60	--
FORT LINCOLN SHUTTLE LINE										
B8	Fort Lincoln	F	15	--	23	--	--	--	--	--
B9	Colmar Manor	F	--	70	--	--	--	--	--	--
HOSPITAL CENTER LINE										
D8	Union Station	C	15-20	20	15	20-30	22	30	32	30
D8	Washington Hospital Center	C	15-20	20	15	20-30	22	30	32	30
RHODE ISLAND AVE LINE Friday and Saturday late night trips to Farragut North/West operate from bay F										
G8	Farragut North/West	G	6-15	30	12-15	25-35	30	30	30	30
G8	Avondale	H	10-15	15-30	12	25-35	30	30	30	30
RHODE ISLAND AVE METROEXTRA										
G9	McPherson Sq	J	15	--	15	--	--	--	--	--
G9	Eastern Ave	K	15-20	--	15	--	--	--	--	--
PARK RD-BROOKLAND LINE										
H8	Mount Pleasant	A	12-20	24	13-20	30-35	22-24	22-35	25	35
H9	Archbishop John Carroll HS	A	2 trips	--	--	--	--	--	--	--
ANACOSTIA-ECKINGTON LINE										
P6	Anacostia	B	15	24	15-20	30	35	30	35	35
P6	Eckington	B	4 trips	--	--	--	--	--	--	--
RHODE ISLAND AVE-CARVER TERRACE LINE										
S41*	Carver Terrace	C	1 trip	--	--	--	--	--	--	--
RHODE ISLAND AVE-NEW CARROLLTON LINE										
T14	New Carrollton	D	20-30	60	25	45-60	60	--	60	--
ANNAPOLIS ROAD LINE										
T18	New Carrollton	D	15-20	25-30	19	30-45	25	25	35	--

M Metrobus Shuttle **C** Commuter Railroad **F** During track work and/or rail shutdown events, this bus stop will also be served by Metro shuttle buses.

NOTE: The lettered red discs in the table and on the boarding map identify bus stops near this station. The letters **ARE NOT** displayed at the actual bus stops.

- B3** to Mt Rainier operates during these periods only: after 10 pm (Mon-Fri), before 7:30 am and after 8:15 pm (Sat) and before 7:30 am and after 6:45 pm (Sun)
- S41** is not shown on the map



metroAlerts

Through MetroAlerts, you can be notified of Metro service disruptions via email or text messages. MetroAlerts can be sent to computers, cellular phones, pagers or personal digital assistants capable of receiving data. MetroAlerts are limited to 140 characters to prevent them from being truncated when received as text messages. If further information on the incident is available, it is published on the website and a link to that information is included in the MetroAlert.

KNOW MORE. KNOW FIRST.
Sign up today at wmata.com/MetroAlerts

information wmata.com | 202-637-7000 | 202-638-3780
busETA and General Inquiries

Para busETA y información general, llame al 202-637-7000 (TTY 202-638-3780) o visite wmata.com.

정보나 busETA 또는 언어 지원 관련 문의는 202-637-7000 (TTY 202-638-3780) 으로 전화하십시오. 스피어인의 문의는 T를 누르십시오, 기타 언어 관련 문의는 888을 누른 후 5를 누르십시오. 또는 wmata.com 을 방문하십시오.

metroAlerts
Sign up today at wmata.com/MetroAlerts

Metro is accessible.
Metro es accesible.
메트로는 접속 가능합니다.

