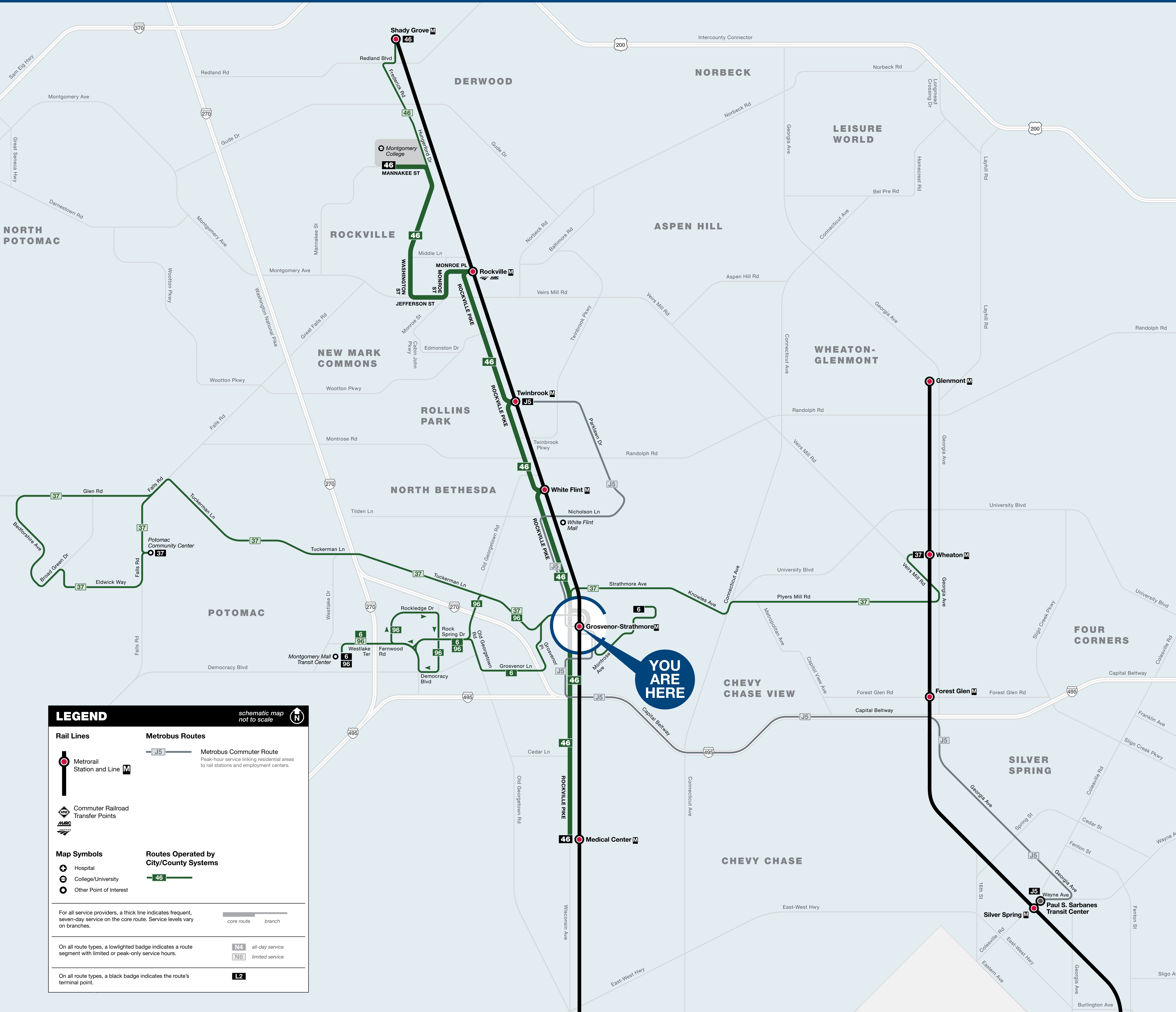




Bus Service from Grosvenor-Strathmore



BUS SERVICE AND BOARDING LOCATIONS

The table shows approximate minutes between buses; check schedules for full details

ROUTE	DESTINATION	BOARD AT BUS BAY	MONDAY TO FRIDAY				SATURDAY		SUNDAY	
			AM RUSH	MIDDAY	PM RUSH	EVENING	DAY	EVENING	DAY	EVENING
METROBUS										
J5	Twinbrook M	L	30	--	25-30*	--	--	--	--	--
J5	Paul S. Sarbanes Transit Center (Silver Spring M)	F	30	--	30	--	--	--	--	--
RIDE ON-MONTGOMERY COUNTY										
6	Parkside	G	30	30	30	30	--	--	--	--
6	Montgomery Mall Transit Center	G	30	30	30	30	--	--	--	--
37	Wheaton M	G	--	--	30-35	--	--	--	--	--
37	Potomac Community Center	G	30	--	30	--	--	--	--	--
46	Montgomery College, Shady Grove M	L	15	15	15	20-35*	20-25	25-30*	20-30*	30*
46	Medical Center M	E	15	15	15	25-35	20-25	25-30	20-30	30
96	Montgomery Mall Transit Center	H	10-15	30#	10	30	--	--	--	--
	Rock Spring Park Express	J	10	--	10	--	--	--	--	--
M	Metrobus SHUTTLE	F	During track work and/or rail shutdown events, this bus stop will also be served by Metro shuttle buses.							

* Route 46 extends to Shady Grove M after midnight Monday through Saturday and all day on Sunday. See full schedule for details.
 # Last PM Rush trip on J5 ends at White Flint.
 # Midday trips extend to Montgomery Mall Transit Center, and do not serve Rock Spring Park.



metroAlerts

Through MetroAlerts, you can be notified of Metro service disruptions via email or text messages. MetroAlerts can be sent to computers, cellular phones, pagers or personal digital assistants capable of receiving data. MetroAlerts are limited to 140 characters to prevent them from being truncated when received as text messages. If further information on the incident is available, it is published on the website and a link to that information is included in the MetroAlert.

KNOW MORE. KNOW FIRST.
 Sign up today at wmata.com/MetroAlerts

information wmata.com | 202-637-7000 | 202-638-3780
 busETA and General Inquiries

Para busETA y información general, llame al 202-637-7000 (TTY 202-638-3780) o visite wmata.com.
 정보나 busETA 또는 기타 지원 관련 문의는 202-637-7000 (TTY 202-638-3780) 으로 전화하십시오.
 스페인어 문의는 T를 누르시고, 기타 언어 관련 문의는 88을 누른 후 5를 누르십시오. 또는 wmata.com 을 방문하십시오.

metroAlerts

Sign up today at wmata.com/MetroAlerts

Metro is accessible.
 Metro es accesible.
 메트로는 접속 가능합니다.

