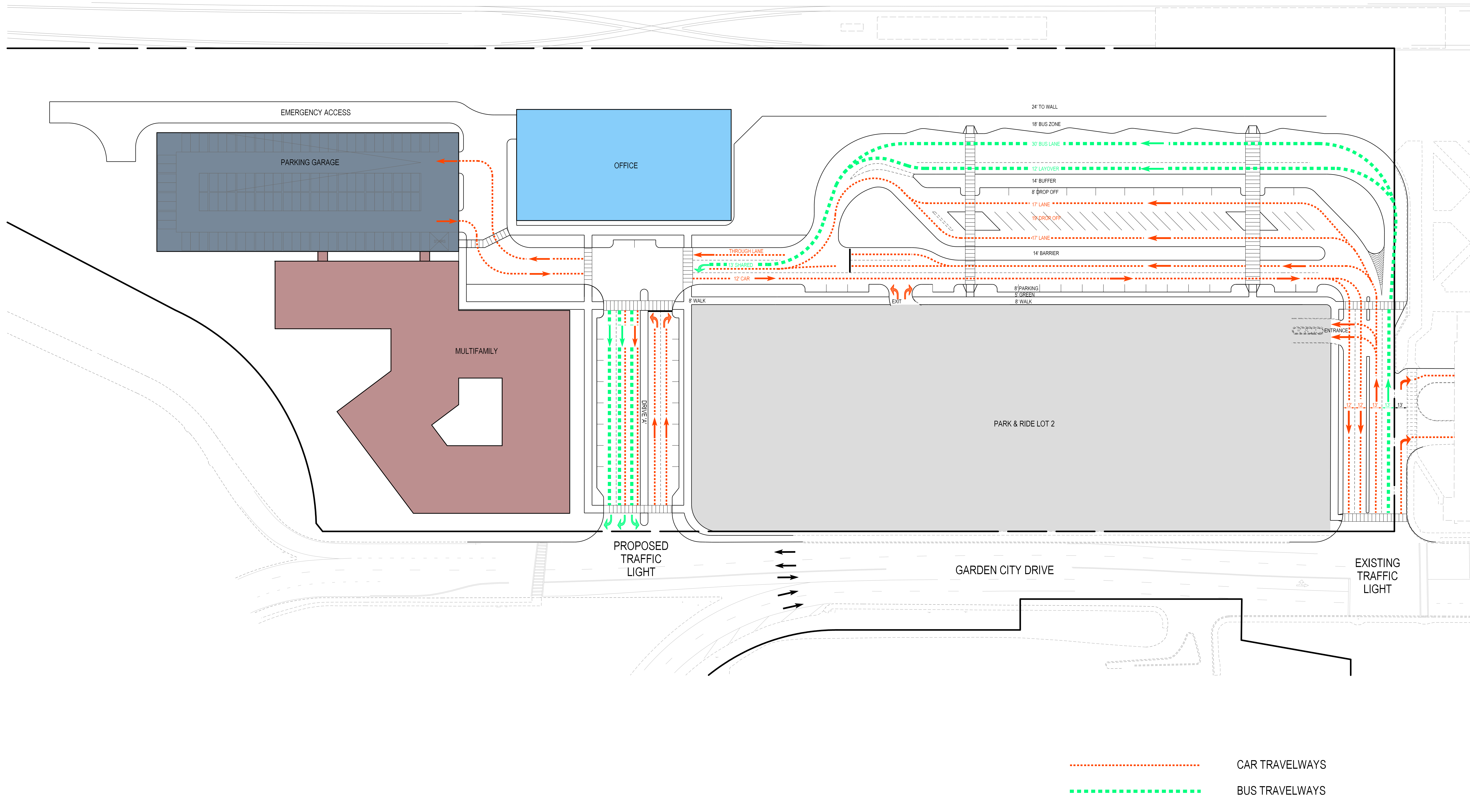


Circulation Diagrams

The original of this drawing document was prepared by Soltesz, LLC (SOLTESZ). If this document was not obtained directly from SOLTESZ, and/or it was transmitted electronically, SOLTESZ cannot guarantee that unauthorized changes and/or alterations were not made by others. If verification of the information contained herein is needed, contact should be made directly with SOLTESZ. SOLTESZ makes no warranties, express or implied, concerning the accuracy of any information that has been transmitted by electronic means.



..... CAR TRAVELWAYS
 BUS TRAVELWAYS

SOLTESZ, LLC
 Engineering
 Surveying
 Planning
 Environmental Sciences
 4300 Forbes Boulevard, Suite 230
 Lanham, MD 20706
 P. 301.794.7555 F. 301.794.7656
 www.solteszco.com

NO.	DATE	REVISIONS	BY	DATE

DATE: JUNE 2016
 DESIGNED: YOR
 CAD STANDARDS VERSION: V8 - 2009
 TECHNICIAN: YOR
 CHECKED: DJB

MISS UTILITY NOTE
 INFORMATION CONCERNING EXISTING UNDERGROUND UTILITIES WAS OBTAINED FROM AVAILABLE RECORDS. THE CONTRACTOR MUST DETERMINE THE EXACT LOCATION AND ELEVATION OF ALL EXISTING UTILITIES AND UTILITIES ORIGINATING BY DRIVING TEST PITS BY HAND, WELL IN ADVANCE OF THE START OF EXCAVATION. CONTACT "MISS UTILITY" AT 781-922-7777, 48 HOURS PRIOR TO THE START OF EXCAVATION. IF CLEARANCES ARE LESS THAN SHOWN ON THIS PLAN OR TWELVE (12) INCHES, WHICHEVER IS LESS, CONTACT THE ENGINEER AND THE UTILITY COMPANY BEFORE PROCEEDING WITH CONSTRUCTION. CLEARANCES LESS THAN NOTED MAY REQUIRE REVISIONS TO THIS PLAN.

OWNER/DEVELOPER/APPLICANT
 WASHINGTON METRO AREA TRANSIT AUTHORITY
 6TH AND D ST NW
 WASHINGTON, DC 20004
 MASS TRANSIT AUTHORITY
 6 ST. PAUL STREET, SUITE 1204
 BALTIMORE, MD 21202

NEW CARROLLTON DEVELOPER LLC
 7735 OLD GEORGETOWN ROAD
 SUITE 600
 BETHESDA, MD 20814

MAP: 13	GRID: DS, ES
TAX MAP: 52, A1	ZONING CATEGORY: M-XT
WSDC 20P SHEET: 208NE07	XXXX
SITE DATUM: HORIZONTAL: XXXXXX	XXXX
VERTICAL: XXXXXX	XXXX

VEHICULAR CIRCULATION EXHIBIT

**FINAL INTERIM LAYOUT
 NEW CARROLLTON**

LANHAM (20th) ELECTION DISTRICT, PRINCE GEORGE'S COUNTY, MARYLAND

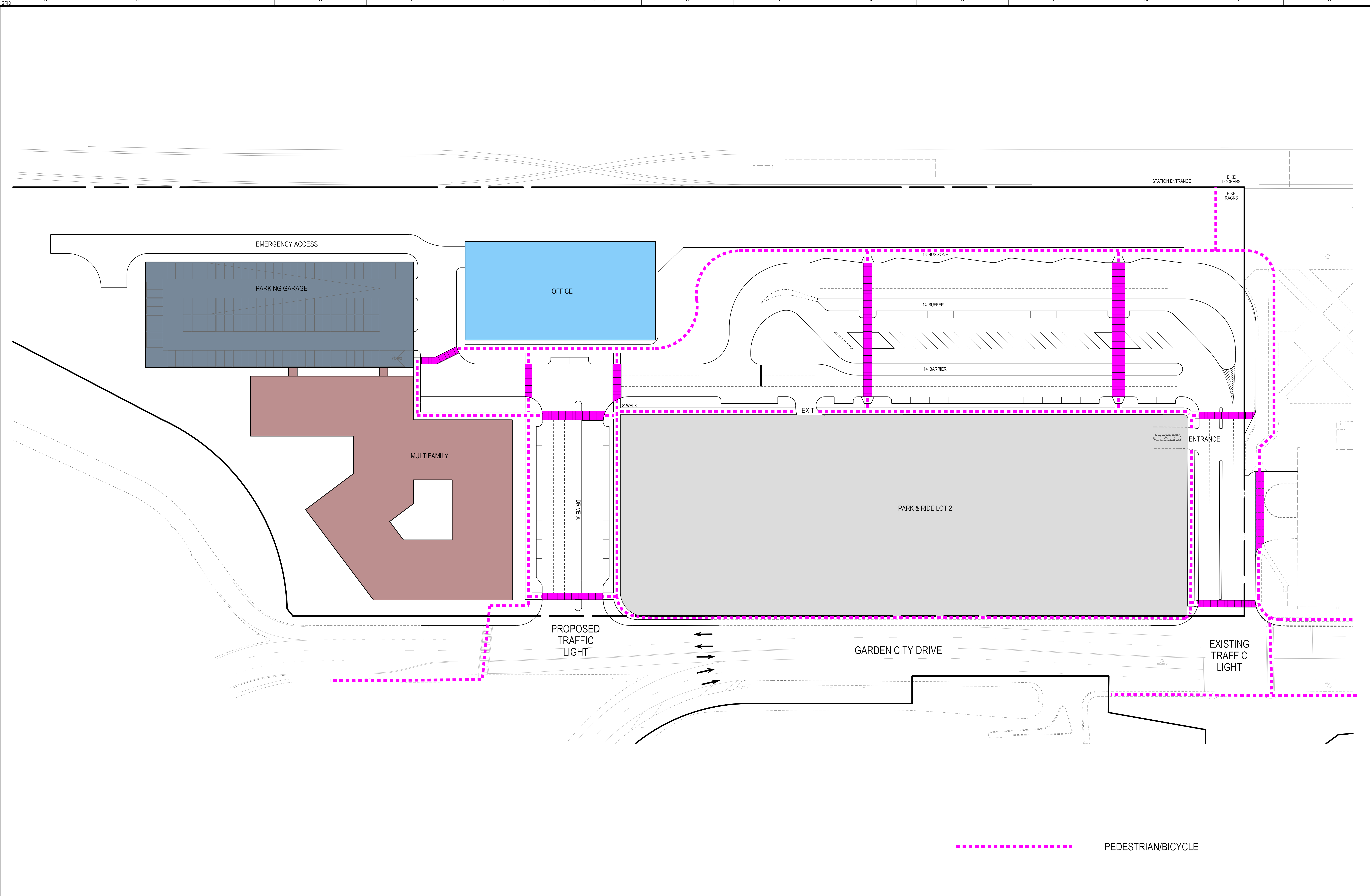
PROJECT NO.
1558-00-00

SHEET
1
OF
1

1" = 40'

P119580000\EXHIBIT\Circulation_EXH.SHT Scale= 40,0000 ft / in. User= DBiskel PLTdrv=PDF_Color_150.pltctg PenB= TEXT_SUB.tbl 10/13/2016 11:41:40 AM

The original of this drawing document was prepared by Soltesz, LLC (SOLTESZ). If this document was not obtained directly from SOLTESZ, and/or it was transmitted electronically, SOLTESZ cannot guarantee that unauthorized changes and/or alterations were not made by others. If verification of the information contained herein is needed, contact should be made directly with SOLTESZ. SOLTESZ makes no warranties, express or implied, concerning the accuracy of any information that has been transmitted by electronic means.



SOLTESZ, LLC
 Engineering
 Surveying
 Planning
 Environmental Sciences
 4300 Forbes Boulevard, Suite 230
 Lanham, MD 20706
 P. 301.794.7555 F. 301.794.7656
 www.solteszco.com


NO.	DATE	REVISIONS	BY	DATE

NO. _____ DATE _____ REVISIONS _____ BY _____ DATE _____
 DESIGNED: YOR CAD STANDARDS VERSION: V8 - 2009 TECHNICIAN: YOR CHECKED: DJB

MISS UTILITY NOTE
 INFORMATION CONCERNING EXISTING UNDERGROUND UTILITIES WAS OBTAINED FROM AVAILABLE RECORDS. THE CONTRACTOR MUST DETERMINE THE EXACT LOCATION AND ELEVATION OF ALL EXISTING UTILITIES AND UTILITIES OR SONINGS BY DRIVING TEST PITS BY HAND, WELL IN ADVANCE OF THE START OF EXCAVATION. CONTACT "MISS UTILITY" AT 1-800-277-7777 48 HOURS PRIOR TO THE START OF EXCAVATION. IF CLEARANCES ARE LESS THAN SHOWN ON THIS PLAN OR TWELVE (12) INCHES, WHICHEVER IS LESS, CONTACT THE ENGINEER AND THE UTILITY COMPANY BEFORE PROCEEDING WITH CONSTRUCTION. CLEARANCES LESS THAN NOTED MAY REQUIRE REVISIONS TO THIS PLAN.

OWNER/DEVELOPER/APPLICANT
 WASHINGTON METRO AREA TRANSIT AUTHORITY
 6TH AND D ST NW
 WASHINGTON, DC 20004
 MASS TRANSIT AUTHORITY
 6 ST. PAUL STREET, SUITE 1204
 BALTIMORE, MD 21202
 NEW CARROLLTON DEVELOPER LLC
 7735 OLD GEORGETOWN ROAD
 SUITE 600
 BETHESDA, MD 20814

MAP 13	GRID DS, ES
TAX MAP 52, A1	ZONING CATEGORY: M-XT
WBSC 20P SHEET 20BNE07	XXXX
SITE DATUM	XXXX
HORIZONTAL: XXXXXX	XXXX
VERTICAL: XXXXXX	XXXX

PEDESTRIAN/BICYCLE CIRCULATION EXHIBIT		
FINAL INTERIM LAYOUT NEW CARROLLTON		
LANHAM (20th) ELECTION DISTRICT, PRINCE GEORGE'S COUNTY, MARYLAND		PROJECT NO. 1958-00-00
SHEET 1 OF 1		SCALE: 1" = 40'

P119580000\EXHIBITS\Pedestrian_circulation_EXH.SHT Scale= 40.0000 ft / in. User= DBiskel PLTrvr=PDF_Color_150.pltctg PenB= TEXT_SUB.tbl 10/13/2016 11:42:58 AM