

Tactical Bus Lanes Demonstration Project

Georgia Avenue (MD 97)
Public Information Meeting

Bus Priority Program
November 9, 2023

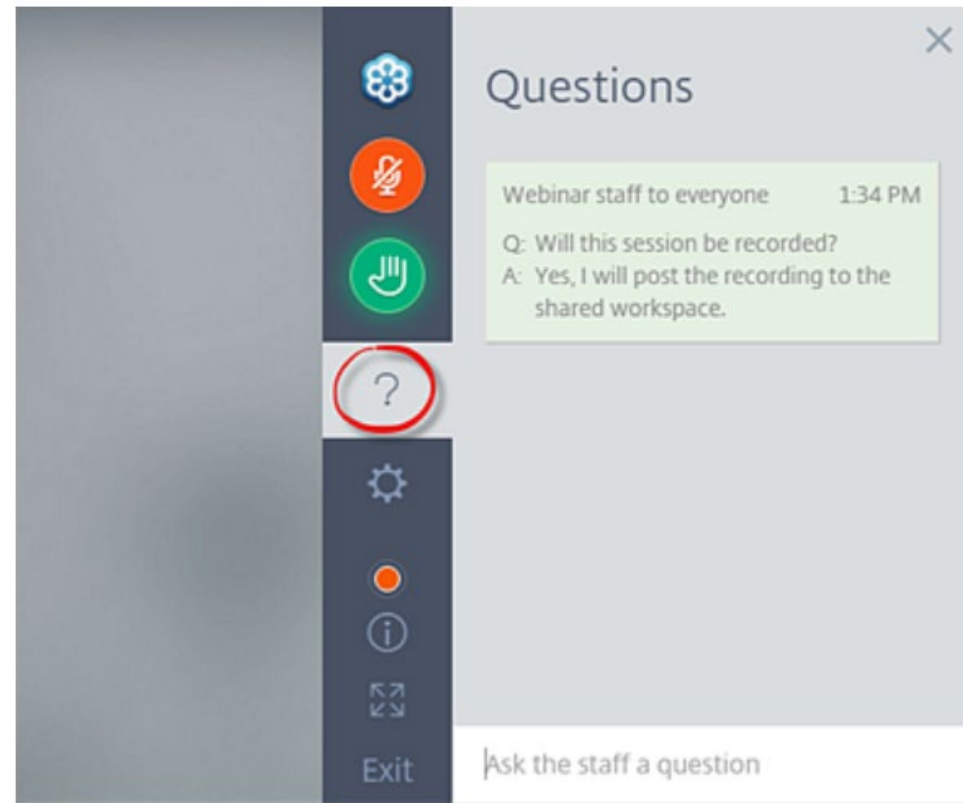
This meeting is being recorded



Housekeeping and GoToWebinar Tips

- All attendees are muted.
- To ask a question during the meeting, use the question mark tool and enter your question.
- At the end of the meeting, we will take additional questions and you can press the raise hand button to be recognized.
- You will be unmuted when called on to ask your question.

1. Select the Questions pane (desktop app) or ? (browser) in the toolbar.
2. Enter your question in the text, then press Enter.



Safety Moment



Courtesy Stops: **Nighttime** Metrobus riders can request to be dropped off between bus stops if the bus driver deems it safe to do so.

The courtesy stop program is an element of Metro's Better Bus Initiative

Housekeeping

- Type questions in the chat during the presentation; we will attempt to respond to all the questions during the call
- Please share your email in the chat if you'd like regular updates
- Send additional questions to BusPriority@wmata.com

Meeting Agenda

1. Introduction and Goals
2. Project Details
3. Updates
Since Prior Outreach
4. Schedule
5. Next Steps



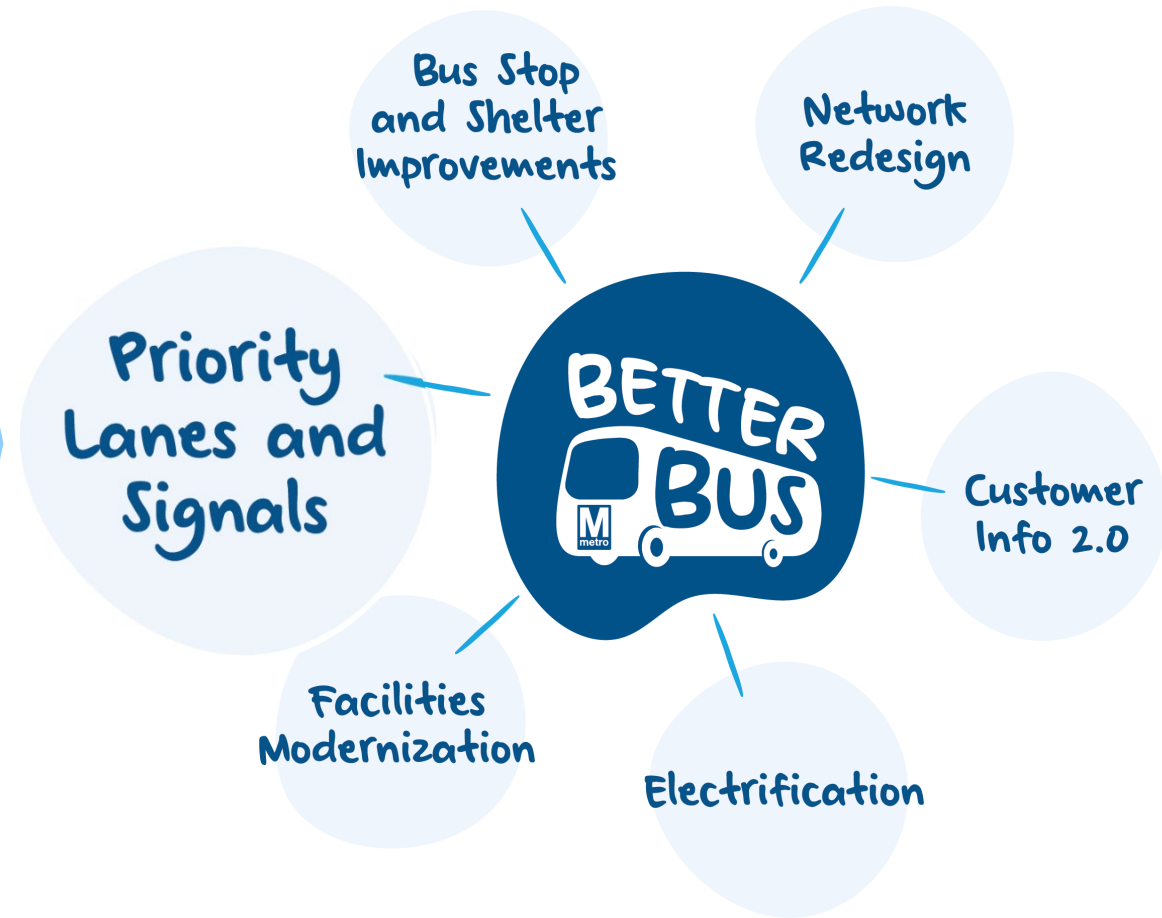
Metrobus Turning at Wayne Ave and Georgia Ave
Downtown Silver Spring, MD

Better Bus Initiatives

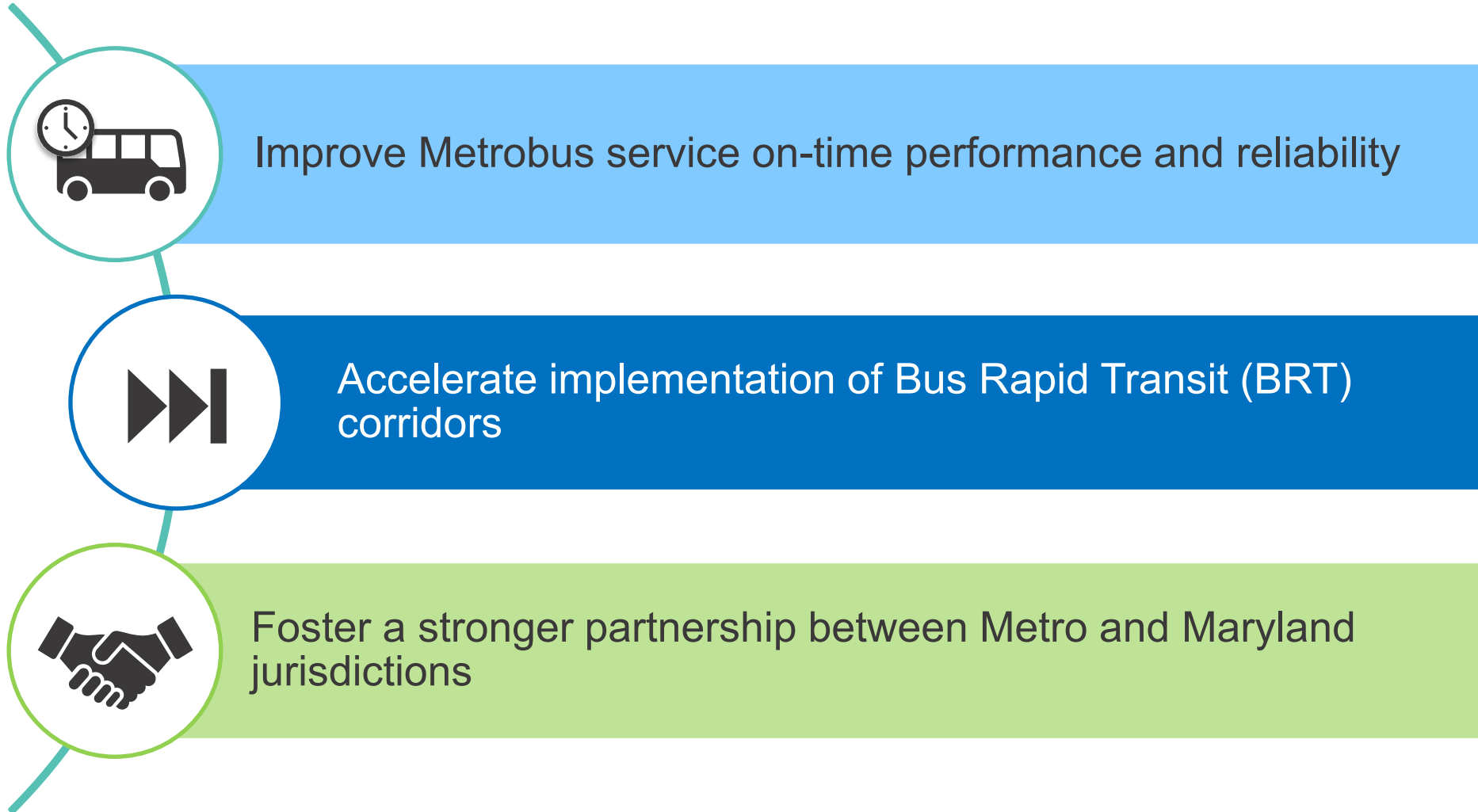


Purpose: Transform bus into a fast, frequent, reliable, affordable system that feels unified

Outcomes: 26 recommendations + Action Plan



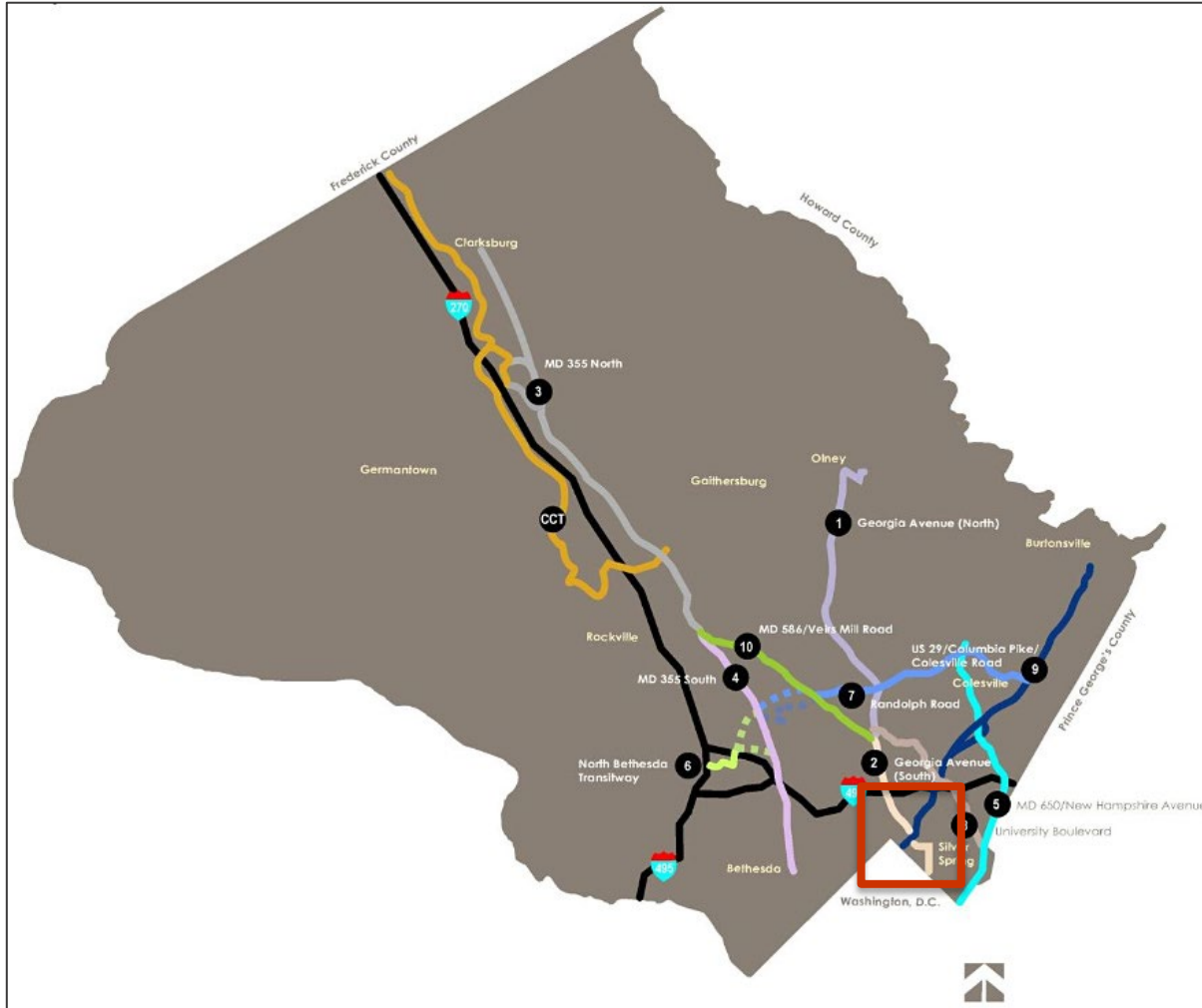
Goals of the Project



Multi-Agency Collaborative Effort



Montgomery County's BRT/Bus Priority Plans



Upcoming Bus Rapid Transit (BRT) Corridors in Montgomery County

University Boulevard (MD 193) Bus Lanes
Dennis Avenue to Amherst Avenue
Fall 2023

Veirs Mill Road (MD 586) Bus Lanes
Wheaton Transit Ctr. (MD 193) to MD 97
Summer 2024

The Tactical Bus Lanes project on Georgia Avenue (MD 97) also advances one of the projects identified in the Countywide Transit Corridors Functional Masterplan.

Countywide Transit Corridors Functional Masterplan (2013)

Why do we need Bus Lanes on Georgia Avenue?



Improved bus performance

- ✓ Enforced, dedicated bus lanes save 7 to 30% of trip time along segment
- ✓ Queue jumps reduce bus delays by an average of 12 seconds



Cost-efficient implementation of dedicated right-of-way for buses

- ✓ Red paint reduces unauthorized use of bus lanes by 40%



Increased safety

- ✓ Reduces conflicts between modes and reduces crashes by up to 14%



Reduced traffic congestion



Help meet regional climate goals



Bus lanes on Wayne Avenue
Silver Spring, MD

- Quick-build bus lanes use only red paint and signs
- Bus riders see benefits faster
- Supports Metro's Better Bus and Sustainability Initiatives and Montgomery County's Climate Action Plan.



Slow buses discourage use

Southbound



AM Peak
13.4 mph



PM Peak
12.6 mph

Northbound



AM Peak
10.6 mph



PM Peak
7.3 mph



A reliable bus system provides access to opportunity for all

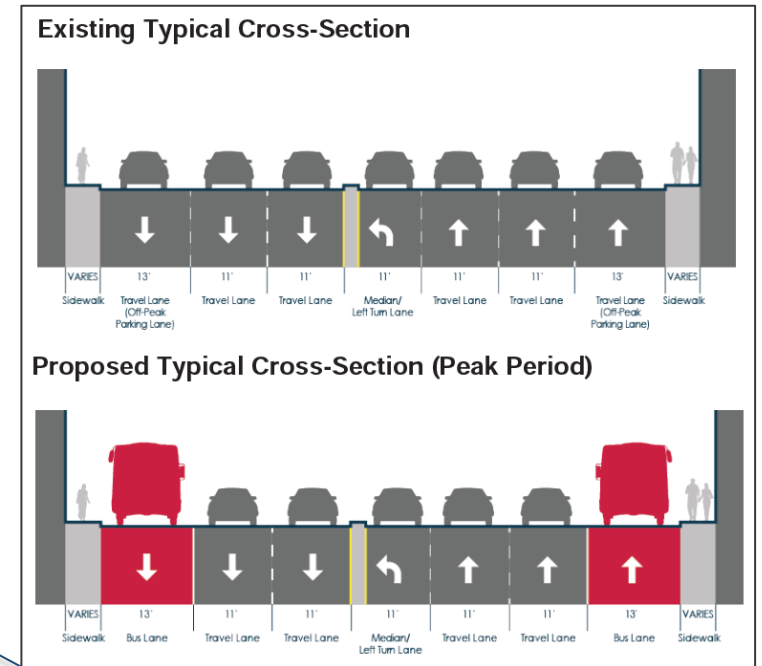
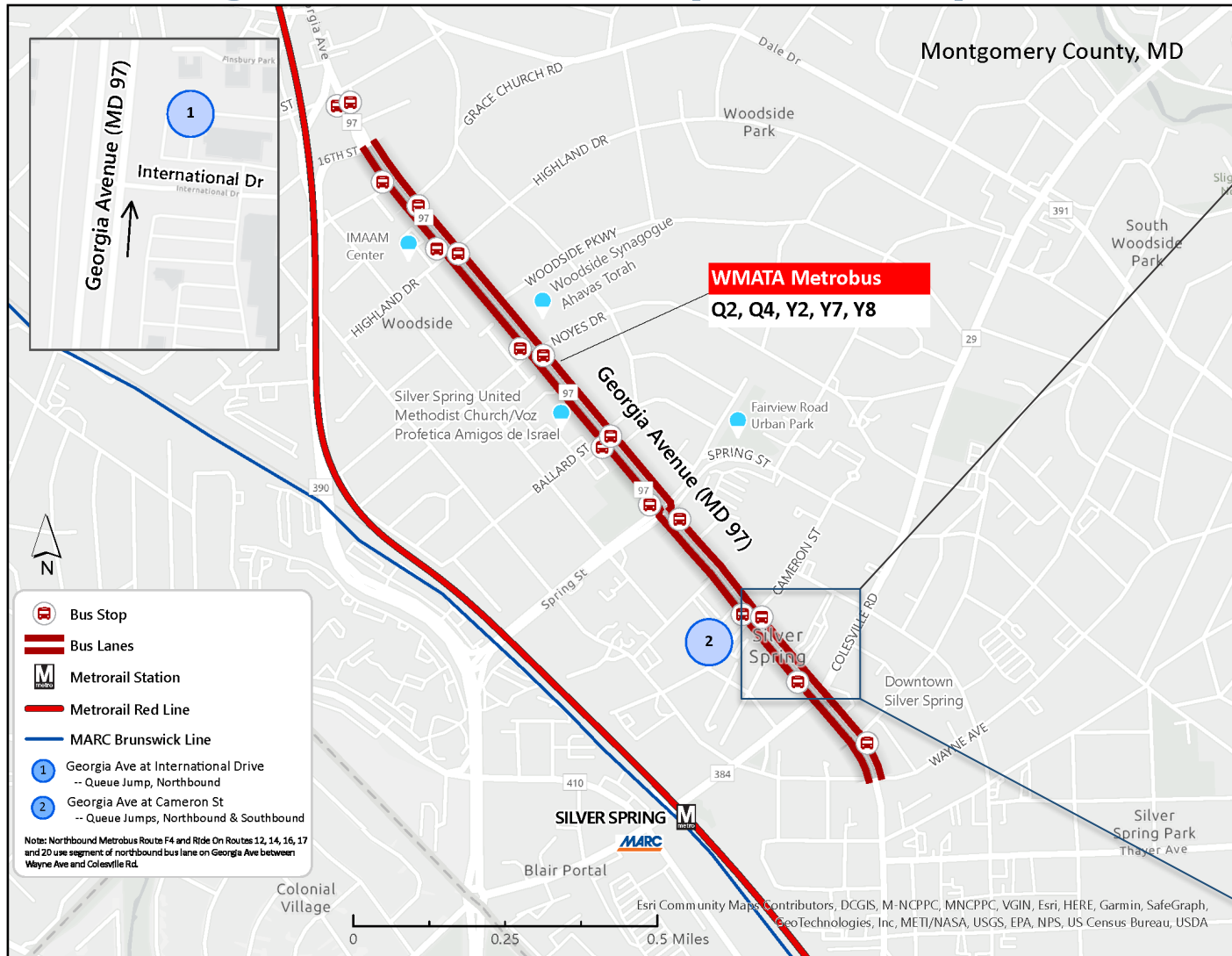
Route	Average Weekday Riders	People of Color	Low-income
F4	5,825	94%	60%
Q2,4	4,712	92%	58%
Y2,7,8	5,263	88%	52%
Total	15,799	91%	56%

Interactive Poll

Question: What items should MDOT, Metro, and MCDOT focus on to make the project successful?

- Buses are on-time more often
- Buses arrive more frequently
- Enforcement of the bus lanes
- Educating all road users (drivers, pedestrians, and bicyclists)
- Outreach to businesses and delivery companies

Georgia Avenue (MD 97) Tactical Bus Lanes



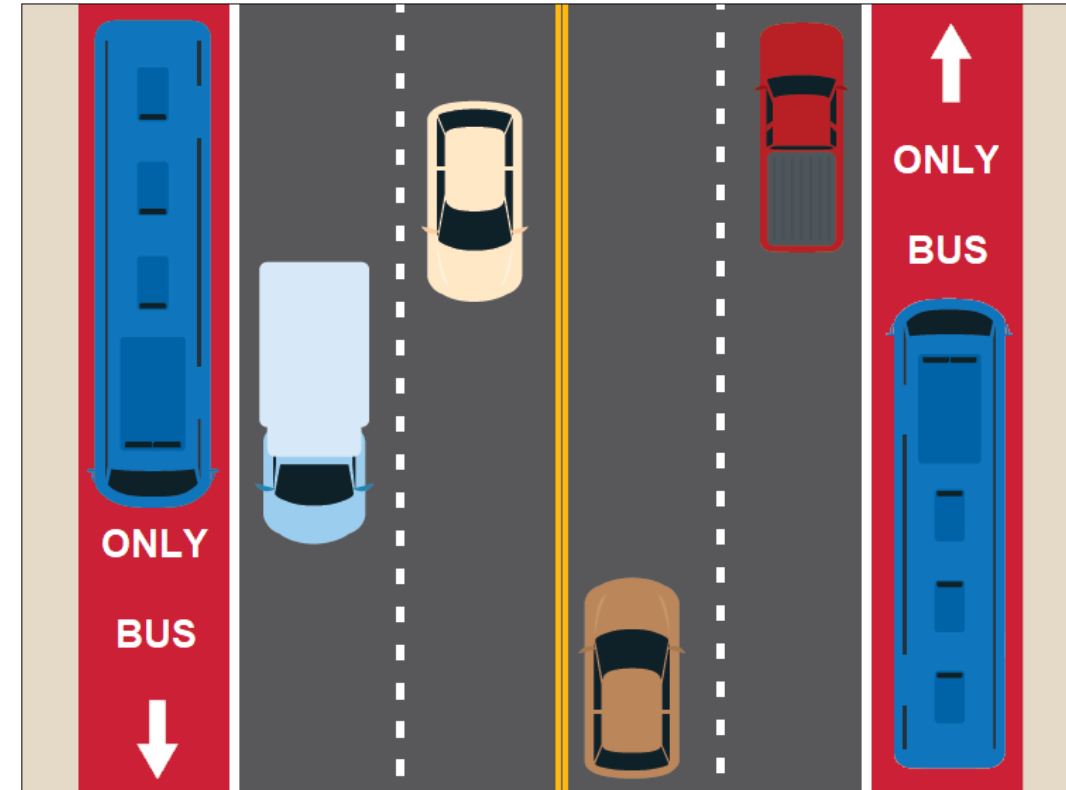
Bus Lane Hours



Peak Period Bus Lanes in Both Directions

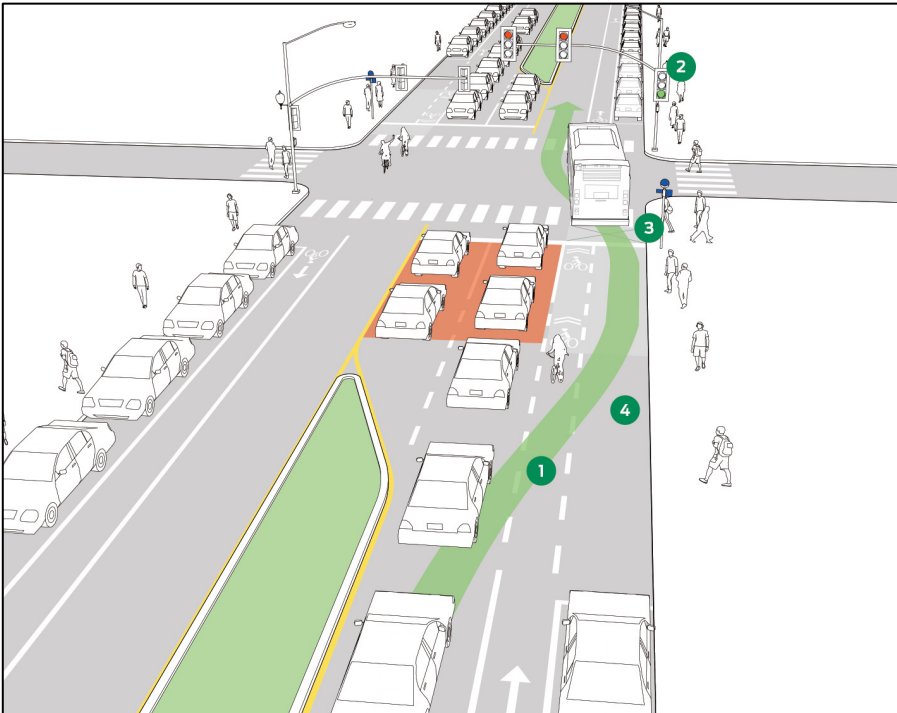
- 6:30-9:30 a.m. and 3:30-7:00 p.m.
- Monday through Friday
- Southbound and Northbound

Parking and loading allowed all other times



Queue Jumps on Georgia Ave (MD 97)

- 1. Georgia Ave at International Drive**
Northbound Queue Jump
- 2. Georgia Ave at Cameron Street**
Northbound and Southbound Queue Jumps



Source: Transit Street Design Guide, NACTO



Design Updates

- Northern limit of bus lanes adjusted to south leg of 16th Street (MD 390) intersection to improve transition with MD 97 Montgomery Hills Safety and Accessibility Project
- Georgia Avenue southbound bus lane ends at Fidler Lane to facilitate better movement of buses and vehicles based on traffic analysis





Outreach to share Bus Lane Hours of Operation

- **July 17, 2023** - Business Engagement for Parking and Loading Options on Georgia Avenue
- **July 26, 2023** - Presentation to the Greater Silver Spring Chamber of Commerce

Key Takeaways from Business Engagement Meetings

- Limited impacts to businesses due to peak period bus lanes in both directions
- Delivery trucks park along the corridor usually in the off-peak hours
- Residents and medical patients park in garages
- Deliveries primarily occur in off-peak periods
- Alleys are used for receiving shipments
- Some businesses asked about lack of enforcement for on-street parking
- Some bank customers park on-street (sometimes illegally) to access ATMs

Implementation Approach

- WMATA, MDOT, and DPW&T/MCDOT are working collaboratively to develop an implementation framework for tactical bus lanes, including funding and operational and maintenance requirements.
- Maryland State Highway Administration (SHA) will be generally administering the implementation of the project, overseeing construction and maintenance activities, in coordination with WMATA and the Counties.
- The partners will be further refining the funding and implementation strategy in the weeks ahead.

Project Schedule

Project Timeline (Pending Construction Funding)



Prepare contracting documents for procurement

Fall/Winter 2024



Award contract and give contractor Notice to Proceed (NTP)

Winter/Spring 2025



Implement tactical bus lanes queue jumps

Spring/Summer 2025



Performance evaluation

Date TBD

Timeline subject to change

Questions

Contact us

Anikwenze Ogbue
Project Manager, Bus Priority
aogbue@wmata.com

Joe Moges
Senior Safety Officer
MDOT SHA
JMoges@mdot.maryland.gov

Mark Terry
Chief, Traffic Engineering Studies
Montgomery County DOT
mark.terry@montgomerycountymd.gov

Bus Lanes Project Website:
<https://wmata.com/initiatives/strategic-plans/Bus-Lanes/>