

Metro Ridership Snapshot

September 2022



Washington Metropolitan Area Transit Authority

Table of Contents

- Rail Ridership
- Bus Ridership
- Parking Utilization
- [Online Ridership Data Portal](#)

Note: Percentage changes in this document represent year-over-year changes in ridership, compared to the same time, location, and day type **one year ago** unless noted as 'pre-pandemic' which then represents a comparison to three years ago. For more details, see [How to Use and Interpret Metro Ridership Data](#).

Bus ridership shown here is from Metro's automatic passenger counters (APCs), in both current and baseline months. Rail ridership and parking utilization is from the farebox system.

Overall Ridership in September

Rail

- Weekday ridership has increased 40% compared to September 2021.

Bus

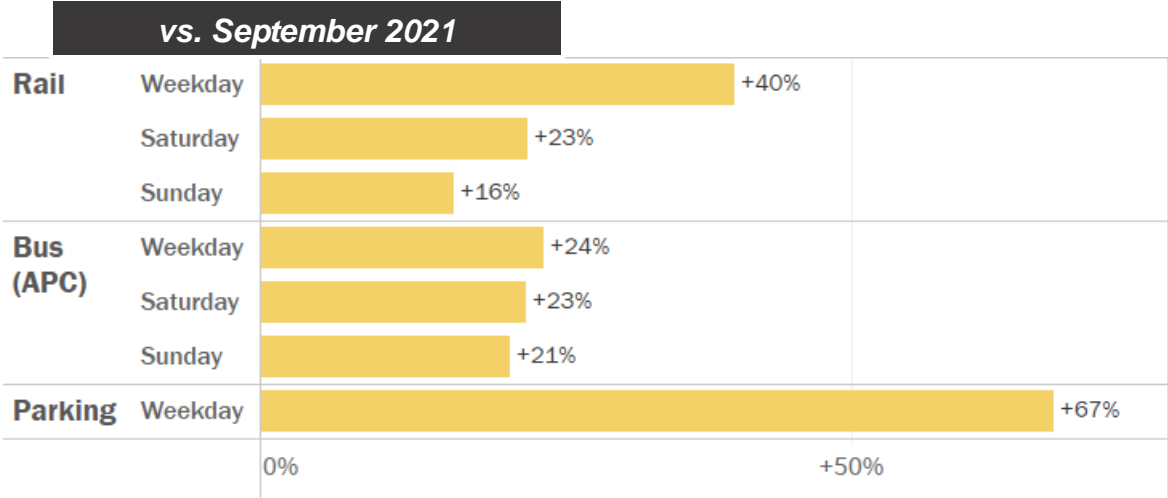
- Ridership has increased 20-25% across all service types compared to September 2021.

Parking

- Usage has increased 67% compared to September 2021

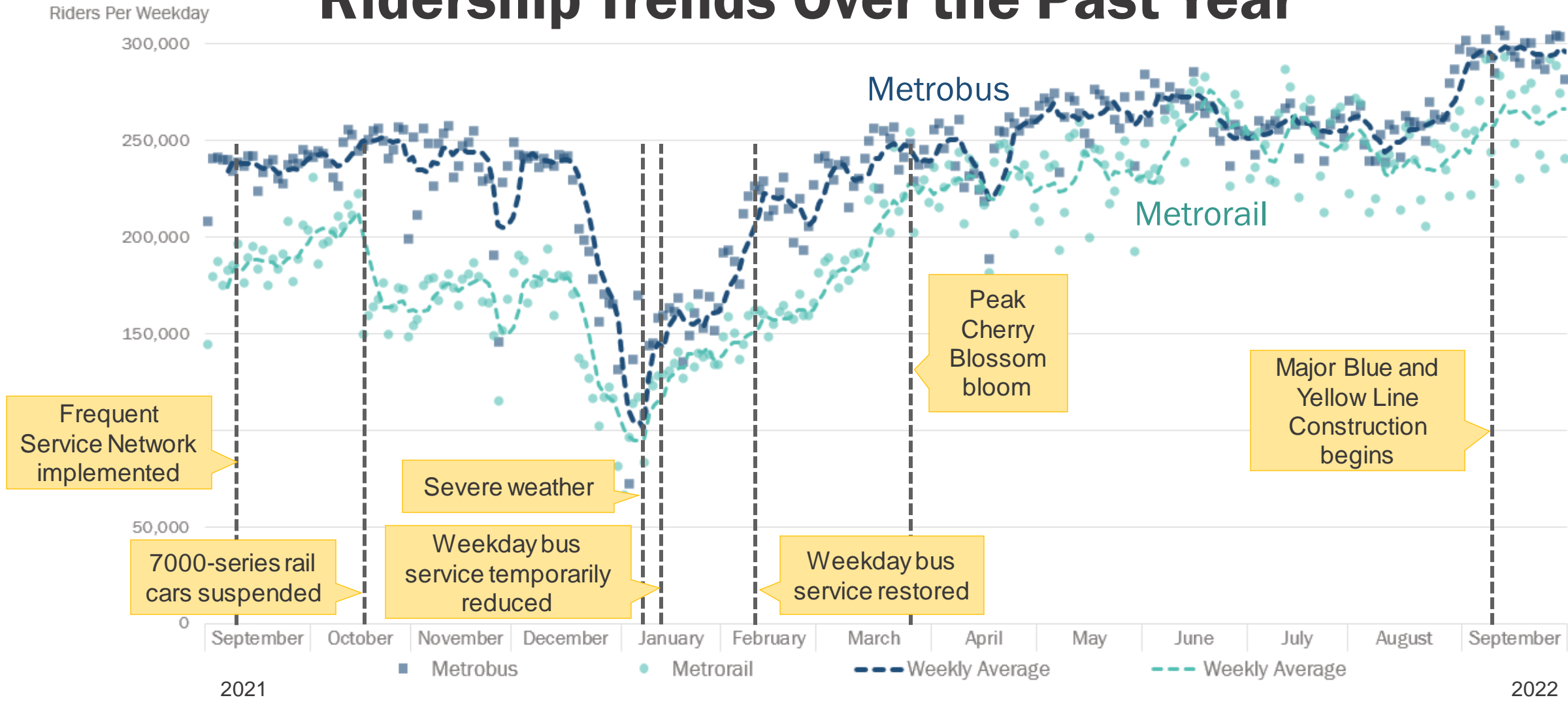
Rail saw the greatest growth on weekdays while bus ridership grew equally across service types compared to the same month the year prior.

Rail and bus ridership remained stable throughout September 2022. Wednesday, September 14th set highest day of ridership since the start of the pandemic at ~292,900 station entries.



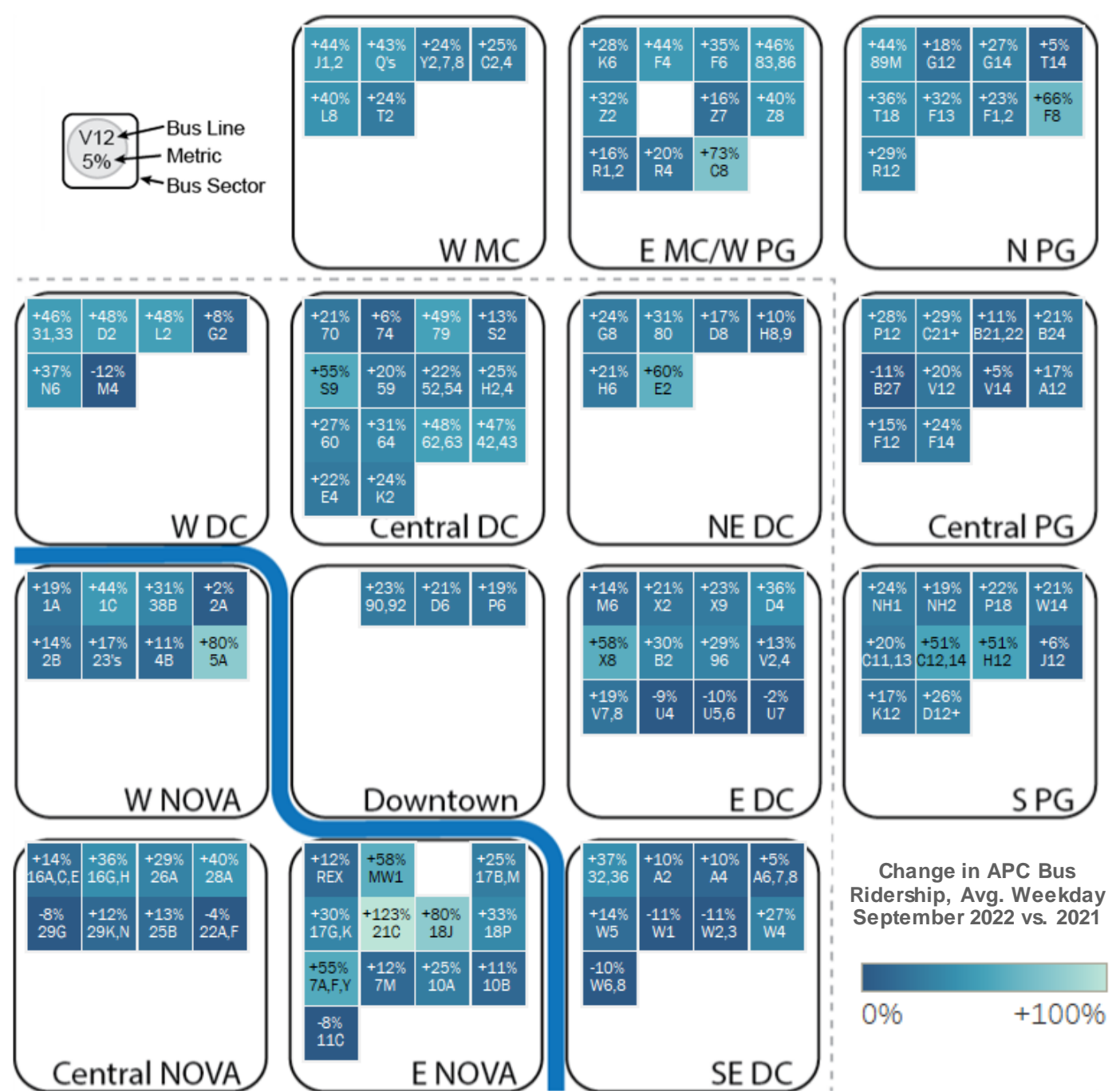
| September 2022 Averages | Weekday | Saturday | Sunday |
|-------------------------|---------|----------|---------|
| Rail | 261,000 | 173,000 | 120,000 |
| Bus (APC) | 296,000 | 186,000 | 145,000 |
| Parking | 12,000 | | |

Ridership Trends Over the Past Year



Metrobus Ridership

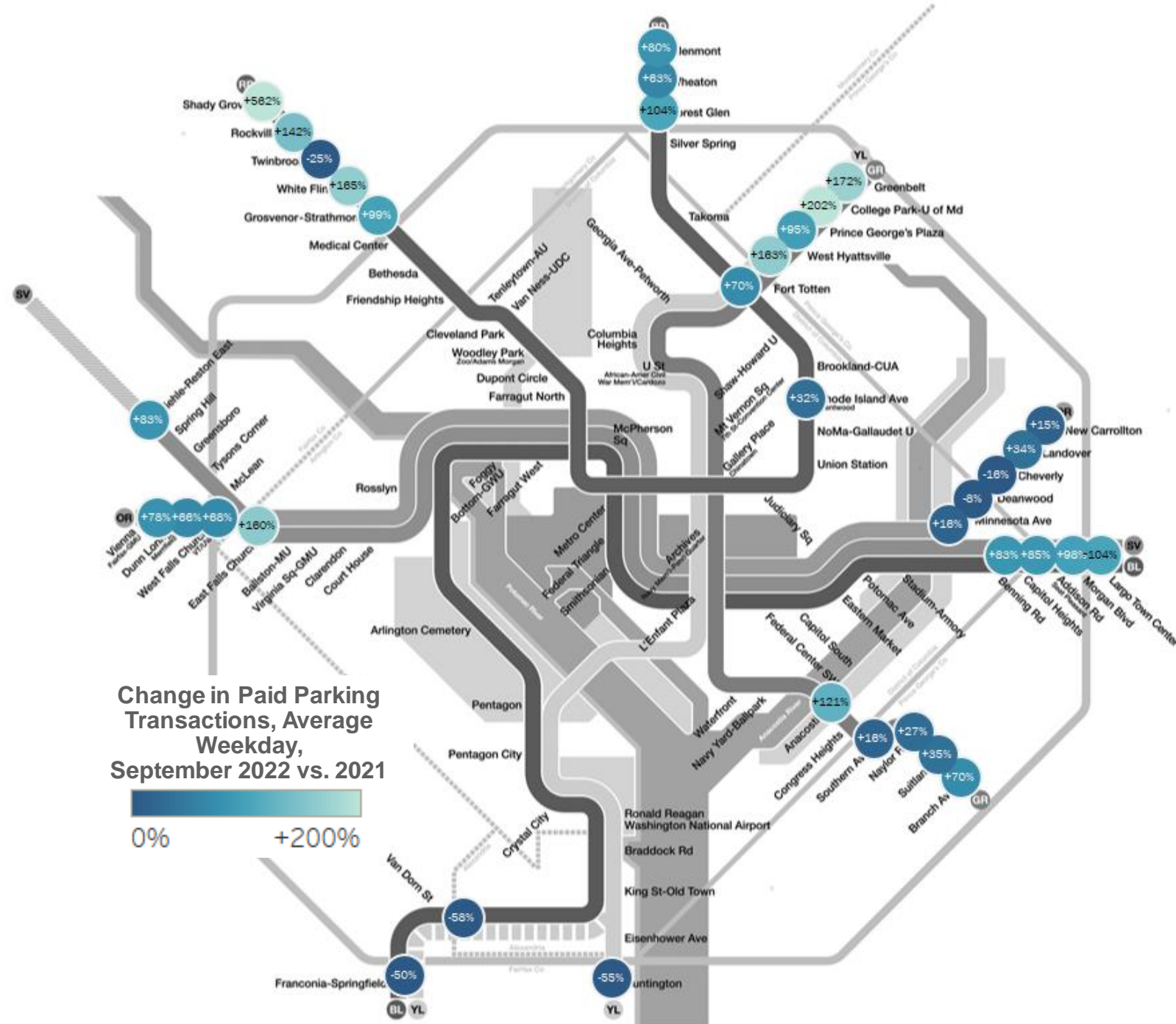
- Ridership is up between 20-25% on weekdays, Saturdays, and Sundays compared to September 2021, with the highest recovery on weekdays.
- About 3.7% of stop events were above crowding thresholds with more crowding on weekdays.
- Notes:
 - In September 2021, bus service levels were around 85% of pre-Covid. Current bus service levels are around 93% of pre-Covid levels on weekdays and 110-125% on weekends.



For more nuanced bus line information, additional data can be found on the [WMATA Ridership Data Portal](#). Bus ridership based on Automatic Passenger Counter data.

Metro Parking Transactions

- Parking usage has increased significantly at all stations without closures compared to September 2021.
 - Most stations grew between 70-170%
- Notes:
 - Orange Line stations between Stadium Armory and New Carrollton were closed September 1st through September 5th for the Platform Improvement Project.
 - Six stations (Braddock Road, King St. - Old Town, Eisenhower Ave, Huntington, Van Dorn St, Franconia-Springfield) closed on September 10th for Potomac Yard prep work.
 - Shady Grove and Rockville were closed for repairs from mid-September until early December 2021.
 - Four stations on the Green and Yellow Lines north of Fort Totten reopened in early September 2021

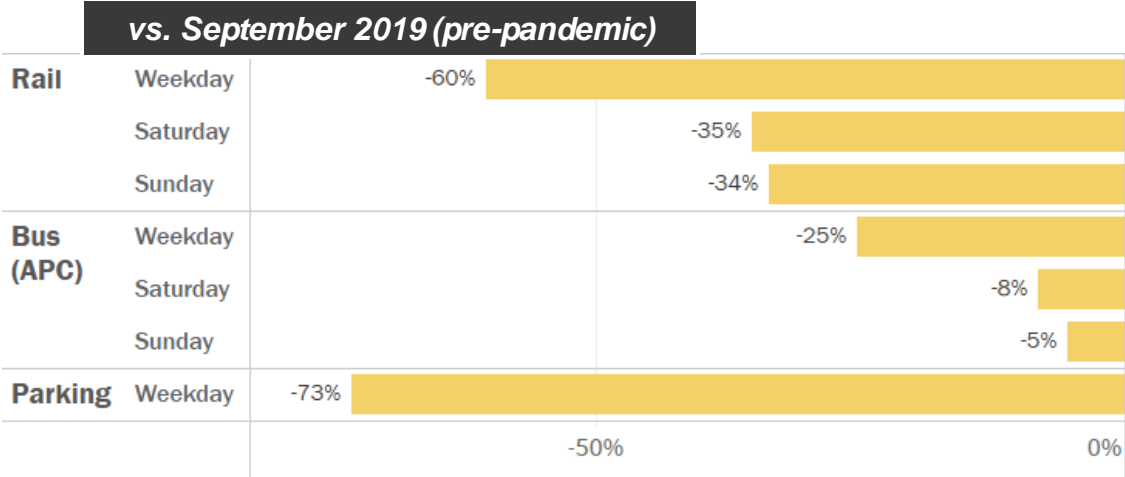


For more nuanced parking information, additional data can be found on the [WMATA Ridership Data Portal](https://wmata.com/ridership-data-portal).

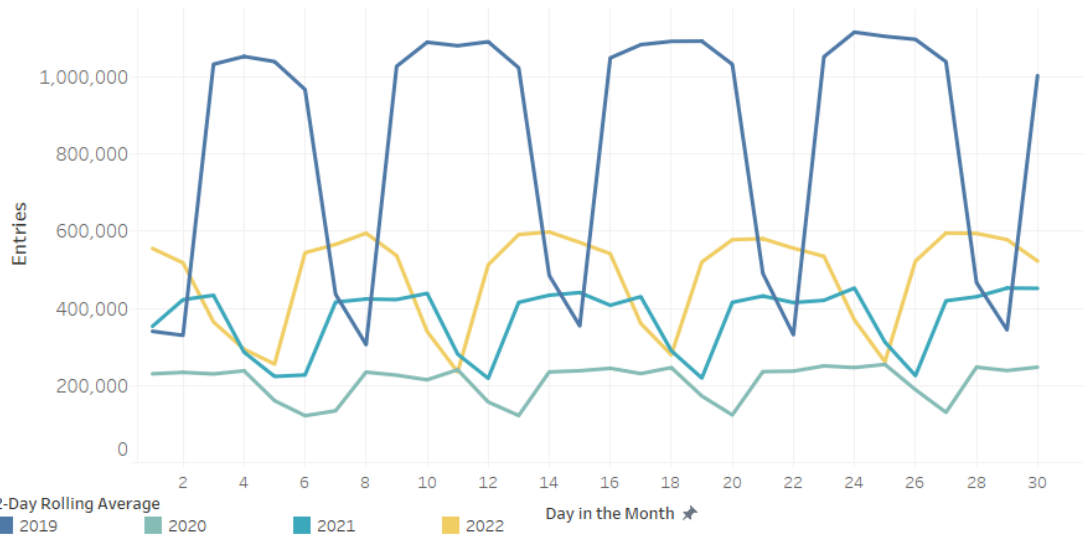
Pre-Pandemic Ridership Comparison

Current vs. pre-pandemic levels (September 2022 vs. September 2019):

- September **Rail** ridership was at 40% of pre-pandemic levels on weekdays and about 65% of pre-pandemic levels on weekends
- September **Bus** ridership was at 75% of pre-pandemic levels on weekdays
- September **Parking** usage was at 27% of pre-pandemic levels



September Ridership over the Past Four Years



| September 2019 Averages | Weekday | Saturday | Sunday |
|-------------------------|---------|----------|---------|
| Rail | 661,000 | 267,000 | 180,000 |
| Bus (APC) | 397,000 | 202,000 | 154,000 |
| Parking | 45,000 | | |