

Metro Ridership Snapshot

June 2025



Washington Metropolitan Area Transit Authority

Table of Contents

- Overall Ridership
- Ridership Trends Over the Past Year
- Metrorail Ridership
- Metrobus Ridership
- MetroAccess Network Ridership
- Metro Parking Transactions
- Pre-Pandemic Ridership Comparison

Note: Percentage changes in this document represent year-over-year changes in ridership, compared to the same time, location, and day type one year ago unless noted as 'pre-pandemic' which then represents a comparison to the same month from March 2019 - February 2020. For more details, see [How to Use and Interpret Metro Ridership Data](#).

Metrobus ridership shown here is from Metro's automatic passenger counters (APCs), in both current and baseline months. Metrorail ridership shown here is total (tap and no-tap) ridership recorded through faregates. MetroAccess Network ridership refers to the combined ridership from Metro-operated paratransit service as well as from the Abilities-Ride program which launched in September 2020. Parking transactions are from the farebox system.

Overall Ridership in June

Total Ridership

- Compared to June 2024, ridership increased by 11% overall, 11% on weekdays, 8% on Saturdays, and 7% on Sundays.

Rail

- Compared to June 2024, ridership increased by 22% overall, 22% on weekdays, 21% on Saturdays, and 16% on Sundays.

Bus

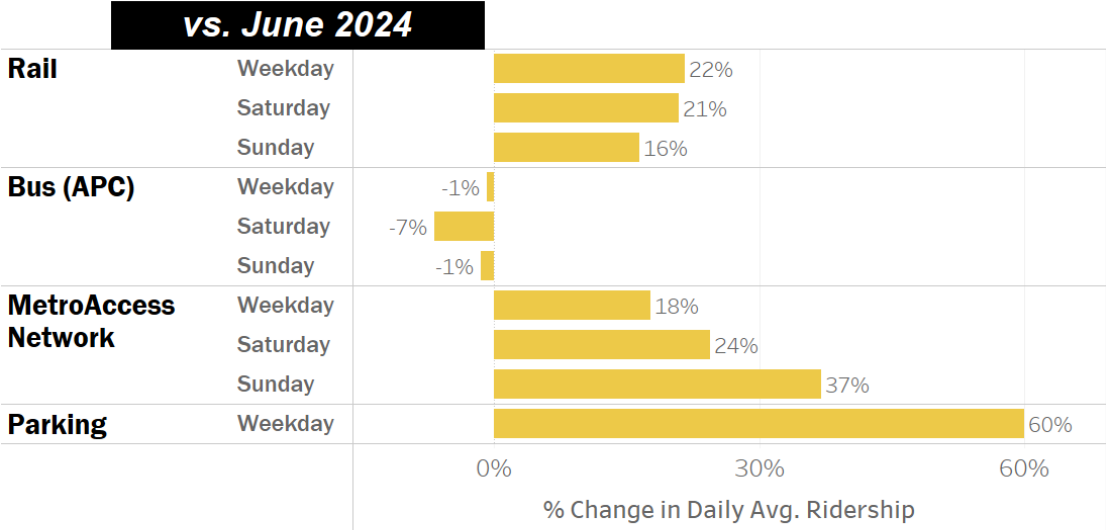
- Ridership decreased less than 1% overall, 1% on weekdays, 7% on Saturdays, and 1% on Sundays compared to June 2024.

MetroAccess Network

- Compared to June 2024, ridership increased by 22% overall, 18% on weekdays, 24% on Saturdays, and 37% on Sundays.

Parking

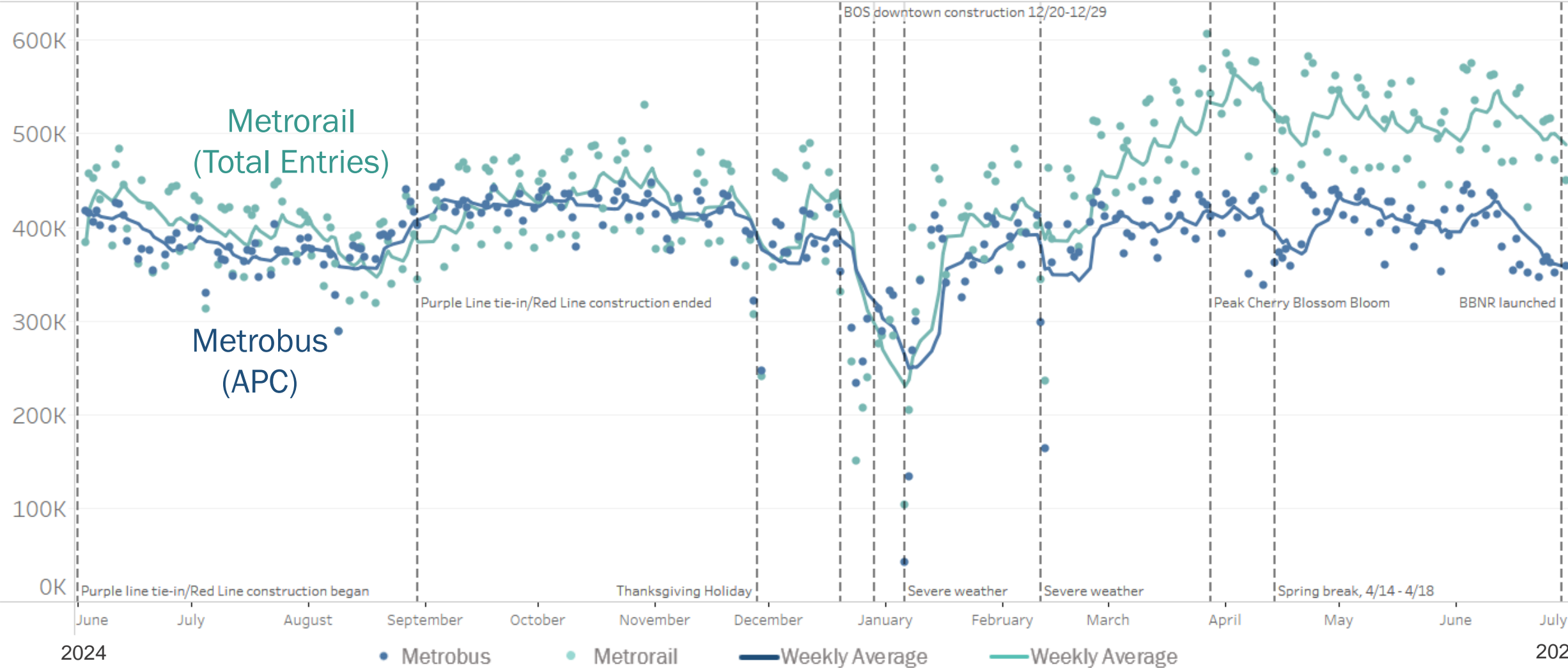
- Paid parking transactions have increased by 60% compared to June 2024.



June 2025 Averages	Weekday	Saturday	Sunday	Total Ridership
Rail	512,100	358,000	239,800	13,231,000
Bus (APC)	390,900	250,800	214,200	10,143,000
MetroAccess Network	9,600	5,100	4,200	237,000
Parking	31,800			642,000

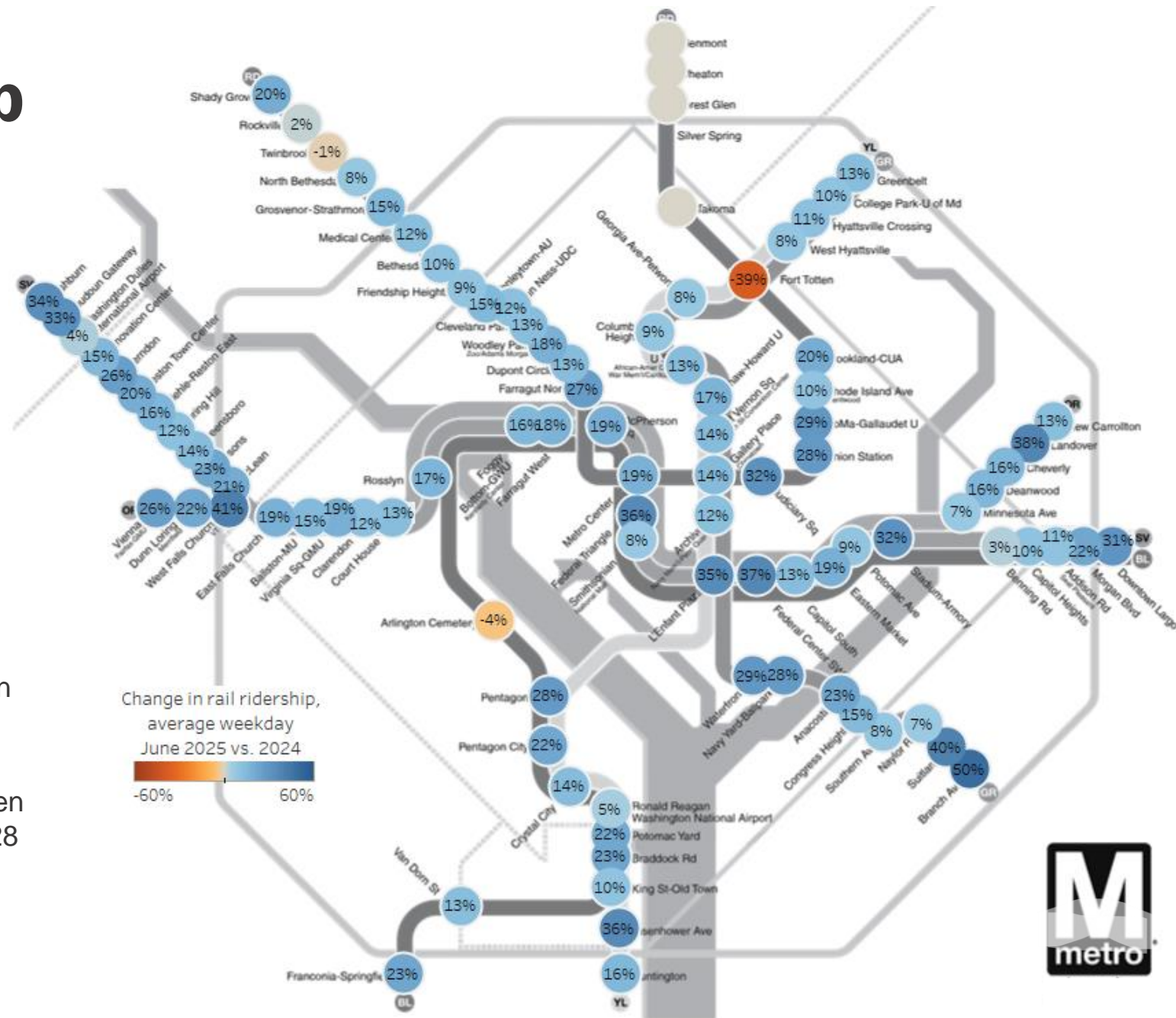


Ridership Trends Over the Past Year



Metrorail Ridership

- In June 2025, average daily Metrorail ridership was 512,000 rides on weekdays, 358,000 on Saturdays, and 240,000 on Sundays.
- Ridership increased by 22% overall, 22% on weekdays, 21% on Saturdays, and 16% on Sundays compared to June 2024.
- About 2% of customer time was crowded on average with most crowding occurring on weekdays.
- **Notes:**
 - In 2024, Purple Line tie-in construction began on June 1st. No Red Line service from Glenmont – Fort Totten in June 2024.
 - Due to weekend trackwork, no trains ran between Rhode Island Ave and Takoma stations from 6/28 – 6/29.



For more nuanced station information, additional data can be found on the [WMATA Ridership Data Portal](https://www.wmata.com/ridership/).

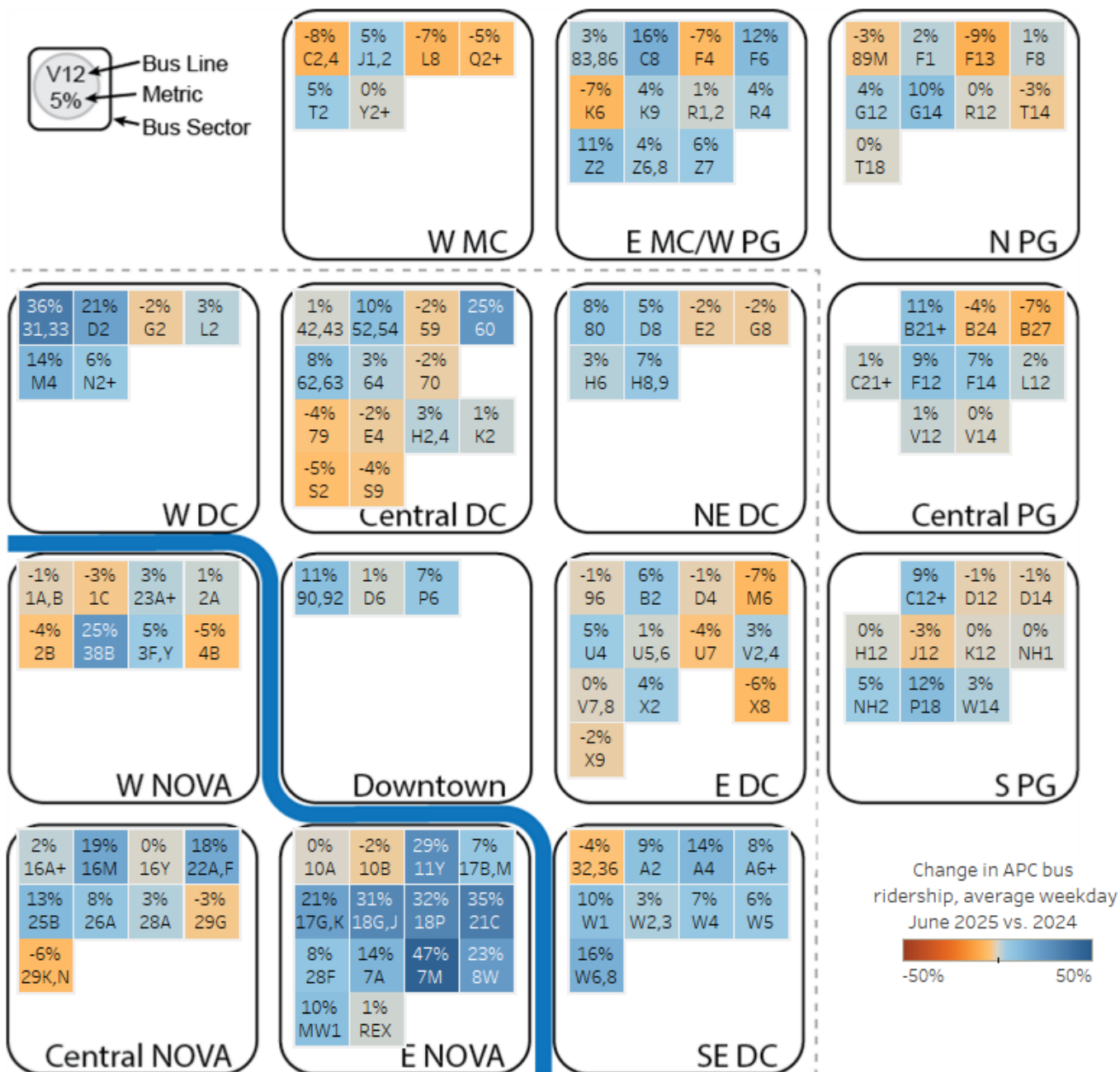
Metrobus Ridership

- In June 2025, average daily Metrobus ridership was 391,000 rides on weekdays, 251,000 on Saturdays, and 214,000 on Sundays.
- Metrobus ridership decreased less than 1% overall, 1% on weekdays, 7% on Saturdays, and 1% on Sundays compared to June 2024.
- About 2% of customer time was crowded on average with more crowding on weekdays.
- There were approximately 23,000 total shuttle rides made in June 2025, serving customers on:
 - Red Line service between Rhode Island Ave and Takoma stations from 6/28 – 6/29.

Note:

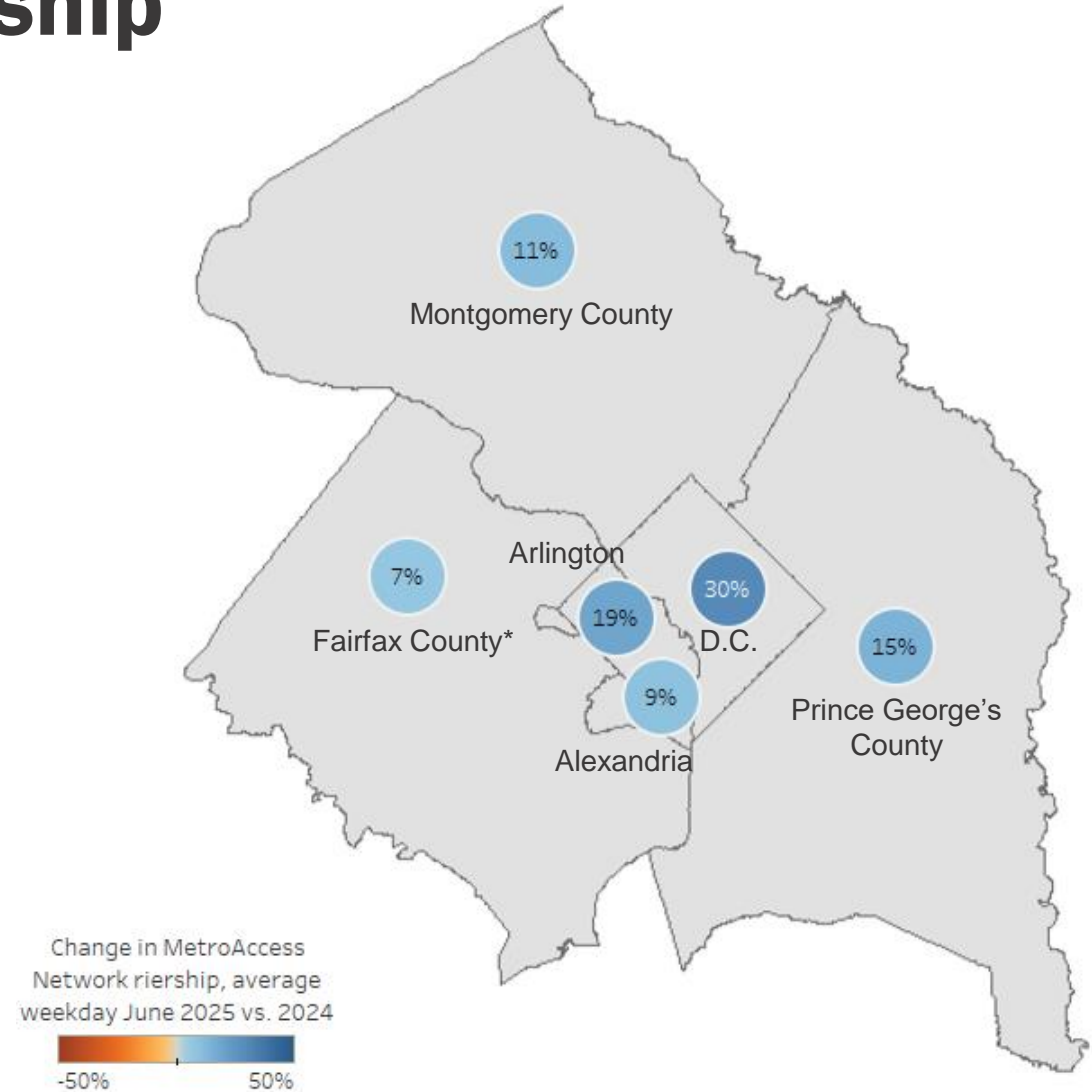
The [Better Bus Network Redesign \(BBNR\)](#) launched on 6/29, a comprehensive overhaul of the entire Metrobus network. Because all routes were changed, the graphic on the right reflects ridership from 6/1-6/28 on the old Metrobus network.

For more nuanced bus route information, additional data can be found on the [WMATA Ridership Data Portal](#). Bus ridership based on Automatic Passenger Counter data.



MetroAccess Network Ridership

- In June 2025, the MetroAccess network provided on average 9,600 rides on weekdays, 5,100 on Saturdays, and 4,200 on Sundays.
- MetroAccess network ridership is up 22% overall, 18% on weekdays, 24% on Saturdays, and 37% on Sundays compared to June 2024.
- **Notes:**
 - The MetroAccess network comprises rides made via our paratransit service, MetroAccess, as well as rides requested through the Abilities-Ride program which is a curb-to-curb transportation option for MetroAccess-enrolled customers who opt in and is operated by local taxi companies and transportation network companies.
 - Metro Access-eligible customers' rail and bus rides are counted in overall rail and bus ridership.

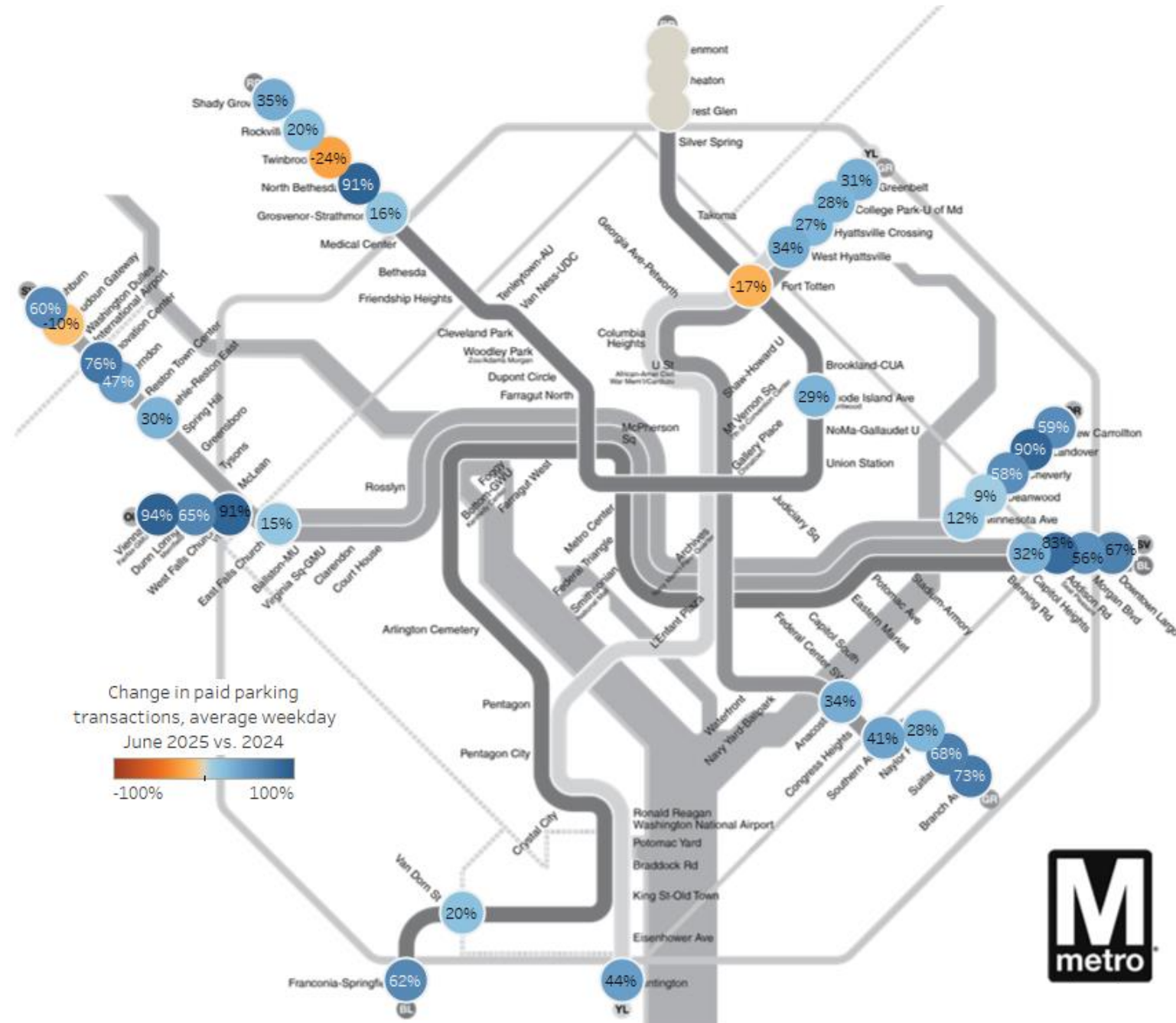


*Fairfax City and Falls Church are counted here as a part of Fairfax County



Metro Parking Transactions

- In June 2025, there were 32,000 average weekday paid parking transactions.
- Weekday paid parking transactions increased 60% compared to June 2024.
- **Notes:**
 - In 2024, Purple Line tie-in construction began on June 1st. No Red Line service from Glenmont – Fort Totten in June 2024.



For more nuanced parking information, additional data can be found on the [WMATA Ridership Data Portal](https://wmata.com/ridership-data-portal).

Pre-Pandemic Ridership Comparison

Total ridership

- Ridership was at 92% of pre-pandemic levels (June 2019) overall, 86% on weekdays, 20% above on Saturdays, and 31% above on Sundays.

Rail

- Ridership was at 85% of pre-pandemic ridership overall, 77% on weekdays, 28% above on Saturdays, and 30% above on Sundays.

Bus

- Ridership was 4% above pre-pandemic ridership overall, at pre-pandemic ridership on weekdays, 11% above on Saturdays, and 33% above on Sundays.

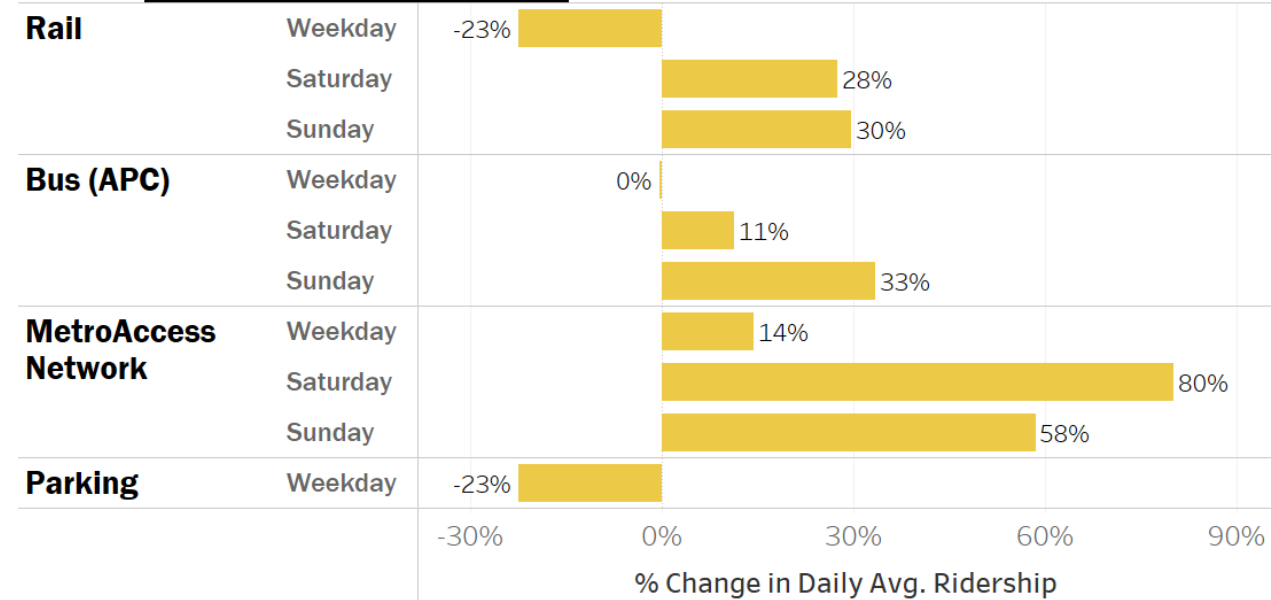
MetroAccess

- Ridership was 22% above pre-pandemic ridership overall, 14% on weekdays, 80% on Saturdays, and 58% on Sundays.

Parking

- Paid parking transactions were at about 77% of pre-pandemic levels.

vs. June 2019



June 2019 Averages	Weekday	Saturday	Sunday	Total Ridership
Rail	661,500	280,700	184,900	15,558,000
Bus (APC)	392,400	225,300	160,500	9,777,000
MetroAccess Network	8,400	2,800	2,600	195,000
Parking	41,000			824,000