

Metro Ridership Snapshot



July 2025

Washington Metropolitan Area Transit Authority

Table of Contents

- Overall Ridership
- Ridership Trends Over the Past Year
- Total Monthly Ridership
- Metrorail Ridership
- Metrobus Ridership
- MetroAccess Network Ridership
- Metro Parking Transactions

Note: Percentage changes in this document represent year-over-year changes in ridership, compared to the same time, location, and day type **one year ago**. For more details, see [How to Use and Interpret Metro Ridership Data](#).

Metrobus ridership shown here is from Metro's automatic passenger counters (APCs), in both current and baseline months. Metrorail ridership shown here is total (tap and no-tap) ridership recorded through faregates. MetroAccess Network ridership refers to the combined ridership from Metro-operated paratransit service as well as from the Abilities-Ride program which launched in September 2020. Parking transactions are from the farebox system.

Overall Ridership in July

Total Ridership

- Compared to July 2024, ridership increased by 6% overall and 8% on weekdays, while it decreased 2% on weekends.

Rail

- Compared to July 2024, ridership increased by 20% overall, 22% on weekdays, 6% on Saturdays, and 7% on Sundays.

Bus*

- Ridership decreased by 7% overall, 7% on weekdays, and 10% on weekends compared to July 2024.

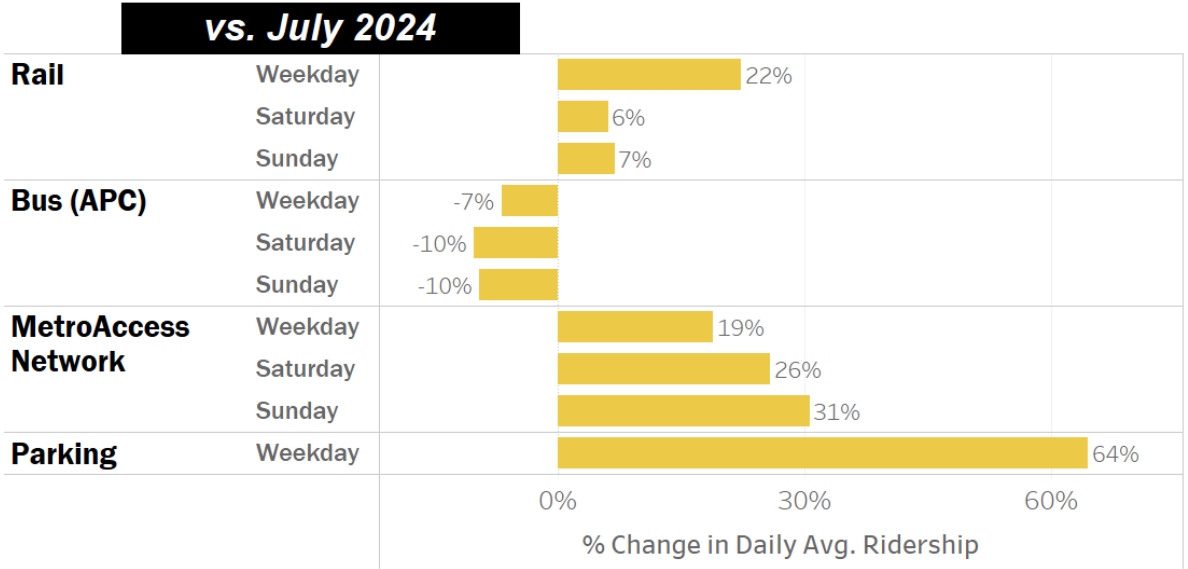
MetroAccess Network

- Compared to July 2024, ridership increased by 20% overall, 19% on weekdays, 26% on Saturdays, and 31% on Sundays.

Parking

- Paid parking transactions have increased by 64% compared to July 2024.

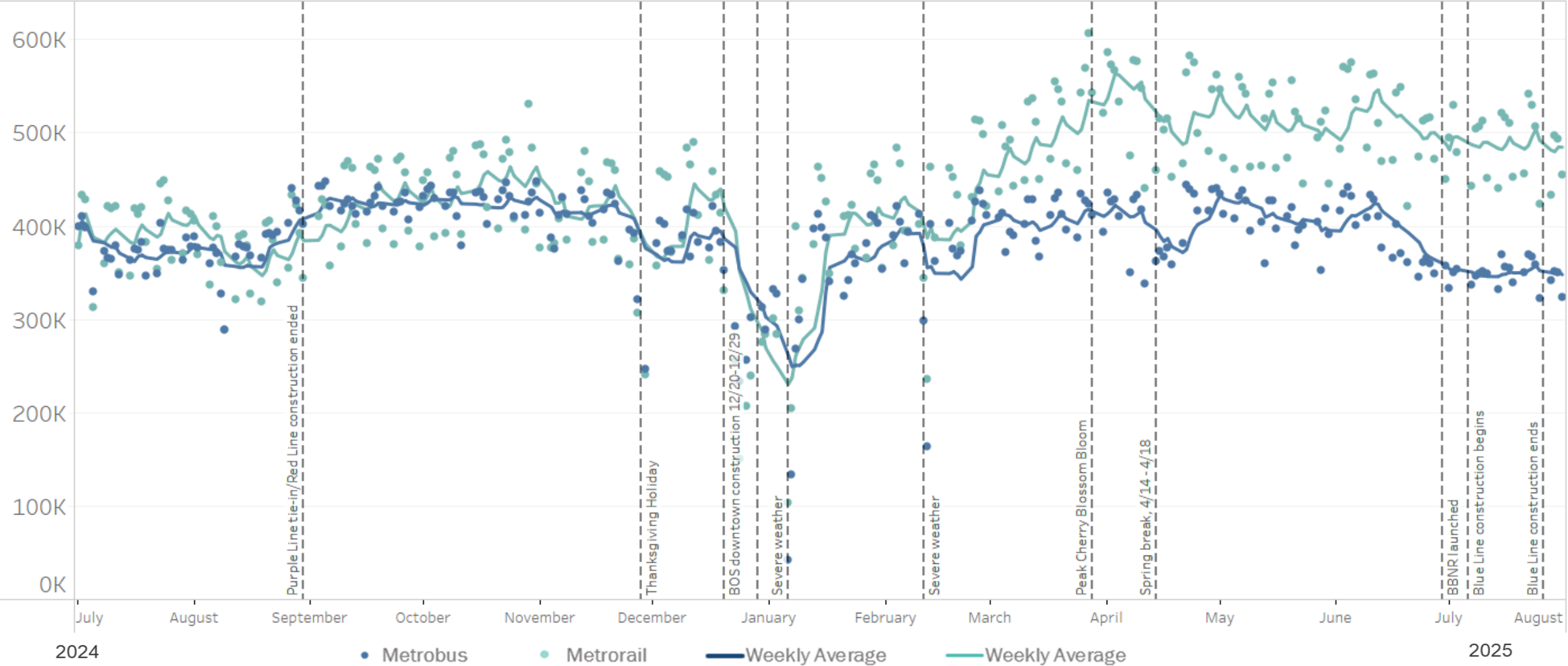
*The [Better Bus Network Redesign \(BBNR\)](#) launched on 6/29/2025, a comprehensive overhaul of the entire Metrobus network, including all new routes and route names. Ridership typically dips after major bus network redesigns as customers get used to the new network.



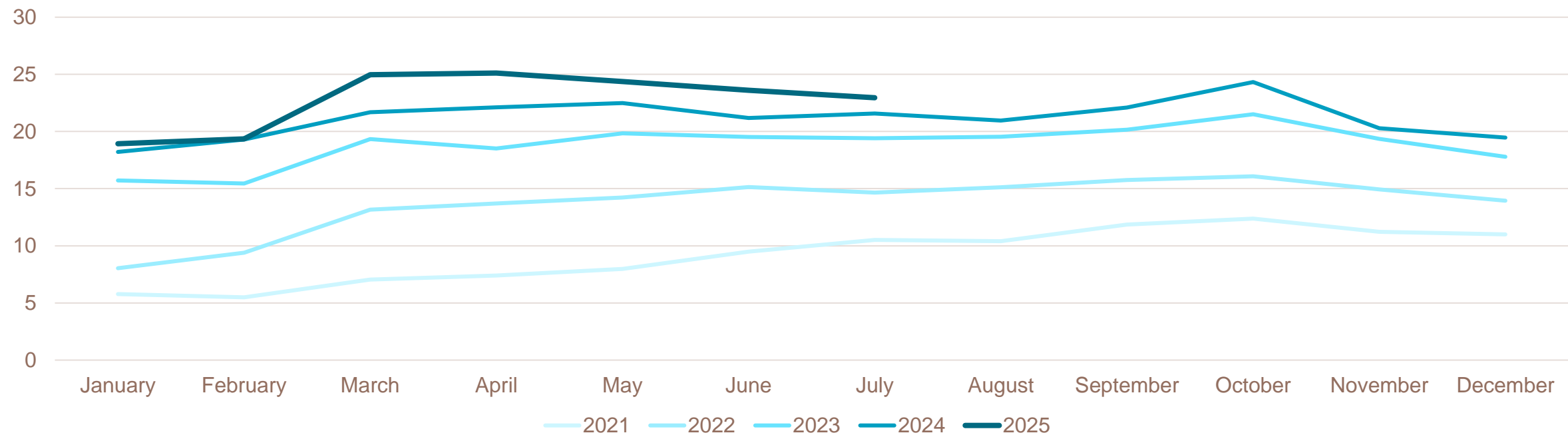
July 2025 Averages	Weekday	Saturday	Sunday	Total Ridership
Rail	486,100	286,300	209,400	12,677,000
Bus (APC)	348,000	228,300	194,900	9,348,000
MetroAccess Network	9,600	4,700	4,100	247,000
Parking	29,900			662,000



Ridership Trends Over the Past Year



Total Monthly Ridership (millions)



22.2 million total trips
in July 2025
6% higher vs. 2024
844,000 average
weekday trips

12.7 million rail trips
in July 2025
20% higher vs. 2024
486,000 average
weekday trips

9.3 million bus trips
in July 2025
7% lower vs. 2024
348,000 average
weekday trips

247 thousand access
trips in July 2025
20% higher vs. 2024
9,600 average weekday
trips

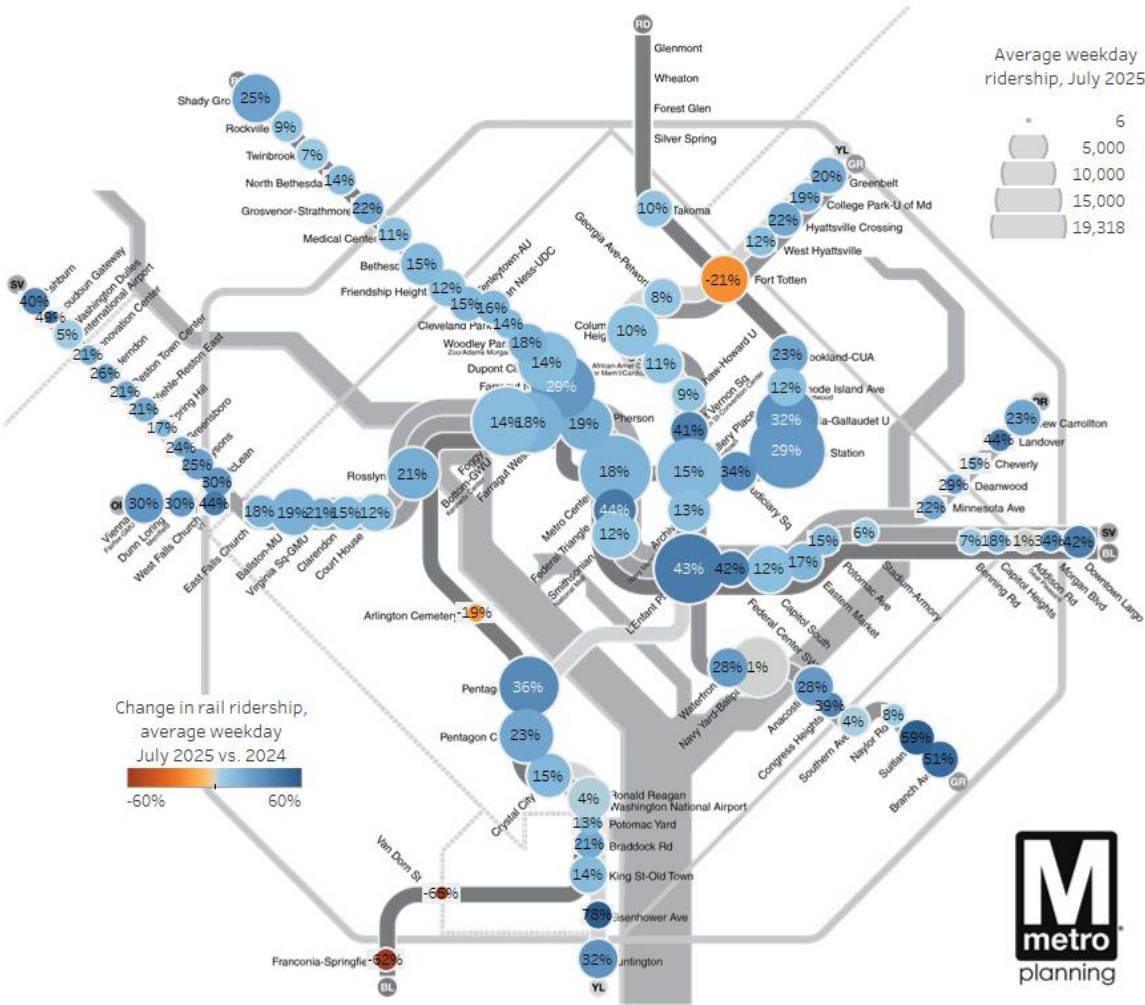


Metrorail Ridership

- In July 2025, average daily Metrorail ridership was 486,000 rides on weekdays, 286,000 on Saturdays, and 209,000 on Sundays.
- Ridership increased by 20% overall, 22% on weekdays, 6% on Saturdays, and 7% on Sundays compared to July 2024.
- About 2% of customer time was crowded on average with most crowding occurring on weekdays.

Notes:

- In 2024, Purple Line tie-in construction began on June 1st. No Red Line service from Glenmont – Silver Spring in July 2024.
- Due to planned construction, no trains served Franconia-Springfield and Van Dorn from July 5 – 26, 2025.

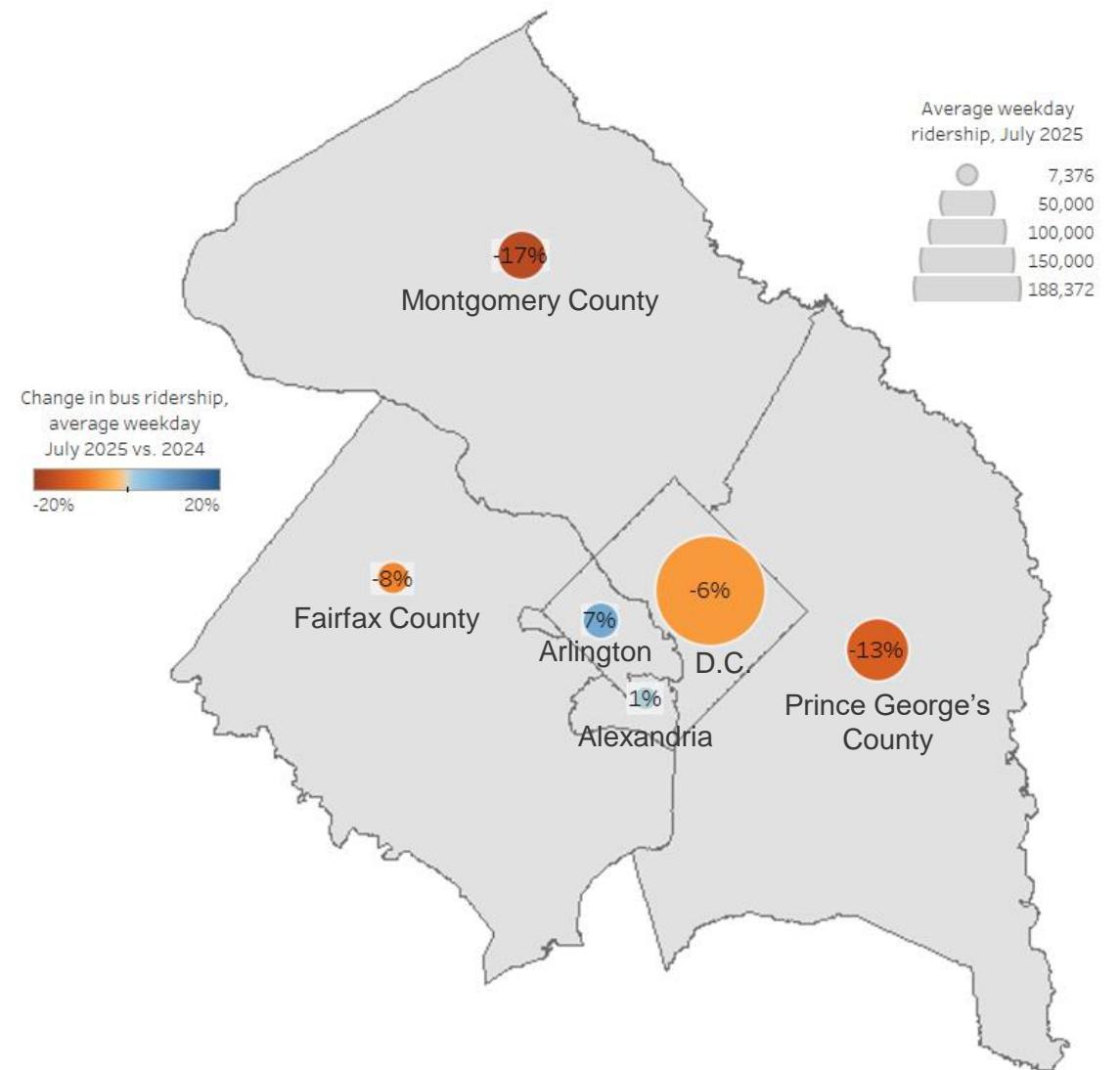


Metrobus Ridership

- In July 2025, average daily Metrobus ridership was 348,000 rides on weekdays, 228,000 on Saturdays, and 195,000 on Sundays.
- Ridership decreased by 7% overall, 7% on weekdays, and 10% on weekends compared to July 2024.
- About 2% of customer time was crowded on average with most crowding occurring on weekdays.

Notes:

- There were approximately 132,000 total shuttle rides made in July 2025, serving customers on:
 - Blue Line service during closures of Franconia-Springfield and Van Dorn St stations for construction from 7/5-7/26.
- The [Better Bus Network Redesign \(BBNR\)](#) launched on 6/29/2025, a comprehensive overhaul of the entire Metrobus network. Ridership typically dips after major bus network redesigns as customers get used to the new network.



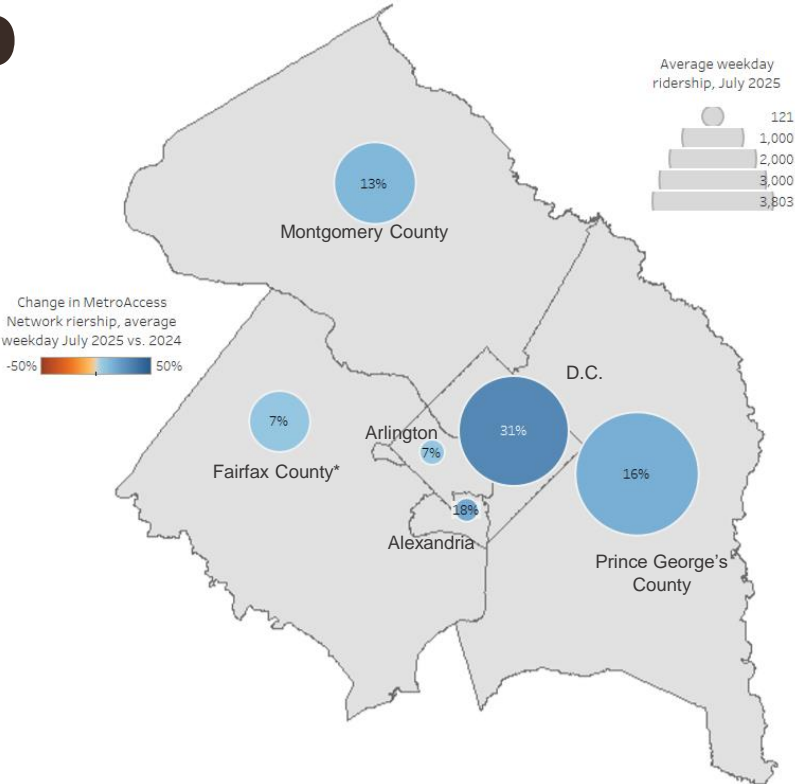
Because all routes were changed, the graphic above now shows year-over-year change in bus boardings by jurisdiction based on bus stop location.

MetroAccess Network Ridership

- In July 2025, the MetroAccess network provided on average 9,600 rides on weekdays, 4,700 on Saturdays, and 4,100 on Sundays.
 - MetroAccess paratransit service provided on average 3,500 rides on weekdays, 1,600 rides on Saturdays, and 1,400 rides on Sundays.
 - Abilities-Ride providers received requests for an average of 6,100 rides per weekday, 3,100 rides per Saturday, and 2,800 rides per Sunday.
- MetroAccess network ridership is up 20% overall, 19% on weekdays, 26% on Saturdays, and 31% on Sundays compared to July 2024.
 - MetroAccess paratransit service ridership is down 16% on weekdays, 15% on Saturdays, and 12% on Sundays.
 - Abilities-Ride ridership is up 57% on weekdays, 66% on Saturdays, and 72% on Sundays

Notes:

- The MetroAccess network comprises rides made via our paratransit service, MetroAccess, as well as rides requested through the Abilities-Ride program.
- Metro Access-eligible customers’ rail and bus rides are counted in overall rail and bus ridership.



July 2025 Averages	Weekday	Saturday	Sunday
MetroAccess	3,500	1,600	1,400
Abilities-Ride	6,100	3,100	2,800
Total	9,600	4,700	4,100

*Fairfax City and Falls Church are counted here as a part of Fairfax County



Metro Parking Transactions

- In July 2025, there were 30,000 average weekday paid parking transactions.
- Weekday paid parking transactions increased 64% compared to July 2024

Notes:

- Due to planned construction, no trains served Franconia-Springfield and Van Dorn from 7/5-7/26.

