



Solar Carport Project

Anacostia, Cheverly, Naylor Rd and Southern Ave stations **GR** **OR**

FACT SHEET

Overview

As part of Metro's Energy Action Plan to advance Metro and the region's sustainability goals, solar carports are coming to Metro parking facilities. TotalEnergies is installing and subsidiaries of MN8 Energy LLC will own and operate solar canopies that can produce clean energy for the region.



11 acres of solar panels, equivalent to 8 football fields



Nearly 10 megawatts of electrical capacity

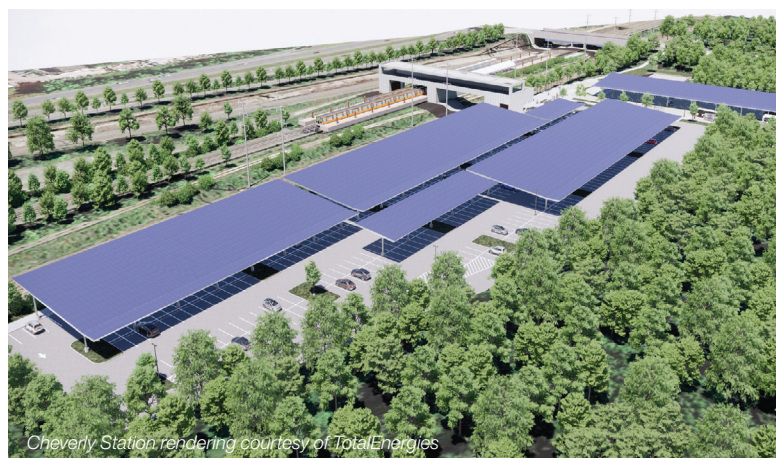


Generate power equivalent to the power used by 1,100 homes

Goals and Benefits

- Provide renewable energy to Pepco's service area by working with TotalEnergies and subsidiaries of MN8 Energy LLC to install solar panels.
- Support Metro's operating budget through long-term revenue from subsidiaries of MN8 Energy LLC which will own and operate the solar power system.
- Improve the customer's experience through covered parking, lighting and other safety enhancements.

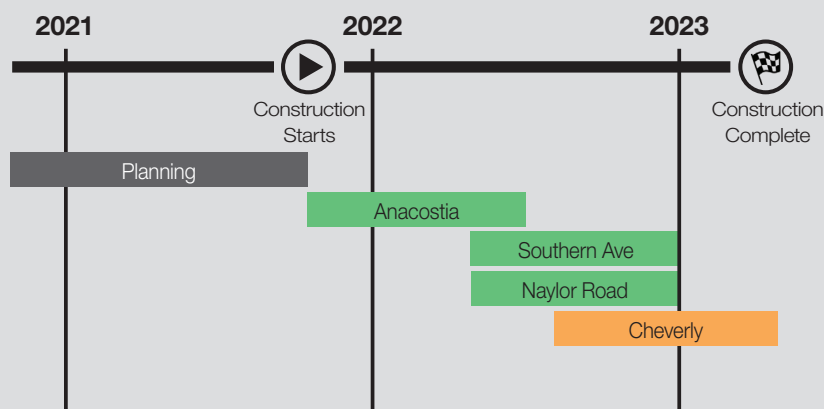
Renewable Energy Technology



Solar carports are overhead canopies built of steel that support solar panels which collect sunlight, a renewable energy source, that is converted to electricity. The electricity will be sent to the utility company and finally delivered to local homes and businesses.

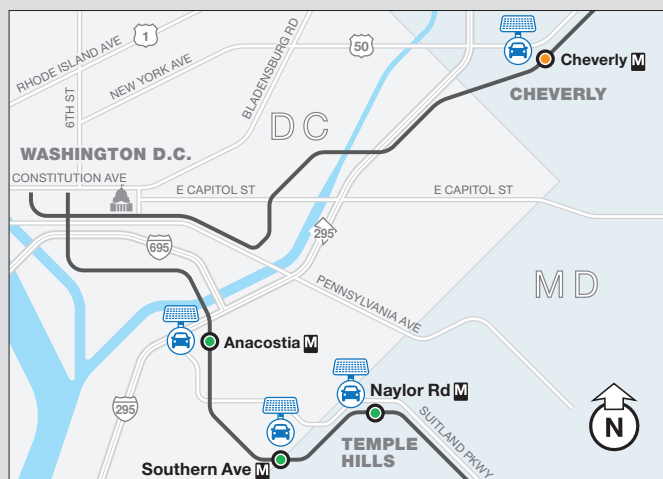
To provide a safe and secure customer experience, solar carports will feature improved light-emitting diode (LED) lighting, new security cameras and emergency call boxes. Covered parking will also provide shade and protection from extreme weather.

Timeline*



*estimated

Project Locations



Learn more

wmata.com/plansandprojects
202-637-1328

[@metroforward](https://www.facebook.com/metroforward)
[@wmata](https://www.facebook.com/wmata)



Updated July 2022. Information subject to change.

Frequently Asked Questions

PROJECT BACKGROUND

Why were these project sites selected?

Metro conducted an analysis of its real estate portfolio to identify sites that would attract development and maximize the benefits of solar carports to the region. The selected sites are all on Pepco's feeder system connected to the District of Columbia electrical grid, and offer optimal structural properties, sunlight exposure, and customer utilization.

What is the cost to Metro?

The solar carports will be installed at no cost to Metro. Customer experience improvements like security cameras, parking lot repaving and lighting are funded through Metro's capital improvement program. Visit wmata.com/capitalprogram to learn more.

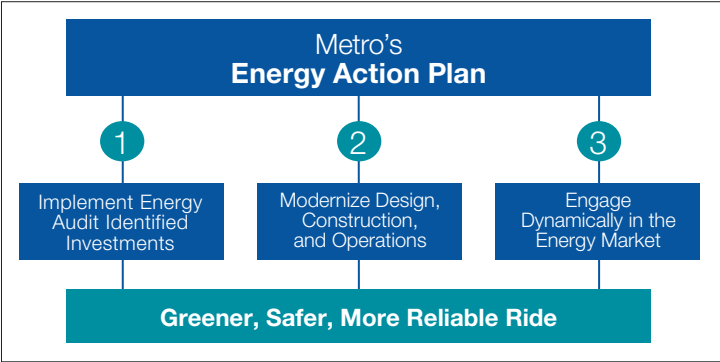
What is the timeline?

Construction is expected to be complete by 2023.

REGIONAL PARTNER

How will the project meet the region's sustainability goals?

As part of our Energy Action Plan, this project will advance Metro's sustainability vision.



How will the community benefit?

All electricity generated from the solar carports will be delivered to local residential and commercial customers. Customers will benefit from covered parking, enhanced lighting and other safety improvements.

CUSTOMER INFORMATION

Will there be parking or traffic changes at the construction sites?

Some parking will temporarily close at facilities under construction and traffic/pedestrian detours may be in place. Visit wmata.com/alerts to learn more about parking changes at impacted stations.

What are the hours of construction and will the work produce noise?

Construction is expected to occur weekdays in compliance with local noise and permit regulations. Customers and surrounding neighbors may hear normal construction sounds from machinery. Our goal is to complete the project with minimal disruption to the public.