

# Crystal City Metrorail Station

## East Entrance

WMATA Compact Public Hearing  
R21-01

July 13, 2021

ARLINGTON  
VIRGINIA



# Agenda

- Purpose of Public Hearing
- Proposed Changes to Metro Facilities
  - Project overview
  - Environmental impacts
- Public Comments
- Next Steps

Para recibir información sobre este proyecto, sírvase llamar a la línea de servicio al cliente de Metro al 202-637-1328.

ስለዚህ ፕሮጀክት ተጨማሪ መረጃ ለማግኘት እባክዎ ሜትሮ ደንበኛ አገልግሎት መስመር ይደውሉ 202-637-1328.

想要获取该项目的更多信息，请致电地铁客户服务热线 202-637-1328。

想要獲取有關此項目的其他信息，請致電地鐵客戶服務專線202-637-1328。

# Reference Materials

WMATA Compact Public Hearing Materials:

<https://www.wmata.com/initiatives/plans/crystal-city-second-entrance.cfm>

Arlington County Project Website:

[projects.arlingtonva.us/projects/crystal-city-metro-station-second-entrance/](https://projects.arlingtonva.us/projects/crystal-city-metro-station-second-entrance/)

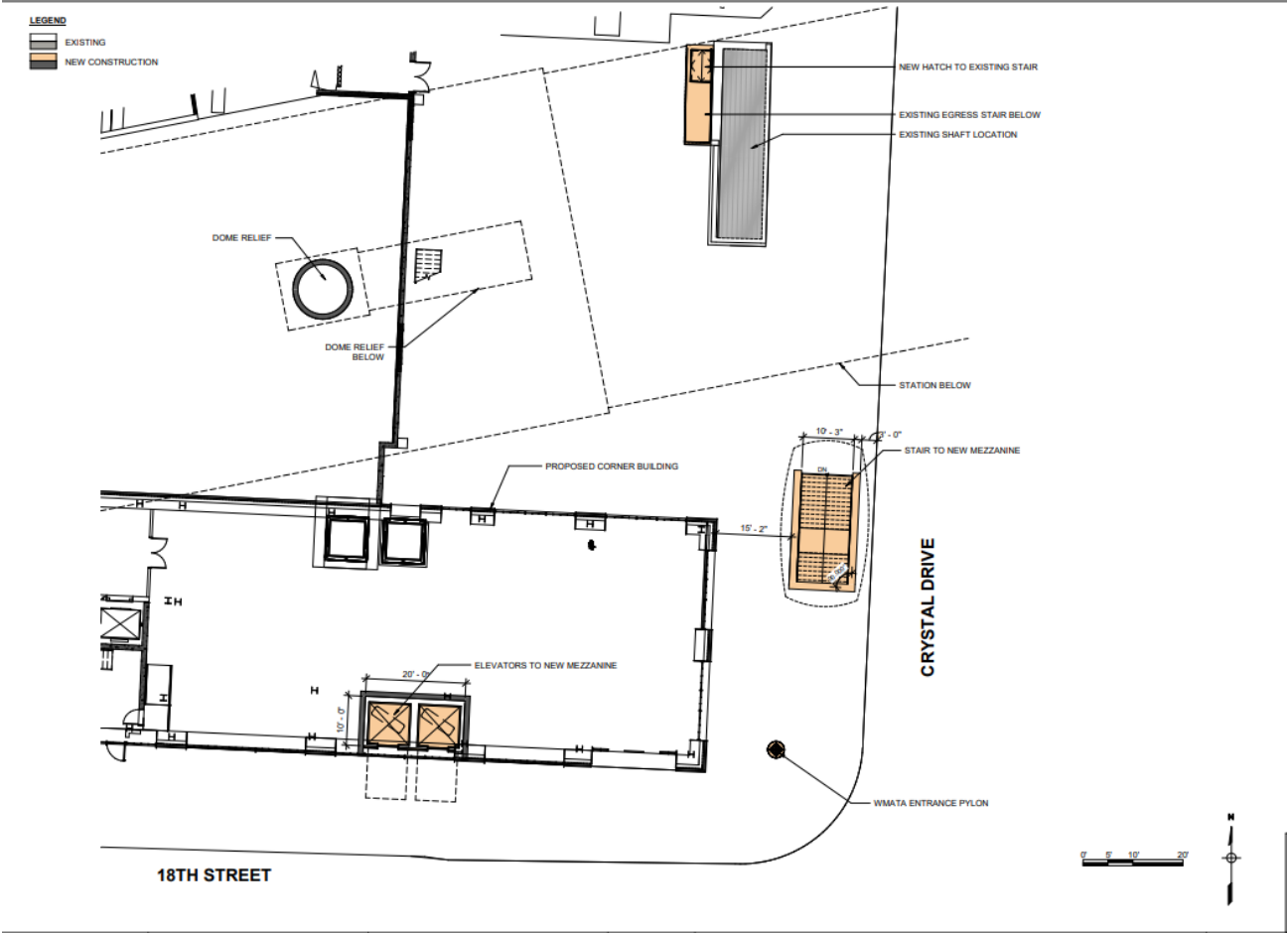
# Purpose of Hearing

- To obtain public input on a second (“east”) entrance to the Crystal City Metrorail Station, located at the corner of 18<sup>th</sup> Street South and Crystal Drive in Arlington, Virginia.

# Written Testimony

- Further testimony may be submitted and must be received by 5 p.m. on Friday, July 23rd.
- This testimony may be submitted online at [wmata.com/plansandprojects](http://wmata.com/plansandprojects)
- Or mailed to: Office of the Secretary, WMATA, 600 Fifth Street NW, Washington, D.C. 20001.

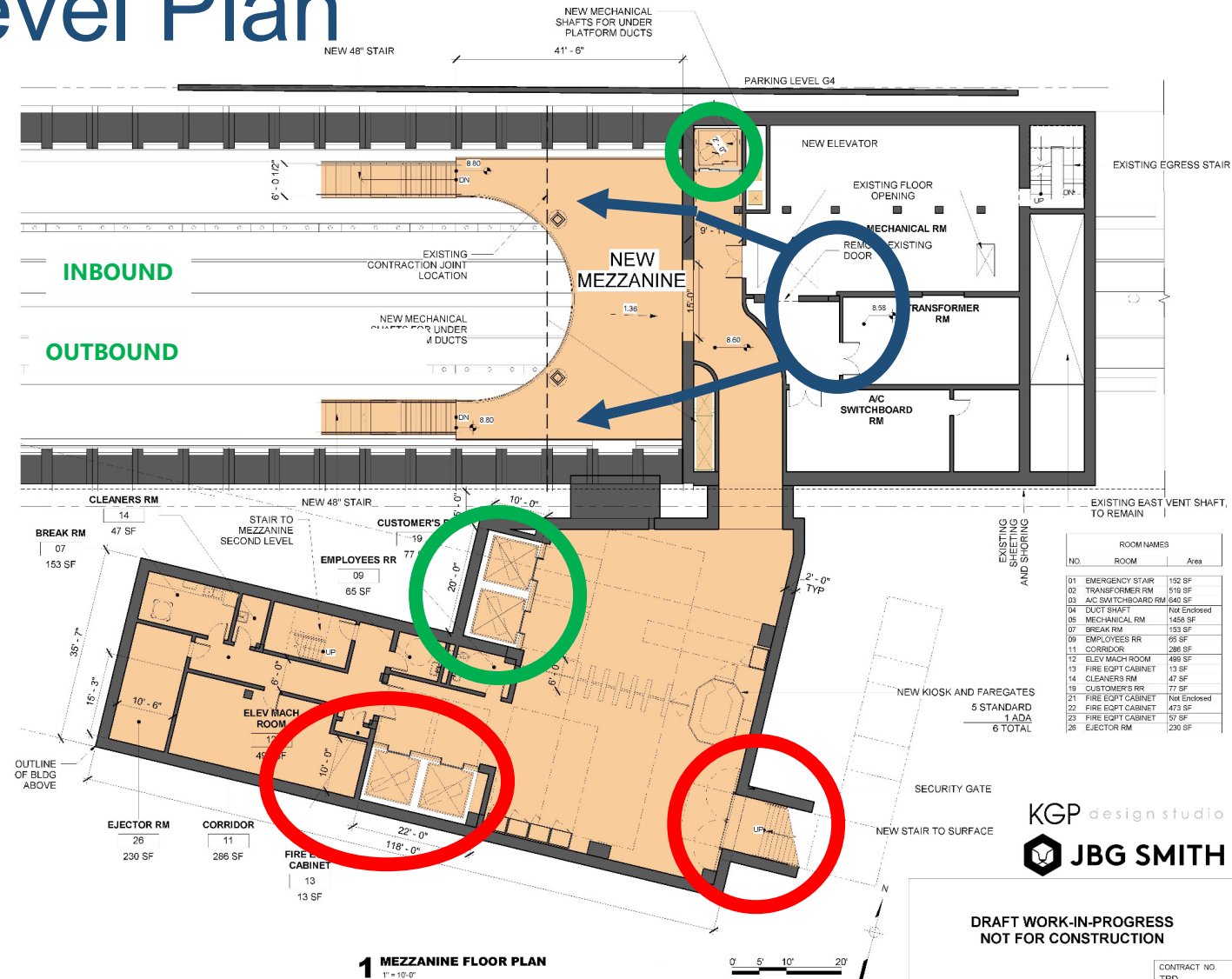
# Proposed Project East Entrance



# Proposed East Entrance: Mezzanine-Level Plan

## LEGEND

- Mezzanine
- Platform Elevators
- New Entrances





# Project Partners

ARLINGTON  
VIRGINIA



Federal Transit  
Administration





# Environmental Analysis

- An Environmental Evaluation for the new station has been completed and is provided as part of the Docket. Likely environmental impacts are summarized in the table below.

| Environmental Resource | Permanent Impacts | Construction-Related (Temporary) Impacts   | Minimization & Mitigation Efforts   |
|------------------------|-------------------|--|---|
| Transportation         | None              | Disruption to pedestrian and vehicular traffic; weekend station closures           | Maintenance of Traffic (MOT) plan to reroute surface traffic; Maintenance of Operations Plan (MOP) for train bypass   |
| Air Quality            | None              | Emissions from on-site diesel equipment and increased truck traffic; fugitive dust | “Good housekeeping” to wet dirt, rinse vehicles exiting site, provide street sweeping, and other dust minimization measures   |
| Noise                  | None              | Pile drilling; tunnel wall demolition  | Minimize nighttime work when noise levels would exceed allowable levels, implement noise control measures, and continually monitor noise levels to correct, as needed |

# Hearing procedures

- Public officials: 5 minutes each
- Private citizens: 3 minutes each
- Relinquishing of time by one speaker to another speaker is not allowed
- Call **855-925-2801** and enter code **8137**

# Written Comments

- Must be received by 5:00 p.m. on Friday, July 23, 2021
- Reference “Hearing 21-01” in the subject line

- **Online:** [wmata.com/planandprojects](https://wmata.com/planandprojects)

- **By mail:**

Office of the Secretary  
Washington Metropolitan Area Transit Authority  
600 Fifth Street NW  
Washington, DC 20001

# Next Steps

| Dates         | Milestone   |
|---------------|---|
| July 23, 2021 | Close of Public Comment Period  |
| August 2021   | Draft Staff Report posted on Metro's website for public comment                   |
| August 2021   | Close of Draft Staff Report Public Comment Period (10 days after website posting) |
| October 2021  | Presentation to WMATA Board of Directors for approval                             |

Thank you for  
your participation!

