

# Bladensburg Bus Garage Reconstruction Project

## Summer Community Engagement Meeting

June 23, 2022




**This meeting is being recorded**



## Meeting Etiquette

**Metro wants to hear from you. Here are a few guidelines to keep this meeting productive and to maintain respect for all participants:**

You will have an opportunity to ask questions following each section of the presentation

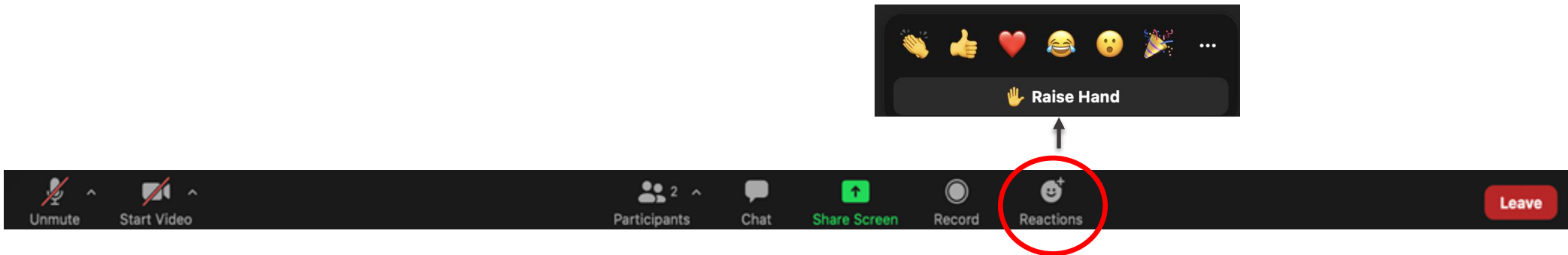
- To ensure we hear from as many community members as possible, please adhere to the Q&A protocol:
  -  Request to speak by typing your name in the chat
  -  Type questions directly into the chat
  -  Use the raise hand feature in Zoom
- When speaking:
  - Maintain a civil tone
  - Be mindful of time so that your fellow community members can share their feedback

**Anyone in violation of the meeting etiquette guidelines will be muted for the duration of the meeting.**

## Raise Hand Feature

To ensure we get to as many people as possible, we ask that you use the raise hand feature.

- You can find this feature in your Zoom toolbar in the “Reactions” section. We will call on those to speak in the order they appear.
- To raise your hand while dialing in, press \*9



## Agenda

- Introductions
- Project Overview and Updates
- Construction Updates
- Excavation Activities
- Art in Transit
- A Look Ahead



# Introductions

Bladensburg Bus Garage Reconstruction Project

## Project Team

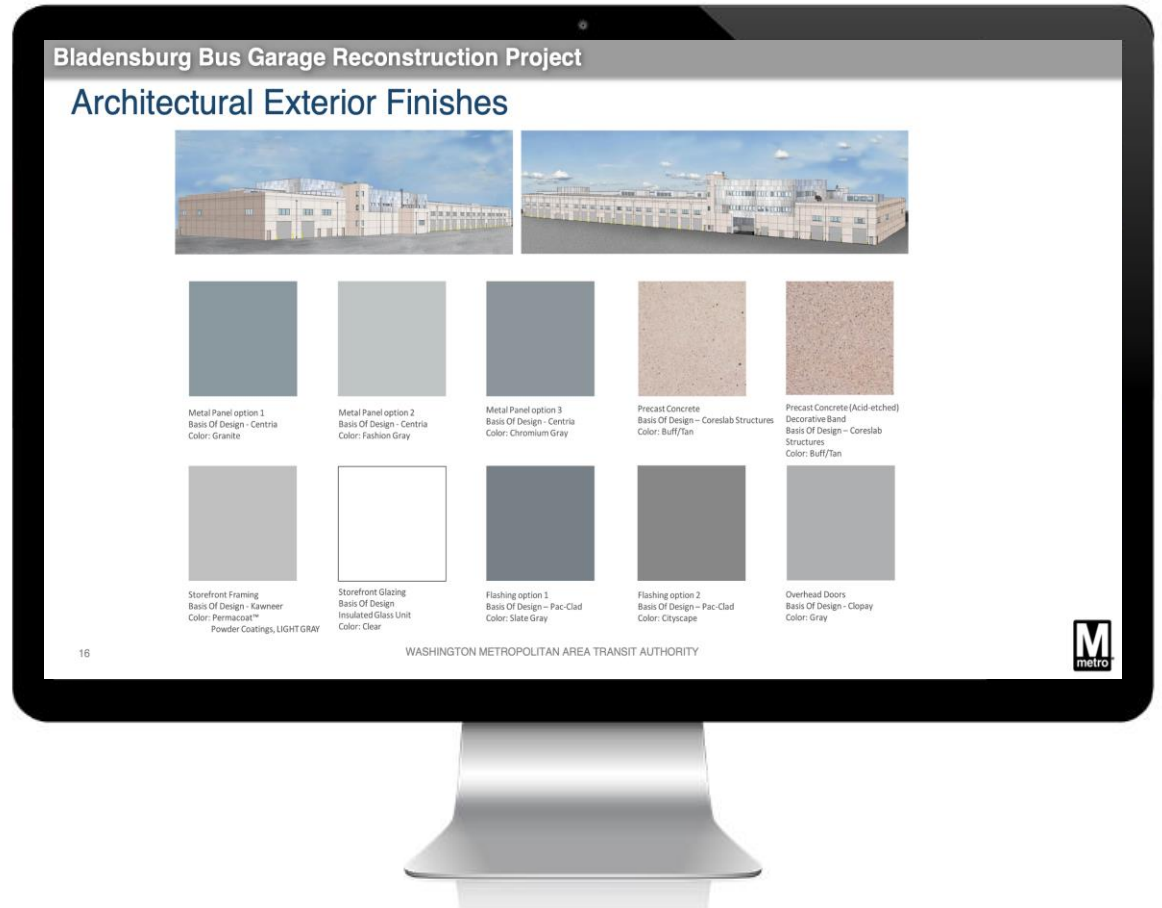
- ❑ Diana Levy, Director, Capital Delivery
- ❑ Shaun Pratt, Project Manager
- ❑ Jameelah Muhammad Ingram, Deputy Project Manager
- ❑ Daniel Goucher, Project Manager (Hensel Phelps)
- ❑ Laurent Odde, Art in Transit Program Manager
- ❑ Jim Ashe, Environmental Coordinator

# Project Overview and Updates

Bladensburg Bus Garage Reconstruction Project

## Review of Last Meeting

- The previous virtual community meeting was held on March 22, 2022.
- The project team shared an overview of information including viewing new garage renderings, progress on Phase 1 demolition/construction and Art in Transit temporary display developments. Questions were answered from the community.
- Presentations and recordings of community meetings are available in the "Project Updates" section of the project website [wmata.com/BladensburgBusGarage](http://wmata.com/BladensburgBusGarage)







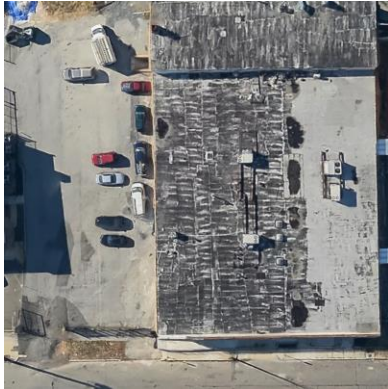
## Best Practices for Cleanliness and Noise Control

- ✓ Required daily work area clean up
- ✓ Stationed waste receptacles & dumpsters
- ✓ Prevention of flying debris in inclement weather
- ✓ Installation of Department of Energy & Environment (DOEE)-approved water runoff controls
- ✓ Wheel washes for construction vehicles
- ✓ Weekly trash pick up on project perimeter
- ✓ Onsite street sweeper for construction debris
- ✓ Typical weekday crew hours: 7 am – 7 pm
- ✓ Limited hours for oversized load deliveries: 9:30 am – 3 pm

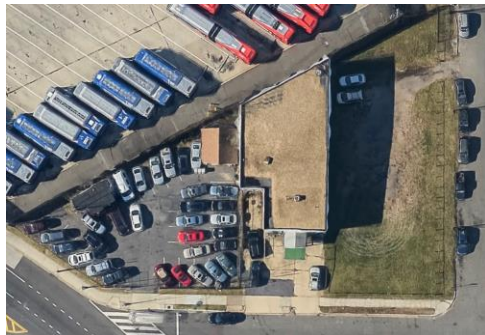


## Construction Traffic Flow and Contractor Parking

Two areas designated for contractor personal vehicle parking



2122 24th PI NE



Properties on 28th St NE



# Any Questions?

## There are three ways to submit your questions



Request to speak by typing your name in the chat



Type questions directly into the chat



Use the raise hand feature in Zoom

# Construction Updates

Bladensburg Bus Garage Reconstruction Project

## Design Update

### Phase 1 – Maintenance Facility

- Issued For Construction (IFC) Under final review

### Phase 2 – Employee Parking

- Issued For Construction (IFC) Under final review

### Phase 3 – Remaining Bus Parking

- Issued For Construction (IFC) Complete

# Bladensburg Bus Garage Reconstruction Project



4/29/2022

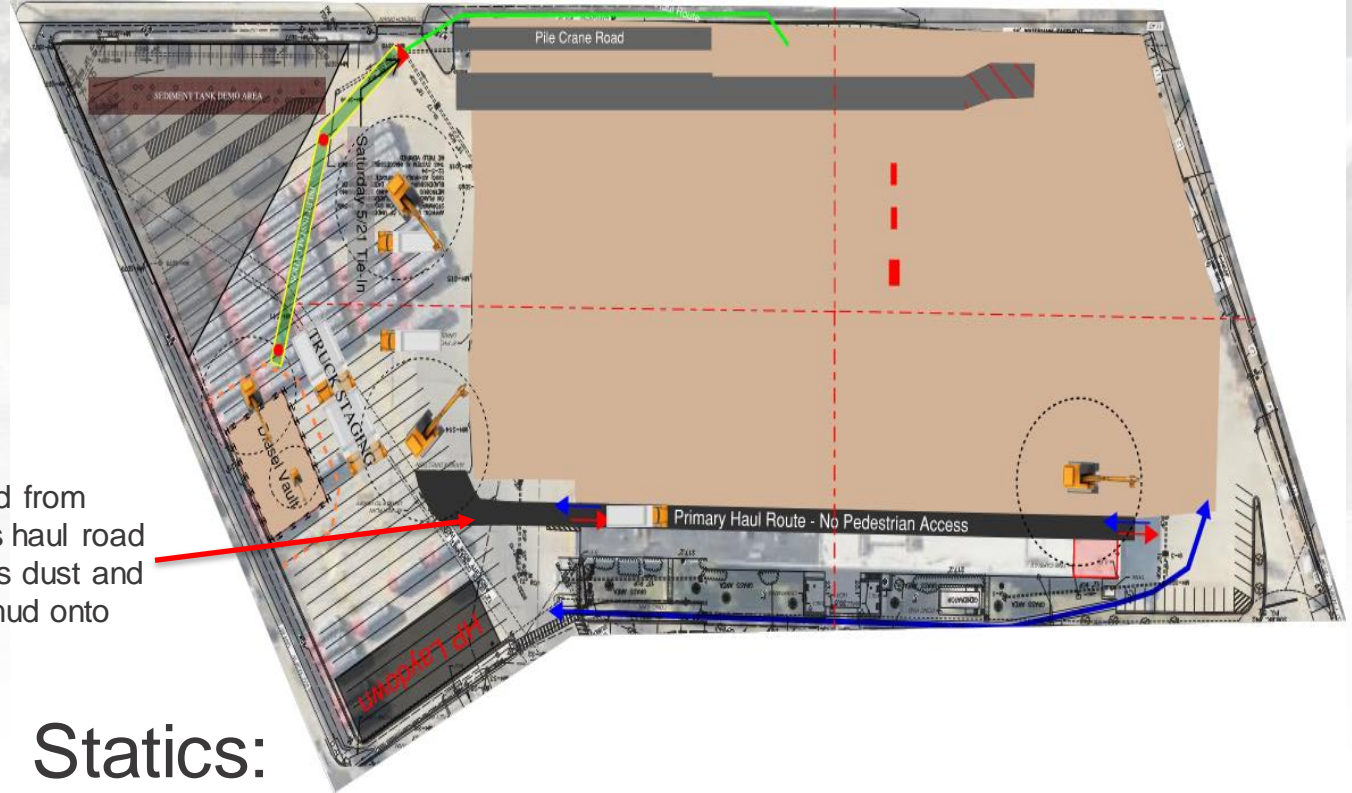


5/21/2022



5/25/2022

## Phase 1 Construction – Progress Mass Grading



Pavement reserved from demolition used as haul road for trucks. Reduces dust and controls tracking mud onto public roads.

Statics:  
28,000 cubic yards of soil exported  
13,000 cubic yards remaining

# Bladensburg Bus Garage Reconstruction Project



4/28/2022



5/5/2022



5/23/2022

Statics:  
(30) 30'-0" Piles driven  
~600 pieces of lagging (2"x10"  
Timber) installed  
18'-0" below grade

## Phase 1 Construction – Progress

### Fuel Vault





## Phase 1 Construction – New Activities

### June 2022

- Start paving removal SW corner
- Start demolition of existing sandfilter
- Form, reinforce & place concrete in fuel vault

### July 2022

- Form, reinforce & place concrete retaining wall SW corner

### August 2022

- Obtain building permit

### September 2022

- Drive piles for rainwater harvesting tank
- Install lagging and excavation of rainwater harvesting tank



# Any Questions?

## There are three ways to submit your questions



Request to speak by typing your name in the chat



Type questions directly into the chat

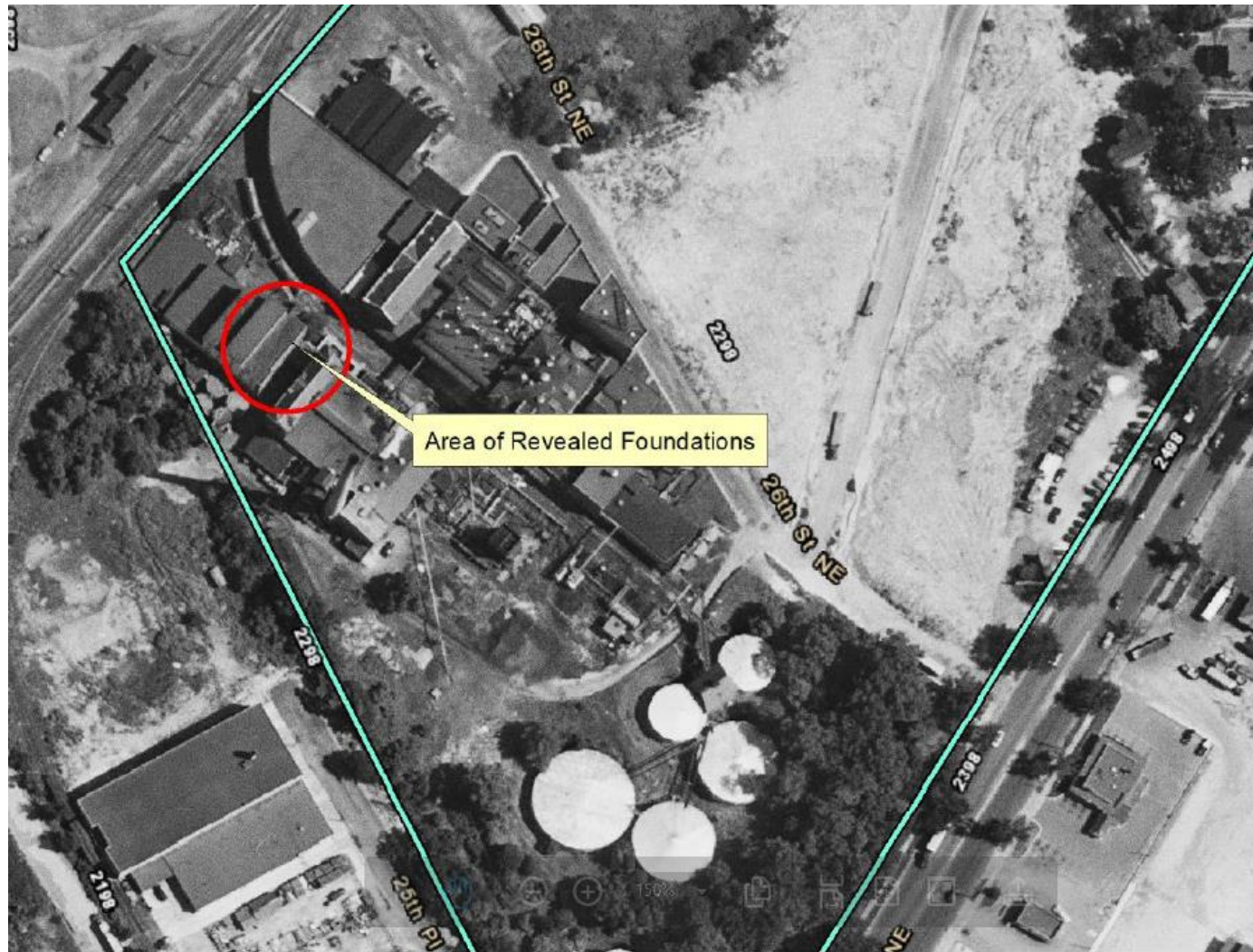


Use the raise hand feature in Zoom

# Excavation Activities

Bladensburg Unanticipated Discovery

# Aerial Photo (1951)



# Foundation Photograph



**Figure 2. Profile of the Fleischmann's Yeast Factory Brick and Mortar Foundation Facing Northeast.**

# Foundation Photograph



**Figure 3. In Situ Brick and Mortar Foundation.**

## Summary of Excavation Activities

- During excavation (Mar 31), masonry foundation was exposed
- Historic Preservation Office (HPO) was notified of the discovery (April 1)
- After review, determined to not require additional review (April 4)
- Federal Transit Administration (FTA) was notified
- Documentation provided to HPO and FTA

## Underground Storage Tanks (USTs)

- During excavation activities, Metro's contractor uncovered remnants of one or more unidentified USTs
- DOEE was notified
- DOEE has asked for a Comprehensive Site Assessment, under its UST regulations
- Contaminated soil is segregated and will be sent to a licensed disposal facility
- Contaminated water is placed in an onsite storage tank for offsite treatment



# Any Questions?

## There are three ways to submit your questions



Request to speak by typing your name in the chat



Type questions directly into the chat



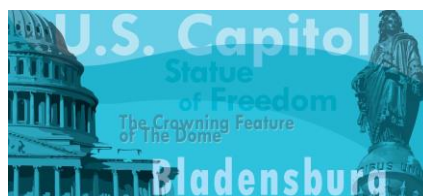
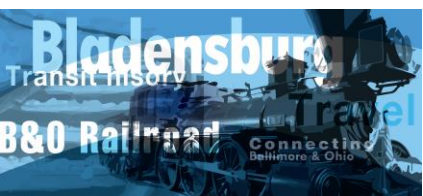
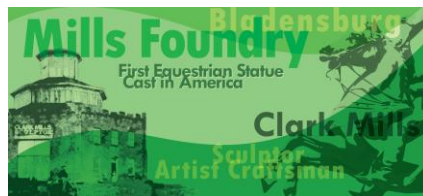
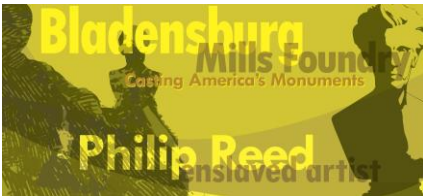
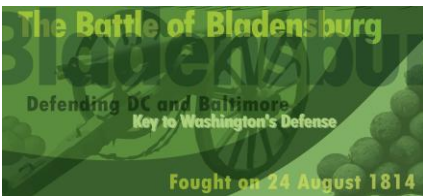
Use the raise hand feature in Zoom

# Art in Transit

Bladensburg Bus Garage Reconstruction Project

## AIT Temporary Display Update

- Graphics for temporary perimeter fencing:
  - Art in Transit staff working with WMATA Procurement (PRMNT)
  - PRMNT negotiating with vendor ahead of finalizing contract
  - Once contract is finalized, production and installation of banners planned within 30 days



# Any Questions?

## There are three ways to submit your questions



Request to speak by typing your name in the chat



Type questions directly into the chat



Use the raise hand feature in Zoom

# A Look Ahead: What to Expect in the Next Quarter

Bladensburg Bus Garage Reconstruction Project

## Next Steps for Project

### July 2022 (planned)

- Building permit coordination
- Demo existing stormwater lines and manholes
- Demo and remove underground stormwater detention tank
- Remove legacy foundations
- Grading for new foundations

### August 2022 (planned)

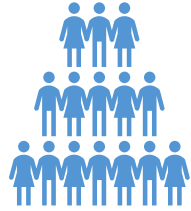
- Obtain building permit
- Continue demo of stormwater lines & manholes
- Continue grading for new foundations
- Stormwater management (SWM) permit coordination

### September 2022 (planned)

- Continue grading for new foundations
- Obtain SWM permit
- Install auger cast piles for new foundation
- Install piles for rainwater harvesting tank
- Continue building material fabrication and delivery

# Community Engagement and Outreach

Three ways to stay informed



Quarterly community meetings:  
Next meeting  
Fall 2022



Project website  
[wmata.com/BladensburgBusGarage](http://wmata.com/BladensburgBusGarage)



Project communications team  
[BladensburgBusGarage@wmata.com](mailto:BladensburgBusGarage@wmata.com)

Sign-up for project updates  
<https://bit.ly/BladensburgBusRegistration>

# Any Questions?

## There are three ways to submit your questions



Request to speak by typing your name in the chat



Type questions directly into the chat



Use the raise hand feature in Zoom



# Thank You

Bladensburg Bus Garage Reconstruction Project