

Bladensburg Bus Garage

Reconstruction Project

Summer Community Engagement Meeting



This meeting is being recorded



Meeting Etiquette: In-Person

Help keep this meeting productive and respectful

Please adhere to the Q&A protocol:



Raise your hand to ask a question



Speak clearly into the microphone



Allow presenters, and those speaking, to finish

When speaking:



Maintain a civil tone

Be mindful of time

Meeting Etiquette: Virtual

Help keep this meeting productive and respectful

Please adhere to the Q&A protocol:

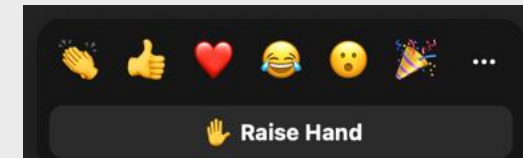


Request to speak by typing your name in the chat

Type questions directly into the chat

Use the raise hand feature in Zoom

To raise your hand while dialing in, **press *9**



Leave

When speaking:



Maintain a civil tone

Be mindful of time

Agenda – Community Update Meeting



Introductions



Project Overview and Updates



Construction Updates



A Look Ahead



Introductions

Bladensburg Bus Garage Reconstruction Project

Project Team



Maya Nino
Senior Capital Program
Manager, Capital Delivery



Shaun Pratt
Project Manager



**Jameelah
Muhammad Ingram**
Commercial Manager



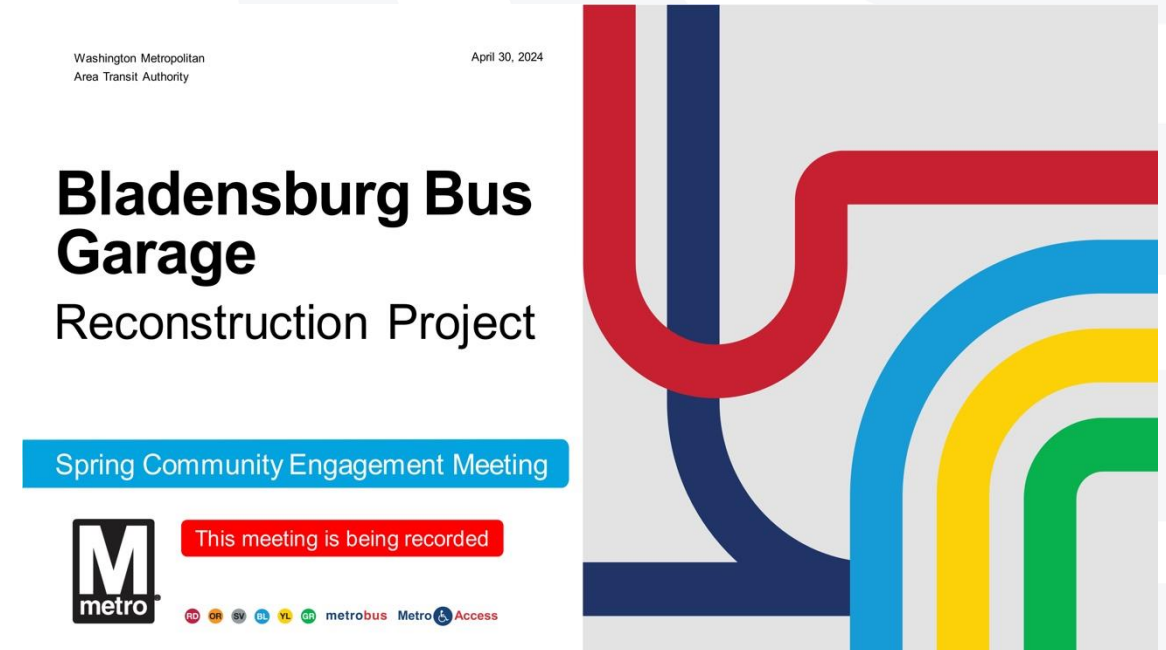
Daniel Goucher
Project Manager
(Hensel Phelps)

Project Overview and Updates

Bladensburg Bus Garage Reconstruction Project

Review of Last Meeting

- Spring community meeting: April 30, 2024
- Topics discussed included:
 - Project Overview and Updates
 - Bladensburg Bus Garage Paint Booth
 - Construction Progress and Schedule
- Questions from the community were addressed
- All community meeting resources available in the "Project Updates" section of the project webpage:
wmata.com/BladensburgBusGarage

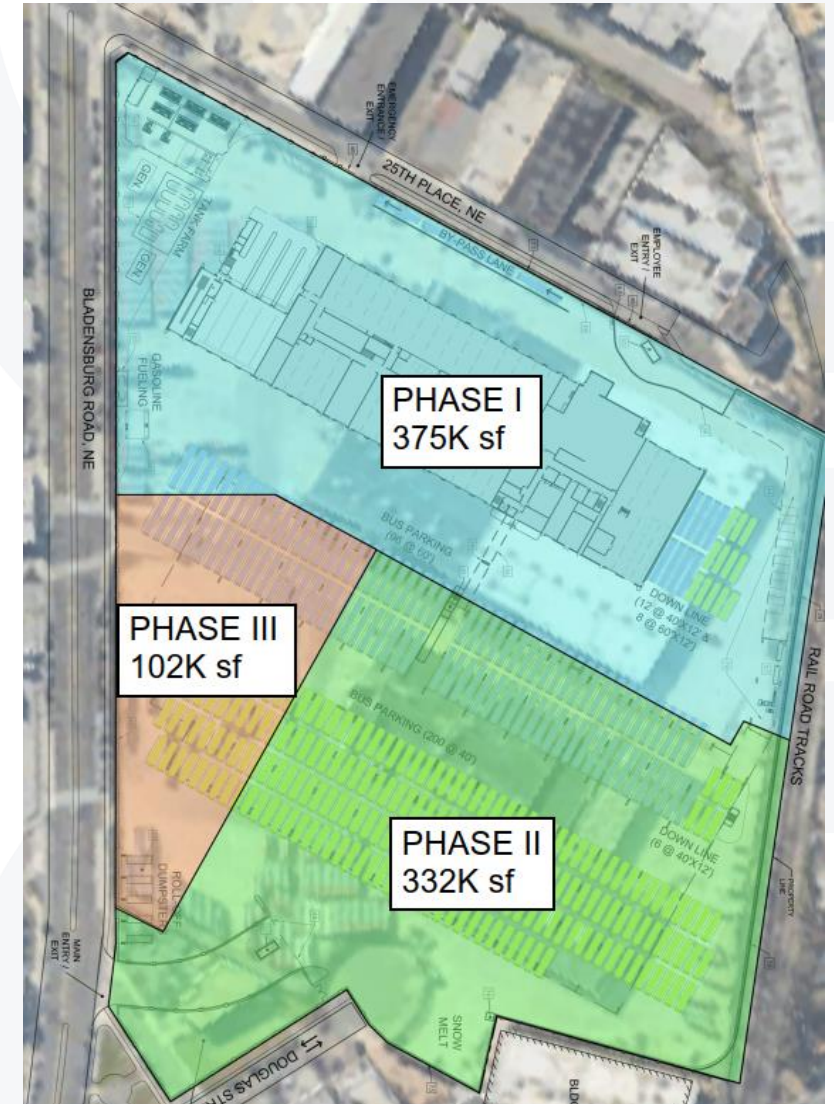


Project Overview

- Reconstruction of site includes:
 - New maintenance facility
 - Parking for 300 buses
 - Charging infrastructure and equipment to support battery-electric buses (BEB)
 - Parking structure for 420 employees
 - Reduced from 450 to 420 based on occupancy
- Project Schedule:



*Schedule updates currently in process



Best Practices for Cleanliness & Noise Control During Construction

Required daily work area clean up

Stationed waste receptacles

Prevention of flying debris in inclement weather

Department of Energy & Environment (DOEE)
approved water runoff controls

Wash construction vehicle wheels

Onsite street sweeper

Weekly trash pick-up

Typical weekday crew hours: 7 a.m. – 7 p.m.

Limited hours for oversized deliveries: 9:30 a.m. – 3 p.m.

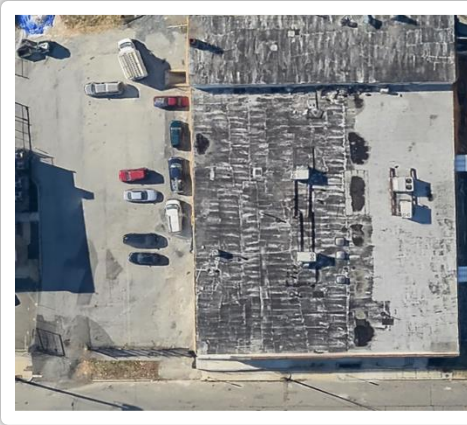


Construction Traffic Flow and Contractor Parking

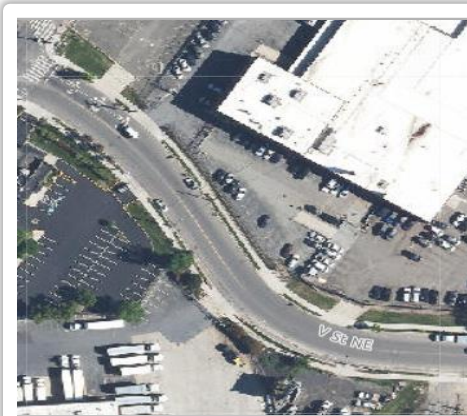
- Reduced parking footprint
- Designated areas for contractor personal vehicle parking



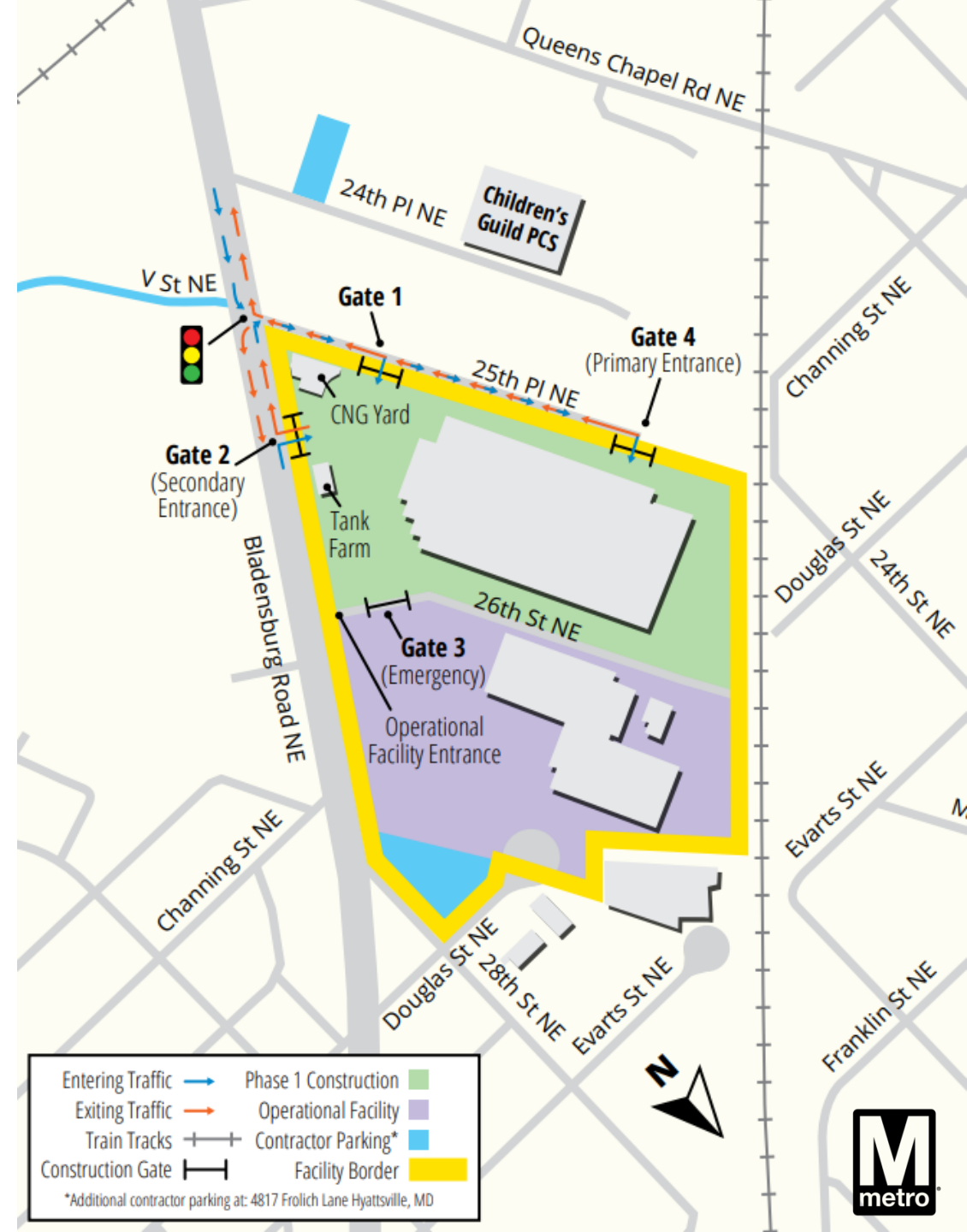
Properties on 28th St NE



2122 24th PI NE



V St NE



Agency Collaboration & Permitting Status

Agency	Status
Federal Transit Administration (FTA)	Categorical exclusion granted (summer 2020)
District Department of Transportation (DDOT) Infrastructure Project Management Administration (IPMA)	Received approval at 8/25/22 Public Space Committee Hearing (summer 2022) Continued Douglas St. NE cul-de-sac closure process
District of Columbia Historic Preservation Office	Programmatic Agreement (winter 2020)
District of Columbia Department of Energy and Environment (DOEE)	Cleared for Phase 1 demolition (fall 2021) Phase 1 stormwater management drawings approved (winter 2022)
DC Water	Discussed Cycle 3 review comments for Phase 2 and Phase 3 plans Coordination taking place
Pepco	Coordination taking place
Washington Gas	Completed pre-construction meeting and field walk for new gas line for CNG Yard Coordination taking place
Department of Buildings (DOB)	Received building foundation permit for Phase 1 (summer 2022) Received new building permit for Phase 1 (spring 2023) Coordinated cut and cap work for raze of acquired properties

*Yellow highlight indicates new since last meeting

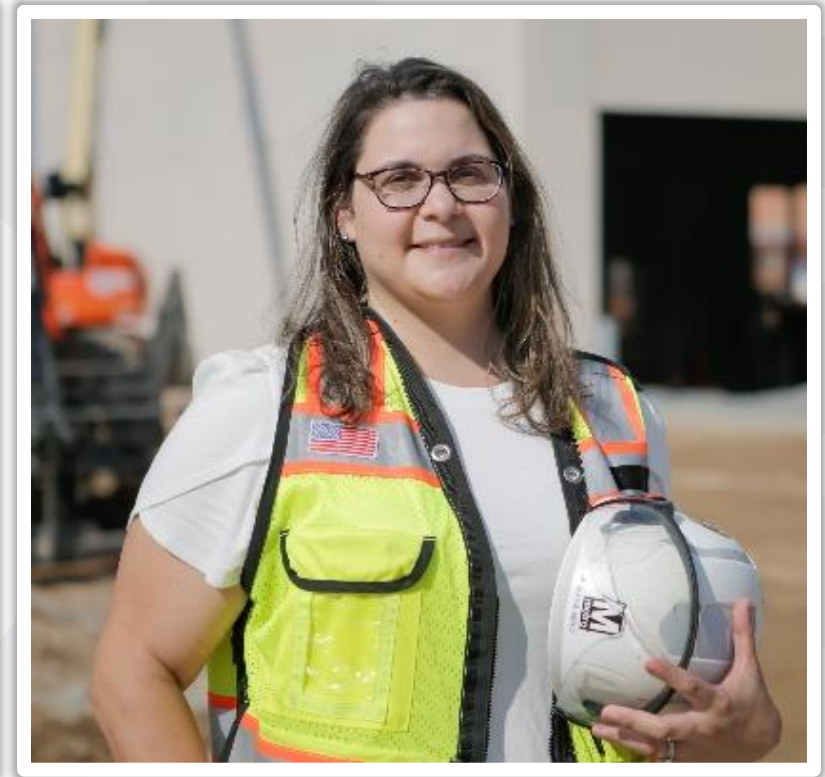
Community Engagement



Hosted Inaugural Metro Fest



Released Quarterly Newsletter



Featured People Behind the Project

Maya Nino
Senior Capital Program Manager



Upcoming Community Engagement



Metro Transit Police Department's
Annual Back To School Event

Q&A Session



In-person

- Raise your hand if you'd like to ask a question



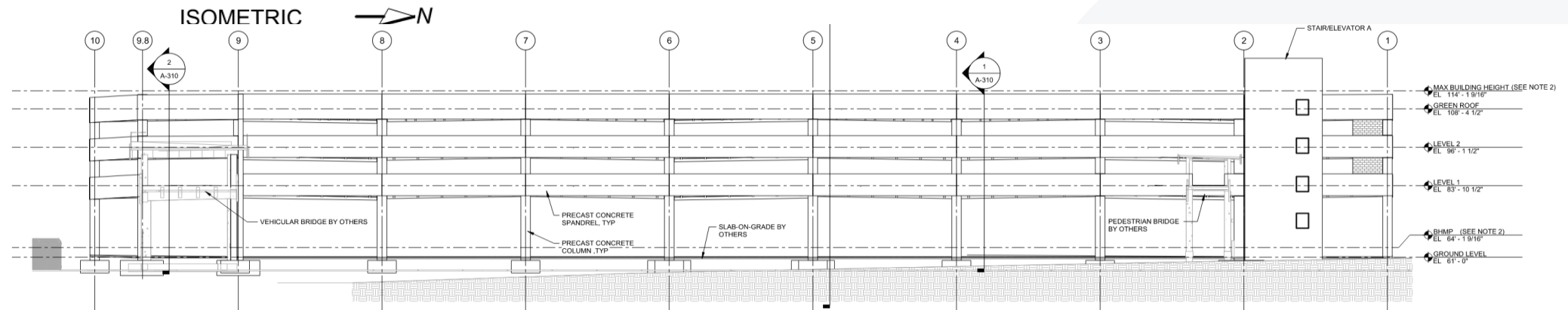
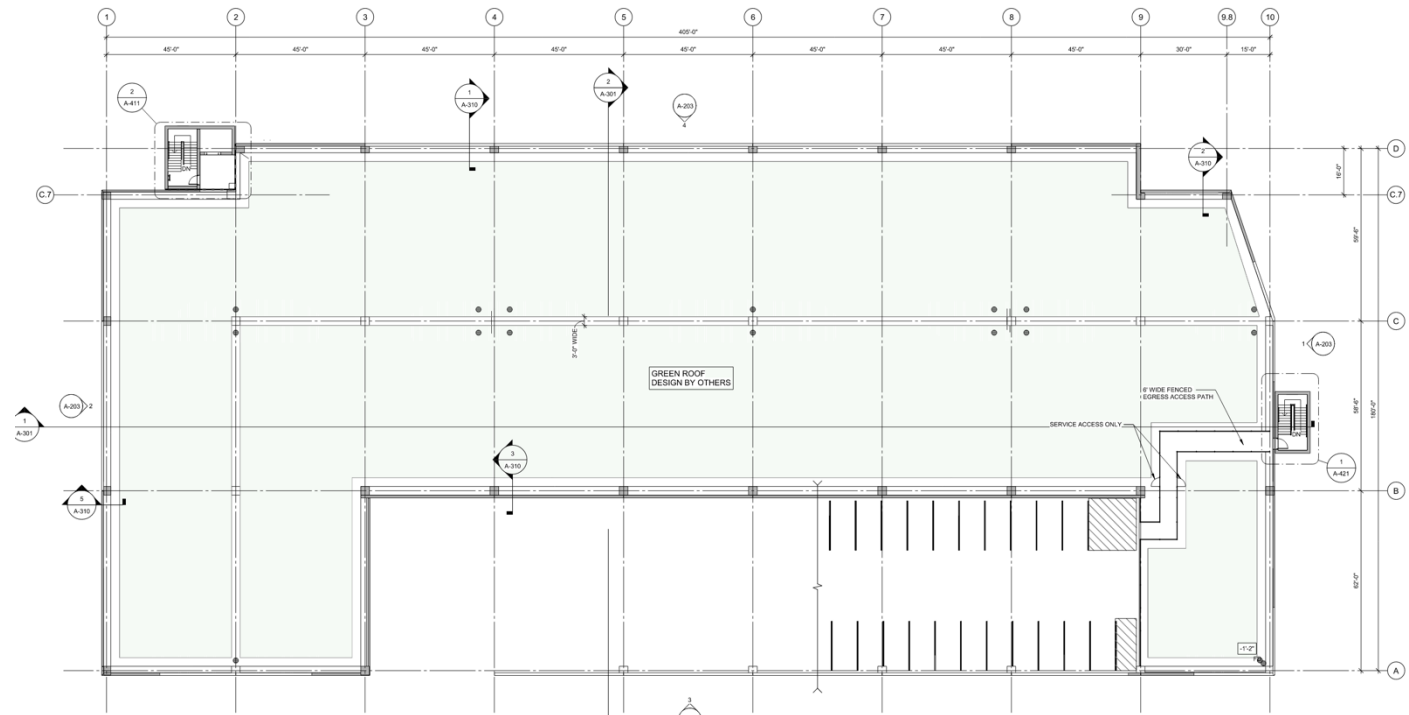
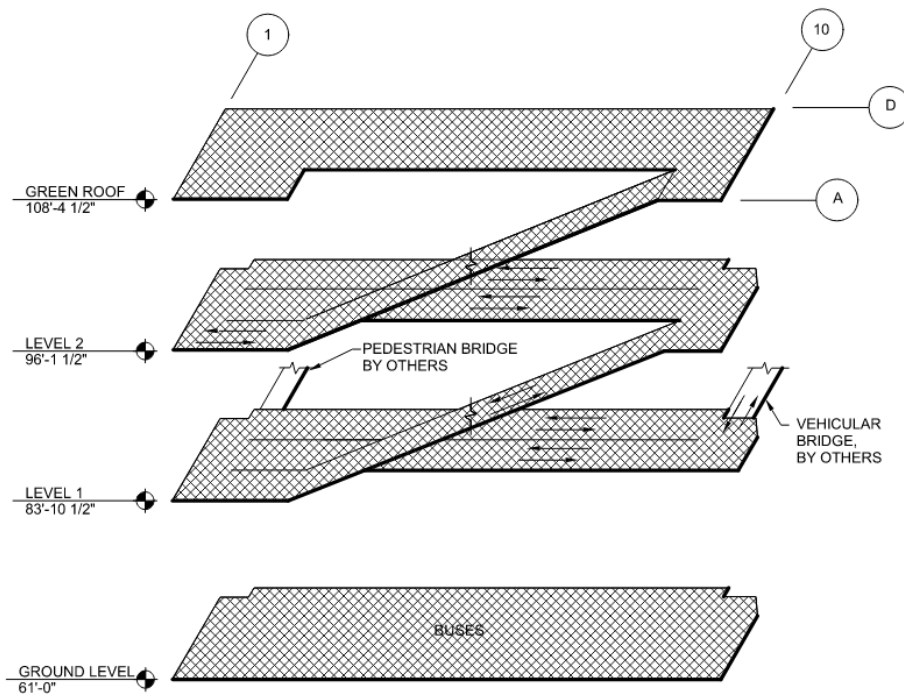
Virtual

- Type comments directly into the chat
- Raise your hand if you'd like to ask a question

Building Feature Review & Construction Updates

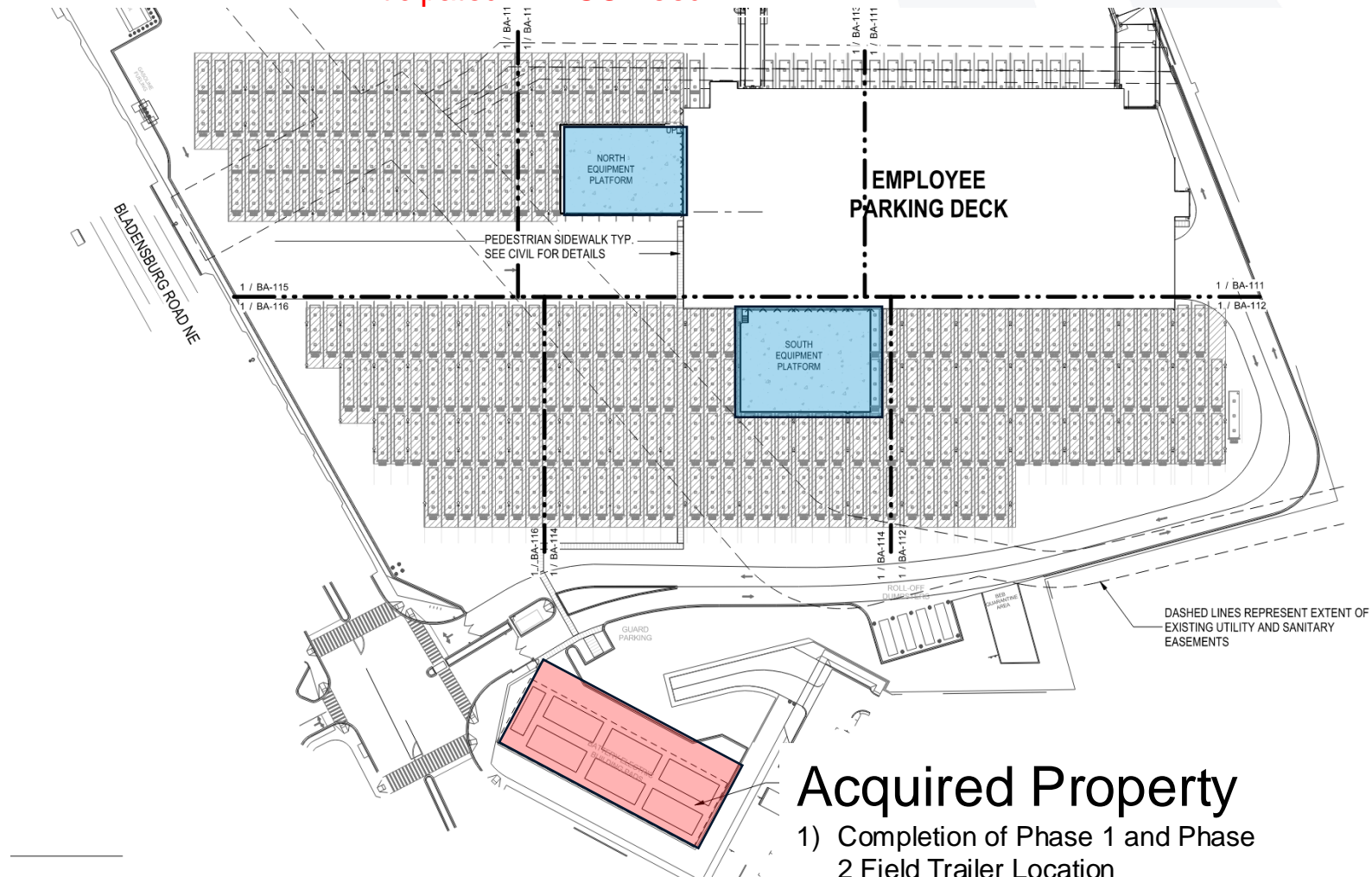
Bladensburg Bus Garage Reconstruction Project

Building Feature – Parking Garage Redesign



Building Feature – Battery Electric Buses (BEB)

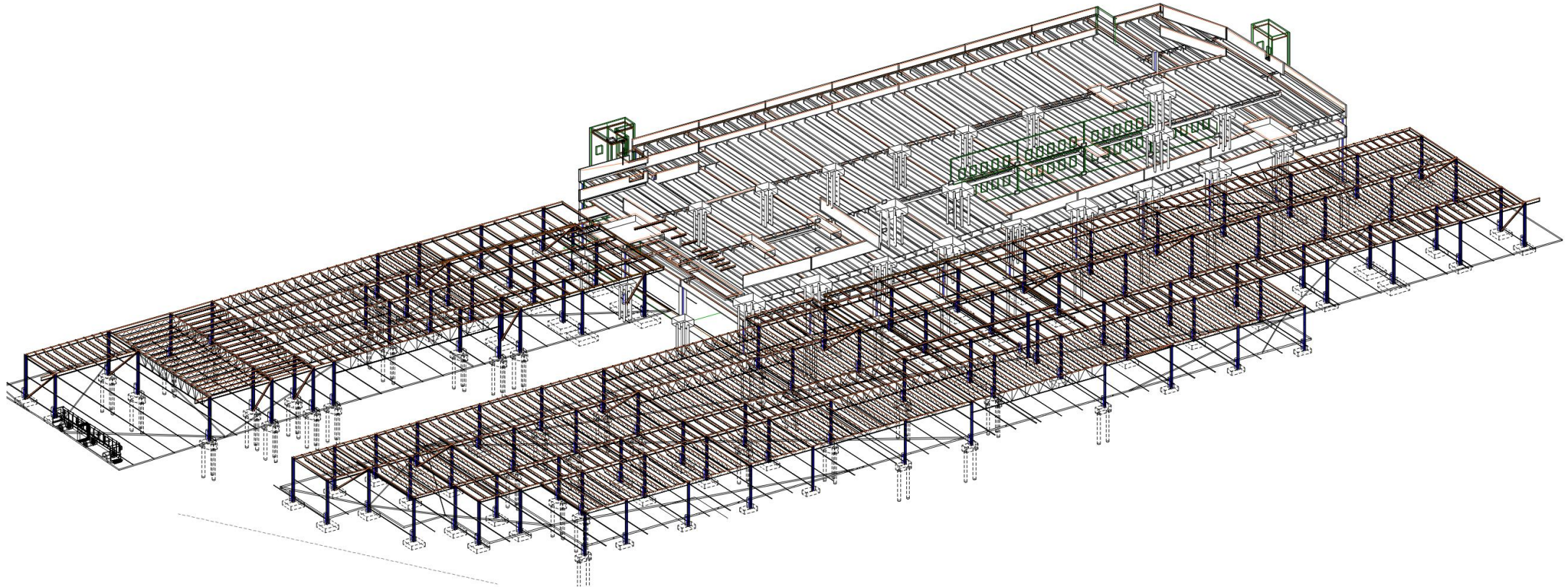
Anticipated PEPCO Feed



Acquired Property

- 1) Completion of Phase 1 and Phase 2 Field Trailer Location
- 2) Final configuration - (6) 2MW Generators

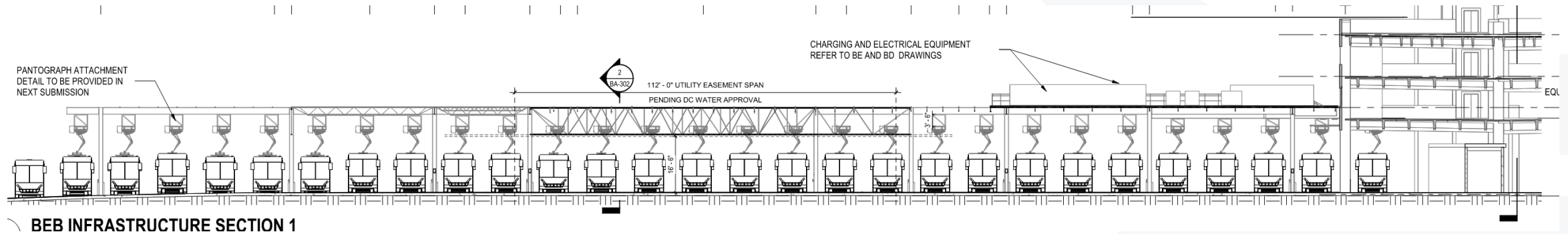
Building Feature – Battery Electric Buses (BEB) 3D Model



W - ISOMETRIC

ISOMETRIC VIEW IS FOR GENERAL REFERENCE ONLY AND SHALL NOT BE USED FOR CONSTRUCTION, BIDDING, OR ESTIMATING, ETC

Building Feature – Battery Electric Buses (BEB) Elevation





Phase 1 Construction – Progress » Exterior Acquired Property Demo



Building Demo in Progress



Sorting & Haul Out of Demo Material



Temp. Condition for Trailers & Parking

Phase 1 Construction – Progress » Exterior Personal Owned Vehicle (POV) Ramp



Abutment Ramp In-Progress



Ramp Foundations In-Progress



Ramp Foundations In-Progress

Phase 1 Construction – Progress » Exterior Site Paving



Site prep for concrete paving



Reinforcement & formwork concrete paving



Concrete finishing

Phase 1 Construction – Progress » Interior Vehicle Wash



Vehicle Wash Dryer Install

Phase 1 Construction – Progress » Interior Vehicle Lifts



Vehicle Lift Chasis Wash Area



Vehicle Lift Paint & Prep Area

Phase 1 Construction – Progress » Interior Paint Booth



Paint Booth Progress



Paint Booth Progress

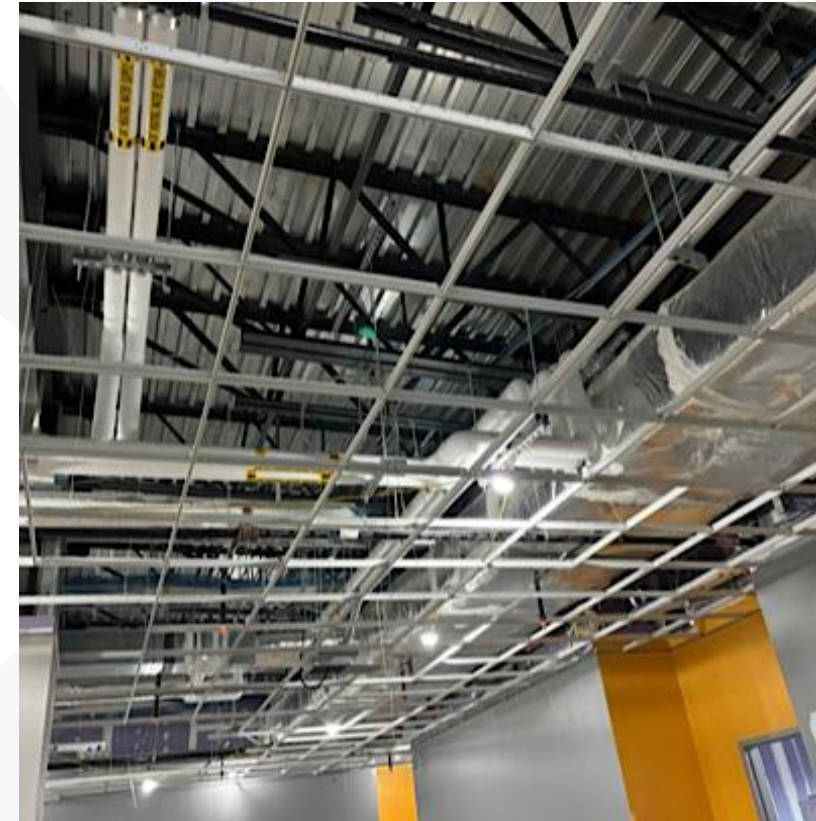
Phase 1 Construction – Progress » Interior Mezz. Finishes



Interior 1st Coat Mezz. Level



Ceiling Grid Install



Ceiling Grid Install Progress

Phase 1 Construction – Progress » Interior Elevator



Elevator Platform Install



Elevator Rails
and Temp Hoisting Cables

Phase 1 Construction – Progress » Interior Boiler Room



Boiler Room Hot Water Loops



Boiler Room Completed Insulation

Q&A Session



In-person

- Raise your hand if you'd like to ask a question



Virtual

- Type comments directly into the chat
- Raise your hand if you'd like to ask a question

A Look Ahead: What to Expect in the Next Quarter

Bladensburg Bus Garage Reconstruction Project

Next Steps for the Project

September 2024 (planned)

- Continue elevator cab installation in building
- Continue pulling of wire and interior finishes in building
- Battery charging room work
- Continue bus lift installation
- Overhead crane installation
- Continue site grading, site preparation, curbs and paving
- Precast deck installation for north parking ramp

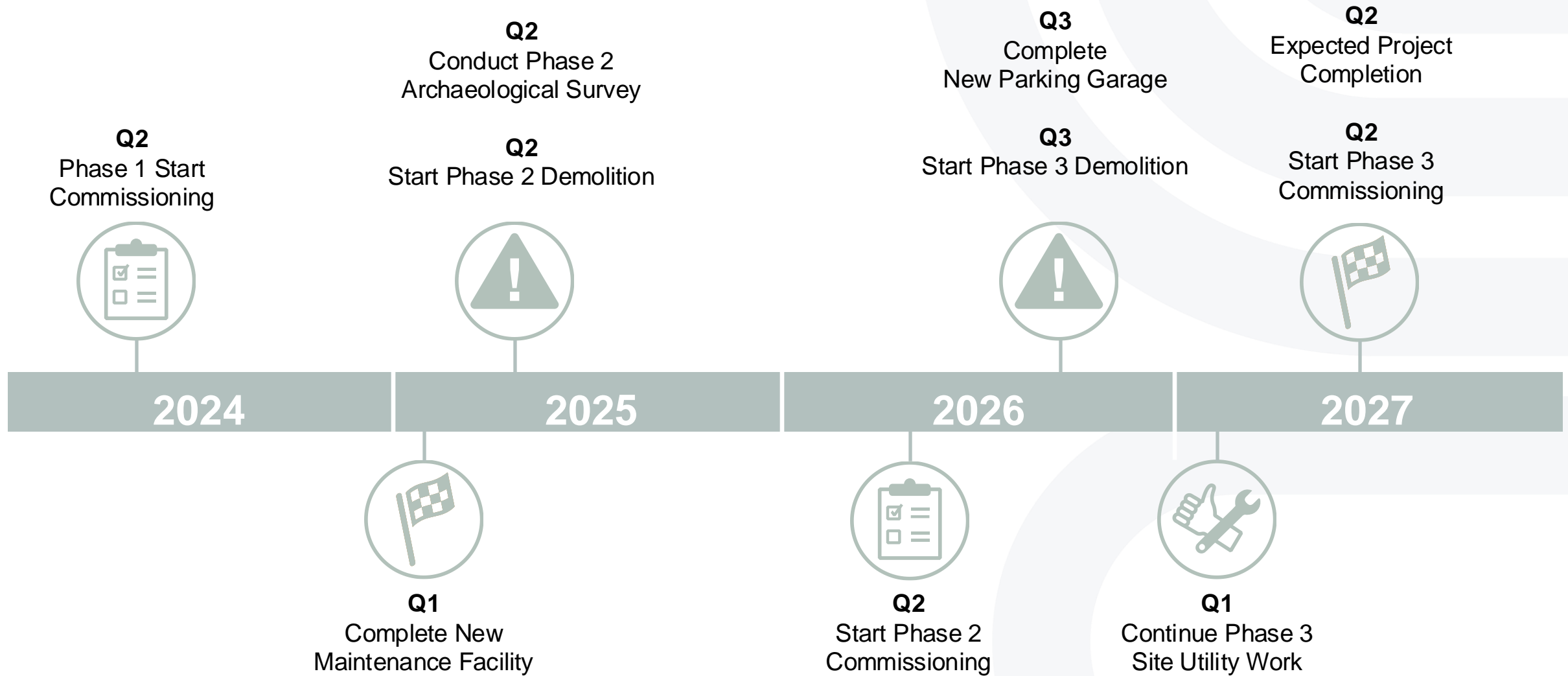
October 2024 (planned)

- Complete elevator
- Pulling of wire nears completion and interior finishes continue in building
- Millwork, flooring, and tile underway in offices and lockers
- Continue site grading, site preparation, curbs and paving
- Terracotta panel and column work for north parking ramp
- Commissioning (Cx) for cooling tower, boilers, roof top units, fire pump, and lube system

November 2024 (planned)

- Continue building finishes
- Site paving continues and site finishes begin
- Continue north parking ramp work
- Continue Cx with roof top units, main electrical gear, fire system testing, lube system, and elevator performance

Schedule



How to Follow-Up on the Project



Sign Up For Project Updates

*BladensburgBusGarage@
wmata.com*



Project Website

[wmata.com/
BladensburgBusGarage](https://wmata.com/BladensburgBusGarage)



Quarterly Community Meetings

Next meeting:
Fall 2024
(Virtual Meeting)

Follow us on:



@MetroForward



@wmata



@MetroForward

Q&A Session



In-person

- Raise your hand if you'd like to ask a question



Virtual

- Type comments directly into the chat
- Raise your hand if you'd like to ask a question

Thank you!

Washington Metropolitan
Area Transit Authority