

Bladensburg Bus Garage Reconstruction Project

Winter Community Engagement Meeting

January 24, 2023

This meeting is being recorded



Meeting Etiquette (In Person)

Metro wants to hear from you. Here are a few guidelines to keep this meeting productive and to maintain respect for all participants:

- You will have an opportunity to ask questions following each section of the presentation
- To ensure we hear from as many community members as possible, please adhere to the Q&A protocol:



Raise your hand if you'd like to ask a question



Speak clearly into the microphone






Allow presenters, and those speaking, to finish

- When speaking:
 - Maintain a civil tone
 - Be mindful of time so that your fellow community members can share their feedback

Anyone in violation of the meeting etiquette guidelines will be muted for the duration of the meeting.

Meeting Etiquette (Virtual)

Metro wants to hear from you. Here are a few guidelines to keep this meeting productive and to maintain respect for all participants:

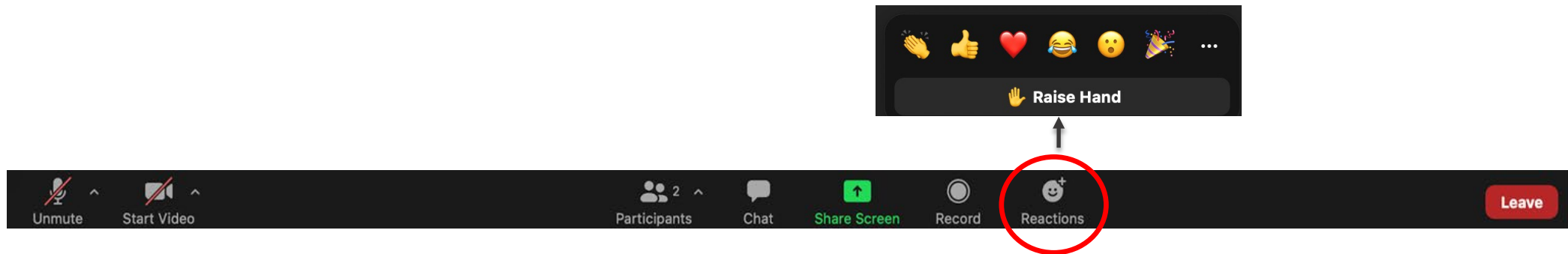
- You will have an opportunity to ask questions following each section of the presentation
- To ensure we hear from as many community members as possible, please adhere to the Q&A protocol:
 -  Request to speak by typing your name in the chat
 -  Type questions directly into the chat
 -  Use the raise hand feature in Zoom
- When speaking:
 - Maintain a civil tone
 - Be mindful of time so that your fellow community members can share their feedback

Anyone in violation of the meeting etiquette guidelines will be muted for the duration of the meeting.

Raise Hand Feature

To ensure we get to as many people as possible, we ask that you use the raise hand feature.

- You can find this feature in your Zoom toolbar in the “Reactions” section. We will call on those to speak in the order they appear.
- To raise your hand while dialing in, press *9



Agenda

- ❑ Introductions
- ❑ Project Overview and Updates
- ❑ Design Updates
- ❑ Construction Updates
- ❑ Art in Transit
- ❑ Community Updates
- ❑ A Look Ahead



Introductions

Bladensburg Bus Garage Reconstruction Project

Project Team

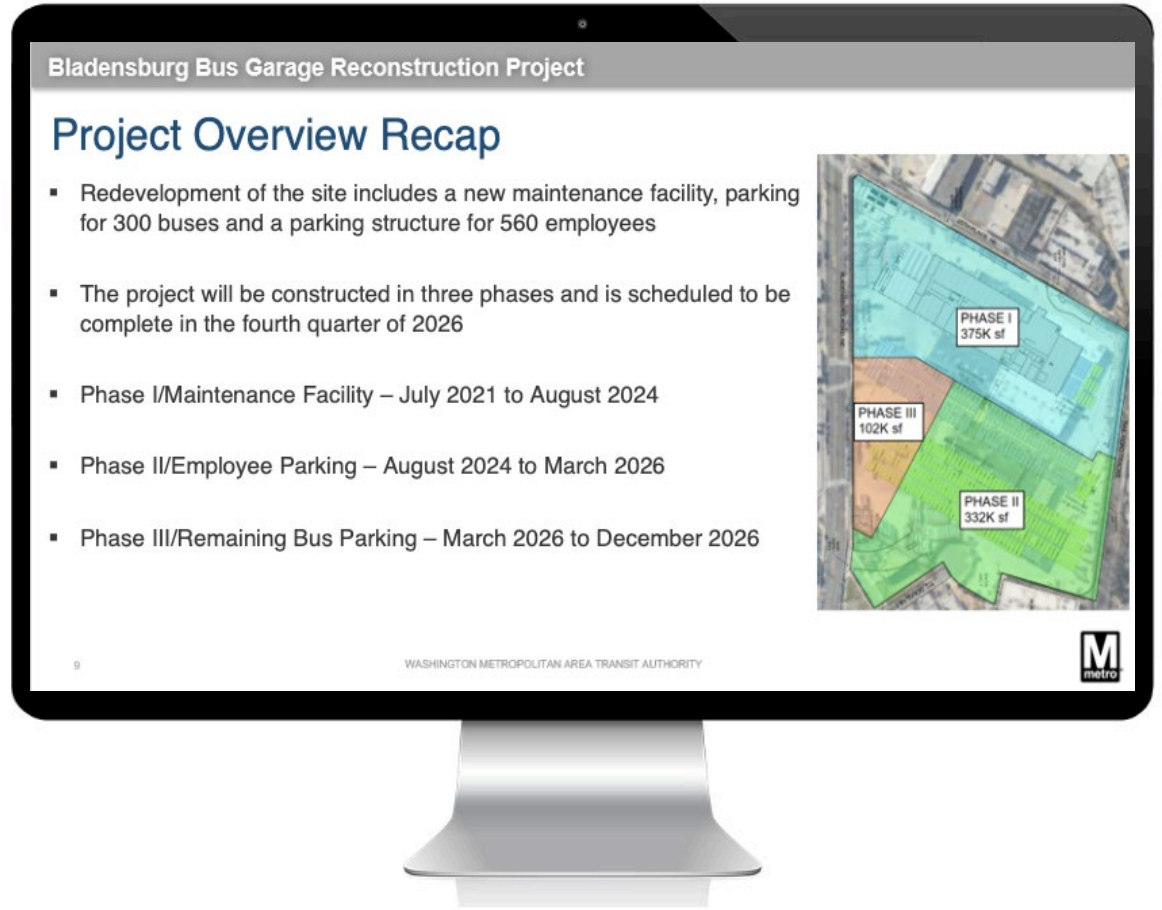
- ❑ Maya Nino, Senior Capital Program Manager, Capital Delivery
- ❑ Shaun Pratt, Project Manager
- ❑ Jameelah Muhammad Ingram, Deputy Project Manager
- ❑ Daniel Goucher, Project Manager (Hensel Phelps)
- ❑ Laurent Odde, Art in Transit Program Manager
- ❑ Jim Ashe, Environmental Coordinator

Project Overview and Updates

Bladensburg Bus Garage Reconstruction Project

Review of Last Meeting

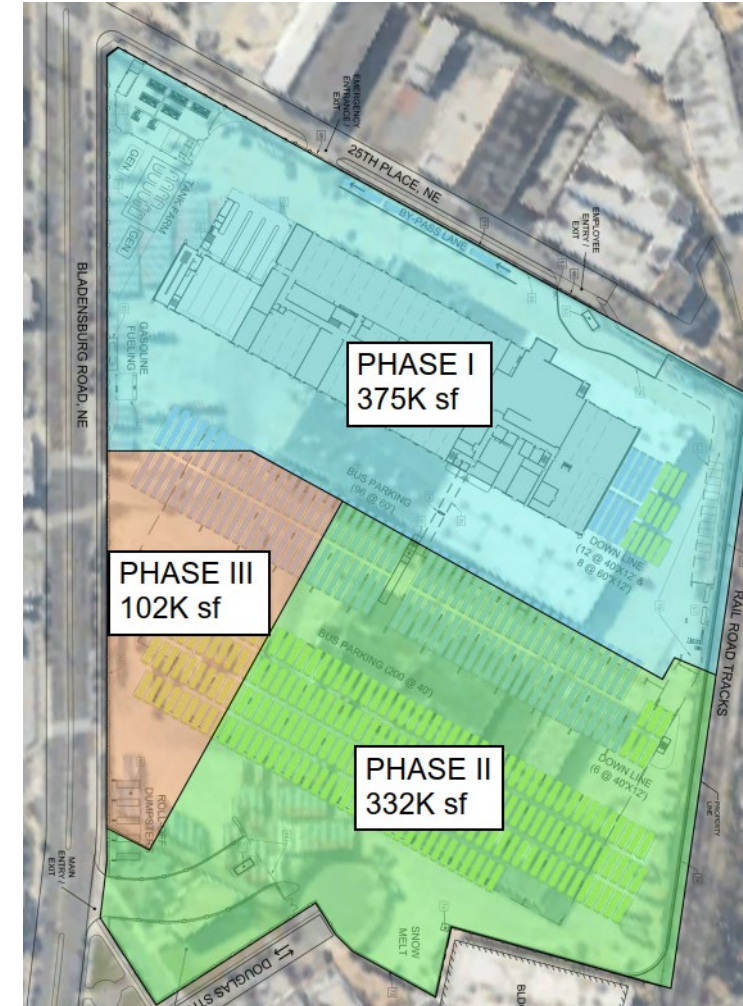
- The previous virtual community meeting was held on September 22, 2022.
- The project team provided updates regarding recent construction, design and the comprehensive site assessment. An update on the Art in Transit installation was also provided. Questions were answered from the community.
- Presentations and recordings of community meetings are available in the "Project Updates" section of the project website wmata.com/BladensburgBusGarage.



Project Overview Recap

- Redevelopment of the site includes a new maintenance facility, parking for 300 buses and a parking structure for 560 employees
- The project will be constructed in three phases and is scheduled to be complete in the fourth quarter of 2026

Phase	Start	Finish
Phase I: Maintenance Facility	July 2021	August 2024
Phase II: Employee Parking	August 2024	March 2026
Phase III: Bus Parking	March 2026	December 2026



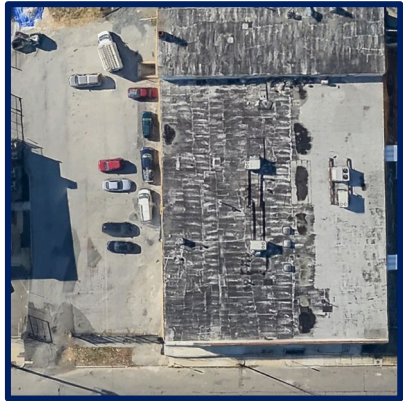
Best Practices for Cleanliness & Noise Control at Construction Site

- ✓ Required daily work area clean up
- ✓ Stationed waste receptacles
- ✓ Prevention of flying debris in inclement weather
- ✓ Installation of Department of Energy & Environment (DOEE)-approved water runoff controls
- ✓ Wash construction vehicle wheels
- ✓ Onsite street sweeper
- ✓ Weekly trash pick-up
- ✓ Typical weekday crew hours:
7 am – 7 pm
- ✓ Limited hours for oversized deliveries:
9:30 am – 3 pm

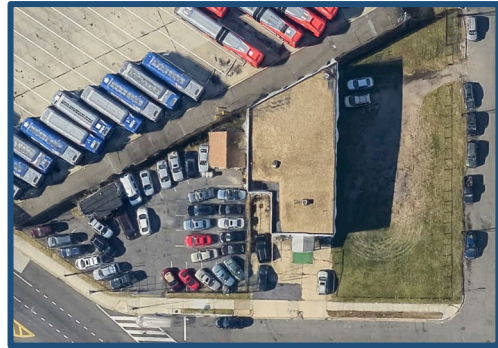


Construction Traffic Flow and Contractor Parking

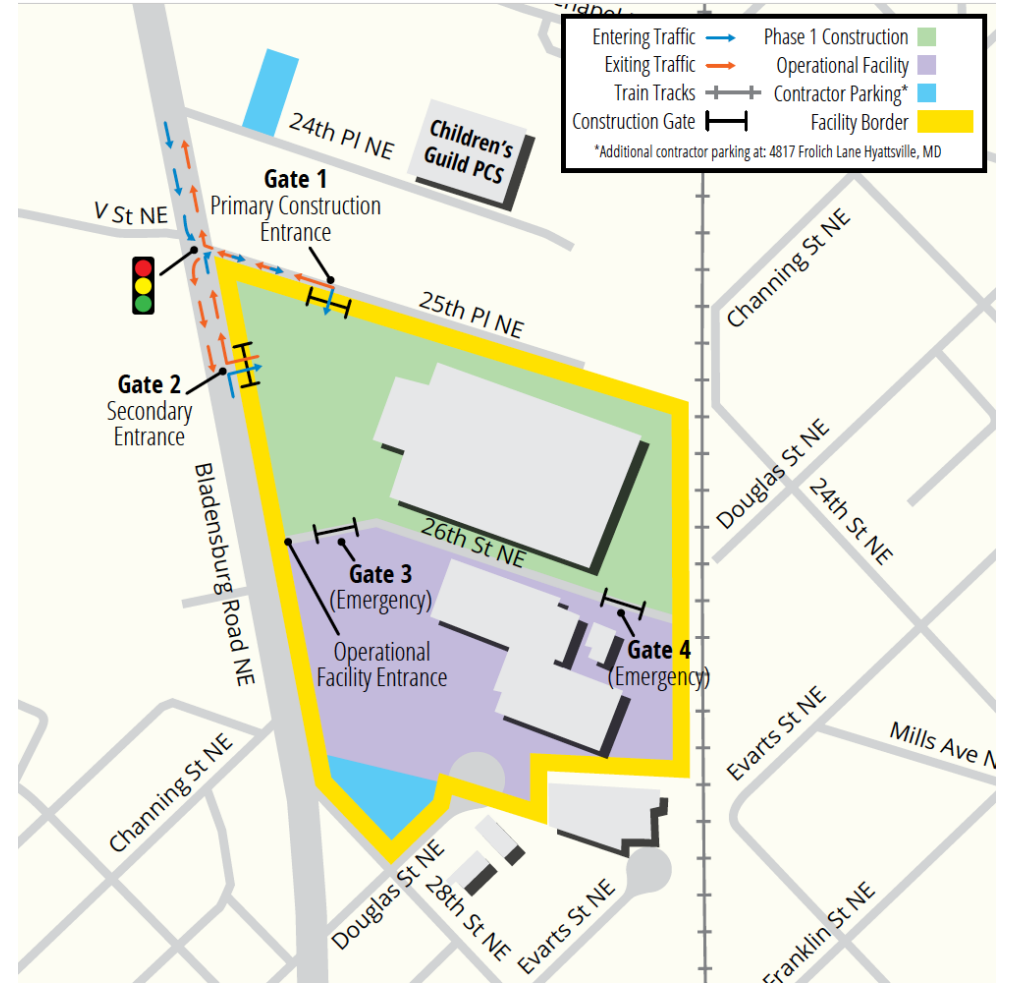
- Reduced parking footprint
- There are two areas designated for contractor personal vehicle parking



2122 24th PI NE



Properties on 28th St NE



Agency Collaboration & Permitting Status

Agency	Status
Federal Transit Administration (FTA)	Categorical exclusion granted (summer 2020)
District Department of Transportation (DDOT)	Received approval at 8/25/22 Public Space Committee Hearing (summer 2022)
District of Columbia Historic Preservation Office	Programmatic Agreement (winter 2020)
District of Columbia Department of Energy and Environment (DOEE)	Cleared for demolition by DOEE (fall 2021); Stormwater Management drawings approved (winter 2022)
DC Water	Coordination taking place
Pepco	Coordination taking place
Washington Gas	Coordination taking place
District Department of Consumer & Regulatory Affairs (DCRA)	Building Foundation Permit issued (summer 2022)

Any Questions?

There are four ways to ask questions



Request to speak by typing your name in the chat



Type questions directly into the chat



Use the raise hand feature in Zoom



If you are in-person, please raise your hand

Bladensburg Bus Garage Design

Bladensburg Bus Garage Reconstruction Project

Utilities Update

- Hickey Run—The stream has been undergrounded in storm sewers (similar to Constitution Avenue and Tiber Creek). This system will be redesigned and refined during the Phase 2 design effort
- Natural Gas—The supply line provides natural gas at the rear of the area in the Phase 2 vicinity. The line will be re-routed from its current location to the new fueling area located along 25th Place NE
- DC Water—DC Water has a sanitary line and easement, which extends from Bladensburg Road to the (closed 26th Street) across the southern portion of the facility. Designers have engaged with DC Water to ensure coordination of project design

Any Questions?

There are four ways to ask questions



Request to speak by typing your name in the chat



Type questions directly into the chat



Use the raise hand feature in Zoom



If you are in-person, please raise your hand

Construction Updates

Bladensburg Bus Garage Reconstruction Project

Phase 1 Construction – Progress

Auger Cast Piles



Start of Auger Cast



Fixed Mast Auger Rig



Auger Cast in Full Motion

Phase 1 Construction – Progress

Pile Caps



Prep For Pile Caps



Pile Cap Formwork



Placed & Stripped Pile Caps



Pile Cap Backfill

Phase 1 Construction – Progress

Grade Beams



Grade Beam Reinforcing



Grade Beam Formwork

Phase 1 Construction – Progress

Rainwater Harvesting Tank



RWH 1-6 First Cut



RWH 1-6 Second Cut



RWH 1-6 Third Cut



RWH 1-6 Fourth Cut



WASHINGTON METROPOLITAN AREA TRANSIT AUTHORITY

February 2023

- Continue underground MEP
- Continue Pile Caps & Grade Beams
- Form / Reinforce / Place RWH 1-6

March 2023

- Continue underground MEP
- Continue Pile Caps & Grade Beams
- Form / Reinforce / Place RWH 1-6
- Start Structural Steel

April 2023

- Continue Structural Steel
- Start Roofing
- Start Precast

May 2023

- Complete Structural Steel
- Continue Precast
- Continue Roofing

Phase 1 Construction – New Activities



Any Questions?

There are four ways to ask questions



Request to speak by typing your name in the chat



Type questions directly into the chat



Use the raise hand feature in Zoom



If you are in-person, please raise your hand

Comprehensive Site Assessment

Bladensburg Bus Garage Reconstruction Project

Comprehensive Site Assessment

- DOEE recently approved a Comprehensive Site Assessment (CSA) plan to take soil samples for contaminant testing
- Samples were collected and test results showed contaminants below CSA thresholds
- Report was submitted to DOEE in September 2022
- Site has been mitigated and DOEE requires no further action as of January 2023



Any Questions?

There are four ways to ask questions



Request to speak by typing your name in the chat



Type questions directly into the chat



Use the raise hand feature in Zoom



If you are in-person, please raise your hand

Art in Transit

Bladensburg Bus Garage Reconstruction Project

Art in Transit Temporary Display Update

- The Art in Transit and project teams will monitor the temporary banners to repair or replace, if needed.
- We interviewed community members and employees about their thoughts on the artwork and the vibrancy and cohesion it brings to the community.



[Watch the Art in Transit video!](#)

AIT Permanent Artwork

- AIT and the Project team will reach out to the community to participate in the development of a permanent artwork at the site as we near the start of Phase 2 in 2024.



Any Questions?

There are four ways to ask questions



Request to speak by typing your name in the chat



Type questions directly into the chat



Use the raise hand feature in Zoom



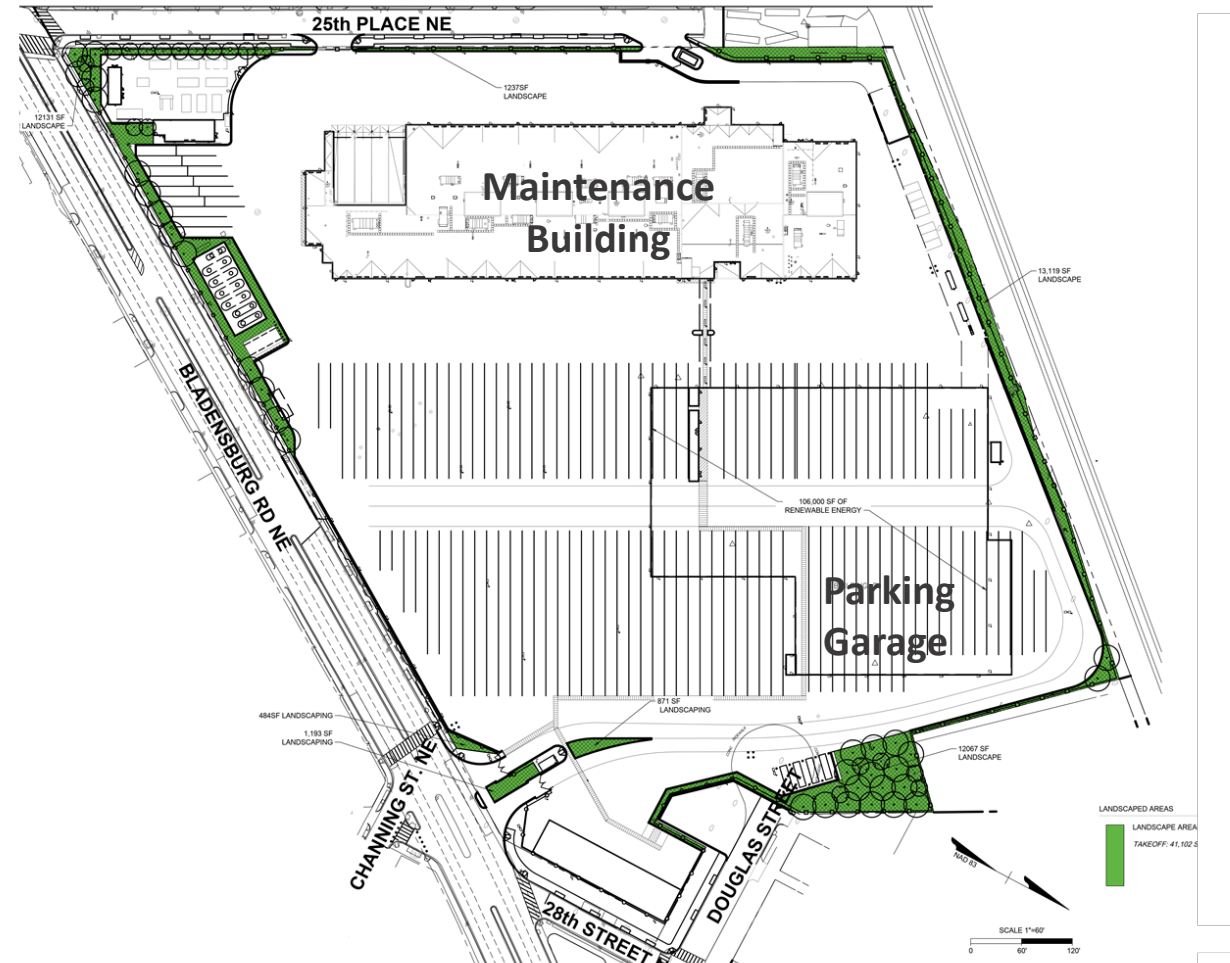
If you are in-person, please raise your hand

Community Updates

Bladensburg Bus Garage Reconstruction Project

Board of Zoning Public Hearing

- The Board of Zoning Public Hearing, originally scheduled for October 19, 2022, was no longer required due to design updates.
- Design updates, related to the Green Area Ratio (GAR), are in progress.



LANDSCAPE PLAN
(Updates in progress)

Communications Toolkit Now Available!

- Community resources now available on the [project updates web page](#)
 - Pre-approved messaging for newsletters and social media
 - Project overview video
 - Fact sheet
 - Project phases handout
 - Frequently asked questions (FAQs)



Bladensburg Bus Garage RECONSTRUCTION PROJECT

OVERVIEW
As part of its Capital Improvement Program, Metro is rebuilding the Bladensburg Bus Garage. First built in 1962, the bus garage is one of Metro's oldest assets. The reconstructed garage will consolidate three existing buildings into one modern, environmentally friendly facility. Construction is expected to be completed in late 2026. The garage will reopen with an expanded fleet, allowing Metro to provide reliable service to even more customers throughout the District of Columbia and parts of Maryland.

COMMUNITY ENHANCEMENTS
The new garage will include several features designed to provide a safer, environmentally conscious facility for the community and Metro's employees.

Environmental Features
With a goal of obtaining LEED Platinum certification, the project design will incorporate many resource-efficient and emissions-reducing elements, including:

- Space for future battery electric bus fleet and infrastructure
- Solar panels
- Rainwater harvesting for bus wash
- Expanded compressed natural gas (CNG) capacity
- Electric vehicle (EV) charging stations for employee passenger vehicles

Two New Entrances
Once the project is complete, the main entrance on 26th Street NE will be closed and replaced with two new entrances to improve safety and traffic flow. The new bus entrance will be located on Bladensburg Road NE across from Channing Street NE, and the new employee entrance will be located on 25th Place NE.

Onsite Parking for Employees
The facility will incorporate a multi-level parking structure to provide spaces for up to 300 Metro buses and 560 Metro employees, leaving street parking available to local residents.

Improved Curb Appeal
Visual and design enhancements such as community-inspired artwork recognizing area history, a new ornamental perimeter fence and exterior architectural finishes may be included.

Phased Construction A three-phase approach will allow the Bladensburg Bus Garage to continue operating during reconstruction.

PHASE 1	PHASE 2	PHASE 3
<ul style="list-style-type: none">• Demolish existing maintenance facility• Install temporary Art in Transit display• Construct new maintenance facility, CNG yard and fuel storage area• Construct new employee entrance• Move bus operations to newly constructed maintenance facility	<ul style="list-style-type: none">• Clark Mills Foundry archaeological survey• Demolish two remaining facility buildings• Construct employee/bus parking structure• Construct new bus entrance• Designate space for future battery electric bus infrastructure• Locate permanent Art in Transit display site	<ul style="list-style-type: none">• Demolish paved bus parking area• Construct new paved bus parking area• Project completion

 wmata.com/BladensburgBusGarage 

Any Questions?

There are four ways to ask questions



Request to speak by typing your name in the chat



Type questions directly into the chat



Use the raise hand feature in Zoom



If you are in-person, please raise your hand

A Look Ahead: What to Expect in the Next Quarter

Bladensburg Bus Garage Reconstruction Project

Next Steps for Project

February 2023 (planned)

- Site underground utilities for MEP (Mechanical, Electrical, and Plumbing)
- Fine grading for building pad
- Installation of bus lift pit cans
- Continue pile cap & grade beam activities
- Form, reinforce, & place Rainwater Harvesting Tank (RWH)

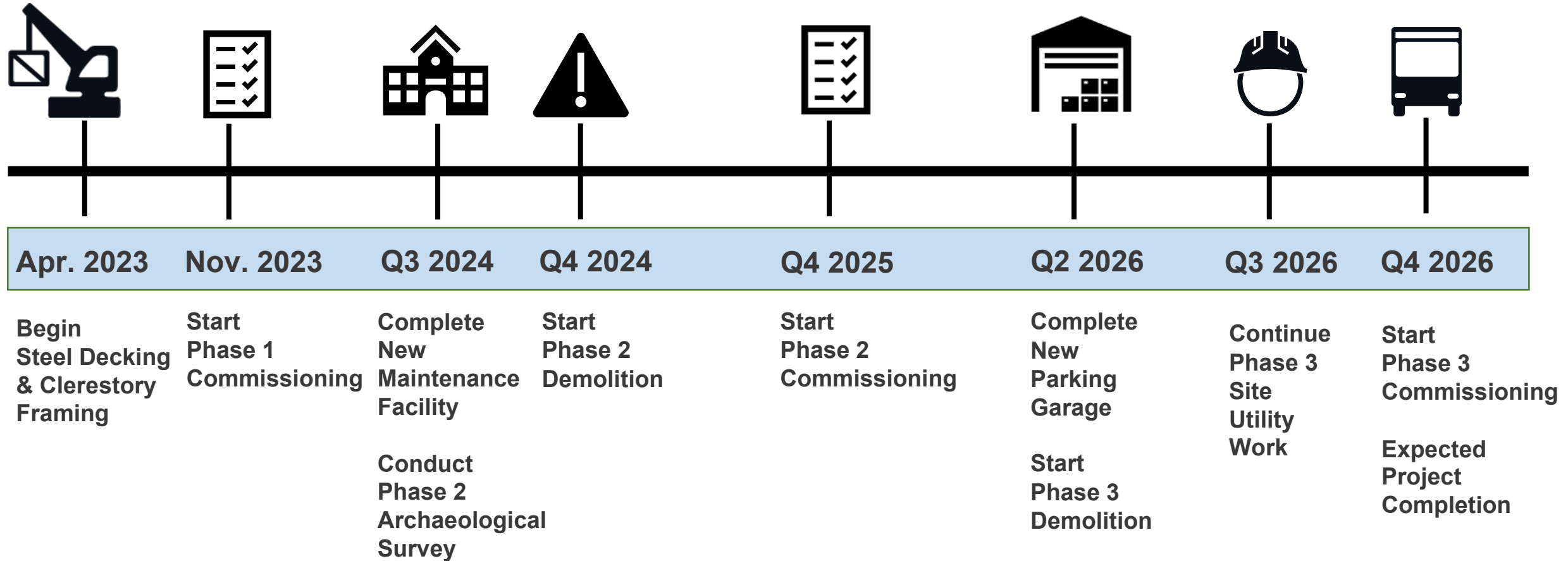
March 2023 (planned)

- Structural steel erection begins for building
- Site underground utilities continue
- Continue installation of bus lift pit cans
- Continue pile cap & grade beam activities
- Continue RWH activities as needed

April 2023 (planned)

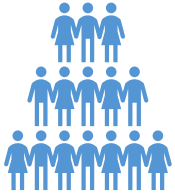
- Structural steel erection continues
- Steel decking begins for building
- Clerestory framing begins for building

Schedule



Community Engagement and Outreach

Stay Connected



Quarterly community meetings:

Next meeting
Spring 2023



Project website:

wmata.com/BladensburgBusGarage

Follow us on:

 Instagram @MetroForward

 Twitter @wmata

 Facebook @MetroForward



[Sign up for project updates](#)

Project communications team email:
BladensburgBusGarage@wmata.com

Any Questions?

There are four ways to ask questions



Request to speak by typing your name in the chat



Type questions directly into the chat



Use the raise hand feature in Zoom



If you are in-person, please raise your hand

Thank You

Bladensburg Bus Garage Reconstruction Project