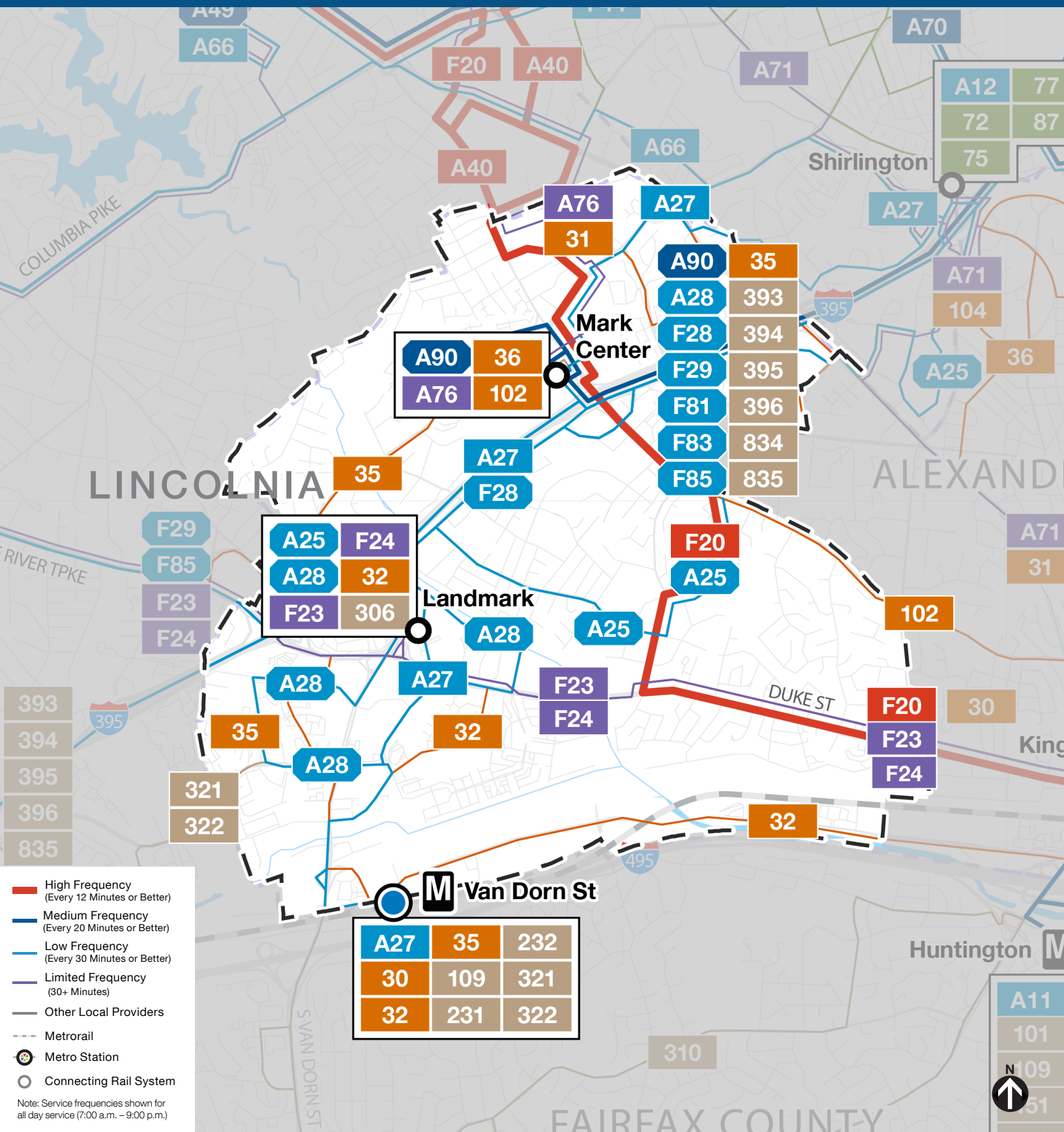


NEIGHBORHOOD PROFILE: ALEXANDRIA WEST, LANDMARK & SEMINARY HILLS



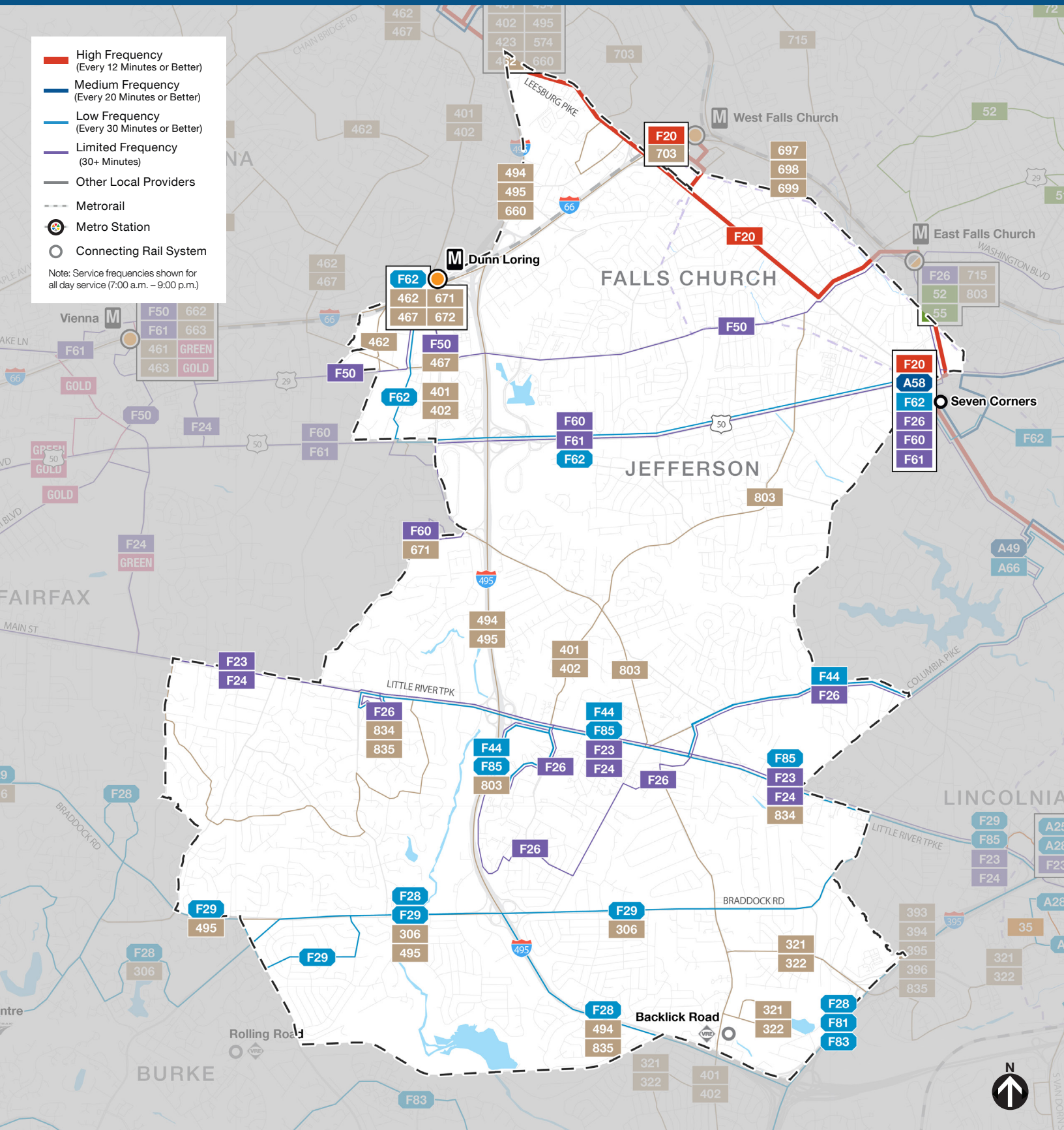
NEIGHBORHOOD PROFILE: ALEXANDRIA WEST, LANDMARK & SEMINARY HILLS

If you currently ride...	Your new route could be...	Description of Route(s)
17B	F28, F29	Two routes will replace the current 17B: <ul style="list-style-type: none"> - Route F28 runs between Kings Park West and Pentagon Station. The F28 has a similar routing to the current 17B between Zion Dr/Guinea Rd and Commonwealth Blvd and on portions of Braddock Rd between Danbury Forest Dr and Queensbury Ave. The F28 provides a connection to Kings Park West. - Route F29 runs between George Mason and Pentagon Station. The F29 has a similar routing to the current 17B between Pentagon Station and Braddock Rd/Backlick Rd.
17M	F29	Route F29 has a similar routing to the current 17M between Braddock Rd/Wakefield Park and Pentagon Station.
21C	A28	Route A28 has a similar routing to the current 21C.
22F	A25, A66, F20	Three routes will replace the current 22F: <ul style="list-style-type: none"> - Route A25 runs between Landmark Transit Center and Pentagon Station. The A25 has a similar routing to the current 22F between N Van Dorn St/W Braddock Rd and Pentagon Station. The A25 provides a connection to Landmark. - Route A66 runs between Culmore and Pentagon Station. The A66 has a similar routing to the current 22F between Leesburg Pike/Carlin Springs Rd and Leesburg Pike/S George Mason Dr. The A66 provides connections to Bailey's Crossroads and Culmore. - Route F20 runs between Tysons Station and King St-Old Town Station. The F20 has a similar routing to the current 22F between Carlin Springs Rd/Seminary Rd and Filmore Ave/N Beauregard St. The F20 provides connections to Tysons Corner Center, East Falls Church Station, Seven Corners, Bailey's Crossroads and King St-Old Town Station.
25B	A76	Route A76 has a similar routing to the current 25B between Mark Center Station and Ballston Station. The A76 provides a connection to Rosslyn Station via Fairfax Drive, 10th Street N and Arlington Blvd.
28A	F20	Route F20 has a similar routing to the current 28A.
28F	A27, A66	Two routes will replace the current 28F: <ul style="list-style-type: none"> - Route A27 runs between Van Dorn Station and the Pentagon. It provides a connection to 28F customers traveling between Seminary Towers, Washington Forest, Fort Ward Heights and the Pentagon. - Route A66 runs between Culmore and the Pentagon. While it travels along a different routing than the current 28F, it provides a connection to customers between Skyline City and the Pentagon via Claremont, Arlington Mill Rd, and the Shirlington Transit Center.
29G	F85, F44	Two routes will replace the current 29G: <ul style="list-style-type: none"> - Route F85 has a similar routing to the current 29G. - Route F44 runs between Annandale and Pentagon Station. The F44 has a similar routing to the current 29G between Americana Dr/Inverton Rd and Little River Tpke/John Marr Dr. The F44 also connects current 29G riders from Annandale to the Pentagon Station via Columbia Pike. The F44 provides connections to Annandale Shopping Center, Bailey's Crossroads, and the Columbia Pike corridor.
29K	F23, F24	Two routes will replace the current 29K: <ul style="list-style-type: none"> - Route F23 runs between George Mason University and King St-Old Town. The F23 has a similar routing to the current 29K. - Route F24 runs between Vienna Station and King St-Old Town. The F24 has a similar routing to the current 29K between Little River Tpke/Pickets Rd and King St. The F24 provides connections to Vienna Station.
29N	F24, F23	Two routes will replace the current 29N: <ul style="list-style-type: none"> - Route F24 has a similar routing to the current 29N. - Route F23 has a similar routing to the current 29N between Little River Tpke/Pickets Rd and King St. The F23 provides connections to George Mason University.
7A	A27	Route A27 has a similar routing to the current 7A.

NEIGHBORHOOD PROFILE: ALEXANDRIA WEST, LANDMARK & SEMINARY HILLS

If you currently ride...	Your new route could be...	Description of Route(s)
7M	A90	Route A90 has a similar routing to the current 7M.
8W	A25	Route A25 has a similar routing to the current 8W between the Seminary Valley and Foxchase neighborhoods via Taney Ave, N. Jordan and N. Howard Sts. Route A25 will also connect to Fort Ward and South Fairlington neighborhoods to Pentagon Station similar to current 22F routing from N. Van Dorn St and W. Braddock Rd. For service at stops along N. Van Dorn St between Taney Ave and Kenmore Ave, Route A28 will continue to provide service along N. Van Dorn St to and from Pentagon Station.

NEIGHBORHOOD PROFILE: ANNANDALE & FALLS CHURCH



NEIGHBORHOOD PROFILE: ANNANDALE & FALLS CHURCH

If you currently ride...	Your new route could be...	Description of Route(s)
16A	F44, A40	Two routes will replace current 16A: - Route F44 has a similar routing to the current 16A with a slight change at Pentagon Station using Army Navy Drive in both directions. - Route A40 runs between Skyline and National Landing. The A40 has a similar routing to the current 16A between Army Navy Dr/S Hayes St and Columbia Pike/S Jefferson St.
17B	F28, F29	Two routes will replace the current 17B: - Route F28 runs between Kings Park West and Pentagon Station. The F28 has a similar routing to the current 17B between Zion Dr/Guinea Rd and Commonwealth Blvd and on portions of Braddock Rd between Danbury Forest Dr and Queensbury Ave. The F28 provides a connection to Kings Park West. - Route F29 runs between George Mason and Pentagon Station. The F29 has a similar routing to the current 17B between Pentagon Station and Braddock Rd/Backlick Rd.
17G	F29, F28	Two routes will replace the current 17G: - Route F29 runs between George Mason and the Pentagon. The F29 has a similar routing to the current 17G between George Mason University and the Capital Beltway. - Route F28 runs between Kings Park West and the Pentagon. The F28 has a similar routing to the current 17G between Braddock Rd/Southampton Dr and Pentagon Station. The F28 provides a connection to Kings Park West.
17K	F28	Route F28 has a similar routing to the current 17K, and extends to serve Olde Forge Park neighborhood via Twinbrook Rd.
17M	F29	Route F29 has a similar routing to the current 17M between Braddock Rd/Wakefield Park and Pentagon Station.
18J	Fairfax Connector 310, 321, 322	Three routes provide an alternative to the current 18J: - Fairfax Connector Route 310 has a similar routing to the current 18J on Old Keene Mill Rd between Commerce St (Springfield Plaza) and Rolling Valley P&R. - Fairfax Connector Route 321 (to Franconia-Springfield Station) and Route 322 (from Franconia-Springfield Station) provide connections to portions of Backlick Rd and Commerce St on the current 18J and rail connections at Franconia-Springfield Station.
1A	F60, A58, A62	"Three routes will replace the current 1A: - Route F60 runs between Ballston Station and Fair Oaks Mall. The F60 has a similar routing to the current 1A between Arlington Blvd/Nutley St and Ballston Station. The F60 provides connections to Fairfax Government Center and Fair Oaks Mall. - Route A58 runs between Seven Corners Transit Center and Farragut Square. The A58 has a similar routing to the current 1A between Seven Corners and Ballston MU Station. The A58 provides connections to Clarendon Station, Court House Station, Rosslyn Station, Farragut West Station and Farragut Square. - Route F62 runs between Dunn Loring-Merrifield Station and Rosslyn Station. The F62 has a similar routing to the current 1A between Arlington Blvd/Gallows Rd and Seven Corners. The F62 provides connections to Dunn Loring-Merrifield Station, Court House Station and Rosslyn Station.
2B	F50, F61 F60	Three routes will replace the current 2B: - Route F50 runs between Ballston Station and George Mason University. The F50 has a similar routing to the current 2B between Ballston Station and Route 29/Blake Ln. The F50 provides connections to Vienna Station, Fairfax City and George Mason University. - Route F61 has a similar routing between Fair Oaks Mall and Vienna Station along Blake Ln and Jermantown Rd. The F61 continues from Vienna Station to Ballston Station via Arlington Blvd. - Route F60 runs between Ballston Station and Fair Oaks Mall. The F60 provides a direct connection for current 2B riders between Ballston Station and Fair Oaks Mall via Arlington Blvd.

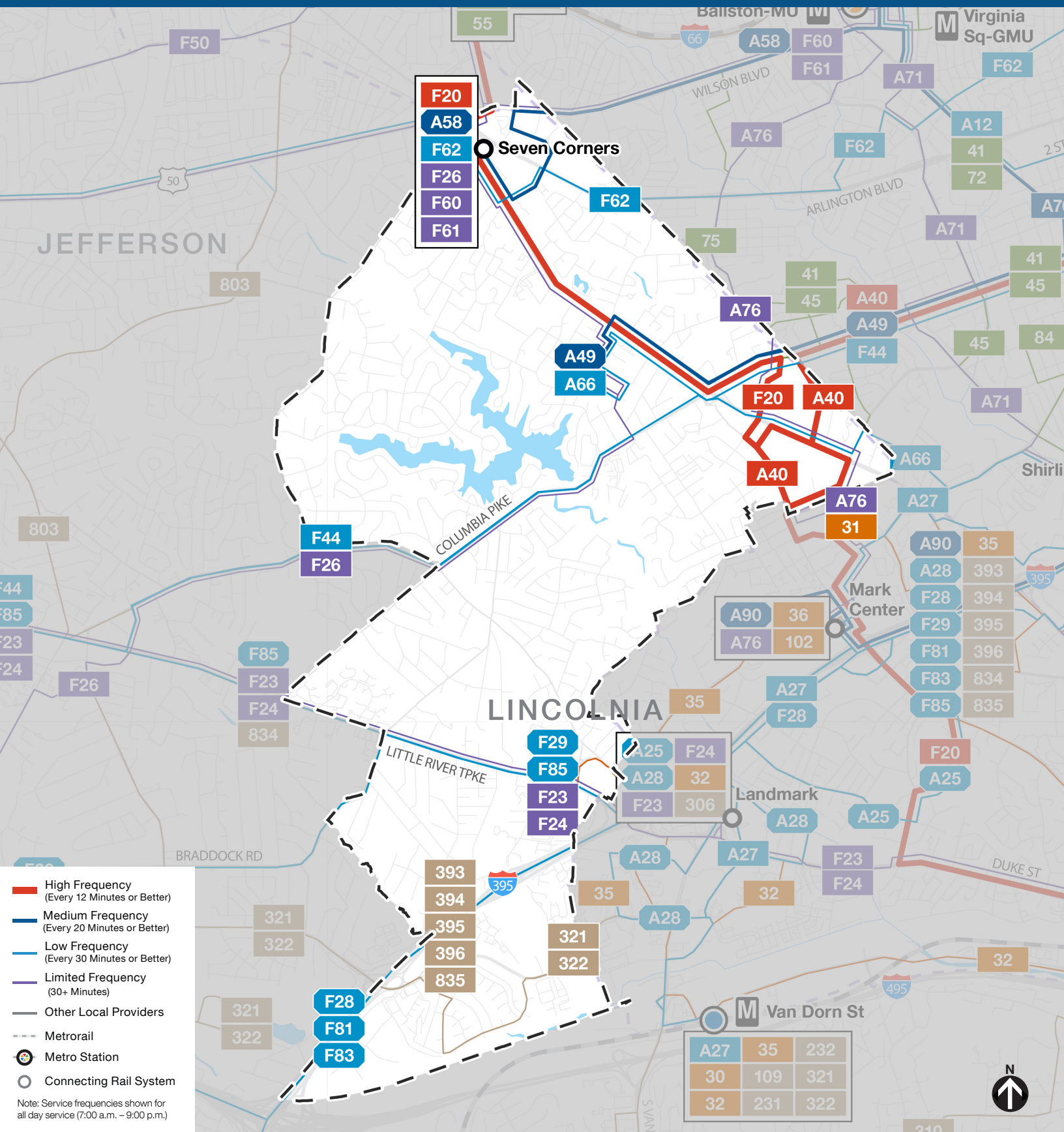
NEIGHBORHOOD PROFILE: ANNANDALE & FALLS CHURCH

If you currently ride...	Your new route could be...	Description of Route(s)
1B	F62, F60, A58	<p>Three routes will replace the current 1B:</p> <ul style="list-style-type: none"> - Route F62 runs between Dunn Loring-Merrifield Station and Rosslyn Station. The F62 has a similar routing to the current 1B between Dunn Loring-Merrifield Station and Seven Corners. The F62 provides connections to Court House Station and Rosslyn Station. - Route F60 runs between Ballston Station and Fair Oaks Mall. The F60 has a similar routing to the current 1B between Arlington Blvd/Jaguar Trail and Ballston-MU Station. The F60 provides connections to Fairfax Government Center and Fair Oaks Mall. - Route A58 runs between Seven Corners Transit Center and Farragut Square. The A58 has a similar routing to the current 1B between Seven Corners and Ballston MU Station. The A58 provides connections to Clarendon Station, Court House Station, Rosslyn Station, Farragut West Station and Farragut Square.
1C	F60, F62	<p>Two routes will replace the current 1C:</p> <ul style="list-style-type: none"> - Route F60 runs between Ballston Station and Fair Oaks Mall. The F60 has a similar routing to the current 1C between Gallows Rd/Arlington Blvd and Fair Oaks Mall. The F60 provides connections to Seven Corners and Ballston Station. - Route F62 runs between Dunn Loring-Merrifield Station and Rosslyn Station. The F62 has a similar routing to the current 1B between Dunn Loring-Merrifield Station and Seven Corners. The F62 provides connections to Court House Station and Rosslyn Station.
26A	F26, F44, F20	<p>Three routes will replace the current 26A:</p> <ul style="list-style-type: none"> - Route F26 has a similar routing to the current 26A. - Route F44 runs between Columbia Pike and Pentagon Station. The F44 has a similar routing to the current 26A between John Marr Dr/Tom Davis Dr and Tyler St/Columbia Pike. The F44 provides connections to Annandale, Bailey's Crossroads, and Pentagon Station. - Route F20 runs between Tysons Station and King St-Old Town Station. The F20 has a similar routing to the current 26A between Leesburg Pike/Glenmore Dr and East Falls Church Station. The F20 provides connections to Tysons Station, West Falls Church Station, Seven Corners, Bailey's Crossroads and King St-Old Town Station.
28A	F20	Route F20 has a similar routing to the current 28A.
29G	F85, F44	<p>Two routes will replace the current 29G:</p> <ul style="list-style-type: none"> - Route F85 has a similar routing to the current 29G. - Route F44 runs between Annandale and Pentagon Station. The F44 has a similar routing to the current 29G between Americana Dr/Inverton Rd and Little River Tpke/John Marr Dr. The F44 also connects current 29G riders from Annandale to the Pentagon Station via Columbia Pike. The F44 provides connections to Annandale Shopping Center, Bailey's Crossroads, and the Columbia Pike corridor.
29K	F23, F24	<p>Two routes will replace the current 29K:</p> <ul style="list-style-type: none"> - Route F23 runs between George Mason University and King St-Old Town. The F23 has a similar routing to the current 29K. - Route F24 runs between Vienna Station and King St-Old Town. The F24 has a similar routing to the current 29K between Little River Tpke/Pickets Rd and King St. The F24 provides connections to Vienna Station.
29N	F24, F23	<p>Two routes will replace the current 29N:</p> <ul style="list-style-type: none"> - Route F24 has a similar routing to the current 29N. - Route F23 has a similar routing to the current 29N between Little River Tpke/Pickets Rd and King St. The F23 provides connections to George Mason University.
2A	F50	Route F50 has a similar routing to the current 2A, and extends to serve George Mason University via Vienna Station. The F50 provides connections to Vienna Station, Fairfax City and George Mason University.

NEIGHBORHOOD PROFILE: ANNANDALE & FALLS CHURCH

If you currently ride...	Your new route could be...	Description of Route(s)
2B	F50, F61, F60	<p>Three routes will replace the current 2B:</p> <ul style="list-style-type: none">- Route F50 runs between Ballston Station and George Mason University. The F50 has a similar routing to the current 2B between Ballston Station and Route 29/Blake Ln. The F50 provides connections to Vienna Station, Fairfax City and George Mason University.- Route F61 has a similar routing between Fair Oaks Mall and Vienna Station along Blake Ln and Jermantown Rd. The F61 continues from Vienna Station to Ballston Station via Arlington Blvd.- Route F60 runs between Ballston Station and Fair Oaks Mall. The F60 provides a direct connection for current 2B riders between Ballston Station and Fair Oaks Mall via Arlington Blvd.

NEIGHBORHOOD PROFILE: BAILEY'S CROSSROADS & LINCOLNIA



NEIGHBORHOOD PROFILE: BAILEY'S CROSSROADS & LINCOLNIA

If you currently ride...	Your new route could be...	Description of Route(s)
16A	F44, A40	Two routes will replace current 16A: <ul style="list-style-type: none"> - Route F44 has a similar routing to the current 16A with a slight change at Pentagon Station using Army Navy Drive in both directions. - Route A40 runs between Skyline and National Landing. The A40 has a similar routing to the current 16A between Army Navy Dr/S Hayes St and Columbia Pike/S Jefferson St.
16C	A49, A66, F44, A40	Several routes will replace the current 16C: <ul style="list-style-type: none"> - Route A49 runs between Culmore and Metro Center. The A49 has a similar routing to the current 16C between Culmore and Columbia Pike/S Courthouse Rd during the peak period. The A49 provides connections to Farragut Square and Metro Center. - Route A66 runs between Culmore and Pentagon Station. The A66 connects current 16C riders from Culmore to Pentagon Station via Shirlington. - Route F44 runs between Annandale and Pentagon Station. The F44 has a similar routing to the current 16C between Baileys Crossroads and Pentagon Station. - Route A40 runs between Skyline and National Landing. The A40 has a similar routing to the current 16C between Army Navy Dr/S Hayes St and Columbia Pike/S Jefferson St. The A40 provides connections to Pentagon City Station and Crystal City Station.
16E	A40, F44, A66	Several routes will replace the current 16E: <ul style="list-style-type: none"> - Route A40 runs between Skyline and National Landing. The A40 has a similar routing to the current 16E between Columbia Pike/S Jefferson St and Pentagon City Station and provides connections to Crystal City. During the late night hours, the A40 provides a new connection to L'Enfant Plaza Station - Route F44 runs between Annandale and the Pentagon. The F44 has a similar routing to the current 16E between Baileys Cross Rd and the Pentagon. - Route A66 runs between Culmore and Pentagon Station. The A66 connects current 16E riders from Culmore to Pentagon Station via Shirlington.
16M	A40	Route A40 has a similar routing to the current 16M.
17B	F28, F29	Two routes will replace the current 17B: <ul style="list-style-type: none"> - Route F28 runs between Kings Park West and Pentagon Station. The F28 has a similar routing to the current 17B between Zion Dr/Guinea Rd and Commonwealth Blvd and on portions of Braddock Rd between Danbury Forest Dr and Queensbury Ave. The F28 provides a connection to Kings Park West. - Route F29 runs between George Mason and Pentagon Station. The F29 has a similar routing to the current 17B between Pentagon Station and Braddock Rd/Backlick Rd.
17M	F29	Route F29 has a similar routing to the current 17M between Braddock Rd/Wakefield Park and Pentagon Station.
1A	F60, A58, F62	Three routes will replace the current 1A: <ul style="list-style-type: none"> - Route F60 runs between Ballston Station and Fair Oaks Mall. The F60 has a similar routing to the current 1A between Arlington Blvd/Nutley St and Ballston Station. The F60 provides connections to Fairfax Government Center and Fair Oaks Mall. - Route A58 runs between Seven Corners Transit Center and Farragut Square. The A58 has a similar routing to the current 1A between Seven Corners and Ballston MU Station. The A58 provides connections to Clarendon Station, Court House Station, Rosslyn Station, Farragut West Station and Farragut Square. - Route F62 runs between Dunn Loring-Merrifield Station and Rosslyn Station. The F62 has a similar routing to the current 1A between Arlington Blvd/Gallows Rd and Seven Corners. The F62 provides connections to Dunn Loring-Merrifield Station, Court House Station and Rosslyn Station.

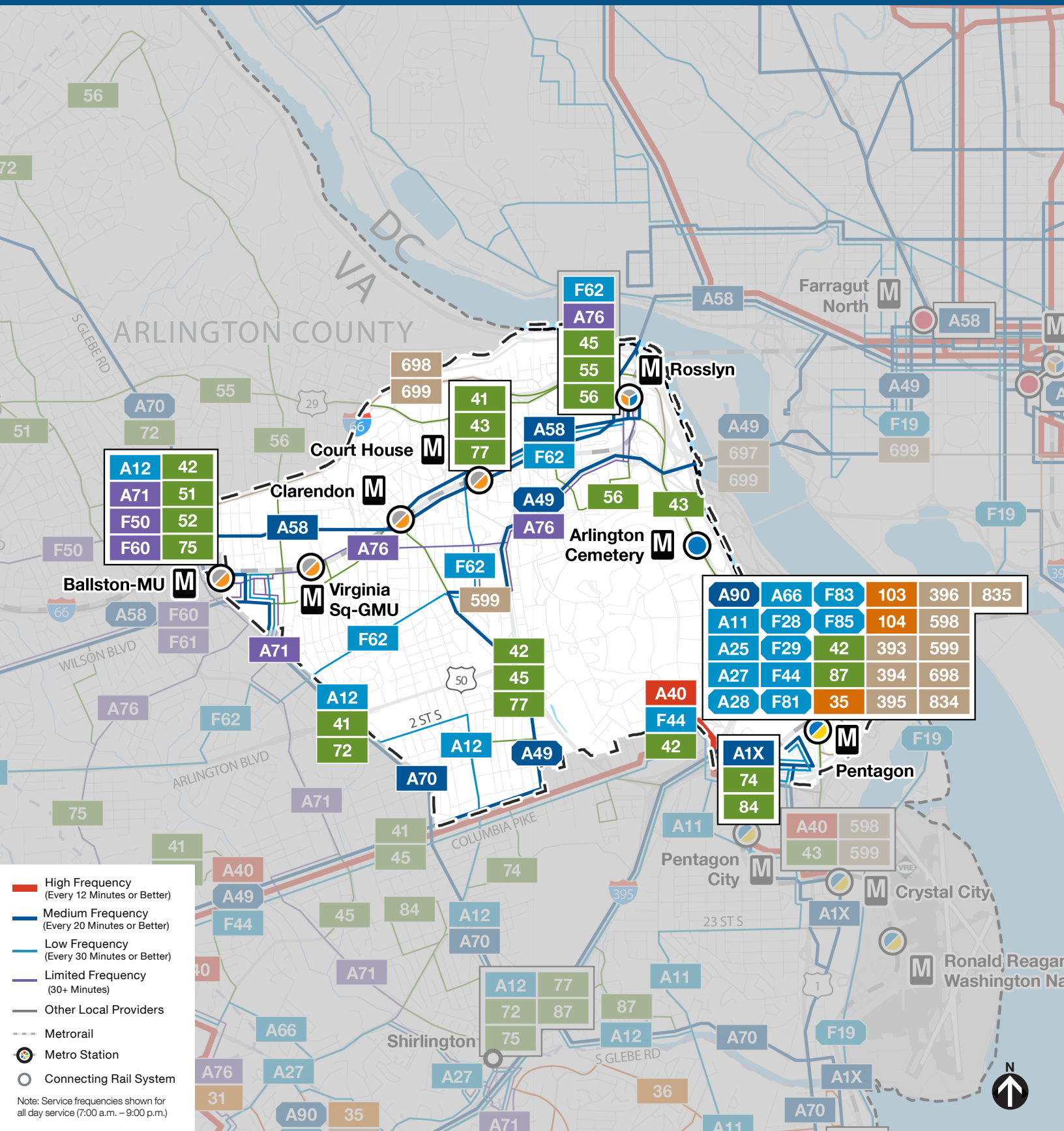
NEIGHBORHOOD PROFILE: BAILEY'S CROSSROADS & LINCOLNIA

If you currently ride...	Your new route could be...	Description of Route(s)
1B	F62, F60, A58	<p>Three routes will replace the current 1B:</p> <ul style="list-style-type: none"> - Route F62 runs between Dunn Loring-Merrifield Station and Rosslyn Station. The F62 has a similar routing to the current 1B between Dunn Loring-Merrifield Station and Seven Corners. The F62 provides connections to Court House Station and Rosslyn Station. - Route F60 runs between Ballston Station and Fair Oaks Mall. The F60 has a similar routing to the current 1B between Arlington Blvd/Jaguar Trail and Ballston-MU Station. The F60 provides connections to Fairfax Government Center and Fair Oaks Mall. - Route A58 runs between Seven Corners Transit Center and Farragut Square. The A58 has a similar routing to the current 1B between Seven Corners and Ballston MU Station. The A58 provides connections to Clarendon Station, Court House Station, Rosslyn Station, Farragut West Station and Farragut Square.
22F	A25, A66, F20	<p>Three routes will replace the current 22F:</p> <ul style="list-style-type: none"> - Route A25 runs between Landmark Transit Center and Pentagon Station. The A25 has a similar routing to the current 22F between N Van Dorn St/W Braddock Rd and Pentagon Station. The A25 provides a connection to Landmark. - Route A66 runs between Culmore and Pentagon Station. The A66 has a similar routing to the current 22F between Leesburg Pike/Carlin Springs Rd and Leesburg Pike/S George Mason Dr. The A66 provides connections to Bailey's Crossroads and Culmore. - Route F20 runs between Tysons Station and King St-Old Town Station. The F20 has a similar routing to the current 22F between Carlin Springs Rd/Seminary Rd and Filmore Ave/N Beauregard St. The F20 provides connections to Tysons Corner Center, East Falls Church Station, Seven Corners, Bailey's Crossroads and King St-Old Town Station.
25B	A76	Route A76 has a similar routing to the current 25B between Mark Center Station and Ballston Station. The A76 provides a connection to Rosslyn Station via Fairfax Drive, 10th Street N and Arlington Blvd.
26A	F26, F44, F20	<p>Three routes will replace the current 26A:</p> <ul style="list-style-type: none"> - Route F26 has a similar routing to the current 26A. - Route F44 runs between Columbia Pike and Pentagon Station. The F44 has a similar routing to the current 26A between John Marr Dr/Tom Davis Dr and Tyler St/Columbia Pike. The F44 provides connections to Annandale, Bailey's Crossroads, and Pentagon Station. - Route F20 runs between Tysons Station and King St-Old Town Station. The F20 has a similar routing to the current 26A between Leesburg Pike/Glenmore Dr and East Falls Church Station. The F20 provides connections to Tysons Station, West Falls Church Station, Seven Corners, Bailey's Crossroads and King St-Old Town Station.
28A	F20	Route F20 has a similar routing to the current 28A.
28F	A27, A66	<p>Two routes will replace the current 28F:</p> <ul style="list-style-type: none"> - Route A27 runs between Van Dorn Station and the Pentagon. It provides a connection to 28F customers traveling between Seminary Towers, Washington Forest, Fort Ward Heights and the Pentagon. - Route A66 runs between Culmore and the Pentagon. While it travels along a different routing than the current 28F, it provides a connection to customers between Skyline City and the Pentagon via Claremont, Arlington Mill Rd, and the Shirlington Transit Center.
29G	F85, F44	<p>Two routes will replace the current 29G:</p> <ul style="list-style-type: none"> - Route F85 has a similar routing to the current 29G. - Route F44 runs between Annandale and Pentagon Station. The F44 has a similar routing to the current 29G between Americana Dr/Inverton Rd and Little River Tpke/John Marr Dr. The F44 also connects current 29G riders from Annandale to the Pentagon Station via Columbia Pike. The F44 provides connections to Annandale Shopping Center, Bailey's Crossroads, and the Columbia Pike corridor.

NEIGHBORHOOD PROFILE: BAILEY'S CROSSROADS & LINCOLNIA

If you currently ride...	Your new route could be...	Description of Route(s)
29K	F23, F24	Two routes will replace the current 29K: <ul style="list-style-type: none">- Route F23 runs between George Mason University and King St-Old Town. The F23 has a similar routing to the current 29K.- Route F24 runs between Vienna Station and King St-Old Town. The F24 has a similar routing to the current 29K between Little River Tpke/Pickets Rd and King St. The F24 provides connections to Vienna Station.
29N	F24, F23	Two routes will replace the current 29N: <ul style="list-style-type: none">- Route F24 has a similar routing to the current 29N.- Route F23 has a similar routing to the current 29N between Little River Tpke/Pickets Rd and King St. The F23 provides connections to George Mason University.
4B	F62	Route F62 has a similar routing to the current 4B, and extends to serve Dunn Loring Station via Arlington Blvd and Merrilee Dr.

NEIGHBORHOOD PROFILE: BALLSTON, COURTHOUSE, CLARENDON & ROSSLYN



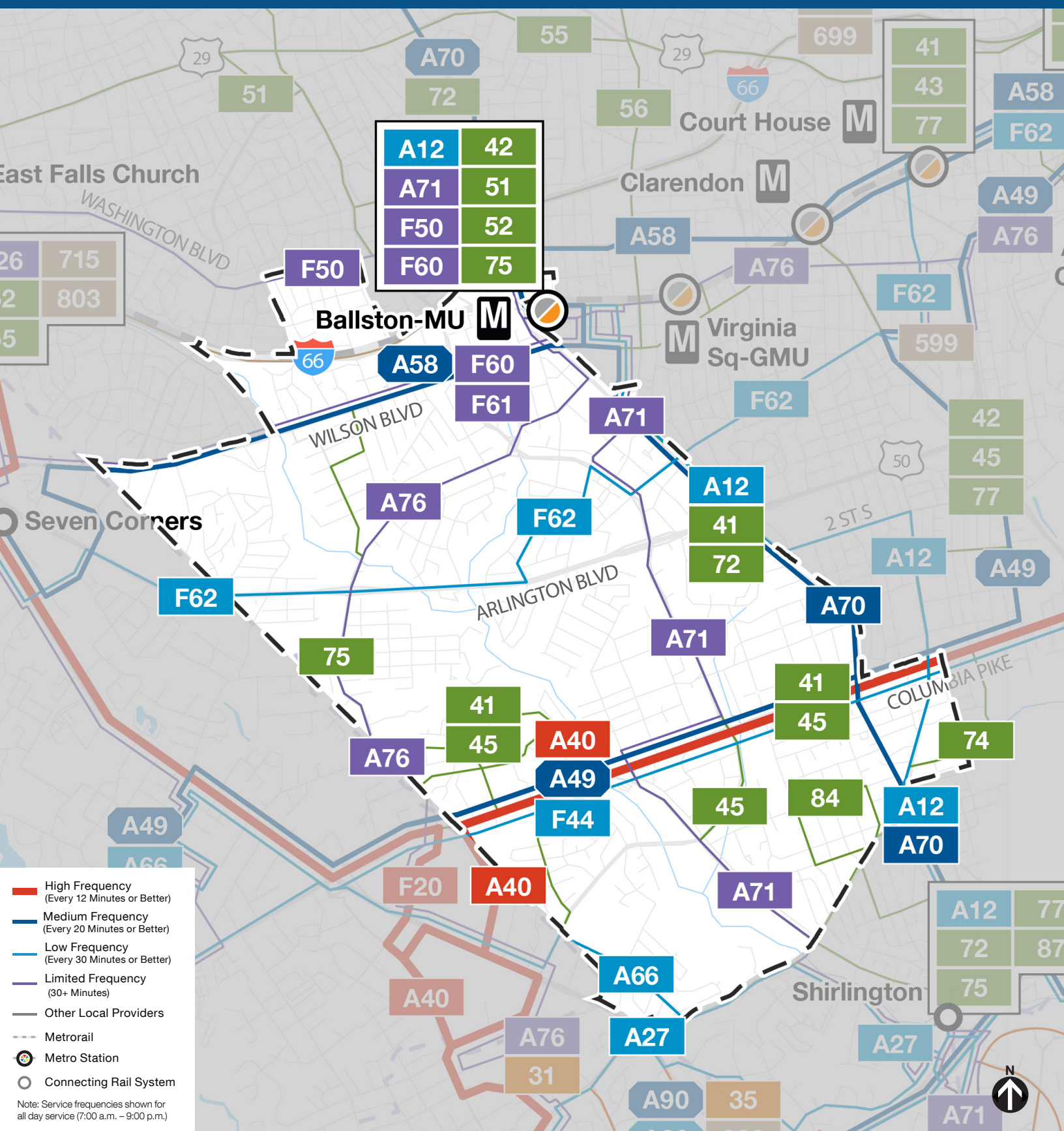
NEIGHBORHOOD PROFILE: BALLSTON, COURTHOUSE, CLARENDON & ROSSLYN

If you currently ride...	Your new route could be...	Description of Route(s)
10B	A12	Route A12 has a similar routing to the current 10B.
1A	F60, A58, F62	<p>Three routes will replace the current 1A:</p> <ul style="list-style-type: none"> - Route F60 runs between Ballston Station and Fair Oaks Mall. The F60 has a similar routing to the current 1A between Arlington Blvd/Nutley St and Ballston Station. The F60 provides connections to Fairfax Government Center and Fair Oaks Mall. - Route A58 runs between Seven Corners Transit Center and Farragut Square. The A58 has a similar routing to the current 1A between Seven Corners and Ballston MU Station. The A58 provides connections to Clarendon Station, Court House Station, Rosslyn Station, Farragut West Station and Farragut Square. - Route F62 runs between Dunn Loring-Merrifield Station and Rosslyn Station. The F62 has a similar routing to the current 1A between Arlington Blvd/Gallows Rd and Seven Corners. The F62 provides connections to Dunn Loring-Merrifield Station, Court House Station and Rosslyn Station.
1B	F62, F60, A58	<p>Three routes will replace the current 1B:</p> <ul style="list-style-type: none"> - Route F62 runs between Dunn Loring-Merrifield Station and Rosslyn Station. The F62 has a similar routing to the current 1B between Dunn Loring-Merrifield Station and Seven Corners. The F62 provides connections to Court House Station and Rosslyn Station. - Route F60 runs between Ballston Station and Fair Oaks Mall. The F60 has a similar routing to the current 1B between Arlington Blvd/Jaguar Trail and Ballston-MU Station. The F60 provides connections to Fairfax Government Center and Fair Oaks Mall. - Route A58 runs between Seven Corners Transit Center and Farragut Square. The A58 has a similar routing to the current 1B between Seven Corners and Ballston MU Station. The A58 provides connections to Clarendon Station, Court House Station, Rosslyn Station, Farragut West Station and Farragut Square.
22A	A71, A66	<p>Two routes will replace the current 22A:</p> <ul style="list-style-type: none"> - Route A71 runs between Ballston Station and King St-Old Town Station. The A71 has a similar routing to the current 22A between Ballston Station and Shirlington Transit Center. The A71 provides a connection to King St-Old Town Station. - Route A66 runs between Culmore and Pentagon Station. The A66 has a similar routing to the current 22A between Shirlington Transit Center and Pentagon Station. Weekday midday, evening, and weekend trips will serve Pentagon City Station.
23A	A70, A11	<p>Two routes will replace the current 23A:</p> <ul style="list-style-type: none"> - Route A70 runs between Tysons Station and Potomac Yard Station. The A70 has a similar routings to the current 23A between Tysons Station and S Kenmore St/24th St S. The A70 provides a connection to Potomac Yard Station. - Route A11 runs between Huntington and Pentagon Station. The A11 has a similar routing to the current 23A between Mt Vernon Ave/Russell Rd and S Eads St/18th St S. The A11 provides connections to Braddock Rd Station, Old Town Alexandria and Huntington Station.

NEIGHBORHOOD PROFILE: BALLSTON, COURTHOUSE, CLARENDON & ROSSLYN

If you currently ride...	Your new route could be...	Description of Route(s)
23B	A70, A12, A11, DASH Routes 36A and 36B	<p>Four routes will replace the current 23B:</p> <ul style="list-style-type: none"> - Route A70 runs between Tysons and Potomac Yard Station. The A70 has a similar routing to the current 23B between Ballston Station and S Kenmore St/24th St S. The A70 provides a connection to Potomac Yard Station. - Route A12 runs between Ballston Station and Hunting Point. The A12 has a similar routing to the current 23B between Ballston Station and Shirlington Transit Center. The A12 provides connections to Braddock Rd Station, Old Town Alexandria and Hunting Point. - Route A11 runs between Huntington Station and Pentagon Station. The A11 has a similar routing to the current 23B between Mt Vernon Ave/Russell Rd and S Eads St/18th St S. The A11 provides connections to Braddock Rd Station, Old Town Alexandria and Huntington Station. - DASH Route 36A and Route 36B provide service between Shirlington Transit Center and W. Glebe Rd and Mt. Vernon Ave in Arlandria. Route 36A and Route 36B operate between Mark Center and Potomac Yard Station.
23T	A70, A12	<p>Two routes will replace the current 23T:</p> <ul style="list-style-type: none"> - Route A70 runs between Tysons Station and Potomac Yard Station. The A70 has a similar routing to the current 23T between Tysons Station and S Kenmore St/24th St S. The A70 provides a connection to Potomac Yard Station. - Route A12 runs between Ballston Station and Hunting Point. The A12 has a similar routing to the current 23T between Ballston Station and Shirlington Transit Center. The A12 provides connections to Braddock Rd Station, Old Town Alexandria and Hunting Point.
25B	A76	Route A76 has a similar routing to the current 25B between Mark Center Station and Ballston Station. The A76 provides a connection to Rosslyn Station via Fairfax Drive, 10th Street N and Arlington Blvd.
2A	F50	Route F50 has a similar routing to the current 2A, and extends to serve George Mason University via Vienna Station. The F50 provides connections to Vienna Station, Fairfax City and George Mason University.
38B	A58	Route A58 has a similar routing to the current 38B, and extends to serve Seven Corners Transit Center via Wilson Blvd.
3Y	ART Route 55	Arlington Transit Route 55 provides alternate service along Langston Blvd between East Falls Church Station and N Lynn St. Connection between Rosslyn Station and Farragut Square is available via a transfer to Route A58.
4B	F62	Route F62 has a similar routing to the current 4B, and extends to serve Dunn Loring Station via Arlington Blvd and Merrilee Dr.

NEIGHBORHOOD PROFILE: BLUEMONT, BARCROFT & DOUGLAS PARK



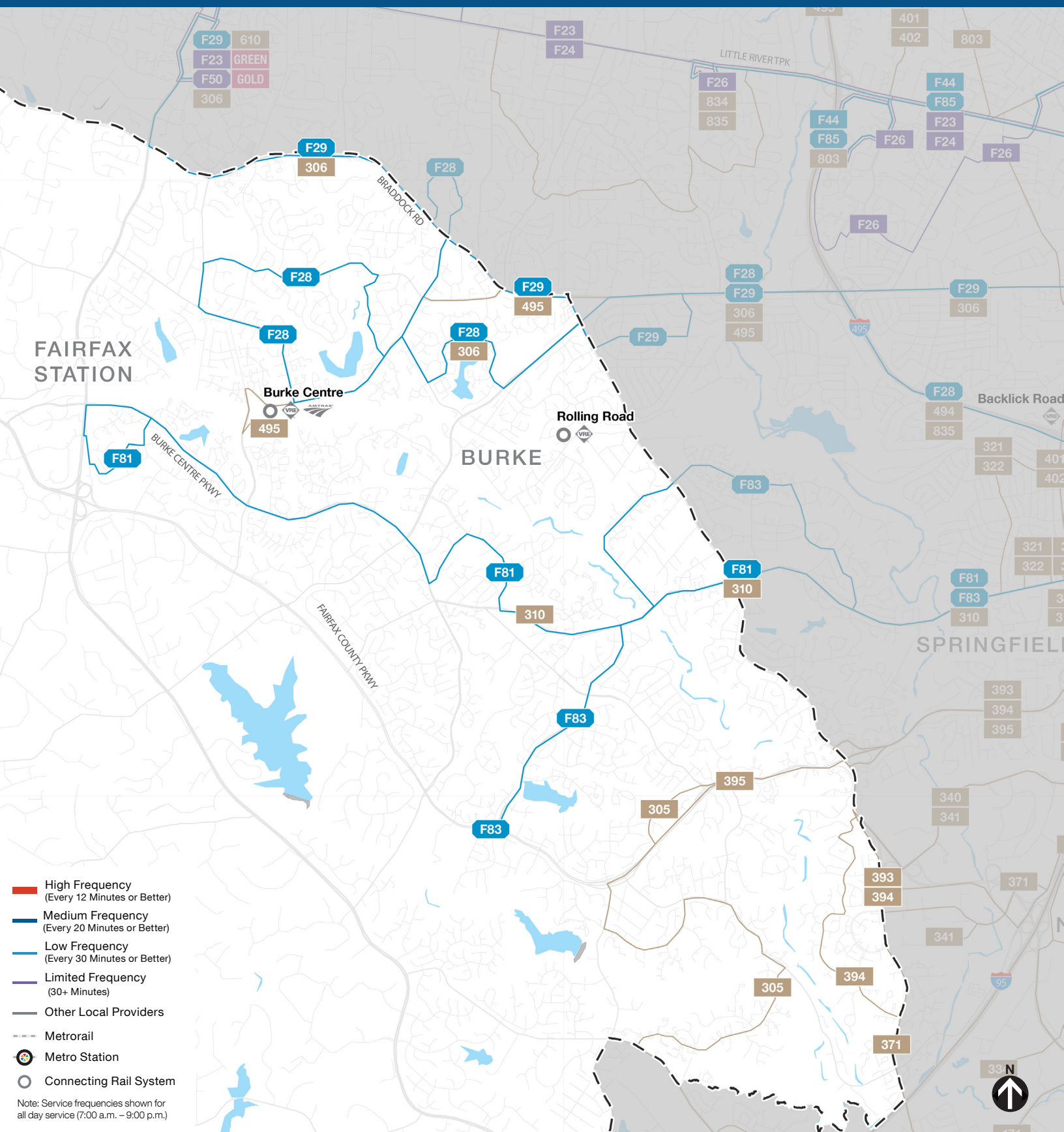
NEIGHBORHOOD PROFILE: BLUEMONT, BARCROFT & DOUGLAS PARK

If you currently ride...	Your new route could be...	Description of Route(s)
10B	A12	Route A12 has a similar routing to the current 10B.
16A	F44, A40	Two routes will replace current 16A: <ul style="list-style-type: none"> - Route F44 has a similar routing to the current 16A with a slight change at Pentagon Station using Army Navy Drive in both directions. - Route A40 runs between Skyline and National Landing. The A40 has a similar routing to the current 16A between Army Navy Dr/S Hayes St and Columbia Pike/S Jefferson St.
16C	A49, A66, F44, A40	Several routes will replace the current 16C: <ul style="list-style-type: none"> - Route A49 runs between Culmore and Metro Center. The A49 has a similar routing to the current 16C between Culmore and Columbia Pike/S Courthouse Rd during the peak period. The A49 provides connections to Farragut Square and Metro Center. - Route A66 runs between Culmore and Pentagon Station. The A66 connects current 16C riders from Culmore to Pentagon Station via Shirlington. - Route F44 runs between Annandale and Pentagon Station. The F44 has a similar routing to the current 16C between Baileys Crossroads and Pentagon Station. - Route A40 runs between Skyline and National Landing. The A40 has a similar routing to the current 16C between Army Navy Dr/S Hayes St and Columbia Pike/S Jefferson St. The A40 provides connections to Pentagon City Station and Crystal City Station.
16E	A40, F44, A66	Several routes will replace the current 16E: <ul style="list-style-type: none"> - Route A40 runs between Skyline and National Landing. The A40 has a similar routing to the current 16E between Columbia Pike/S Jefferson St and Pentagon City Station and provides connections to Crystal City. During the late night hours, the A40 provides a new connection to L'Enfant Plaza Station - Route F44 runs between Annandale and the Pentagon. The F44 has a similar routing to the current 16E between Baileys Cross Rd and the Pentagon. - Route A66 runs between Culmore and Pentagon Station. The A66 connects current 16E riders from Culmore to Pentagon Station via Shirlington.
16M	A40	Route A40 has a similar routing to the current 16M.
16Y	A49	Route A49 has a similar routing to the current 16Y, and extends to serve Culmore via Columbia Pike and Leesburg Pike.
1A	F60, A58, F62	Three routes will replace the current 1A: <ul style="list-style-type: none"> - Route F60 runs between Ballston Station and Fair Oaks Mall. The F60 has a similar routing to the current 1A between Arlington Blvd/Nutley St and Ballston Station. The F60 provides connections to Fairfax Government Center and Fair Oaks Mall. - Route A58 runs between Seven Corners Transit Center and Farragut Square. The A58 has a similar routing to the current 1A between Seven Corners and Ballston MU Station. The A58 provides connections to Clarendon Station, Court House Station, Rosslyn Station, Farragut West Station and Farragut Square. - Route F62 runs between Dunn Loring-Merrifield Station and Rosslyn Station. The F62 has a similar routing to the current 1A between Arlington Blvd/Gallows Rd and Seven Corners. The F62 provides connections to Dunn Loring-Merrifield Station, Court House Station and Rosslyn Station.
2A	F50	Route F50 has a similar routing to the current 2A, and extends to serve George Mason University via Vienna Station. The F50 provides connections to Vienna Station, Fairfax City and George Mason University.
38B	A58	Route A58 has a similar routing to the current 38B, and extends to serve Seven Corners Transit Center via Wilson Blvd.
4B	F62	Route F62 has a similar routing to the current 4B, and extends to serve Dunn Loring Station via Arlington Blvd and Merrilee Dr.

NEIGHBORHOOD PROFILE: BLUEMONT, BARCROFT & DOUGLAS PARK

If you currently ride...	Your new route could be...	Description of Route(s)
1B	F62, F60, A58	<p>Three routes will replace the current 1B:</p> <ul style="list-style-type: none"> - Route F62 runs between Dunn Loring-Merrifield Station and Rosslyn Station. The F62 has a similar routing to the current 1B between Dunn Loring-Merrifield Station and Seven Corners. The F62 provides connections to Court House Station and Rosslyn Station. - Route F60 runs between Ballston Station and Fair Oaks Mall. The F60 has a similar routing to the current 1B between Arlington Blvd/Jaguar Trail and Ballston-MU Station. The F60 provides connections to Fairfax Government Center and Fair Oaks Mall. - Route A58 runs between Seven Corners Transit Center and Farragut Square. The A58 has a similar routing to the current 1B between Seven Corners and Ballston MU Station. The A58 provides connections to Clarendon Station, Court House Station, Rosslyn Station, Farragut West Station and Farragut Square.
22A	A71, A66	<p>Two routes will replace the current 22A:</p> <ul style="list-style-type: none"> - Route A71 runs between Ballston Station and King St-Old Town Station. The A71 has a similar routing to the current 22A between Ballston Station and Shirlington Transit Center. The A71 provides a connection to King St-Old Town Station. - Route A66 runs between Culmore and Pentagon Station. The A66 has a similar routing to the current 22A between Shirlington Transit Center and Pentagon Station. Weekday midday, evening, and weekend trips will serve Pentagon City Station.
23A	A70, A11	<p>Two routes will replace the current 23A:</p> <ul style="list-style-type: none"> - Route A70 runs between Tysons Station and Potomac Yard Station. The A70 has a similar routings to the current 23A between Tysons Station and S Kenmore St/24th St S. The A70 provides a connection to Potomac Yard Station. - Route A11 runs between Huntington and Pentagon Station. The A11 has a similar routing to the current 23A between Mt Vernon Ave/Russell Rd and S Eads St/18th St S. The A11 provides connections to Braddock Rd Station, Old Town Alexandria and Huntington Station.
23B	A70, A12, A11, DASH 36A, 36B	<p>Four routes will replace the current 23B:</p> <ul style="list-style-type: none"> - Route A70 runs between Tysons and Potomac Yard Station. The A70 has a similar routing to the current 23B between Ballston Station and S Kenmore St/24th St S. The A70 provides a connection to Potomac Yard Station. - Route A12 runs between Ballston Station and Hunting Point. The A12 has a similar routing to the current 23B between Ballston Station and Shirlington Transit Center. The A12 provides connections to Braddock Rd Station, Old Town Alexandria and Hunting Point. - Route A11 runs between Huntington Station and Pentagon Station. The A11 has a similar routing to the current 23B between Mt Vernon Ave/Russell Rd and S Eads St/18th St S. The A11 provides connections to Braddock Rd Station, Old Town Alexandria and Huntington Station. - DASH Route 36A and Route 36B provide service between Shirlington Transit Center and W. Glebe Rd and Mt. Vernon Ave in Arlandria. Route 36A and Route 36B operate between Mark Center and Potomac Yard Station.
23T	A70, A12	<p>Two routes will replace the current 23T:</p> <ul style="list-style-type: none"> - Route A70 runs between Tysons Station and Potomac Yard Station. The A70 has a similar routing to the current 23T between Tysons Station and S Kenmore St/24th St S. The A70 provides a connection to Potomac Yard Station. - Route A12 runs between Ballston Station and Hunting Point. The A12 has a similar routing to the current 23T between Ballston Station and Shirlington Transit Center. The A12 provides connections to Braddock Rd Station, Old Town Alexandria and Hunting Point.
25B	A76	<p>Route A76 has a similar routing to the current 25B between Mark Center Station and Ballston Station. The A76 provides a connection to Rosslyn Station via Fairfax Drive, 10th Street N and Arlington Blvd.</p>

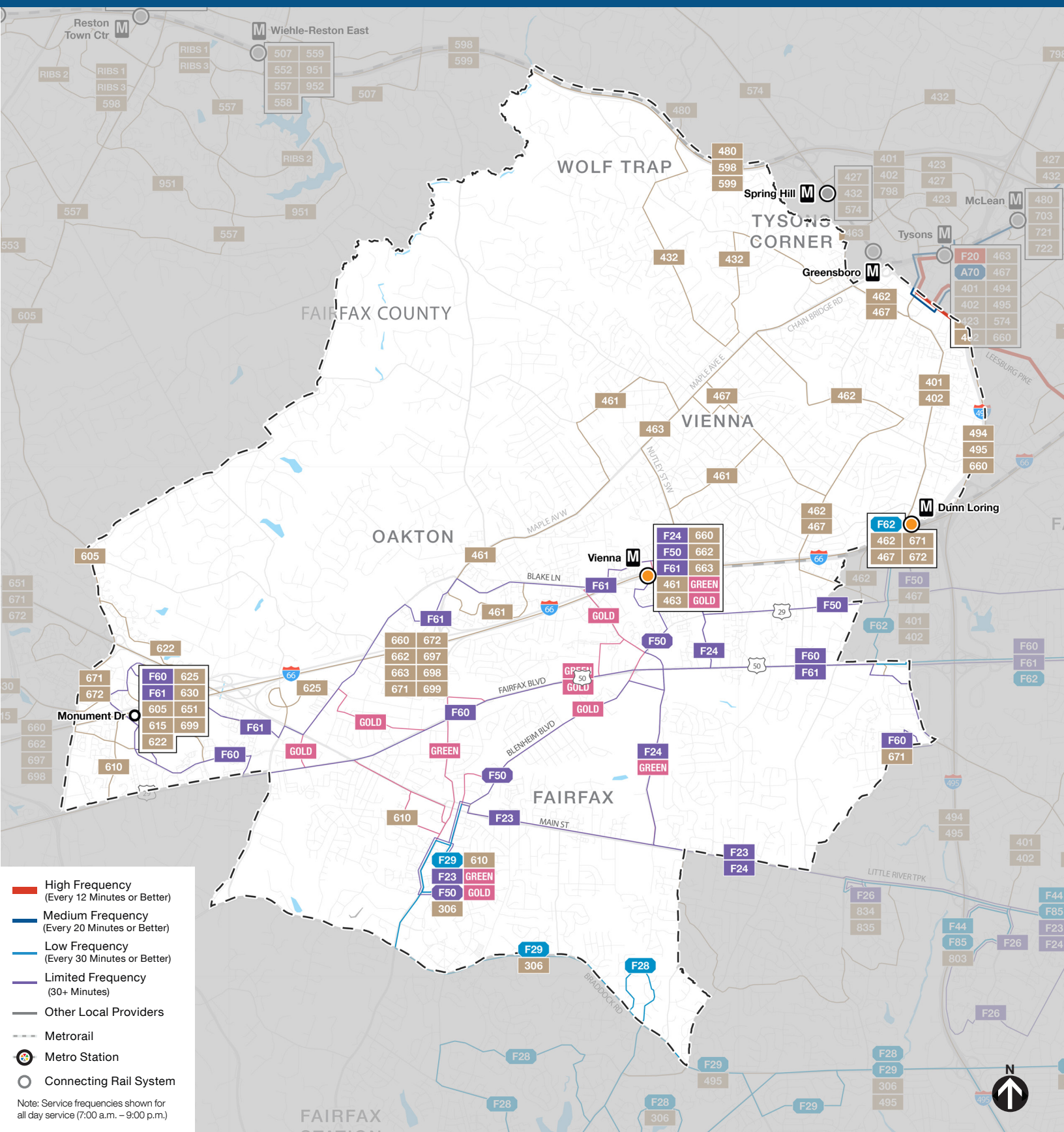
NEIGHBORHOOD PROFILE: BURKE & CLIFTON



NEIGHBORHOOD PROFILE: BURKE & CLIFTON

If you currently ride...	Your new route could be...	Description of Route(s)
17B	F28, F29	Two routes will replace the current 17B: <ul style="list-style-type: none"> - Route F28 runs between Kings Park West and Pentagon Station. The F28 has a similar routing to the current 17B between Zion Dr/Guinea Rd and Commonwealth Blvd and on portions of Braddock Rd between Danbury Forest Dr and Queensbury Ave. The F28 provides a connection to Kings Park West. - Route F29 runs between George Mason and Pentagon Station. The F29 has a similar routing to the current 17B between Pentagon Station and Braddock Rd/Backlick Rd.
17G	F29, F28	Two routes will replace the current 17G: <ul style="list-style-type: none"> - Route F29 runs between George Mason and the Pentagon. The F29 has a similar routing to the current 17G between George Mason University and the Capital Beltway. - Route F28 runs between Kings Park West and the Pentagon. The F28 has a similar routing to the current 17G between Braddock Rd/Southampton Dr and Pentagon Station. The F28 provides a connection to Kings Park West.
17K	F28	Route F28 has a similar routing to the current 17K, and extends to serve Olde Forge Park neighborhood via Twinbrook Rd.
18G	F83	Route F83 has a similar routing to the current 18G.
18J	Fairfax Connector 310, 321, 322	Three routes provide an alternative to the current 18J: <ul style="list-style-type: none"> - Fairfax Connector Route 310 has a similar routing to the current 18J on Old Keene Mill Rd between Commerce St (Springfield Plaza) and Rolling Valley P&R. - Fairfax Connector Route 321 (to Franconia-Springfield Station) and Route 322 (from Franconia-Springfield Station) provide connections to portions of Backlick Rd and Commerce St on the current 18J and rail connections at Franconia-Springfield Station.
18P	F81	Route F81 has a similar routing to the current 18P.

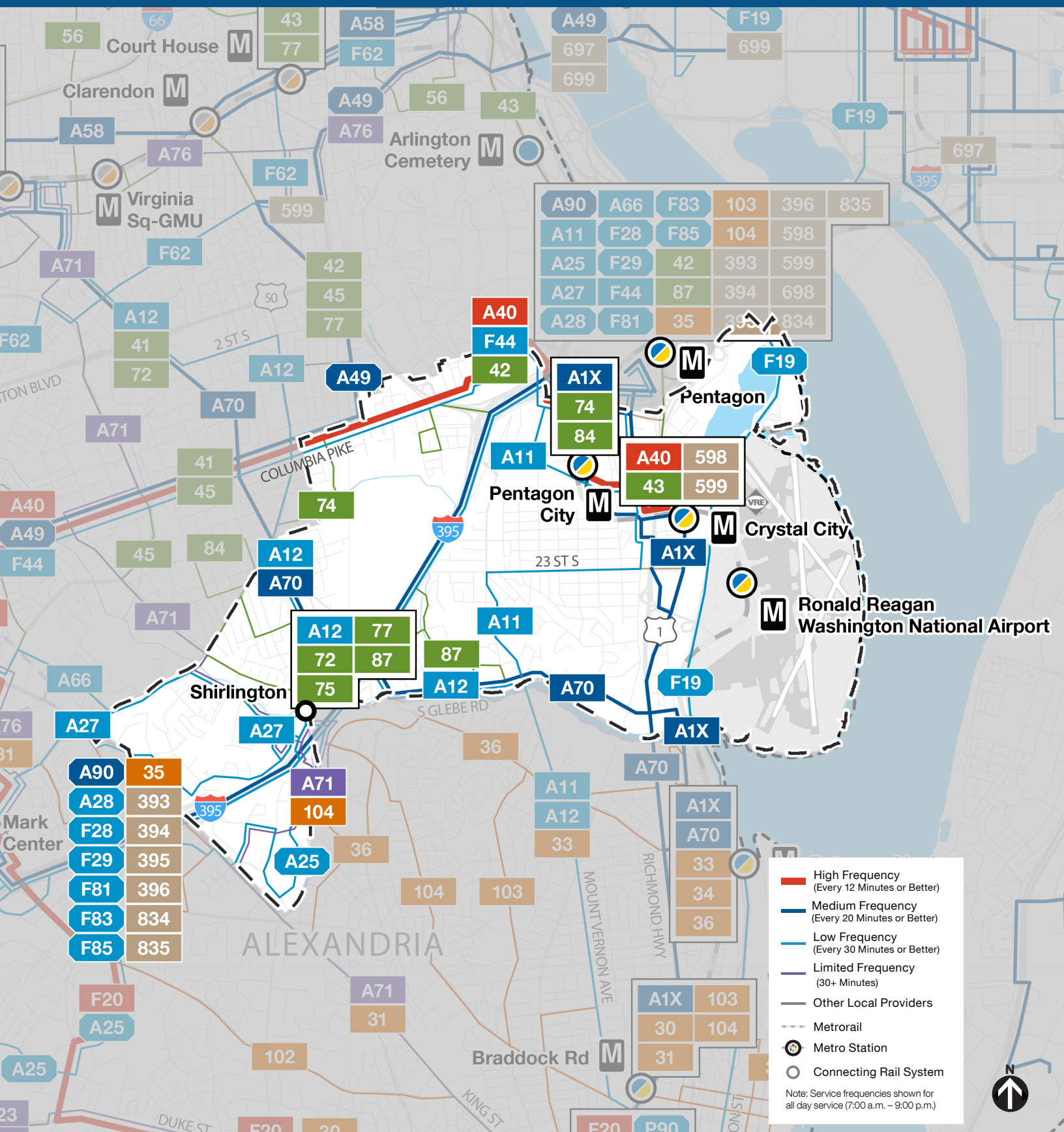
NEIGHBORHOOD PROFILE: CITY OF FAIRFAX & VIENNA



NEIGHBORHOOD PROFILE: CITY OF FAIRFAX & VIENNA

If you currently ride...	Your new route could be...	Description of Route(s)
17G	F29, F28	Two routes will replace the current 17G: <ul style="list-style-type: none"> - Route F29 runs between George Mason and the Pentagon. The F29 has a similar routing to the current 17G between George Mason University and the Capital Beltway. - Route F28 runs between Kings Park West and the Pentagon. The F28 has a similar routing to the current 17G between Braddock Rd/Southampton Dr and Pentagon Station. The F28 provides a connection to Kings Park West.
1A	F60, A58, F62	Three routes will replace the current 1A: <ul style="list-style-type: none"> - Route F60 runs between Ballston Station and Fair Oaks Mall. The F60 has a similar routing to the current 1A between Arlington Blvd/Nutley St and Ballston Station. The F60 provides connections to Fairfax Government Center and Fair Oaks Mall. - Route A58 runs between Seven Corners Transit Center and Farragut Square. The A58 has a similar routing to the current 1A between Seven Corners and Ballston MU Station. The A58 provides connections to Clarendon Station, Court House Station, Rosslyn Station, Farragut West Station and Farragut Square. - Route F62 runs between Dunn Loring-Merrifield Station and Rosslyn Station. The F62 has a similar routing to the current 1A between Arlington Blvd/Gallows Rd and Seven Corners. The F62 provides connections to Dunn Loring-Merrifield Station, Court House Station and Rosslyn Station.
1C	F60, F62	Two routes will replace the current 1C: <ul style="list-style-type: none"> - Route F60 runs between Ballston Station and Fair Oaks Mall. The F60 has a similar routing to the current 1C between Gallows Rd/Arlington Blvd and Fair Oaks Mall. The F60 provides connections to Seven Corners and Ballston Station. - Route F62 runs between Dunn Loring-Merrifield Station and Rosslyn Station. The F62 has a similar routing to the current 1B between Dunn Loring-Merrifield Station and Seven Corners. The F62 provides connections to Court House Station and Rosslyn Station.
28A	F20	Route F20 has a similar routing to the current 28A.
29K	F23, F24	Two routes will replace the current 29K: <ul style="list-style-type: none"> - Route F23 runs between George Mason University and King St-Old Town. The F23 has a similar routing to the current 29K. - Route F24 runs between Vienna Station and King St-Old Town. The F24 has a similar routing to the current 29K between Little River Tpke/Pickets Rd and King St. The F24 provides connections to Vienna Station.
29N	F24, F23	Two routes will replace the current 29N: <ul style="list-style-type: none"> - Route F24 has a similar routing to the current 29N. - Route F23 has a similar routing to the current 29N between Little River Tpke/Pickets Rd and King St. The F23 provides connections to George Mason University.
2B	F50, F61, F60	Three routes will replace the current 2B: <ul style="list-style-type: none"> - Route F50 runs between Ballston Station and George Mason University. The F50 has a similar routing to the current 2B between Ballston Station and Route 29/Blake Ln. The F50 provides connections to Vienna Station, Fairfax City and George Mason University. - Route F61 has a similar routing between Fair Oaks Mall and Vienna Station along Blake Ln and Jermantown Rd. The F61 continues from Vienna Station to Ballston Station via Arlington Blvd. - Route F60 runs between Ballston Station and Fair Oaks Mall. The F60 provides a direct connection for current 2B riders between Ballston Station and Fair Oaks Mall via Arlington Blvd.

NEIGHBORHOOD PROFILE: CRYSTAL/ PENTAGON CITIES & SHIRLINGTON



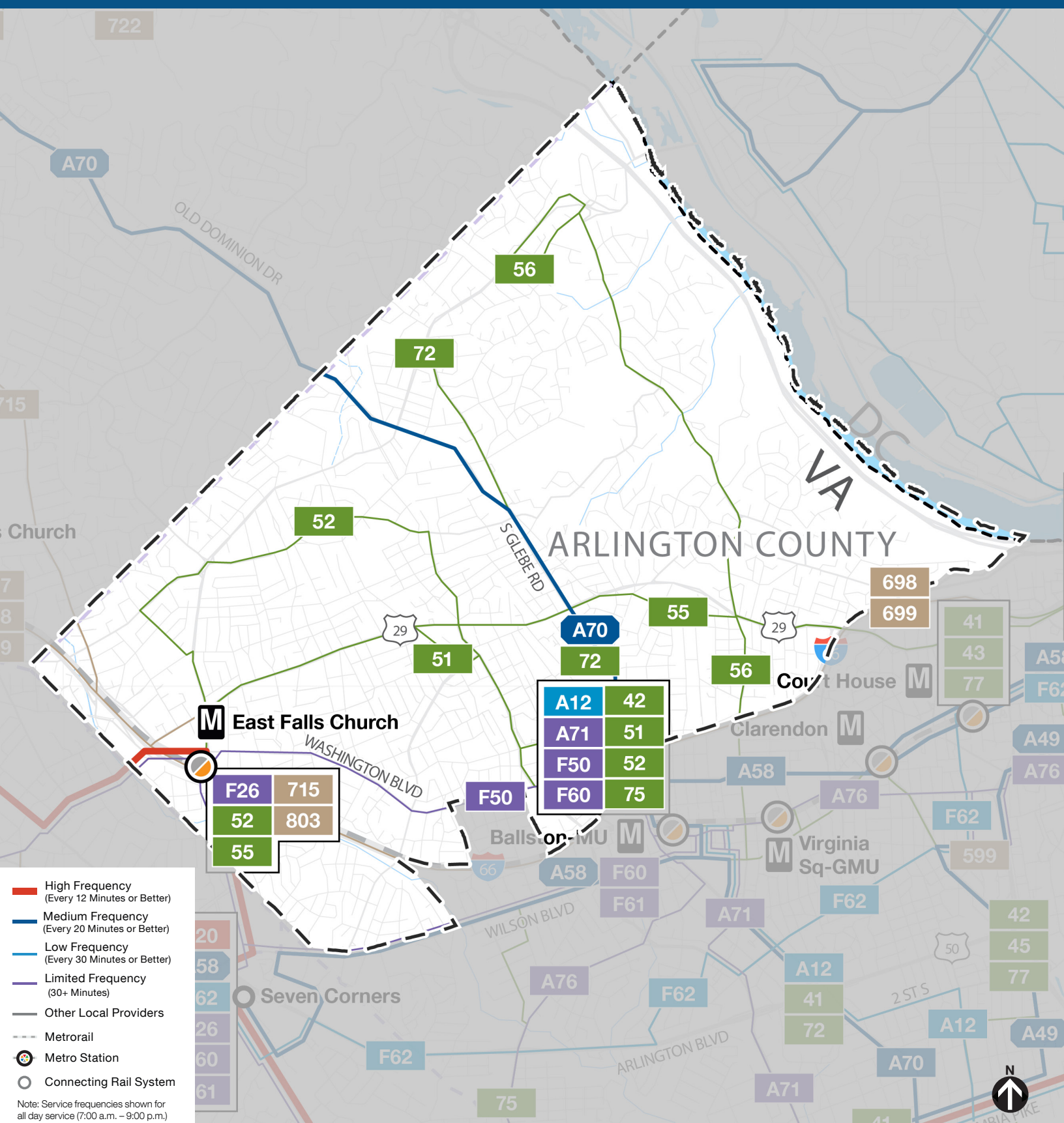
NEIGHBORHOOD PROFILE: CRYSTAL/ PENTAGON CITIES & SHIRLINGTON

If you currently ride...	Your new route could be...	Description of Route(s)
10A	A11	Route A11 has a similar routing to the current 10A.
10B	A12	Route A12 has a similar routing to the current 10B.
16A	F44, A40	Two routes will replace current 16A: <ul style="list-style-type: none"> - Route F44 has a similar routing to the current 16A with a slight change at Pentagon Station using Army Navy Drive in both directions. - Route A40 runs between Skyline and National Landing. The A40 has a similar routing to the current 16A between Army Navy Dr/S Hayes St and Columbia Pike/S Jefferson St.
16C	A49, A66, F44, A40	Several routes will replace the current 16C: <ul style="list-style-type: none"> - Route A49 runs between Culmore and Metro Center. The A49 has a similar routing to the current 16C between Culmore and Columbia Pike/S Courthouse Rd during the peak period. The A49 provides connections to Farragut Square and Metro Center. - Route A66 runs between Culmore and Pentagon Station. The A66 connects current 16C riders from Culmore to Pentagon Station via Shirlington. - Route F44 runs between Annandale and Pentagon Station. The F44 has a similar routing to the current 16C between Baileys Crossroads and Pentagon Station. - Route A40 runs between Skyline and National Landing. The A40 has a similar routing to the current 16C between Army Navy Dr/S Hayes St and Columbia Pike/S Jefferson St. The A40 provides connections to Pentagon City Station and Crystal City Station.
16E	A40, F44, A66	Several routes will replace the current 16E: <ul style="list-style-type: none"> - Route A40 runs between Skyline and National Landing. The A40 has a similar routing to the current 16E between Columbia Pike/S Jefferson St and Pentagon City Station and provides connections to Crystal City. During the late night hours, the A40 provides a new connection to L'Enfant Plaza Station - Route F44 runs between Annandale and the Pentagon. The F44 has a similar routing to the current 16E between Baileys Cross Rd and the Pentagon. - Route A66 runs between Culmore and Pentagon Station. The A66 connects current 16E riders from Culmore to Pentagon Station via Shirlington.
16M	A40	Route A40 has a similar routing to the current 16M.
16Y	A49	Route A49 has a similar routing to the current 16Y, and extends to serve Culmore via Columbia Pike and Leesburg Pike.
22A	A71, A66	Two routes will replace the current 22A: <ul style="list-style-type: none"> - Route A71 runs between Ballston Station and King St-Old Town Station. The A71 has a similar routing to the current 22A between Ballston Station and Shirlington Transit Center. The A71 provides a connection to King St-Old Town Station. - Route A66 runs between Culmore and Pentagon Station. The A66 has a similar routing to the current 22A between Shirlington Transit Center and Pentagon Station. Weekday midday, evening, and weekend trips will serve Pentagon City Station.

NEIGHBORHOOD PROFILE: CRYSTAL/ PENTAGON CITIES & SHIRLINGTON

If you currently ride...	Your new route could be...	Description of Route(s)
22F	A25, A66, F20	<p>Three routes will replace the current 22F:</p> <ul style="list-style-type: none"> - Route A25 runs between Landmark Transit Center and Pentagon Station. The A25 has a similar routing to the current 22F between N Van Dorn St/W Braddock Rd and Pentagon Station. The A25 provides a connection to Landmark. - Route A66 runs between Culmore and Pentagon Station. The A66 has a similar routing to the current 22F between Leesburg Pike/Carlin Springs Rd and Leesburg Pike/S George Mason Dr. The A66 provides connections to Bailey's Crossroads and Culmore. - Route F20 runs between Tysons Station and King St-Old Town Station. The F20 has a similar routing to the current 22F between Carlin Springs Rd/Seminary Rd and Filmore Ave/N Beauregard St. The F20 provides connections to Tysons Corner Center, East Falls Church Station, Seven Corners, Bailey's Crossroads and King St-Old Town Station.
23A	A70, A11	<p>Two routes will replace the current 23A:</p> <ul style="list-style-type: none"> - Route A70 runs between Tysons Station and Potomac Yard Station. The A70 has a similar routing to the current 23A between Tysons Station and S Kenmore St/24th St S. The A70 provides a connection to Potomac Yard Station. - Route A11 runs between Huntington and Pentagon Station. The A11 has a similar routing to the current 23A between Mt Vernon Ave/Russell Rd and S Eads St/18th St S. The A11 provides connections to Braddock Rd Station, Old Town Alexandria and Huntington Station.
23B	A70, A12, A11, DASH 36A, 36B	<p>Four routes will replace the current 23B:</p> <ul style="list-style-type: none"> - Route A70 runs between Tysons and Potomac Yard Station. The A70 has a similar routing to the current 23B between Ballston Station and S Kenmore St/24th St S. The A70 provides a connection to Potomac Yard Station. - Route A12 runs between Ballston Station and Hunting Point. The A12 has a similar routing to the current 23B between Ballston Station and Shirlington Transit Center. The A12 provides connections to Braddock Rd Station, Old Town Alexandria and Hunting Point. - Route A11 runs between Huntington Station and Pentagon Station. The A11 has a similar routing to the current 23B between Mt Vernon Ave/Russell Rd and S Eads St/18th St S. The A11 provides connections to Braddock Rd Station, Old Town Alexandria and Huntington Station. - DASH Route 36A and Route 36B provide service between Shirlington Transit Center and W. Glebe Rd and Mt. Vernon Ave in Arlington. Route 36A and Route 36B operate between Mark Center and Potomac Yard Station.
23T	A70, A12	<p>Two routes will replace the current 23T:</p> <ul style="list-style-type: none"> - Route A70 runs between Tysons Station and Potomac Yard Station. The A70 has a similar routing to the current 23T between Tysons Station and S Kenmore St/24th St S. The A70 provides a connection to Potomac Yard Station. - Route A12 runs between Ballston Station and Hunting Point. The A12 has a similar routing to the current 23T between Ballston Station and Shirlington Transit Center. The A12 provides connections to Braddock Rd Station, Old Town Alexandria and Hunting Point.
7A	A27	Route A27 has a similar routing to the current 7A.
MW1	A1X	Route A1X has a similar routing to the current Metroway.

NEIGHBORHOOD PROFILE: EAST FALLS CHURCH, DOMINION HILLS & GARDEN CITY



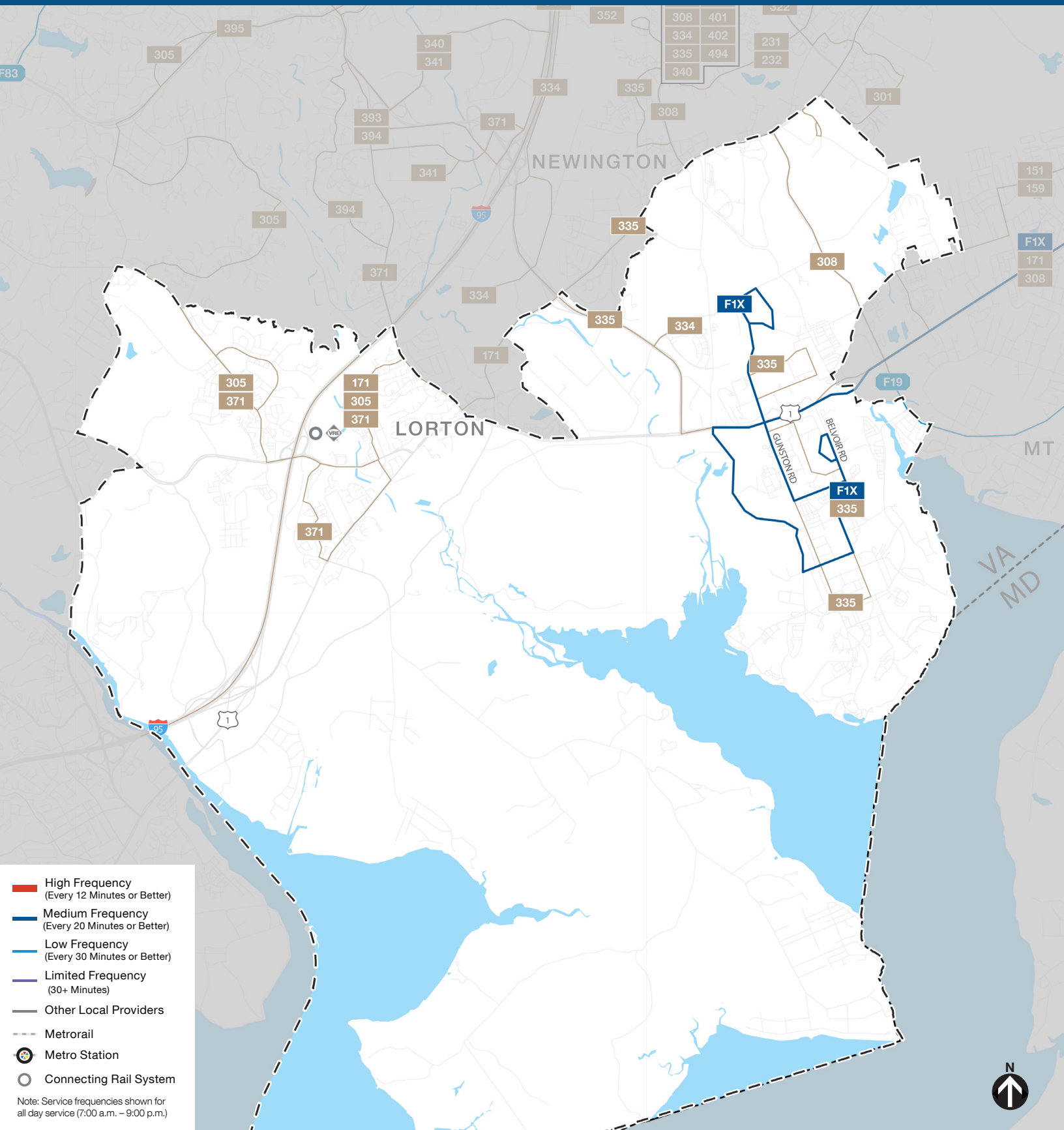
NEIGHBORHOOD PROFILE: EAST FALLS CHURCH, DOMINION HILLS & GARDEN CITY

If you currently ride...	Your new route could be...	Description of Route(s)
1A	F60, A58, F62	<p>Three routes will replace the current 1A:</p> <ul style="list-style-type: none"> - Route F60 runs between Ballston Station and Fair Oaks Mall. The F60 has a similar routing to the current 1A between Arlington Blvd/Nutley St and Ballston Station. The F60 provides connections to Fairfax Government Center and Fair Oaks Mall. - Route A58 runs between Seven Corners Transit Center and Farragut Square. The A58 has a similar routing to the current 1A between Seven Corners and Ballston MU Station. The A58 provides connections to Clarendon Station, Court House Station, Rosslyn Station, Farragut West Station and Farragut Square. - Route F62 runs between Dunn Loring-Merrifield Station and Rosslyn Station. The F62 has a similar routing to the current 1A between Arlington Blvd/Gallows Rd and Seven Corners. The F62 provides connections to Dunn Loring-Merrifield Station, Court House Station and Rosslyn Station.
1B	F62, F60, A58	<p>Three routes will replace the current 1B:</p> <ul style="list-style-type: none"> - Route F62 runs between Dunn Loring-Merrifield Station and Rosslyn Station. The F62 has a similar routing to the current 1B between Dunn Loring-Merrifield Station and Seven Corners. The F62 provides connections to Court House Station and Rosslyn Station. - Route F60 runs between Ballston Station and Fair Oaks Mall. The F60 has a similar routing to the current 1B between Arlington Blvd/Jaguar Trail and Ballston-MU Station. The F60 provides connections to Fairfax Government Center and Fair Oaks Mall. - Route A58 runs between Seven Corners Transit Center and Farragut Square. The A58 has a similar routing to the current 1B between Seven Corners and Ballston MU Station. The A58 provides connections to Clarendon Station, Court House Station, Rosslyn Station, Farragut West Station and Farragut Square.
23A	A70, A11	<p>Two routes will replace the current 23A:</p> <ul style="list-style-type: none"> - Route A70 runs between Tysons Station and Potomac Yard Station. The A70 has a similar routing to the current 23A between Tysons Station and S Kenmore St/24th St S. The A70 provides a connection to Potomac Yard Station. - Route A11 runs between Huntington and Pentagon Station. The A11 has a similar routing to the current 23A between Mt Vernon Ave/Russell Rd and S Eads St/18th St S. The A11 provides connections to Braddock Rd Station, Old Town Alexandria and Huntington Station.
23T	A70, A12	<p>Two routes will replace the current 23T:</p> <ul style="list-style-type: none"> - Route A70 runs between Tysons Station and Potomac Yard Station. The A70 has a similar routing to the current 23T between Tysons Station and S Kenmore St/24th St S. The A70 provides a connection to Potomac Yard Station. - Route A12 runs between Ballston Station and Hunting Point. The A12 has a similar routing to the current 23T between Ballston Station and Shirlington Transit Center. The A12 provides connections to Braddock Rd Station, Old Town Alexandria and Hunting Point.
26A	F26, F44, F20	<p>Three routes will replace the current 26A:</p> <ul style="list-style-type: none"> - Route F26 has a similar routing to the current 26A. - Route F44 runs between Columbia Pike and Pentagon Station. The F44 has a similar routing to the current 26A between John Marr Dr/Tom Davis Dr and Tyler St/Columbia Pike. The F44 provides connections to Annandale, Bailey's Crossroads, and Pentagon Station. - Route F20 runs between Tysons Station and King St-Old Town Station. The F20 has a similar routing to the current 26A between Leesburg Pike/Glenmore Dr and East Falls Church Station. The F20 provides connections to Tysons Station, West Falls Church Station, Seven Corners, Bailey's Crossroads and King St-Old Town Station.
28A	F20	Route F20 has a similar routing to the current 28A.
2A	F50	Route F50 has a similar routing to the current 2A, and extends to serve George Mason University via Vienna Station. The F50 provides connections to Vienna Station, Fairfax City and George Mason University.

NEIGHBORHOOD PROFILE: EAST FALLS CHURCH, DOMINION HILLS & GARDEN CITY

If you currently ride...	Your new route could be...	Description of Route(s)
3F		<p>Route 3F service will be discontinued.</p> <p>For alternate service from Downtown DC to East Falls Church Station (weekday mornings), customers can Board D10 (Foggy Bottom) from Franklin Square to I St NW and 18th NW, transfer to A58 (Ballston or Seven Corners) from I St and 18th NW to Rosslyn Station; and transfer to ART route 55 for continued service from Rosslyn to East Falls Church Station. Alternatively, customers can board an Orange or Silver Line train from McPherson Square to East Falls Church Station.</p>
3Y	ART Route 55	Arlington Transit Route 55 provides alternate service along Langston Blvd between East Falls Church Station and N Lynn St. Connection between Rosslyn Station and Farragut Square is available via a transfer to Route A58.

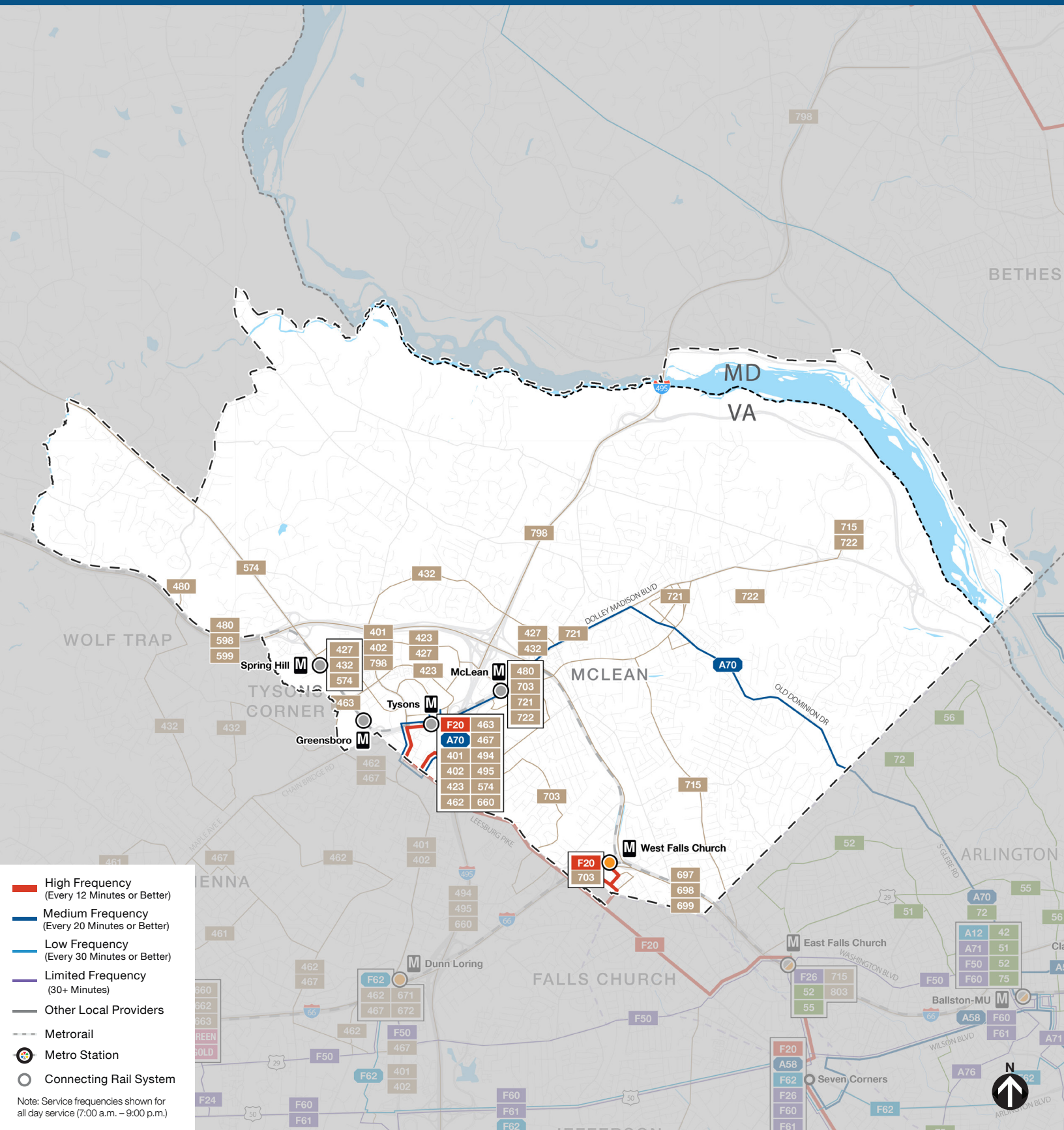
NEIGHBORHOOD PROFILE: LORTON & FORT BELVOIR



NEIGHBORHOOD PROFILE: LORTON & FORT BELVOIR

If you currently ride...	Your new route could be...	Description of Route(s)
11Y	F19	Route F19 has a similar routing to the current 11Y.
REX	F1X	Route F1X has a similar routing to the current REX.

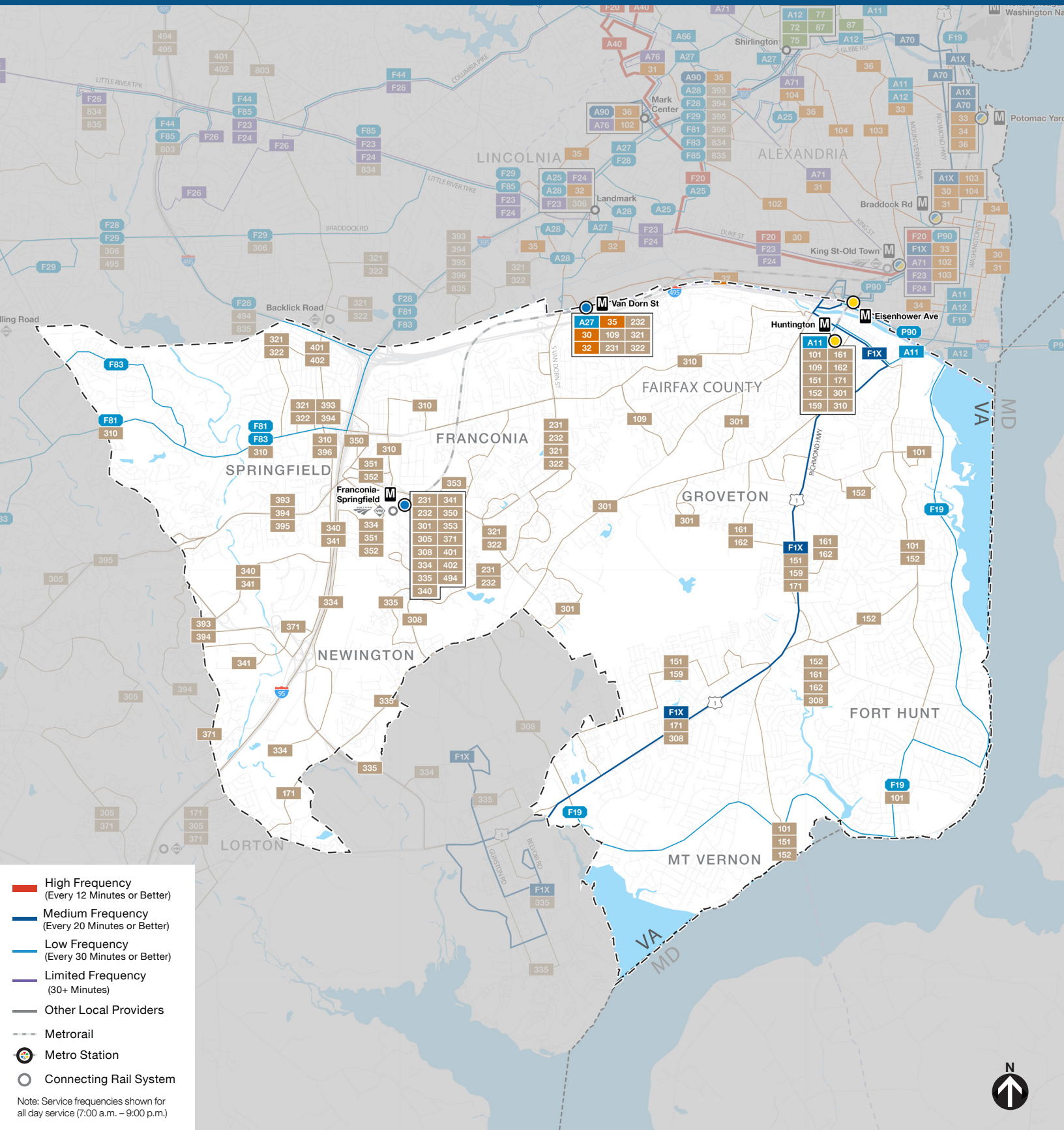
NEIGHBORHOOD PROFILE: MCLEAN & TYSONS CORNER



NEIGHBORHOOD PROFILE: MCLEAN & TYSONS CORNER

If you currently ride...	Your new route could be...	Description of Route(s)
23A	A70, A11	Two routes will replace the current 23A: - Route A70 runs between Tysons Station and Potomac Yard Station. The A70 has a similar routing to the current 23A between Tysons Station and S Kenmore St/24th St S. The A70 provides a connection to Potomac Yard Station. - Route A11 runs between Huntington and Pentagon Station. The A11 has a similar routing to the current 23A between Mt Vernon Ave/Russell Rd and S Eads St/18th St S. The A11 provides connections to Braddock Rd Station, Old Town Alexandria and Huntington Station.
23T	A70, A12	Two routes will replace the current 23T: - Route A70 runs between Tysons Station and Potomac Yard Station. The A70 has a similar routing to the current 23T between Tysons Station and S Kenmore St/24th St S. The A70 provides a connection to Potomac Yard Station. - Route A12 runs between Ballston Station and Hunting Point. The A12 has a similar routing to the current 23T between Ballston Station and Shirlington Transit Center. The A12 provides connections to Braddock Rd Station, Old Town Alexandria and Hunting Point.
28A	F20	Route F20 has a similar routing to the current 28A.

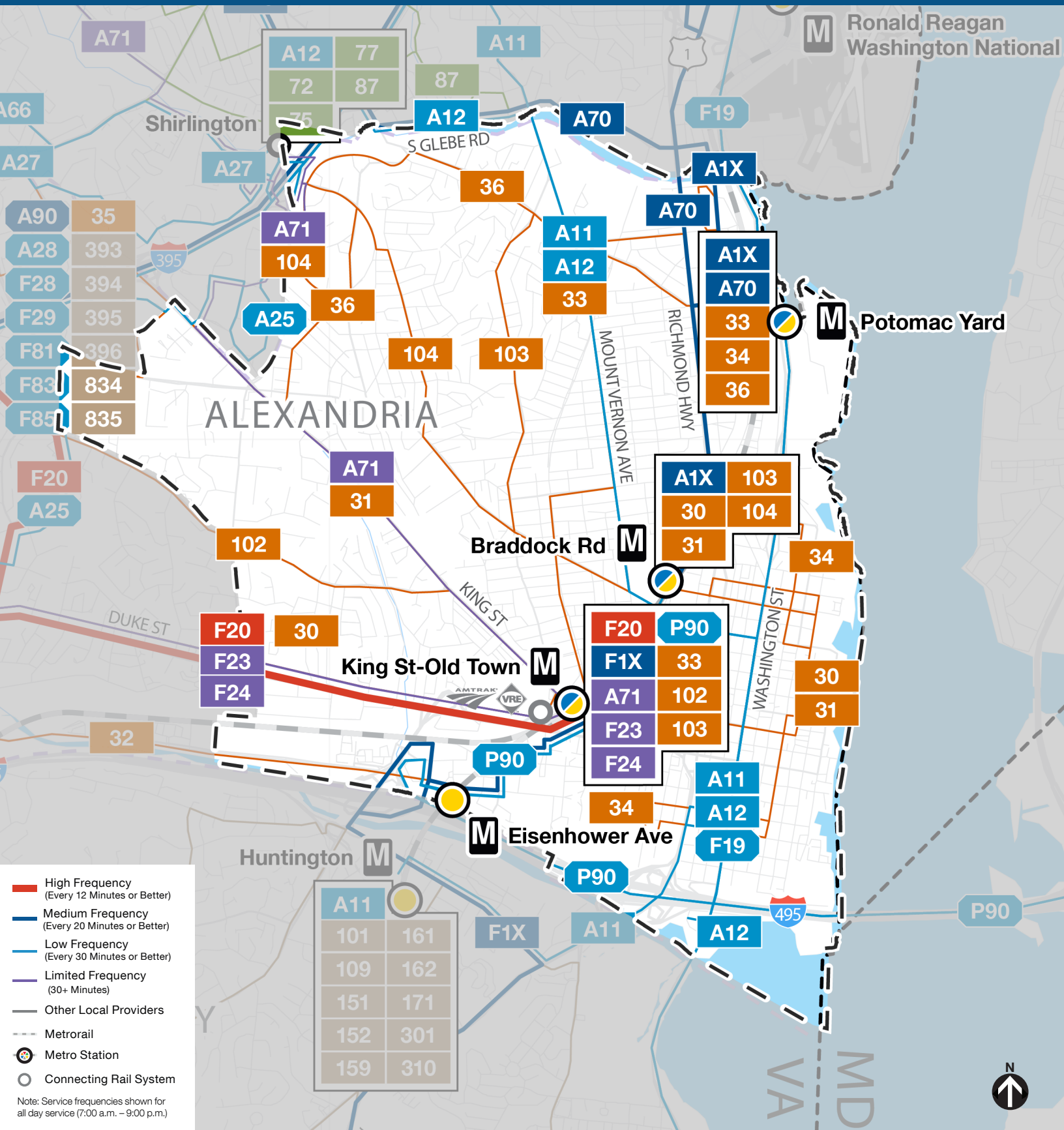
NEIGHBORHOOD PROFILE: MOUNT VERNON, SPRINGFIELD, FRANCONIA & HUNTINGTON



NEIGHBORHOOD PROFILE: MOUNT VERNON, SPRINGFIELD, FRANCONIA & HUNTINGTON

If you currently ride...	Your new route could be...	Description of Route(s)
10A	A11	Route A11 has a similar routing to the current 10A.
11Y	F19	Route F19 provides the same route, frequency, and hours of operation as the current 11Y.
17G	F29, F28	Two routes will replace the current 17G: <ul style="list-style-type: none"> - Route F29 runs between George Mason and the Pentagon. The F29 has a similar routing to the current 17G between George Mason University and the Capital Beltway. - Route F28 runs between Kings Park West and the Pentagon. The F28 has a similar routing to the current 17G between Braddock Rd/Southampton Dr and Pentagon Station. The F28 provides a connection to Kings Park West.
17K	F28	Route F28 has a similar routing to the current 17K, and extends to serve Olde Forge Park neighborhood via Twinbrook Rd.
18G	F83	Route F83 has a similar routing to the current 18G.
18J	Fairfax Connector 310, 321, 322	Three routes provide an alternative to the current 18J: <ul style="list-style-type: none"> - Fairfax Connector Route 310 has a similar routing to the current 18J on Old Keene Mill Rd between Commerce St (Springfield Plaza) and Rolling Valley P&R. - Fairfax Connector Route 321 (to Franconia-Springfield Station) and Route 322 (from Franconia-Springfield Station) provide connections to portions of Backlick Rd and Commerce St on the current 18J and rail connections at Franconia-Springfield Station.
18P	F81	Route F81 has a similar routing to the current 18P.
REX	F1X	Route F1X has a similar routing to the current REX.

NEIGHBORHOOD PROFILE: OLD TOWN, POTOMAC YARD & EISENHOWER EAST



NEIGHBORHOOD PROFILE: OLD TOWN, POTOMAC YARD & EISENHOWER EAST

If you currently ride...	Your new route could be...	Description of Route(s)
10A	A11	Route A11 has a similar routing to the current 10A.
10B	A12	Route A12 has a similar routing to the current 10B.
11Y	F19	Route F19 provides the same route, frequency, and hours of operation as the current 11Y.
22A	A71, A66	Two routes will replace the current 22A: <ul style="list-style-type: none"> - Route A71 runs between Ballston Station and King St-Old Town Station. The A71 has a similar routing to the current 22A between Ballston Station and Shirlington Transit Center. The A71 provides a connection to King St-Old Town Station. - Route A66 runs between Culmore and Pentagon Station. The A66 has a similar routing to the current 22A between Shirlington Transit Center and Pentagon Station. Weekday midday, evening, and weekend trips will serve Pentagon City Station.
22F	A25, A66, F20	Three routes will replace the current 22F: <ul style="list-style-type: none"> - Route A25 runs between Landmark Transit Center and Pentagon Station. The A25 has a similar routing to the current 22F between N Van Dorn St/W Braddock Rd and Pentagon Station. The A25 provides a connection to Landmark. - Route A66 runs between Culmore and Pentagon Station. The A66 has a similar routing to the current 22F between Leesburg Pike/Carlin Springs Rd and Leesburg Pike/S George Mason Dr. The A66 provides connections to Bailey's Crossroads and Culmore. - Route F20 runs between Tysons Station and King St-Old Town Station. The F20 has a similar routing to the current 22F between Carlin Springs Rd/Seminary Rd and Filmore Ave/N Beauregard St. The F20 provides connections to Tysons Corner Center, East Falls Church Station, Seven Corners, Bailey's Crossroads and King St-Old Town Station.
23A	A70, A11	Two routes will replace the current 23A: <ul style="list-style-type: none"> - Route A70 runs between Tysons Station and Potomac Yard Station. The A70 has a similar routings to the current 23A between Tysons Station and S Kenmore St/24th St S. The A70 provides a connection to Potomac Yard Station. - Route A11 runs between Huntington and Pentagon Station. The A11 has a similar routing to the current 23A between Mt Vernon Ave/Russell Rd and S Eads St/18th St S. The A11 provides connections to Braddock Rd Station, Old Town Alexandria and Huntington Station.
23B	A70, A12, A11, DASH 36A, 36B	Four routes will replace the current 23B: <ul style="list-style-type: none"> - Route A70 runs between Tysons and Potomac Yard Station. The A70 has a similar routing to the current 23B between Ballston Station and S Kenmore St/24th St S. The A70 provides a connection to Potomac Yard Station. - Route A12 runs between Ballston Station and Hunting Point. The A12 has a similar routing to the current 23B between Ballston Station and Shirlington Transit Center. The A12 provides connections to Braddock Rd Station, Old Town Alexandria and Hunting Point. - Route A11 runs between Huntington Station and Pentagon Station. The A11 has a similar routing to the current 23B between Mt Vernon Ave/Russell Rd and S Eads St/18th St S. The A11 provides connections to Braddock Rd Station, Old Town Alexandria and Huntington Station. - DASH Route 36A and Route 36B provide service between Shirlington Transit Center and W. Glebe Rd and Mt. Vernon Ave in Arlandria. Route 36A and Route 36B operate between Mark Center and Potomac Yard Station.

NEIGHBORHOOD PROFILE: OLD TOWN, POTOMAC YARD & EISENHOWER EAST

If you currently ride...	Your new route could be...	Description of Route(s)
23T	A70, A12	Two routes will replace the current 23T: <ul style="list-style-type: none"> - Route A70 runs between Tysons Station and Potomac Yard Station. The A70 has a similar routing to the current 23T between Tysons Station and S Kenmore St/24th St S. The A70 provides a connection to Potomac Yard Station. - Route A12 runs between Ballston Station and Hunting Point. The A12 has a similar routing to the current 23T between Ballston Station and Shirlington Transit Center. The A12 provides connections to Braddock Rd Station, Old Town Alexandria and Hunting Point.
28A	F20	Route F20 has a similar routing to the current 28A.
29K	F23, F24	Two routes will replace the current 29K: <ul style="list-style-type: none"> - Route F23 runs between George Mason University and King St-Old Town. The F23 has a similar routing to the current 29K. - Route F24 runs between Vienna Station and King St-Old Town. The F24 has a similar routing to the current 29K between Little River Tpke/Pickets Rd and King St. The F24 provides connections to Vienna Station.
29N	F24, F23	Two routes will replace the current 29N: <ul style="list-style-type: none"> - Route F24 has a similar routing to the current 29N. - Route F23 has a similar routing to the current 29N between Little River Tpke/Pickets Rd and King St. The F23 provides connections to George Mason University.
MW1	A1X	Route A1X has a similar routing to the current Metroway.
NH2	P90, P94	Two routes will replace the current NH2: <ul style="list-style-type: none"> - The P90 will replace the NH2. The P90 has a similar routing to the current NH2, and extends to serve Suitland Station via Oxon Hill Rd and St Barnabas Rd. - Route P94 runs between Suitland Station and National Harbor via Southern Ave Station. The P94 uses similar alignments as the current NH2 between Oxon Hill Park & Ride and National Harbor.
REX	F1X	Route F1X has a similar routing to the current REX.