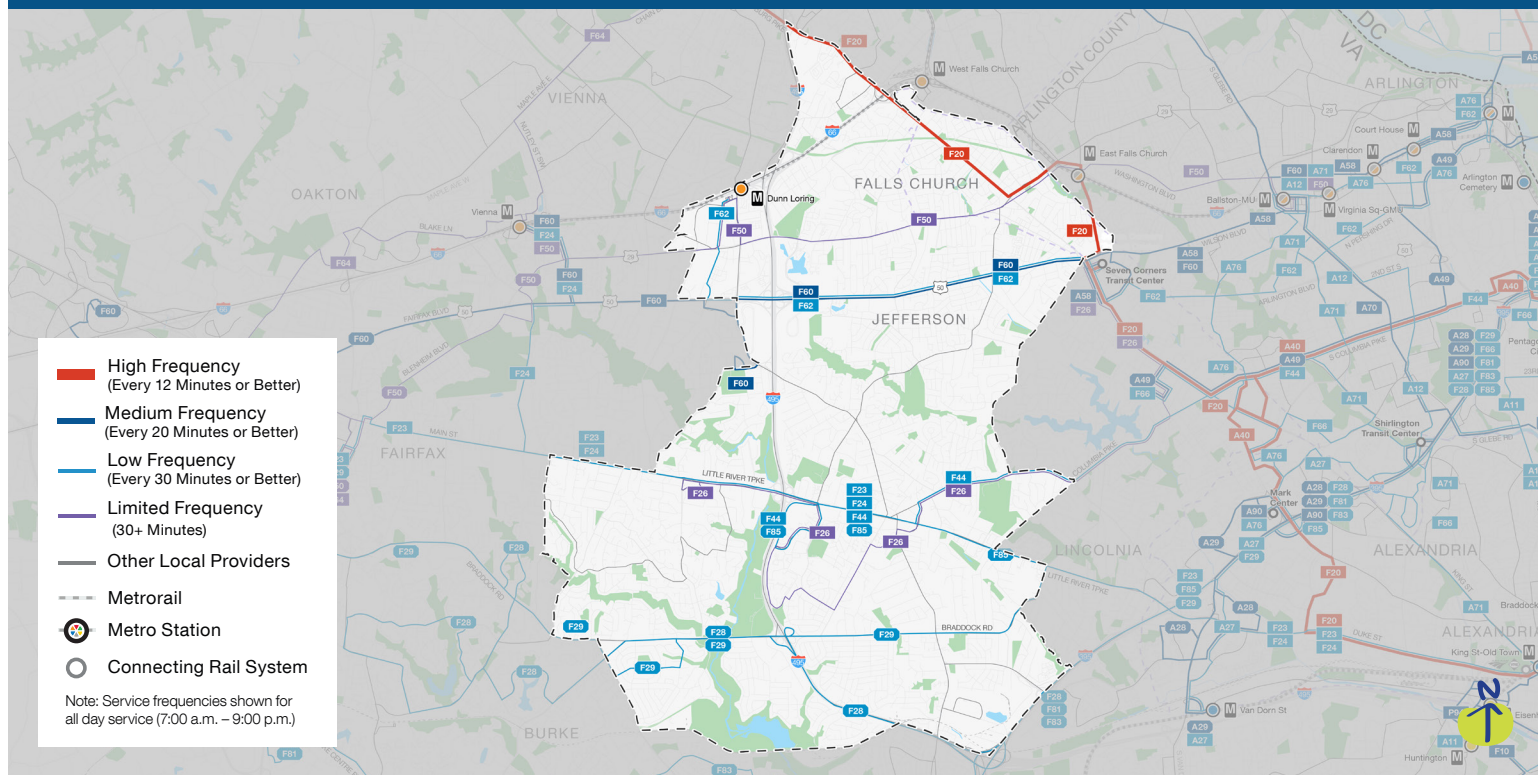


PROPOSED 2025 BETTER BUS NETWORK

Neighborhood Profile: Annandale & Falls Church



Improvements in Annandale & Falls Church



Improved Frequency

More frequent service during weekends on Arlington Boulevard



Better Connections

New east-west connection between Fair Oaks, Inova Fairfax, Seven Corners, and Ballston



Longer Operating Hours

All-day service between Arlington Boulevard and Dunn Loring



Maximized Resources

Maintain improved commuter connections throughout Fairfax County



What this means for Annandale & Falls Church

Improved Frequency

You told us that increasing frequency and decreasing wait time is your top priority.

So we're offering more frequent service on one route:

- **F50** improves frequency during the midday weekdays.
- **F62** improves frequency on Arlington Boulevard east of Merrifield on weekends

Better Connections

New connections will get you to more places faster and easier, including:

- **F50** provides a new connection from Dunn Loring Merrifield and the Mosaic District west to George Mason University.
- **F60** offers new east-west connection between Fair Oaks, Inova Fairfax, Seven Corners, and Ballston

On average, a customer can access 9,700 (5.7%) more jobs on weekdays

Longer Operating Hours

Customers told us – and the data shows – that people want and need service during the middle of the day, in the evenings, and on weekends.

Two routes provide improved midday, evening or weekend service:

- **F26** provides new weekend service from Annandale to Culmore and Seven Corners
- **F62** provides all-day service between Arlington Boulevard and Dunn Loring

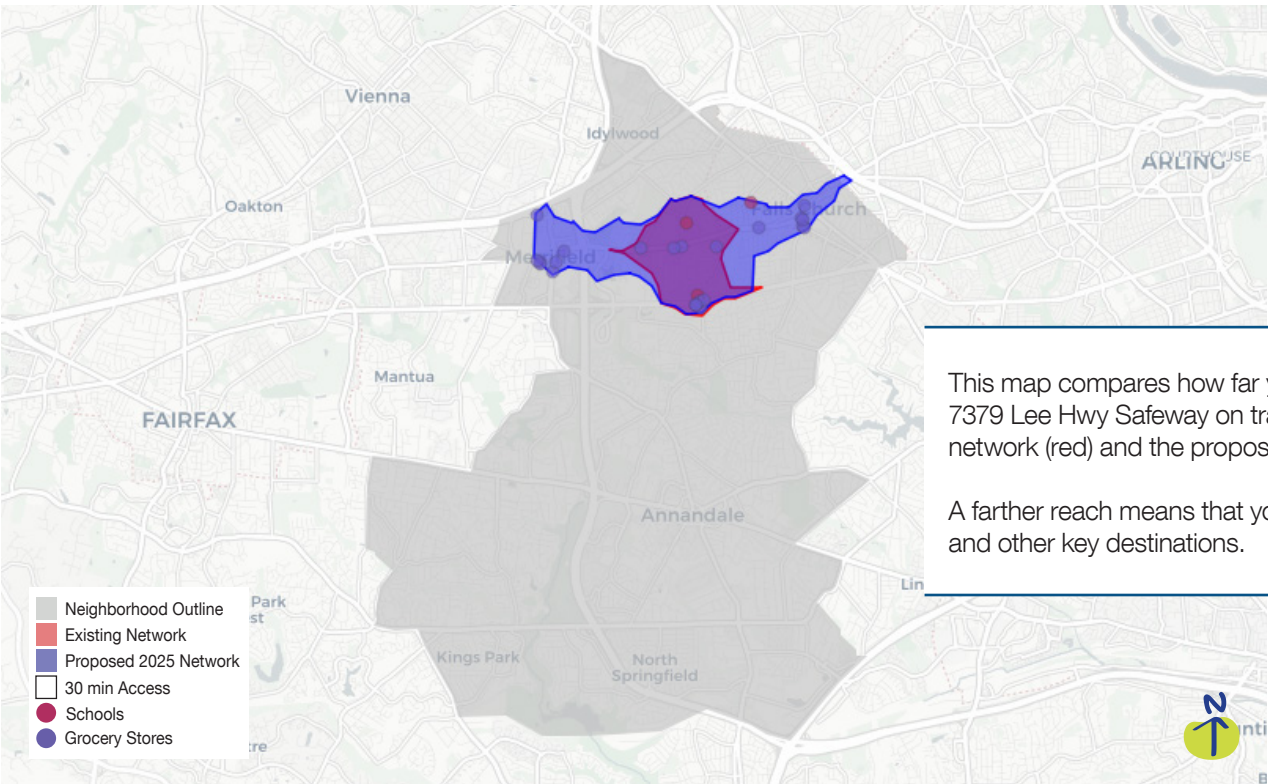
7,850 (16%) more people can access 30-minute or better service on weekends

Maximized Resources

Service is more direct, reduces duplication and is easier to understand:

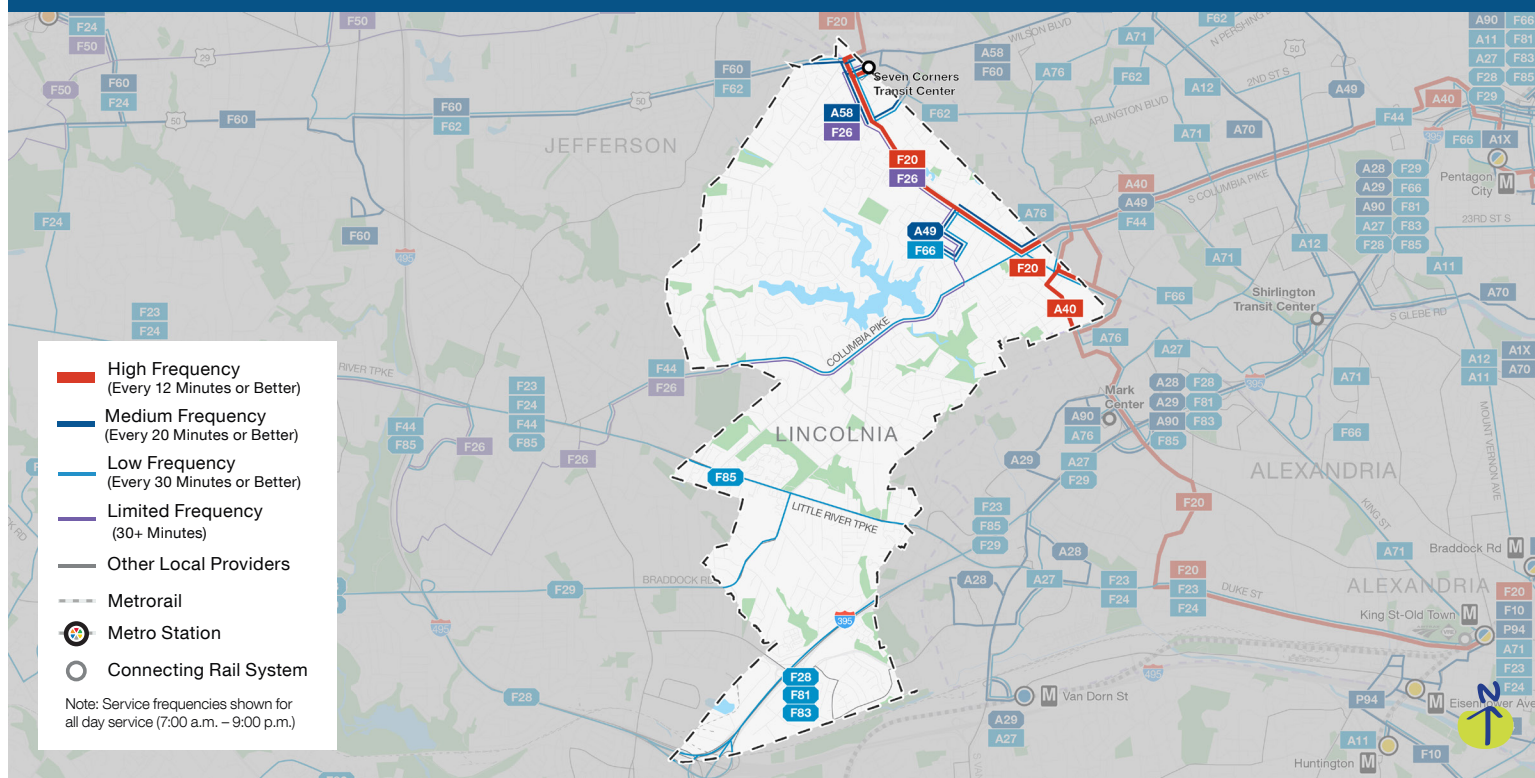
- Maintained an enhanced network of commuter connections throughout Fairfax County, with rush hour commuter services consolidated and streamlined along Braddock Rd between North Springfield and Pentagon

2% (1k) more trips have a convenient transit option



PROPOSED 2025 BETTER BUS NETWORK

Neighborhood Profile: Bailey's Crossroads & Lincolnia



Improvements in Bailey's Crossroads & Lincolnia



Improved Frequency

More frequent service on two routes serving Seven Corners Transit Center, Farragut Square and Merrifield



Better Connections

New connections Culmore, Claremont, Shirlington, South Fairlington, Pentagon City, and Pentagon



Longer Operating Hours

Longer operating hours on two routes, including new late-night service along Columbia Pike to L'Enfant Plaza



Maximized Resources

Routes redesigned to maintain frequencies on major corridors while increasing connections



What this means for Bailey's Crossroads & Lincolnia

Improved Frequency

You told us that increasing frequency and decreasing wait time is your top priority.

So we're offering more frequent service on two routes:

- **A58** improves weekend frequency between Seven Corners Transit Center and Farragut Square
- **F62** improves frequency midday and evening frequency on weekdays between Seven Corners and Merrifield

Better Connections

New connections will get you to more places faster and easier, including:

- **A49** offers new rush period connection between Culmore and downtown DC
- **A58** offers new connections between Seven Corners and downtown DC via Clarendon and Rosslyn
- **A76** offers new connections between Mark Center and Southern Towers and Clarendon and Rosslyn
- **F66** offers new connections between Culmore, Leesburg Pike, and Shirlington to Pentagon City

With these route specific improvements, a customer on average retains access to 95% jobs on weekdays

Longer Operating Hours

Customers told us – and the data shows – that people want and need service during the middle of the day, in the evenings, and on weekends.

Two routes provide improved midday, evening or weekend service:

- **F26** provides weekday service until 10:00 p.m. and new weekend service
- **A40** provides late-night connection from 11:00 p.m. to 2:00 a.m. along Columbia Pike to L'Enfant Plaza

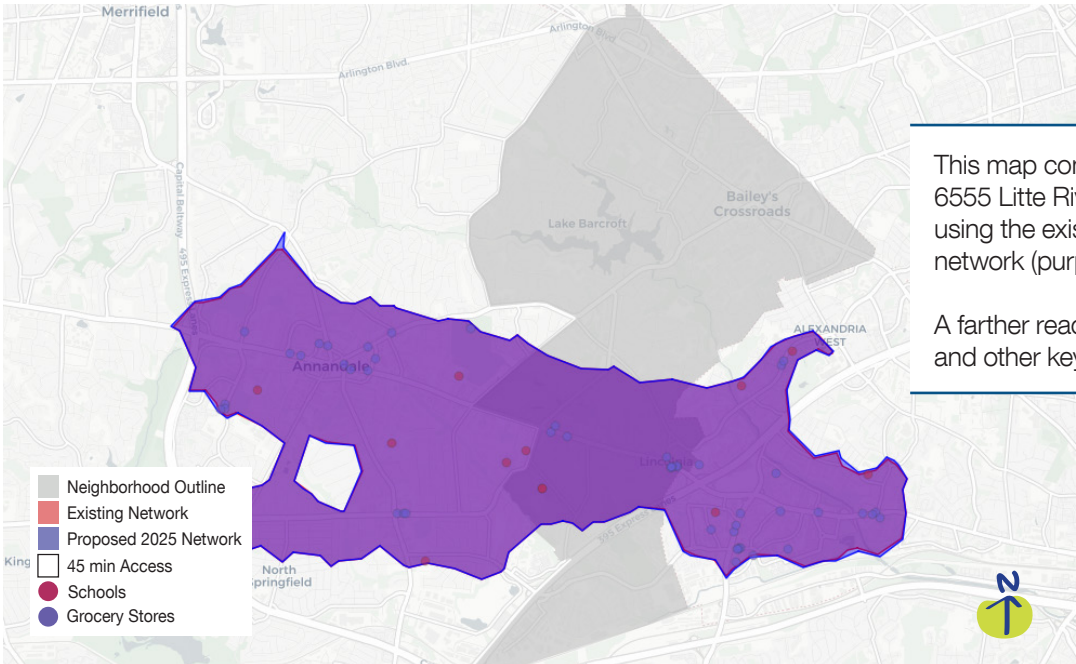
6,350 (20%) more people can access 30-minute or better service on weekends

Maximized Resources

Service is more direct, reduces duplication and is easier to understand:

- **A40, F44, F23, and F24** provide coordinated services to maintain frequencies along major corridors while also increasing connections

5% (1k) more trips have a convenient transit option

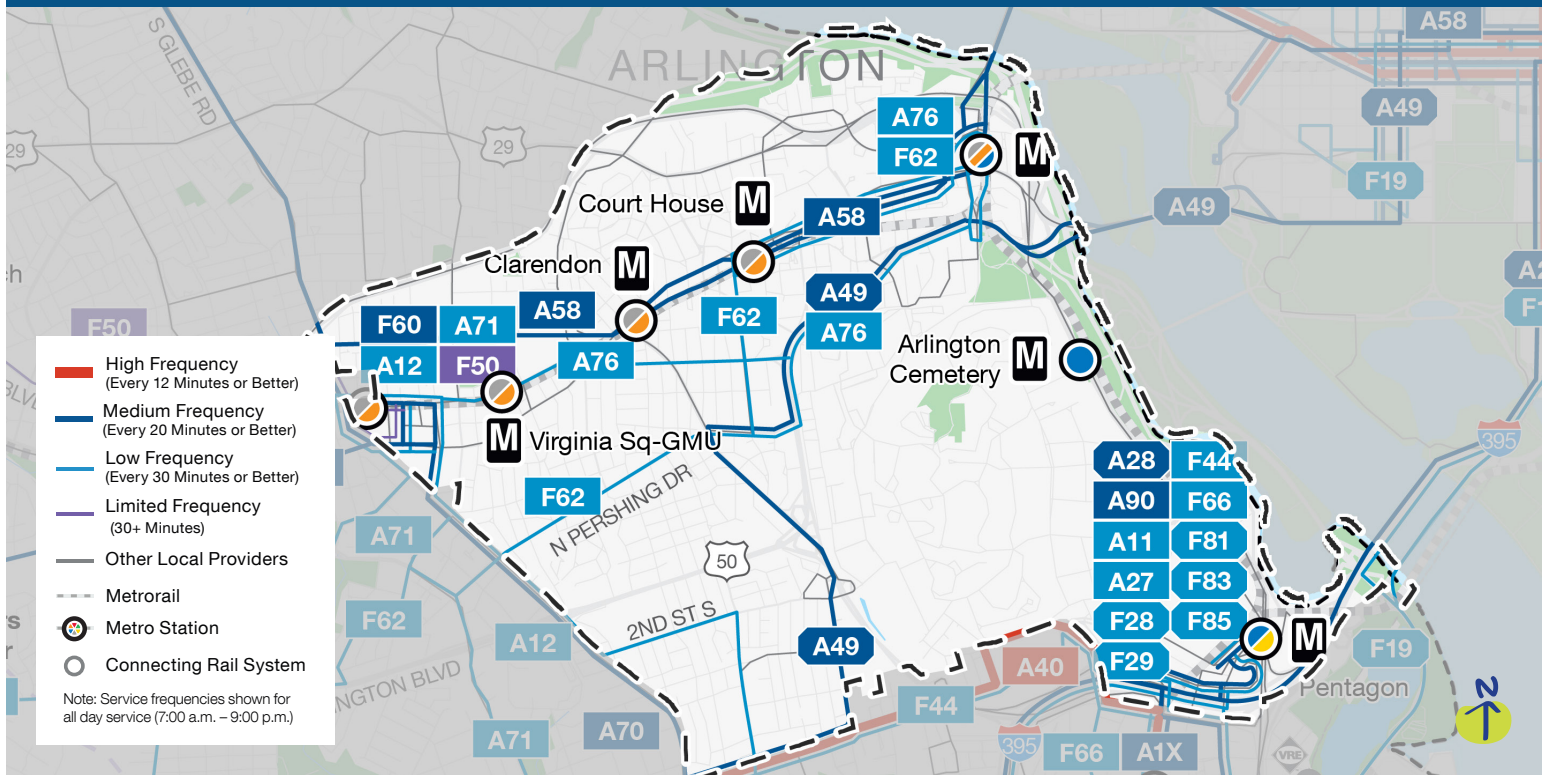


This map compares how far you can travel from 6555 LITTLE RIVER TURNPIKE HOME DEPOT on transit using the existing network (red) and the proposed network (purple).

A farther reach means that you can get to more jobs and other key destinations.

PROPOSED 2025 BETTER BUS NETWORK

Neighborhood Profile: Ballston, Court House & Rosslyn



Improvements in Ballston, Court House & Rosslyn



Improved Frequency

More frequent service on three routes serving Court House Road, Arlington Boulevard, Seven Corners and Rosslyn



Better Connections

New service connecting between Seven Corners and Clarendon, Rosslyn, and downtown DC



Longer Operating Hours

Longer operating hours on two routes, including earlier Saturday morning service between Pentagon and Huntington



What this means for Ballston, Court House & Rosslyn

Improved Frequency

You told us that increasing frequency and decreasing wait time is your top priority. So we're offering more frequent service on three routes, including:

- **A58** improves weekend frequency between Seven Corners Transit Center and Farragut Square
- **F62** improves frequency all day on weekends on Arlington Boulevard east of Merrifield and Pershing Drive

Better Connections

New connections will get you to more places faster and easier, including:

- **A49** offers new rush period connections between Culmore and downtown DC
- **A58** offers new connections between Seven Corners and downtown DC via Clarendon and Rosslyn
- **A76** offers new connections between Mark Center and Southern Towers and Clarendon and Rosslyn
- **F62** offers new connections between Arlington and the Merrifield/Mosaic District and Dunn Loring Station from Court House and Rosslyn

Longer Operating Hours

Customers told us – and the data shows – that people want and need service during the middle of the day, in the evenings, and on weekends.

One route provides improved midday, evening, or weekend service

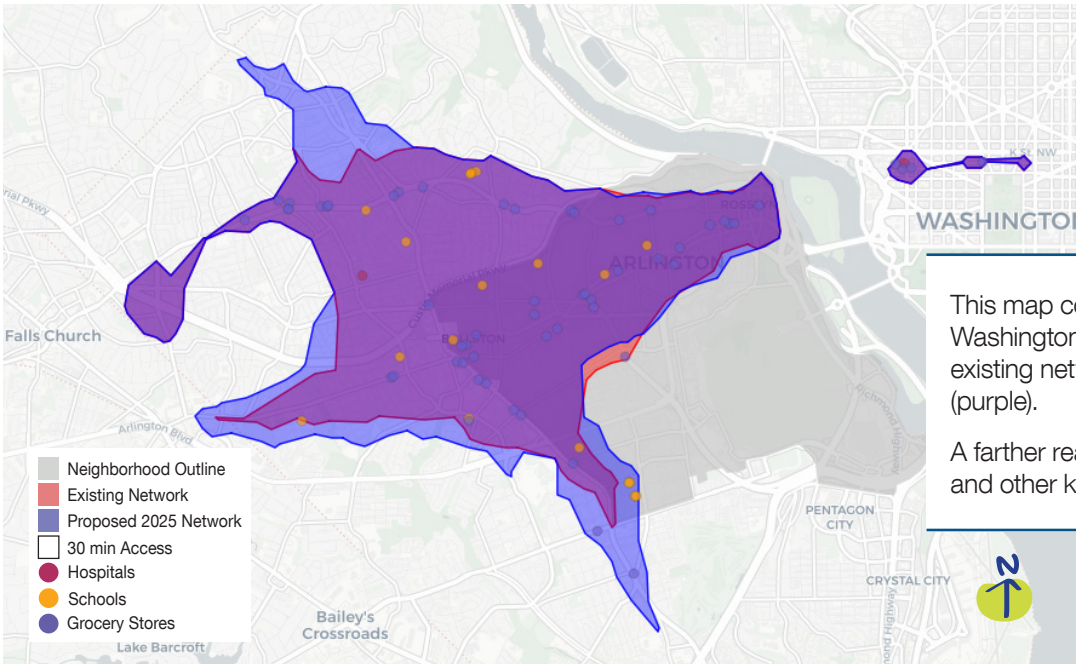
- **F62** provides all-day service between Arlington Boulevard and Dunn Loring Station and the Merrifield/Mosaic District

Maximized Resources

Service is more direct, reduces duplication and is easier to understand:

- **A40** and **F44** simplify service along Columbia Pike to create more direct connections

**4% (1.8k) more trips
have a convenient transit
option**

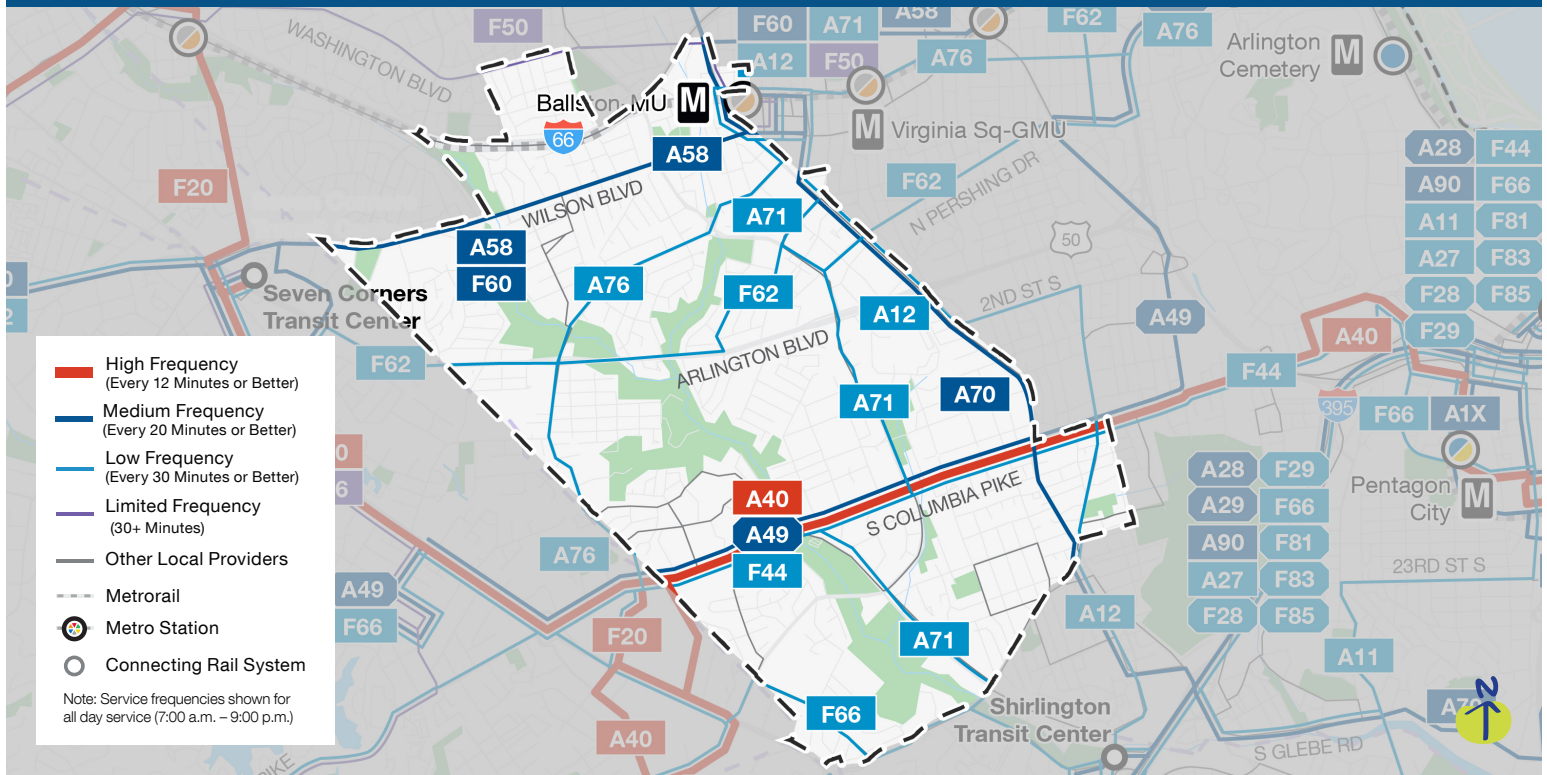


This map compares how far you can travel from Washington Liberty High School on transit using the existing network (red) and the proposed network (purple).

A farther reach means that you can get to more jobs and other key destinations.

PROPOSED 2025 BETTER BUS NETWORK

Neighborhood Profile: Bluemont, Barcroft & Douglas Park



Improvements in Bluemont, Barcroft & Douglas Park



Improved Frequency

More frequent service on four routes serving Columbia Pike, Arlington Boulevard and King Street



Better Connections

New direct services connecting Ballston, Shirlington, South Fairlington, to Old Town Alexandria and from Tyson and Ballston to Potomac Yard



Longer Operating Hours

Longer operating hours on two routes, including late night service along Columbia Pike to L'Enfant Plaza



Maximized Resources

Routes redesigned to simplify service along Columbia Pike



What this means for Bluemont, Barcroft & Douglas Park

Improved Frequency

You told us that increasing frequency and decreasing wait time is your top priority. So we're offering more frequent service on three routes, including:

- **A70** improves frequency along the Glebe Rd Corridor between Ballston, Douglas Park and Green Valley.
- **A71** improves weekday and Saturday frequency between Ballston-MU and Shirlington

Better Connections

New connections will get you to more places faster and easier, including:

- **A49** offers new rush period connection between Culmore and downtown DC
- **A70** offers a new connection from Ballston to Potomac Yard
- **A71** offers new connections between Ballston, Shirlington, South Fairlington, and King St-Old Town
- **A76** offers new connections between Mark Center and Southern Towers and Clarendon and Rosslyn
- **F62** offers new, daily service extending from Seven Corners Transit Center to Dunn Loring Station and the Merrifield/Mosaic District

On average, a customer can access 16,600 (4%) more jobs on weekdays

Longer Operating Hours

Customers told us – and the data shows – that people want and need service during the middle of the day, in the evenings, and on weekends.

Two routes provide improved midday, evening or weekend service:

- **A40** provides late-night connection from 11:00 p.m. to 2:00 a.m. along Columbia Pike to L'Enfant Plaza
- **F62** provides new all-day connection between Arlington Boulevard and Dunn Loring

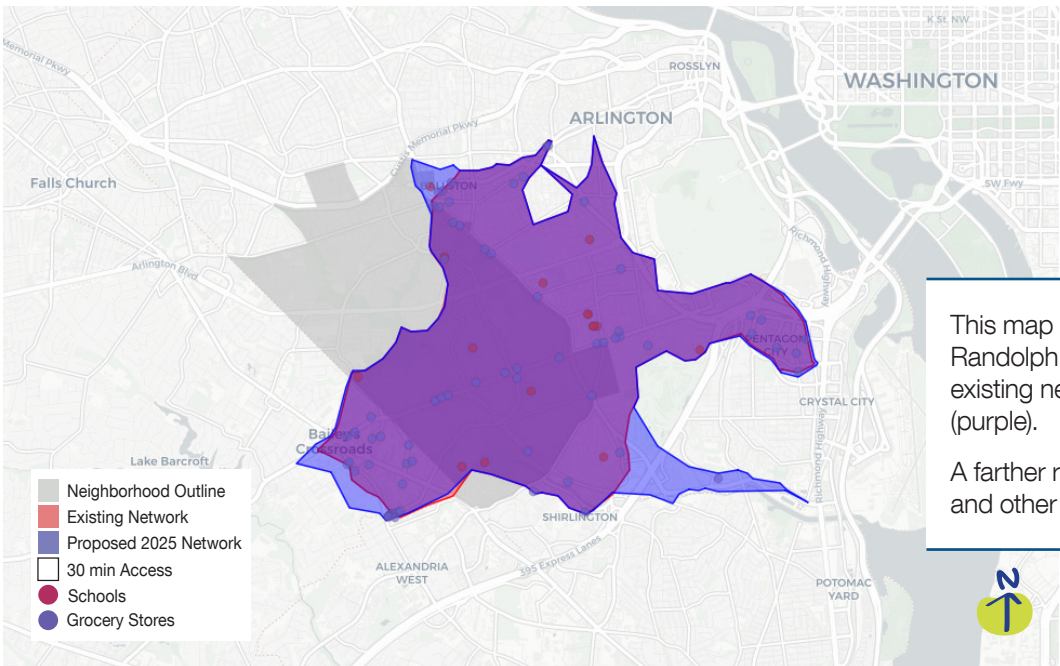
7,200 (16%) more people can access 30-minute or better service on weekends

Maximized Resources

Service is more direct, reduces duplication and is easier to understand:

- **A40** and **F44** simplify service along Columbia Pike to create more direct connections

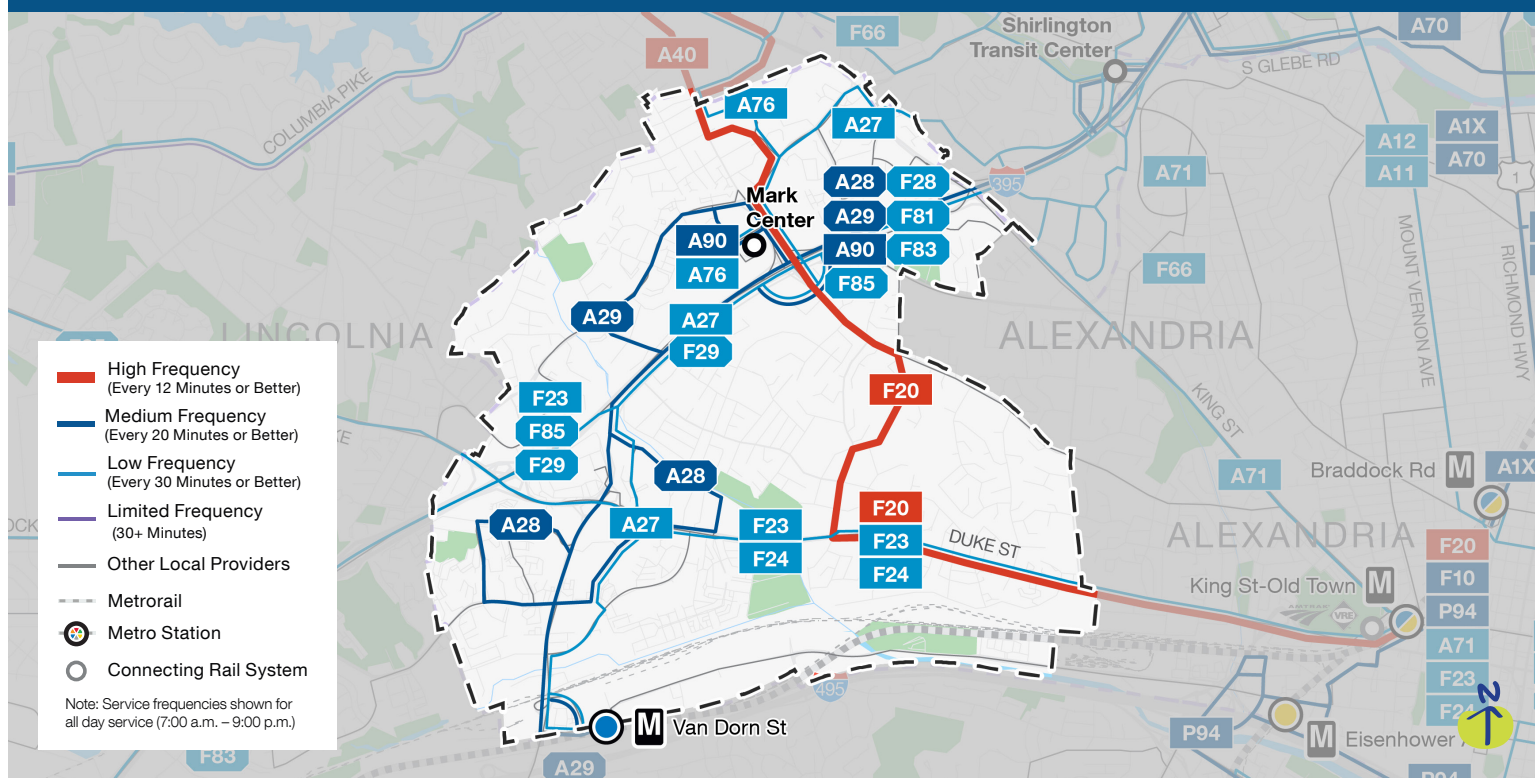
7% (1.1k) more trips have a convenient transit option



This map compares how far you can travel from Randolph Elementary School on transit using the existing network (red) and the proposed network (purple). A farther reach means that you can get to more jobs and other key destinations.

PROPOSED 2025 BETTER BUS NETWORK

Neighborhood Profile: Brookville & Landmark/Van Dorn



Improvements in Brookville & Landmark/Van Dorn



Better Connections

New service connecting into downtown DC from Van Dorn Street, Beauregard Street, Mark Center, Southern Towers, and Shirlington



Maximized Resources

Routes redesigned to maintain frequencies on major corridors and increase connections to new places



What this means for Brookville & Landmark/Van Dorn

Better Connections

New connections will get you to more places faster and easier, including:

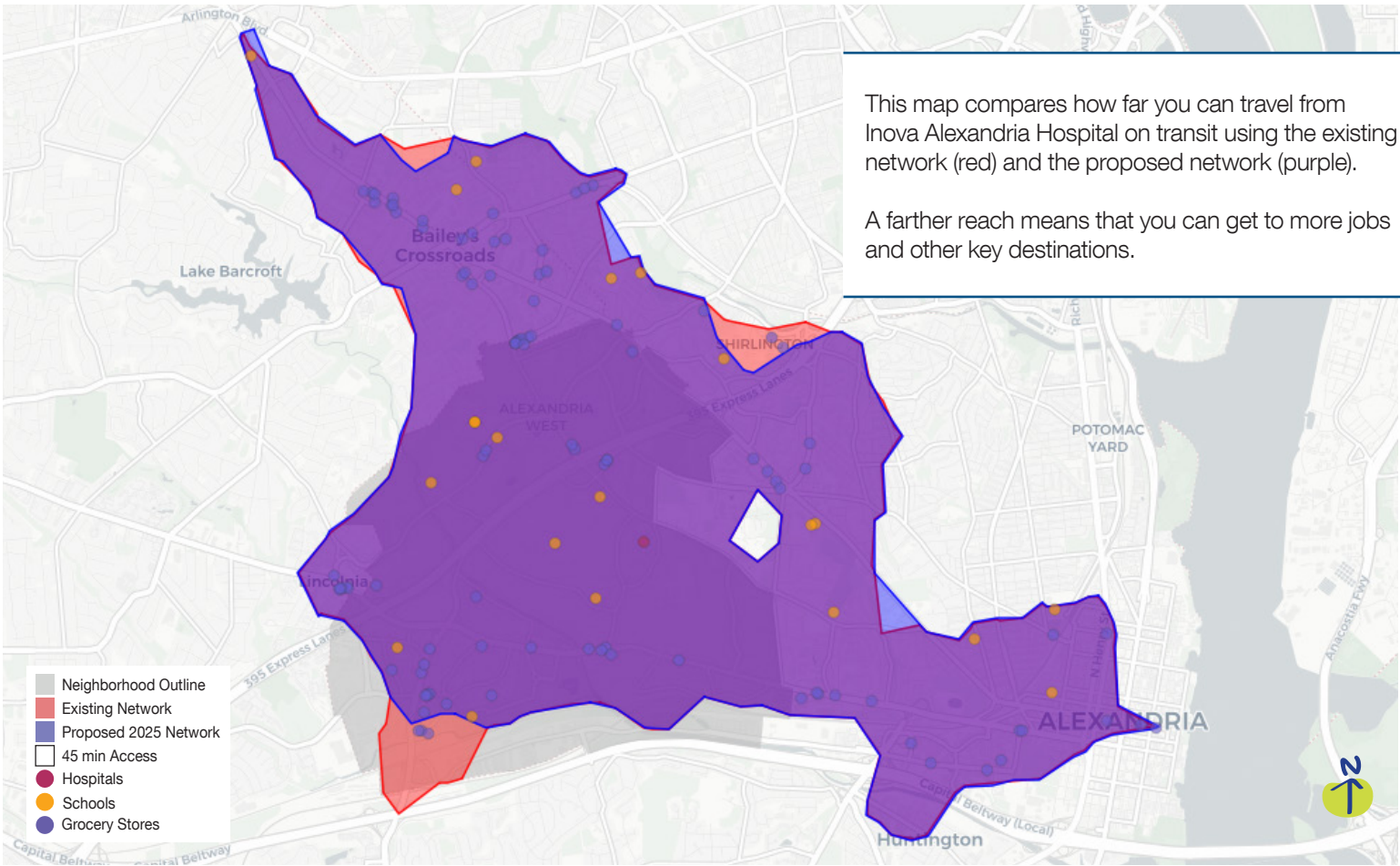
- **A29** offers new connections into downtown DC from Van Dorn Street, Beauregard Street, Mark Center, Southern Towers, and Shirlington
- **A76** offers new connections between the Mark Center, Southern Towers, NVCC-Alexandria, Ballston, Clarendon, and Rosslyn

With these route specific improvements, a customer on average retains access to 94% jobs on weekday

Maximized Resources

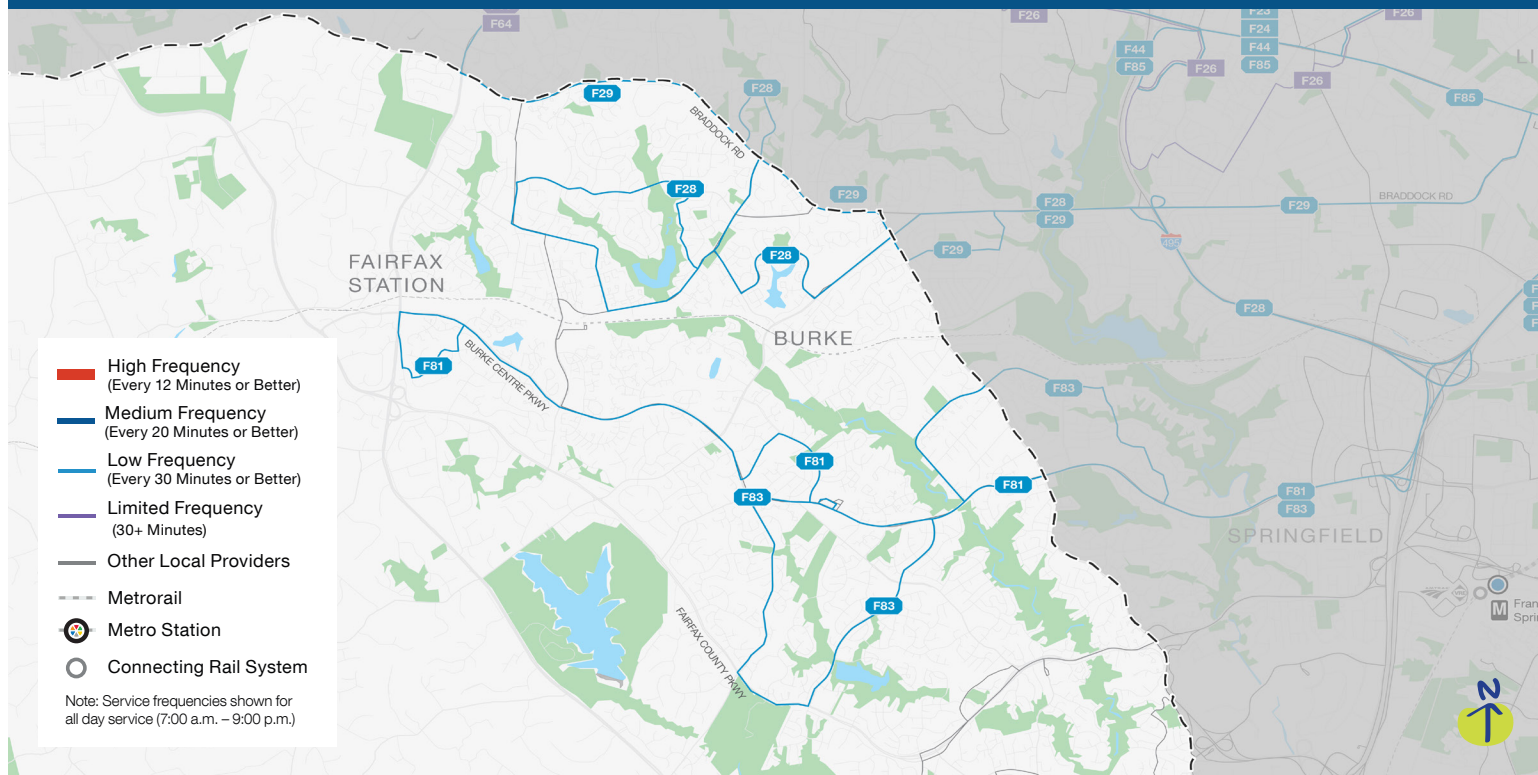
Service is more direct, reduces duplication and is easier to understand:

- **F23 and F24 provide** coordinated services that maintain frequencies along major corridors



PROPOSED 2025 BETTER BUS NETWORK

Neighborhood Profile: Burke



Improvements in Burke



Better Connections

New service on Lee Chapel Road and Fairfax County Pkwy



Maximized Resources

Routes expanded to provide improved commuter connections in Fairfax County



What this means for Burke

Better Connections

New connections will get you to more places faster and easier, including:

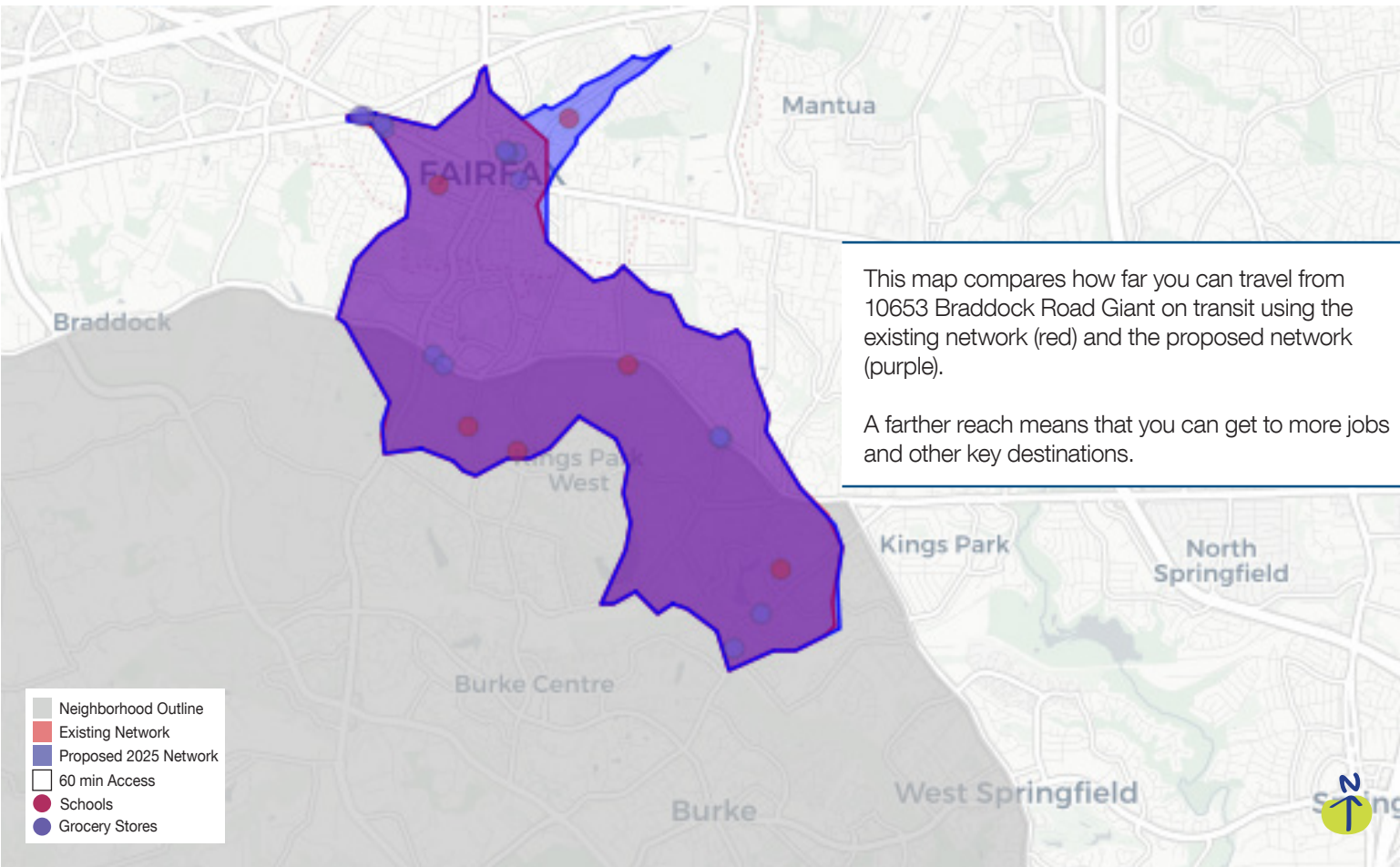
- **F83** offers new service on Lee Chapel Road and Fairfax County Pkwy and new connections to the Rolling Valley Park-and-Ride.

Maximized Resources

Service is more direct, reduces duplication and is easier to understand:

- Maintained an enhanced network of commuter connections throughout Fairfax County

3% (1k) more trips have a convenient transit option



PROPOSED 2025 BETTER BUS NETWORK

Neighborhood Profile: Crystal / Pentagon Cities & Shirlington



Improvements in Crystal / Pentagon Cities & Shirlington



Improved Frequency

More frequent service on two routes serving Ballston, South Fairlington, Pentagon and Old Town Alexandria



Better Connections

New service connecting between Tysons, McLean, Ballston, and Potomac Yard



Longer Operating Hours

Longer operating hours on three routes, including longer weekend service in South Fairlington



Maximized Resources

Routes redesigned to create more direct connections from Columbia Pike



What this means for Crystal / Pentagon Cities & Shirlington

Improved Frequency

You told us that increasing frequency and decreasing wait time is your top priority.

So we're offering more frequent service on two routes:

- **A71** improves weekday and Saturday frequency between Ballston-MU and King St-Old Town
- **F66** improves frequency midday and evening on weekends and all day on Saturday between South Fairlington, Pentagon, and Pentagon City

With these route specific improvements, 91% people retain access to 20-minute or better service on weekdays.

Better Connections

New connections will get you to more places faster and easier, including:

- **A70** offers new connections between Tysons, McLean, Ballston, and Potomac Yard
- **A71** offers new direct connections between Ballston, Shirlington, South Fairlington, and King St-Old Town Station
- **F66** offers new connections between Culmore, Leesburg Pike, and Shirlington to Pentagon City

Longer Operating Hours

Customers told us – and the data shows – that people want and need service during the middle of the day, in the evenings, and on weekends.

Three routes provide improved midday, evening or weekend service:

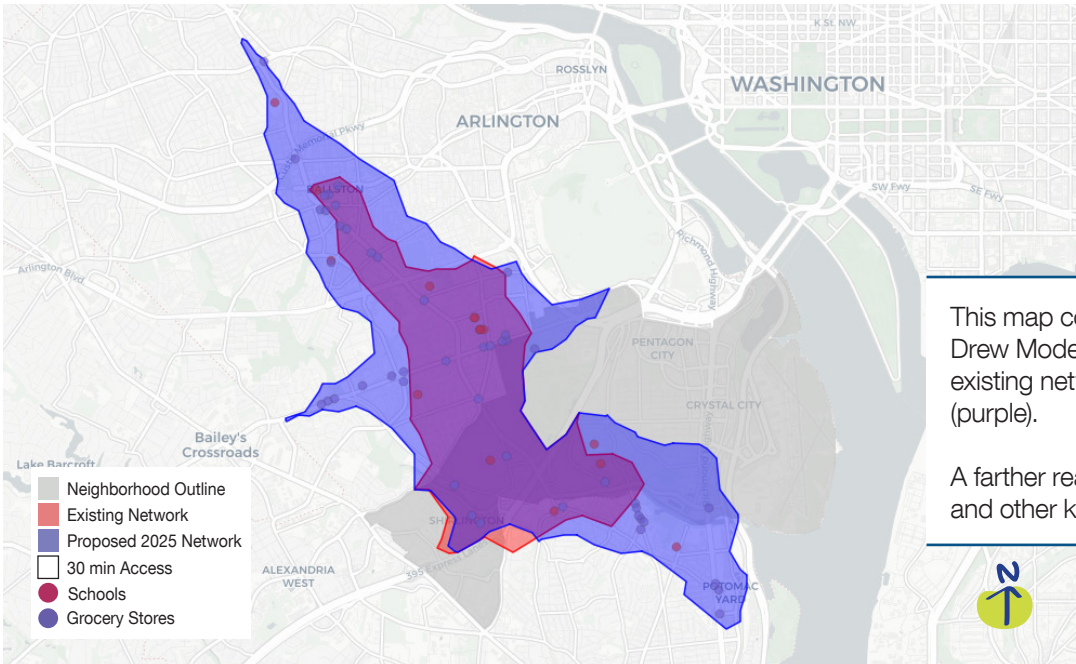
- **A11** provides earlier Saturday morning service between Pentagon and Huntington
- **A40** provides late-night connection from 11:00 p.m. to 2:00 a.m. along Columbia Pike to L'Enfant Plaza
- **F66** provides service that starts earlier and ends later on weekends in South Fairlington

Maximized Resources

Service is more direct, reduces duplication and is easier to understand:

- **A40** and **F44** simplify service along Columbia Pike to create more direct connections

7% (2.4k) more trips have a convenient transit option

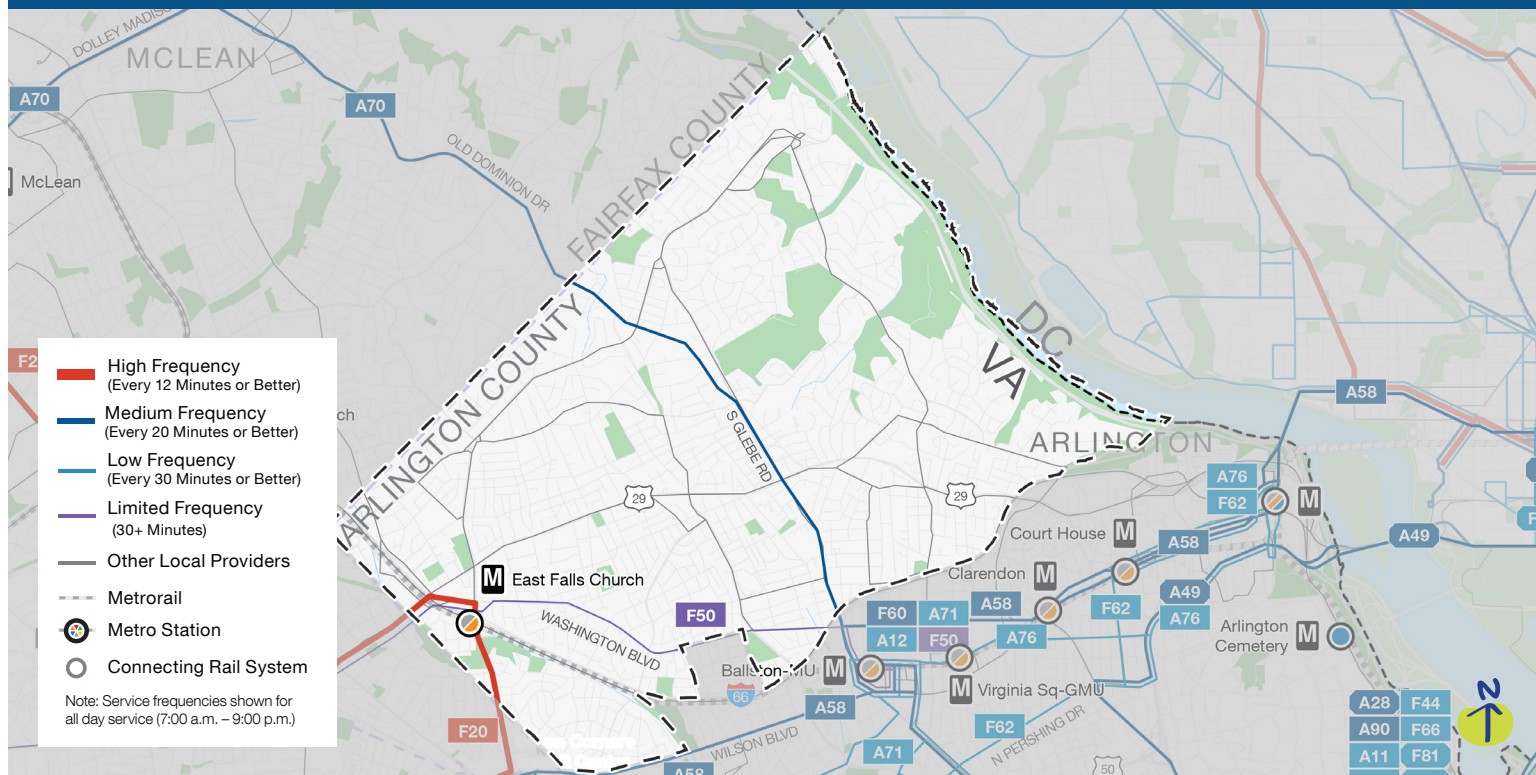


This map compares how far you can travel from Drew Model Elementary School on transit using the existing network (red) and the proposed network (purple).

A farther reach means that you can get to more jobs and other key destinations.

PROPOSED 2025 BETTER BUS NETWORK

Neighborhood Profile: East Falls Church & Garden City



Improvements in East Falls Church & Garden City



Improved Frequency

More frequent service on the US-29 corridor



Better Connections

New service connecting between Tysons, McLean, Ballston, and Potomac Yard



Maximized Resources

Routes redesigned to provide faster connections between Tysons, McLean, Ballston, and Potomac Yard



What this means for East Falls Church & Garden City

Improved Frequency

You told us that increasing frequency and decreasing wait time is your top priority.

So we're offering more frequent service on two routes:

- **A70** improves frequency weekends between Tysons and Ballston
- **F50** improves frequency midday along the entirety of the US-29 corridor

4,750 (22%) more people can access 30-minute or better service on weekends

Better Connections

New connections will get you to more places faster and easier—including Glenmont, the US-1 Corridor, White Oak Medical Center and Greencastle.

- **A70** offers new connections from Tysons, McLean, Ballston, to Potomac Yard
- **F50** offers new connections to George Mason University from the US-29 corridor

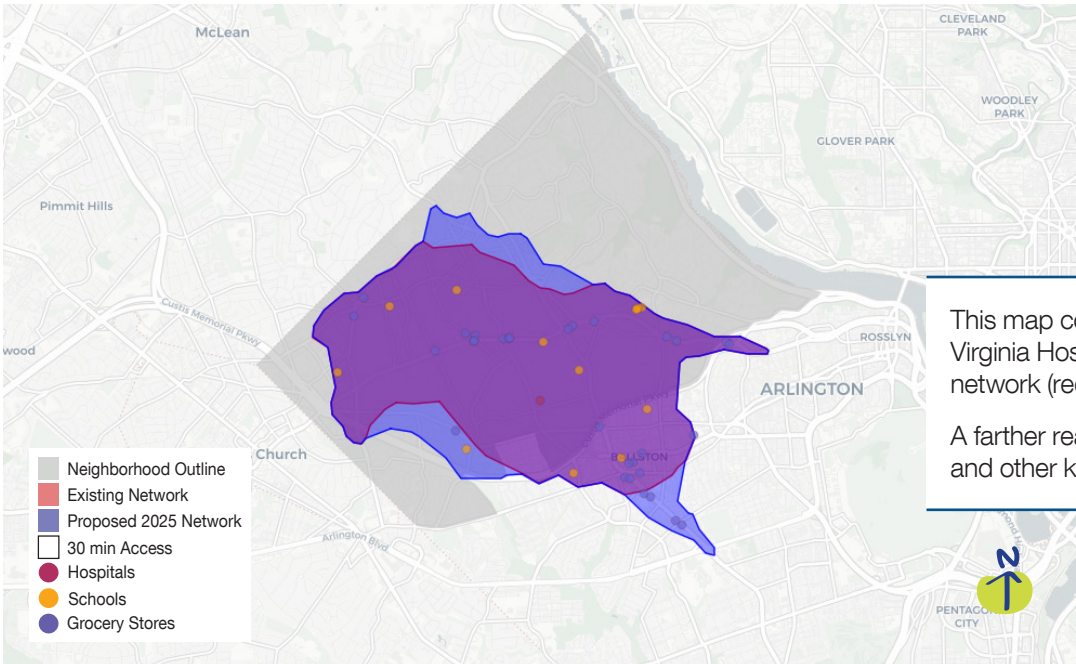
On average, a customer can access 19,300 (7%) more jobs on weekdays

Maximized Resources

Service is more direct, reduces duplication and is easier to understand:

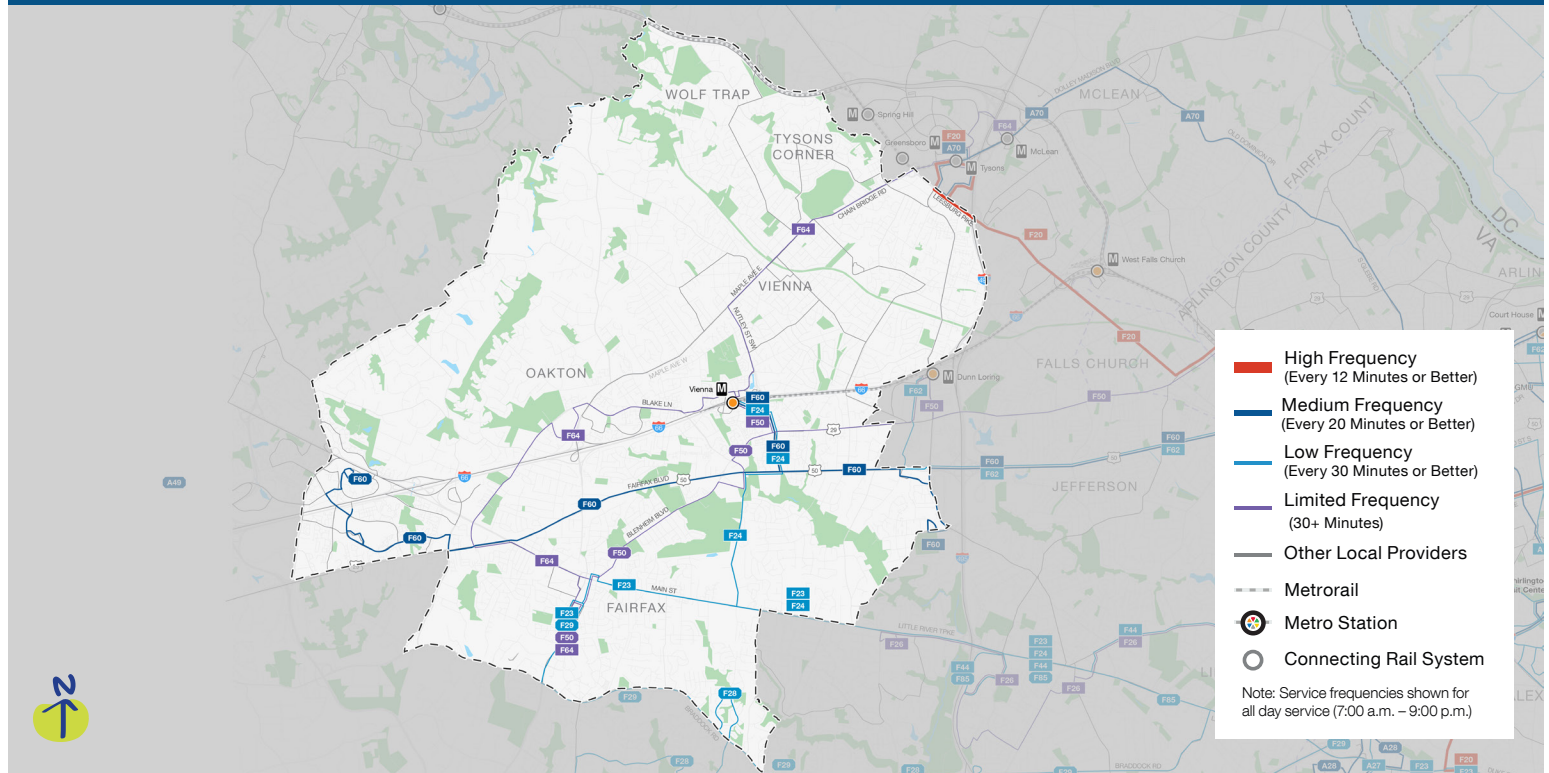
- **F20** provides a quick connection between East Falls Church and King St-Old Town station by bypassing West Falls Church

3% (500) more trips have a convenient transit option



PROPOSED 2025 BETTER BUS NETWORK

Neighborhood Profile: Fairfax City & Vienna



Improvements in Fairfax City & Vienna



Improved Frequency

More frequent service on Blake Lane and Jermantown Road



Better Connections

New service connecting between Fair Oaks, Inova Fairfax, Seven Corners, and Ballston



Maximized Resources

Coordinated services that maintain frequencies along major corridors



What this means for Fairfax City & Vienna

Improved Frequency

You told us that increasing frequency and decreasing wait time is your top priority.

So we're offering more frequent service on two routes:

- **F60** improves frequency during midday and weekends between Vienna Station and Fair Oaks Mall.
- **F64** improves frequency in rush periods on Blake Lane and Jermantown Road

With these route specific improvements, 83% people retain access to 20-minute or better service on weekdays.

82% of people retain access to 30-minute or better service on weekends

Better Connections

New connections will get you to more places faster and easier, including:

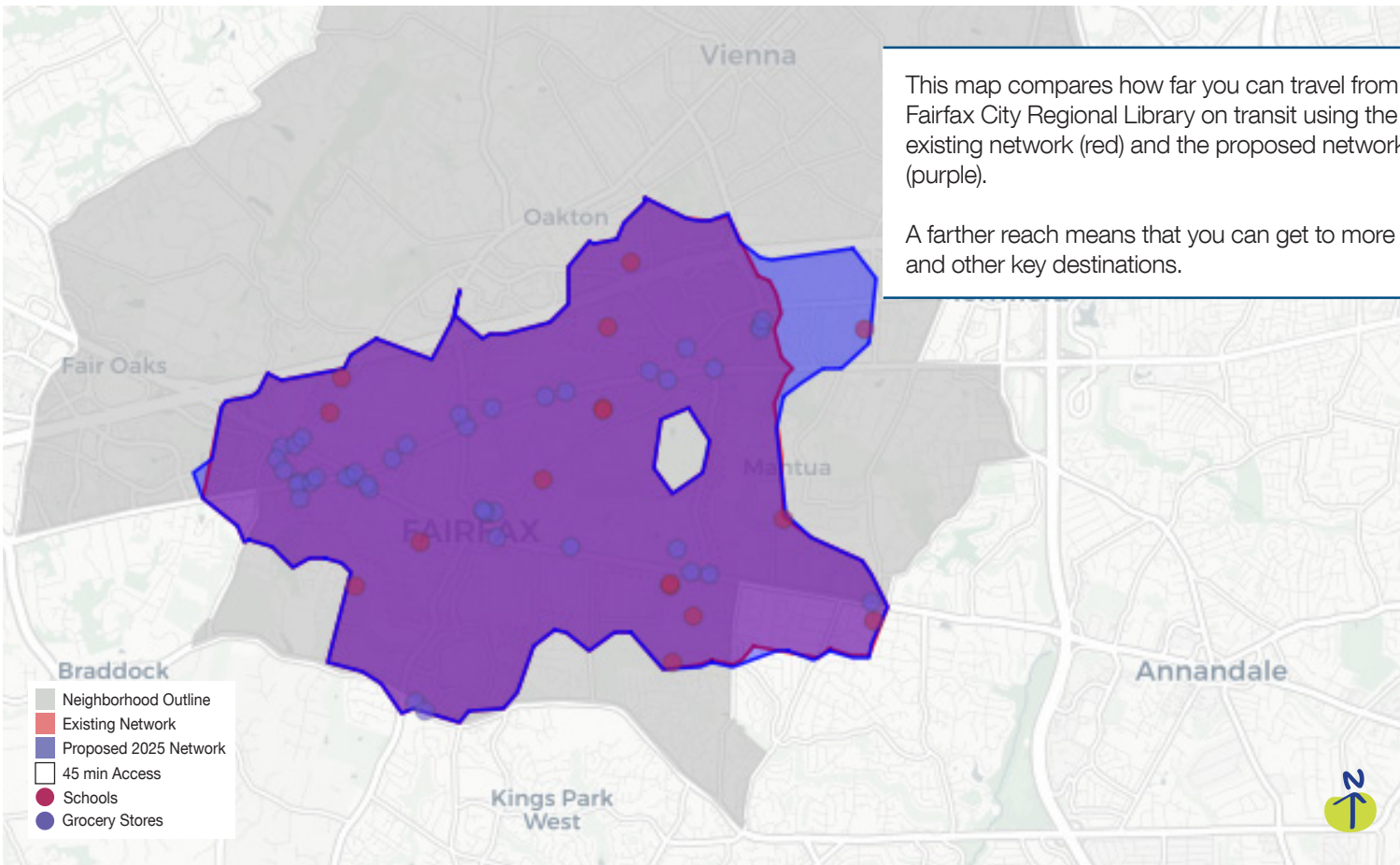
- **F50** offers new east-west connection between George Mason University, Fairfax Circle, Merrifield/ Mosaic District, Dunn Loring, Falls Church, and Ballston.
- **F60** offers new east-west connection between Fair Oaks, Inova Fairfax, Seven Corners, and Ballston
- **F64** offers new north-south connection between George Mason University, Oakton, Vienna, Tysons, and McLean.

On average, a customer can access 10,000 (12%) more jobs on weekdays accessible.

Maximized Resources

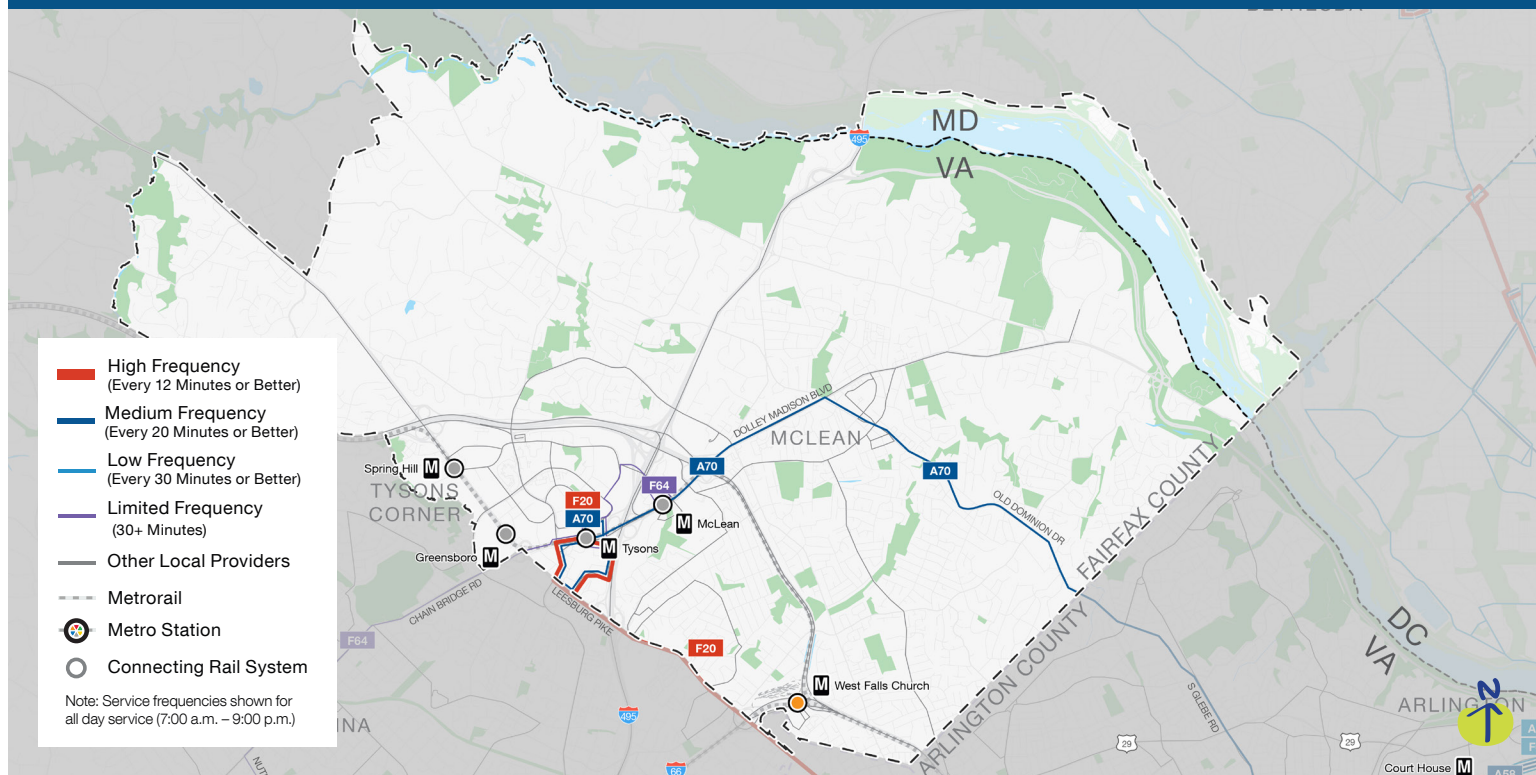
Service is more direct, reduces duplication and is easier to understand:

- **F23** and **F24** provide coordinated services that maintain frequencies along major corridors



PROPOSED 2025 BETTER BUS NETWORK

Neighborhood Profile: McLean & Tysons



Improvements in McLean & Tysons



Better Connections

New service connecting between Tysons, McLean, George Mason University, Ballston, and Potomac Yard



Maximized Resources

Route redesigned to create faster north-south connection on Glebe Road



What this means for McLean & Tysons

Better Connections

New connections will get you to more places faster and easier, including:

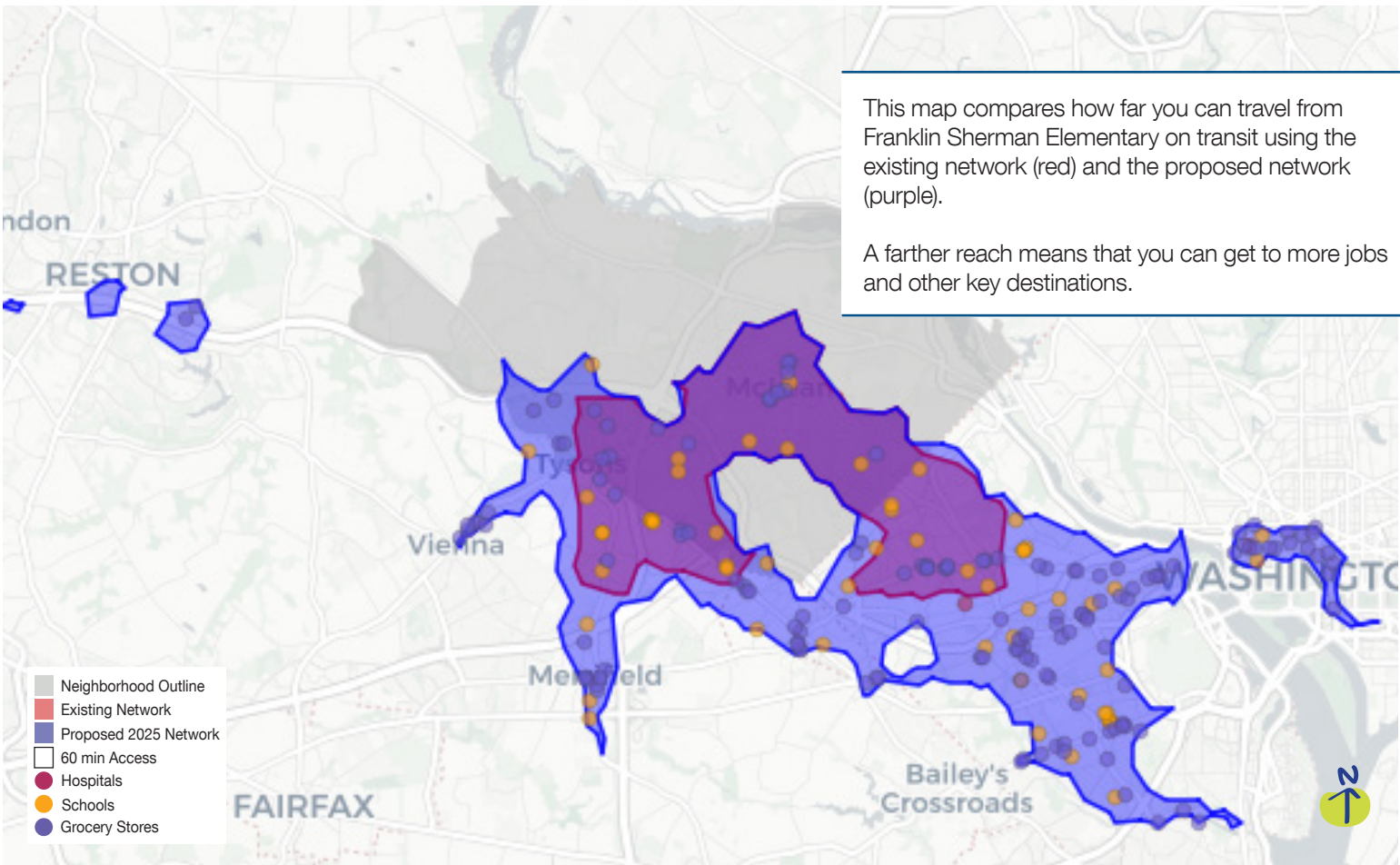
- **A70** offers new connections between Tysons, McLean, Ballston, and Potomac Yard
- **F64** offers new north-south connections between George Mason University, Oakton, Vienna, Tysons, and McLean

On average, a customer can access 15,600 (9.4%) more jobs on weekdays accessible.

Maximized Resources

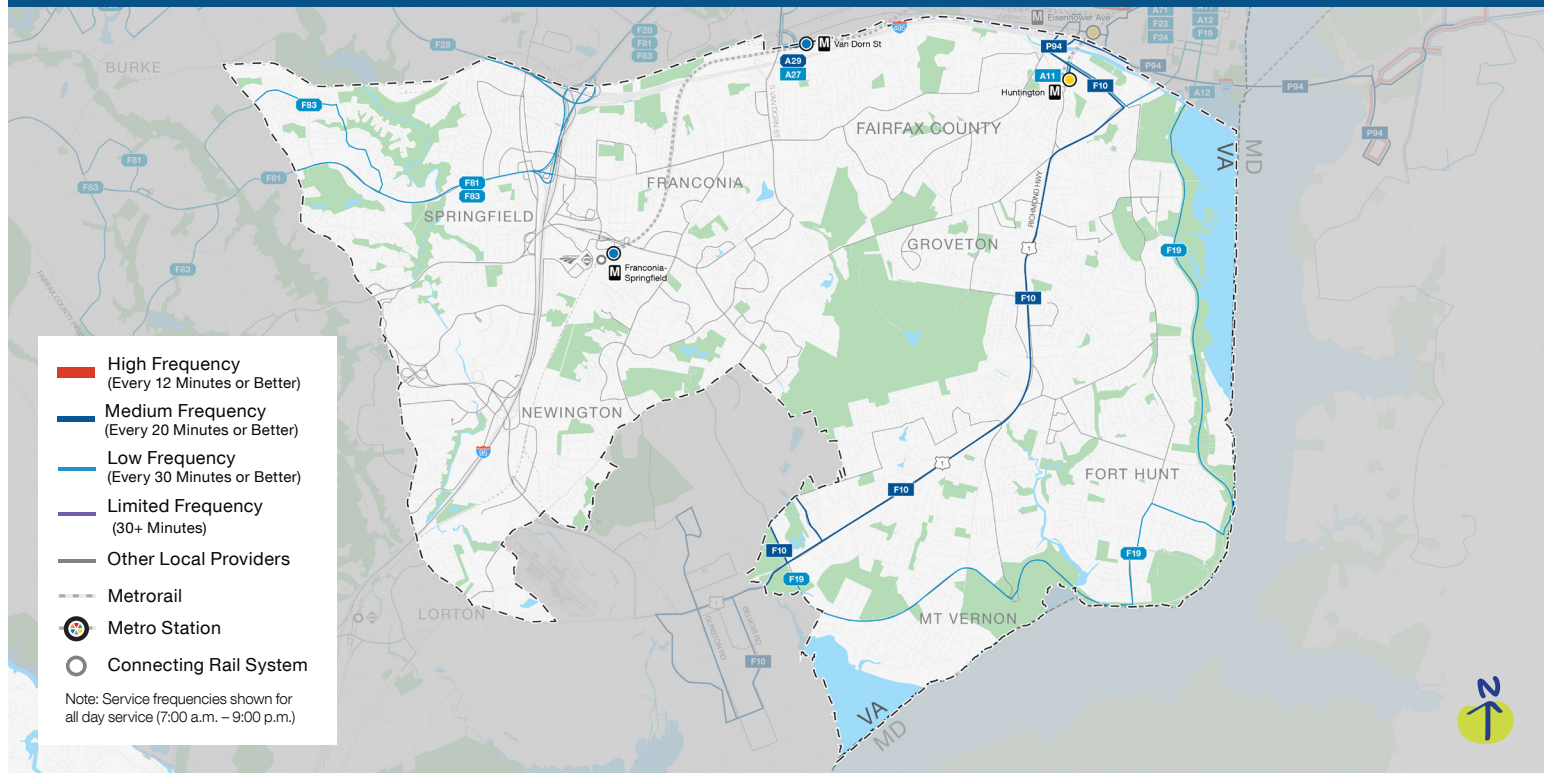
Service is more direct, reduces duplication and is easier to understand:

- **A70** provides a faster north-south connection along Glebe Road by bypassing Shirlington
- **F20** provides a faster north-south connection along Leesburg Pike by bypassing West Falls Church Station



PROPOSED 2025 BETTER BUS NETWORK

Neighborhood Profile: Mount Vernon & Springfield/Franconia



Improvements in Mount Vernon & Springfield/Franconia



Longer Operating Hours

New earlier Saturday morning service between Huntington and Pentagon



Maximized Resources

Maintained an enhanced network of commuter connections throughout Fairfax County



What this means for Mount Vernon & Springfield/Franconia

Longer Operating Hours

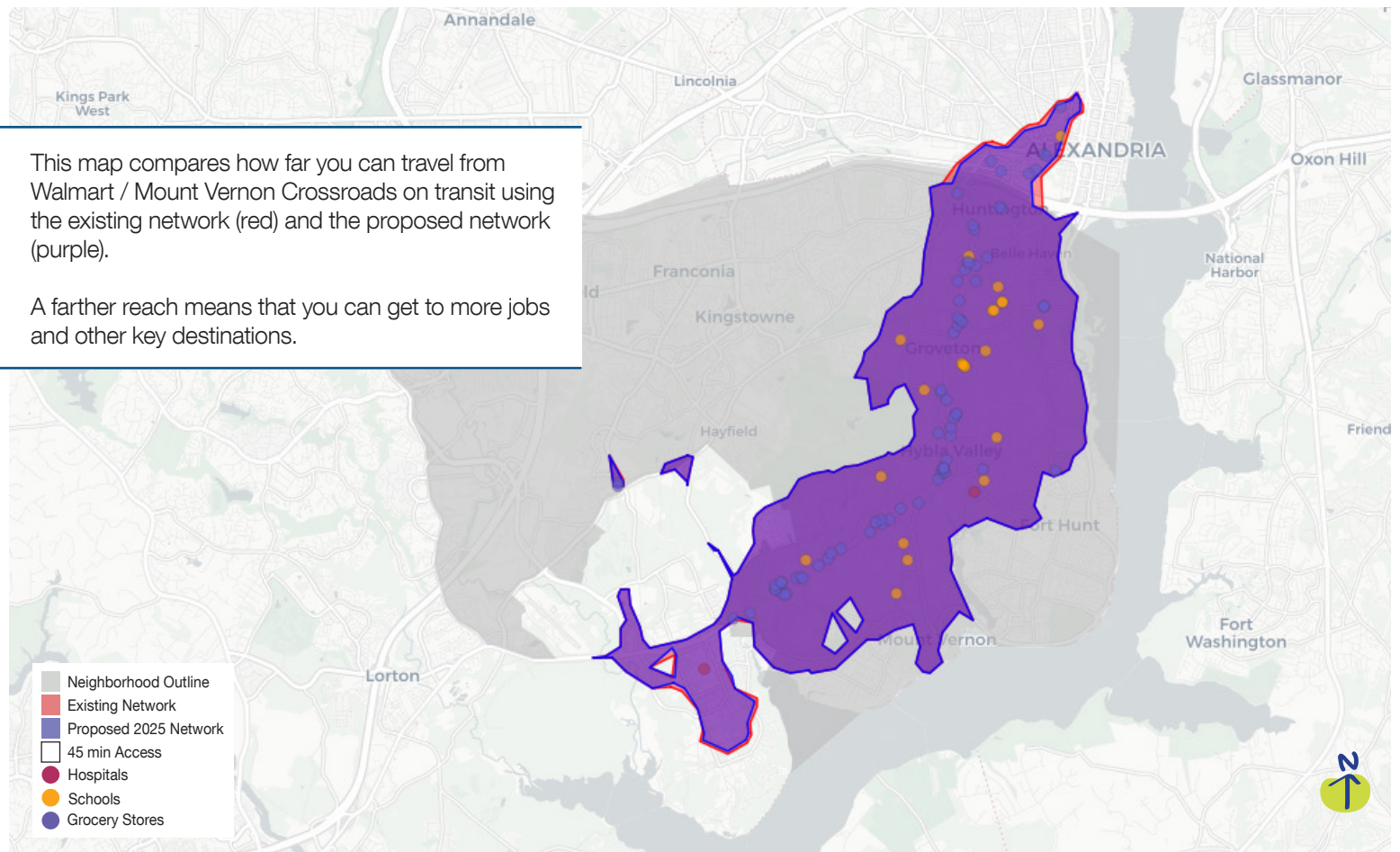
Customers told us – and the data shows – that people want and need service during the middle of the day, in the evenings, and on weekends.

- **A11** provides earlier Saturday morning service between Huntington and Pentagon

Maximized Resources

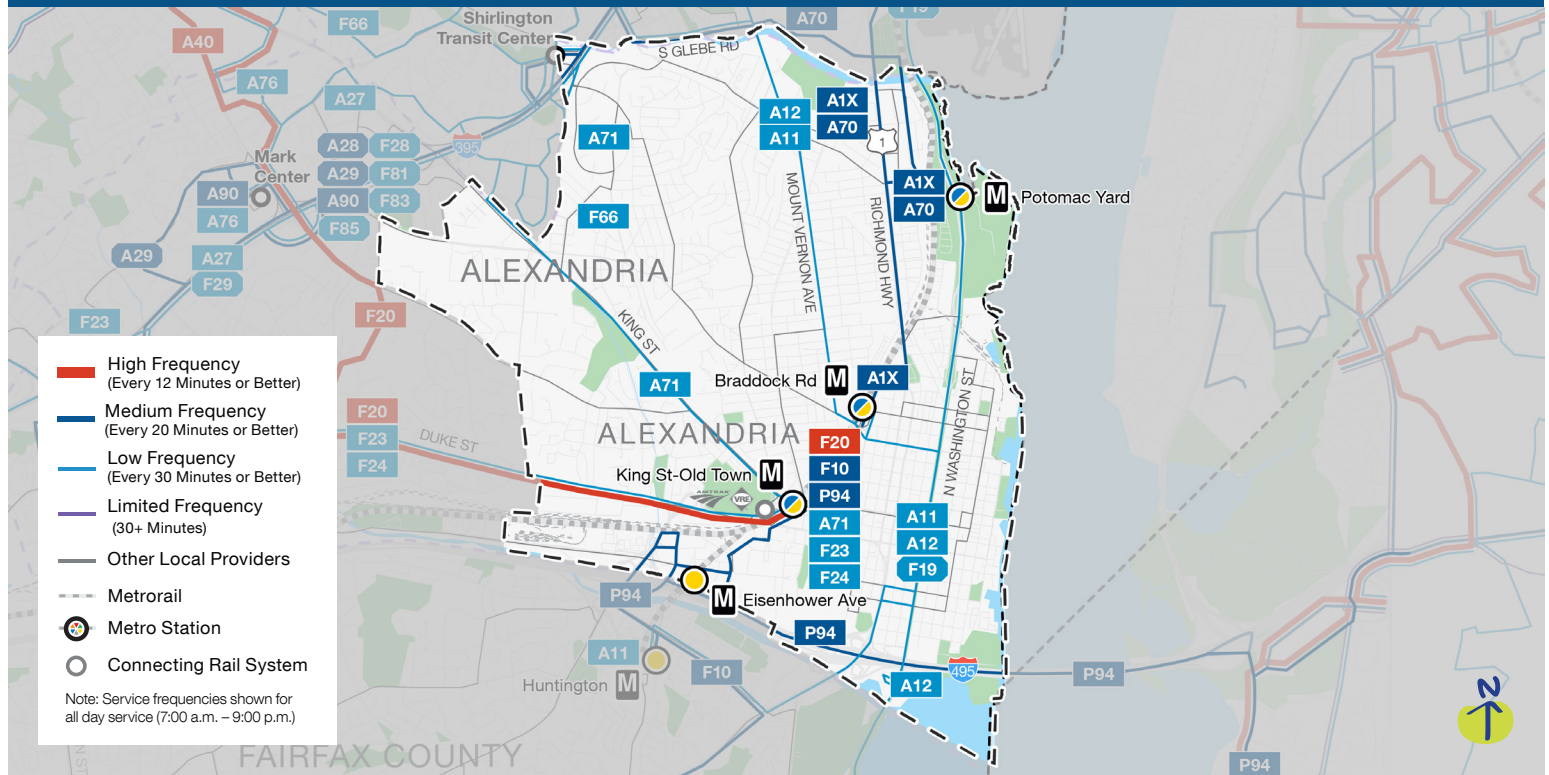
Service is more direct, reduces duplication and is easier to understand:

- Maintained an enhanced network of commuter connections throughout Fairfax County



PROPOSED 2025 BETTER BUS NETWORK

Neighborhood Profile: Old Town & Rosemont



Improvements in Old Town & Rosemont



Better Connections

New direct connections between King St-Old Town Station, South Fairlington, Ballston, National Harbor, and Suitland



Longer Operating Hours

Earlier Saturday morning service between Pentagon and Huntington



Maximized Resources

Routes consolidated to improve connections across jurisdictions



What this means for Old Town & Rosemont

Better Connections

New connections will get you to more places faster and easier, including:

- **A70** offers a new connection from Arna Valley, Buckingham, and Green Valley neighborhoods to Potomac Yard
- **A71** offers new connections between Ballston, Shirlington, South Fairlington, and King St-Old Town Station
- **P94** offers new connections between King St-Old Town Station, National Harbor, and Suitland

Longer Operating Hours

Customers told us – and the data shows – that people want and need service during the middle of the day, in the evenings, and on weekends.

- **A11** provides earlier Saturday morning service between Pentagon and Huntington

Maximized Resources

Service is more direct, reduces duplication and is easier to understand:

- **P94** consolidates routes to improve connections across jurisdictional boundaries

7% (2.4k) more trips
have a convenient transit
option

This map compares how far you can travel from Alexandria City High School on transit using the existing network (red) and the proposed network (purple).

A farther reach means that you can get to more jobs and other key destinations.

