



# Proposed 2025 Better Bus Network

The proposed 2025 Better Bus Network represents Metro's commitment to improving service and connections using the resources we have today. By changing bus routes and service times, this network better connects the region, increases access to better bus service, and makes the bus more convenient.

## The Proposed 2025 Network At A Glance



28 routes in the 20-minute frequent service network (47% increase from existing)



Prioritizing service in Equity Focus Communities (EFCs)



Service and route names that are easier to understand



Direct, frequent routes



Connects customers to key destinations and transit hubs



More service during evenings and weekends

## The Proposed 2025 Network...

Could attract **13,000** more daily weekday trips and 10K more weekend trips

Avoiding **4,300** metric tons of GHG emissions a year

Residents will be able to access an additional

**12,000** jobs

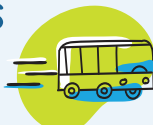


within 60 minutes on transit during the morning rush.

During the weekday morning rush, about

**14,000** residents of EFCs

will gain access to high-frequency bus service.



More than

**146,000** customers



will gain access to high-frequency evening service 7 days a week.

Existing transit passengers will save a combined

**10,000** hours every weekday

with more direct and more frequent service.

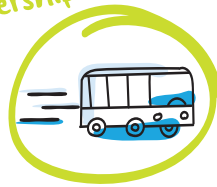


Learn more about the network in MD



# The Proposed 2025 Better Bus Network in Maryland...

Grows Bus  
Ridership



Could attract  
**3k** weekday  
**1k** Saturday and Sunday  
**Additional Trips**



## Better connects the region

- Residents will be able to access more jobs within 60 minutes on transit

**+15K during the AM rush**  
**+5K on the weekends**

- 50K more residents will be able to access a hospital within 30 minutes on transit during AM rush
- 28K more residents will be able to access a college within 30 minutes on transit during weekdays



## Advances access to opportunity for EFCs

- 47K residents of EFCs in Maryland will gain access to high-frequency service during the AM rush
- Accessibility to jobs, colleges, grocery stores, and other important destinations will improve more for residents of Maryland EFCs than for Maryland residents as a whole



## Improves access to bus service in evenings and on the weekends

- More residents will have access to service on the weekends

**+25K more on Saturdays**  
**+49K more on Sundays**

- Approximately 60K residents will gain access to high-frequency bus service during evenings



## Makes the bus more convenient to use

- Improvements will save bus customers in Maryland 3K hours every weekday
- 3–4% more of the trips that start in Maryland will be convenient to take by transit

## Examples of New and Improved Connections in Maryland

- Improved connections for Suitland:** including new connections to New Carrollton, National Harbor, King St-Old Town, and Largo
- Better connections to National Harbor:** including direct service to King St-Old Town, Suitland, and Navy Yard/L'Enfant Plaza
- Major increase in service to White Oak Medical Center:** especially by extending high-frequency service on New Hampshire Avenue
- Major increase in service to Laurel:** including the addition of weekend service
- Realigned existing services in Montgomery County to coordinate with future Ride On services