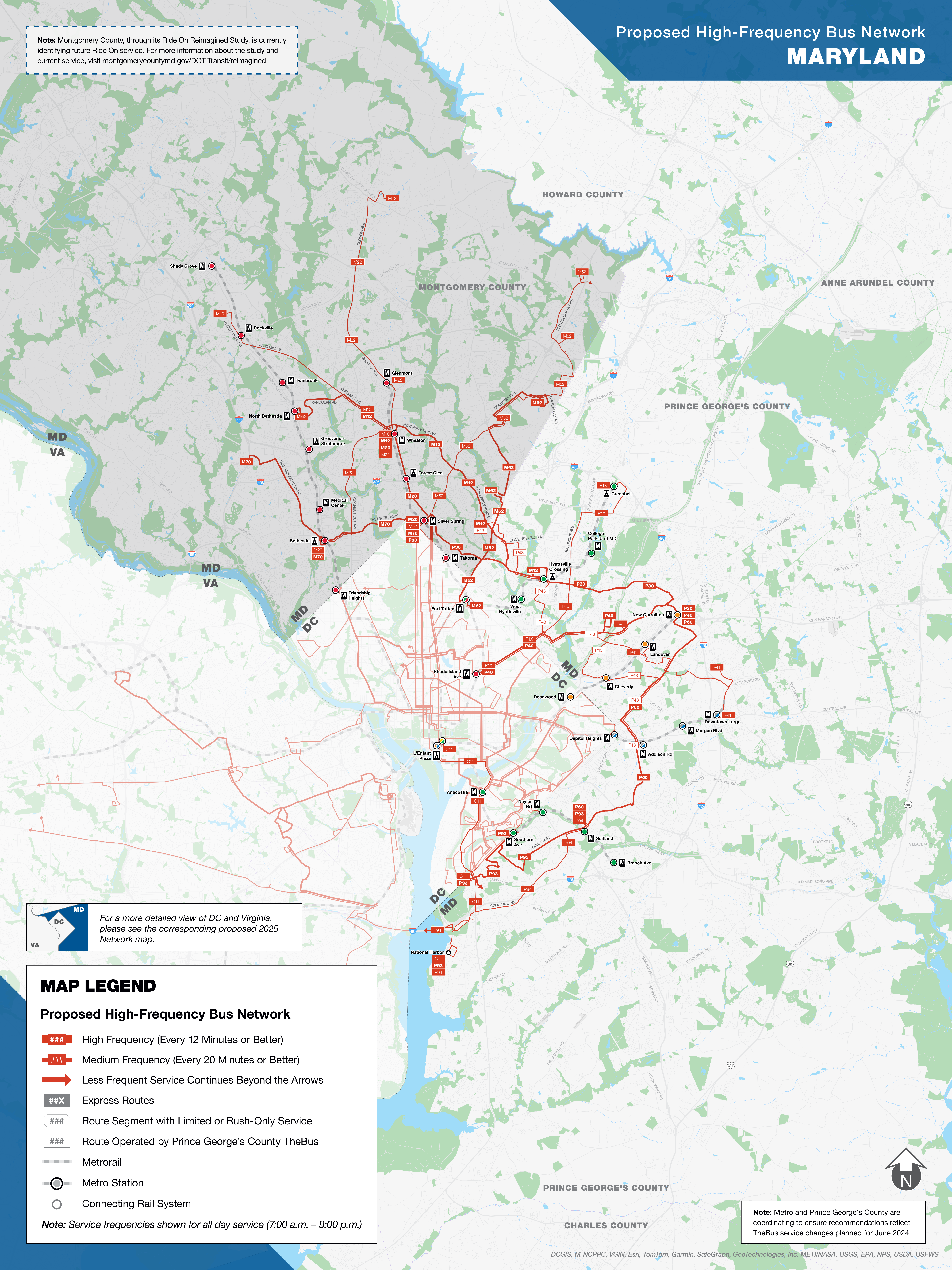


**Note:** Montgomery County, through its Ride On Reimagined Study, is currently identifying future Ride On service. For more information about the study and current service, visit [montgomerycountymd.gov/DOT-Transit/reimagined](https://montgomerycountymd.gov/DOT-Transit/reimagined)

Proposed High-Frequency Bus Network  
**MARYLAND**



**MD**  
**DC**  
**VA**

For a more detailed view of DC and Virginia, please see the corresponding proposed 2025 Network map.

**MAP LEGEND**

**Proposed High-Frequency Bus Network**

- ### High Frequency (Every 12 Minutes or Better)
- ### Medium Frequency (Every 20 Minutes or Better)
- ➔ Less Frequent Service Continues Beyond the Arrows
- ##X Express Routes
- ### Route Segment with Limited or Rush-Only Service
- ### Route Operated by Prince George's County TheBus
- Metrorail
- Metro Station
- Connecting Rail System

*Note: Service frequencies shown for all day service (7:00 a.m. – 9:00 p.m.)*

**Note:** Metro and Prince George's County are coordinating to ensure recommendations reflect TheBus service changes planned for June 2024.