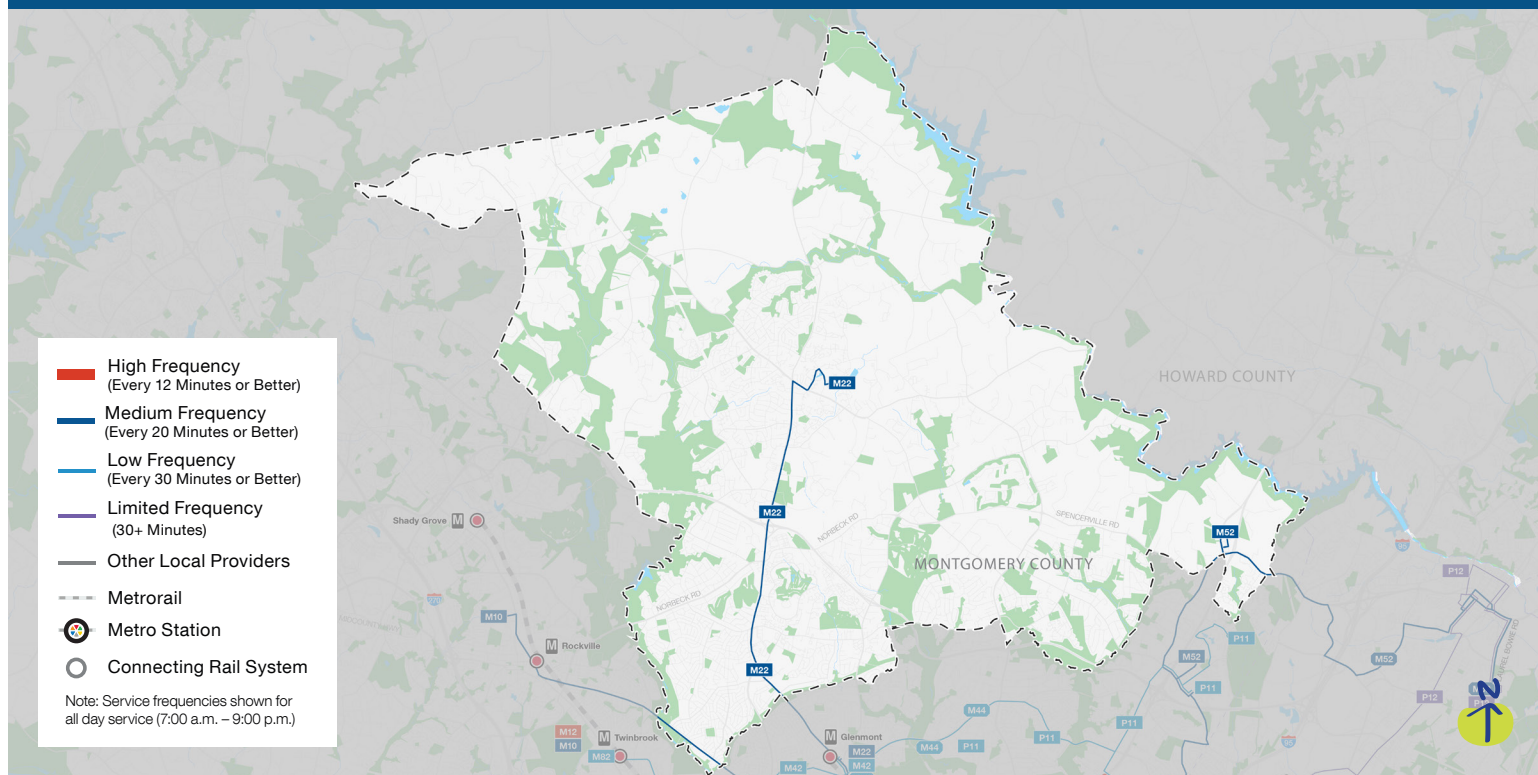


# PROPOSED 2025 BETTER BUS NETWORK

## Neighborhood Profile: Aspen Hill & Olney



### Improvements in Aspen Hill & Olney



#### Better Connections

New service connecting Olney, Aspen Hill, Wheaton and Bethesda



#### Maximized Resources

Coordinated service between Ride On and Metrobus reduces duplication between Olney and Bethesda



# What this means for Aspen Hill & Olney

## Better Connections

New connections will get you to more places faster and easier, including:

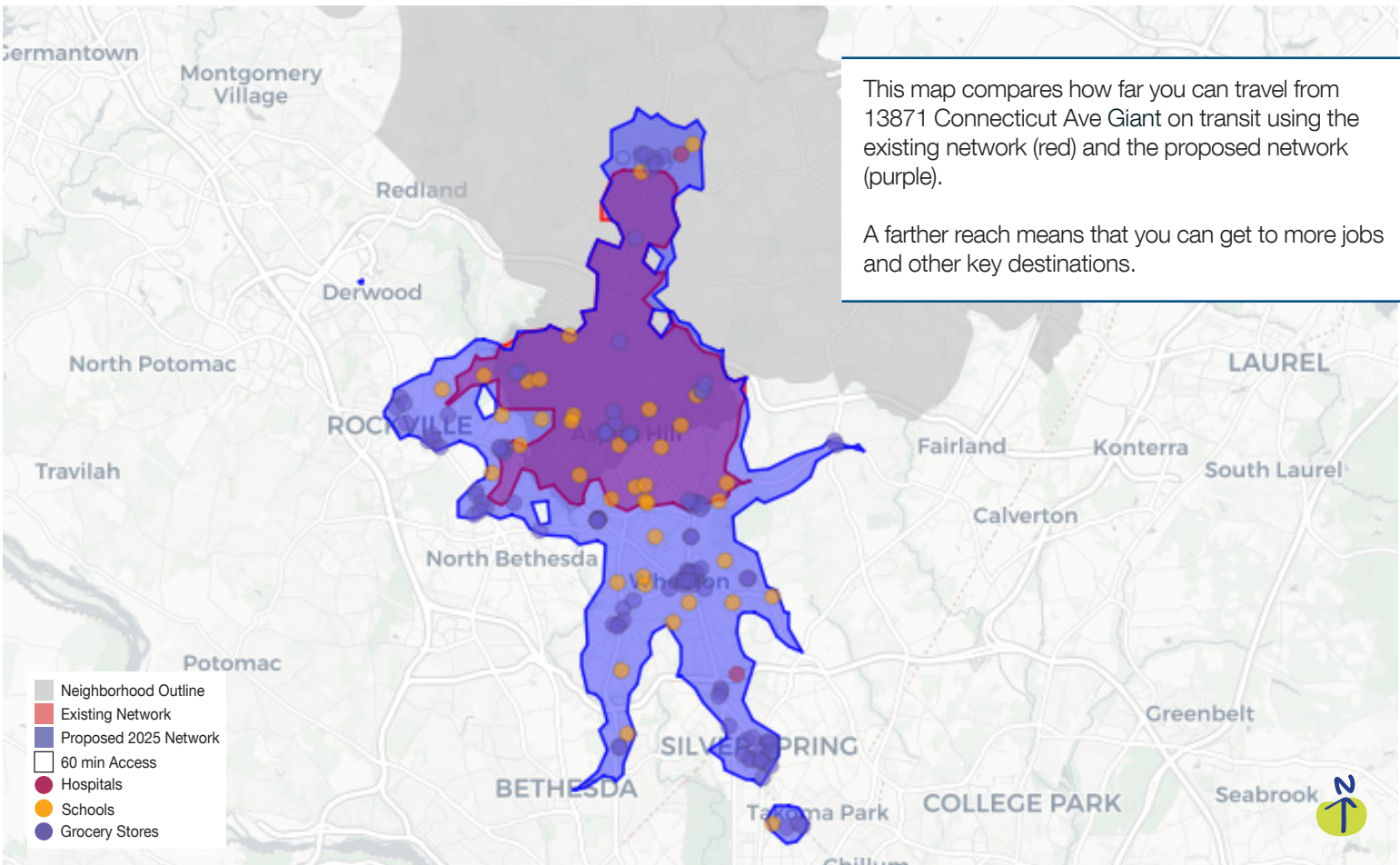
- **M22** offers new cross-county service between Olney, Aspen Hill, Wheaton, and Bethesda, with service to Silver Spring available on route M20

**On average, a customer can access 8,900 (19%) more jobs on weekdays**

## Maximized Resources

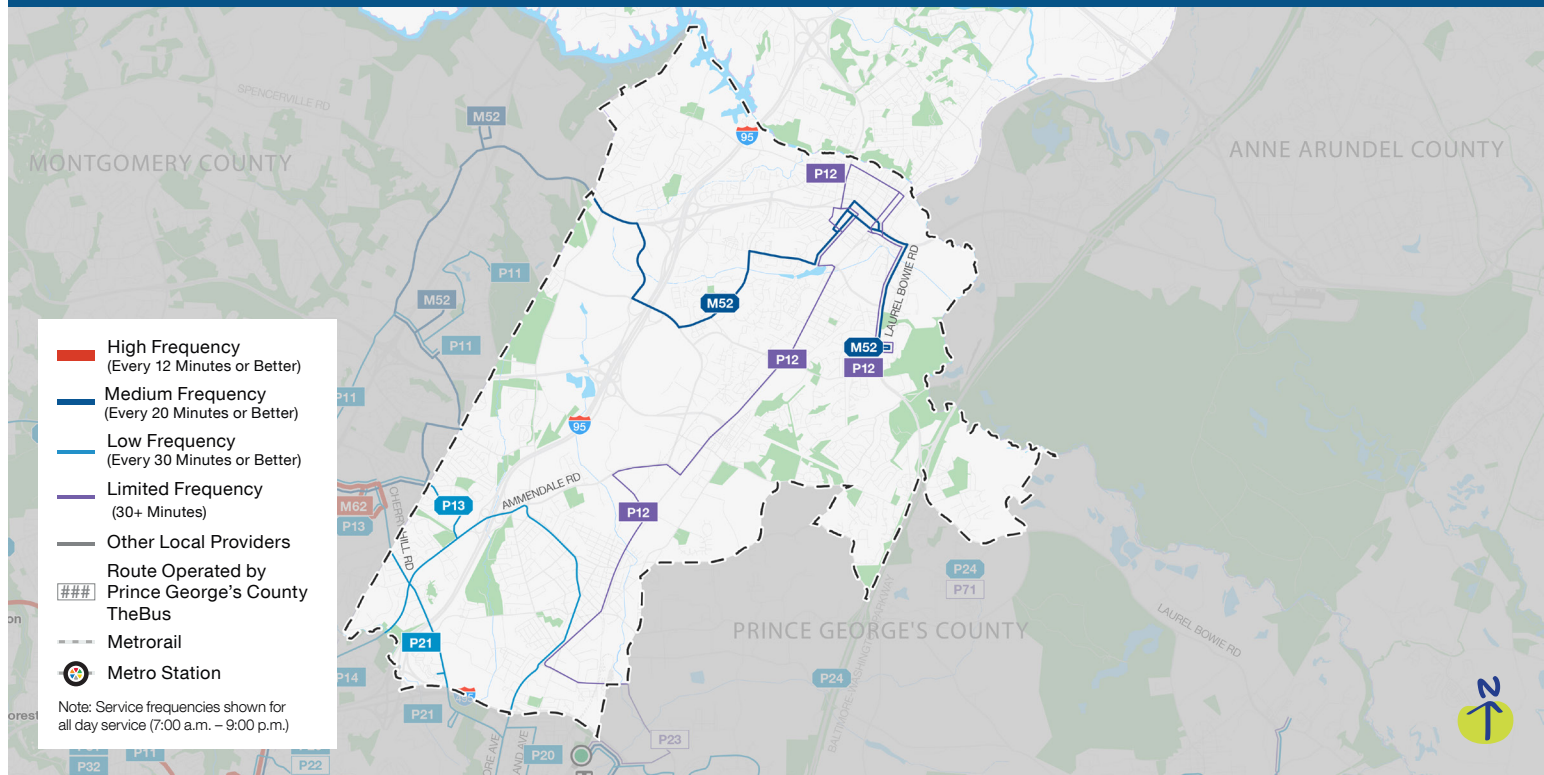
Service is more direct, reduces duplication and is easier to understand:

- Coordinated service between Ride On and Metrobus reduces duplication between Olney and Bethesda
- Access to Silver Spring is maintained by new route M20 between Wheaton and Silver Spring stations
- Z2 service and L8 service discontinued with resources invested into other service, impacting Olney and Aspen Hill, respectively



# PROPOSED 2025 BETTER BUS NETWORK

## Neighborhood Profile: Beltsville & Laurel



### Improvements in Beltsville & Laurel



#### Improved Frequency

More frequent service on three routes serving Beltsville, Laurel, or Greenbelt



#### Better Connections

New service connecting Beltsville & Laurel to Glenmont, the Route 1 Corridor, White Oak Medical Center, and Greencastle



#### Longer Operating Hours

Longer operating hours on two routes, including new weekend service from Laurel to Greenbelt



#### Maximized Resources

Significantly improved service to Laurel with improved weekday frequency and span as well as new Saturday and Sunday service.

Proposed service in Prince George's County will be operated by Metrobus and TheBus





# What this means for Beltsville & Laurel

Proposed service in Prince George's County will be operated by Metrobus and TheBus

## Improved Frequency

You told us that increasing frequency and decreasing wait time is your top priority.

So we're offering more frequent service on three routes, including:

- **P12** improves rush hour frequency between Laurel and Greenbelt
- **M44** improves weekday midday and Saturday frequency between Colesville and College Park as well as Sunday frequency between Cherry Hill Park Campground and College Park

800 more people can access 20-minute or better service on weekdays

## Better Connections

New connections will get you to more places faster and easier, including:

- **P11** offers new connections between Greencastle, White Oak Medical Center, Beltsville, the Route 1 corridor, and Hyattsville Crossing
- **M44** offers new weekday connections to Glenmont from Cherry Hill Road via Route 1
- **M52** offers new connection between Laurel and the White Oak Medical Center, with limited stop connections from Burtonsville and Briggs Chaney to Silver Spring available on Ride On Flash

On average, a customer can access 9,400 (48%) more jobs on weekdays

## Longer Operating Hours

Customers told us – and the data shows – that people want and need service during the middle of the day, in the evenings, and on weekends.

Two routes provide improved midday, evening or weekend service:

- **P12** provides longer weekday span and new weekend service between Laurel and Greenbelt
- **P13** provides later service on weekdays, Saturdays, and Sundays between White Oak Transit Center and Fort Totten

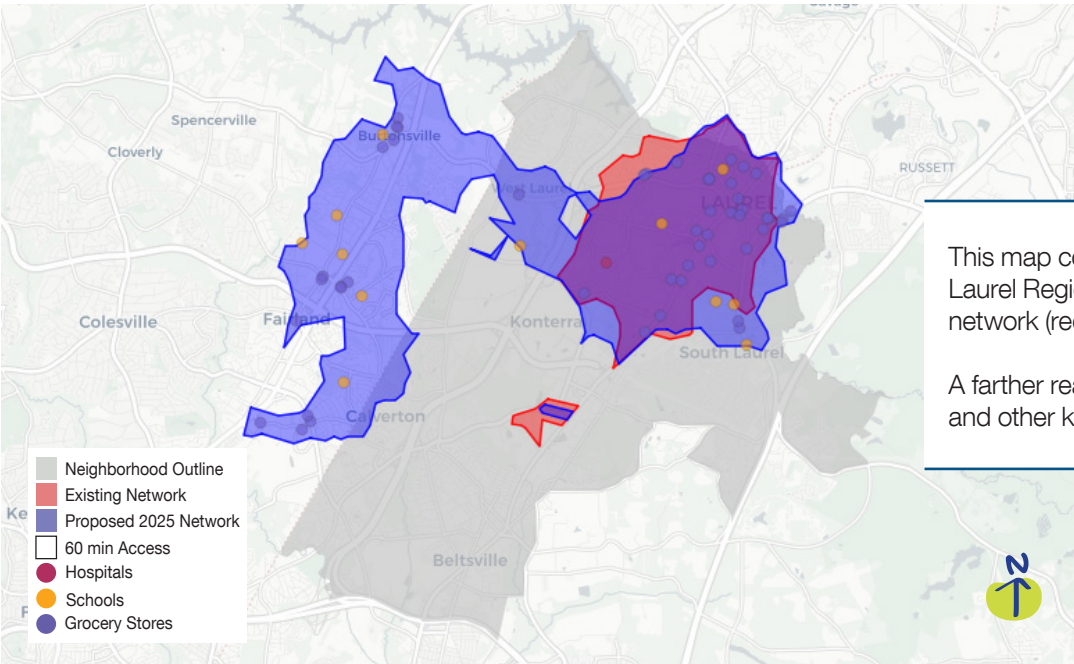
6,450 (170%) more people can access 30-minute or better service on weekends

## Maximized Resources

Service is more direct, reduces duplication and is easier to understand:

- Significantly improved service to Laurel with improved weekday frequency and span as well as new Saturday and Sunday service

14% (1.6k) more trips have a convenient transit option



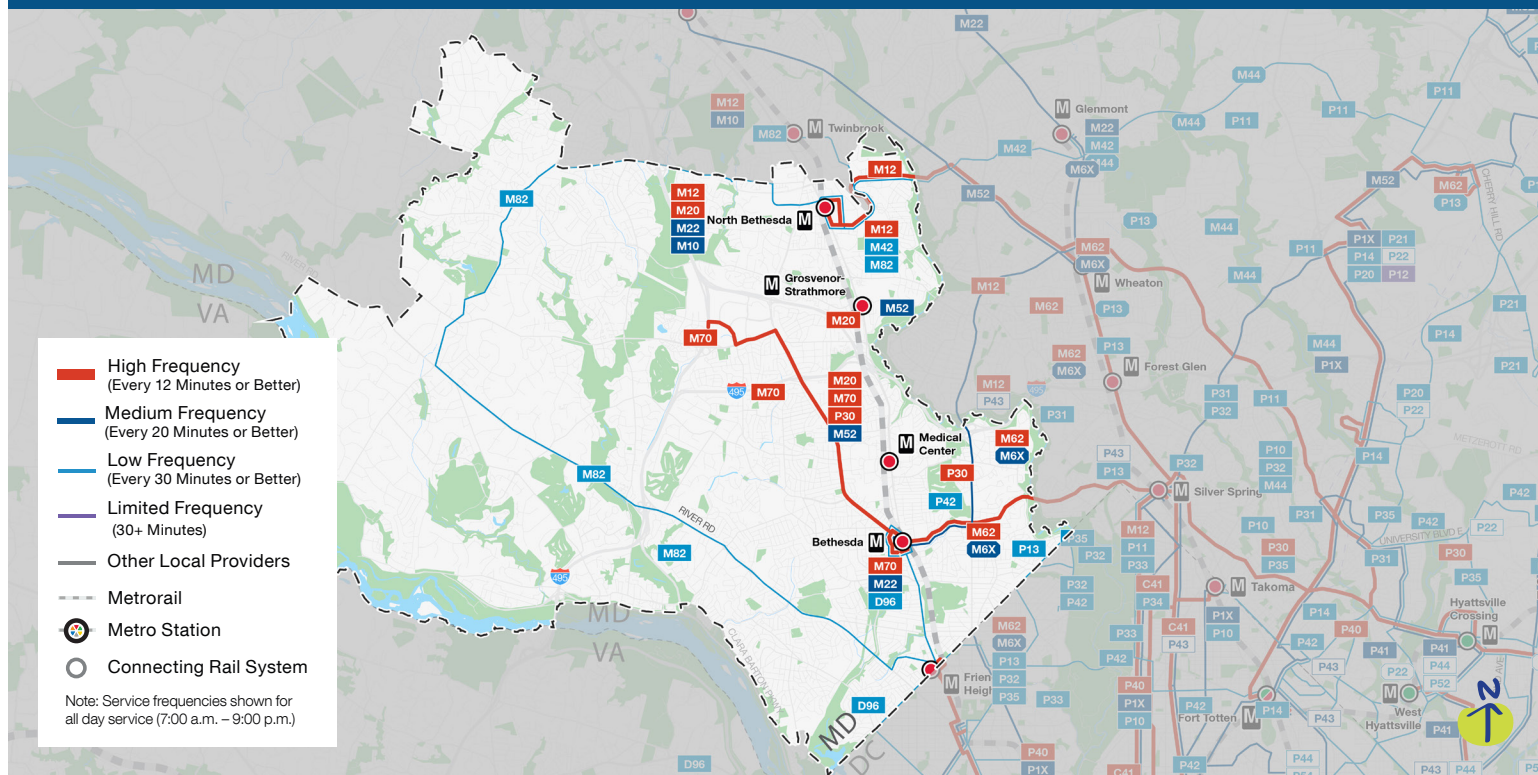
This map compares how far you can travel from Laurel Regional Hospital on transit using the existing network (red) and the proposed network (purple).

A farther reach means that you can get to more jobs and other key destinations.



# PROPOSED 2025 BETTER BUS NETWORK

## Neighborhood Profile: Bethesda, Potomac & North Bethesda



## Improvements in Bethesda, Potomac & North Bethesda



### Better Connections

New service connecting Bethesda, Ward Circle, Glover Park, and Potomac Park



### Maximized Resources

J1 and J2 combined into a high frequency route connecting Montgomery Mall, Bethesda, and Silver Spring



# What this means for Bethesda, Potomac & North Bethesda

## Better Connections

New connections will get you to more places faster and easier, including:

- **M12** realigns the existing Route C4 to offer new connections between Hyattsville Crossing and North Bethesda stations
- **M22** offers new cross-county service between Bethesda, Wheaton, Aspen Hill, and Olney, with service to Silver Spring available on route M20
- **D96** offers new connections between Bethesda, Ward Circle, Glover Park, and Potomac Park

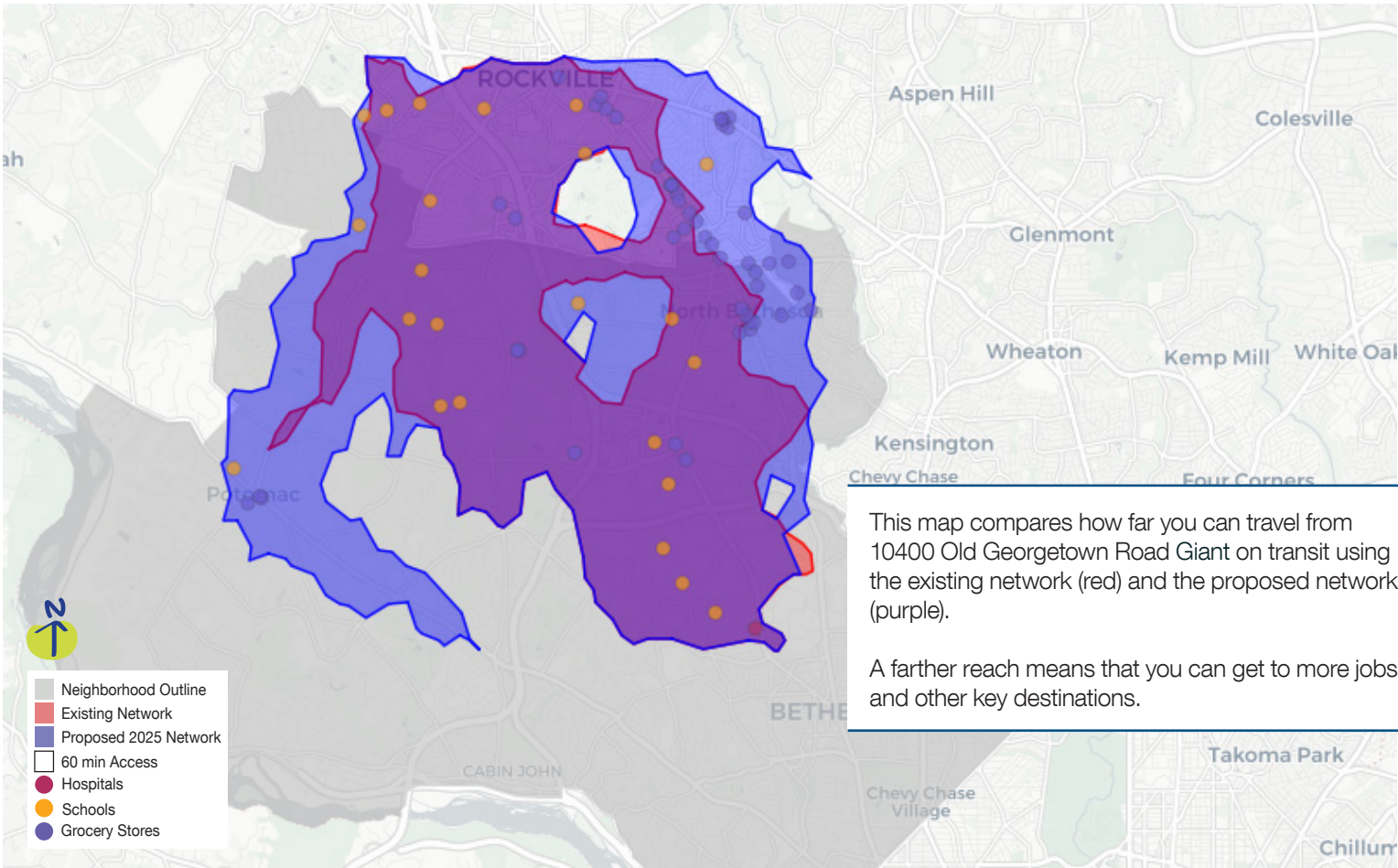
On average, a customer can access 15,100 (4.8%) more jobs on weekdays

## Maximized Resources

Service is more direct, reduces duplication and is easier to understand:

- **M70** combines streamlines the existing J1 and J2 into one high frequency route connecting Montgomery Mall, Bethesda, and Silver Spring. Medical Center Station is no longer served due to low ridership at that location and a long diversion from higher demand areas.

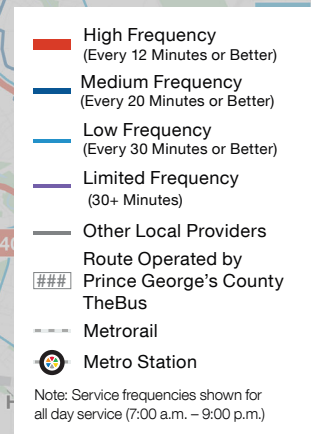
3% (4.8k) more trips have a convenient transit option





# PROPOSED 2025 BETTER BUS NETWORK

## Neighborhood Profile: Bladensburg & New Carrollton



## Improvements in Bladensburg & New Carrollton



## Improved Frequency

More frequent service  
on three routes serving  
New Carrollton,  
Takoma and Takoma  
Langley



## Better Connections

New service offers  
a direct connection  
between Cheverly and  
Greenbelt



## Longer Operating Hours

New midnight  
service between  
New Carrollton and  
Takoma Langley and to  
UMD-College Park on  
weekends



## Maximized Resources

Coordinated service  
creates more direct  
routes and improved  
connectivity

Proposed service in Prince George's County will be operated by Metrobus and TheBus





# What this means for Bladensburg & New Carrollton

Proposed service in Prince George's County will be operated by Metrobus and TheBus

## Improved Frequency

You told us that increasing frequency and decreasing wait time is your top priority.

So we're offering more frequent service on three routes, including:

- **P14** improves midday, evening, and Saturday frequency between Greenbelt and Deanwood
- **P42** improves weekday and weekend frequency between Takoma and New Carrollton

**1,400 (4%) more people can access 20-minute or better service on weekdays**

## Better Connections

New connections will get you to more places faster and easier, including:

- **P22** offers new direct connection between Cheverly and Greenbelt
- **P20** offers new connections from Lanham Severn Road to Greenbelt while maintaining connections to Bowie State University with a transfer to P24
- **P42** offers new connections between New Carrollton and Takoma via Fort Lincoln and Mount Rainier

**On average, a customer can access 12,900 (8.8%) more jobs on weekdays**

## Longer Operating Hours

Customers told us – and the data shows – that people want and need service during the middle of the day, in the evenings, and on weekends.

Three routes provide improved midday, evening or weekend service:

- **P31** extends service to midnight and establishes new weekend service between UMD-College Park and New Carrollton
- **P24** provides new weekend service between Bowie State University and New Carrollton via Lanham as well as longer weekday span and weekday midday service

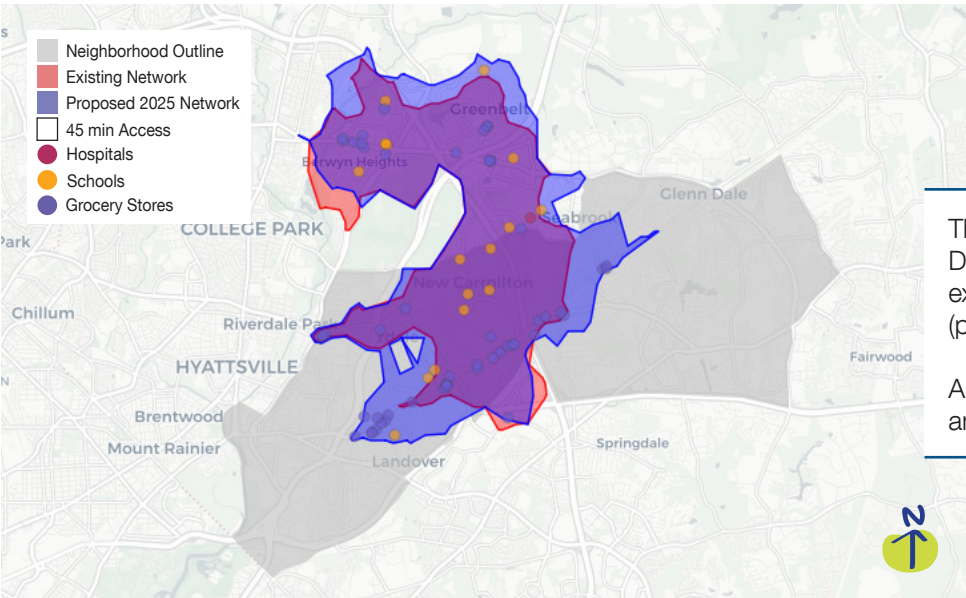
**22,650 (51%) more people can access 30-minute or better service on weekends**

## Maximized Resources

Service is more direct, reduces duplication and is easier to understand:

- Coordinates existing Metrobus and TheBus services to create more direct routes and improve connectivity
- New routing for P20 and P24 eliminates doubling back on Greenbelt Road between Good Luck Road and Mission Drive.

**7% (3k) more trips have a convenient transit option**

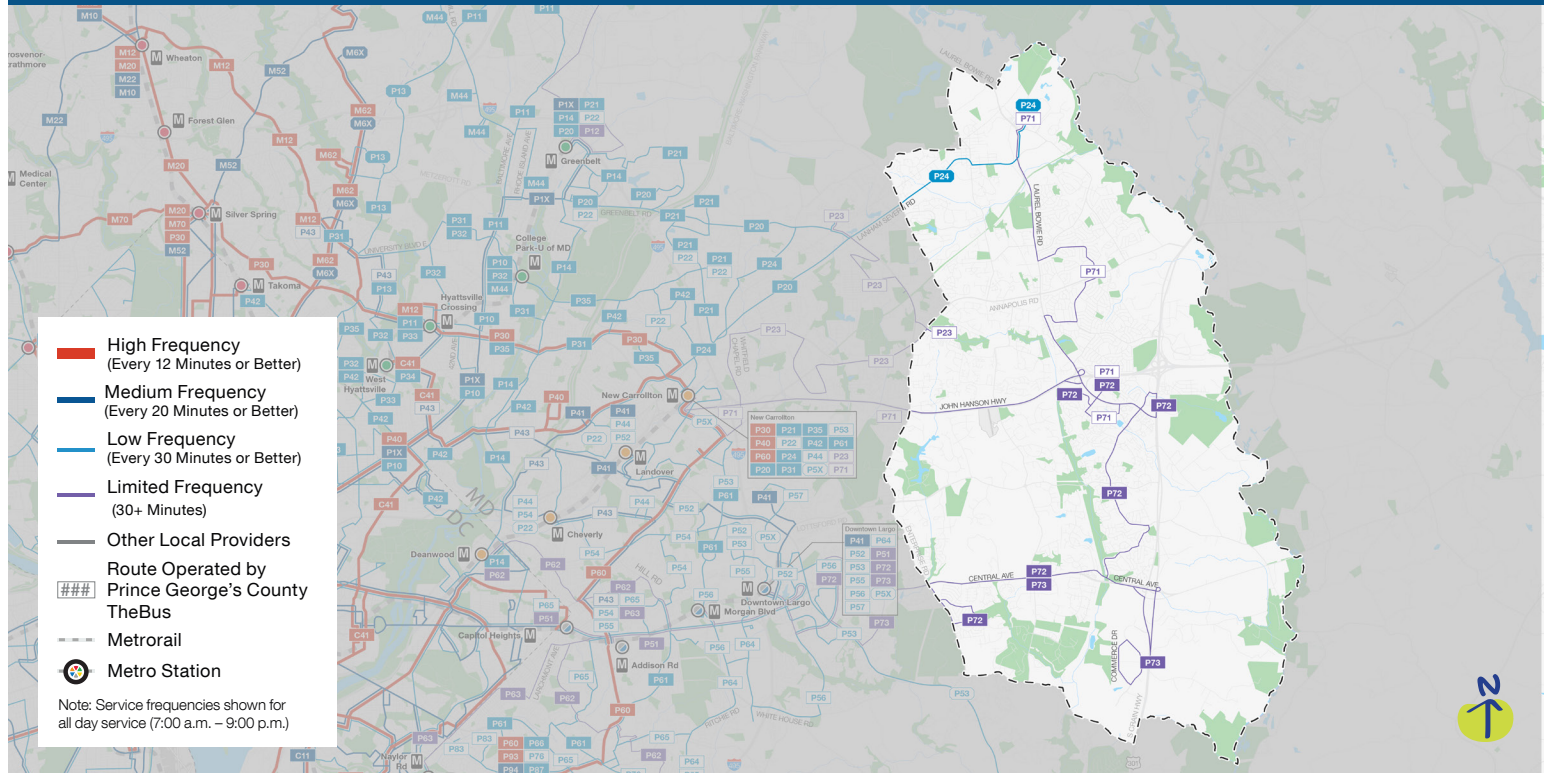


This map compares how far you can travel from Doctor's Community Hospital on transit using the existing network (red) and the proposed network (purple).

A farther reach means that you can get to more jobs and other key destinations.

# PROPOSED 2025 BETTER BUS NETWORK

## Neighborhood Profile: Bowie & Mitchellville



## Improvements in Bowie & Mitchellville



### Improved Frequency

More frequent service on three routes serving Good Luck Road, Bowie, Downtown Largo and Collington



### Better Connections

New service on Mitchellville Road in Bowie.



### Longer Operating Hours

Longer operating hours all days between Bowie State University and New Carrollton



### Maximized Resources

Routes redesigned to simplify service on Central Avenue

Proposed service in Prince George's County will be operated by Metrobus and TheBus



# What this means for Bowie & Mitchellville

Proposed service in Prince George's County will be operated by Metrobus and TheBus

## Improved Frequency

You told us that increasing frequency and decreasing wait time is your top priority.

So we're offering more frequent service on three routes:

- **P24** improves weekday frequency on service between Bowie State University and New Carrollton via Lanham and improves midday and weekend frequency on Good Luck Road
- **P71** improves midday frequency between Bowie State and New Carrollton via Bowie
- **P73** improves morning and afternoon rush frequency between Downtown Largo and Collington

## Better Connections

New connections will get you to more places faster and easier, including:

- **P24** offers consistent service between Bowie and New Carrollton throughout the day as well as a new connection between Good Luck Road and Bowie State University while maintaining connections from Good Luck Road to Greenbelt with a transfer to P20
- **P72** offers new service on Mitchellville Road

On average, a customer can access 500 (7%) more jobs on weekdays

## Longer Operating Hours

Customers told us – and the data shows – that people want and need service during the middle of the day, in the evenings, and on weekends.

Two routes provide improved midday, evening or weekend service:

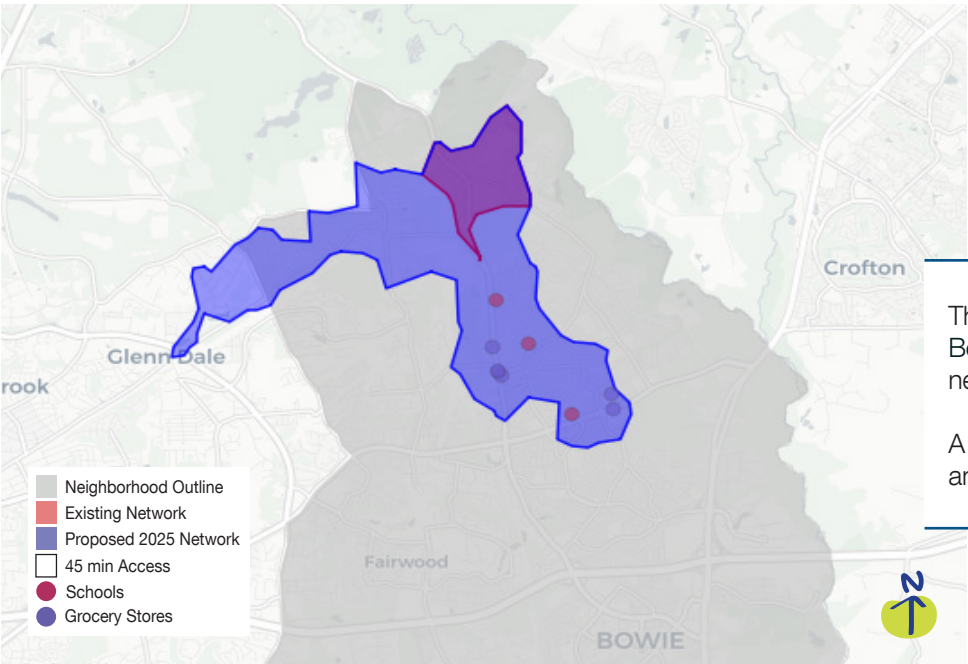
- **P24** provides midday and weekend service between Bowie State and New Carrollton
- **P72** provides new Sunday service along Lake Arbor Way

## Maximized Resources

Service is more direct, reduces duplication and is easier to understand:

- Streamlines bus service on Central Avenue

4% (650) more trips have a convenient transit option

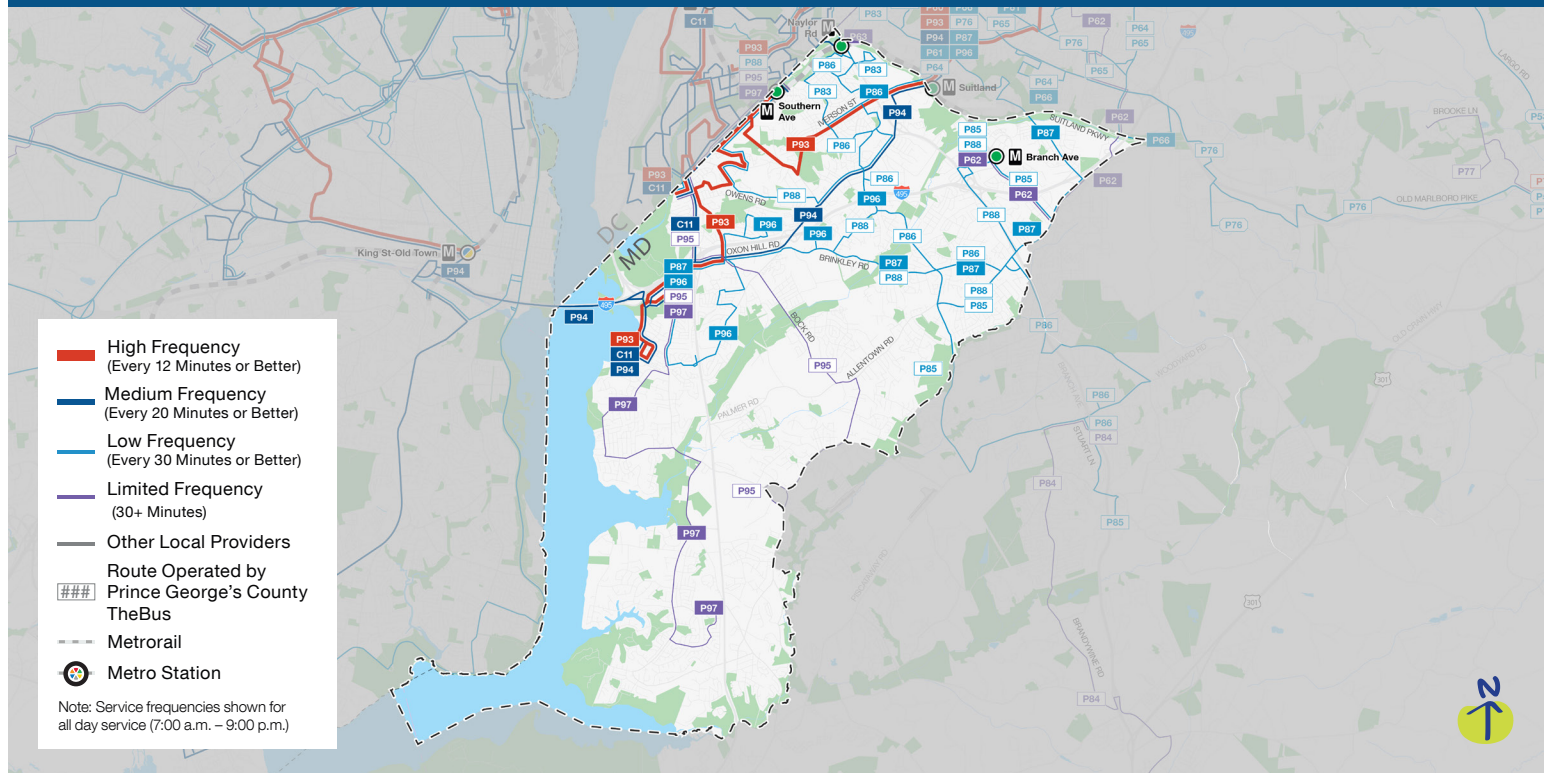


This map compares how far you can travel from Bowie State University on transit using the existing network (red) and the proposed network (purple).  
  
A farther reach means that you can get to more jobs and other key destinations.



# PROPOSED 2025 BETTER BUS NETWORK

## Neighborhood Profile: Branch Avenue & Fort Washington



## Improvements in Branch Avenue & Fort Washington



### Improved Frequency

More frequent service on three routes between Southern Avenue and National Harbor, along Oxon Hill Road and St. Barnabas Road



### Better Connections

New service connecting southern Prince George's County, Penn Mar Shopping Center, and the Blue, Orange, Silver, and Green Lines



### Longer Operating Hours

Longer operating hours on four routes, including new weekend service between Naylor Road, Congress Heights, Washington Highlands, and Bellevue



### Maximized Resources

Routes consolidated to improve connections across jurisdictions

**Proposed service in Prince George's County will be operated by Metrobus and TheBus**



# What this means for Branch Avenue & Fort Washington

Proposed service in Prince George's County will be operated by Metrobus and TheBus

## Improved Frequency

You told us that increasing frequency and decreasing wait time is your top priority.

So we're offering more frequent service on three routes, including:

- **P93** improves frequency between Southern Avenue and National Harbor on weekdays and weekends
- **P96** improves midday, evening, and weekend frequency between Oxon Hill High School and Oxon Hill Park & Ride

With these route specific improvements, 94% of people retain access to 20-minute or better service on weekdays

## Better Connections

New connections will get you to more places faster and easier, including:

- **P62** offers new connections between southern Prince George's County, Penn Mar Shopping Center, and the Orange, Blue, Silver, and Green Lines
- **P94** offers new connections between Suitland, National Harbor, and King St-Old Town Station in Alexandria
- **C11** offers new connections across Maryland and DC between National Harbor, Eastover, Anacostia, and L'Enfant Plaza

On average, a customer can access 17,800 (15%) more jobs on weekdays

## Longer Operating Hours

Customers told us – and the data shows – that people want and need service during the middle of the day, in the evenings, and on weekends.

Four routes provide improved midday, evening or weekend service, including:

- **P83** provides new bidirectional rush hour service and midday service in Hillcrest Heights and new Saturday service between Naylor Road Station and Capital Crossing Apartments
- **C27** provides new weekend service between Naylor Road, Congress Heights, Washington Highlands, and Bellevue

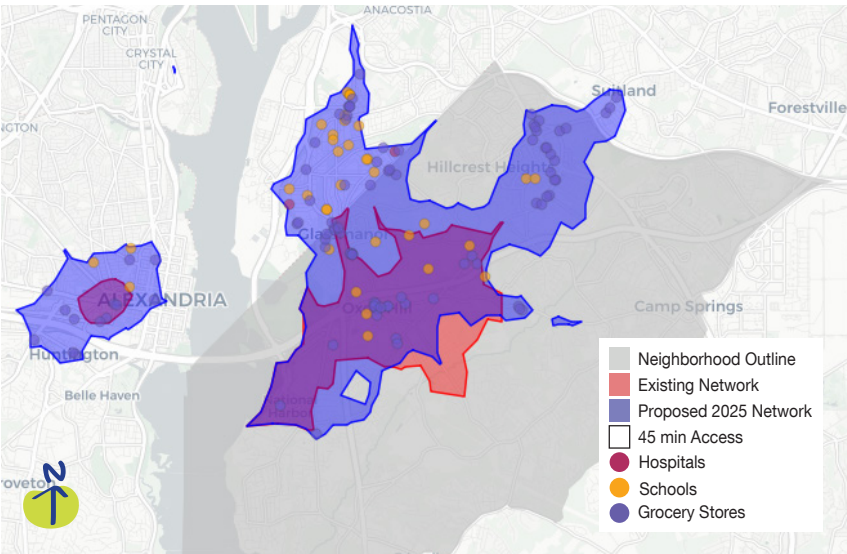
12,050 (33%) more people can access 30-minute or better service on weekends

## Maximized Resources

Service is more direct, reduces duplication and is easier to understand:

- Consolidates routes to improve connections across jurisdictional boundaries
- Removes low ridership segment between Friendly and Fort Washington Forest to improve service on the remaining route

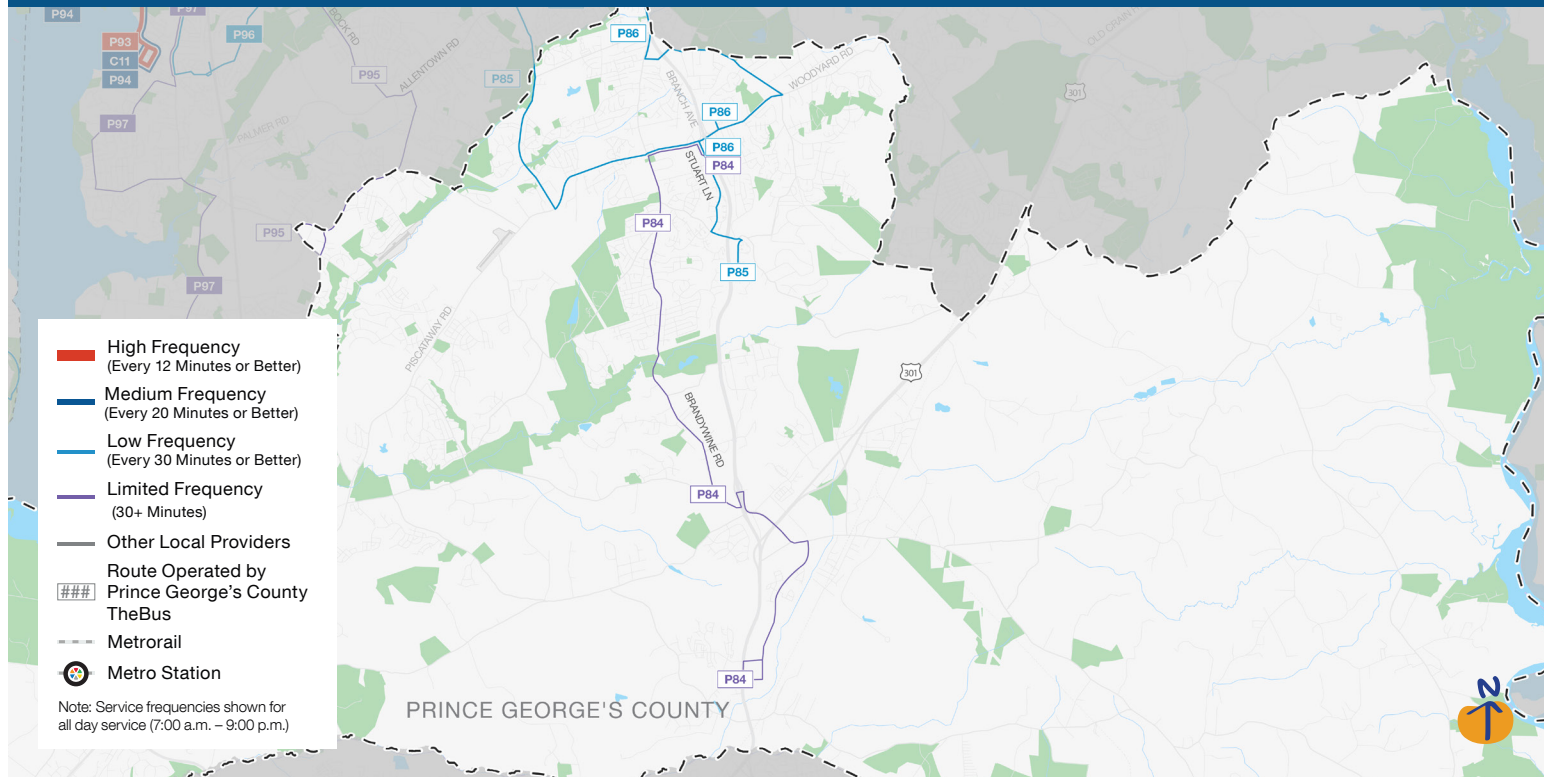
5% (2.1k) more trips have a convenient transit option



This map compares how far you can travel from National Harbor on transit using the existing network (red) and the proposed network (purple). A farther reach means that you can get to more jobs and other key destinations.

# PROPOSED 2025 BETTER BUS NETWORK

## Neighborhood Profile: Brandywine & Clinton

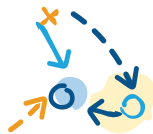


### Improvements in Brandywine & Clinton



#### Improved Frequency

More frequent service during the morning and evening rush



#### Better Connections

New service connecting Clinton to retail and the Hillcrest Heights Branch Library



#### Maximized Resources

Service consolidated and simplified

All service in Brandywine & Clinton will be operated by TheBus in the new network





# What this means for Brandywine & Clinton

All service in Brandywine & Clinton will be operated by TheBus in the new network

## Improved Frequency

You told us that increasing frequency and decreasing wait time is your top priority.

So we're offering more frequent service on one route:

- **P84** improves morning and evening rush frequency between Clinton and Brandywine

## Better Connections

New connections will get you to more places faster and easier, including:

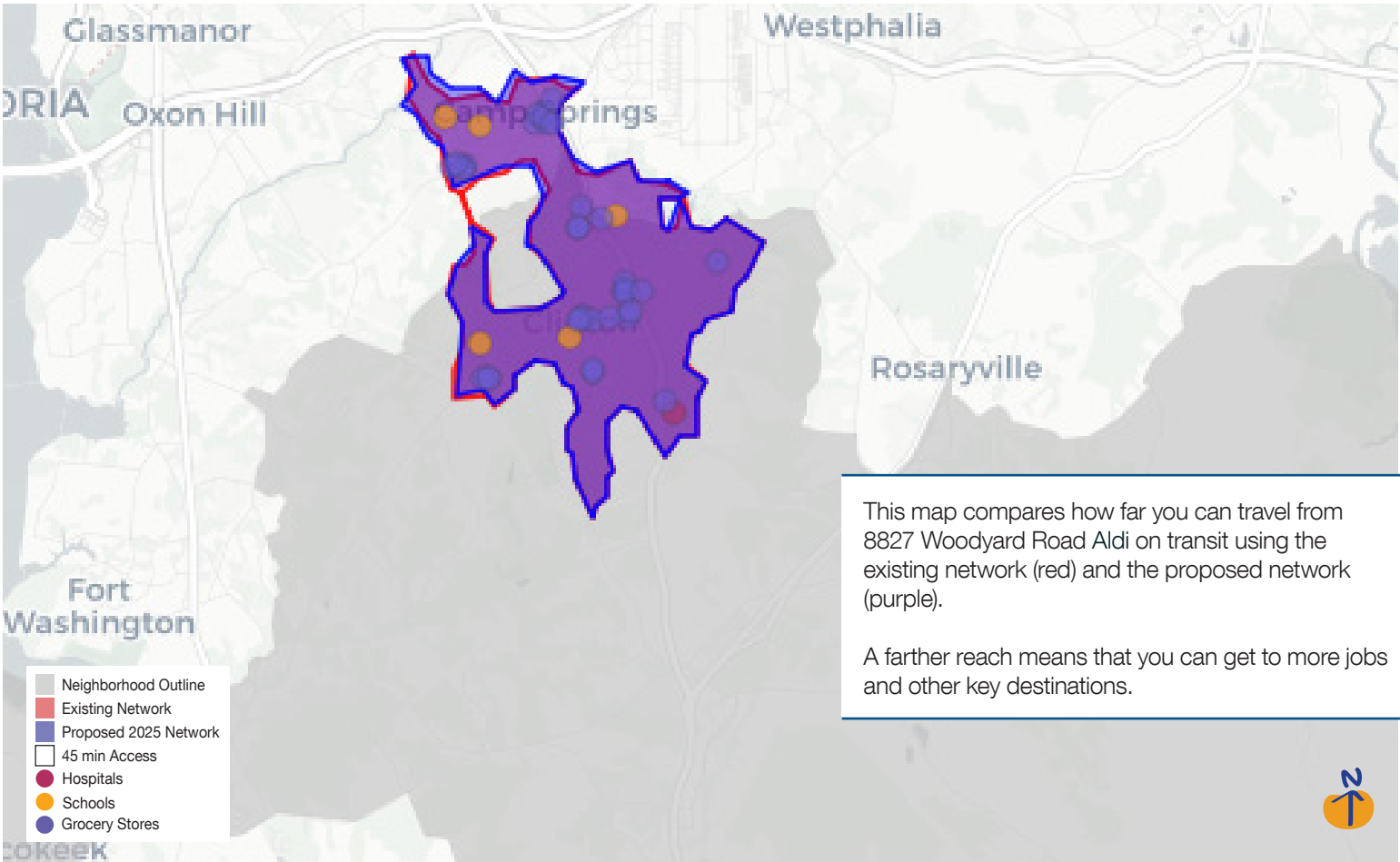
- **P86** offers new connections between Clinton and retail along Iverson Street and St Barnabas Road and the Hillcrest Heights Branch Library

On average, a customer can access 400 (8.5%) more jobs on weekdays

## Maximized Resources

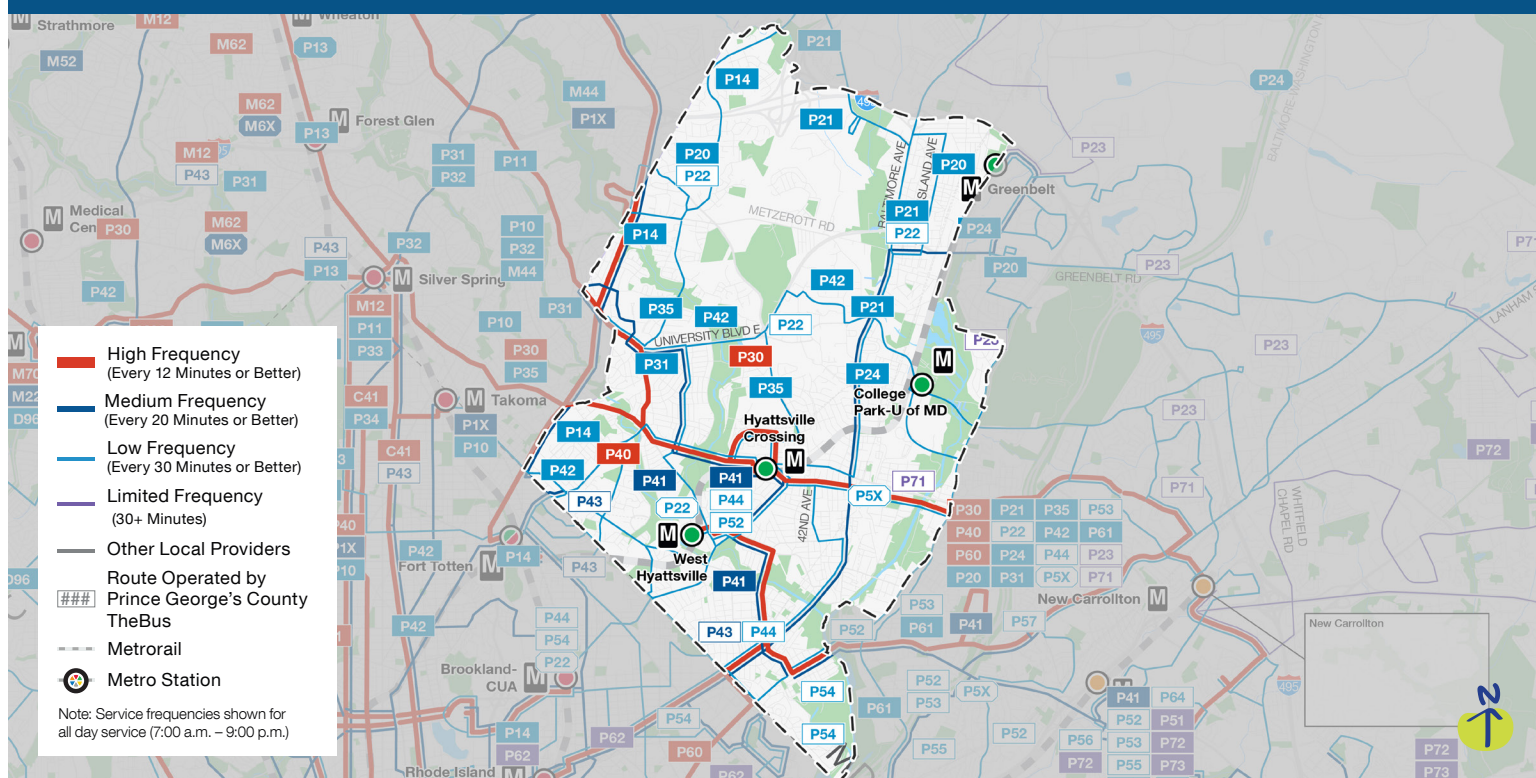
Service is more direct, reduces duplication and is easier to understand:

- **P86** maintains the high-performing 30 route that is currently operated by TheBus
- Consolidates service in Clinton to reduce duplication and simplify service patterns



# PROPOSED 2025 BETTER BUS NETWORK

## Neighborhood Profile: College Park & Hyattsville



### Improvements in College Park & Hyattsville



#### Improved Frequency

More frequent service on five routes serving College Park, Rhode Island Ave, and Hyattsville Crossing



#### Better Connections

New service connecting Greencastle, White Oak Medical Center, the Route 1 corridor, and Hyattsville Crossing



#### Longer Operating Hours

Longer operating hours on four routes, including midnight service between Rhode Island Ave and College Park



#### Maximized Resources

Routes redesigned to make direct connections between Hyattsville and Chillum

Proposed service in Prince George's County will be operated by Metrobus and TheBus



# What this means for College Park & Hyattsville

Proposed service in Prince George's County will be operated by Metrobus and TheBus

## Improved Frequency

You told us that increasing frequency and decreasing wait time is your top priority.

So we're offering more frequent service on five routes, including:

- **P32** improves midday frequency between College Park and Fort Totten
- **P33** improves frequency all week between Hyattsville Crossing and Brookland/CUA

**23,750 (42%) more people can access 20-minute or better service on weekdays**

## Better Connections

New connections will get you to more places faster and easier, including:

- **P11** offers new connections between Greencastle, White Oak Medical Center, the Route 1 corridor, and Hyattsville Crossing
- **P32** offers new connections between UMD-College Park, Riggs Park and Chillum
- **M12** offers new connections between West Hyattsville and North Bethesda

**On average, a customer can access 19,400 (6%) more jobs on weekdays**

## Longer Operating Hours

Customers told us – and the data shows – that people want and need service during the middle of the day, in the evenings, and on weekends.

Four routes provide improved midday, evening or weekend service, including:

- **P10** provides service until midnight on weekdays and Saturdays between Rhode Island Ave and College Park
- **P32** provides new weekend service on Ager Road

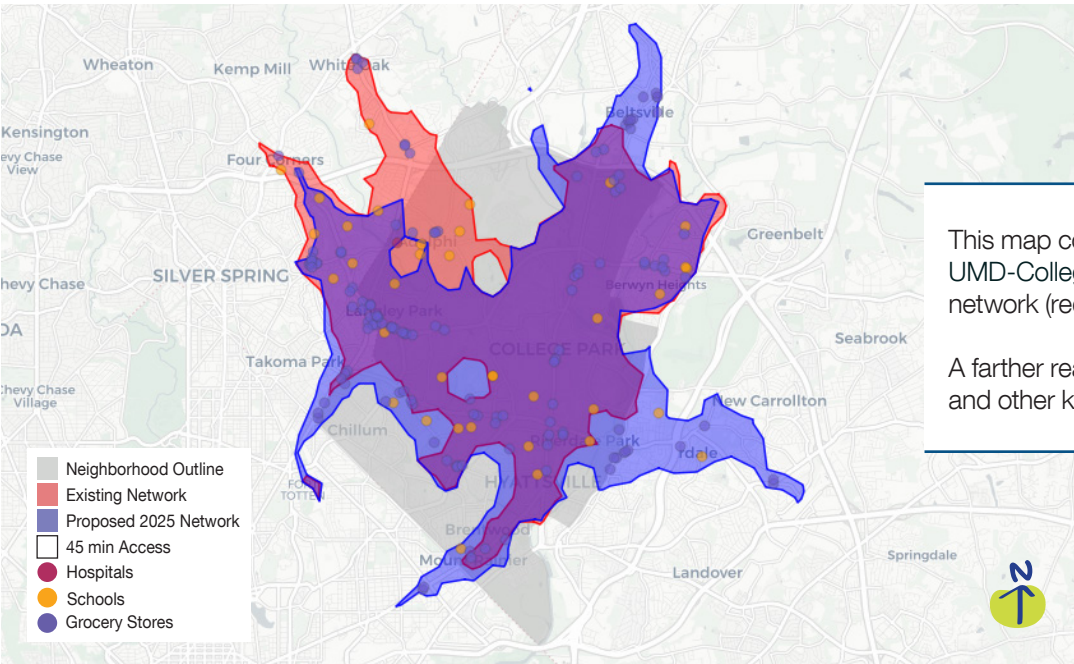
**42,450 (76%) more people can access 30-minute or better service on weekends**

## Maximized Resources

Service is more direct, reduces duplication and is easier to understand:

- Streamlines service along the Route 1 corridor
- Coordinates Metrobus and TheBus services to create more direct routes through Hyattsville and Chillum, and between Takoma Langlely Crossroads Transit Center and Cheverly
- Service to Highview is restructured to Toledo Terrace and Northwest Dr (P33)

**7% (5.7k) more trips have a convenient transit option**



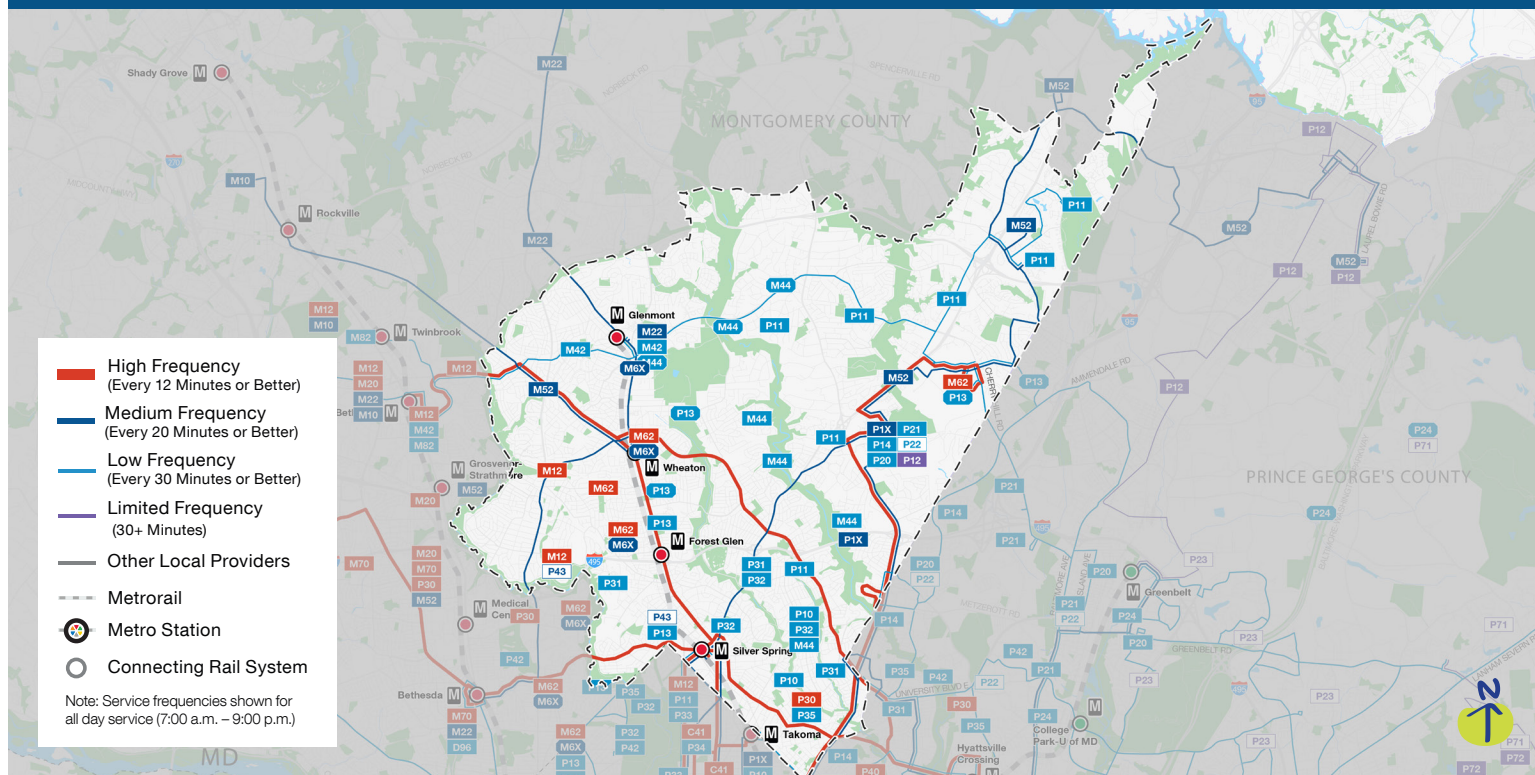
This map compares how far you can travel from UMD-College Park on transit using the existing network (red) and the proposed network (purple).

A farther reach means that you can get to more jobs and other key destinations.



# PROPOSED 2025 BETTER BUS NETWORK

## Neighborhood Profile: Glenmont, Wheaton & White Oak



# What this means for Glenmont, Wheaton & White Oak

## Improved Frequency

You told us that increasing frequency and decreasing wait time is your top priority.

So we're offering more frequent service on three routes, including:

- **M44** improves Sunday frequency between Colesville and College Park; improves Sunday frequency between Cherry Hill Park Campground and College Park

**13,950 (11%) more people can access 20-minute or better service on weekdays**

## Better Connections

New connections will get you to more places faster and easier, including:

- Significantly more service operating to White Oak Medical Center and White Oak Transit Center
- **M22** offers new cross-county service between Bethesda, Wheaton, Aspen Hill, and Olney, with service to Silver Spring available on route M20
- **M44** offers new connections between Glenmont, Colesville, Cherry Hill Park, the Route 1 corridor, and College Park
- **M52** offers new connections between Silver Spring, White Oak Medical Center, Burtonsville, and Laurel, facilitating north-south connections across Montgomery County, with limited stop connections from Burtonsville and Briggs Chaney to Silver Spring available on Ride On Flash

**On average, a customer can access 25,800 (9.6%) more jobs on weekdays**

## Longer Operating Hours

Customers told us – and the data shows – that people want and need service during the middle of the day, in the evenings, and on weekends.

Two routes provide improved midday, evening or weekend service:

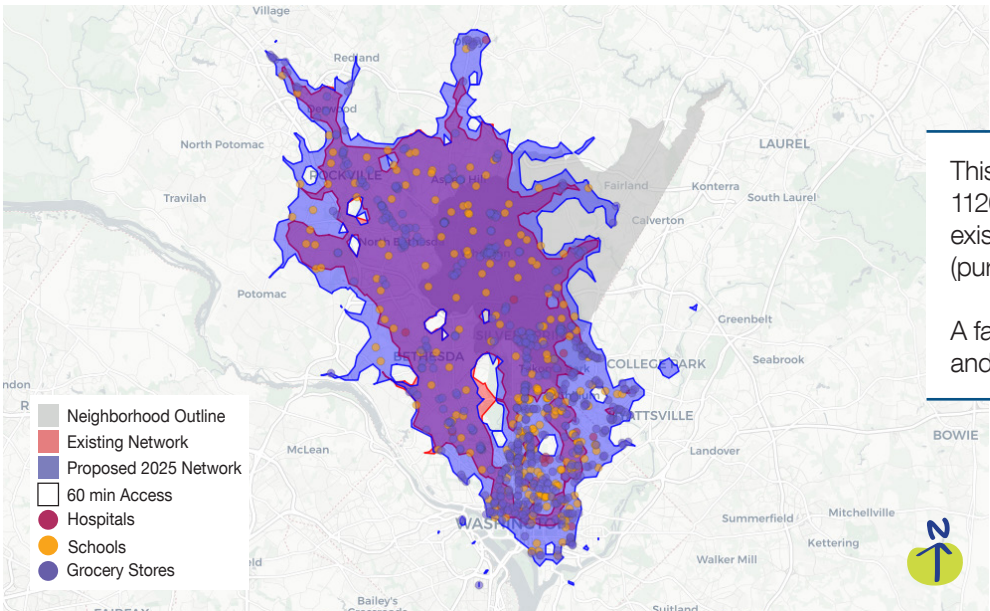
- **P13** provides later service on weekdays and weekends between White Oak Transit Center and Fort Totten (P13)
- **D4X** provides limited stop service until 10:00 p.m. every day between Archives and Silver Spring, which means better frequencies for a longer period of time

**16,000 (9%) more people can access 30-minute or better service on weekends**

## Maximized Resources

Service is more direct, reduces duplication and is easier to understand:

- **M70** streamlines the existing J1 and J2 into one high frequency route connecting Montgomery Mall, Bethesda, and Silver Spring. Medical Center Station is no longer served due to low ridership at that location and a long diversion from higher demand areas.

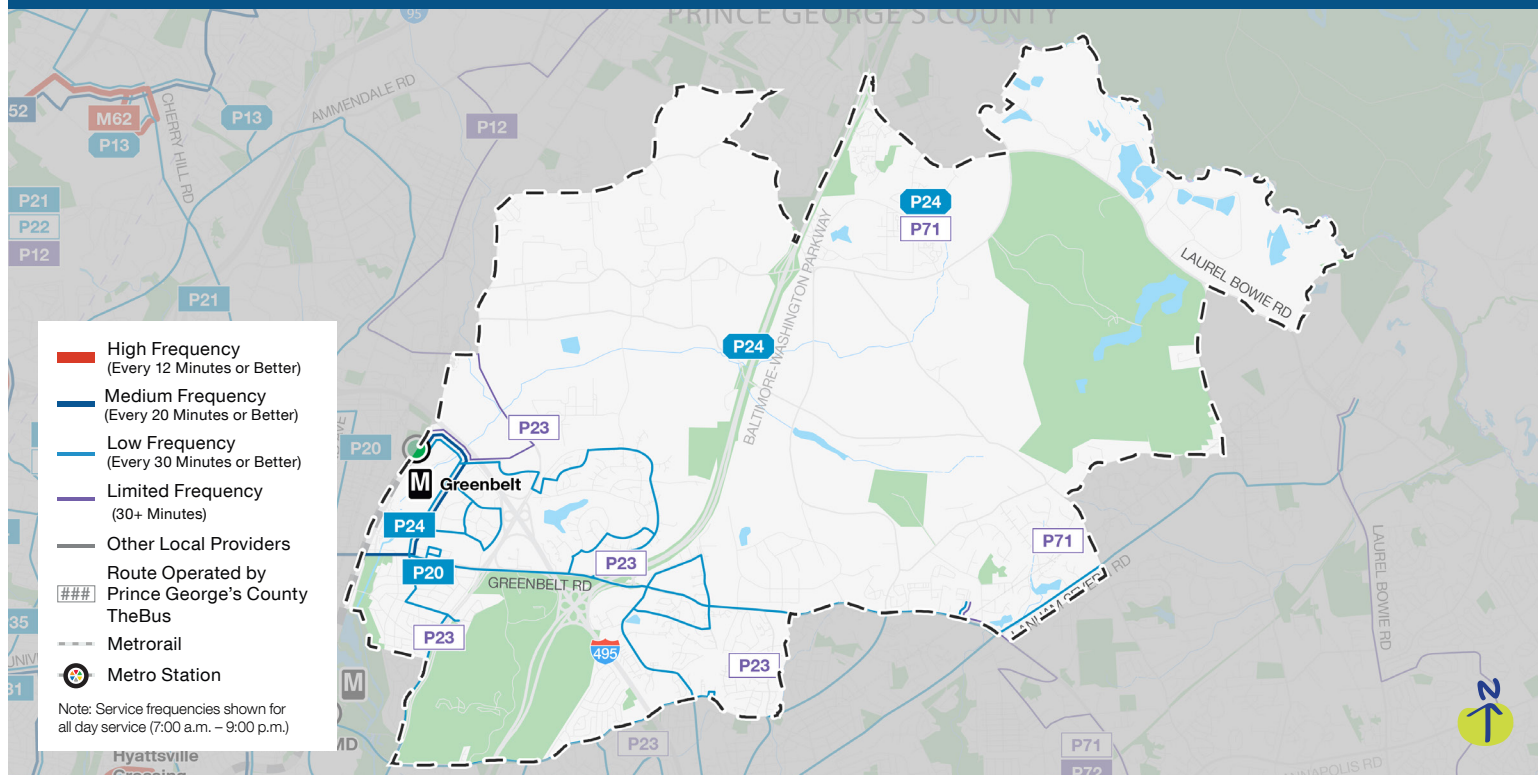


This map compares how far you can travel from 11201 Georgia Ave Safeway on transit using the existing network (red) and the proposed network (purple).

A farther reach means that you can get to more jobs and other key destinations.

# PROPOSED 2025 BETTER BUS NETWORK

## Neighborhood Profile: Greenbelt



### Improvements in Greenbelt



#### Improved Frequency

More frequent service on four routes serving Greenbelt, Laurel and New Carrollton



#### Better Connections

New north-south connections between Greenbelt and Berwyn Heights



#### Longer Operating Hours

Longer operating hours on three routes, including new weekend service from Laurel and Greenbelt and midnight service Monday through Saturday



#### Maximized Resources

Routes coordinated with TheBus to create more direct service and better north-south connections

Proposed service in Prince George's County will be operated by Metrobus and TheBus





# What this means for Greenbelt

Proposed service in Prince George's County will be operated by Metrobus and TheBus

## Improved Frequency

You told us that increasing frequency and decreasing wait time is your top priority.

So we're offering more frequent service on four routes, including:

- **P12** improves rush hour frequency between Greenbelt and Laurel
- **P20** improves weekday off-rush and weekend frequency between Greenbelt and Glendale, and between Greenbelt and New Carrollton via Greenbelt Road
- **P21** improves weekday midday frequency between Greenbelt and New Carrollton via Hanover Parkway

**3,900 more people can access 20-minute or better service on weekdays**

## Better Connections

New connections will get you to more places faster and easier, including:

- **P14** offers new north-south connections between to Berwyn Heights
- **P1X** offers new connections between Greenbelt and Rhode Island Avenue
- **P22** offers new connections between Greenbelt and Cheverly

**On average, a customer can access 11,100 (19%) more jobs on weekdays**

## Longer Operating Hours

Customers told us – and the data shows – that people want and need service during the middle of the day, in the evenings, and on weekends.

Three routes provide improved midday, evening or weekend service:

- **P12** provides new weekend service and weekday and Saturday service until midnight between Laurel and Greenbelt
- **P14** provides new Sunday service between Greenbelt and Deanwood
- **P1X** provides weekday and Saturday service until midnight between Greenbelt and Rhode Island Avenue Station

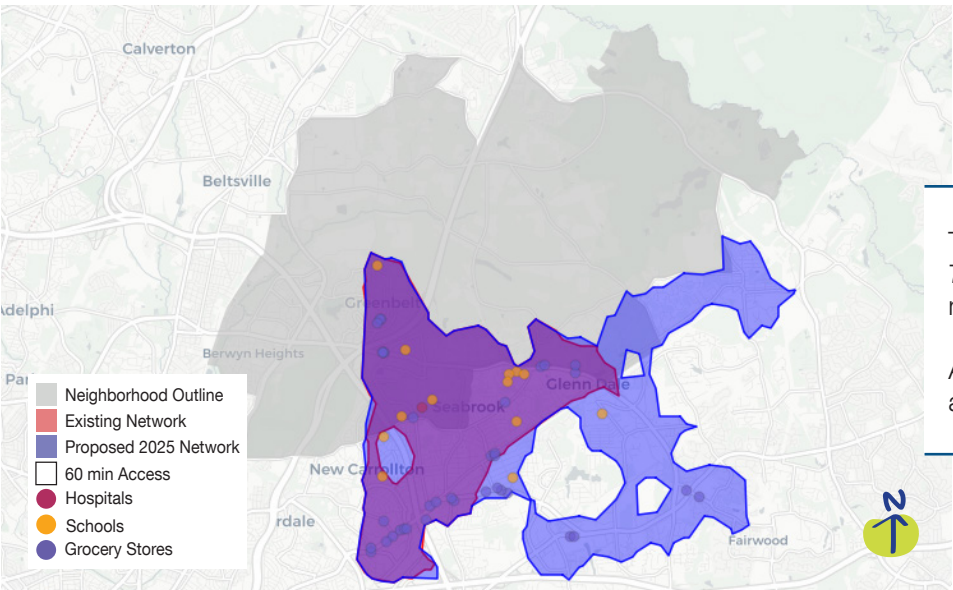
**11,650 (409%) more people can access 30-minute or better service on weekends**

## Maximized Resources

Service is more direct, reduces duplication and is easier to understand:

- New routing for P20 and P24 eliminates doubling back on Greenbelt Road between Good Luck Road and Mission Drive

**11% (1.4k) more trips have a convenient transit option**

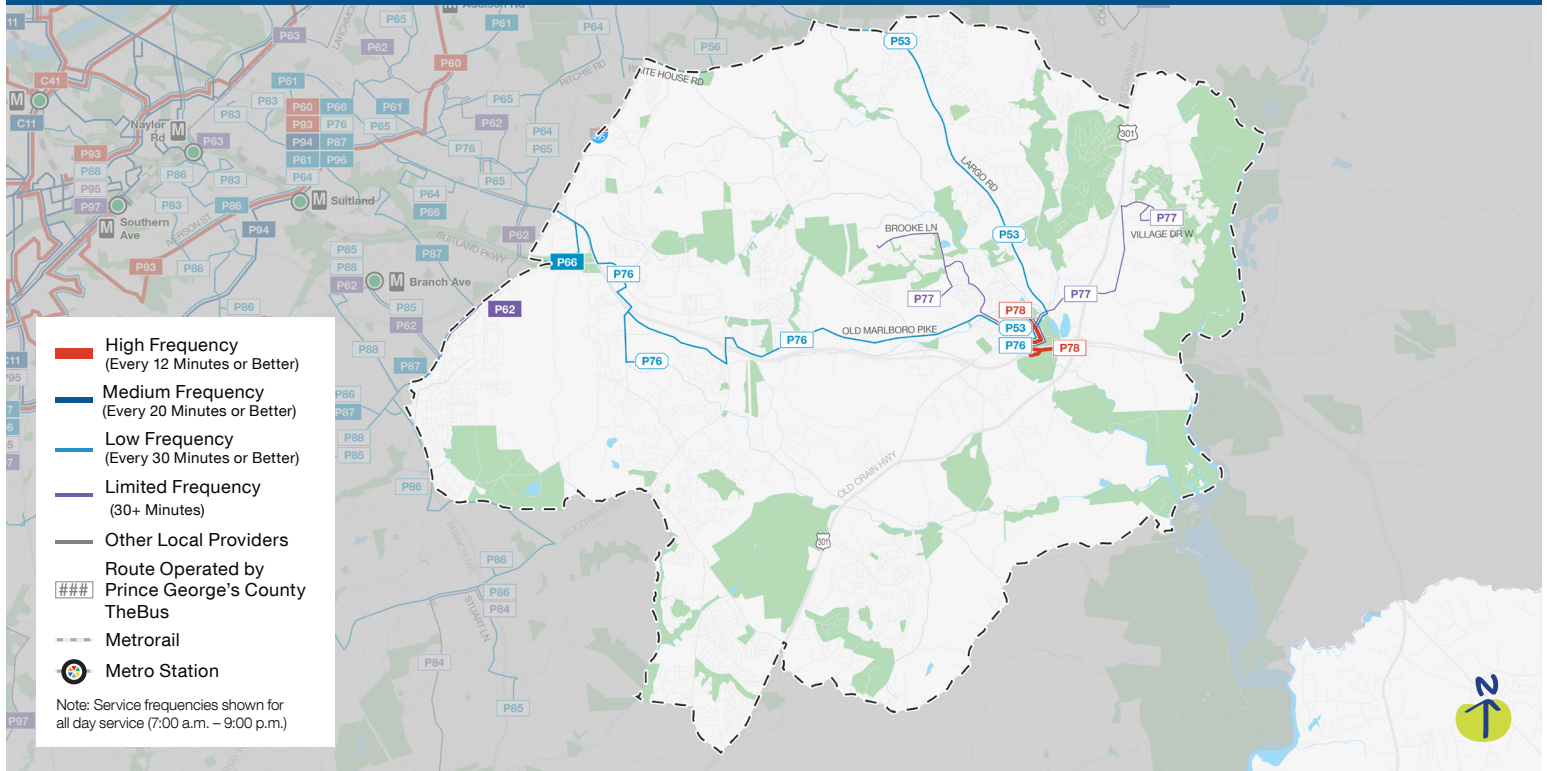


This map compares how far you can travel from 7500 Mission Drive Lidl on transit using the existing network (red) and the proposed network (purple).

A farther reach means that you can get to more jobs and other key destinations.

# PROPOSED 2025 BETTER BUS NETWORK

## Neighborhood Profile: Joint Base Andrews & Upper Marlboro



### Improvements in Joint Base Andrews & Upper Marlboro



#### Improved Frequency

More frequent service all days between Forestville and Suitland



#### Better Connections

New service connecting between Upper Marlboro, Penn Mar Shopping Center, and Suitland



#### Longer Operating Hours

New all-day service to Presidential Parkway



#### Maximized Resources

Service coordinated with TheBus to create higher frequency service between Parkland and Forestville

Proposed service in Prince George's County will be operated by Metrobus and TheBus



# What this means for Joint Base Andrews & Upper Marlboro

Proposed service in Prince George's County will be operated by Metrobus and TheBus

## Improved Frequency

You told us that increasing frequency and decreasing wait time is your top priority.

So we're offering more frequent service on one route:

- **P66** improves midday frequency all week between Forestville and Suitland

With these route specific improvements, 91% people retain access to 20-minute or better service on weekdays.

## Better Connections

New connections will get you to more places faster and easier, including:

- **P76** offers new connections between Upper Marlboro, Penn Mar Shopping Center, and Suitland
- **P77** offers new connections between Marlboro Meadows, Upper Marlboro, and Marlboro Village and Henry Wise Jr. High School

## Longer Operating Hours

Customers told us – and the data shows – that people want and need service during the middle of the day, in the evenings, and on weekends.

Two routes provide improved midday, evening or weekend service:

- **P76** offers new connections between Upper Marlboro, Penn Mar Shopping Center, and Suitland
- **P77** offers new connections between Marlboro Meadows, Upper Marlboro, and Marlboro Village and Henry Wise Jr. High School

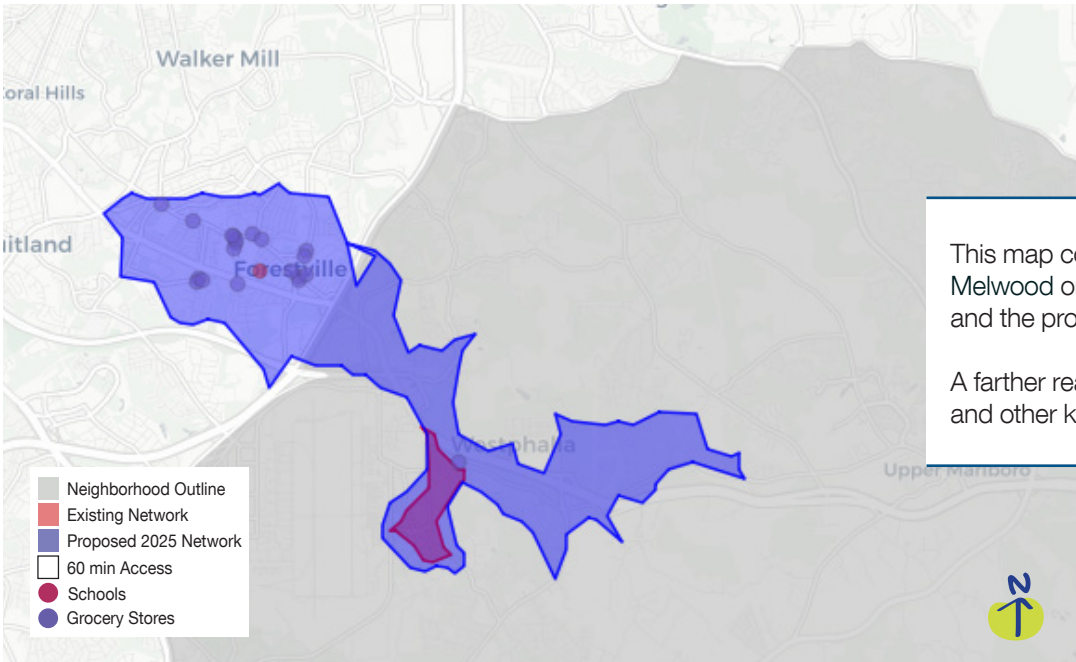
400 (10%) more people can access 30-minute or better service on weekends

## Maximized Resources

Service is more direct, reduces duplication and is easier to understand:

- Coordinates services between Metrobus and TheBus to create higher frequency service through Parkland and Forestville

With coordinated services increasing frequency, 96% of trips retain a convenient transit option



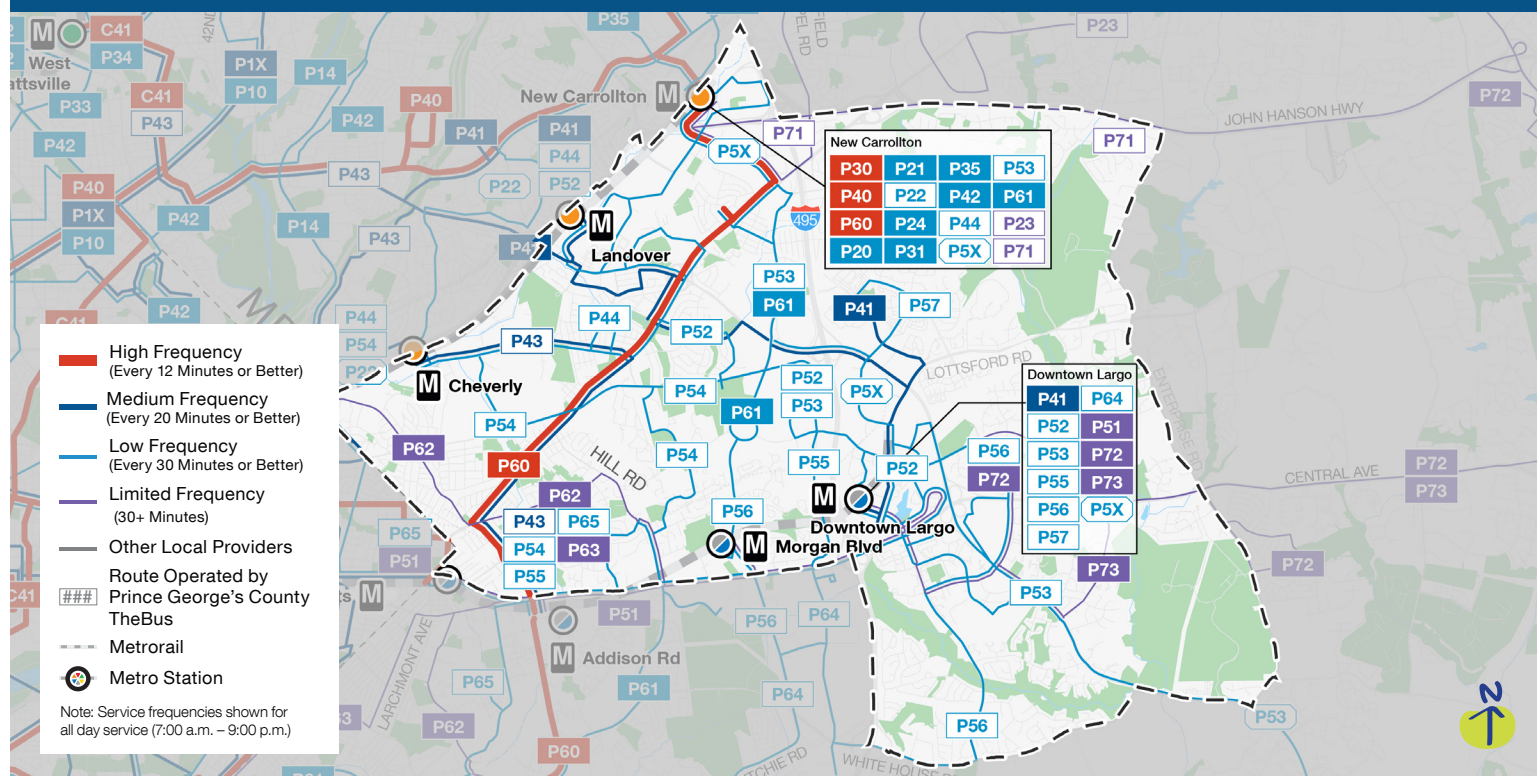
This map compares how far you can travel from Melwood on transit using the existing network (red) and the proposed network (purple).

A farther reach means that you can get to more jobs and other key destinations.



# PROPOSED 2025 BETTER BUS NETWORK

## Neighborhood Profile: Largo & Glenarden



## Improvements in Largo & Glenarden



### Improved Frequency

More frequent service on five routes serving Prince George's Community College, Woodmore Towne Centre and more



### Better Connections

New connections between New Carrollton and Genn Dale and Suitland



### Longer Operating Hours

Longer operating hours on four routes, including earlier weekend service between Capital Plaza and downtown Largo



### Maximized Resources

Routes redesigned to simplify service on Annapolis Road and Central Ave

Proposed service in Prince George's County will be operated by Metrobus and TheBus



# What this means for Largo & Glenarden

Proposed service in Prince George's County will be operated by Metrobus and TheBus

## Improved Frequency

You told us that increasing frequency and decreasing wait time is your top priority.

So we're offering more frequent service on five routes, including:

- **P44** improves midday frequency between Cheverly and New Carrollton
- **P57** improves frequency on weekdays between Prince George's Community College and Woodmore Towne Centre
- **P61** improves midday and weekend frequency between New Carrollton and Suitland via Seat Pleasant

1,250 (5%) more people can access 20-minute or better service on weekdays

## Better Connections

New connections will get you to more places faster and easier, including:

- **P23** offers new connections between New Carrollton and Glenn Dale serving Glenn Dale Boulevard, Glenn Dale Road, and to the Fairwood Green Shopping Center
- **P60** offers new connections between New Carrollton and Suitland
- **P62** offers new connections between southern Prince George's County and the Penn Mar Shopping Center and the Orange, Blue, Silver, and Green Lines

On average, a customer can access 10,600 (8.4%) more jobs on weekdays

## Longer Operating Hours

Customers told us – and the data shows – that people want and need service during the middle of the day, in the evenings, and on weekends.

Four routes provide improved midday, evening or weekend service, including:

- **P61** provides later service all days of the week and new Sunday service between New Carrollton and Central Avenue via Commanders Field

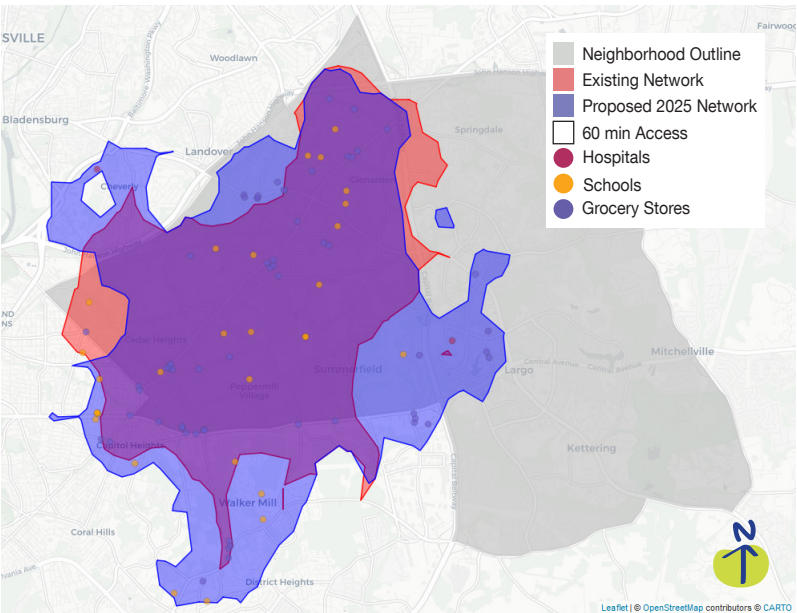
15,450 (38%) more people can access 30-minute or better service on weekends

## Maximized Resources

Service is more direct, reduces duplication and is easier to understand:

- **P23** combines parts of the existing F13 and B24 to provide better access to jobs and grocery stores
- **P73** simplifies existing Central Avenue service

10% (4k) more trips have a convenient transit option

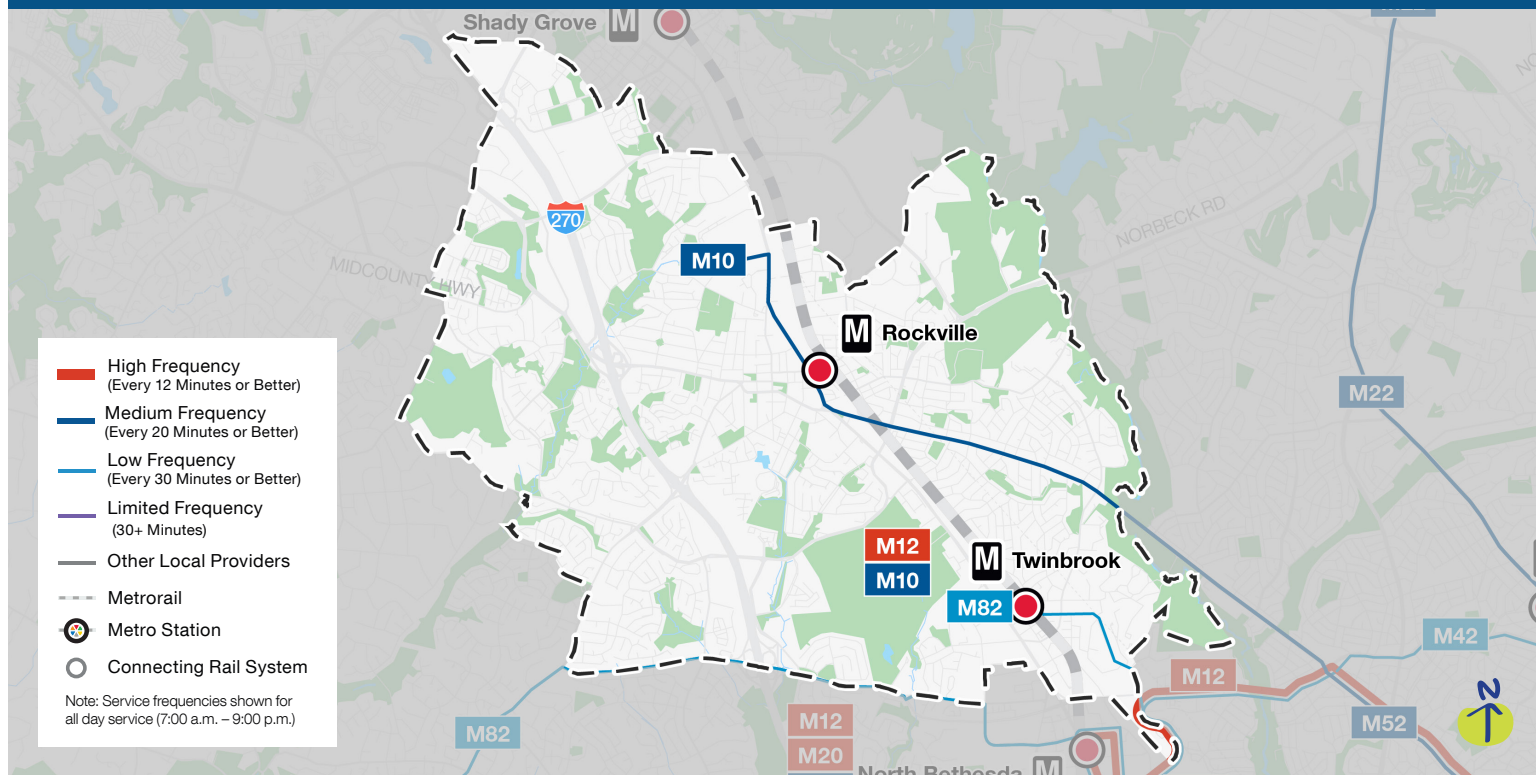


This map compares how far you can travel from G James Gholson Middle on transit using the existing network (red) and the proposed network (purple).

A farther reach means that you can get to more jobs and other key destinations.

# PROPOSED 2025 BETTER BUS NETWORK

## Neighborhood Profile: Rockville & Twinbrook



### Improvements in Rockville & Twinbrook



#### Improved Frequency

More trips between Montgomery College and Rockville



#### Better Connections

New service connecting Potomac with North Bethesda and Twinbrook



#### Maximized Resources

Simplified service along Veirs Mill Road





# What this means for Rockville & Twinbrook

## Improved Frequency

You told us that increasing frequency and decreasing wait time is your top priority.

So we're offering more frequent service on one route:

- **M10** provides higher frequency between Montgomery College and Rockville

## Better Connections

New connections will get you to more places faster and easier, including:

- **M82** offers new connections from Potomac to North Bethesda and Twinbrook to provide additional access to jobs

On average, a customer can access 15,700 (6.4%) more jobs within 60 minutes on weekdays

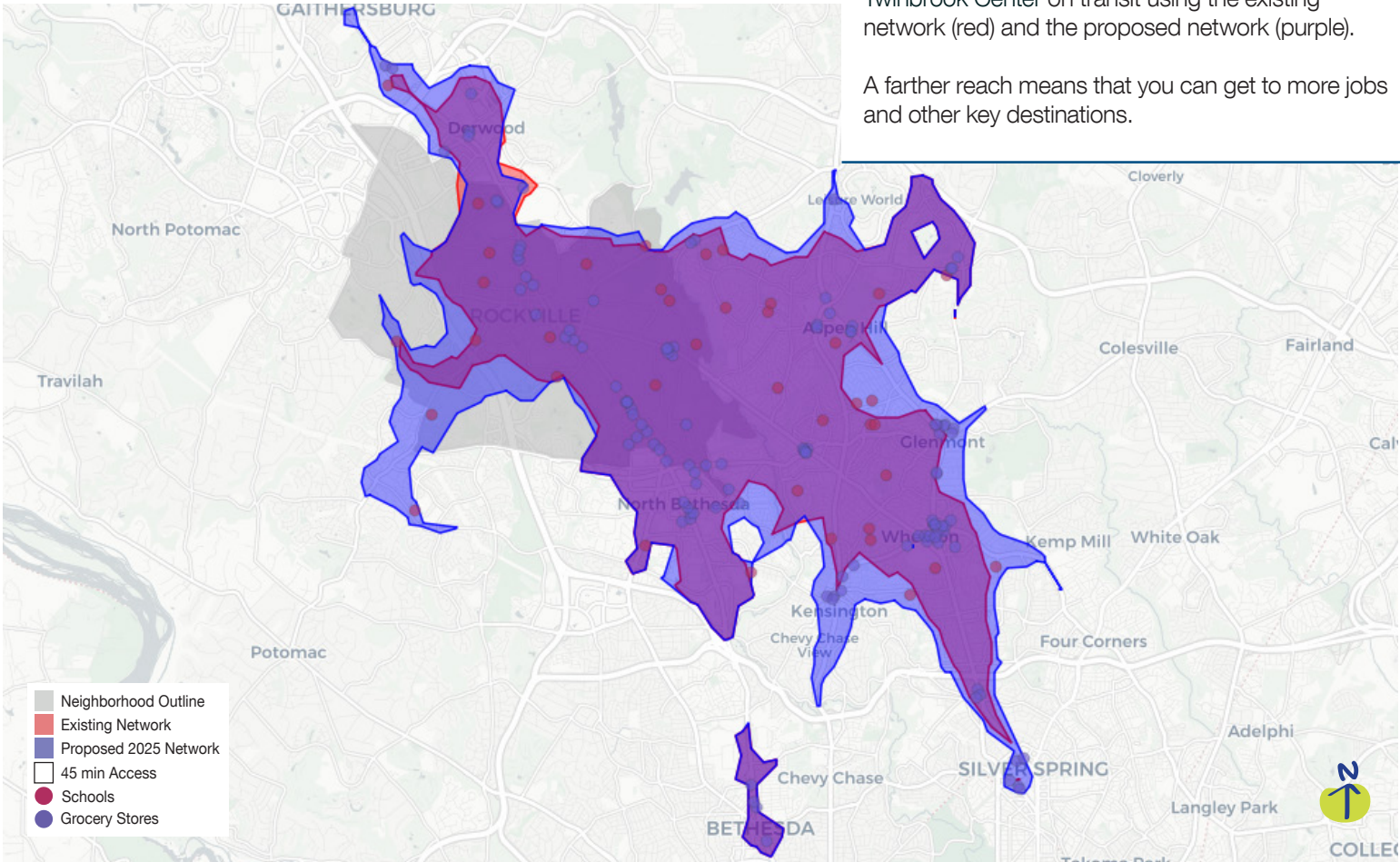
## Maximized Resources

Service is more direct, reduces duplication and is easier to understand:

- **Coordinated service between Ride On and Metrobus** simplifies service by having one agency operate the route seven days a week
- **Simplified existing Veirs Mill Road service** by maintaining one pattern between Montgomery College and Wheaton at all times. Access between Montgomery College and Shady Grove is provided by existing Ride On routes and access between Wheaton and Silver Spring is provided by route M20

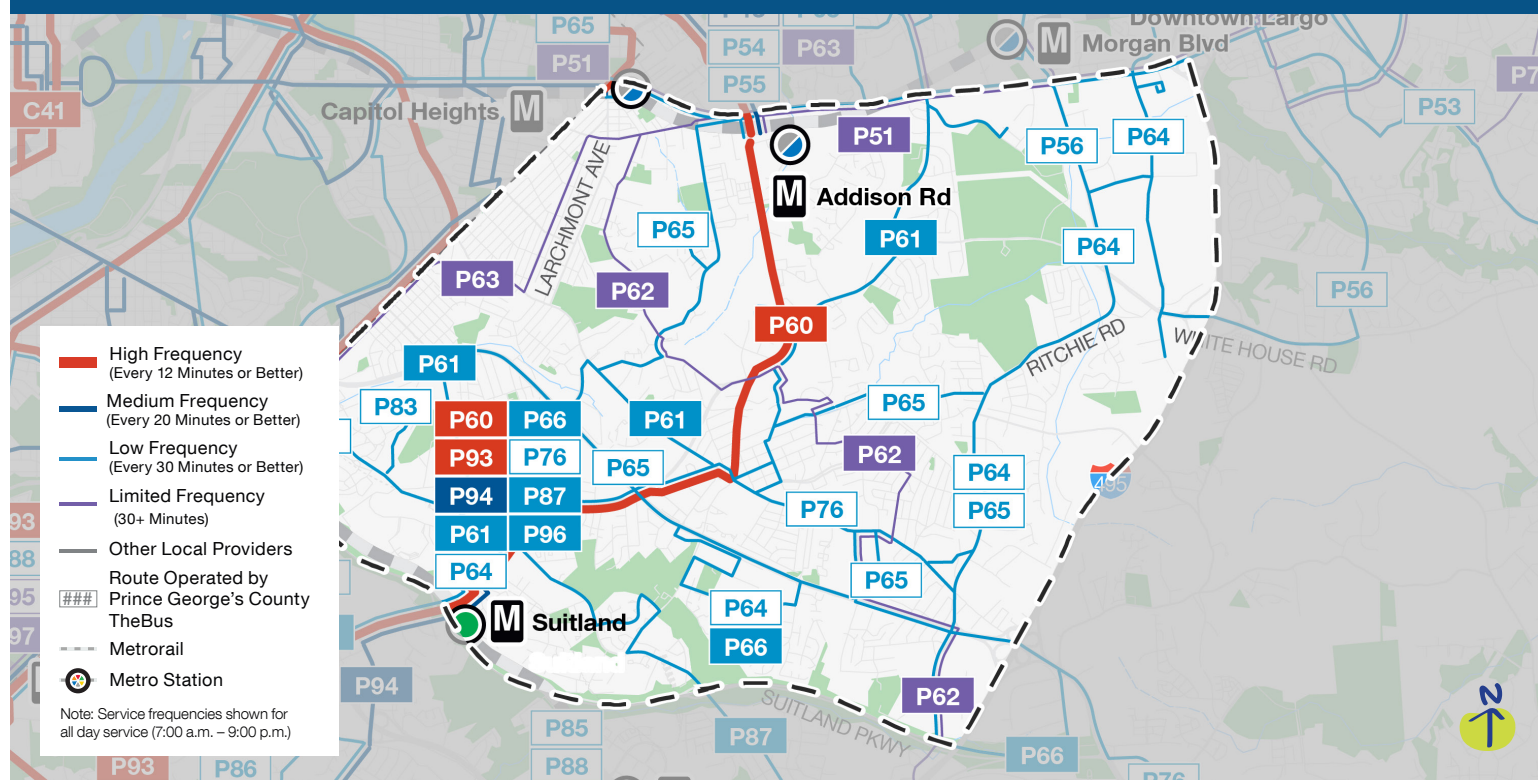
This map compares how far you can travel from Twinbrook Center on transit using the existing network (red) and the proposed network (purple).

A farther reach means that you can get to more jobs and other key destinations.



# PROPOSED 2025 BETTER BUS NETWORK

## Neighborhood Profile: Suitland & Capitol Heights



## Improvements in Suitland & Capitol Heights



### Improved Frequency

More frequent service on three routes serving Suitland, New Carrollton and Forestville



### Better Connections

New north-south connections between Suitland and New Carrollton



### Longer Operating Hours

New Sunday service between Naylor Road and Addison Road Stations



### Maximized Resources

Routes streamlined to offer more connections throughout Suitland

Proposed service in Prince George's County will be operated by Metrobus and TheBus



# What this means for Suitland & Capitol Heights

Proposed service in Prince George's County will be operated by Metrobus and TheBus

## Improved Frequency

You told us that increasing frequency and decreasing wait time is your top priority.

So we're offering more frequent service on four routes:

- **P56** improves frequency between Addison Road Station and New Carrollton Station
- **P61** improves midday and weekend frequency between Suitland and New Carrollton
- **P66** and **P64** service improves frequency every day of the week between Suitland and Forestville

**700 (4%) more people can access 20-minute or better service on weekdays**

## Better Connections

New connections will get you to more places faster and easier, including:

- **P60** offers new north-south connections between Suitland and New Carrollton via Martin Luther King Jr Highway
- **P62** offers new connections between southern Prince George's County, Penn Mar Shopping Center, and the Orange, Blue, Silver, and Green lines
- **P83** offers new connection between the housing complexes on Suitland Road and the Shops at Iverson

**On average, a customer can access 21,900 (15%) more jobs on weekdays**

## Longer Operating Hours

Customers told us – and the data shows – that people want and need service during the middle of the day, in the evenings, and on weekends.

Four routes provide improved midday, evening or weekend service, including:

- **P61** provides later service on weekends between Central Avenue and Suitland
- **P63** provides new Sunday service between Naylor Road and Addison Road stations
- **P83** provides new bi-directional rush hour service in Hillcrest Heights and new Saturday service between Naylor Road and Capital Crossing

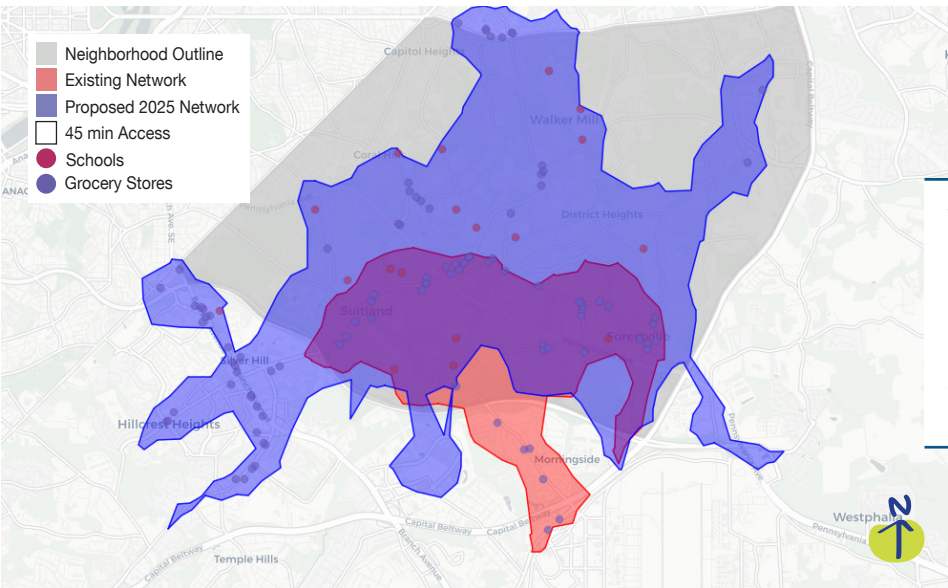
**23,650 (152%) more people can access 30-minute or better service on weekends**

## Maximized Resources

Service is more direct, reduces duplication and is easier to understand:

- **P83** combines the existing Metrobus Route C12 and TheBus Route 34 to offer better connections throughout the Suitland area

**5% (1.8k) more trips have a convenient transit option**



This map compares how far you can travel from Samuel P. Massie Academy on transit using the existing network (red) and the proposed network (purple).

A farther reach means that you can get to more jobs and other key destinations.