



Metrorail's New Heavy Repair and Overhaul Facility

📍 Landover, Maryland

PROJECT FACT SHEET | Fall 2021

Overview

The new Metrorail Heavy Repair and Overhaul (HRO) Facility in Landover, Maryland will be Metro's first facility exclusively focused on the major repair and overhaul of passenger railcars. Located just off the Orange Line at 3636 Pennsy Drive, the building will be outfitted with bays for 20 rail cars, a rail car truck shop and storage tracks. The \$400-million project is anticipated to begin construction in 2023.

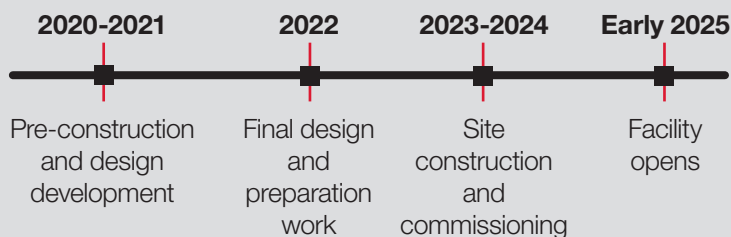
Improving Metrorail Operations for Safe and More Reliable Service

The new HRO Facility will centralize Metro's capacity for heavy maintenance of rail cars, supporting the safe and reliable operation of its rail vehicles. Additionally, the 37-acre-facility will include administrative offices for staff responsible for rail car maintenance operations, track condition monitoring and public safety operations.

Metro's Capital Improvement Program

The HRO building is funded through Metro's six-year, \$12.3 billion Capital Improvement Program, which invests in system safety, reliability and the region's economy. Metro's capital investments are organized into six major categories, this project is in the Railcar and Railcar Facilities category.

Timeline



A Greener Way to do Business

Metro is committed to constructing environmentally responsible facilities that allow for more efficient operations with minimal impact to communities, providing the safest workplace for its employees. The new HRO Facility will integrate green features with the goal of obtaining LEED certification, focusing on:

- Conserving energy
- Stormwater management
- Optimized indoor environmental quality

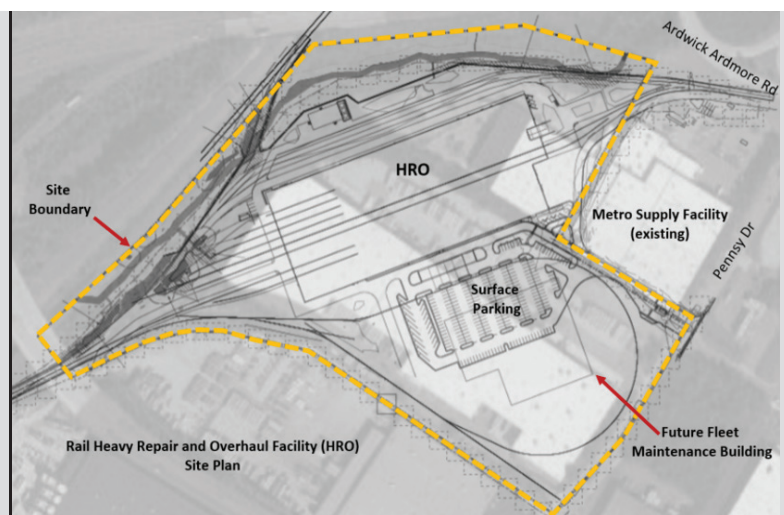
Additionally, the facility is being designed to provide a modern workplace experience for employees by including an abundance of indirect natural light, modern high-efficiency mechanical systems and LED lighting.

Construction Impacts

When site construction begins in 2023, it is expected to have minimal impacts to the surrounding businesses. Projected impacts include:


- Minor construction related traffic
- Light construction noise

All individuals are encouraged to steer clear of the construction zone and follow the posted construction and safety signs. Learn more at wmata.com/HeavyRepairOverhaulFacility.



Learn more

 wmata.com/HeavyRepairOverhaulFacility

 202-637-1328

