

Metro Ridership Snapshot

May 2025



Washington Metropolitan Area Transit Authority

Table of Contents

- Overall Ridership
- Ridership Trends Over the Past Year
- Metrorail Ridership
- Metrobus Ridership
- MetroAccess Network Ridership
- Metro Parking Transactions
- Pre-Pandemic Ridership Comparison

Note: Percentage changes in this document represent year-over-year changes in ridership, compared to the same time, location, and day type **one year ago** unless noted as 'pre-pandemic' which then represents a comparison to the same month from March 2019 - February 2020. For more details, see [How to Use and Interpret Metro Ridership Data](#).

Metrobus ridership shown here is from Metro's automatic passenger counters (APCs), in both current and baseline months. Metrorail ridership shown here is total (tap and no-tap) ridership recorded through faregates. MetroAccess Network ridership refers to the combined ridership from Metro-operated paratransit service as well as from the Abilities-Ride program which launched in September 2020. Parking transactions are from the farebox system.



Overall Ridership in May

Total Ridership

- Compared to May 2024, ridership increased by 8% overall, 10% on weekdays, 12% on Saturdays, and 7% on Sundays.

Rail

- Compared to May 2024, ridership increased by 18% overall, 21% on weekdays, 17% on Saturdays, and 9% on Sundays.

Bus

- Ridership has decreased 1% overall, 1% on weekdays, and increased 6% on weekends compared to May 2024.

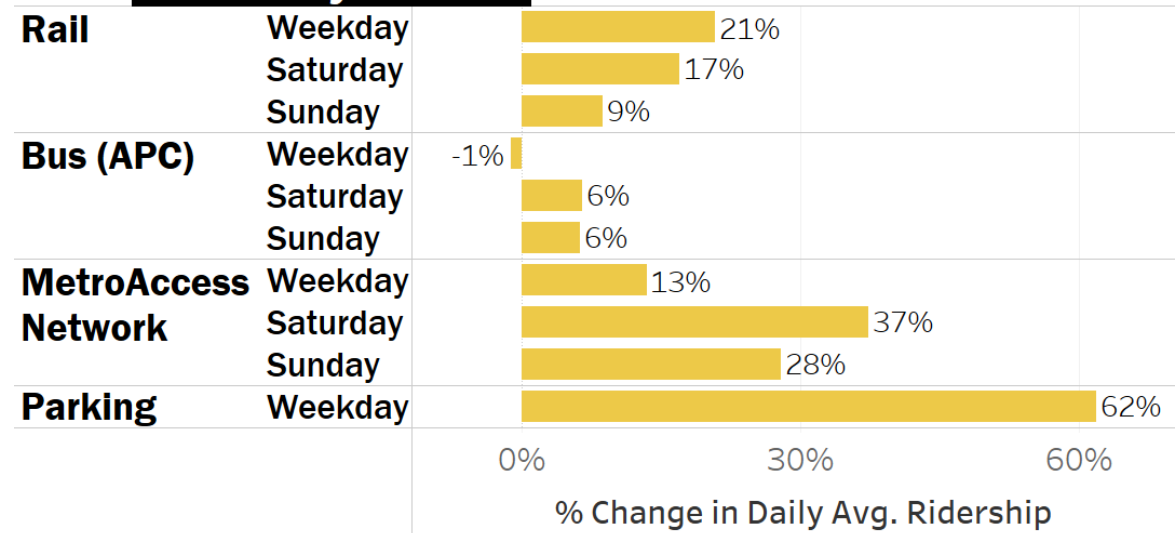
MetroAccess

- Compared to May 2024, ridership increased by 14% overall, 13% on weekdays, 37% on Saturdays, and 28% on Sundays.

Parking

- Paid parking transactions have increased by 62% compared to May 2024.

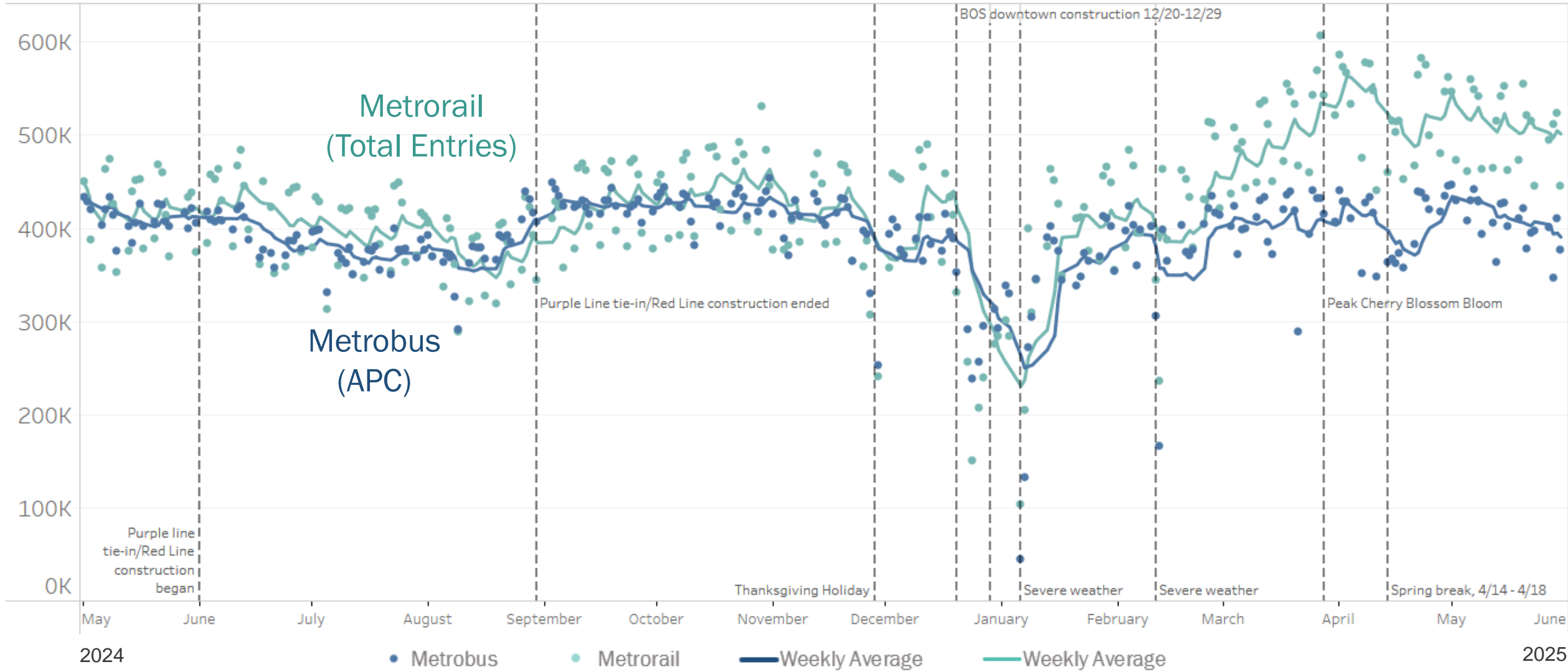
vs. May 2024



May 2025 Averages	Weekday	Saturday	Sunday	Total Ridership
Rail	505,300	304,300	222,000	13,243,000
Bus (APC)	406,500	258,300	210,400	10,880,000
MetroAccess Network	9,700	4,900	4,200	249,000
Parking	32,900			695,000

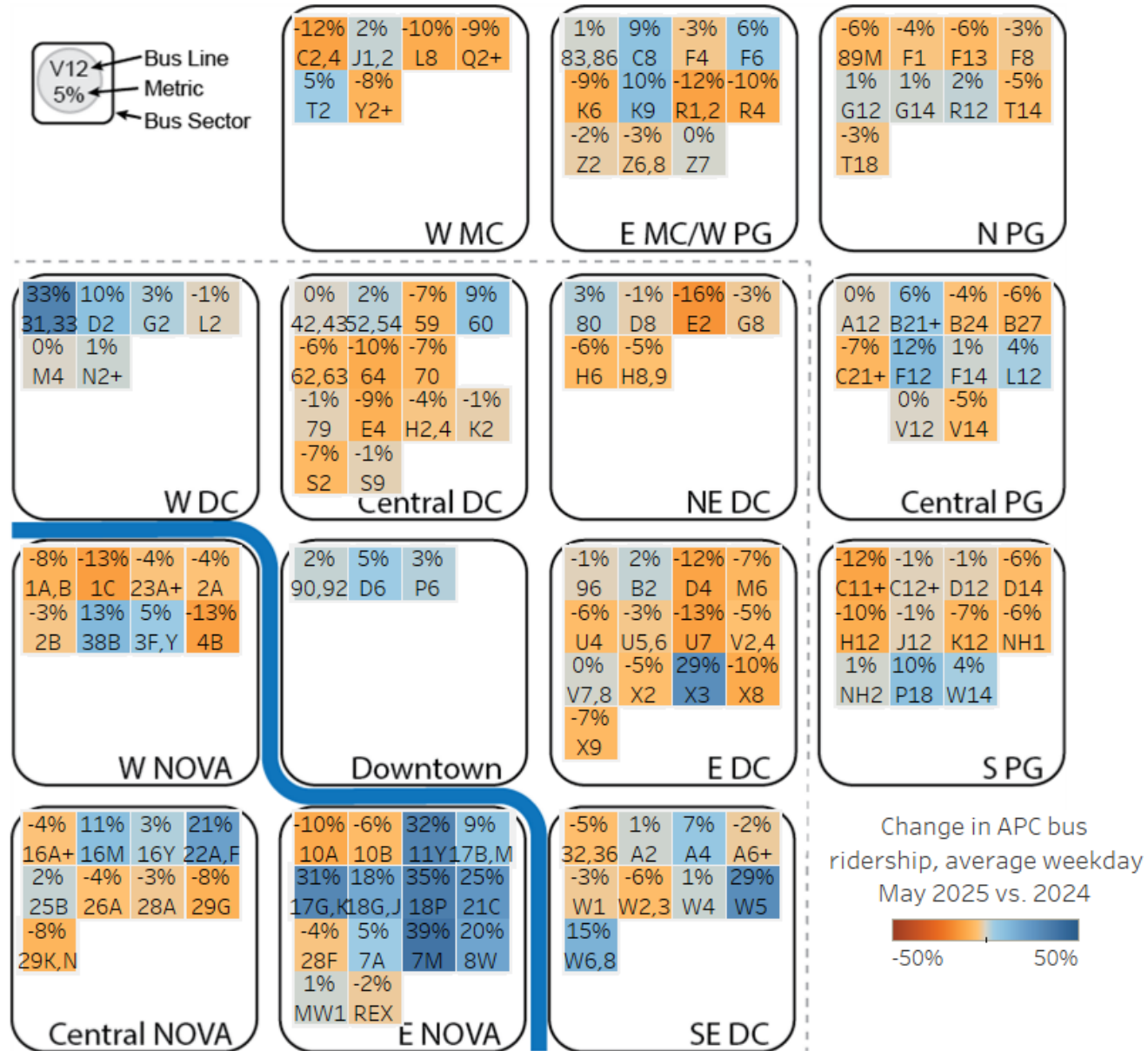


Ridership Trends Over the Past Year



Metrobus Ridership

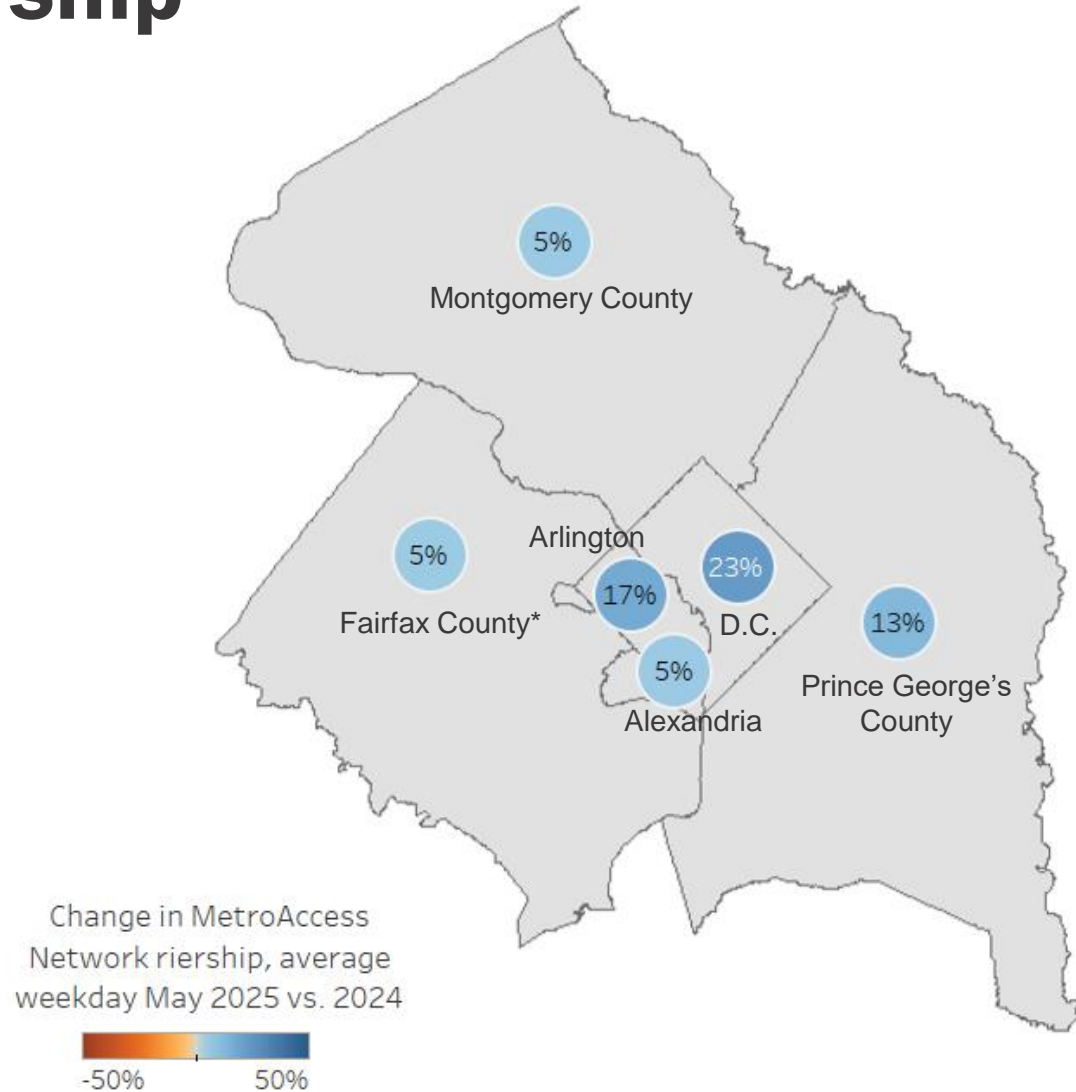
- In May 2025, average daily Metrobus ridership was 407,000 rides on weekdays, 258,000 on Saturdays, and 210,000 on Sundays.
- Metrobus ridership has decreased 1% overall, 1% on weekdays, and increased 6% on weekends compared to May 2024.
- About 3% of customer time was crowded on average with more crowding on weekdays.
- There were approximately 40,000 total shuttle rides made in May 2025, serving customers on:
 - Orange Line service between Stadium Armory and New Carrollton stations from 5/10 – 5/11.
 - Blue, Orange, and Silver Line service between Eastern Market and Cheverly/Addison Rd stations from 5/24 – 5/26.



For more nuanced bus route information, additional data can be found on the [WMATA Ridership Data Portal](#). Bus ridership based on Automatic Passenger Counter data.

MetroAccess Network Ridership

- In May 2025, the MetroAccess network provided on average 9,700 rides on weekdays, 4,900 on Saturdays, and 4,200 on Sundays.
- MetroAccess network ridership is up 15% overall, 14% on weekdays, 22% on Saturdays, and 28% on Sundays compared to May 2024.
- **Notes:**
 - The MetroAccess network comprises rides made via our paratransit service, MetroAccess, as well as rides requested through the Abilities-Ride program which is a curb-to-curb transportation option for MetroAccess-enrolled customers who opt in and is operated by local taxi companies and transportation network companies.
 - Metro Access-eligible customers' rail and bus rides are counted in overall rail and bus ridership.



*Fairfax City and Falls Church are counted here as a part of Fairfax County



Pre-Pandemic Ridership Comparison

Total ridership

- Ridership was at 90% of pre-pandemic levels (May 2019) overall, 86% on weekdays, 20% above on Saturdays, and 31% above on Sundays.

Rail

- Ridership was at 83% of pre-pandemic ridership overall, 79% on weekdays, 21% above on Saturdays, and 24% above on Sundays.

Bus

- Ridership was at pre-pandemic ridership overall, at 97% of pre-pandemic ridership on weekdays, 18% above on Saturdays, and 40% above on Sundays.

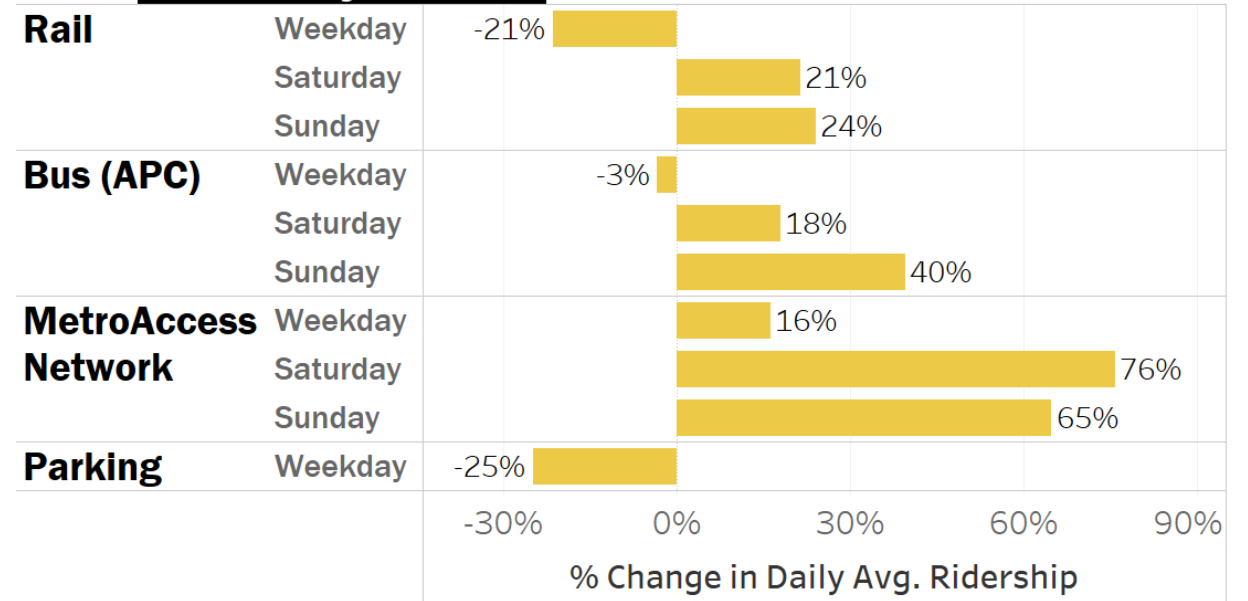
MetroAccess

- Ridership was 20% above pre-pandemic ridership overall, 16% on weekdays, 76% on Saturdays, and 65% on Sundays.

Parking

- Paid parking transactions were at about 75% of pre-pandemic levels.

vs. May 2019



	May 2019 Averages	Weekday	Saturday	Sunday	Total Ridership
Rail		642,700	250,600	178,900	16,037,000
Bus (APC)		420,500	218,800	150,800	10,881,000
MetroAccess Network		8,300	2,800	2,500	207,000
Parking		43,700			965,000

