

Metro Ridership Snapshot

March 2025



Washington Metropolitan Area Transit Authority

Table of Contents

- Overall Ridership
- Ridership Trends Over the Past Year
- Rail Ridership
- Bus Ridership
- MetroAccess Network Ridership
- Parking Utilization
- Pre-Pandemic Comparison

Note: Percentage changes in this document represent year-over-year changes in ridership, compared to the same time, location, and day type **one year ago** unless noted as 'pre-pandemic' which then represents a comparison to five years ago. For more details, see [How to Use and Interpret Metro Ridership Data](#).

Bus ridership shown here is from Metro's automatic passenger counters (APCs), in both current and baseline months. Beginning October 2023, Metro shifted the method for processing APC data that is shown in this report. All historical data was reprocessed, and reports going back to July 2023 have been restated with the updated data. For Metrorail ridership prior to January 2023, Metro reported only tap ridership, which understated the total number of riders. The completion of the installation of new faregates in January 2023 enabled Metro to report total (tap and non-tap) ridership. As of January 2024, year-over-year and pre-pandemic comparisons on rail are made with total ridership. Prior to January 2024, these comparisons were made using tap-only ridership. Beginning in January 2025, MetroAccess Network ridership refers to the combined ridership from Metro-operated paratransit service as well as from the Abilities-Ride program which launched in September 2020. The report was updated to reflect the growing role of the Abilities-Ride program in providing service to our MetroAccess-eligible customers. Prior to January 2025 this report showed Metro-operated MetroAccess ridership only. Parking utilization is from the farebox system.



Overall Ridership in March

Total Ridership

- Compared to March 2024, ridership increased by 15% overall, 15% on weekdays, 26% on Saturdays, and 7% on Sundays.

Rail

- Compared to March 2024, ridership increased by 22% overall, 19% on weekdays, 33% on Saturdays, and 6% on Sundays.

Bus

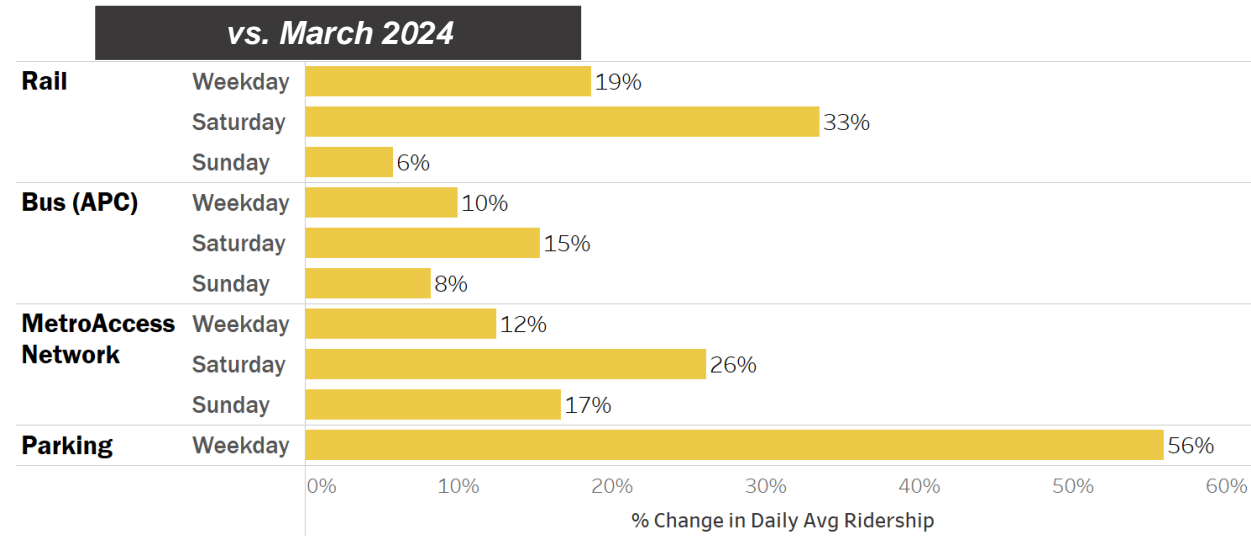
- Ridership has increased 10% overall, 10% on weekdays, 15% on Saturdays, and increased 8% on Sundays compared to March 2024.

MetroAccess

- Compared to March 2024, ridership increased by 14% overall, 12% on weekdays, 26% on Saturdays, and 17% on Sundays.

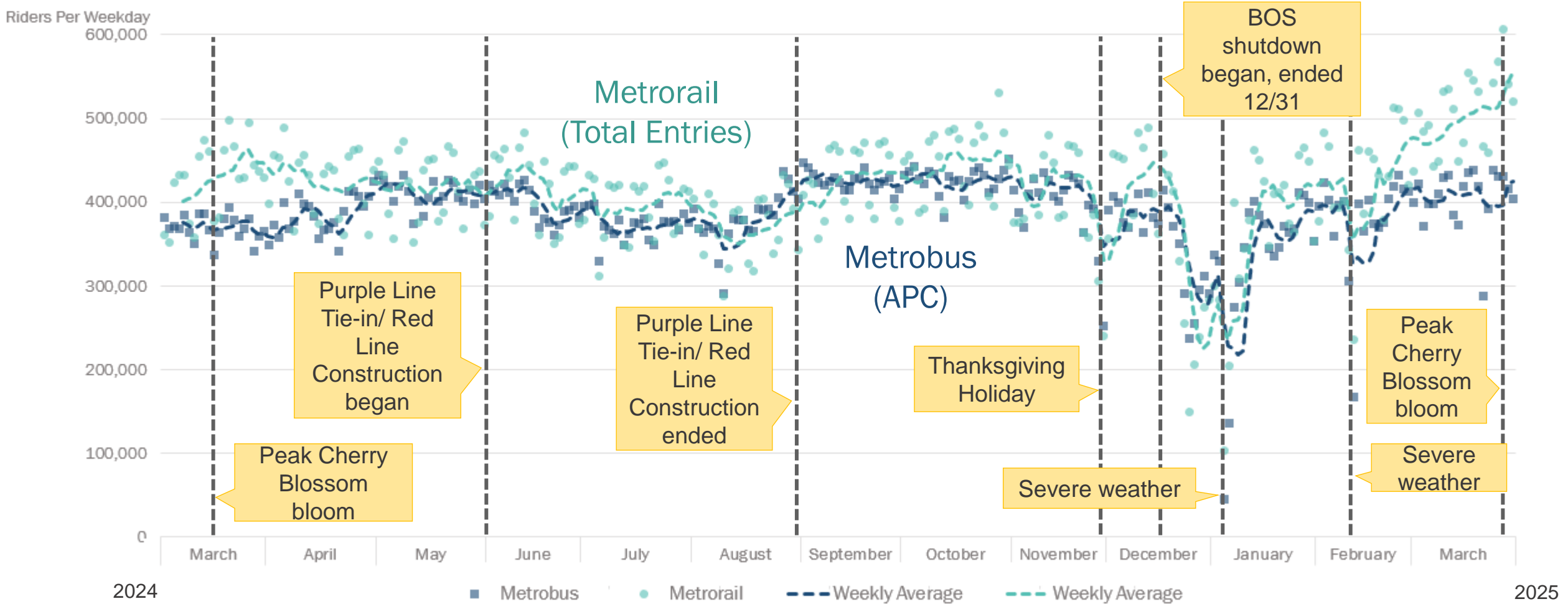
Parking

- Usage has increased by 56% compared to March 2024.



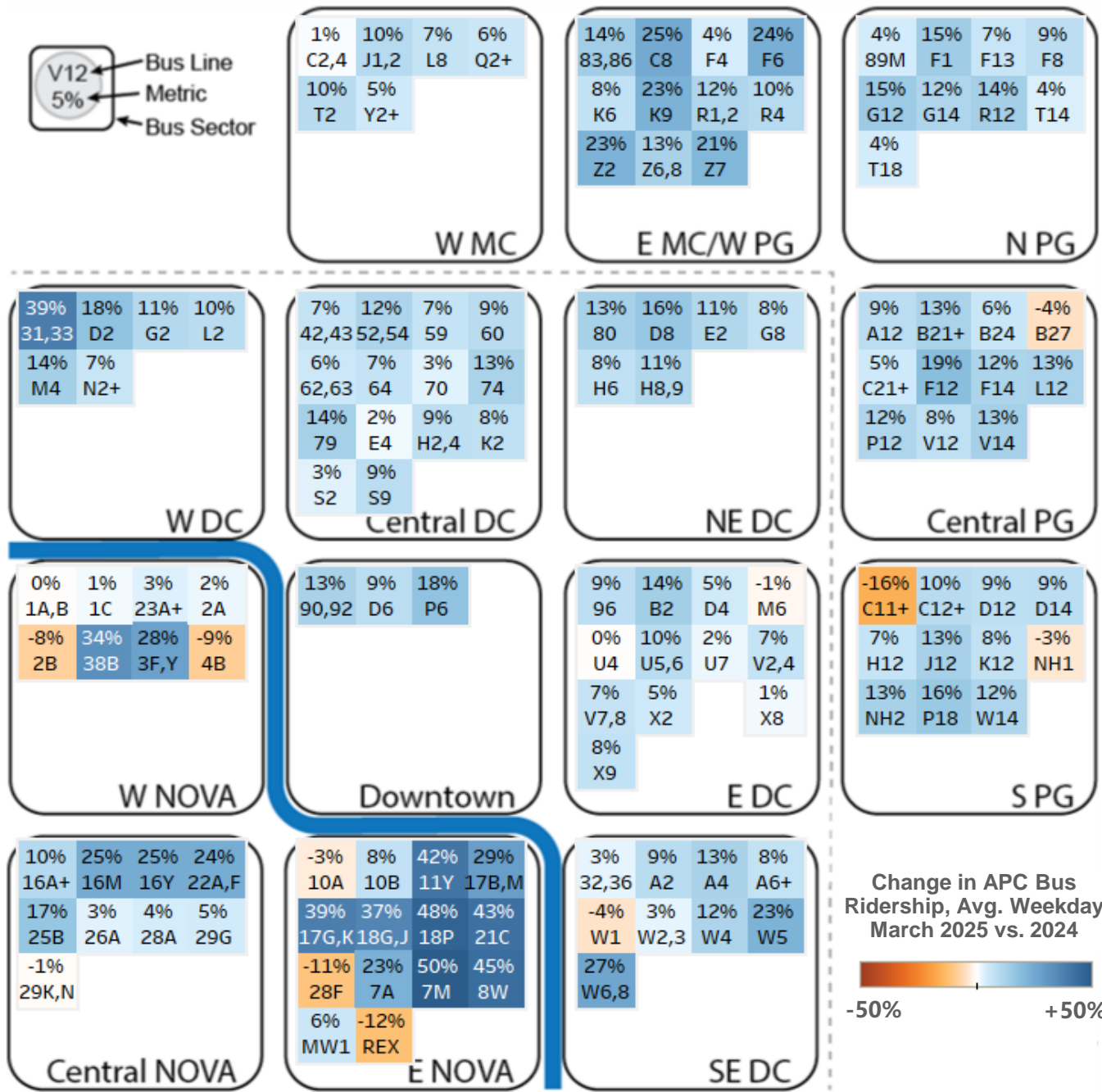
March 2025 Averages	Weekday	Saturday	Sunday	Total Ridership
Rail	508,000	392,000	247,000	13,855,000
Bus (APC)	407,000	260,000	205,000	10,872,000
MetroAccess Network	9,300	4,500	3,800	238,000
Parking	32,000			680,000

Ridership Trends Over the Past Year



Metrobus Ridership

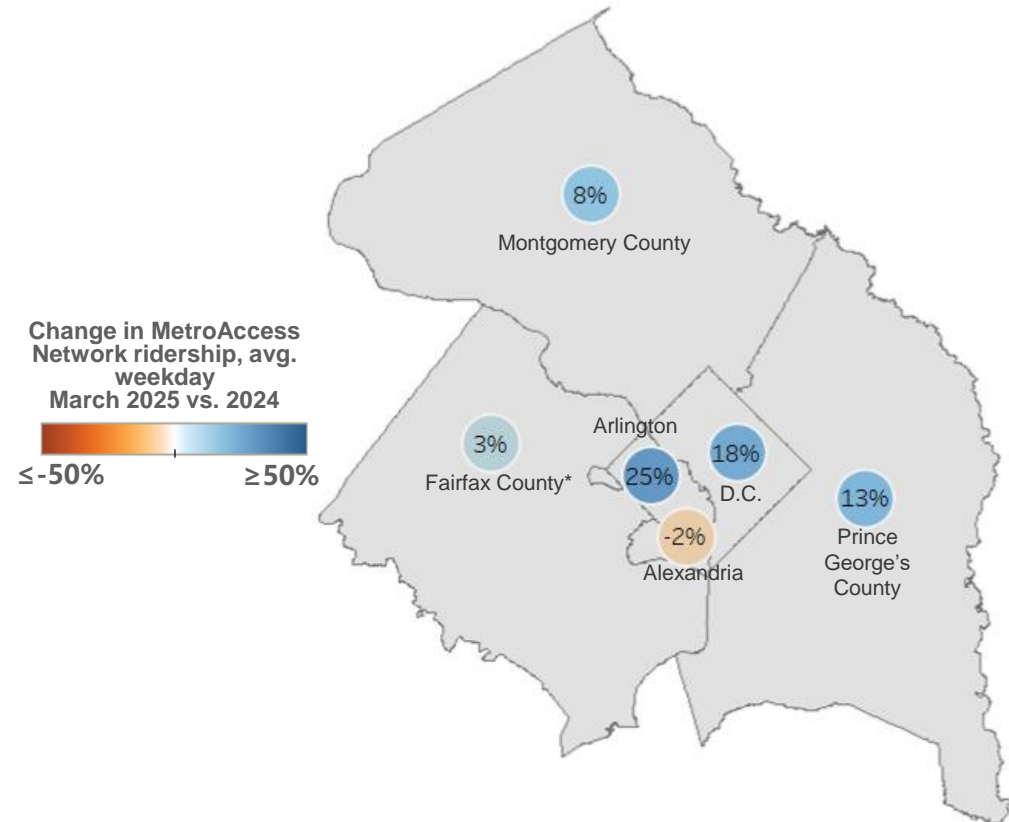
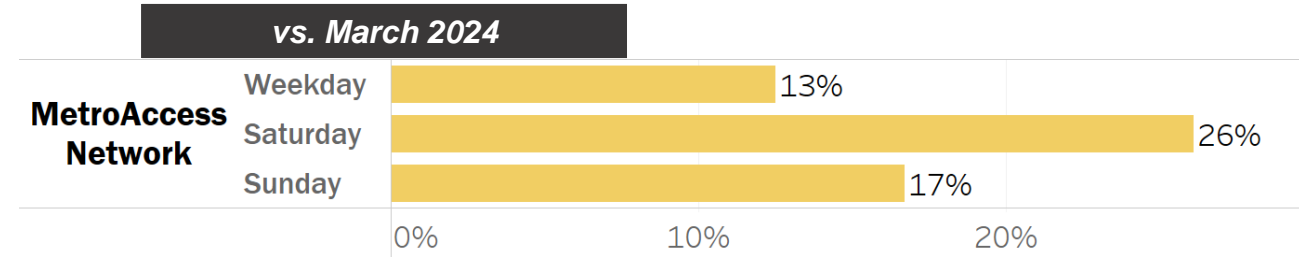
- Metrobus ridership has increased 10% overall, 10% on weekdays, 15% on Saturdays, and increased 8% on Sundays compared to March 2024.
- About 4% of customer time was crowded on average with more crowding on weekdays.
- There were approximately 18,000 total shuttle rides made in March 2025, serving customers on:
 - Blue, Orange, Silver Line service between Eastern Market – Cheverly/Addison Road from 3/8 – 3/9.



For more nuanced bus line information, additional data can be found on the [WMATA Ridership Data Portal](#). Bus ridership based on Automatic Passenger Counter data.

MetroAccess Network Ridership

- In March 2025, the MetroAccess network provided on average 9,300 rides on weekdays, 4,500 on Saturdays, and 3,800 on Sundays.
- MetroAccess network ridership is up 14% overall, 12% on weekdays, 26% on Saturdays, and 17% on Sundays compared to March 2024.
- Notes:
 - The MetroAccess network comprises rides made via our paratransit service, MetroAccess, as well as rides requested through the Abilities-Ride program which is a curb-to-curb transportation option for MetroAccess-enrolled customers who opt in and is operated by local taxi companies and transportation network companies.
 - Metro Access-eligible customers' rail and bus rides are counted in overall rail and bus ridership.



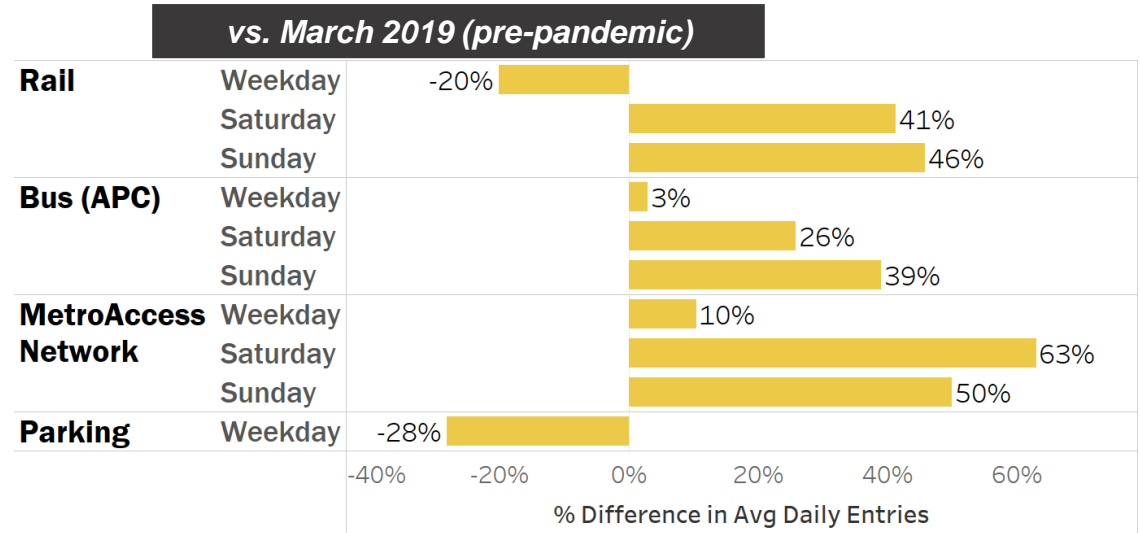
*Fairfax City and Falls Church are counted here as a part of Fairfax County



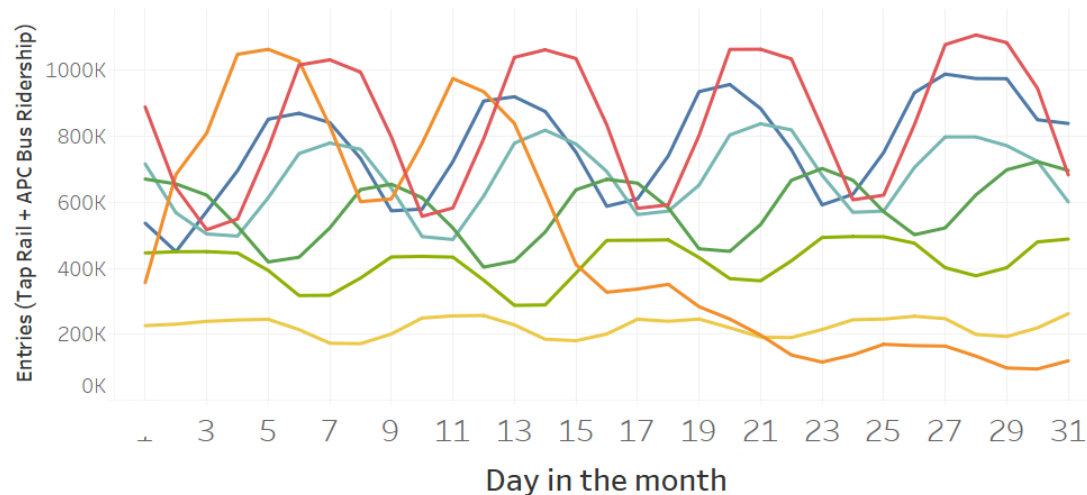
Pre-Pandemic Ridership Comparison

Current vs. pre-pandemic levels (March 2025 vs. March 2019):

- **Total** ridership was at 96% of pre-pandemic ridership overall, 89% of pre-pandemic levels on weekdays, 35% above pre-pandemic levels on Saturdays, and 43% above pre-pandemic levels on Sundays.
- **Rail** ridership was at 89% of pre-pandemic ridership overall, 80% of pre-pandemic levels on weekdays, 41% above pre-pandemic levels on Saturdays, and 46% above pre-pandemic levels on Sundays.
- **Bus** ridership was 8% above pre-pandemic ridership overall, 3% above pre-pandemic levels on weekdays, 26% above pre-pandemic levels on Saturdays, and 39% above pre-pandemic levels on Sundays.
- **Parking** usage was at about 72% of pre-pandemic levels.



March Ridership over the Past Seven Years



March 2019 Averages	Weekday	Saturday	Sunday	Total Ridership
Rail	636,000	278,000	169,000	15,595,000
Bus (APC)	396,000	207,000	148,000	10,081,000
MetroAccess Network	8,400	2,800	2,600	204,000
Parking	45,000			941,000

2-Day Rolling Average

2019 2020 2021 2022 2023 2024 2025

