

# Metro's Meet the Primes Engineering Edition

TYLin, PGH Wong, EXP, Urban Engineers,  
JMT and Burns Engineering



Washington Metropolitan Area Transit Authority  
June 18, 2026

# Welcome & Announcements

**Nathan Tash**

SVP, Chief Procurement and Innovative Officer  
Office of Procurement & Materials

# Welcome & Announcements



**Meshelle M.V. Howard, MCA**  
Director, Small Business Programs Office  
Department of Finance

# Agenda

1. Metro's Capital Projects Presentation
2. TYLin Presentation
3. PGH Wong Presentation
4. EXP Presentation
5. Urban Engineers Presentation
6. Closing remarks
7. Networking with Agencies & Exhibitors



Scan the QR code for Information on How to Get Certified with Metro and to view Available Procurements

# Introducing:

**Norie Calvert**  
Director  
Capital Projects

# Upcoming Capital Construction Projects



**Norie  
Calvert**

Metro's Small Business Opportunities Fair

June 18, 2026

# Upcoming Projects

1. Standpipe Replacement  
– 7 Locations



2. Fleet Maintenance  
Facility



3. FLS Fire Protection Upgrades



4. Backup  
Operations Control  
Center



5. PARC Upgrade & LPR



6. Drainage Pumping  
Stations (DPS) - Phase 3



# 1 Standpipe Replacement - 7 Locations

- Seven locations identified for standpipe repair and replacement
- Locations:
  - Garages: Shady Grove, Wheaton, Glenmont, Hyattsville, Franconia Springfield.
  - Stations: Smithsonian Station, and Eastern Market Station
- Scope includes replacement of dry standpipe from grade level to water service rooms including communications, fire alarm and partial structural repairs. The standpipe will be rerouted to allow for the replacement of buried sections of standpipe feeders.



**Delivery Method:** Design-Bid-Build (DBB)

**Anticipated Advertisement:** Summer 2026

**Estimated Contract Value:** \$10M - \$15M

## 2 Fleet Maintenance Facility

- Expanding the existing Service and Inspection Building at the Dulles Rail Yard to create additional repair bays and workspaces necessary to support Scheduled Maintenance Services (SMS) on-site.
- Conversion of the existing 40,000-square-foot warehouse at Dulles into industrial shop space to house the specialized equipment and functions required for SMS operations and two turnouts to Yard Track #5 to connect the new track to the remainder of the yard.

---

**Delivery Method:** Design-Build (DB)

---

**Anticipated Advertisement:** Summer 2026

---

**Estimated Contract Value:** \$140M - \$160M

---



### 3 FLS Fire Protection Upgrades

- Upgrade existing fire alarm and automatic fire sprinkler system within the metro station and its ancillary facilities at Forest Glen Metro Station.
- Upgrade Architectural and Mechanical infrastructure

---

**Delivery Method:** Design-Build (DB)

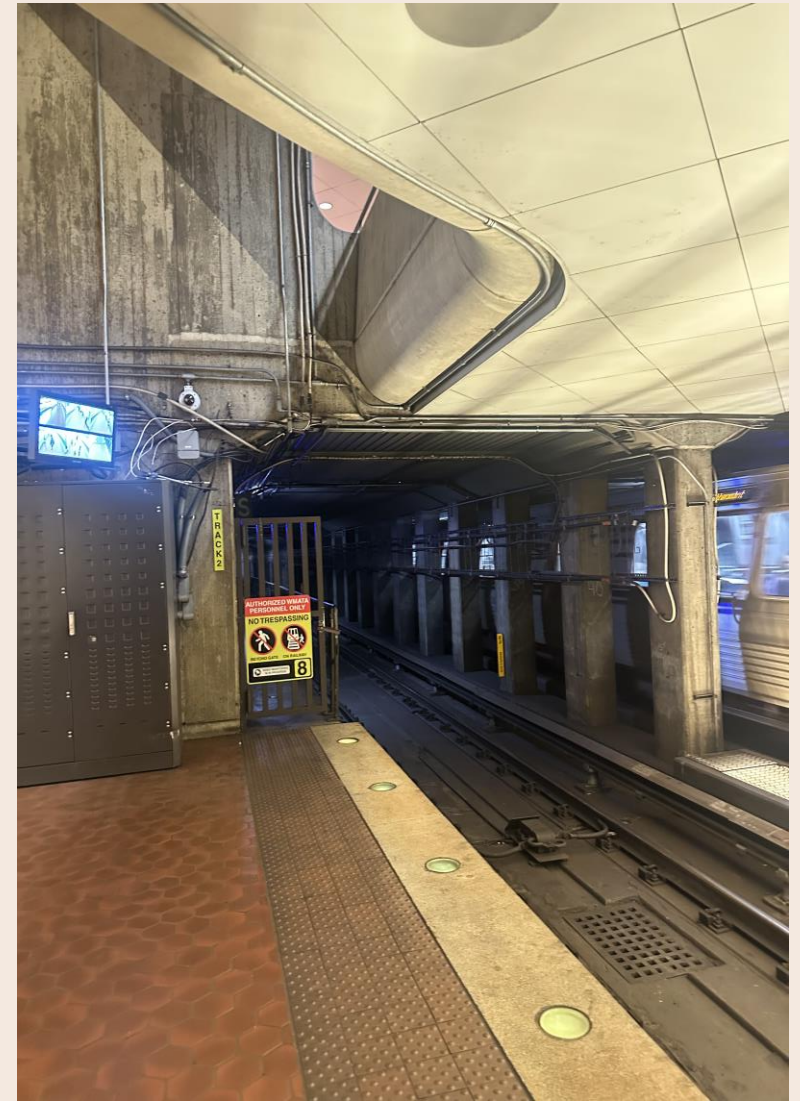
---

**Anticipated Advertisement:** Summer 2026

---

**Estimated Contract Value:** \$10M - \$15M

---



# 4 Backup Operations Control Center

- Backup Operations Control Center (Backup OCC) includes the design and construction of a unified backup facility in lieu of disparate backup spaces that exist currently.
- This project unifies backup spaces at CTF for Rail, Bus, Video Surveillance, and MTPD Dispatch and will include communication, power, digital modernization, security and other critical requirements.

**Delivery Method:** Design-Build (DB)

**Anticipated Advertisement:** Fall 2026

**Estimated Contract Value:** \$15M - \$20M



## 5 PARC Upgrade & LPR

- Upgrades WMATA's parking payment system to improve state of good repair and customer payment experience.
- Replaces existing PARCS equipment with a cloud-based system, integrated digital display pay stations, and Open Pay capability.
- Covers 35 WMATA locations and five WMATA operated locations.
- Expands License Plate Recognition coverage to 20 total locations, including New Carrollton.

**Delivery Method:** Design-Build (DB)

**Anticipated Advertisement:** Fall 2026

**Estimated Contract Value:** \$25M - \$30M



## 6 Drainage Pumping Stations (DPS) – Phase 3

- Comprehensive design and construction services necessary to rehabilitate and enhance six Drainage Pumping Stations (DPS), bringing them to a state of good repair while implementing targeted system upgrades that support flood resiliency and improved operational reliability.
- Locations: Medical Center, Strathmore, North Bethesda (2 – DPS systems), Congress Heights and Southern Ave.



**Delivery Method:** Design-Bid-Build

**Anticipated Advertisement:** Spring 2027

**Estimated Contract Value:** \$20-30M

# Upcoming Capital Construction Projects

**Questions  
&  
Comments**

# Introducing:



[www.tylin.com](http://www.tylin.com)

Washington Metropolitan Area Transit Authority



TYLin

PARTNERING TO DELIVER THE NEXT GENERATION OF TRANSIT  
INFRASTRUCTURE

# TYLin at Metro's Meet the Primes, Engineering Edition

John Daza, PE  
Rail + Transit Sector Manager and PM+CM  
Practice Manager, Mid-Atlantic



# TYLin

Founded in 1954, TYLin has a legacy of delivering world-class infrastructure through technical excellence and innovation. That's because we understand your local concerns. We are dedicated to elevating our communities through our creativity, multidisciplinary capabilities, and commitment to diversity, equity, and inclusion.

**3,200+**  
Employees

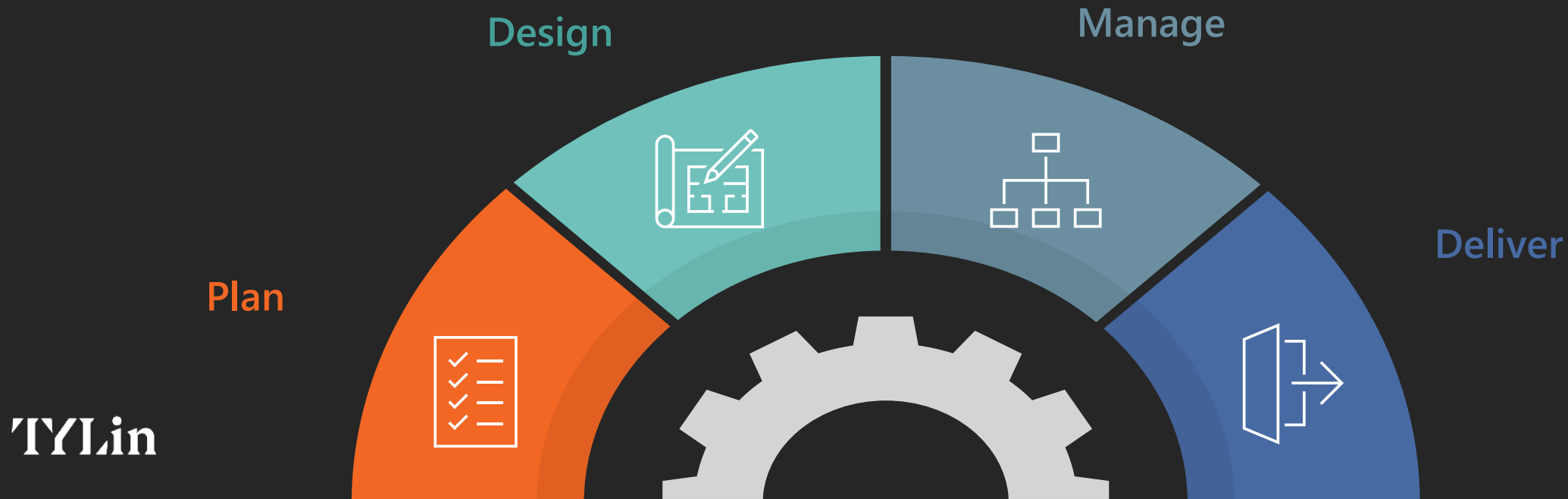
**65+**  
Offices

**Global**  
Connections

# Who We Are

TYLin is a full-service infrastructure consulting firm supporting public agencies with planning, design, program management, construction management, and delivery of complex transportation systems.

Across TYLin and Introba we bring integrated expertise in transportation, buildings, systems, sustainability, and infrastructure.



# Transit-focused capabilities

- Rail and transit planning
- Bus rapid transit and corridor design
- Stations and passenger facilities
- Yards and maintenance facilities
- Bridges, structures, and civil infrastructure
- Systems, power, communications, and MEP
- Program management and construction management
- Alternative delivery and risk-informed delivery strategy

**Built for complex transit programs that must be planned, designed, phased, and delivered while systems remain active.**



# Supporting WMATA's Priorities

Metro's capital program is focused on restoring, sustaining, and modernizing the system while improving safety, reliability, access, and customer experience.

TYLin's experience aligns with several areas of continued investment:

Modernizing	Modernizing critical assets Stations, structures, yards, maintenance facilities, and systems that keep the network operating.
Improving	Improving customer movement and access Station capacity, accessibility, multimodal connectivity, and passenger circulation.
Delivering	Delivering while systems stay active Phasing, constructability, risk management, and maintaining operations during construction.
Building	Building future-ready corridors BRT, transit priority, bus-rail connectivity, and regional mobility improvements.

# Where We See Opportunities to Team

TYLin anticipates continued teaming needs across transit planning, engineering, program management, construction management, and alternative delivery support.

<b>Opportunity Area</b>	<b>TYLin Focus</b>	<b>Small Business Roles</b>
<b>BRT + Transit Corridors</b>	Corridor planning, transit priority, civil design, multimodal access, phasing	Traffic, survey, utilities, environmental/NEPA, public engagement, civil support
<b>Stations + Passenger Facilities</b>	Station planning, access, circulation, structures, MEP, constructability	Architecture, structural, MEP, fire/life safety, pedestrian modeling, inspection
<b>Yards + Maintenance Facilities</b>	Facility modernization, active operations, phasing, track, systems, commissioning	Civil, structural, track, MEP, industrial systems, geotechnical, commissioning
<b>State of Good Repair + Systems</b>	Structural rehabilitation, power, communications, controls, asset renewal	Inspection, testing, commissioning, systems support, field engineering
<b>PMCM + Program Delivery</b>	Program controls, construction management, risk, quality, safety	Scheduling, estimating, document control, resident engineering, inspection
<b>Alternative Delivery</b>	Design-build, progressive design-build, CMAR, procurement support, risk strategy	Cost validation, constructability, interface management, project controls

# BRT and Transit Corridors

## TURNING CORRIDOR PLANS INTO RELIABLE, CONNECTED TRANSIT SERVICE

BRT and corridor programs require more than roadway design. Successful delivery depends on balancing transit speed, traffic operations, pedestrian access, curb activity, utilities, stations, community priorities, and future network growth.

### Relevant TYLin strengths

- Corridor planning and concept development
- Transit priority and operations support
- Civil and roadway design
- Station/platform interface planning
- Multimodal access and first/last mile connectivity
- Environmental and community considerations
- Phasing and implementation strategy

### Why small business partners matter

We often need partners with strong local knowledge, traffic and transit operations expertise, public engagement experience, survey, utilities, civil design, and environmental support.

# Bus Rapid Transit – Coast to Coast

- Land Use Redevelopment Planning
- Planning for Fleet and Facilities
- Roadway, Stations, Terminals and Bus Maintenance Facility Design
- RTVL and Scheduling



CHICAGO, ILLINOIS, USA  
Western and Ashland Avenues  
BRT Land Use Development Plan



NEW YORK, NEW YORK, USA  
MTA Fleet and  
Facility Modernization



PHILADELPHIA, PENNSYLVANIA, USA  
SEPTA Real Time  
Vehicle Location



SAN DIEGO, CALIFORNIA, USA  
I-15 Express/BRT Lanes  
Improvement



SEATTLE, WASHINGTON, USA  
Seattle DOT RapidRide J Line

# Stations and Passenger Facilities

## DESIGNING FOR ACCESS, CAPACITY, AND ACTIVE OPERATIONS

Station projects are often some of the most visible and complex transit investments. They affect how customers enter, move through, transfer, and experience the system.

### Relevant TYLin strengths

- Station planning and design
- Passenger circulation and access improvements
- ADA and vertical transportation coordination
- Structural and civil design
- MEP and fire/life safety coordination
- Phasing around active service
- Constructability and stakeholder coordination

### Small business partner needs

Architecture, structural engineering, MEP, fire/life safety, vertical transportation, pedestrian modeling, survey, utilities, cost estimating, scheduling, inspection, and field engineering.

# WMATA GAEC Contract: PSDG-001 Platform Door Assessment

## ENGINEERING ASSESSMENT

- Building off our experience with the NYCT Platform Screen Door Pilot
- National and International Experience
- In support of WMATA's \$900M+ investment into signal modernization along the Red Line



# Yards and Maintenance Facilities

## MODERNIZING THE FACILITIES THAT KEEP TRANSIT SYSTEMS MOVING

Yards and maintenance facilities are essential to reliable service. These projects often involve complex phasing, active operations, safety constraints, specialized systems, and coordination between infrastructure, vehicles, workforce needs, and future service plans.

### Relevant TYLin strengths

- Rail and bus maintenance facility planning
- Yard modernization and optimization
- Track, civil, structural, and systems coordination
- MEP and industrial facility support
- Active operations phasing
- Program and construction management
- Commissioning and transition planning

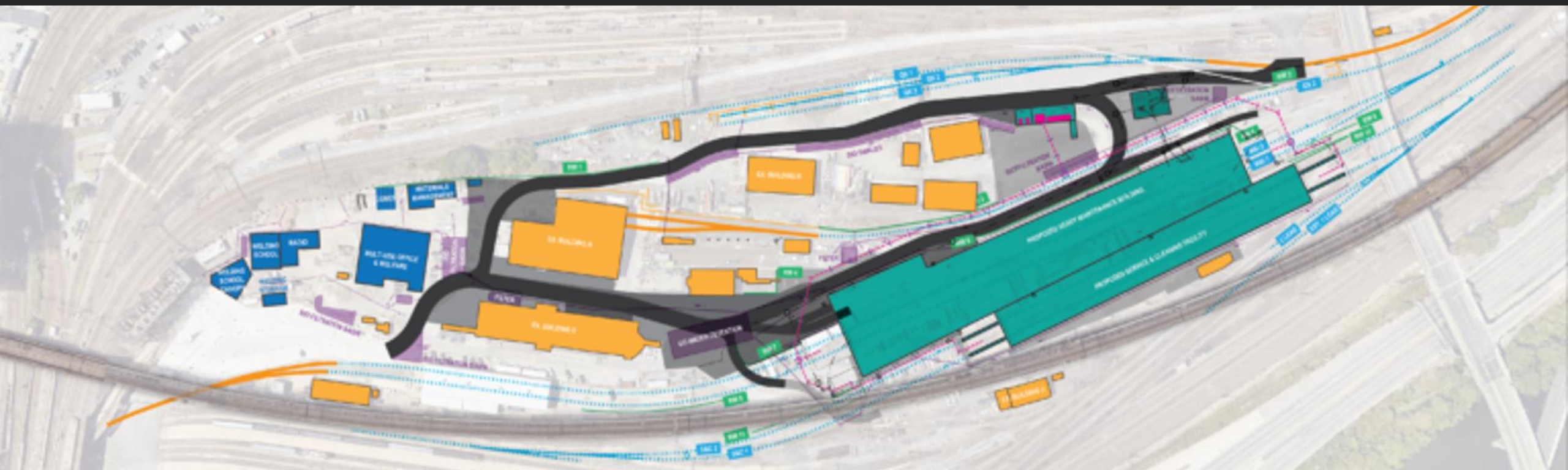
### Small business partner needs

Civil, structural, track, MEP, industrial systems, survey, geotechnical, environmental, commissioning, safety, scheduling, estimating, inspection, and document controls.

# Amtrak Penn Coach Yard, Philadelphia

EOR FOR DESIGN BUILD FOR HERZOG CONSTRUCTION COMPANY (\$460M)

- 30 Acres, Seven new training and office buildings, state of the art heavy maintenance facility and S&C buildings
- Design PM, Structural, Site Civil, Site Lighting, MEP, Industrial, Track, Systems, Substation
- Stormwater analysis, design and permitting



# Program Delivery and Alternative Delivery

## MANAGING RISK EARLIER, ALIGNING TEAMS SOONER, AND IMPROVING DELIVERY OUTCOMES

As transit programs become more complex, delivery strategy matters. TYLin supports agencies and delivery teams through planning, procurement, design management, program controls, construction management, and risk-informed delivery.

### Relevant TYLin strengths

- Program management
- Construction management
- Design-build and progressive design-build support
- CMAR support
- Risk identification and mitigation
- Constructability reviews
- Cost and schedule validation
- Interface management
- Claims avoidance and resolution
- Owner's representative support

### Small business partner needs

Cost estimating, scheduling, risk management, project controls, document control, constructability, inspection, resident engineering, quality, safety, and technical discipline support.

# How to Get Started

We want to make it easy for qualified small businesses to connect with our team and be considered for upcoming opportunities.

1



2



3



4

**Step 1, Register with WMATA**

Create and maintain your profile in WMATA's Supplier Portal and monitor upcoming solicitations and capital project opportunities.

**Step 2, Share your qualifications with TYLin**

Send a concise capability statement that clearly identifies your services, certifications, project experience, key staff, geographic reach, and relevant WMATA or transit experience.

**Step 3, Tell us where you fit**

Be specific about the types of roles you are best positioned to support, such as stations, BRT, facilities, systems, PMCM, inspection, project controls, or public engagement.

**Step 4, Stay connected**

Meet our team today, connect after the event, and keep us informed as your firm grows or adds new capabilities.

# What We Look for in Small Business Partners

TYLin is looking for partners who can contribute meaningfully to project delivery and grow with us over time.

## We value partners who bring:

- Relevant transit or infrastructure experience
- Strong technical leadership in a defined service area
- Local knowledge of the DMV region
- Clear understanding of active transit environments
- Reliable project delivery and communication
- Commitment to safety, quality, and collaboration
- Interest in long-term teaming relationships

## Our goal

Meaningful roles, not check-the-box participation.



# Ways to stay connected

## WMATA resources

- Register in the WMATA Supplier Portal
- Sign up for Metro's Capital Project Opportunities Quarterly Newsletter
- Monitor WMATA solicitations, RFQs, RFPs, and industry outreach events
- Contact WMATA Market Outreach for procurement and supplier questions

## TYLin resources

- Meet us at the exhibit table today
- Share your capability statement
- Connect with our WMATA pursuit and delivery leaders
- Let us know which upcoming opportunity areas best fit your firm



# Let's Connect

Thank you to WMATA's Small Business Programs Office and to everyone here today.

We look forward to meeting firms that can help deliver safe, reliable, accessible, and future-ready transit infrastructure for the region.

## John Daza, PE

R+T and PM+CM Manager,  
Mid-Atlantic

[John.Daza@TYLin.com](mailto:John.Daza@TYLin.com)

301.204.1489

## Tracy Bowdwin

Rail & Transit

Sr. Program Manager,

[tracy.bowdwin@tylin.com](mailto:tracy.bowdwin@tylin.com)

347.899.0328

## Chetna Sinha

Client Experience + Marketing  
Director

[chetna.sinha@tylin.com](mailto:chetna.sinha@tylin.com)

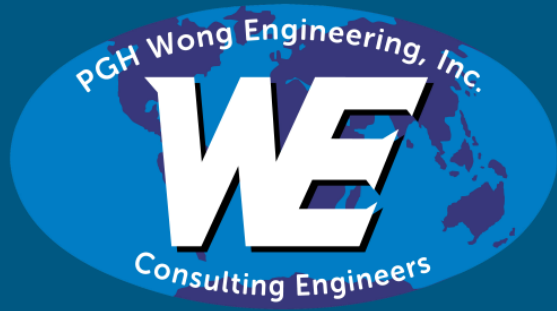
202.878.6706

# Introducing:



[www.pghwong.com/](http://www.pghwong.com/)

Washington Metropolitan Area Transit Authority



# WMATA Meet the Primes Event

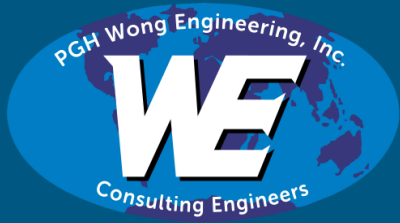
---

**Professional Services  
Subconsultant Outreach Event**

June 18, 2026

*Welcome*





# Agenda

1. Introduction
2. Contract Opportunities
3. How to Get Started
4. Support and Resources

WE



# 1. Introduction

**WE**



# Our Background



Established in 1985 as a Small, Minority-owned Firm



Among the Most Sought-After Transit Consultants in the Nation

Selected Repeatedly Due to a High Degree of Success



Expertise in all Aspects of Rail Transit Engineering

- Civil, Structures, Architecture, Facilities, Systems
- Construction Management
- Program/Project Management
- Testing and Startup Specialists



Industry Applications

- Project/Construction Management Software
- Rail Simulation Software



Proven Service and Dedication to Our Clients



# Rail Transit Specialists

## Our Services

- Program/Project Management
- Planning/Feasibility Studies
- Engineering Design
- Construction Management
- Testing/Startup/Commissioning

## Disciplines

- Architecture
- Civil/Structural Engineering
- Systems Engineering
- Electrical Engineering
- Mechanical Engineering
- Commissioning
- Risk Management
- Operations/Signaling/Traction Power Simulations
- Construction Management Software
- Hospitality Consulting
- Software Development/Licensing

# Washington Metropolitan Area Transit Authority (WMATA)

General Architectural and Engineering Services (GAES), Washington, DC

- 7-Year Contract
- PGH to Provide Services in Support of the Ongoing Capital Improvement Program/Maintenance Program; Categories Include:
  - Heavy Mechanical (Central Systems)
  - Buildings/Facilities
  - Signaling Systems
  - Communications
  - Civil/Structural
  - Power Systems (LV/HV, AC/DC)



# Washington Metropolitan Area Transit Authority (WMATA)

PM/CM, Washington, DC

- 7-Year Contract
- PGH to Provide Support of Transit-Related Program Management/Construction Management (PM/CM) Tasks:
  - Buildings & Facilities
  - Communications
  - Heavy Mechanical
  - Power Systems (LV/HV, AC/DC)
  - Signaling



# Various Agencies

## Prime On-Call Contracts

- BART, General Engineering Consultant, CA
- BART, General Construction Management (GCM), CA
- SFMTA, As Needed Specialized Engineering Services, CA
- SFCTA, On-Call Project Management and Engineering, CA
- Phoenix Valley Metro, On-Call, AZ
- Sound Transit MATOC PMCM



# Massachusetts Bay Transportation Authority (MBTA)

## Design Services for Traction South Boston Power Complex Study

- \$5m Contract
- Evaluation of Power and Traction Power Systems
- Upgrade and Building New South Boston Power Plant



## Bi-State Development

Design Engineering Consultant,  
St. Louis Metrolink Greenline, MO

- Prime Design Engineering Consultant, Preliminary Design
- 5.72 Mile Light Rail Through Urban Area
- 10 Stations

*PGH Wong Engineering, Inc. has been providing retrofit and new design services to Bi-State since 1987 on the initial line.*



# Valley Metro Rail (VMR)

## Various Light Rail Transit Contracts, AZ

- Prime Consultant
- \$712 Million Overall

### Central Phoenix/East Valley

- Construction Management Services
- 5 Mile Double-Track Extension
- 11 Passenger Stations
- 1 Park-and-ride Lot

### Northwest Extension Phases I & II

- Design Services
- 1.55 Mile Extension
- 2 At-grade Passenger Stations
- 1 Aerial Passenger Station

### Gilbert Road Extension (CM/GC)

- Construction Management Services
- 1.9 Mile Extension
- 4 Miles of Embedded Track
- 2 Light Rail Stations
- 1 Transit Center With Bus Service
- 1 Park-and-ride

### Central Mesa Extension

- Design Services
- 3.1 Mile Extension
- 4 Stations
- 1 Transit Center
- 1 Park-and-ride



## Peninsula Corridor Joint Powers Board

### Caltrain Peninsula Corridor Electrification Program, San Mateo, CA

- \$1.3 Billion Overall
- Lead Design Consultant
- 52 Miles of Overhead Contact Systems
- Traction Power Facilities
- SCADA/Communications Integration
- Program Replaced 75% of Caltrain's Diesel-electric Locomotive-powered Trains With High-performance Electric Multiple Units (EMUs)

#### Award Winning

2025 Civil Construction Collaborative Project Award, International Partnering Institute (IPI)



## Santa Clara Valley Transportation Authority (VTA) BART Silicon Valley Phase II, CA

- Prime Consultant for General Engineering Services in a Joint Venture
- \$12.7 Billion
- 6 Mile Extension
- 4 Stations (3 Underground and 1 At-grade Terminal Station)
- 5 Mile Tunnel Through Downtown
- Newhall Yard and Maintenance Facility and Storage Yard



# Overall DBE/SBE Success – Exceeding Goals

Project/Contracts	DBE Goal	 Current Achievement
Sound Transit, Lynnwood Link Extension, WA	6% DBE / 12% SBE	10% DBE / 35% SBE
VTA, BART Silicon Valley Phase II GEC, CA	15.55% DBE	17.1% DBE
BART, Hayward Maintenance Complex Phase 2, CA	25% DBE	29% DBE
BART, East Contra Costa BART (eBART), CA	20% DBE	30% DBE
BART, Irvington Infill Station, CA	24% DBE	28% DBE
VTA, BART Berryessa Extension, CA	18% DBE	21% DBE
PCJPB, Caltrain Peninsula Corridor Electrification, CA	8% DBE	13% DBE
California High-Speed Rail CP 1 PM/CM Support Services, CA	10% DBE	17.2% DBE
LA Metro, Westside Purple Line Subway Extension Section 3, CA	39.43% DBE	43% DBE
Valley Metro Rail (Phoenix) Systems Design Services, AZ	2.03% SBE	17.60% SBE

## Example of our Success

2019 Sound Transit Champions of Inclusion Award

2019 Sound Transit Office of Small Business Development & Labor Compliance Champion of Small Business Award



## 2. Contracting Opportunities

WE



# Contracting Opportunities Design Services Needed

Geotechnical engineering

Landscape Planning/Design

Utilities

Traffic Planning/Eng

Public Outreach

Cost Estimating

Scheduling

Project Controls

MEP

Architecture

Rail Vehicles

Environmental

Safety/Security

Hydrology/Hydraulics

Noise And Vibration

Structural Engineering

Surveying

Water/WW

Facilities/Infrastructure

Parking Facilities

ADA

Row

Inspection

Field Engineering

Traffic Coordination

Utilities Coordination

Document Control

Claims Analysis/Support

Value Engineering

Labor Compliance

Aerial Photography

Materials Testing/Inspection



# Project Opportunities

Rail Transit – Light Rail, Heavy Rail, Commuter Rail, Streetcars, Maintenance Facilities

- WMATA
- Upcoming:
  - Boston
  - New York
  - Atlanta
  - Maryland
  - N. Carolina
  - San Francisco
  - Los Angeles
  - San Diego
  - Seattle
  - Phoenix
  - Sacramento



# Things We Look for in a Team Member

- Staff Experienced in Similar Projects
- Experience with Local Transit Agencies
- Knowledge of the Project and its Challenges
- Ideas and Contributions to the Scope
- Local/State Required Certification



Firm and  
Personnel  
Experience



NOT Based on  
WMATA  
Experience Alone



# 3. How to Get Started

WE



# How to Submit Qualifications to PGH Wong

## Qualifications Submissions

- Firm Overview, Certifications, Services

## Example Relevant Projects

- 2-3 Projects Max
- Applicable References

## Resumes of Proposed Personnel

- 2 Pages Max



## Questions/Email Submissions to:

Gerry Yoes, PGH Wong  
Business Development Manager  
(415) 566-0800 Ext. 167  
[gyoes@pghwong.com](mailto:gyoes@pghwong.com)



# 4. Support and Resources

WE



# Support and Resources

## Procurement Phase

- **Comprehensive, Equity-Based Good Faith Effort:** Proactive subconsultant outreach, evaluation, and selection
- **Resource Assistance:** Small Business; public agencies and consultant contacts

## Project Phase

- Promote Collaborative Team Culture
- One-on-One & Group Training
- Monthly Group Discussions
- Mentor Protege Programs



# Question and Answers

WE



*Thank You!*

Questions/Email  
Submissions to:

Gerry Yoes, PGH Wong  
Business Development  
Manager  
(415) 566-0800 Ext. 167  
[gyoes@pghwong.com](mailto:gyoes@pghwong.com)



# Introducing:



[www.exp.com](http://www.exp.com)

Washington Metropolitan Area Transit Authority



---

# WMATA

**METRO'S MEET THE PRIMES  
ENGINEERING EDITION  
JUNE 2026**

*Image © craig denis creative*



UNDERSTAND | INNOVATE | PARTNER | DELIVER

## A MESSAGE FROM AMIR:

Good morning and thank you for the opportunity to join WMATA's Meet the Primes – *Engineering Edition*.

While I regret that I am unable to attend today, I would like to extend my sincere appreciation to WMATA for the continued partnership and the opportunities to support your mission. We highly value the trust WMATA places in EXP and are proud to contribute to projects that improve mobility, safety, and the rider experience across the region.

Our team remains fully committed to delivering innovative, high-quality solutions that help advance WMATA's capital program and long-term vision.

Today, I am pleased to have our team, led by **Jim Zhao and Svetan Veliov**, present on my behalf and share more about EXP's capabilities, experience, and approach to supporting WMATA.

Thank you again, and I hope you have a productive and engaging event!



# 25+

years' experience of  
engineering design  
experience

FOCUS ON BRIDGES, STRUCTURES, SEISMIC  
ANALYSIS AND ALTERNATIVE DELIVERY PROJECTS

## SPECIALTIES

- Bridge design and rehabilitation
- Structural and seismic analysis
- Nonlinear finite element modeling
- Prestressed concrete behavior research
- Design-build project delivery
- Heavy rail and transit
- Accelerated bridge construction methods

## OUR COMMITMENT TO SMALL BUSINESSES AND PARTNERSHIPS

At EXP, we are strongly committed to supporting WMATA's Small Business Programs and fostering meaningful, long-term partnerships.

- We actively seek to collaborate with small, local, and diverse businesses across all disciplines
- We believe strong partnerships drive innovation, efficiency, and successful project delivery
- We are committed to creating inclusive opportunities and building lasting relationships within the community
- We value our partners as an integral part of our project teams

### Let's Partner Together!

EXP is always open to exploring new teaming opportunities and collaborations with small businesses.

## ABOUT US

With a mission to understand, innovate, partner and deliver, EXP provides engineering, architecture, design and consulting services to the world's built and natural environments.

Our heritage dates back to 1906, when the earliest of EXP's predecessor companies started its engineering infrastructure practice.

Today, thousands of creative EXP professionals provide the passion and experience needed to deliver successful projects around the world.

---

**120**  
years of service

**100+**  
offices + labs

---

**40+**  
years in alternative  
project delivery

**#25**  
Top 500 Design Firms  
ENR, 2025

---

**PLATINUM**  
Top100 Canada's Biggest  
Infrastructure Projects  
ReNew Canada, 2026

**5000+**  
architects + engineers



## TRANSIT OVERVIEW

### Award-winning, multidisciplinary solutions across transit

As a multidisciplinary practice, EXP offers diverse experience in planning, design, project management and construction phase services for transit projects. We have designed award-winning stations for urban transit systems; provided integrated services for operations centers, maintenance facilities and multi-modal hubs; and led construction phase services such as tunnel monitoring and on-site construction engineering and inspection (CEI).

**65+**  
years of railway +  
transit experience

**120**  
years of experience  
in infrastructure and  
transportation

**#13**  
Bridges,  
Top Design Firms in  
Transportation  
ENR, 2025

**#21**  
Mass Transit + Rail,  
Top Design Firms in  
Transportation  
ENR, 2025

## PROJECT TYPES



CONCOURSES +  
STATIONS



LIGHT TRANSIT  
RAIL (LTR)



COMMUTER  
RAIL



SUBWAYS



ELEVATED  
RAIL



HEAVY RAIL  
TRANSIT (HRT)



HIGH SPEED  
RAIL (HSR)



BUS  
FACILITIES



BUS RAPID  
TRANSIT (BRT)



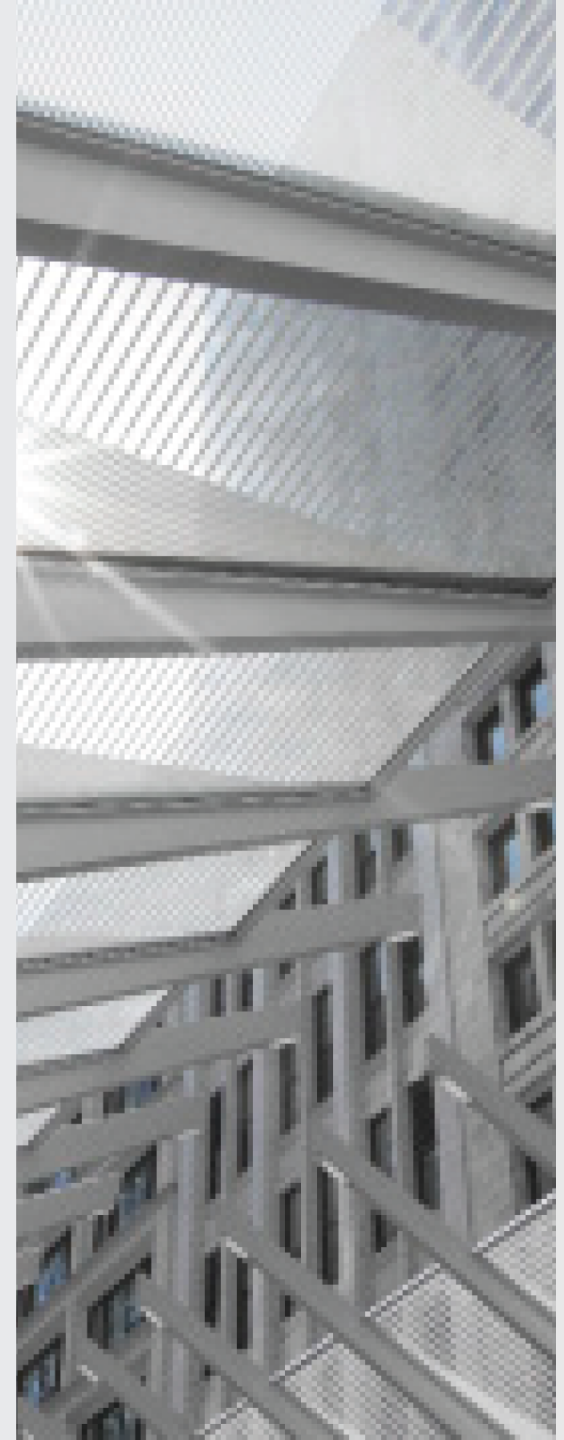
PEOPLE MOVERS



STREETCARS



MAINTENANCE  
FACILITIES



# KEY SERVICES →

## CIVIL

- Track / Guideway Design
- Transit Structures
- Transportation Planning
- Traffic Engineering + Modeling
- Roadway Design
- Environmental
- Geotechnical
- Survey + Geomatics
- Pre-construction Conditions Surveys
- Instrumentation Installation + Monitoring
- Water + Wastewater

## STATIONS + FACILITIES

- Architecture + Design
- Building Structures
- Mechanical
- Electrical
- Plumbing + Fire Protection
- Station Technology
- Commissioning
- Construction Management
- Urban Planning + Design
- Landscape Architecture
- Land Development

## SYSTEMS + SPECIALTY SERVICES

- Systems + Specialty Services
- Electrification / OCS
- Communications
- ITS
- Systems Assurance
- SCADA
- Security
- Lighting Design
- Materials Testing
- Construction Engineering + Inspection (CEI)
- Program Management
- Project Management
- Sustainability + LEED
- Health + Safety



# SELECT RAIL + TRANSIT PROJECTS

- 1 Vancouver, BC, Canada**
- TransLink Commercial-Broadway SkyTrain Expansion
  - Broadway Subway

- 2 Los Angeles and Riverside, CA, USA**
- Los Angeles Streetcar
  - Los Angeles Metro Rail - Expo Line
  - Riverside Streetcar Peer Review

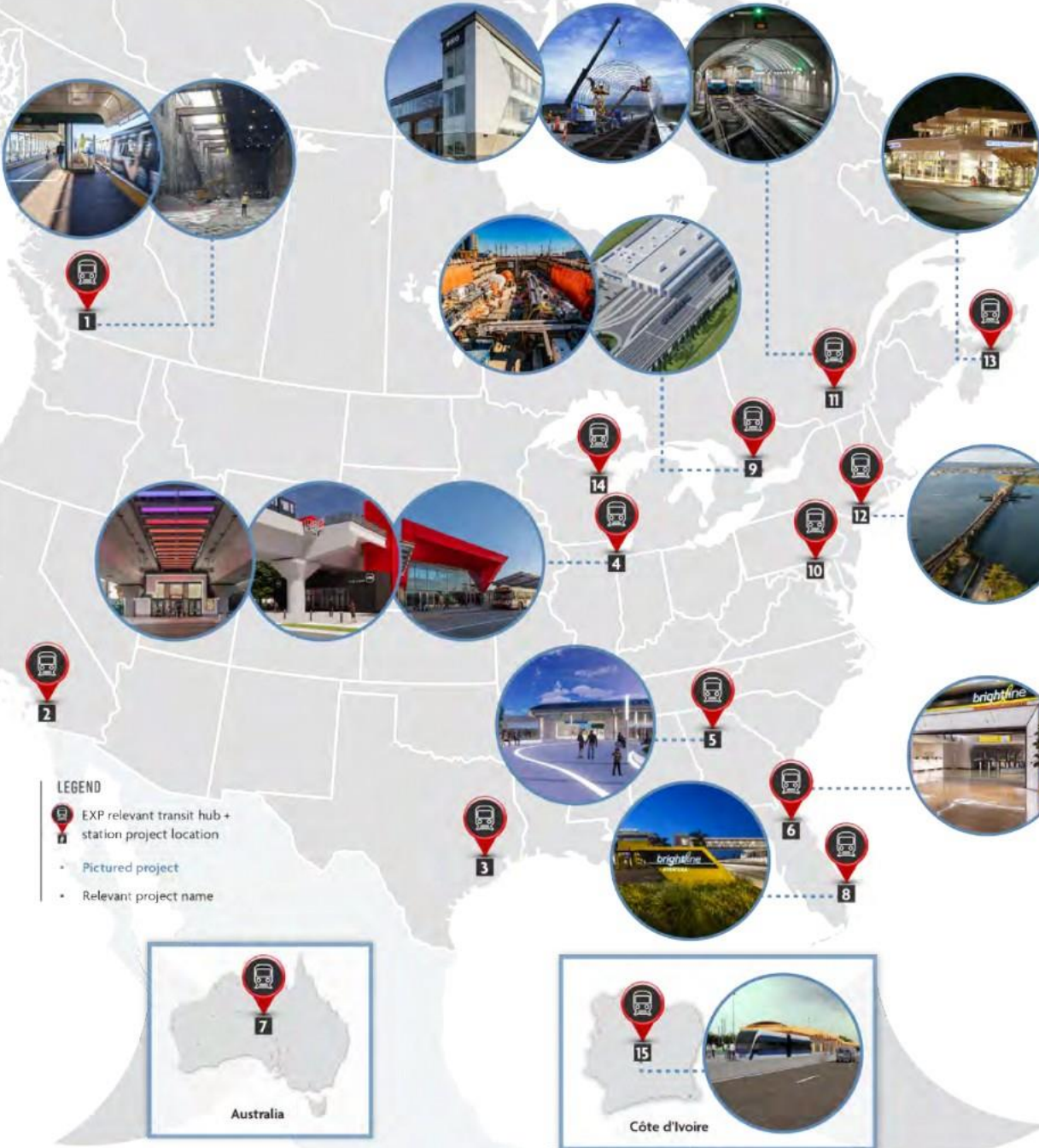
- 3 Houston, TX, USA**
- Houston METRO Environmental Engineering and Assessment Services

- 4 Chicago, IL, USA (and surrounding area)**
- CTA Red-Purple Modernization
  - CTA Red Line Extension
  - CTA 95th/Dan Ryan Intermodal Terminal Station Expansion + Renovation
  - CTA South Mainline Garfield Gateway Station Renovation
  - CTA Blue Line Illinois Medical District (IMD) Station Rehabilitation
  - CTA Quincy Loop Station Restoration + Expansion
  - CTA Western Blue Line Station Reconstruction
  - Chicago O'Hare International Airport Transit System (ATS), Chicago, IL
  - Metra Peterson-Ridge Station
  - Metra Layover Facility
  - Metra Central St Station
  - Metra Johnsburg Commuter Train

- 5 Atlanta, GA, USA (and surrounding area)**
- MARTA Indian Creek Station Rehabilitation
  - MARTA Five Points Station
  - MARTA Bankhead Station

- 6 Orlando, FL, USA**
- Brightline Orlando Station Lighting Design
  - Hillsborough HART, General Engineering Contract

- 7 Australia**
- KiwiRail Wellington Electrified Area Power Modelling Analysis
  - KiwiRail Wellington Electrified Area Extension - Waikanae-Otaki-Levin Analysis

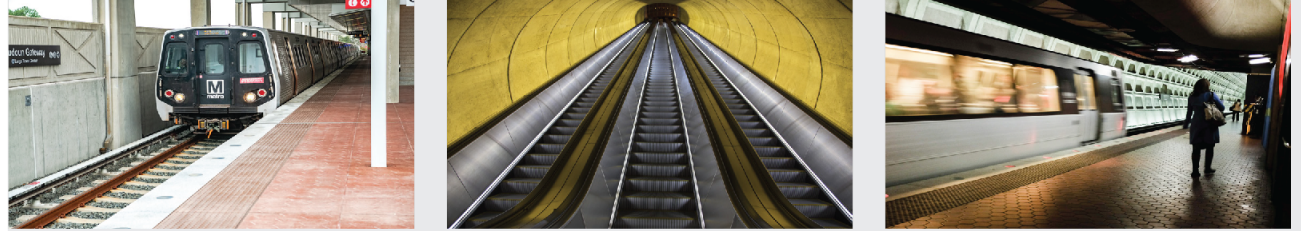


**LEGEND**

- EXP relevant transit hub + station project location
- Pictured project
- Relevant project name

- 8 Miami, FL, USA (and surrounding area)**
- Brightline Aventura Station
  - Brightline Boca Station
  - Brightline Rail Corridor Modeling
- 9 Toronto, ON, Canada (and surrounding area)**
- Eglinton Crosstown West Extension Advance Tunnel
  - Hurontario Light Rail Transit (LRT)
  - Eglinton Light Rail Transit (LRT)
  - Yonge North Subway Extension Advanced Tunnel
  - Toronto York Spadina Subway Extension (TYSSE)
  - London Rapid Transit and Infrastructure Program
  - West Harbour GO Station
  - Davenport Diamond Rail Grade Separation
  - Toronto Union Station Train Shed Renewal
  - VIA Bus Rapid Transit
- 10 Aberdeen, MD and Washington, DC, USA**
- MARC Station Connectivity Enhancements
  - WMATA Crystal City Station
  - WMATA Various Projects
- 11 Montreal, La Pocatière and Lévis, QC, Canada**
- Pointe-Saint-Charles Maintenance Centre
  - Bombardier Multifunctional Test Track
  - Montréal Metro Blue Line Expansion
  - Montréal Metro Blue
  - Quebec-Central Railway
- 12 New York, NY, USA**
- MTA Rockaway Line Resiliency + Rehabilitation
  - MTA C&D Design-Build Services for the Replacement of Escalators
  - Amtrak Sunnyside Yard Projects
- 13 Halifax, NS, Canada**
- Halifax Regional Metro Transit Bridge Terminal
- 14 Milwaukee, WI, USA**
- WisDOT General Mitchell Airport Rail Passenger Station Platform
  - WisDOT High Speed Rail Program
- 15 Abidjan, Côte d'Ivoire**
- Abidjan Bus Rapid Transit (BRT)

# WMATA PROJECT EXPERIENCE



## BETHESDA STATION SOUTH MEZZANINE

Design and construction of a new south mezzanine and entrance at the Bethesda Metrorail Station

**Delivery Type:** Design-Build | **Design-Build Team:** EXP & Clark | **Role:** Prime Designer | **Services:** Architecture, Structural, MEP | **Construction Cost:** \$52M | **Design Fee:** \$3.6M | **Project Duration:** 2024 - 2027 | **Status:** Under construction

## CRYSTAL CITY EAST ENTRANCE

Design and construction of a new street-level entrance at the east end of the existing Crystal City Metro Station

**Delivery Type:** Design-Build | **Design-Build Team:** EXP, VHB & Clark | **Role:** MEP Lead Designer | **Services:** MEP | **Construction Cost:** \$146M | **Design Fee:** \$5.8M | **Project Duration:** 2023 - 2027 | **Status:** Under construction

## GROSVENOR-STRAITHMORE PLATFORM REHABILITATION

Design and reconstruction of the Grosvenor-Strathmore Station platform. The work includes redesigning the structural platform edge to accommodate future platform screen doors.

**Delivery Type:** Design-Build | **Design-Build Team:** EXP & Clark | **Role:** Prime Designer | **Services:** Architecture, Structural, MEP | **Construction Cost:** \$25M | **Design Fee:** \$1.8M | **Project Duration:** 2025 - 2026 | **Status:** IFC Submission

## A/E SERVICES FOR WAYSIDE WORK PLANNING SUPPORT

Staff augmentation services to support planning, scheduling, and coordination of track access, maintenance, and capital improvements across WMATA's rail infrastructure

**Delivery Type:** PM/CM - Staff Augmentation | **Team:** EXP, with TYLin and SZ PM as subcontractors | **Role:** Prime | **Design Fee:** T&M up to \$3.8M | **Project Duration:** 2025 - 2026 (Base Year) | **Status:** On-going - Base Year

## ELEVATOR AND ESCALATOR SUPPORT SERVICES:

Staff augmentation support to WMATA, with a focus on mechanical engineering, specification writing, and code compliance for elevator and escalator support services

**Delivery Type:** PM/CM - Staff Augmentation | **Team:** EXP, with FOXXSTEM as subcontractor | **Role:** Prime | **Design Fee:** T&M up to \$900K | **Project Duration:** 2026 - 2027 | **Status:** On-going

## SEWAGE EJECTOR REPLACEMENT

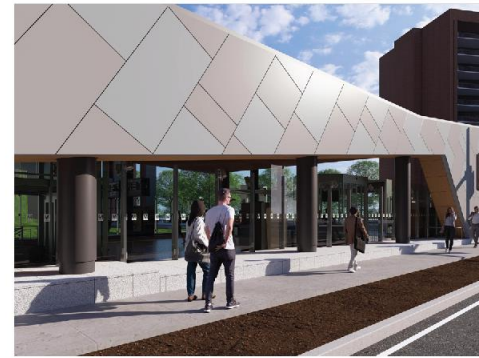
Replacement of sewage ejector systems at 18 Metrorail stations

**Delivery Type:** GAES (General Architectural and Engineering Services) | **Team:** EXP | **Role:** Prime Designer | **Services:** Architecture, Structural, MEP | **Design Fee:** \$1.7M | **Project Duration:** 2026 - 2027 | **Status:** On-going

## BRIDGE INSPECTION TRAFFIC CONTROL

Traffic control design, traffic management plan development, and permitting services in support of WMATA bridge inspections across the DMV region. The team coordinates with multiple jurisdictions, including VDOT, DDOT, MDOT SHA, counties, and municipalities, to obtain maintenance of traffic permits for WMATA.

**Client:** Dynamic Concepts Inc. | **Contract Type:** Fixed Fee (Lump Sum) | **Team:** DCI & EXP | **Role:** Subcontractor/Designer | **Design Fee:** \$1.12M | **Project Duration:** 2024 - 2029 | **Status:** On-going



**Crystal City Metro Station East Entrance**

Washington Metropolitan Area Transit Authority (WMATA)  
Crystal City, VA, USA

*Role: Mechanical, electrical, plumbing, vertical transportation, fire + life safety, systems + security*

**DESIGN/BUILD**

delivery

**5,500**

average daily entries

**SECOND**

entrance

**TRANSIT-ORIENTED**

urban community



**Bethesda Station New Mezzanine**  
Washington Metropolitan Area  
Transit Authority (WMATA)  
Bethesda, MD, USA

*Role: Architecture, structural,  
mechanical electrical, plumbing, fire  
protection, vertical transportation,  
safety + security*

**DESIGN/BUILD**

delivery

**MEZZANINE**

over active track + exit fare  
equipment

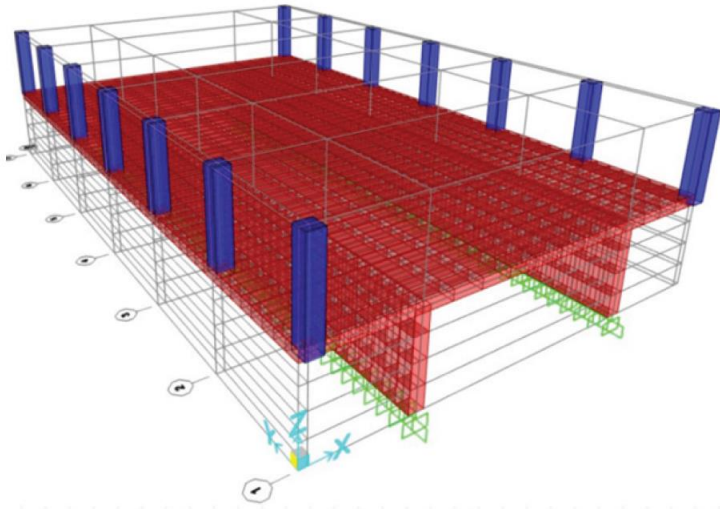
**NEW**

elevators + escalators

**FUTURE CONNECTION**

to the new Purple Line Bethesda  
Station





**Grosvenor-Strathmore Station Platform Rehabilitation**

WMATA  
Bethesda, MD, USA

*Role: Structural, mechanical, electrical, plumbing, communications, fire + life safety*

**REHABILITATION**

of platform + aerial structure

**DESIGN-BUILD**

delivery



**Wayside Work Planning Support**

WMATA  
Washington, DC, USA

*Role: Staff augmentation*



**Sewage Ejector Replacement - Phase B**

WMATA  
Washington, DC, USA

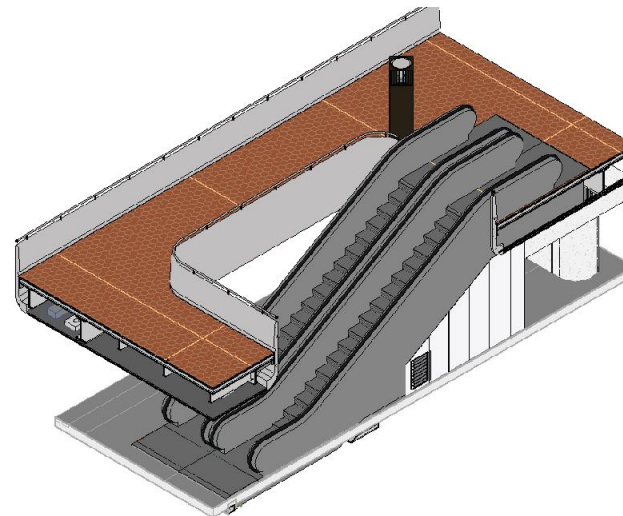
*Role: Mechanical, electrical, plumbing, structural, communication*

**18**

stations

**CONDITION**

assessments



**Elevator + Escalator Support Services**

WMATA  
Washington, DC, USA

*Role: Mechanical, electrical, software, specification writer*

**STAFF**

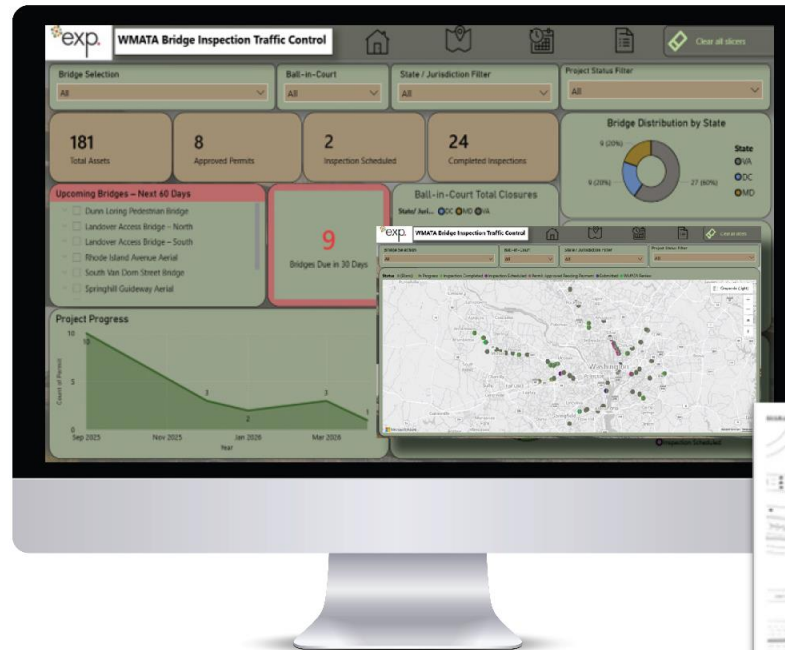
augmentation

**CONDITION**

assessments

# WMATA BRIDGE INSPECTION TRAFFIC CONTROL PLANS + PERMITTING

- Manage the project - WMATA, DCI, WSP
- Develop Engineering Plans
  - Transportation Management Plans
  - Traffic Control Plans
- Permitting + Jurisdiction Coordination
- Document Management - ProCore, SharePoint, PowerBI
  - Live + Interactive Project Data



**DASHBOARD**

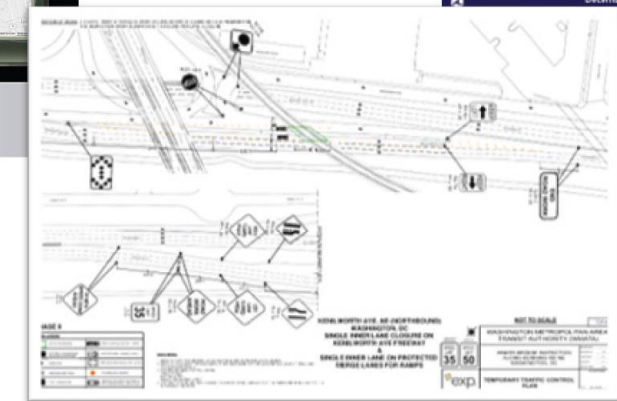
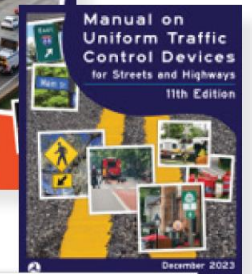
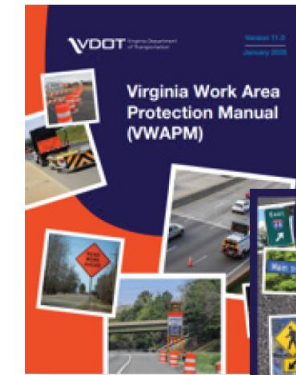




Image courtesy of Chicago Transit Authority (CTA)



**Chicago Transit Authority (CTA)**  
**Red Line Extension**  
 Chicago, IL, USA

*Role: architecture and engineering*

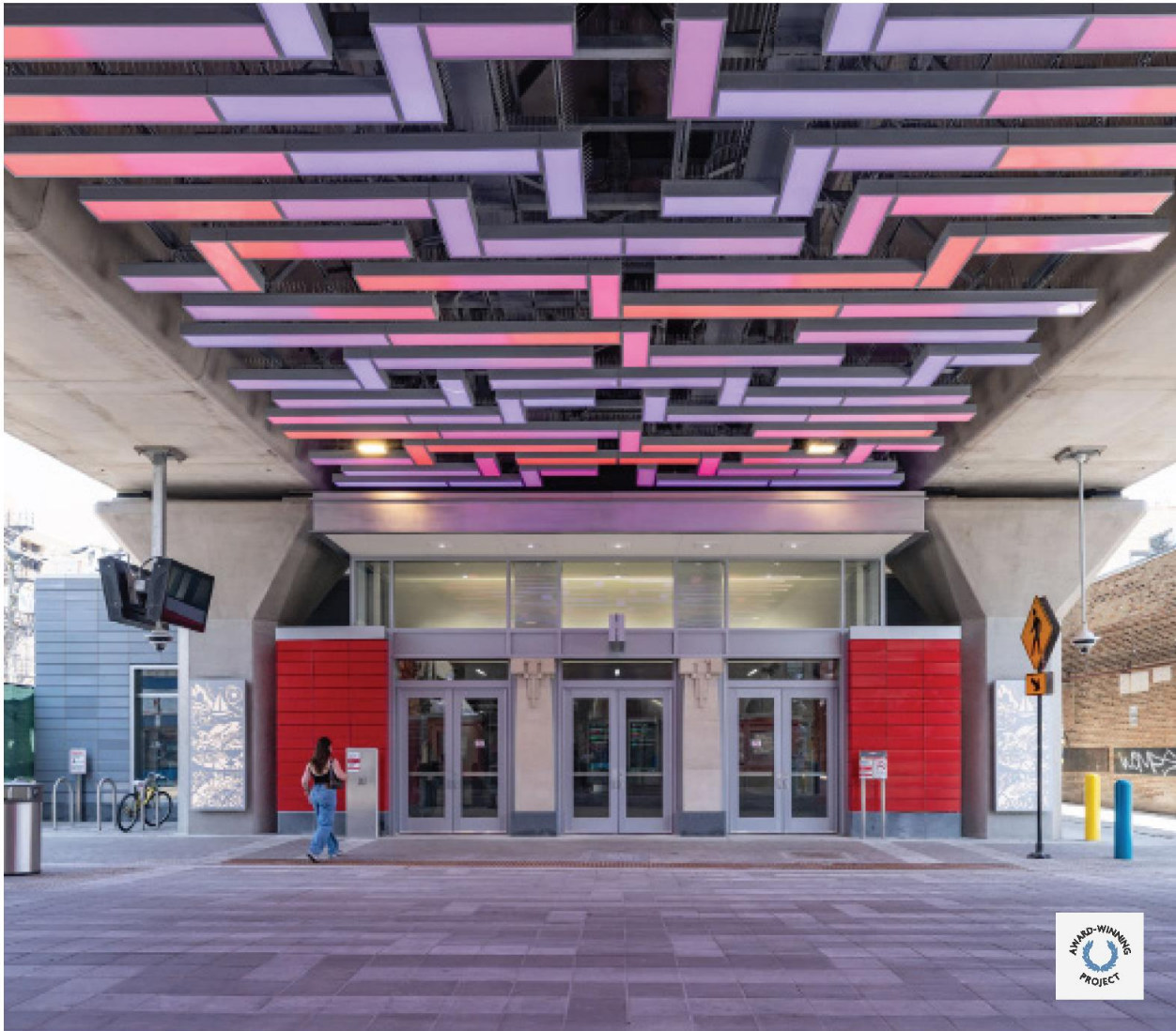
**LARGEST**  
 design/build project in Chicago  
 history and largest project in CTA  
 history

**\$2.9B**  
 construction cost

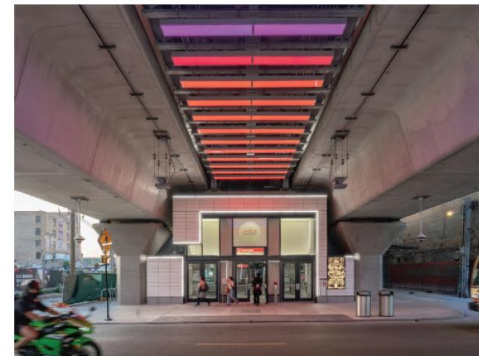
**5.6 MILE**  
 extension of Red Line from 95th  
 Street to 130th Street

**4**  
 new accessible rail stations, each  
 expected to include bus, bike,  
 pedestrian and parking facilities

**EXP SCOPE**  
 part of Walsh-VINCI Transit  
 Community Partners design/build  
 team, including Walsh Construction,  
 VINICI Construction, EXP, SYSTRA and  
 other subcontractors



Images © James Steinkamp Photography



Images 1 + 2 © James Steinkamp Photography;  
Image 3 © Dave Burk Photography



**Chicago Transit Authority (CTA)  
Red-Purple Modernization Program**  
Chicago, IL, USA

*Role: Architecture, interior design, signage + wayfinding, structural, civil, mechanical, electrical, plumbing, fire protection, lighting design, technology design*

**\$2.1B**  
design/build project - 2nd largest capital improvement in CTA history

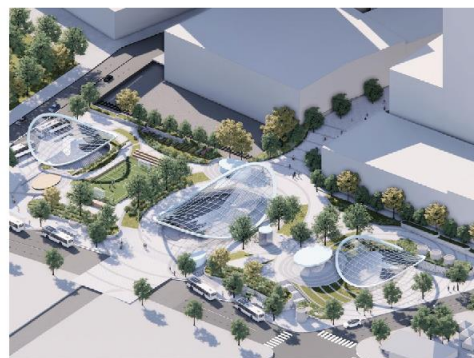
**4**  
new stations designed with award-winning design of 2 temp stations

**5.1 KM**  
signal system upgrades

**1.9 MILES**  
elevated new tracks, reconstructed bridges, support structures

**COMMS DESIGN**  
for stations and one relay house - structured cabling, public address, digital signage, access control, video surveillance, SCADA

**1850 FT / 563 M**  
flyover bridge structure (grade separated) - reaches 46 ft at highest point. Enables up to 8 additional trains, carrying 30% (7,200) more riders per hour during rush periods.



**Five Points Station Transformation**  
Metropolitan Atlanta Rapid Transit  
Authority (MARTA)  
Atlanta, GA, USA

*Role: Civil, structural*

**8**  
new bus bays installed

**CANOPY DESIGN**  
structural engineering services provided

**BUSIEST**  
MARTA station + central transfer point  
between all rail lines

**RENOVATION**  
of East-West + North-South platform levels

**\$230M**  
construction cost

**ADA**  
improvements

**INTERMODAL**  
station connecting rail + city/suburban/  
regional buses



**PowerON Queensway Bus Garage Electrification**  
PowerON Energy Solutions | Toronto Transit Commission  
Toronto, ON, Canada  
*Role: Architect of Record, Engineer of Record*

**BEB**  
battery electric bus charging infrastructure

**DESIGN-BID-BUILD**  
EXP scope includes: architecture, structural, MEP, Comms, Civil, Geotechnical

**120**  
bus bays

**BUS GARAGE CONVERSION**

- Fire protection upgrades
- New electrical service
- Structural upgrades

Images courtesy of PowerON



**New York MTA Rockaway Line  
Resiliency + Rehabilitation**  
New York, NY, USA

*Role: architecture, mechanical, civil, structural, traction power + electrical, drainage, flood control, signals, utilities, communications*

**LEAD DESIGNER**

to Schiavone design/build team providing

**\$392M**

commuter rail

**DESIGN/BUILD**

delivery

**NEW SIGNAL HOUSE**

wayside building

**SYSTEMS DESIGN**

for traction power, communications and signals

**KEY PROJECT FEATURES**

- Viaduct repairs
- Station and signal tower upgrades
- Resiliency and flood mitigation
- New signal tower and track crossover
- South Channel swing bridge

*EXP Services P.C. delivers professional engineering services in New York*



**MTA C&D Design-Build Services for  
the Replacement of 21 Escalators in  
Various Locations**

New York, NY, USA

*Role: engineering*

**LEAD DESIGNER**

to Skanska design/build team

**\$146M**

project across Manhattan, Brooklyn  
and Queens

**MODERNIZATION**

of New York's transit infrastructure to  
meet evolving needs of commuters

**REPLACEMENT**

of 21 escalators and equipment in  
escalator machine rooms

**SAFETY**

and efficiency enhancements

**ADA REQUIREMENTS**

met throughout project construction  
via installation of temporary stair  
handrails and guardrails

*EXP Services P.C. delivers professional  
engineering services in New York*



Image courtesy of Amtrak



### Sunnyside Yard Industrial Yard

Amtrak  
New York, NY, USA

*Role: Industrial engineering, stray current, grounding*

### DESIGN/BUILD

delivery

### 2-TRACK

maintenance + inspection facility

### 6

new service + cleaning tracks with canopy coverage

### \$770M

construction cost

*EXP Services P.C. delivers professional engineering services in New York*

**Station Improvement Program**

Miami-Dade County DTPW  
Miami, FL, USA

*Role: Facility condition assessments, MEP building systems, HVAC systems, lighting systems, vertical transportation*

**COMPREHENSIVE**

transit facility condition assessments

**23**

Metrorail stations

**21**

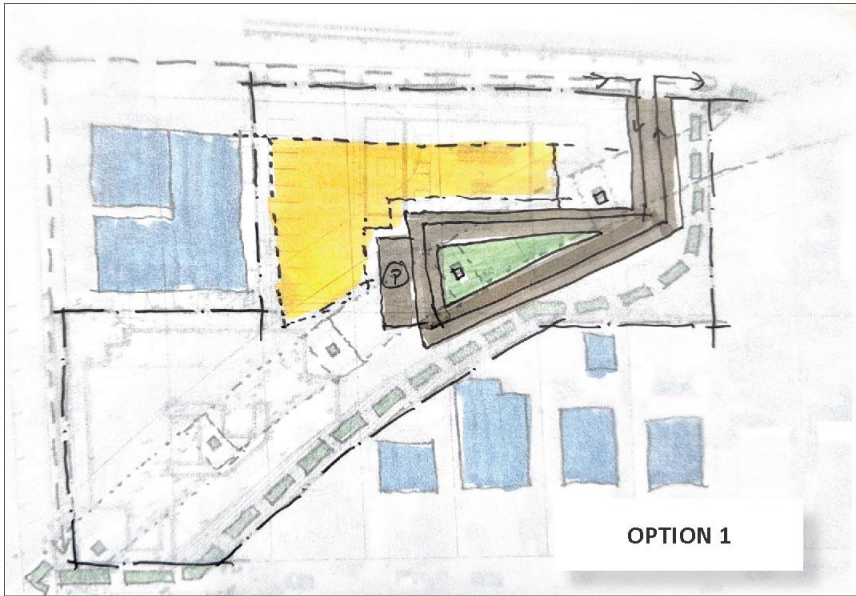
Metromover stations

**SUSTAINABILITY**

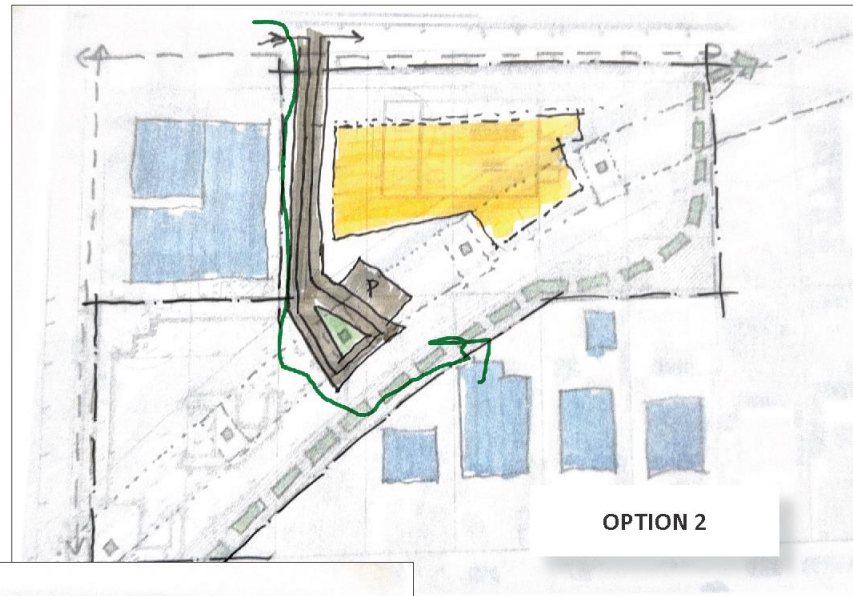
+ resilience strategies for long-term modernization

**IDENTIFICATION**

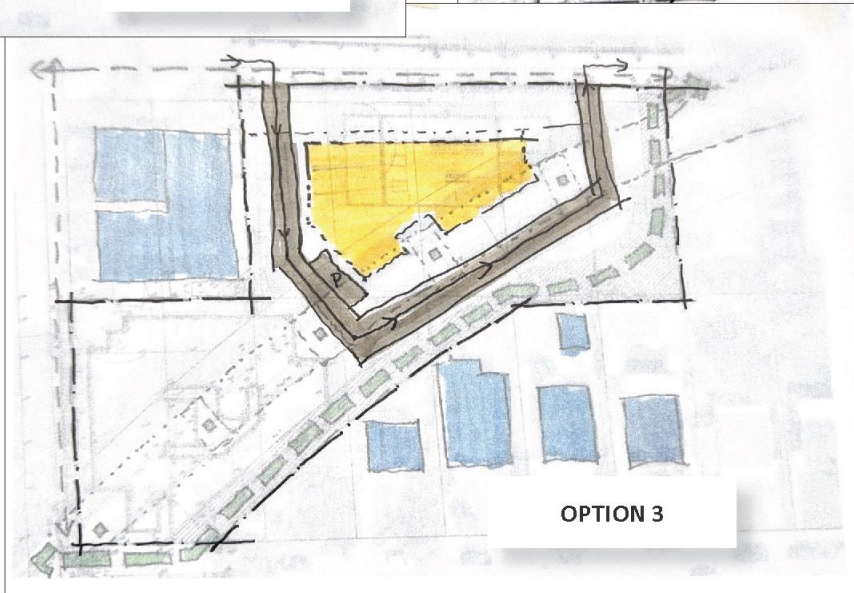
of deficiencies + prioritized upgrades



OPTION 1



OPTION 2



OPTION 3



**Tri-Rail Power Substation**  
Miami-Dade County DTPW  
Miami, FL, USA

*Role: Architecture, mechanical, electrical, plumbing, fire protection, communication systems, sustainability*

**TRACTION**

power substation

**RAIL**

power infrastructure expertise

**ACTIVE**

transit environment

**\$25M**

construction cost

# BLUE GRASS AIRPORT | LEXINGTON, KY

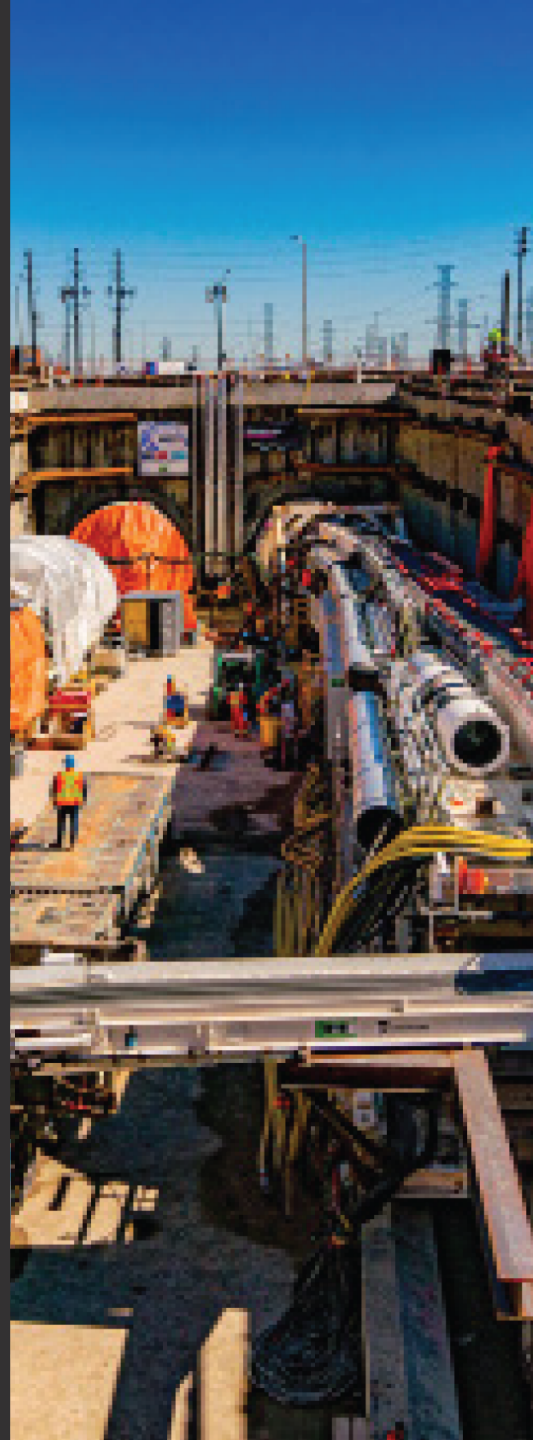
## PARKING GARAGE CONCEPTUAL DESIGN

---



# GEOTECHNICAL CAPABILITIES

- Site Reconnaissance
- Work Plan
- Field Exploration
  - Standard Penetration Test (SPT)
  - In-Situ Testing
  - Rock Coring
  - Groundwater Monitoring
- Laboratory Soil and Rock Testing
- Geotechnical Engineering Analyses
  - Shallow Foundations
  - Reinforced Concrete Mat Foundation
  - Intermediate Foundations
    - Geopiers
    - Rapid Impact Compaction (RIC)
  - Deep Foundations
- Pavement Design
- Geo-structural Design
- Tunnelling and trenchless Design



## AREAS OF EXPERTISE



TRANSPORTATION



WATER + WASTE  
CONVEYANCE



UTILITY



MINING



ENERGY

## SERVICES

### PROGRAM/PROJECT MANAGEMENT

- Procurement (CMAR/IPD)
- Life-cycle cost analysis
- Asset management

### DESIGN + ENGINEERING

- Concept, planning + feasibility
- Detail + reference designs
- Tunnel lining design
- Geostructural modeling
- 3D modeling/rendering
- Seismic analysis/design
- Deep excavation + shoring systems

### INFRASTRUCTURE OPTIMIZATION + REHABILITATION

- Value engineering + alternatives
- Tunnel/trenchless rehabilitation
- Ground improvement
- Tunnel waterproofing

### ASSESSMENT, MONITORING + RESILIENCY

- Geotechnical + hydrogeological + geoenvironmental
- Inspection + condition assessment
- Structural health monitoring
- Geostructural instrumentation + monitoring
- Underground risk management
- Peer reviews
- Climate change adaptation + resiliency

### CONSTRUCTION MANAGEMENT

- Construction engineering + inspection
- Constructability reviews
- Cost estimating
- Materials testing + inspection
- Claims

# INSTRUMENTATION + HEALTH MONITORING

- Several types of geotechnical instrumentation can be used to assess ground water, soil and rock behavior during construction and post construction. Typical instrumentation consists of:
  - Observation Wells
  - Borehole Extensometers
  - Inclinometers
  - Convergence (measuring deformation of ground or structures)
  - Strain Gauges on Struts
  - Surface Settlement Markers
  - Subsurface Settlement Markers
  - Building Monitoring Points
  - Tiltmeters
  - Crack Gauges



**Davenport Diamond**  
Toronto, ON, Canada

*Role: Environmental, geotechnical, mechanical, electrical, IT / security, rail track design, non-bridge structural engineering*

## STRUCTURAL ASSESSMENT

of the existing Toronto Transit Commission tunnels for the additional loads



**Segment 2 - Eglinton Crosstown Light Rail Transit Tunnels**

Toronto, ON, Canada

*Role: Structural, geotechnical*

**2,000+**

geotechnical instruments installed and monitored during the construction

QUESTIONS?

EXPONENTIAL POSSIBILITIES.

exp.com



# Introducing:



[www.urbanengineers.com](http://www.urbanengineers.com)

Washington Metropolitan Area Transit Authority



# Meet the Primes Thank you for Joining

---

2026



---

# MEET OUR TEAM



**Rick Baus, CCM, CPE, CPCE, CCE**  
Associate Vice President /  
Estimating Team Leader  
rvbaus@urbanengineers.com



**David Rochelle**  
Project Manager  
dprochelle@urbanengineers.com

# INTRODUCTION TO URBAN ENGINEERS

---

- Multidisciplinary Firm
- Regional Presence
- Extensive Transit Agency Experience
- Decades of FTA Experience
- **Over \$1 Billion in Rail/Transit Projects Delivered**
- DBE Partnering Commitment



# CORPORATE COMMITMENT

---

**Mission: To Be Our Clients' First Choice**

- Dedicated to WMATA
- Proven Transit Expertise
- Champion of DBE Growth

# DBE PARTNER COMMITMENT

---

**Supporting DBE Firms is Crucial to Urban's Principles, Peers, and Industry.**

- Meaningful Contracting Opportunities
- Mentorship & Growth
- Active Collaboration
- Networking & Relationship Development
- Access to Resources

**Urban Provided More Than \$6.5 Million to DBE Firms in 2025**

# EXAMPLE RELATIONSHIPS

---

**A.D. MARBLE**  
environmental · cultural · engineering



"I applaud Urban for supporting Talson as we grow and giving us opportunities on new projects."

**Robert Bright**  
**Founder & President**



# URBAN SERVICES

---

- Design
- Construction Management & Inspection
- Construction Support
- Project/Program Management
- Project Management Oversight
- Planning
- Environmental



# PARTNERSHIP OPPORTUNITIES



**Surveying**



**H&H**



**Estimating**



**Geotechnical**



**Pavement Design**



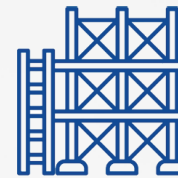
**Architecture**



**Environmental**



**Utilities**



**Structural**



**Construction**



**Scheduling**



**Value Engineering**

# DELIVERING SOLUTIONS FOR OUR PARTNERS

---

## Partnership Focus

“Our accurate, proactive, & collaborative estimating helps WMATA & can help DBEs position bids competitively, avoid surprises, & deliver with confidence.”

- **Accuracy Advantage** – ROM estimates more precise than design firms → realistic budgets
- **Proactive Delivery** – On-time, proactive even with missing info → projects stayed on track
- **Trusted Advisors** – Go-to for constructability & scope clarity → stronger outcomes

# DELIVERING SOLUTIONS FOR WMATA

---

## WMATA Results

Overall Rating:

Exceeds Expectations (Zero Improvement Comments)

Met Expectations:

Timeliness | Budget | Schedule | PM Skills | Coordination

Exceeded Expectations:

Quality | Constructability | Staff | Technical Expertise | Responsiveness

**“This is the same reliability and collaboration you can expect as a DBE partner with Urban Engineers.”**

# CURRENT TASK ORDER ASSIGNMENTS

---

- [FQ2024 PM/CM Contract](#)

**Urban/Hatch Joint Venture**

**Task Order FARE-0010 – Automatic Fare Collection (AFC) Engineering Support**

Period of Performance: 730 Days

DBE Performance: 24%

Contract Value: \$5.1 million

- [FQ2024 PM/CM Contract](#)

**Urban is a Subcontractor**

**Task Order PESC-0003 – Infrastructure Construction Estimating Support**

Period of Performance: 584 Days (Thru 02/27)

Contract Value: \$990,000

# URBAN + HATCH

---

## **Joint Venture for WMATA PM/CM Contract**

- Buildings & Facilities
- Power Systems
- Signaling

## **Collaboration on WMATA GAEC Contract**

- Communications
- Power Systems
- Signaling

**Seeking DBEs to assist with PM/CM and GAEC  
Task Order Positions**

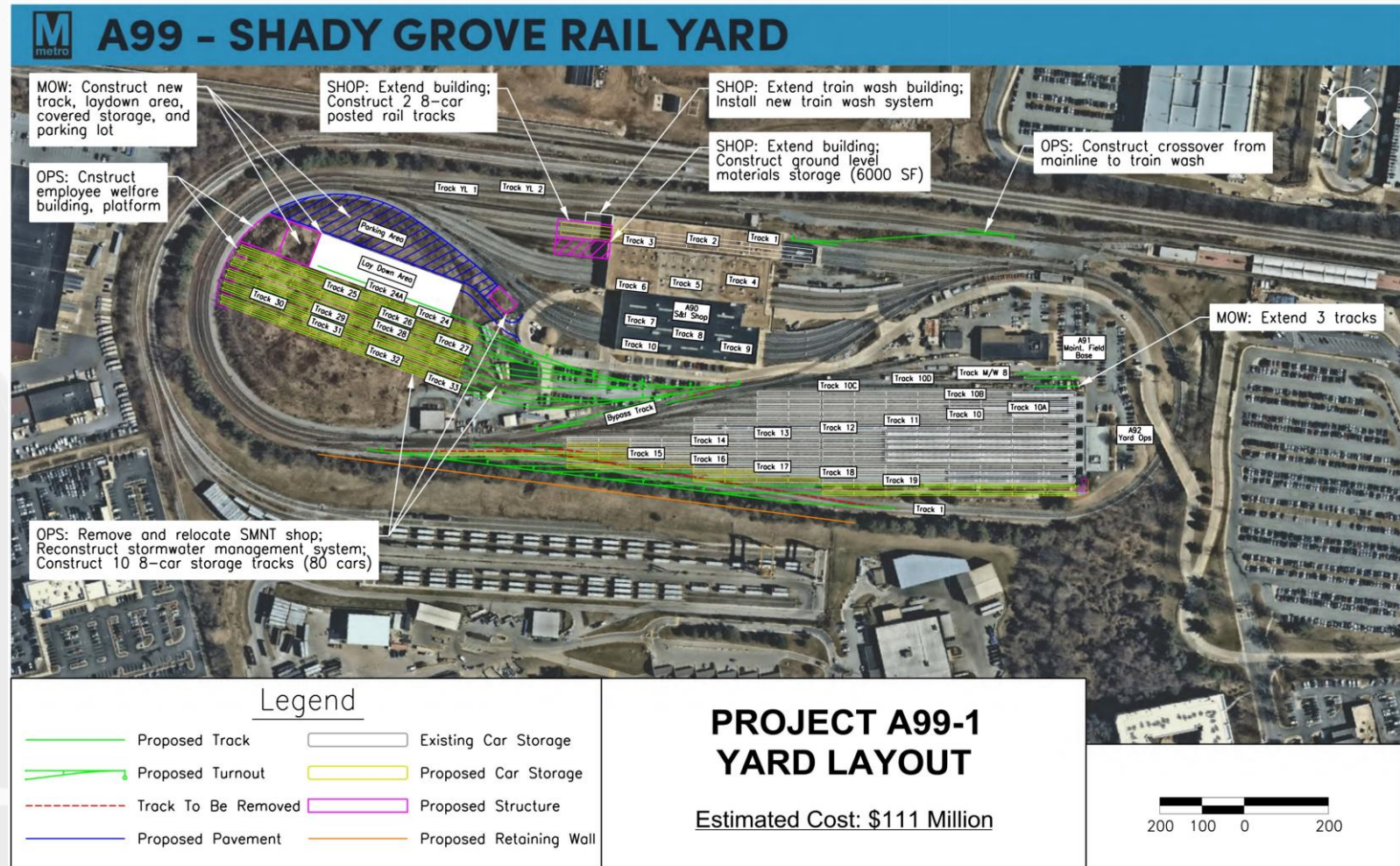
# RAIL/TRANSIT OPPORTUNITIES



# WMATA PROJECT EXPERIENCE

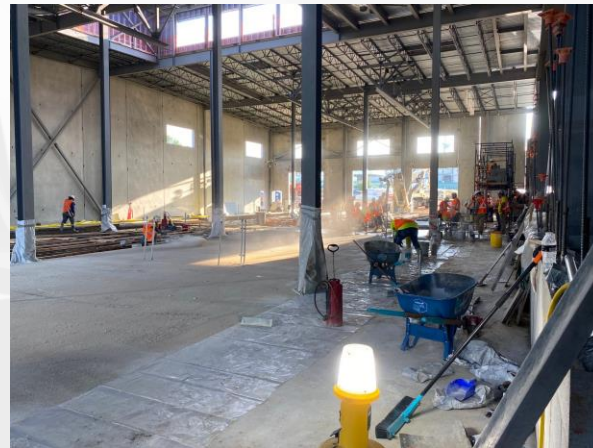
## WMATA System Wide Planning

Urban, as a sub, provided analysis, evaluation, & conceptual designs for modifications & operating improvements at 10 of WMATA's shops & yards.



# WMATA PROJECT EXPERIENCE

## CM on the Bladensburg/Shepherds Parkway Bus Facility



Questions?  
THANK YOU





**Thank You!**

Washington Metropolitan Area Transit Authority