

WASHINGTON METROPOLITAN AREA TRANSIT AUTHORITY

Capital Improvement Program Progress Report

FY2026 Q1



Metro's Capital Improvement Program

Metro's FY26-FY2031 Capital Improvement Program (CIP) totals \$10.9 billion* with funding from the federal government, state and local contributions, and other sources. Metro's FY26 capital budget was approved by the Board of Directors on April 10, 2025, for a total authorized expense budget of \$2.12 billion.*

The six-year CIP focuses on safety, security, state of good repair, and reliability of Metrorail, Metrobus, and MetroAccess and the facilities, infrastructure and systems that support our transit network. The plan also includes targeted investments to drive operating efficiency and improvements that will support service reliability, sustainability, and the customer experience.

Metro's capital program is grouped into six major Investment Categories: Railcar and Railcar Facilities; Rail Systems; Track and Structures Rehabilitation; Stations and Passenger Facilities; Bus, Bus Facilities, and Paratransit; and Business and Operations Support.

Reporting Requirements

The Capital Funding Agreement (CFA) and each of the Dedicated Funding (DF) agreements require Metro to report quarterly on progress in use of funding for capital investments. This Capital Improvement Progress report provides information consistent with the requirements of those agreements.

This report includes a narrative summary of capital investment highlights through the most recent quarter and financial tables detailing capital expenditures, jurisdictional contributions, fund sources aligned to capital projects, changes to the current year capital budget, capital procurement awards and modifications, and the status of projects and programs. As this is an interim progress report, all figures are preliminary and subject to change.

Capital Funding Agreement

The CFA between WMATA, the District of Columbia, the State of Maryland, Arlington County, Virginia, Fairfax County, Virginia, Loudoun County, Virginia and the Cities of Alexandria, Falls Church, and Fairfax, Virginia establishes the terms and conditions for the receipt, use, and reporting of jurisdictional capital contributions made to support the WMATA Capital Program. The six-year CFA, covering fiscal years 2022 through 2027, was negotiated and approved by the WMATA Board of Directors on April 22, 2021. The current agreement expires June 30, 2027.

Dedicated Funding Agreements

In 2018, the Commonwealth of Virginia, the State of Maryland, and the District of Columbia approved a combined \$500 million in new annual dedicated capital funding for the Washington Metropolitan Area Transit Authority (Metro) to restore its assets to a state of good repair and improve the safety and reliability of the Metro system. Metro has negotiated and signed individual DF agreements with Virginia (May 1, 2019), Maryland (September 26, 2019), and the District of Columbia (October 22, 2020).

**Amounts exclude debt service and revenue loss from capital projects*

TABLE OF CONTENTS

Section	Page
Capital Improvement Program	3
Railcar and Railcar Facilities Investments	4
Rail Systems Investments	6
Track and Structures Rehabilitation Investments	8
Stations and Passenger Facilities Investments	11
Bus, Bus Facilities and Paratransit Investments	14
Business and Operations Support Investments	15
Real Estate Update	16
Federal Awards Update	17
Table 1: Capital Program Financials by Investment Category	20
Table 2: Capital Program Financials and Adjustments by Project	21
Table 3: Source of Funds (Budgeted vs. YTD Actual)	25
Table 4: Capital Program Cash Expenditures by Fund Source	26
Table 5: Receipt and Utilization of Jurisdictional Contributions	32
Table 6: Capital Budget Adjustments	33
Table 7: Procurement Actions	34
Appendix 1: Project Pages	*

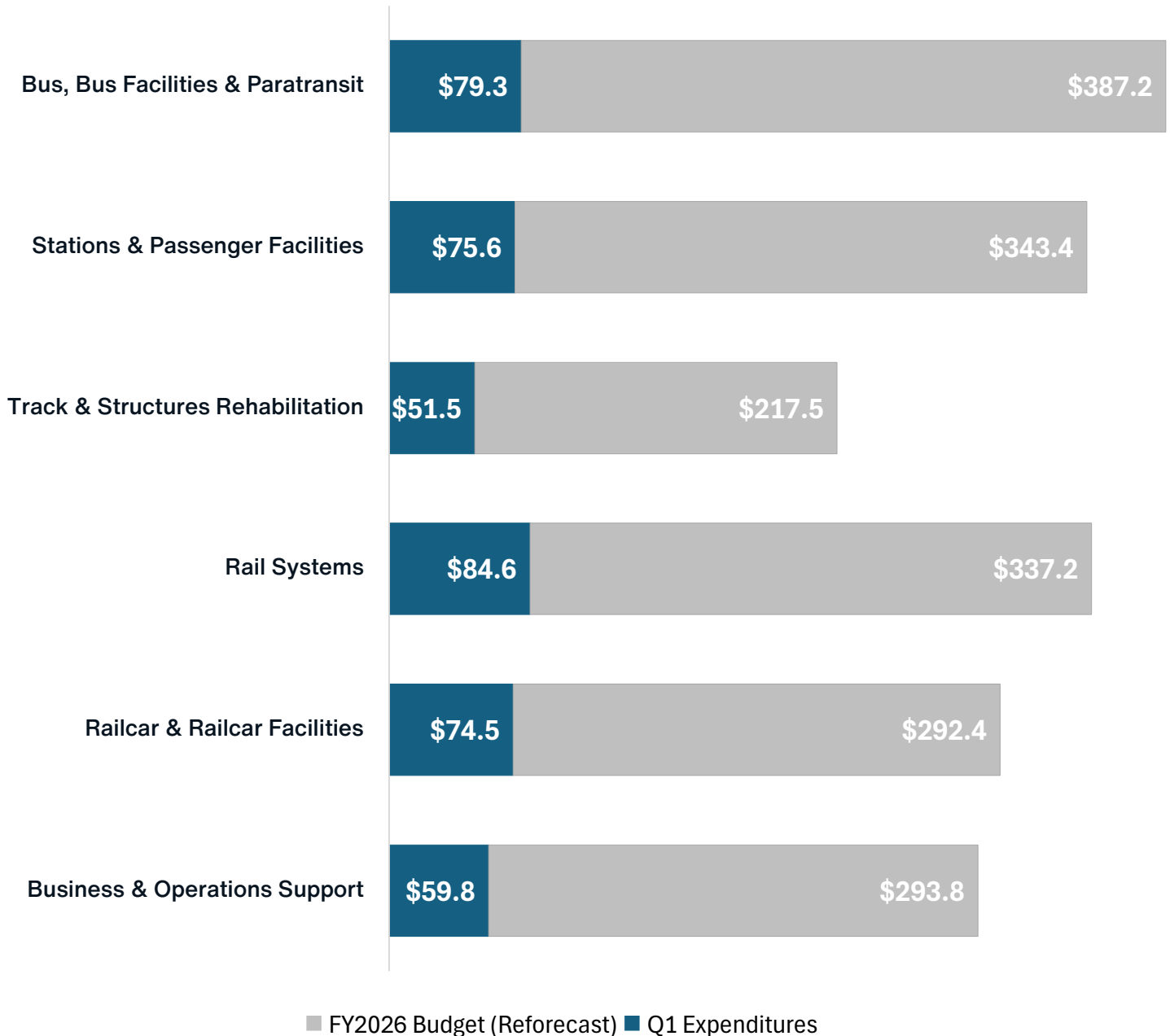
CAPITAL IMPROVEMENT PROGRAM

Metro has invested \$425 million in the Capital Improvement Program through Q1.

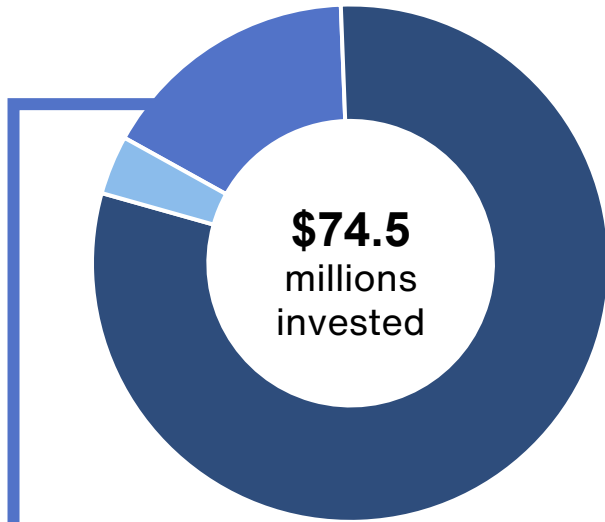
The fiscal year 2026 Board-approved Capital Budget is \$2.1 billion. During the first quarter (July through September) of fiscal year 2026 Metro invested \$425 million in the Capital Program to provide safe and reliable transit.

Metro is revising the FY2026 Capital Program year-end forecast from \$2.1B to \$1.9B to reflect impacts of cost reductions, schedule changes, and market conditions. Potential capital cost savings in FY2026 will be reinvested into the Capital Program, including any reductions in preventive maintenance transfers.

Q1 FY2026 Expenditures (\$M)



RAILCAR AND RAILCAR FACILITIES



Acquisition – \$12.1M

8K Series Railcar Program Advances Design with Supplier Partners

Metro's 8K Railcar Program, advanced through another critical stage in Q1 FY2026, as design qualification, system integration, and feature enhancements continued in close coordination with Hitachi and supplier partners.

The Carbody Design Qualification Testing remains underway, Metro's engineering teams participated in Final Design Reviews (FDR) and system validation workshops in a series of international site visits to Italy and Canada.

Within WMATA facilities, workshops of Train-to-Wayside Data Transfer (TWDT) and Cybersecurity workshops are hosted to strengthen alignment on safety, interoperability, and securing system architecture.

The program moves through design refinement with several contract modifications approved. The contract modifications include:

- introducing 5G communications for live diagnostic monitoring,
- enhanced CCTV coverage,
- ADA door indicators, and
- refined passenger compartment features informed by customer feedback from the Fleet of the Future Expo

Within the program, the 2K/3K Series Railcar Removal Program achieved full completion ahead of schedule. The final 28 units were removed in Q1 FY2026, bringing the total to all 72 planned railcars retired. Two cars will be preserved for historical display and two retained temporarily for revenue collection until 3000-Series upgrades are complete.

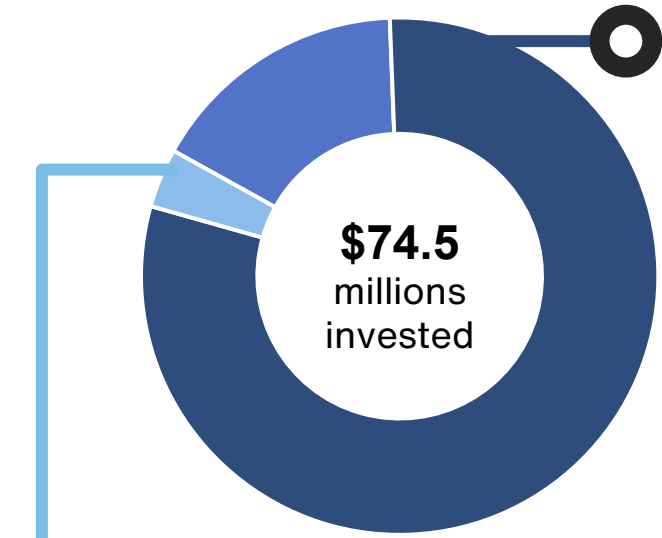


Pictured: The mockup of the 8000-series railcar on the national mall as part of the 'Fleet of the Future' event for the public.

7K Series Program Prioritizes Initiatives for Fleet Reliability, Cybersecurity, and Safety Enhancements

As all 7000-Series railcars have been fully acquired, the Program's current priority is the administration and enforcement of railcar warranty provisions. In Q1, all milestone payments for the fleet warranty program are completed and closed except for Option 5, which remains pending final documentation.

For cybersecurity, the program's software conceptual design is near completion. Hardware implementation remains in progress. The planned Network Video Recorder (NVR) upgrade was formally canceled following an internal review and risk assessment. Alternative strategies for video data management are currently being evaluated as part of Metro's digital modernization initiatives.



Maintenance & Overhaul – \$59.5M

Railcar Scheduled Maintenance Program Ensures System Reliability and Extends Fleet Longevity

During the first quarter of FY2026, Metro advanced scheduled maintenance and overhaul activities across multiple railcar series. Ongoing production for both the 7000 Series Scheduled Maintenance Program (SMP) and Wheelset Replacement Program (WRP) remained steady, while maintenance work on the 3000 Series SMP also progressed according to plan. The transition to FY2026 included preparations for expanded HVAC servicing, with a vendor selected and kickoff meeting scheduled for later in the quarter to initiate the new contract phase.

Maintenance Facilities – \$2.7M

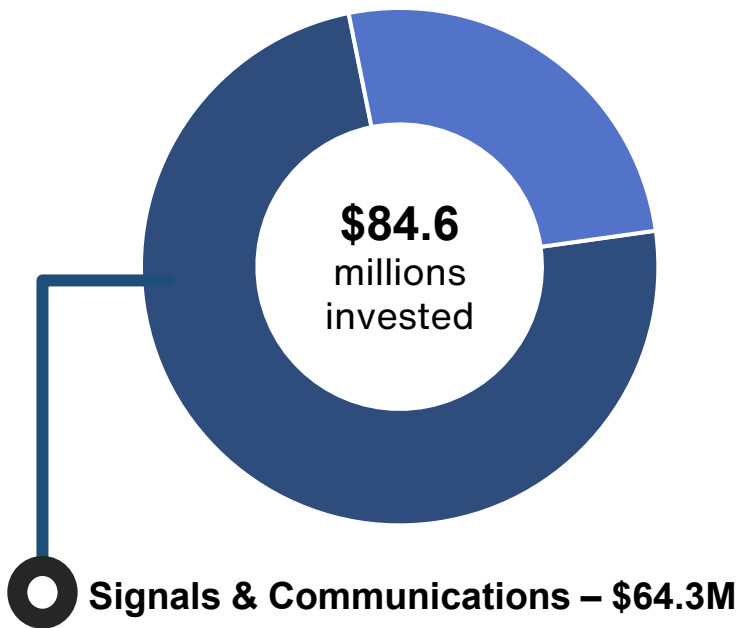
Railyard facility improvement efforts optimize storage, HVAC installations, and early-stage design work to support future construction activities

At New Carrollton, the Storage Optimization Project advanced with the development of conceptual drawings, and submission of a technical memorandum for review covering five proposed alternatives. Site survey processing continues to inform the upcoming design milestone.

Sheriff Road’s Heating, Ventilation, and Air Conditioning (HVAC) Outfitting remains in the final punch list and closeout, while the Greenbelt HVAC Replacement advanced with full installation of ductwork and ceiling cassette units. Electrical work in the mechanical room was completed, and megger testing confirmed system readiness ahead of switchgear commissioning.

At New Carrollton’s Car Track Equipment Maintenance Shop, construction of the new concrete apron at Building B was finalized, improving access and drainage in the maintenance area.





Automatic Train Control State of Good Repair Program Replaces aging signaling systems, Train Control Room infrastructure, and wayside equipment

Field work progressed steadily during Q1 FY2026. The Automatic Train Operation (ATO) system has remained fully operational across all rail lines since June 15, 2025. The project team continues to conduct active performance monitoring and issue resolution, submitting weekly updates to the Washington Metrorail Safety Commission (WMSC) and developing final deliverables required for WMSC concurrence.

For the Train Control Room Renewal program, work is focused on installing bonds, speed loops, track circuit modules, remote terminal units (RTUs), and MERCS. The final lighting installations are scheduled for November 2025, after which the contractor will begin operating three shifts to accelerate the remaining Automatic Train Protection (ATP) module installations and complete all integration work.

Under the Switch Machine, Cable, and Bond Replacements program, fieldwork advanced steadily throughout the quarter. The team completed 7 switch machine replacements, 7 cable replacements (including cross-bond and multi-conductor types), and 6 high-current bond replacements, along with the delivery and acceptance of 6 new bonds.

Cable meggering and insulation testing were performed at three priority locations to verify system reliability and mitigate potential points of failure.

The Fiber Optic Program advanced installation and testing across multiple operating sectors

In Q1, crews installed 203,600 linear feet of radio fiber, along with 30,000 feet of three-way microduct piping, 25,300 splices, and 20 Metro box enclosures, advancing the expansion of Metro's communications infrastructure.

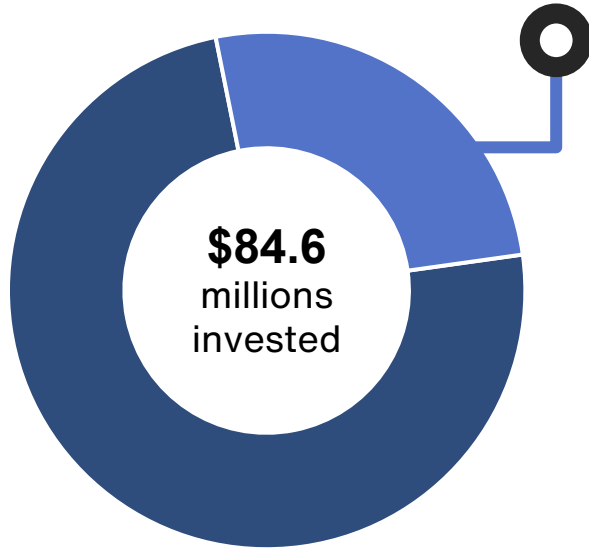
OPS4 radio circuits testing was nearly complete, with 16 of 17 circuits finalized, and Radio Circuit Package (RCP) testing for Fairfax and Alexandria concluded. Testing for OPS1 and OPS2 continues, reinforcing systemwide standardization and reliability improvements.

Additionally, the Green Line summer shutdown allowed critical fiber work to be completed under optimized track access conditions.

The Communication-Based Train Control (CBTC) Program supports systemwide modernization planning

The team prepared a Request for Information (RFI) for suppliers and installers, developed a cost estimate and migration strategy for the Red Line CBTC, and continued coordination on railcar conversion strategy, scheduling, and estimating efforts.

Additional work included ongoing program coordination, marketing and branding development, and refinement of procurement documents for the upcoming RFP to engage CBTC suppliers and installers.



Power – \$20.3M

Systemwide traction power improvements strengthen network reliability and electrical performance across multiple rail segments

Systemwide traction power improvements continued steadily in Q1 FY2026, under Traction Power State of Good Repair program, construction wrapped up at Shady Grove Station, Alexandria Yard, and Twinbrook, while new activity began at Shady Grove Service & Inspection (S&I) and Medical Center traction power substations. Work also advanced at Grosvenor, where field coordination and testing are ongoing. The team finalized and advertised the RFP for the next phase of traction power replacements, incorporating lessons from prior phases to optimizing phasing and system integration.

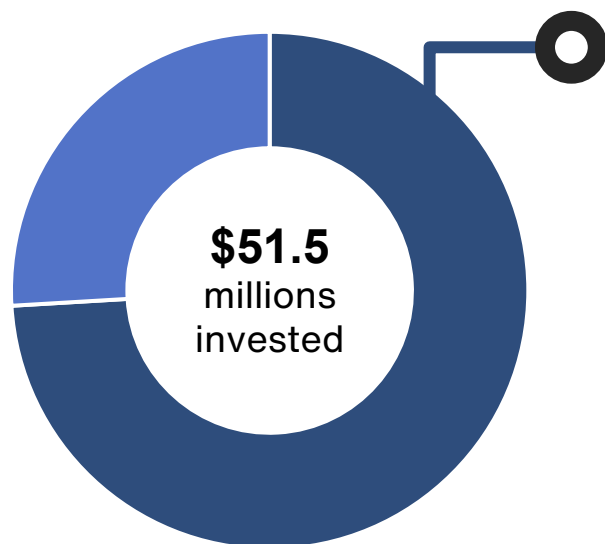
For the Tagging Relay & Supervisory Control and Data Acquisition (SCADA) Upgrades, construction was completed at Foggy Bottom, continued at Seward Square and Metro Center, and commenced at Federal Center, further expanding Metro’s tagging relay and electrical safety enhancements.



Asset	FY2026 Plan	FY2026 Q1	Completion Percentage
SOGR Cable Installations (LF) ¹	36,000	19,465	54%
Cable Meggering	2,000	545	27%
Uninterruptable Power Supply Replacement	14	5	36%

1. LF – Linear Feet; All cable installations (replacements and additions) are included in this line.

TRACK AND STRUCTURES REHABILITATION



Fixed Rail – \$38.1M

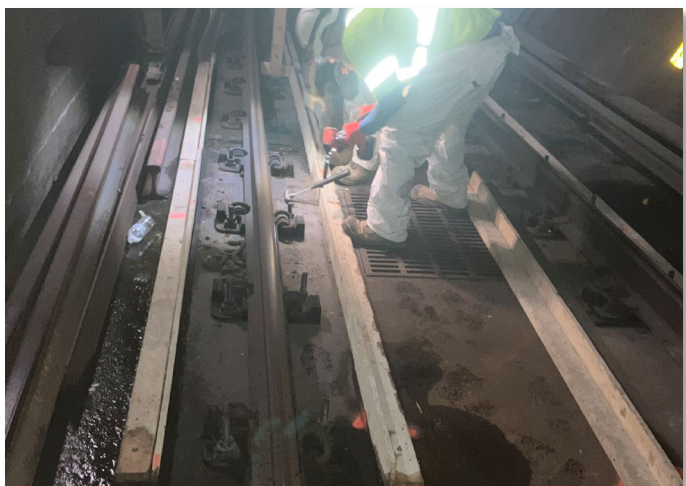
The Track and Structures team advanced critical state-of-good-repair work across all rail lines

During Q1 FY2026, the Track and Structures team advanced critical state-of-good work repair across all rail lines. Major summer shutdowns on the Yellow, Blue, and Green Lines and weekend work on the Red, Blue, Orange, and Silver Lines focused on rail renewal, grout pad rehabilitation, crosstie and fastener replacement, and track surfacing. Preventive maintenance—including leak mitigation, vegetation control, and drain cleaning—also continued to strengthen long-term system reliability.

Material lead times and limited track access continued to influence sequencing, but progress remained steady. Key achievements included over 22,000 linear feet of rail renewal, completion of major grout pad repairs, and replacement of essential fasteners, insulators, and crossties.

Track Frogs Delivered for Installation

In Q1, 16 alternative track frogs were successfully delivered following earlier manufacturing delays. The project team initiated coordination with Track Maintenance to develop an installation schedule, ensuring alignment with system maintenance windows and operational safety protocols.



TRACK AND STRUCTURES REHABILITATION (CONTINUED)

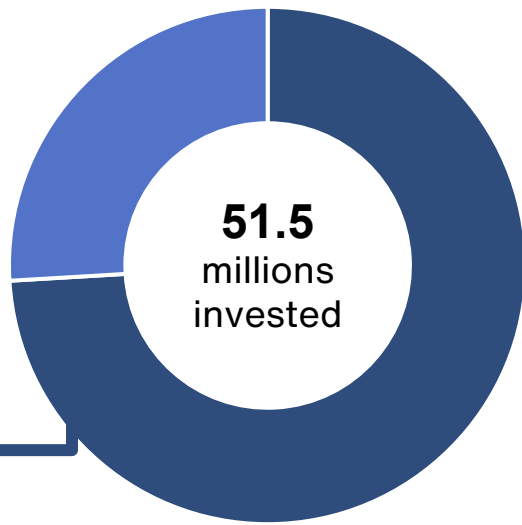
Track Rehabilitation Work by Component Activity

Component Activity	FY26 Plan	Q1 Work	Completion Percentage
Crossties Replaced	5,800	2,561	44%
Third Rail Insulator Replacement	3,100	1,284	41%
Joint Elimination	550	231	42%
Running Rail Renewal	53,040	22,289	42%
Third Rail Rehabilitation	7,200	52	1%
Track Fasteners Replaced	8,000	2,639	33%
Track Surfacing	100,000	28,480	28%

Structures Rehabilitation Work by Component Activity

Component Activity	FY26 Plan	Q1 Work	Completion Percentage
Concrete Restoration (LF)	1,580	155	10%
Deck Joint Replacement (LF)	230	-	0%
Drain Rodding (LF)	80,000	20,790	26%
Grout Pad Rehabilitation (LF)	8,800	1,949	22%
Leak Mitigation	1,540	14	1%
Track Bed Cleaning (LF)	350,000	51,162	15%
Track Signage Replaced	700	334	48%

TRACK AND STRUCTURES REHABILITATION (CONTINUED)



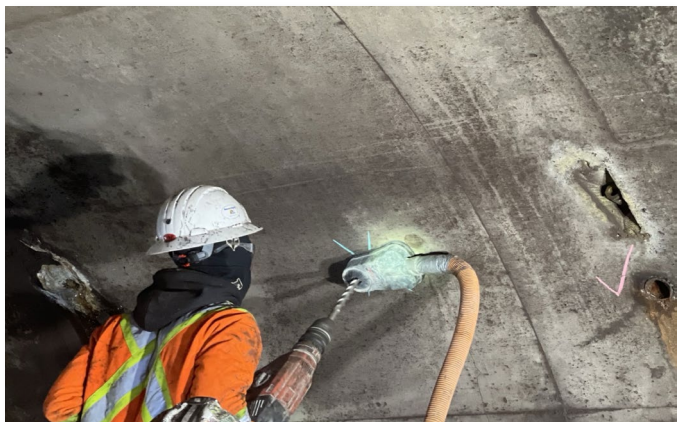
Structures – \$13.4M

Tunnel Water Leak Mitigation Work Reduces Infiltration and Improves Tunnel Reliability

In FY2026 Q1, the Tunnel Water Leak Mitigation program advanced through coordinated weekend and weekday work efforts aimed at reducing infiltration and improving tunnel reliability across the A and B Lines.

Following the completion of all pre-Substantial Completion Inspection (SCI) work in Q4, the A Line continues in its monitoring phase.

On the B Line, active drilling and grouting continued along Tracks 1 and 2 during non-revenue hours. To accommodate this expanded effort, the contract end date was extended from November 1, 2025, to June 30, 2026.



A total of seven Weekend Single Track (WST) and seven Weekday Early Out (WEO) Revenue Service Adjustment (RSA) events are planned to complete the remaining scope.

Shaft Structural Rehabilitation Program Advances Design Work

In Q1, design work advanced across all project locations. Final (100%) design submissions for shafts FA11 and FB8 were reviewed and approved, while FA5 and FA13 reached 90% design approval and are progressing toward finalization. Design development for FA7 and FG2 achieved 60% completion and received approval for continued work.

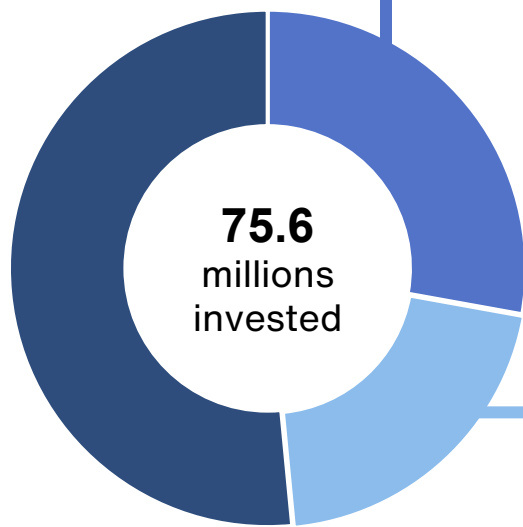
The site office setup, Maintenance of Traffic (MOT) controls, and noise monitoring systems were established to support upcoming demolition and construction phases. The scope of work for lead-based paint abatement was finalized among all parties, and the related change order is in closeout.

Track Structure Improvement Projects Following Vendor Onboarding

During Q1 FY2026, the project continued advancing Work Planning and Maintenance Improvements (WPMI) dashboards and related maintenance-of-way initiatives aimed at enhancing track access, wrench time, and tool utilization. Following the project's transfer to WPMI, a new vendor was onboarded in mid-September under a Limited Notice to Proceed (LNTP), with final contract negotiations concluded by late September. Current efforts are focused on implementing key priority projects, including:

- Infrastructure Maximo Asset Updates
- Digitization of the Labor Pick Process
- RSA Slide Deck Automation
- Outage Delivery Team Implementation

STATIONS AND PASSENGER FACILITIES



Platforms & Structures – \$21.1M

3 Station Restoration Work Completed

During the Q1 of FY2026, restoration work advanced at several stations under the Station and Facility Restoration Program. Three stations—Rockville, Twinbrook, and East Falls Church—were fully completed, making significant progress toward program goals.

Ongoing restoration work continues at Takoma, Medical Center, and Shaw stations. Tile deliveries, which had previously delayed completion at Morgan Boulevard, resumed in September FY2026, enabling the platform to reach 85% completion. The remaining tile shipments are expected in October 2025 to support full project closeout.

Metrorail Stations Entrance Enhancement Project Near Full Project Delivery

In Q1, installation of the final coiling door—the third and last of its type—was completed, marking a key milestone toward full project delivery. To date, eleven swing gates have been installed, with two remaining in active construction. Four of the seven project stations have reached readiness for Substantial Completion Inspection, reflecting steady progress toward closeout.

Rail Passenger Facility State of Good Repair Work Expansion

For the Sewage Ejector Replacement project, Metro issued the full Notice to Proceed (NTP) in mid-Q1, expanding the limited Q4 authorization to cover all eight project locations across Maryland and Washington, D.C.

Construction activities commenced at Forest Glen and Congress Heights, where the contractor mobilized crews and began disconnecting existing water and sewage lines in preparation for demolition of the old ejector systems. Work sequencing and safety planning were closely coordinated to minimize operational disruptions while ensuring full compliance with environmental and safety standards.

Vertical Transportation – \$15.6M

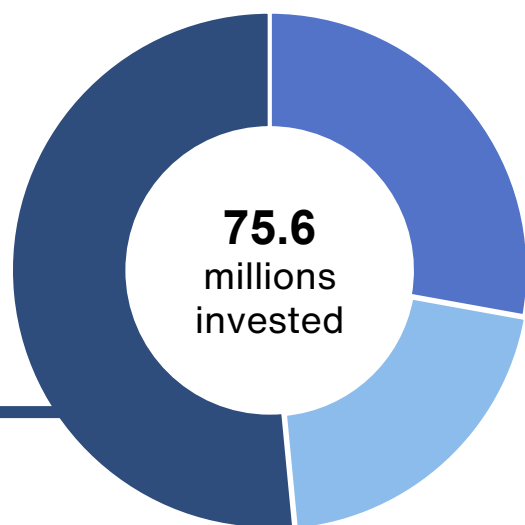
Elevator Rehabilitation Program on Schedule

During Q1, the Elevator Rehabilitation Program completed two units—one each at Dupont Circle and Capitol Heights. Work also commenced on two additional units at Pentagon City and Glenmont, while rehabilitation activities continue at Gallery Place. The program remains on schedule, with crews coordinating inspections and modernization efforts to enhance system reliability and customer accessibility.

Escalator and Elevator Overhaul Program Focuses on Preventive Maintenance

In Q1, the Escalator and Elevator Overhaul Program continued its focus on preventive maintenance, modernization, and infrastructure reliability. A total of 311 work orders were completed, encompassing step chain, handrail, gearbox, and drive chain replacements, as well as welding, and safety-related inspections.

Activity	FY26 Plan	Completed	Q1
Elevators Rehabilitated	9	2	
Escalators Overhauls	0	0	
Escalators Replaced	21	3	



Station Systems – \$39M

Fire Life Safety System Upgrade Work to Plan

In Q1, Metro maintained its fire alarm and life safety systems in a state of good repair across stations and tunnels, while advancing modernization efforts to enhance emergency response capabilities. Planning and initiation activities continued for the Fire Life Safety System Upgrade, which will introduce integrated and automated monitoring across multiple stations. Preliminary development also progressed for Phase 1 of the Emergency Management Platform Replacement Project, focused on Crystal City, Metro Center, and Gallery Place. The procurement package for this initiative is currently in development.

Meanwhile, the Forest Glen Fire Life Safety System Upgrade project advanced into the planning and initiation phase, establishing the foundation for future modernization at this critical station.

Digital Display Improvement Program Modernizes Customer Information Visibility

In Q1, preparations for large-format LED screen installations continued at Mt. Vernon Square, while the Navy Yard installation was deferred to Q3 due to the ongoing escalator entrance closure. The pylon pilot project also advanced, with fabrication and testing underway for delivery in late Q2.

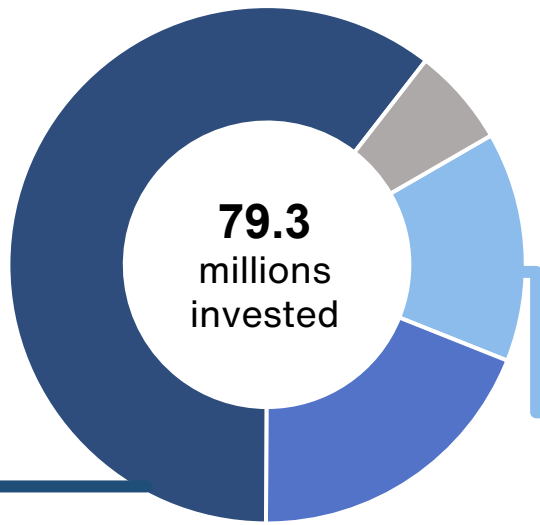
Progress continued on Passenger Information Display (PID) enhancements. Grout pad installations were completed and paid for in September, and new digital screens were installed at Silver Spring and Takoma. Technical evaluations for PID replacements at Grosvenor Station were also completed, with a contract award expected by mid-October.

Facility Security Monitoring Equipment Continues

During Q1 of FY2026, the team continued oversight and coordination of the Body-Worn Camera Project for MTPD Districts 1 and 2, ensuring that closeout milestones remain aligned with operational readiness requirements.

Systemwide, physical security assessments were completed across WMATA storerooms, identifying opportunities to enhance access control, surveillance coverage, and equipment standardization. To strengthen program continuity, an Electronic Safety and Security (ESS) Lead Engineer was onboarded to provide dedicated technical leadership for ongoing modernization efforts.

BUS, BUS FACILITIES AND PARATRANSIT



Maintenance Facilities – \$47.9M

Northern Bus Garage Replacement Project Prepares for Future Fleet Electrification

Construction continued through the quarter with steel erection, metal deck installation, and concrete pours across multiple areas of the garage. Crews also progressed on the installation of bus lift frames, door and window framing, and interior masonry walls, while exterior work advanced on stud framing, sheathing, and air barrier membrane installation.

Flood testing was completed on all roof sections above occupied spaces, and the backup generator was delivered and set in place. Coordination remains ongoing for the battery electric bus (BEB) system implementation, ensuring alignment with project sequencing and facility readiness.

Bladensburg Bus Garage Rehabilitation Reached Construction Milestone

Phase 1 construction for the Maintenance Building reached Substantial Completion in July 2025, and WMATA officially assumed possession of the facility.

Phase 2 construction, focused on the Employee Parking area, began in August 2025. Initial site work included demolition of concrete pavement, completion of construction entrances on 26th and 28th Streets, and installation of erosion and sediment control measures. The project also completed archaeological excavation, disconnected site utilities, and began abatement and waste removal inside the existing structures.

Acquisition – 11.4M

New MetroAccess Vehicles Received

Delivery of new minivans is well underway, with 70 of 181 new minivans received as of Q1 FY2026. These vehicles support Metro’s broader commitment to Service Excellence by enhancing fleet reliability and accessibility across the region.

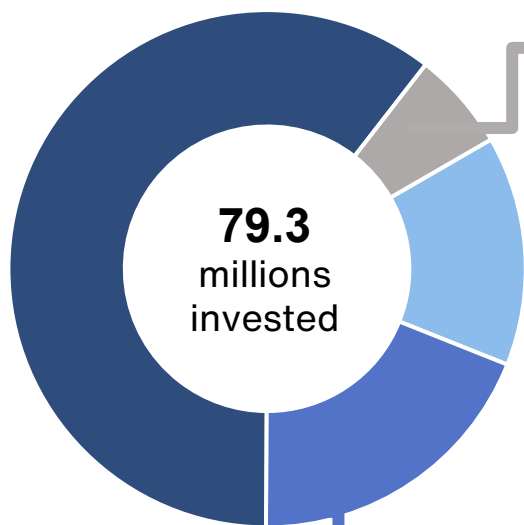
In addition, one NextGen vehicle was received in Q1, completing the remaining balance from the FY2025 procurement. Metro also took delivery of 100 DriveCams and 100 Mobile Data Terminals (MDTs) to further strengthen operator safety, fleet visibility, and data integration capabilities.

Bus Fleet Replacement Program & Zero Emissions Bus Acquisition Underway

In FY2026 Q1, production began on the 75 forty-foot Hybrid Electric Buses (units 26400–26474), with the official start date of September 8, 2025. Additionally, a modification was approved to replace 25 planned 35-foot Battery Electric Buses with 25 forty-foot Hybrid Buses.

Metro also received delivery of its first two of five battery-electric buses from Nova Bus and is preparing to put them into revenue service from the Shepherd Parkway Bus Division along with the existing New Flyer battery-electric fleet.

Bus Type	FY26 Expected Buses	FY26 Delivered
Battery Electric Bus 40-ft	5	2



Maintenance and Overhaul – \$15.1M

Bus Equipment Modernization Accelerates with Upgrades and New Implementations

In Q1, upgrades of the Clever Devices Intelligent Transportation System (Year 2) reached 93% completion, covering IVN 5 installations, new APC units, TCH relocations, and array microphone integrations. The final 22 buses, currently in rehabilitation, will be upgraded upon their return to service in Q2.

Premium Support Services and ITS maintenance continued uninterrupted, entering their third contract year to sustain fleetwide hardware and software performance. Additional modernization initiatives also advanced this quarter, including CleverInsights implementation, RTLS migration, 5-second AVL updates, EVMS integration, Busware-to-CleverWare migration, and the AMM application upgrade - all reinforcing Metro’s commitment to system reliability and operational efficiency in alignment with the Strategic Transformation Plan’s focus on modernization and customer experience.

Asset	FY26 Plan	Q1	Completion Percentage
Bus Rehabilitations	93	24	26%
Engine Assemblies	120	21	18%
Transmission Assemblies	150	40	27%

Passenger Facilities & Systems - \$4.9M

Bus Planning Studies Focus on Cost Modeling, Design Coordination, and Stakeholder Engagement

A dedicated meeting was held with internal and jurisdictional partners to refine the pilot concept for an operator restroom and breakroom facility, ensuring that design and functional requirements align with operational realities and equity principles from the Better Bus Network Redesign.

Preliminary Rough Order of Magnitude (ROM) cost estimates were completed for all five candidate layover sites, incorporating updated bus blocking and schedule data. This refined analysis informed more accurate projections for bus parking demand and operator utilization.

Clear Lanes Enforcement Tools Expanded and Regional Coordination Continues

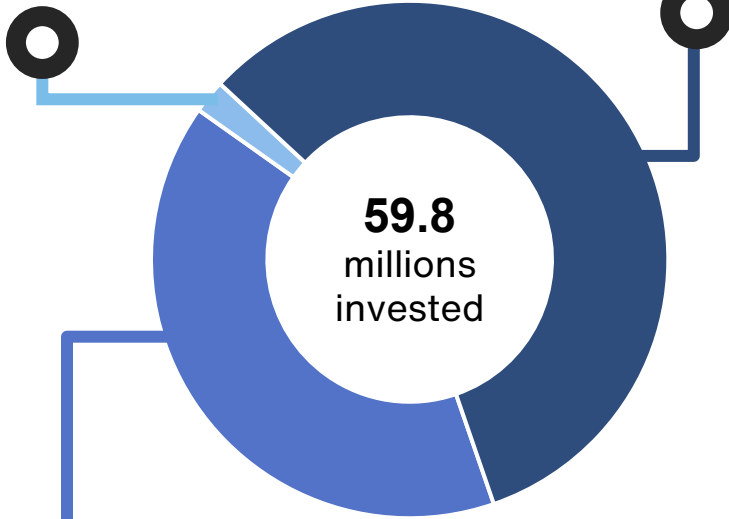
Metro refined and expanded its automated enforcement tools to align with the Better Bus Network Redesign. The team completed a full re-survey of bus stops within the Clear Lanes system, updating routes and data to improve accuracy. A continuous improvement program was launched in partnership with DDOT and the system vendor, introducing revised workflows for on-bus and back-end updates, a 24-month corrective action plan to reduce ticket rejections, and updated key performance indicators.

Coordination also advanced with Montgomery County to extend Clear Lanes enforcement along Georgia Avenue and University Boulevard, reinforcing regional consistency in priority bus corridors.

For Next Generation Transit Signal Priority (TSP), engagement continued across WMATA departments and jurisdictional partners to refine technical and operational requirements. The Concept of Operations document was further revised based on stakeholder feedback, while scope development began for the upcoming RFP to secure a technology vendor.

Advanced coordination on several high-priority corridors, including Georgia Avenue (DC) and Wisconsin Avenue (MD), and regional initiatives such as DMVMoves, Crosstown/East-West BRT, and the RFK redevelopment network. A Project Control Number (PCN) was secured, and a capital-funded staff position was advertised to support the program’s growing scope.

MTPD – \$1.2M



59.8
millions
invested

Information Technology (IT) – \$24.0M

Passenger information Display System Modernization across All Rail Stations

This quarter’s work centered on ensuring that legacy PIDS units operating on older software could continue to integrate seamlessly with the upgraded EclipsX platform. Regular system optimization and troubleshooting remained a priority, supported by ongoing collaboration with SITA, the original software designer.

Equinix Data Center Operations Remained Stable

Following the pause recommended by the Office of the Inspector General (OIG), Metro continued evaluating options for a redundant PowerFlex environment at the Eisenhower Data Center to strengthen system resilience and continuity. A revised Phase 2 scope and project charter are under development to incorporate this recommendation, aligning future infrastructure work with Metro’s Strategic Transformation Plan priorities around digital modernization and operational reliability.

Support Equipment & Services – \$34.6M

Joint Development Program Advances Multiple Transit-Oriented Projects

In Q1, a joint development agreement was executed for the Twinbrook stormwater site, and Metro received Board authorization to enter into an agreement for the Landover project. The second phase of the Grosvenor development also reached closing, clearing the way for construction of a 220-unit senior living building.

Elsewhere, the team reviewed RFP responses for the Capitol Heights joint development opportunity and continued contract negotiations at Deanwood, Forest Glen, and the Deanwood Library sites.

DC and Virginia Office Consolidations Close Out Underway

In DC, administrative closeout activities continued through Q1, focusing on lease negotiations at the Metro Headquarters for two retail tenants and coordination of tenant improvement plans scheduled for later in FY26.

All final mechanical, electrical, plumbing, and life safety systems were completed, with final inspections now underway. The Substantial Completion Inspection (SCI) and Certificate of Occupancy are expected in Q2, keeping final completion on track for January 2026.

In Virginia, administrative closeout continued during Q1, focusing on financial reconciliation, project management support, and ongoing integration of MICC functionality.

Planning Studies Underway for DC, Maryland and Virginia

In DC, the Columbia Heights Design and Evaluation (D&E) Station Capacity Study was delivered, marking the completion of consultant work. The final report is under internal review. In Virginia, the Planning team submitted a revised engineering feasibility report and constructability analysis for the Vienna Guaranteed Access project, incorporating feedback from prior reviews to refine design and cost assumptions.

Separately, Metro’s Real Estate and Joint Development team began work on the Takoma Station Transit Requirements Division 01 effort. This activity initiates early-stage coordination for potential joint development opportunities. In Maryland, joint development planning studies continued at Morgan Boulevard, Shady Grove, College Park, Forest Glen, Twinbrook West, Glenmont West, Rockville, Southern, and West Hyattsville. In Virginia, the team advanced site planning and transportation analyses supporting Fairfax County’s Bus Rapid Transit (BRT) initiative at Huntington Station.

REAL ESTATE UPDATE

Metro proactively manages its real estate and parking assets to maximize transit access, stimulate economic development, and generate non-fare revenue and transit ridership through transit-oriented development.

Joint Development

See Metro's 10-Year Strategic Plan for Joint Development [2025 Progress Report](#).

- **Capitol Heights:** Metro interviewed the Joint Development solicitation respondents and continued analysis and clarifications in advance of a developer selection in Q2.
- **Grosvenor-Strathmore:** Metro closed on the second phase of joint development with Fivesquares Development which will include the construction of a 220-unit senior living building.
- **Landover:** Metro received Board authorization to enter into a Joint Development Agreement with Standard Communities for the sale of 2.17-acres to facilitate the development of a 260-unit affordable residential building. As part of the agreement, the developer would construct an emergency vehicle access road that would benefit a future joint development at Landover.
- **Twinbrook:** After receiving Board authorization in 2024, Metro executed a Joint Development Agreement with Hines to facilitate the construction of 437 residential units and 5,000 square feet of retail. The developer will relocate and maintain the displaced stormwater facility and construct a roadway that will support future bus operations.

Incidental Use

- Seventy-three ATMs from First National Bank have been installed in Metro stations. All 122 ATMs are projected to be installed across the system by the end of CY2025. This initiative provides Metro with non-passenger operating revenue.



Pictured: Landover development rendering



Pictured: Grosvenor development rendering

FEDERAL AWARDS UPDATE

Federal Awards Status - Summary

FTA Active Awards

- 18 active awards (8 Formula, 4 Capital PRIIA, 2 OIG PRIIA, 4 Discretionary)

FTA Grant Post Award and New Grant Actions

- All applications for FFY2025 Federal Formula Grants will be entered into FTA's grant management system (TrAMS) by Thanksgiving

Close Outs

- 6 planned by end of calendar year (2 Federal Formula, 2 Federal Capital PRIIA, 1 Federal OIG PRIIA, 1 Federal Discretionary)

Other Active Awards

- 3 DHS/FEMA Transit Security Grant Program (TSGP) awards (includes recently awarded TSGP 2025 grant) and 1 USDOT Office of the Secretary SMART Grant
- Awarded 2 Northern Virginia Transportation Commission (NVTC) Commuter Choice grants for operating assistance in the Virginia I-395 corridor

Discretionary programs

- Awaiting selection announcements for USDOT Regional Infrastructure Accelerator Program and FTA Low/No Emission Program
- Working with Fairfax County on their involvement with \$104M Low/No Grant

FEDERAL AWARDS UPDATE

FTA Awards Status – Details

Federal Award ID	Application Name	PoP End Date	Federal Award	Drawn	Balance
DC-2021-003	FFY2020 5339 (c) Low-No Metrobus Zero-Emission Fleet Program	6/30/2026	\$4.2 M	\$3.7 M	\$0.5 M
DC-2021-012	FFY2021 5312 COVID-19 Research and Demonstration Project	3/30/2026	\$0.6 M	\$0.3 M	\$0.3 M
DC-2021-014	FFY2021 5339 Bladensburg Bus Garage	12/30/2027	\$33.6 M	\$33.3 M	\$0.3 M
DC-2022-010	FFY2022 PRIIA WMATA Office of Inspector General	9/1/2026	\$15.0 M	\$14.7 M	\$0.3 M
DC-2022-012	FFY2022 Section 5337 Railcar Preventive Maintenance, Railcar Scheduled Maintenance Program and Track Preventive Maintenance Program	6/30/2026	\$301.3 M	\$278.7 M	\$22.6 M
DC-2022-014	FFY 2022 Section 5307 Bladensburg Bus Garage, Northern Bus Garage and Rail Station Revitalization Program	12/30/2027	\$355.9 M	\$320.2 M	\$35.7 M
DC-2022-015	FFY2022 5307 Bus Replacements, Van Replacements, Bus Rehabilitation, and Bus Preventive Maintenance	12/30/2027	\$160.4 M	\$84.7 M	\$75.7 M
DC-2022-016	FFY2022 Section 5337 Rehabilitation of Yellow Line Bridge and Tunnel, Rehabilitation of Bridge Structures and Construction of Heavy Repair Overhaul Facility	7/30/2027	\$198.3 M	\$106.9 M	\$91.4 M
DC-2022-017	FFY2022 Section 5307 Station Entrance Canopies and Stairways, Rehabilitation of Parking Facilities, Rail Station Cooling, and AC Power and Switches	12/30/2026	\$35.4 M	\$27.8 M	\$7.7 M
DC-2022-018	FFY2022 PRIIA WMATA Vertical Transportation, Support Facility Fire System Rehabilitation, Tunnel Water Leak Mitigation, Platform Rehab (Phase 4), Automatic Train Control and Radio Infrastructure	3/1/2026	\$143.5 M	\$140.0 M	\$3.5 M
DC-2023-007	FFY2023 PRIIA WMATA Vertical Transportation, Yellow Line Tunnel and Bridge Rehabilitation, Tunnel Water Leak Mitigation, Automatic Train Control Rooms	6/30/2026	\$143.5 M	\$139.0 M	\$4.5 M

Note: Drawn numbers are from inception through 06/30/2025 which include updated period of performance end dates.



FEDERAL AWARDS UPDATE

FTA Awards Status – Details Con't

Federal Award ID	Application Name	PoP End Date	Federal Award	Drawn	Balance
DC-2024-002	FFY24 VA CMAQ WMATA Bus Replacement	12/30/2026	\$3.4 M	\$0.0 M	\$3.4 M
DC-2024-009	FFY2024 PRIIA WMATA - ELES Water Intrusion, Escalator Replacement, Prime Mover Replacement, ATC Train Control Rooms, AC Switchgear Rehab, Railcar SMP and Tunnel Leak Mitigation	6/30/2027	\$143.5 M	\$69.4 M	\$74.1 M
DC-2024-013	Section 5337 Preventive Maintenance Track and Railcars, Station Cooling, Parking Rehab, Station Gate Replacements	6/30/2026	\$184.5 M	\$56.1 M	\$128.4 M
DC-2024-014	FFY24 Section 5307 Bus Preventive Maintenance and Rehabilitation, Security Systems, MTPD Projects, and ADA L'Enfant Elevator	12/1/2027	\$45.6 M	\$30.4 M	\$15.2 M
DC-2025-004	PRIIA WMATA Office of Inspector General	6/30/2028	\$5.0 M	\$0.0 M	\$5.0 M
DC-2025-005	FFY2025 PRIIA WMATA-Railcar SMP, Escalator Replacement, ATC Train Control Rooms, AC Switchgear Rehab, and Tunnel Leak Mitigation	12/29/2028	\$143.5 M	\$18.3 M	\$125.2 M
DC-2025-006	FFY2025 VA CMAQ WMATA Bus Replacement		\$3.8 M	\$0.0 M	\$3.8 M

Note: Drawn numbers are from inception through 06/30/2025 which include updated period of performance end dates.



TABLE 1: CAPITAL PROGRAM FINANCIALS BY INVESTMENT CATEGORY

Capital Investments	FY2026 Current Budget	FY2026 YTD Actuals	YTD % Budget Expended
Acquisition	95.1	12.2	13%
Maintenance & Overhaul	258.8	59.5	23%
Maintenance Facilities	46.6	2.7	6%
Railcar and Railcar Facilities	400.5	74.5	19%
Power	112.1	20.3	18%
Signals & Communications	224.0	64.3	29%
Rail Systems	336.0	84.6	25%
Fixed Rail	213.5	38.1	18%
Structures	76.5	13.4	17%
Track and Structures Rehabilitation	289.9	51.5	18%
Platforms & Structures	95.8	21.1	22%
Vertical Transportation	64.1	15.6	24%
Station Systems	172.1	39.0	23%
Stations and Passenger Facilities	331.9	75.6	23%
Acquisition	102.1	11.4	11%
Maintenance & Overhaul	77.8	15.1	19%
Maintenance Facilities	240.1	47.9	20%
Passenger Facilities & Systems	28.9	4.9	17%
Bus, Bus Facilities and Paratransit	448.8	79.3	18%
IT	125.7	24.0	19%
MTPD	3.7	1.2	34%
Support Equipment & Services	181.0	34.6	19%
Business and Operations Support	310.4	59.8	19%
Total Capital Programs	2,117.6	425.2	20%

Note: Dollars in millions.

TABLE 2: CAPITAL PROGRAM FINANCIALS AND ADJUSTMENTS BY PROJECT

CIP	PROJECT NAME	FY2026 ORIGINAL BUDGET	BUDGET ADJUSTMENTS	FY2026 CURRENT BUDGET	FY2026 YTD ACTUALS	YTD% BUDGET EXPENDED
CIP0059	8000-Series Railcars	75.8	0.0	75.8	3.5	5%
CIP0256	7000-Series Railcars	18.2	0.0	18.2	7.5	41%
CRB0020_01	Silver Line Phase 2 Railcars	1.2	0.0	1.2	1.2	100%
Railcar Acquisition		95.1	0.0	95.1	12.2	13%
CIP0063	Rail Vehicle Rehab Program	150.2	0.0	150.2	39.6	26%
CIP0067	Railcar Safety & Reliability	0.9	0.0	0.9	0.1	14%
CIP0142	Railcar Preventative Maint	107.8	0.0	107.8	9.8	9%
CIP0900	Preventative Maint	0.0	0.0	0.0	10.0	0%
Railcar Maintenance/Overhaul		258.8	0.0	258.8	59.5	23%
CIP0225	Heavy Repair & Overhaul Facil	0.0	1.1	1.1	0.2	15%
CIP0279	Railyard Shop Equipment Replacement	9.9	0.0	9.9	0.2	2%
CIP0283	Major Railcar Maint Equip SOGR	0.0	0.0	0.0	0.0	0%
CIP0284	Railyard Facility & Site Rehabilitation	35.6	0.0	35.6	2.4	7%
Railcar Maintenance Facilities		45.5	1.1	46.6	2.7	6%
Railcar Investments		399.5	1.1	400.5	74.5	19%
CIP0076	100% 8-Car Train Power Upgrade	0.0	0.0	0.0	0.0	0%
CIP0253	Traction Power SOGR	105.7	0.0	105.7	20.0	19%
CIP0286	Power Generator Replacement	6.3	0.0	6.3	0.3	4%
Propulsion		112.1	0.0	112.1	20.3	18%
CIP0136	Radio Infrastructure Replace	31.3	0.0	31.3	8.0	26%
CIP0251	Automatic Train Control SOGR	86.5	0.0	86.5	24.3	28%
CIP0257	Emergency Trip Station Rehab	0.0	0.3	0.3	0.0	0%
CIP0332	Fiber Optic Cable Installation	86.8	0.0	86.8	30.0	35%
CIP0380	CBTC Strat Prog Impl. Dev	16.4	0.0	16.4	2.0	12%
CRB0138	ATC Training Lab2 MWA	1.6	0.0	1.6	0.0	0%
CRB0139	IDW Boxes Replacement	1.2	0.0	1.2	0.0	0%
Signals & Communications		223.7	0.3	224.0	64.3	29%
Rail Systems Investments		335.8	0.3	336.0	84.6	25%
CIP0024	Track Rehabilitation	106.6	0.0	106.6	32.8	31%
CIP0025	Roadway Equip & Vehicle Repl	26.9	-2.0	24.9	1.8	7%
CIP0246	General Engineering	16.6	0.0	16.6	3.0	18%
CIP0247	Emerg Constr & Emerging Needs	93.9	-28.7	65.2	0.0	0%
CIP8011	D&E Fixed Rail Improvements	0.1	0.0	0.1	0.5	364%
Fixed Rail		244.2	-30.7	213.5	38.1	18%
CIP0026	Station/Tunnel Leak Mitigation	0.0	0.0	0.0	0.0	0%
CIP0262	Tunnel Water Leak Mitigation	8.9	0.0	8.9	2.5	27%
CIP0291	Tunnel Ventilation Improvement	0.0	0.0	0.0	0.0	0%
CIP0294	Bridge Rehabilitation Program	3.3	0.0	3.3	0.8	23%
CIP0356	Tunnel Vent Improvements- Red Line Pilot	0.0	11.7	11.7	1.1	10%
CIP8013	D&E Track Structures Improve	1.5	1.5	3.0	0.6	20%
CIP0348	Structural Rehabilitation - Package A	13.5	0.0	13.5	1.3	9%
CIP0370	Structural Rehabilitation - Package B	10.0	0.0	10.0	0.2	2%
CIP0375	Shaft Structural Rehab	26.1	0.0	26.1	7.0	27%
Structures		63.3	13.2	76.5	13.4	17%
Track and Structures Rehabilitation Investments		307.4	-17.5	289.9	51.5	18%

Note: Dollars in millions.

TABLE 2: CAPITAL PROGRAM FINANCIALS AND ADJUSTMENTS BY PROJECT

CIP	PROJECT NAME	FY2026 ORIGINAL BUDGET	BUDGET ADJUSTMENTS	FY2026 CURRENT BUDGET	FY2026 YTD ACTUALS	YTD% BUDGET EXPENDED
CIP0035	Bicycle & Pedestrian Facility	2.0	0.0	2.0	0.1	3%
CIP0087	Station & Facility Restoration	11.3	0.0	11.3	2.9	26%
CIP0088	Station Entrance Canopies	10.0	0.0	10.0	2.5	25%
CIP0152	Prkg Garage & Surf Lot Rehab	12.0	0.7	12.6	4.6	37%
CIP0218	Metrorail Station Upgrades	0.7	0.0	0.7	1.0	144%
CIP0243	L'Enfant Station Improvements	1.5	0.0	1.5	0.2	10%
CIP0274	Grosvenor Parking Garage (J/D)	0.0	0.0	0.0	0.0	0%
CIP0297	Union Station Improvements	1.9	0.0	1.9	0.0	0%
CIP0305	Rail Passenger Facility SOGR	7.8	0.0	7.8	0.7	9%
CIP0308	Station Platform Rehabilitation Phase 3	0.0	0.0	0.0	0.8	0%
CIP0310	Station Platform Rehabilitation Phase 4	0.0	1.2	1.2	0.2	21%
CIP0374	Solar Site Improvements	0.0	0.0	0.0	0.0	0%
CIP0379	Silver Line Known Defects	1.3	0.0	1.3	0.0	3%
CIP0398	Grosvenor Platform Project	10.0	0.0	10.0	0.3	3%
CRB0013	Potomac Yard Station Construction	0.0	0.0	0.0	0.2	0%
CRB0020	Silver Line Phase 2 Construction Support	1.4	0.0	1.4	0.4	25%
CRB0127	Purple Line Construction Support	29.1	0.0	29.1	6.1	21%
CRB0137	Crystal City East Entrance	4.5	0.0	4.5	1.0	21%
CRB0140	Ballston West Entrance	0.1	0.0	0.1	0.0	13%
CRB0141	East Falls Church Bus Bay Exp.	0.3	0.0	0.3	0.1	26%
Platforms & Structures		93.9	1.9	95.8	21.1	22%
CIP0072	Elevator Rehabilitation Prog	8.5	0.0	8.5	3.2	38%
CIP0073	Escalator Rehabilitation Prog	0.0	0.0	0.0	2.6	0%
CIP0132	Escalator & Elevator Overhaul	24.8	0.0	24.8	2.3	9%
CIP0185	Escalator Replacement	30.8	0.0	30.8	7.5	25%
Vertical Transportation		64.1	0.0	64.1	15.6	24%
CIP0388	Parking Access Rev Sys. Rplcmt	0.0	1.2	1.2	0.0	3%
CIP0145	Facility Security Equip Prog	5.7	0.0	5.7	1.9	33%
CIP0386	Enterprise Video Ops & Sec Prgm	15.9	0.0	15.9	6.4	40%
CIP0151	Rail Station Cooling Rehab	1.1	0.0	1.1	0.5	48%
CIP0219	Rail Station Lighting Improve	15.4	0.0	15.4	2.7	18%
CIP0241	Flood Resiliency Infrastructure	0.0	0.0	0.0	0.0	0%
CIP0242	Rail System Drainage Rehab	1.7	7.0	8.7	-0.8	-9%
CIP0252	Low Voltage Power SOGR	60.9	-6.0	54.9	14.2	26%
CIP0255	Fare Collection Modernization	44.4	-3.1	41.3	6.9	17%
CIP0365	Fare Modernization Phase II	0.0	0.0	0.0	0.8	0%
CIP0258	Station & Tunnel Fire Alarm	2.0	0.0	2.0	1.1	57%
CIP0272	Digital Display and Wayfinding Improvements	8.1	3.1	11.2	2.3	21%
CIP0276	Station Commercialization Plan	3.0	0.0	3.0	0.2	8%
CIP0341	Rail Sys Standpipe Replacement	11.7	0.0	11.7	2.6	22%
Station Systems		169.9	2.2	172.1	39.0	23%
Stations and Passenger Facilities Investments		327.9	4.1	331.9	75.6	23%
CIP0006	Bus Fleet Replacement Prgm	70.0	0.0	70.0	0.3	0%
CIP0015	MetroAccess Fleet Replacement	24.8	0.0	24.8	7.3	30%
CIP0355	Zero Emissions Bus	7.3	0.0	7.3	3.7	51%
Bus and Paratransit Acquisition		102.1	0.0	102.1	11.4	11%

Note: Dollars in millions.

TABLE 2: CAPITAL PROGRAM FINANCIALS AND ADJUSTMENTS BY PROJECT

CIP	PROJECT NAME	FY2026 ORIGINAL BUDGET	BUDGET ADJUSTMENTS	FY2026 CURRENT BUDGET	FY2026 YTD ACTUALS	YTD% BUDGET EXPENDED
CIP0220	Bus Planning Studies Program	0.7	0.0	0.7	0.2	38%
CIP0221	Bus Customer Facility Impv	13.8	0.0	13.8	0.2	1%
CIP0254	Bus Priority Prgm Development	5.5	0.0	5.5	0.8	14%
CIP0275	New Carrollton Garage and Bus Bays	1.9	0.0	1.9	1.8	92%
CIP0396	Better Bus Implementation	7.0	0.0	7.0	1.9	27%
Bus Passenger Facilities/Systems		28.9	0.0	28.9	4.9	17%
Bus and Paratransit Investments		440.5	8.3	448.8	79.3	18%
CIP0043	Bus Ops Mgmt. Software	3.2	0.5	3.7	0.2	5%
CIP0056	Rail Ops Mgmt. Software	0.3	0.4	0.7	0.3	43%
CIP0259	Employee Timekeeping System	0.5	0.0	0.5	0.1	23%
CIP0269	Asset Management Software	0.0	0.0	0.0	0.0	0%
CIP0330	IT Data Center	2.9	0.0	2.9	0.9	31%
CIP0331	ERP Software Replacement	74.3	0.0	74.3	10.8	15%
CIP0342	IT Hardware SOGR	17.1	0.0	17.1	5.0	29%
CIP0357	Cyber Legacy Technology	6.0	0.0	6.0	1.2	20%
CIP0358	IT Business System Support	0.0	0.0	0.0	2.5	0%
CIP0361	SOA Program	1.6	0.0	1.6	0.2	14%
CIP0362	IV&V Program	0.1	0.0	0.1	0.0	0%
CIP0384	Small IT Projects	1.4	0.0	1.4	0.2	12%
CIP8029	D&E IT Improvements	7.3	1.4	8.7	1.7	20%
CIP8030	Future IT Projects	8.8	0.0	8.8	0.8	9%
IT		123.4	2.3	125.7	24.0	19%
CIP0102	MTPD District III Substation	0.0	0.0	0.0	0.0	0%
CIP0127	Support Equipment MTPD	2.3	1.4	3.7	1.2	33%
MTPD		2.3	1.4	3.7	1.2	34%
CIP0009	Service Vehicle Replacement	7.3	0.0	7.3	1.0	13%
CIP0010	Environmental Compliance Prgm	10.3	0.0	10.3	2.8	27%
CIP0034	Revenue Collection Facility	0.0	0.1	0.1	0.0	0%
CIP0036	Procurement Program Support	12.8	0.0	12.8	1.8	14%
CIP0039	System Planning & Development	4.6	0.0	4.6	0.4	9%
CIP0099	Joint Development Prgm Support	2.0	0.0	2.0	0.6	32%
CIP0101	INCP Capital Management	1.1	0.0	1.1	0.2	18%
CIP0131	Capital Financing Support	2.0	0.0	2.0	0.3	16%
CIP0150	Non-Rev Facility Fire Systems	0.1	0.0	0.1	0.2	268%
CIP0170	Roof Rehab & Replacement	4.4	0.0	4.4	1.5	35%
CIP0197	Non-Revenue Facilities	3.6	0.0	3.6	1.0	28%
CIP0212	Sustainability Program Support	3.3	0.0	3.3	0.6	19%
CIP0213	Capital Program Management	24.6	0.0	24.6	5.7	23%
CIP0270	CAPD Program Support	38.6	0.0	38.6	7.8	20%
CIP0273	Facility Improvements	5.0	0.0	5.0	0.3	6%
CIP0277	Supply Chain Modernization	0.6	0.0	0.6	0.0	8%
CIP0324	Cap Program Financial Support	1.9	0.0	1.9	0.0	1%
CIP0335	Office Consolidation - DC	1.3	0.2	1.5	0.9	61%

Note: Dollars in millions.

TABLE 2: CAPITAL PROGRAM FINANCIALS AND ADJUSTMENTS BY PROJECT

CIP	PROJECT NAME	FY2026 ORIGINAL BUDGET	BUDGET ADJUSTMENTS	FY2026 CURRENT BUDGET	FY2026 YTD ACTUALS	YTD% BUDGET EXPENDED
CIP0336	Energy Management Upgrades	0.2	-0.2	0.0	0.0	0%
CIP0337	Office Consolidation - VA	0.5	0.0	0.5	0.3	67%
CIP0338	Office Consolidation - MD	0.0	0.0	0.0	0.2	0%
CIP0397	Back Up MICC- CTF	5.0	0.0	5.0	0.1	2%
CIP0339	Emergency Egress Improvements	0.0	0.0	0.0	0.2	0%
CIP0347	Acct Capital Program Support	3.4	0.0	3.4	0.6	18%
CIP0373	Interim OCC	0.0	0.0	0.0	0.0	0%
CIP0381	Center of Excellence Dept	10.0	0.0	10.0	0.8	8%
CIP0382	Content Management Sys Upgrade	2.5	0.0	2.5	0.0	0%
CIP0389	ERP Systems FY25	11.5	0.0	11.5	2.7	24%
CIP0390	Web Tech - FY25	9.3	0.0	9.3	2.0	21%
CIP0391	Tool Systems - FY25	6.1	0.0	6.1	0.6	10%
CIP0392	Transit Systems - FY25	4.7	0.0	4.7	0.8	17%
CIP0393	Maximo/Asset Mgmt O&M FY25	1.0	0.0	1.0	0.0	0%
CIP0395	Windchill O&M - FY25	0.3	0.0	0.3	0.0	0%
CRB0005	Planning Support for DC	1.0	0.0	1.0	0.1	8%
CRB0009	Planning Support for MD	1.0	0.0	1.0	0.5	47%
CRB0018	Planning Support for VA	1.0	0.0	1.0	0.3	30%
CIP8034	Future Support Equip Projects	0.0	0.0	0.0	0.0	0%
Support Equipment/Services		180.9	0.1	181.0	34.6	19%
Business Support Investments		306.5	3.8	310.4	59.8	19%
Total Capital Programs		2,117.6	0.0	2,117.6	425.2	20%

Note: Dollars in millions.

TABLE 3: SOURCES OF FUNDS (BUDGETED VS. ACTUAL SPEND)

Funding Source	FY2026 Original Budget	FY2026 YTD Spend
Federal Formula	470.0	115.9
Federal PRIIA	143.5	19.9
Other Federal Grants	11.5	1.4
Total Federal	625.0	137.3
Match & System Performance	311.1	18.1
PRIIA/RSI Match	148.5	19.9
Dedicated Funding	500.0	13.3
Local Reimbursable	42.4	23.3
Open Receivable	0.0	0.0
Other Local	1.1	0.0
Total Jurisdictional	1,003.1	74.7
Debt	653.5	246.9
Net Accruals		-33.7
Total	2,281.6	425.2

TABLE 4: CAPITAL PROGRAM EXPENDITURES BY FUND SOURCE

CIP	PROJECT NAME	FY2026 CURRENT BUDGET	FY2026 Actuals	Formula	PRIIA	Other Federal	System Performance	Dedicated - District of Columbia	Dedicated - State of Maryland	Dedicated - Commonwealth of Virginia - Restricted	Dedicated - Commonwealth of Virginia - Unrestricted	Local Reimbursible	Other Local	Debt	Net Accruals
CIP0059	8000-Series Railcars	75,774,093	3,478,778	-	-	-	699,162	-	-	-	-	-	-	1,342,270	1,437,346
CIP0256	7000-Series Railcars	18,164,559	7,490,216	-	-	-	2,695,534	1,531	1,432	1,054	271	-	-	3,931,280	859,115
CRB0020_01	Silver Line Phase 2 Railcars	1,194,393	1,194,394	-	-	-	-	-	-	-	-	1,194,394	-	-	-
Railcar Acquisition		95,133,045	12,163,388	-	-	-	3,394,696	1,531	1,432	1,054	271	1,194,394	-	5,273,550	2,296,461
CIP0063	Rail Vehicle Rehab Program	150,162,139	39,609,910	153,315	22,337,292	-	-	2,189,536	2,048,473	1,507,529	387,615	-	-	8,803,604	2,182,545
CIP0067	Railcar Safety & Reliability	882,975	125,896	-	-	-	-	-	-	-	-	-	-	122,386	3,510
CIP0142	Railcar Preventative Maint	107,800,000	9,826,561	27,699,319	-	-	-	-	-	-	-	-	-	-	(17,872,759)
CIP0900	Preventative Maint	-	9,984,342	-	-	-	-	-	-	-	-	-	-	2,621,421	7,362,922
Railcar Maintenance/Overhaul		258,845,114	59,546,708	27,852,635	22,337,292	-	-	2,189,536	2,048,473	1,507,529	387,615	-	-	11,547,411	(8,323,782)
CIP0225	Heavy Repair & Overhaul Facil	1,050,000	152,730	-	-	-	-	-	-	-	-	-	-	350,333	(197,603)
CIP0279	Railyard Shop Equipment Replacement	9,888,249	196,710	-	-	-	-	-	-	-	-	-	-	228,488	(31,778)
CIP0283	Major Railcar Maint Equip SOGR	-	21,529	-	-	-	-	-	-	-	-	-	-	23,069	(1,540)
CIP0284	Railyard Facility & Site Rehabilitation	35,627,000	2,373,979	-	-	-	-	8,444	7,900	5,814	1,495	-	-	2,667,689	(317,363)
Railcar Maintenance Facilities		46,565,249	2,744,948	-	-	-	-	8,444	7,900	5,814	1,495	-	-	3,269,578	(548,284)
Railcar Investments		400,543,408	74,455,044	27,852,635	22,337,292	-	3,394,696	2,199,511	2,057,806	1,514,397	389,381	1,194,394	-	20,090,539	(6,575,605)
CIP0076	100% 8-Car Train Power Upgrade	-	10,963	-	-	-	-	-	-	-	-	-	-	239,950	(228,987)
CIP0253	Traction Power SOGR	105,736,762	20,001,784	-	-	-	-	-	-	-	-	-	-	19,310,485	691,299
CIP0286	Power Generator Replacement	6,324,330	266,437	-	-	-	-	-	-	-	-	-	-	322,489	(56,052)
Propulsion		112,061,093	20,279,184	-	-	-	-	-	-	-	-	-	-	19,872,924	406,260
CIP0136	Radio Infrastructure Replace	31,300,252	8,018,071	-	-	-	-	-	-	-	-	-	-	5,978,311	2,039,760
CIP0251	Automatic Train Control SOGR	86,472,602	24,256,389	-	12,835,970	-	-	74,553	69,750	51,331	13,198	-	-	10,474,145	737,442
CIP0257	Emergency Trip Station Rehab	250,000	-	-	-	-	-	-	-	-	-	-	-	-	-
CIP0332	Fiber Optic Cable Installation	86,812,972	30,044,480	-	-	-	-	-	-	-	-	-	-	37,286,812	(7,242,332)
CIP0380	CBTC Strat Prog Impl. Dev	16,352,000	1,973,897	-	-	-	-	-	-	-	-	-	-	1,400,678	573,219
CRB0138	ATC Training Lab2 MWAA	1,619,716	-	-	-	-	-	-	-	-	-	-	-	-	-
CRB0139	IDW Boxes Replacement	1,173,153	-	-	-	-	-	-	-	-	-	-	-	-	-
Signals & Communications		223,980,694	64,292,837	-	12,835,970	-	-	74,553	69,750	51,331	13,198	-	-	55,139,946	(3,891,911)
Rail Systems Investments		336,041,787	84,572,021	-	12,835,970	-	-	74,553	69,750	51,331	13,198	-	-	75,012,870	(3,485,651)

Note: All figures are preliminary and unaudited; chart and table totals may not sum due to independent rounding.

TABLE 4: CAPITAL PROGRAM EXPENDITURES BY FUND SOURCE

CIP	PROJECT NAME	FY2026 CURRENT BUDGET	FY2026 Actuals	Formula	PRIIA	Other Federal	System Performance	Dedicated - District of Columbia	Dedicated - State of Maryland	Dedicated - Commonwealth of Virginia - Restricted	Dedicated - Commonwealth of Virginia - Unrestricted	Local Reimbursible	Other Local	Debt	Net Accruals
CIP0024	Track Rehabilitation	106,604,002	32,758,820	22,974,626	-	-	-	557,192	521,294	383,635	98,640	-	-	7,616,472	606,961
CIP0025	Roadway Equip & Vehicle Repl	24,908,900	1,794,635	-	-	-	-	-	-	-	-	-	-	2,288,218	(493,582)
CIP0246	General Engineering	16,602,000	3,017,234	-	-	-	-	-	-	-	-	-	-	2,939,926	77,308
CIP0247	Emerg Constr & Emerging Needs	65,213,000	38,741	-	-	-	-	-	-	-	-	-	-	974,048	(935,307)
CIP8011	D&E Fixed Rail Improvements	143,623	522,656	-	-	-	296,940	-	-	-	-	-	-	207,558	18,158
Fixed Rail		213,471,526	38,132,086	22,974,626	-	-	296,940	557,192	521,294	383,635	98,640	-	-	14,026,221	(726,463)
CIP0026	Station/Tunnel Leak Mitigation	-	274	-	-	-	274	-	-	-	-	-	-	-	(0)
CIP0262	Tunnel Water Leak Mitigation	8,932,000	2,454,888	-	2,069,041	-	-	2,628	2,459	1,810	465	-	-	115,952	262,533
CIP0291	Tunnel Ventilation Improvement	-	(1,013)	-	-	-	-	-	-	-	-	-	-	562	(1,575)
CIP0294	Bridge Rehabilitation Program	3,250,000	759,227	-	-	-	-	-	-	-	-	-	-	725,581	33,646
CIP0356	Tunnel Vent Improvements- Red Line Pilot	11,700,000	1,114,007	-	-	-	-	-	-	-	-	-	-	1,435,134	(321,128)
CIP8013	D&E Track Structures Improve	3,000,000	607,903	-	-	-	-	-	-	-	-	-	-	228,707	379,196
CIP0348	Structural Rehabilitation - Package A	13,500,824	1,279,239	-	-	-	-	-	-	-	-	-	-	995,308	283,931
CIP0370	Structural Rehabilitation - Package B	10,000,000	189,922	-	-	-	-	-	-	-	-	-	-	203,059	(13,137)
CIP0375	Shaft Structural Rehab	26,070,000	6,951,697	-	-	-	-	-	-	-	-	-	-	5,462,463	1,489,234
Structures		76,452,824	13,356,143	-	2,069,041	-	274	2,628	2,459	1,810	465	-	-	9,166,766	2,112,700
Track and Structures Rehabilitation Investments		289,924,350	51,488,229	22,974,626	2,069,041	-	297,214	559,820	523,753	385,445	99,105	-	-	23,192,987	1,386,237
CIP0035	Bicycle & Pedestrian Facility	2,020,000	61,543	-	-	-	-	13,788	12,899	9,493	2,441	-	-	109,229	(86,307)
CIP0087	Station & Facility Restoration	11,300,000	2,881,544	-	-	-	-	-	-	-	-	-	-	2,814,971	66,574
CIP0088	Station Entrance Canopies	10,001,299	2,474,116	702,208	-	-	-	118,732	111,083	81,749	21,019	-	-	158,916	1,280,410
CIP0152	Prkg Garage & Surf Lot Rehab	12,617,920	4,646,658	1,668,551	-	-	-	195,377	182,790	134,520	34,588	-	-	1,142,385	1,288,448
CIP0218	Metrorail Station Upgrades	708,515	1,019,835	491,549	-	-	-	26,671	24,953	18,364	4,722	-	-	304,584	148,994
CIP0243	L'Enfant Station Improvements	1,490,000	155,284	-	-	-	19,632	-	-	-	-	-	-	80,469	55,183
CIP0274	Grosvenor Parking Garage (J/D)	-	22,759	-	-	-	-	-	-	-	-	-	-	13,653	9,106
CIP0297	Union Station Improvements	1,917,211	-	-	-	-	-	-	-	-	-	-	-	-	-
CIP0305	Rail Passenger Facility SOGR	7,832,000	728,380	-	-	-	-	83,274	77,909	57,336	14,742	-	-	460,607	34,511
CIP0308	Station Platform Rehabilitation Phase 3	-	778,608	-	-	-	-	-	-	-	-	-	-	793,217	(14,610)
CIP0310	Station Platform Rehabilitation Phase 4	1,200,000	246,146	-	-	-	-	-	-	-	-	-	-	324,021	(77,875)

Note: All figures are preliminary and unaudited; chart and table totals may not sum due to independent rounding.

TABLE 4: CAPITAL PROGRAM EXPENDITURES BY FUND SOURCE

CIP	PROJECT NAME	FY2026 CURRENT BUDGET	FY2026 Actuals	Formula	PRIIA	Other Federal	System Performance	Dedicated - District of Columbia	Dedicated - State of Maryland	Dedicated - Commonwealth of Virginia - Restricted	Dedicated - Commonwealth of Virginia - Unrestricted	Local Reimbursible	Other Local	Debt	Net Accruals
CIP0374	Solar Site Improvements	-	16,206	-	-	-	-	-	-	-	-	-	-	1,557,856	(1,541,651)
CIP0379	Silver Line Known Defects	1,298,820	33,415	-	-	-	-	-	-	-	-	-	-	77,087	(43,673)
CIP0398	Grosvenor Platform Project	10,000,000	265,462	-	-	-	-	-	-	-	-	-	-	298,231	(32,768)
CRB0013	Potomac Yard Station Construction	-	187,627	-	-	-	-	-	-	-	-	12,405,840	-	-	(12,218,213)
CRB0020	Silver Line Phase 2 Construction Support	1,428,702	361,323	-	-	-	-	-	-	-	-	376,756	-	-	(15,433)
CRB0127	Purple Line Construction Support	29,083,666	6,124,379	-	-	-	-	-	-	-	-	7,424,130	-	-	(1,299,751)
CRB0137	Crystal City East Entrance	4,509,532	963,767	-	-	-	-	-	-	-	-	822,360	-	-	141,407
CRB0140	Ballston West Entrance	100,000	13,214	-	-	-	-	-	-	-	-	7,887	-	-	5,327
CRB0141	East Falls Church Bus Bay Exp.	288,000	73,829	-	-	-	-	-	-	-	-	64,273	-	-	9,556
Platforms & Structures		95,795,664	21,054,095	2,862,307	-	-	19,632	437,842	409,634	301,461	77,512	21,101,245	-	8,135,224	(12,290,763)
CIP0072	Elevator Rehabilitation Prog	8,535,651	3,200,976	-	-	-	-	-	-	-	-	-	-	2,271,234	929,742
CIP0073	Escalator Rehabilitation Prog	-	2,563,546	-	-	-	4,735,817	-	-	-	-	-	-	25,537	(2,197,807)
CIP0132	Escalator & Elevator Overhaul	24,767,821	2,310,320	-	149,941	-	-	339,552	317,676	233,787	60,111	-	-	1,872,483	(663,231)
CIP0185	Escalator Replacement	30,757,000	7,541,796	-	1,233,143	-	-	197,551	184,824	136,017	34,973	-	-	409,666	5,345,623
Vertical Transportation		64,060,472	15,616,638	-	1,383,084	-	4,735,817	537,104	502,500	369,804	95,084	-	-	4,578,919	3,414,327
CIP0388	Parking Access Rev Sys. Rplcmt	1,200,000	30,500	-	-	-	-	-	-	-	-	-	-	30,500	-
CIP0145	Facility Security Equip Prog	5,736,608	1,910,001	-	-	-	-	-	-	-	-	-	-	1,445,263	464,738
CIP0386	Enterprise Video Ops & Sec Prgm	15,865,464	6,380,876	4,633,994	-	-	-	-	-	-	-	-	-	4,043,818	(2,296,937)
CIP0151	Rail Station Cooling Rehab	1,103,036	526,655	286,627	-	-	-	-	-	-	-	-	-	19,551	220,477
CIP0219	Rail Station Lighting Improve	15,432,709	2,747,454	-	-	-	-	-	-	-	-	-	-	1,946,572	800,882
CIP0241	Flood Resiliency Infrastructure	-	(498)	-	-	-	-	-	-	-	-	-	-	154,670	(155,168)
CIP0242	Rail System Drainage Rehab	8,693,000	(786,268)	-	-	-	-	-	-	-	-	-	-	168,661	(954,929)
CIP0252	Low Voltage Power SOGR	54,926,628	14,206,323	-	1,273,420	-	-	124,937	116,888	86,021	22,118	-	-	6,746,895	5,836,045
CIP0255	Fare Collection Modernization	41,277,000	6,884,571	-	-	-	-	-	-	-	-	-	-	7,038,038	(153,467)
CIP0365	Fare Modernization Phase II	-	750,483	-	-	-	-	-	-	-	-	-	-	646,943	103,540
CIP0258	Station & Tunnel Fire Alarm	2,000,000	1,139,819	-	-	-	-	12,677	11,861	8,729	2,244	-	-	1,278,155	(173,846)
CIP0272	Digital Display and Wayfinding Improvements	11,173,000	2,346,665	-	-	-	-	-	-	-	-	-	-	2,570,153	(223,489)
CIP0276	Station Commercialization Plan	2,954,530	240,285	-	-	-	-	-	-	-	-	-	-	215,373	24,912

Note: All figures are preliminary and unaudited; chart and table totals may not sum due to independent rounding.

TABLE 4: CAPITAL PROGRAM EXPENDITURES BY FUND SOURCE

CIP	PROJECT NAME	FY2026 CURRENT BUDGET	FY2026 Actuals	Formula	PRIIA	Other Federal	System Performance	Dedicated - District of Columbia	Dedicated - State of Maryland	Dedicated - Commonwealth of Virginia - Restricted	Dedicated - Commonwealth of Virginia - Unrestricted	Local Reimbursible	Other Local	Debt	Net Accruals
CIP0341	Rail Sys Standpipe Replacement	11,698,000	2,583,726	-	-	-	-	-	-	-	-	-	-	1,892,054	691,672
Station Systems		172,059,974	38,960,593	4,920,621	1,273,420	-	-	137,614	128,748	94,750	24,362	-	-	28,196,647	4,184,431
Stations and Passenger Facilities Investments		331,916,111	75,631,326	7,782,928	2,656,503	-	4,755,448	1,112,560	1,040,883	766,015	196,957	21,101,245	-	40,910,791	(4,692,006)
CIP0006	Bus Fleet Replacement Prgm	70,000,000	325,208	274,687	-	-	-	11,405	10,670	7,852	2,019	-	-	692	17,883
CIP0015	MetroAccess Fleet Replacement	24,773,000	7,337,231	4,761,715	-	-	-	-	-	-	-	-	-	2,961,582	(386,066)
CIP0355	Zero Emissions Bus	7,288,382	3,731,336	1,620	-	-	-	-	-	-	-	-	-	3,698,279	31,437
Bus and Paratransit Acquisition		433,977,493	11,393,775	5,038,022	-	-	-	11,405	10,670	7,852	2,019	-	-	6,660,553	(336,746)
CIP0002	Bus Location Equip Replacement	7,000,000	1,357,649	-	-	-	-	-	-	-	-	-	-	3,898,485	(2,540,836)
CIP0004	Bus Maint Equip Replacement	2,500,000	409,677	-	-	-	-	-	-	-	-	-	-	434,729	(25,051)
CIP0005	Bus Rehabilitation Program	67,312,000	13,312,702	7,274,697	-	-	-	425,535	398,120	292,988	75,333	-	-	3,856,489	989,541
CIP0143	Bus Vehicle Preventive Maint.	1,000,000	-	-	-	-	-	-	-	-	-	-	-	-	-
Bus Maintenance/Overhaul		77,812,000	15,080,029	7,274,697	-	-	-	425,535	398,120	292,988	75,333	-	-	8,189,703	(1,576,347)
CIP0311	Bladensburg Bus Garage Rehabilitation	100,000,000	7,649,825	10,957,143	-	-	-	-	-	-	-	-	-	1,897,834	(5,205,152)
CIP0315	Northern Bus Garage Replacement	135,000,000	40,230,500	33,855,795	-	-	-	-	-	-	-	-	-	2,581,700	3,793,005
CIP0319	Bus Maintenance Facility SOGR	-	(1,540)	-	-	-	-	-	-	-	-	-	-	-	(1,540)
CIP0376	Western Bus Garage Rehab	-	26,545	-	-	-	-	-	-	-	-	-	-	22,311,813	(22,285,268)
CIP0383	Cinderbed Electric Bus Garage	5,060,436	2,238	-	-	-	-	-	-	-	-	-	-	2,238	-
Bus Maintenance Facilities		240,060,436	47,907,567	44,812,937	-	-	-	-	-	-	-	-	-	26,793,585	(23,698,955)
CIP0220	Bus Planning Studies Program	659,000	249,339	-	-	-	-	-	-	-	-	-	-	245,365	3,974
CIP0221	Bus Customer Facility Impv	13,800,000	180,650	-	-	-	-	-	-	-	-	-	-	186,287	(5,636)
CIP0254	Bus Priority Prgm Development	5,474,000	780,698	-	-	-	106,417	8,834	8,265	6,083	1,564	-	-	639,441	10,094
CIP0275	New Carrollton Garage and Bus Bays	1,943,406	1,793,877	-	-	-	-	203	190	140	36	-	-	129,993	1,663,315
CIP0396	Better Bus Implementation	7,000,000	1,871,888	-	-	-	417,168	-	-	-	-	-	-	2,451,111	(996,391)
Bus Passenger Facilities/Systems		28,876,406	4,876,452	-	-	-	523,585	9,037	8,455	6,222	1,600	-	-	3,652,197	675,356
Bus and Paratransit Investments		780,726,335	79,257,823	57,125,656	-	-	523,585	445,977	417,245	307,062	78,952	-	-	45,296,037	(24,936,691)
CIP0043	Bus Ops Mgmt. Software	3,682,383	178,538	-	-	-	-	-	-	-	-	-	-	227,013	(48,475)
CIP0056	Rail Ops Mgmt. Software	740,000	317,954	-	-	-	-	-	-	-	-	-	-	326,931	(8,977)

Note: All figures are preliminary and unaudited; chart and table totals may not sum due to independent rounding.

TABLE 4: CAPITAL PROGRAM EXPENDITURES BY FUND SOURCE

CIP	PROJECT NAME	FY2026 CURRENT BUDGET	FY2026 Actuals	Formula	PRIIA	Other Federal	System Performance	Dedicated - District of Columbia	Dedicated - State of Maryland	Dedicated - Commonwealth of Virginia - Restricted	Dedicated - Commonwealth of Virginia - Unrestricted	Local Reimbursible	Other Local	Debt	Net Accruals
CIP0259	Employee Timekeeping System	450,000	105,075	-	-	-	35,250	-	-	-	-	-	-	112,013	(42,188)
CIP0269	Asset Management Software	-	(30,000)	-	-	-	-	-	-	-	-	-	-	136,216	(166,216)
CIP0330	IT Data Center	2,929,000	904,243	-	-	-	-	-	-	-	-	-	-	714,156	190,087
CIP0331	ERP Software Replacement	74,311,749	10,840,565	-	-	-	-	-	-	-	-	-	-	6,296,017	4,544,548
CIP0342	IT Hardware SOGR	17,111,822	5,030,170	-	-	-	-	-	-	-	-	-	-	4,720,268	309,902
CIP0357	Cyber Legacy Technology	6,000,000	1,223,436	-	-	-	-	-	-	-	-	-	-	1,176,864	46,572
CIP0358	IT Business System Support	-	2,493,348	-	-	-	-	-	-	-	-	-	-	3,793,829	(1,300,481)
CIP0361	SOA Program	1,599,996	223,394	-	-	-	-	-	-	-	-	-	-	-	223,394
CIP0362	IV&V Program	50,000	-	-	-	-	-	-	-	-	-	-	-	-	-
CIP0384	Small IT Projects	1,397,000	167,066	-	-	-	38,942	-	-	-	-	-	-	-	128,125
CIP8029	D&E IT Improvements	8,651,000	1,735,112	-	-	549,971	10,000	-	-	-	-	-	-	1,347,685	(172,544)
CIP8030	Future IT Projects	8,752,000	771,050	-	-	-	-	-	-	-	-	-	-	1,029,750	(258,700)
IT		125,674,950	23,959,951	-	-	549,971	84,191	-	-	-	-	-	-	19,880,741	3,445,047
CIP0102	MTPD District III Substation	-	17,118	-	-	-	-	8,149	7,624	5,611	1,443	-	-	9,887	(15,595)
CIP0127	Support Equipment MTPD	3,708,000	1,230,692	194,042	-	888,947	-	-	-	-	-	-	-	115,474	32,230
MTPD		3,708,000	1,247,811	194,042	-	888,947	-	8,149	7,624	5,611	1,443	-	-	125,361	16,635
CIP0009	Service Vehicle Replacement	7,251,864	972,273	-	-	-	1,438,680	5,715	5,347	3,935	1,012	-	-	224,623	(707,040)
CIP0010	Environmental Compliance Prgm	10,343,682	2,768,178	-	-	-	-	195,804	183,190	134,814	34,663	-	-	975,688	1,244,018
CIP0034	Revenue Collection Facility	70,000	-	-	-	-	-	-	-	-	-	-	-	-	-
CIP0036	Procurement Program Support	12,829,484	1,774,344	-	-	-	-	-	-	-	-	-	-	1,878,180	(103,836)
CIP0039	System Planning & Development	4,621,479	417,831	-	-	-	39,889	-	-	-	-	-	-	472,393	(94,451)
CIP0099	Joint Development Prgm Support	2,000,000	633,021	-	-	-	241,334	-	-	-	-	-	-	413,188	(21,502)
CIP0101	INCP Capital Management	1,120,000	200,516	-	-	-	-	-	-	-	-	-	-	124,183	76,333
CIP0131	Capital Financing Support	2,000,000	311,347	-	-	-	244,778	-	-	-	-	-	-	66,569	-
CIP0150	Non-Rev Facility Fire Systems	64,000	171,655	-	-	-	-	-	-	-	-	-	-	134,399	37,257
CIP0170	Roof Rehab & Replacement	4,400,905	1,518,410	-	-	-	-	85,762	80,237	59,049	15,183	-	-	1,319,711	(41,532)
CIP0197	Non-Revenue Facilities	3,559,327	995,220	-	-	-	-	-	-	-	-	-	-	1,071,628	(76,407)
CIP0212	Sustainability Program Support	3,299,758	633,564	-	-	-	190,565	-	-	-	-	-	-	417,864	25,136

Note: All figures are preliminary and unaudited; chart and table totals may not sum due to independent rounding.

TABLE 4: CAPITAL PROGRAM EXPENDITURES BY FUND SOURCE

CIP	PROJECT NAME	FY2026 CURRENT BUDGET	FY2026 Actuals	Formula	PRIIA	Other Federal	System Performance	Dedicated - District of Columbia	Dedicated - State of Maryland	Dedicated - Commonwealth of Virginia - Restricted	Dedicated - Commonwealth of Virginia - Unrestricted	Local Reimbursible	Other Local	Debt	Net Accruals
CIP0213	Capital Program Management	24,606,000	5,688,017	-	-	-	1,656,886	-	-	-	-	-	-	3,114,226	916,904
CIP0270	CAPD Program Support	38,625,674	7,849,076	-	-	-	4,260,906	-	-	-	-	-	-	5,162,276	(1,574,106)
CIP0273	Facility Improvements	5,000,000	309,078	-	-	-	-	12,416	11,617	8,549	2,198	-	-	314,271	(39,974)
CIP0277	Supply Chain Modernization	553,000	45,538	-	-	-	-	-	-	-	-	-	-	167,806	(122,268)
CIP0324	Cap Program Financial Support	1,894,000	16,086	-	-	-	41,779	-	-	-	-	-	-	99,695	(125,387)
CIP0335	Office Consolidation - DC	1,486,690	904,213	-	-	-	-	-	-	-	-	-	-	2,257,660	(1,353,447)
CIP0337	Office Consolidation - VA	520,000	348,715	-	-	-	-	-	-	-	-	-	-	267,694	81,021
CIP0338	Office Consolidation - MD	-	231,699	-	-	-	-	53,162	49,737	36,603	9,411	-	-	29,486	53,299
CIP0397	Back Up MICC- CTF	5,000,000	115,395	-	-	-	-	-	-	-	-	-	-	92,033	23,362
CIP0339	Emergency Egress Improvements	-	227,152	-	-	-	-	-	-	-	-	-	-	64,889	162,263
CIP0347	Acct Capital Program Support	3,399,012	617,277	-	-	-	-	-	-	-	-	-	-	584,036	33,241
CIP0373	Interim OCC	-	9,452	-	-	-	-	-	-	-	-	-	-	16,071	(6,620)
CIP0381	Center of Excellence Dept	10,000,000	785,634	-	-	-	-	-	-	-	-	-	-	617,077	168,558
CIP0382	Content Management Sys Upgrade	2,497,000	-	-	-	-	-	-	-	-	-	-	-	-	-
CIP0389	ERP Systems FY25	11,460,000	2,739,974	-	-	-	-	-	-	-	-	-	-	-	2,739,974
CIP0390	Web Tech - FY25	9,328,800	2,000,871	-	-	-	668,757	-	-	-	-	-	-	1,337,514	(5,400)
CIP0391	Tool Systems - FY25	6,057,600	602,435	-	-	-	-	-	-	-	-	-	-	602,435	-
CIP0392	Transit Systems - FY25	4,723,200	810,078	-	-	-	270,026	-	-	-	-	-	-	540,052	-
CIP0393	Maximo/Asset Mgmt O&M FY25	1,000,000	-	-	-	-	-	-	-	-	-	-	-	-	-
CIP0395	Windchill O&M - FY25	273,996	-	-	-	-	-	-	-	-	-	-	-	-	-
CRB0005	Planning Support for DC	1,000,000	75,328	-	-	-	-	-	-	-	-	282,399	-	-	(207,071)
CRB0009	Planning Support for MD	1,000,000	473,622	-	-	-	-	-	-	-	-	474,673	-	-	(1,051)
CRB0018	Planning Support for VA	1,000,000	296,027	-	-	-	-	-	-	-	-	222,936	-	-	73,091
CIP8034	Future Support Equip Projects	-	20,695	-	-	-	20,695	-	-	-	-	-	-	-	-
Support Equipment/Services		180,985,471	34,562,720	-	-	-	9,074,294	352,861	330,128	242,950	62,467	980,008	-	22,365,646	1,154,366
Business Support Investments		310,368,421	59,770,482	194,042	-	1,438,918	9,158,486	361,010	337,751	248,561	63,910	980,008	-	42,371,748	4,616,048
Total Capital Programs		2,117,604,300.16	425,174,924.69	115,929,886.79	39,898,805.96	1,438,918.19	18,129,429.32	4,753,431.13	4,447,187.67	3,272,810.57	841,503.77	23,275,646.53	-	246,874,971.73	(33,687,666.97)

Note: All figures are preliminary and unaudited; chart and table totals may not sum due to independent rounding.

TABLE 5: RECEIPT AND UTILIZATION OF JURISDICTIONAL CONTRIBUTIONS

JURISDICTION	FY2026 BUDGETED ALLOCATION	Q1 CAPITAL CONTRIBUTION BILLED	YTD CAPITAL CONTRIBUTION BILLED	Q1 CAPITAL CONTRIBUTION PAID	YTD CAPITAL CONTRIBUTION PAID	YTD Utilization of Jurisdiction Capital Contribution
District of Columbia	116,820,863	30,902,545	30,902,545	30,902,545	30,902,545	6,807,265
Montgomery County	49,821,043	13,179,127	13,179,127	13,179,127	13,179,127	2,903,121
Prince George's County	52,668,500	13,932,363	13,932,363	13,932,363	13,932,363	3,069,045
Maryland Subtotal	102,489,543	27,111,490	27,111,490	27,111,490	27,111,490	5,972,165
City of Alexandria	13,825,128	3,657,152	3,657,152	3,657,152	3,657,152	805,604
Arlington County	26,006,146	6,879,388	6,879,388	6,879,388	6,879,388	1,515,403
City of Fairfax	777,140	205,576	205,576	205,576	205,576	45,285
Fairfax County	42,468,138	11,234,068	11,234,068	11,234,068	11,234,068	2,474,660
City of Falls Church	1,006,311	266,199	266,199	266,199	266,199	58,639
Loudoun County	7,729,561	2,044,696	2,044,696	2,044,696	2,044,696	450,409
Virginia Subtotal	91,812,424	24,287,079	24,287,079	24,287,079	24,287,079	5,349,999
Federal Formula Match & System Performance Subtotal	311,122,830	82,301,114	82,301,114	82,301,114	82,301,114	18,129,429
District of Columbia	49,500,000	13,094,202	13,094,202	13,094,202	13,094,202	6,649,824
State of Maryland	49,500,000	13,094,202	13,094,202	13,094,202	13,094,202	6,649,824
Commonwealth of Virginia	49,500,000	13,094,202	13,094,202	13,094,202	13,094,202	6,649,824
State and Local PRIIA Subtotal	148,500,000	39,282,606	39,282,606	39,282,606	39,282,606	19,949,403
District of Columbia	1,000,000	264,529	264,529	264,529	264,529	75,328
Montgomery County	486,109	128,590	128,590	128,590	128,590	230,232
Prince George's County	513,891	135,939	135,939	135,939	135,939	243,390
Maryland Subtotal	1,000,000	264,529	264,529	264,529	264,529	473,622
City of Alexandria	150,580	39,833	39,833	39,833	39,833	44,576
Arlington County	283,253	74,929	74,929	74,929	74,929	83,851
City of Fairfax	8,465	2,239	2,239	2,239	2,239	2,506
Fairfax County	462,552	122,359	122,359	122,359	122,359	136,928
City of Falls Church	10,961	2,899	2,899	2,899	2,899	3,244
Loudoun County	84,189	22,270	22,270	22,270	22,270	24,922
Virginia Subtotal	1,000,000	264,529	264,529	264,529	264,529	296,027
Project Planning Subtotal	3,000,000	793,587	793,587	793,587	793,587	844,977
District of Columbia	178,500,000	-	-	-	-	-
State of Maryland	167,000,000	41,750,000	41,750,000	41,750,000	41,750,000	6,916,311
Commonwealth of Virginia - Non-Restricted	122,900,000	25,750,000	25,750,000	25,750,000	25,750,000	4,265,748
Commonwealth of Virginia - Restricted	31,600,000	12,875,000	12,875,000	12,875,000	12,875,000	2,132,874
Commonwealth of Virginia Subtotal	154,500,000	38,625,000	38,625,000	38,625,000	38,625,000	6,398,623
Dedicated Funding Subtotal	500,000,000	80,375,000	80,375,000	80,375,000	80,375,000	13,314,933
Jurisdictional Reimbursable (excluding Project Planning)	39,400,000	-	-	-	-	22,430,669
Other	1,100,000	-	-	-	-	-
Reimbursable Subtotal	40,500,000	-	-	-	-	22,430,669
Total Jurisdictional Contributions	1,003,122,830	202,752,307	202,752,307	202,752,307	202,752,307	74,669,412

Note: All figures are preliminary and unaudited; chart and table totals may not sum due to independent rounding.

TABLE 6: REPROGRAMMING (CON'T)

PCR #	Action Type	Date	CIP #	CIP Name	FY2026 Action	Outyears (FY2027-2035) Action	Total	Primary Reason for Change	Comments
587	Reprogramming	7/25/2025	257	Emergency Trip Station (ETS) System Replacement	250	-	250	Scope	This action adds scope for labor to Silver Line Phase 1 Emergency Trip Station (ETS) System Upgrade.
588	Reprogramming	7/25/2025	273	CTF Ladder Installation	-	-	-	Scope	This action initiates a capital project to install an appropriate ladder and mezzanine fall protection in CTF Building F, Room 100.
589	Reprogramming	7/25/2025	8013	MOWE Program Support	1,500	675	2,175	Schedule	This action adjusts cashflow for MOWE Program Support, Work Planning & Maintenance Improvement. There is no change to total budget, however accelerated budget will not be restored.
590	Reprogramming	7/25/2025	310	Stations Platform Rehabilitation Program - Phase 4	1,200	(3,100)	(1,900)	Schedule	This action adjusts cashflow for Stations Platform Rehabilitation - Phase 4. The transaction fro FY25 was included in PCR #6.
603	Reprogramming	7/25/2025	127_09	MTPD Dogs and Truck/Transporter	143	-	143	Scope	This action initiates a capital action to purchase and train four MTPD dogs and an explosive ordinance disposal (EOD) truck and trailer.
604	Reprogramming	7/25/2025	56	Passenger Information Software Support	440	-	440	Cost Estimate	This action allocates budget for ongoing support for Real Time Passenger Information Software Updates.
605	Reprogramming	7/25/2025	0025_08	Multi-Function Flat Cars Acquisition Investment Review	(2,000)	(12,134)	(14,134)	Cost Estimate	This action reprograms available budget from Metro's investment review.
607	Reprogramming	7/25/2025	0043_03	Forms Digitization and Process Automaton - Bus Transportation (BTRA)	483	-	483	Scope	This action initiates a capital project to automate CDL and DOT credential verification
608	Administrative	7/25/2025	127_05	MTPD - CCTV and Access Control for Body Worn Cameras	1,300	-	1,300	Cost Estimate	This administrative action aligns the FY2026 Capital Program Budget with previously approved PCR #520.
608	Administrative	7/25/2025	388	Parking Access Revenue Control (PARC) System Replacement Inventory & Design	1,200	-	1,200	Cost Estimate	This administrative action aligns the FY2026 Capital Program Budget with previously approved PCR #418.
608	Administrative	7/25/2025	8029	Readiness for Duty Technology for Bus Operators	1,400	(2,000)	(600)	Cost Estimate	This administrative action aligns the FY2026 Capital Program Budget with previously approved PCR #527.
608	Administrative	7/25/2025	0255_16	Fare Collection Website Redesign	(3,093)	-	(3,093)	Cost Estimate	This administrative action aligns the FY2026 Capital Program Budget with previously approved PCR#571 and reassigns PID10905 Fare Collection Website Redesign from CIP0255_16 wmata.com Modernization to CIP0272_07 wmata.com Replacement. There is no change to total budget.
608	Administrative	7/25/2025	0272_07	Fare Collection Website Redesign	3,093	-	3,093	Cost Estimate	This administrative action aligns the FY2026 Capital Program Budget with previously approved PCR #571 and reassigns PID10905 Fare Collection Website Redesign from CIP0255_16 wmata.com Modernization to CIP0272_07 wmata.com Replacement. There is no change to total budget.
625	Reprogramming	7/25/2025	0034_01	Revenue Collection Facility Improvements	70	-	70	Schedule	This action uses Emerging System Rehabilitation to facilitate a cashflow adjustment for Revenue Collection Improvements.
626	Reprogramming	7/25/2025	356	Ventilation Improvements Program - Red Line Demonstration	11,700	(9,922)	1,778	Schedule	This action adjusts cashflow for Tunnel Ventilation Improvements and accounts fro FY25 underspend.
587 588 589 590 603 604 605 607 608 625 626	Reprogramming	7/25/2025	247_01	Emerging System Rehabilitation	(17,686)	26,481	8,795		This action uses Emerging System Rehabilitation to adjust cashflow for all the above projects. There is no change to the total budget.
No reprogramming actions applicable to the FY2025 Capital Program were approved in August 2025.									
557	Reprogramming	9/25/2025	252_07	AC Power Room Rehabilitation - 3 Locations	2,000	22,000	24,000	Schedule	This action adjusts cashflow in the capital program to start AC Power Room Rehab at Foggy Bottom, Arlington Cemetery, and Dunn Loring in FY26. Out year actions will be captured in follow on PCR.
631	Reprogramming	9/25/2025	152_11	Landover Commercial Driver License (CDL) Training Facility	650	100	750	Scope	This action initiates a capital project to repave the CDL training lot at Landover Metrorail Station.
632	Reprogramming	9/25/2025	225	Railcar Heavy Repair and Overhaul Facility (Closeout)	1,050	-	1,050	Schedule	This action adjusts cashflow for Railcar Heavy Repair and Overhaul Facility (Closeout). This is a cashflow adjustment for FY25 to FY26.
634	Reprogramming	9/25/2025	242_05	Drainage Pump Station (DPS) Construction - Six Locations	7,000	45,000	52,000	Schedule	This action adjusts cashflow in the capital program to start Drainage Pump Station Rehabilitation Package 2 in FY26. Out year actions will be captured in a follow on PCR.
557 631 632 634	Reprogramming	9/25/2025	247_01	Emerging System Rehabilitation	(10,700)	(67,100)	(77,800)	Scope, Schedule	This action uses Emerging System Rehabilitation to facilitate cashflow for AC Power Room Rehab, repave CDL training lot, Railcar Heavy Repair and Overhaul Facility, and Drainage Pump Station Rehab Package 2.
Total					0	0	0		

Action Type Definitions

Amendments: actions approved by the Board of Directors modifying the CIP.

Administrative: actions taken for internal tracking or management purposes.

Reprogramming: a change to the scope, schedule, or six-year total cost of the project.

Cash Flow Management: a change between years of the six-year program that results in no net cost change to the project.

TABLE 7: PROCUREMENT ACTIONS

Date	CIP	Contract Number	Description	Vendor	Action Type	Amount
7/8/2025	CIP0132	FRBIR222275	Electrician Labor Services and Scaffolding; Orders-For-Services	C3M Power Systems, LLC	Task Orders	202,256
7/12/2025	CIP0324	FQ2024	Capital Financial Support	WSP USA, Inc.	Task Orders	1,236,017
7/17/2025	CIP0004	FBMNT233147	Fluid Management System	S&A Systems, Inc.	Options	490,456
7/17/2025	CRB0018_89, CRB0009_80	CLAND211254-4C	Task Contract #CLAND211254-3A-04, Real Estate "On-Call Services" MATOC-IDIQ, Task #04: Joint Development Planning Study, Southern Avenue (F08) & West Hyattsville (E07)	AECOM Technical Services, Inc.	Task Orders	366,616
7/21/2025	CIP0270_01	FQ2024	Infrastructure Construction Estimating Support Services	WSP USA, Inc.	Task Orders	6,724,638
7/22/2025	CIP0270_01	FQ2024	Data Management, Analysis & Application Maintenance	HNTB Corporation	Task Orders	720,523
7/22/2025	CIP0253	FRBIR222275	Electrician Labor Services and Scaffolding, Orders-For-Services (OFS)	C3M Power Systems, LLC	Task Orders	2,781,698
7/24/2025	CIP0063	FCMNT244291	6K HVAC Overhaul	MERAK North America	RFP	16,050,657
7/25/2025	CSSRP25041	CSSRP255204	Enterprise Surveillance System (ESS) Software Licensing	Schneider Electric Critical Systems, Inc.	RFP	953,628
7/31/2025	CIP0361_01	CIT01255112	SOA Services Operations and Maintenance	Deloitte Consulting, LLP	RFP	1,340,362
7/31/2025	CIP0059	FQ18149	General Engineering	Hatch Associates Consultants, Inc.	Task Orders	11,066,404
7/31/2025	CIP00256	FQ19148	General Engineering	Hatch Associates Consultants, Inc.	Task Orders	5,330,937
7/31/2025	CIP002511	FQ19196	General Engineering	Hatch Associates Consultants, Inc.	Task Orders	997,949
8/1/2025	CIP0127_04	FMTPD255078	MTPD Modification CBRN Detection Equipment	Safeware, Inc.	Contract Modifications -	
8/4/2025	CIP0375_01, CIP0356, CIP0341_03, CIP151_03, CIP0305_01	FQ2024	RBIR-0008_PM/CM Support for Rail Mechanical Infrastructure Rehabilitation	Gannett Fleming Engineers and Architects	Task Orders	15,877,475
8/8/2025	CSTIN26001	COBTR211208-W03	Extend Contract Expiration Date	Reflexions Data, LLC	Contract Modifications -	
8/11/2025	N/A	FRBIR244251	Sewer Ejector Replacement (PHASE A)	M&M Welding and Fabricators, Inc.	IFB	7,998,200
8/12/2025	CIP00005	FBMNT244195	Adding funds to cover tariff charges	First State Manufacturing	Contract Modifications	15,000
8/12/2025	CRB0009_80	CLAND211254-3D	Master Contract #CLAND211254-3D, Real Estate "On-Call Services" MATOC-IDIQ, Task #04: Joint Development Planning Studies (Montgomery & Prince George's Counties)	Vanasse Hangen Brustlin, Inc.(VHB)	Task Orders	365,613
8/14/2025	CIP0251_04	FRBIR244062-A	Cable Supply – IDIQ, Category (A) Traction Power Cables	Prysmian Group Specialty Cables, LLC	Task Orders	156,272
8/14/2025	CIP0252	FRBIR244062-B	Cable Supply – IDIQ, Category (B) Single Conductor Power Cables	Prysmian Group Specialty Cables, LLC	Task Orders	480,104
8/19/2025	CIP0270_01	238	Primavera Oracle P6 Cloud Solution	Loadspring Solutions, Inc.	RFP	62,912
8/19/2025	CIP0386_01	FIT01255030	Enterprise-Wide Video System	RL Controls, LLC	Contract Modifications -	
8/20/2025	CIP0253, CIP0251, CIP0024_39	FQ2024	WWPL-0003 - A/E Services for Wayside Work Planning Support	EXP US Services, Inc.	Task Orders	3,869,603
8/21/2025	CIP0063	FCMNT211163-RLJ	Change Pick up/Drop off location	Merak/Knorr	Contract Modifications -	
8/21/2025	CIP0246_02	FQ2024	CEGE0001 – Staff Support for Civil Projects	AECOM/STV JV	Task Orders	1,672,969
8/25/2025	CIP0005	FBMNT233447	Modification four (M004) is being issued to included WMATA Item ID: CORE906550271 to Contract ID: FBMNT233447 at a unit price of \$12,500.00 per the Price Sheet.	Johnson & Towers Baltimore, Inc.	Contract Modifications	28,000
8/28/2025	CIP0251_23	FQ18033	COSI-0002 CO#02 (CN#01) - Communications and Signaling (COSI) Quality Management	WSP USA	Contract Modifications	1,275,338
8/28/2025	CIP0099	CLAND211254-5B	Master Contract #CLAND211254-5B, Real Estate "On-Call Services" MATOC-IDIQ, Task #01: Joint Development Solicitation & Transportation Support	HR&A Advisors, Inc.	Contract Modifications	250,000
8/28/2025	CIP0099	CLAND211254-5C	Master Contract #CLAND211254-5C, Real Estate "On-Call Services" MATOC-IDIQ, Task #01: Joint Development Solicitation & Transportation Support	Jones Lang LaSalle Americas (JLL)	Contract Modifications	250,000
8/28/2025	CIP0099	CLAND211254-5D	Master Contract #CLAND211254-5D, Real Estate "On-Call Services" MATOC-IDIQ, Task #01: Joint Development Solicitation & Transportation Support	Redgate Real Estate Advisors	Contract Modifications	250,000

TABLE 7: PROCUREMENT ACTIONS

Date	CIP	Contract Number	Description	Vendor	Action Type	Amount
8/28/2025	CIP0099	CLAND211254-5E	Master Contract #CLAND211254-5E, Real Estate "On-Call Services" MATOC-IDIQ, Task #01: Joint Development Solicitation & Transportation Support	Hayat Brown, LLC	Contract Modifications	250,000
9/4/2025	CIP0255_20	COBTR255117-W11	Updating bus validator (reader) screens to include enhanced image and animation elements.	Cubic Transportation Systems, Inc.	Contract Modifications	127,924
9/5/2025	CIP0380, CIP0377_01	FQ2024	RAIL-0009_Staff Augmentation Support for COSI and MICC	Parsons Transportation Group, Inc.	Task Orders	2,952,444
9/9/2025	CIP0132	CELES25020	ELES Remote Monitoring	Knaq, Inc.	RFP	229,600
9/9/2025	CIP0152	FQ19151R-B	Rehabilitation of Parking Garages, Category B - 2 Parking Garages, Anacostia & New Carrollton, [MOD #5] Closeout - Reconciliation Credit	Stillwater Construction Group, LLC	Contract Modifications	-389,695
9/13/2025	CIP0252_05	FRBIR233208	Motor Control Center Design Revisions	Sarah Car Care, Inc.	Contract Modifications	43,357
9/13/2025	CIP0252_05	FRBIR233208	Automatic Transfer Scheme Matrix Update	Sarah Car Care, Inc.	Contract Modifications	21,816
9/13/2025	CIP0252_05	FRBIR233208	B02 Panelboard Discrepancies	Sarah Car Care, Inc.	Contract Modifications	19,000
9/15/2025	CIP0005	FBMNT233447	Exercise Option Year two (2) on Contract # FBMNT233447 for Allison Transmission Capital Parts	Johnson & Towers Baltimore, Inc.	Options	746,986
9/17/2025	CIP0253_04	FIRPG211191	Additional Structural Analysis/Reinforcement	C3M Power Systems, LLC	Contract Modifications	250,000
9/17/2025	CIP0024_25	CBTRA255187	Fall Shuttle Bus Services	Transportation Management Services, Inc.	Task Orders	929,558
9/17/2025	CIP0088_01	FQ2024	RBIR-0010_Station Entrance Canopies	DHA/RKK Joint Venture	Task Orders	1,180,696
9/18/2025	CIP0255_14	FCPPM200214-W01	Additional Year Warranty - Farebox System	Cubic Transportation Systems, Inc.	Contract Modifications	2,287,000
9/19/2025	CIP0252_04	FQ19218	Added Temperature Monitoring	Helix Electric, Inc.	Contract Modifications	142,712
9/22/2025	CIP0251_15	FQ2024	SSRP-0005_Train Control Rooms Upgrades Packaging, Bid, and Construction Services Support	Gannett Fleming Engineers and Architects	Task Orders	3,666,454
9/23/2025	CIP005	FBMNT211101	General Engineer Consultant and Other Services-Modification to Add Funds to Task Order 1	STV Incorporated	Contract Modifications	132,000
9/23/2025	CIP005	FBMNT211101	Bus Fleet Audits and Support	STV, Inc.	Task Orders	499,840
9/24/2025	CIP0253	FRBIR244062-A	Cable Supply – IDIQ, Category (A) Traction Power Cables	Prysmian Group Specialty Cables, LLC	Task Orders	929,415
9/24/2025	CIP0253	FRBIR244062-A	Cable Supply – IDIQ, Category (A) Traction Power Cables	Prysmian Group Specialty Cables, LLC	Task Orders	7,049
9/25/2025	CIP0099	FQ19172	REAL-001_Southern Avenue Environmental Site Assessment	Johnson, Mirmiran & Thompson, Inc.	Task Orders	300,933
9/26/2025	CIP0294_04	FQ2024	TRST-0003_Structural Engineering Staff Augmentation	WSP USA, Inc.	Task Orders	346,169
9/26/2025	CIP0270_02, CIP0197_03, CIP0170, CIP0247, CIP0255	FQ2024	ATOC-0002_(DHRK) Staff Augmentation and PM/CM Support Services for MATOC Program	DHA/RKK Joint Venture	Task Orders	1,056,057
9/26/2025	CIP0348	FQ2024	RBIR-0012_Aerial Structural Package A Construction Phase Services	Parsons Transportation Group, Inc.	Task Orders	39,415
9/29/2025	CIP0253_04	FIRPG211191	C99 Transformer Monitor Power Correction	C3M Power Systems, LLC	Contract Modifications	136,992
9/29/2025	CIP0253_04	FIRPG211191	Transfer Trip Alarm	C3M Power Systems, LLC	Contract Modifications	74,584
9/29/2025	CIP0253_04	FIRPG211191	Tie Breaker Design Revisions	C3M Power Systems, LLC	Contract Modifications	35,000