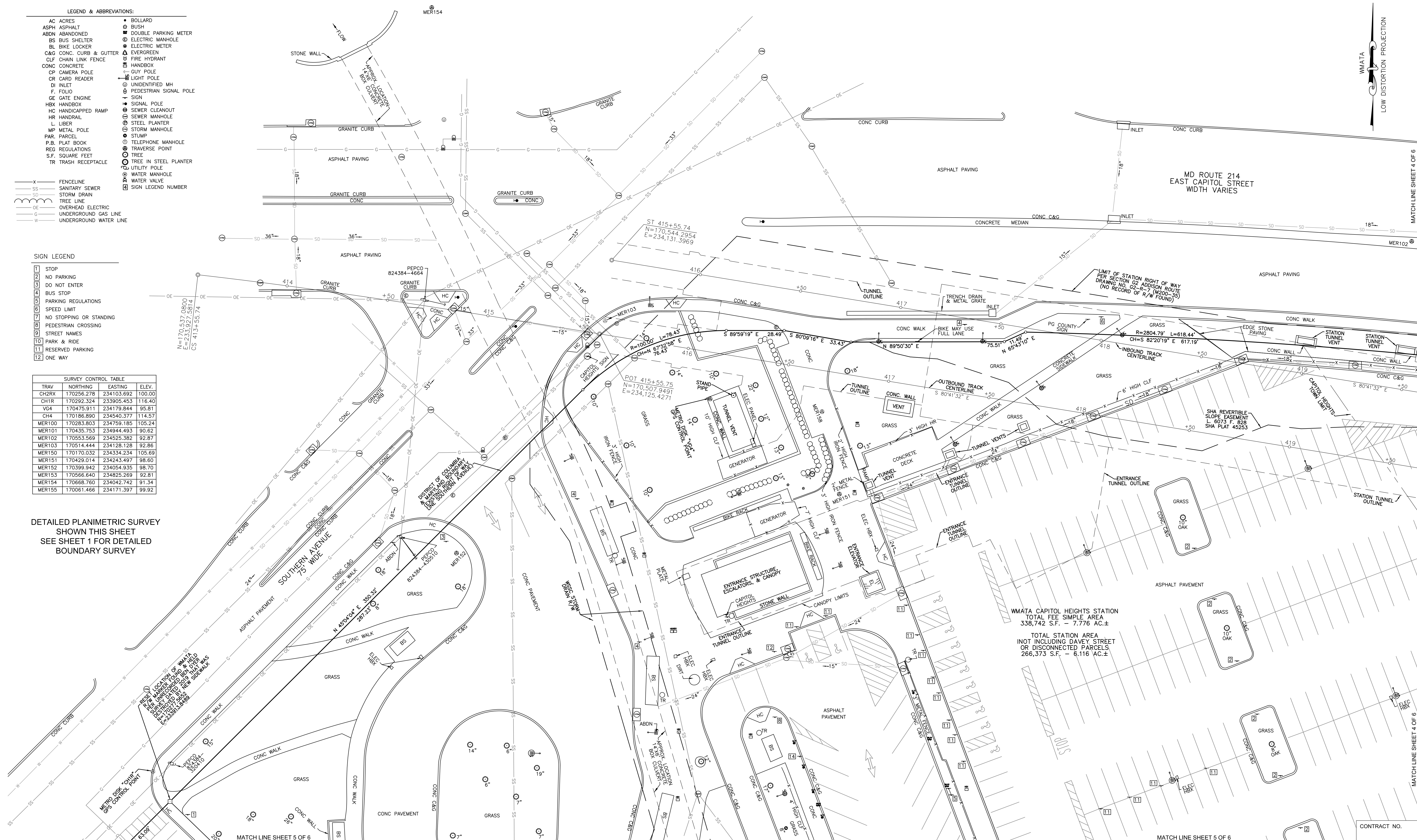


- LEGEND & ABBREVIATIONS:
- AC ACRES
 - ASPH ASPHALT
 - ABDN ABANDONED
 - BS BUS SHELTER
 - BL BIKE LOCKER
 - C&G CONC. CURB & GUTTER
 - CLF CHAIN LINK FENCE
 - CONC CONCRETE
 - CP CAMERA POLE
 - CR CARD READER
 - DI INLET
 - GE GATE ENGINE
 - HBX HANDBOX
 - HC HANDICAPPED RAMP
 - HR HANDRAIL
 - L LIBER
 - MP METAL POLE
 - PAR PARCEL
 - P.B. PLAT BOOK
 - REG REGULATIONS
 - S.F. SQUARE FEET
 - TR TRASH RECEPTACLE
 - BOLLARD
 - BUSH
 - DOUBLE PARKING METER
 - ELECTRIC MANHOLE
 - ELECTRIC METER
 - EVERGREEN
 - FIRE HYDRANT
 - HANDBOX
 - GUY POLE
 - LIGHT POLE
 - UNIDENTIFIED MH
 - PEDESTRIAN SIGNAL POLE
 - SIGN
 - SIGNAL POLE
 - SEWER CLEANOUT
 - SEWER MANHOLE
 - STEEL PLANTER
 - STORM MANHOLE
 - STUMP
 - TELEPHONE MANHOLE
 - TRAVERSE POINT
 - TREE
 - TREE IN STEEL PLANTER
 - UTILITY POLE
 - WATER MANHOLE
 - WATER VALVE
 - SIGN LEGEND NUMBER
- X FENCELINE
SS SANITARY SEWER
SD STORM DRAIN
OE TREE LINE
OE OVERHEAD ELECTRIC
G UNDERGROUND GAS LINE
W UNDERGROUND WATER LINE

- SIGN LEGEND
- STOP
 - NO PARKING
 - DO NOT ENTER
 - BUS STOP
 - PARKING REGULATIONS
 - SPEED LIMIT
 - NO STOPPING OR STANDING
 - PEDESTRIAN CROSSING
 - STREET NAMES
 - PARK & RIDE
 - RESERVED PARKING
 - ONE WAY

TRAV	NORTHING	EASTING	ELEV.
CH2RX	170256.278	234103.692	100.00
CH1R	170292.324	233905.453	116.40
VG4	170475.911	234179.844	95.81
CH4	170186.890	234540.377	114.57
MER100	170283.803	234759.185	105.24
MER101	170435.753	234944.493	90.62
MER102	170553.569	234525.382	92.87
MER103	170514.444	234128.128	92.86
MER150	170170.032	234334.234	105.69
MER151	170429.014	234243.497	98.60
MER152	170399.942	234054.935	98.70
MER153	170566.640	234825.269	92.81
MER154	170668.760	234042.742	91.34
MER155	170061.466	234171.397	99.92

DETAILED PLANIMETRIC SURVEY
SHOWN THIS SHEET
SEE SHEET 1 FOR DETAILED
BOUNDARY SURVEY



REFERENCE DRAWINGS			REVISIONS		
NUMBER	TITLE	DATE	NUM	DESCRIPTION	

DRAWN IL 10/17/2022
CHECKED TY 10/20/2022
APPROVED TY 10/21/2022



WASHINGTON METROPOLITAN AREA TRANSIT AUTHORITY

OFFICE OF CAPITAL PROGRAM DELIVERY

ENGINEERING AND ARCHITECTURE

SUBMITTED BY:

DATE

WMATA APPROVED

DATE

ALTA / NSPS LAND TITLE SURVEY CAPITOL HEIGHTS METRO STATION LOCATED AT 6005 EAST CAPITOL STREET TOWN OF CAPITOL HEIGHTS, MARYLAND		
SCALE 1" = 20'	DRAWING NO. SR#9609	SHEET NO. 3 OF 6

MATCH LINE SHEET 3 OF 6

MATCH LINE SHEET 3 OF 6

MATCH LINE SHEET 6 OF 6

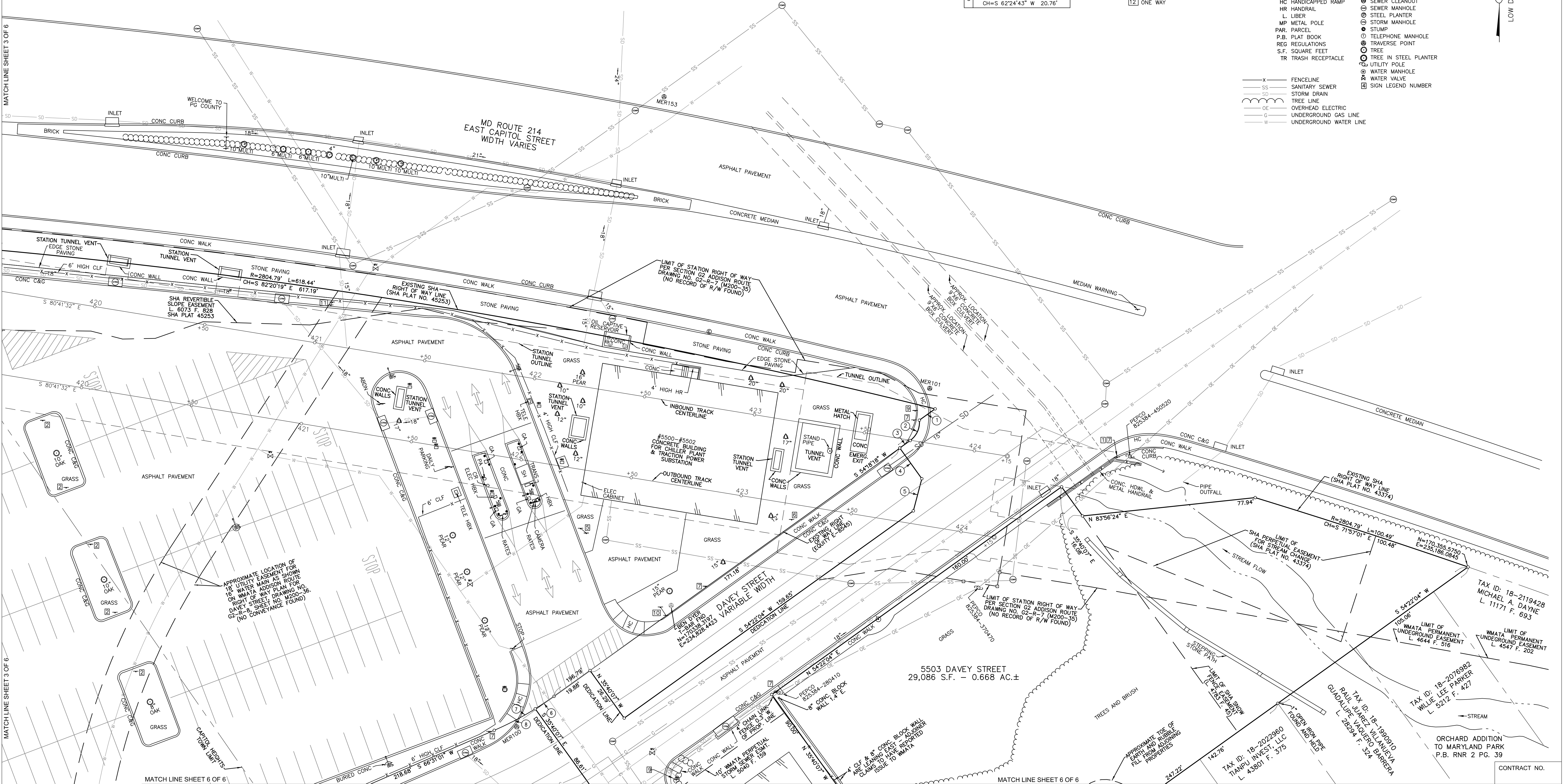
LINE AND CURVE TABLE		
1	S 54°20'39" W	8.72'
2	R=10.00' L=10.49' Δ=60°07'16"	
	CH=S 24°14'40" W	10.02'
3	S 54°18'18" W	5.73'
4	S 35°39'21" E	16.97'
5	S 14°50'37" W	14.94'
6	R=145.00' L=10.13' Δ=04°00'06"	
	CH=S 56°18'21" W	10.13'
7	R=145.00' L=30.91' Δ=12°12'44"	
	CH=S 60°24'40" W	30.85'
8	R=145.00' L=20.78' Δ=08°12'38"	
	CH=S 62°24'43" W	20.76'

SIGN LEGEND

- 1 STOP
- 2 NO PARKING
- 3 DO NOT ENTER
- 4 BUS STOP
- 5 PARKING REGULATIONS
- 6 SPEED LIMIT
- 7 NO STOPPING OR STANDING
- 8 PEDESTRIAN CROSSING
- 9 STREET NAMES
- 10 PARK & RIDE
- 11 RESERVED PARKING
- 12 ONE WAY

LEGEND & ABBREVIATIONS:

- AC ACRES
- ASPH ASPHALT
- ABDN ABANDONED
- BS BUS SHELTER
- BL BIKE LOCKER
- C&G CONC. CURB & GUTTER
- CLF CHAIN LINK FENCE
- CONC CONCRETE
- CP CAMERA POLE
- CR CARD READER
- DI INLET
- F. FOLIO
- GE GATE ENGINE
- HBX HANDBOX
- HC HANDICAPPED RAMP
- HR HANDRAIL
- L LIBER
- MP METAL POLE
- PAR. PARCEL
- P.B. PLAT BOOK
- REG REGULATIONS
- S.F. SQUARE FEET
- TR TRASH RECEPTACLE
- BOLLARD
- DOUBLE PARKING METER
- ELECTRIC MANHOLE
- ELECTRIC METER
- EVERGREEN
- FIRE HYDRANT
- HANDBOX
- GUY POLE
- LIGHT POLE
- UNIDENTIFIED MH
- PEDESTRIAN SIGNAL POLE
- SIGN
- SIGNAL POLE
- SEWER CLEANOUT
- SEWER MANHOLE
- STEEL PLANTER
- STORM MANHOLE
- STUMP
- TELEPHONE MANHOLE
- TRAVERSE POINT
- TREE
- TREE IN STEEL PLANTER
- UTILITY POLE
- WATER MANHOLE
- WATER VALVE
- SIGN LEGEND NUMBER
- FENCELINE
- SANITARY SEWER
- STORM DRAIN
- TREE LINE
- OVERHEAD ELECTRIC
- UNDERGROUND GAS LINE
- UNDERGROUND WATER LINE



DRAWN		
IL	10/17/2022	DATE
CHECKED	TY	10/20/2022
APPROVED	TY	10/21/2022

REFERENCE DRAWINGS		REVISIONS	
NUMBER	TITLE	DATE	DESCRIPTION



WASHINGTON METROPOLITAN AREA TRANSIT AUTHORITY

OFFICE OF CAPITAL PROGRAM DELIVERY

ENGINEERING AND ARCHITECTURE

SUBMITTED BY:

DATE

WMATA APPROVED

DATE

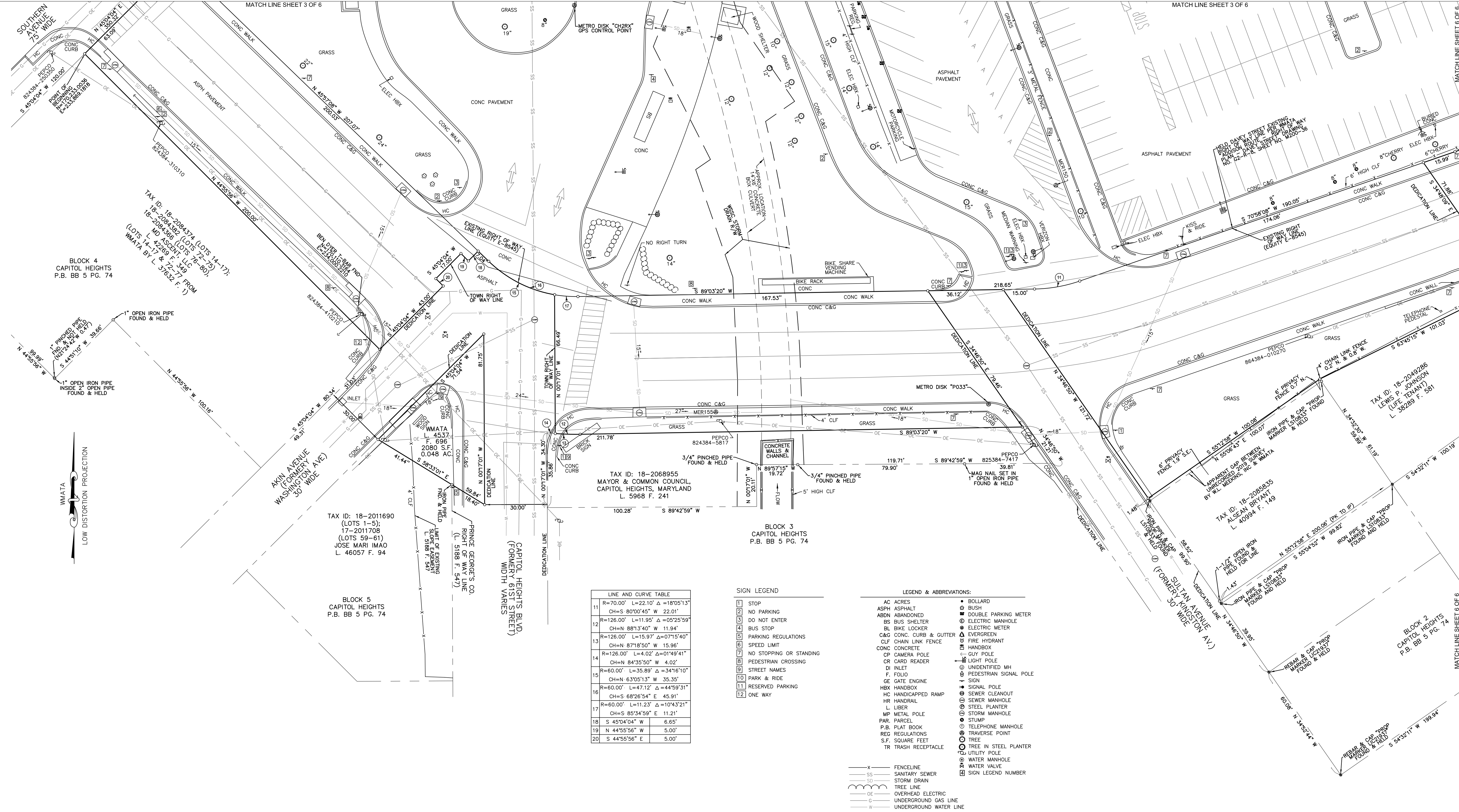
ALTA / NSPS LAND TITLE SURVEY
CAPITOL HEIGHTS METRO STATION
LOCATED AT 6005 EAST CAPITOL STREET
TOWN OF CAPITOL HEIGHTS, MARYLAND

SCALE
1" = 20'

DRAWING NO.
SR#9609

SHEET NO.
4 OF 6

CONTRACT NO.



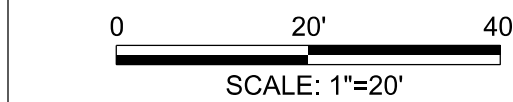


LEGEND & ABBREVIATIONS:	
AC ACRES	• BOLLARD
ASPH ASPHALT	⊗ BUSH
ABDN ABANDONED	⊗ DOUBLE PARKING METER
BS BUS SHELTER	⊗ ELECTRIC MANHOLE
BL BIKE LOCKER	⊗ ELECTRIC METER
C&G CONC. CURB & GUTTER	⊗ EVERGREEN
CLF CHAIN LINK FENCE	⊗ FIRE HYDRANT
CONC CONCRETE	⊗ HANDBOX
CP CAMERA POLE	⊗ GUY POLE
CR CARD READER	⊗ LIGHT POLE
DI INLET	⊗ UNIDENTIFIED MH
F. FOLIO	⊗ PEDESTRIAN SIGNAL POLE
GE GATE ENGINE	⊗ SIGN
HBX HANDBOX	⊗ SIGNAL POLE
HC HANDICAPPED RAMP	⊗ SEWER CLEANOUT
HR HANDRAIL	⊗ SEWER MANHOLE
L LIBER	⊗ STEEL PLANTER
MP METAL POLE	⊗ STORM MANHOLE
PAR. PARCEL	⊗ STUMP
P.B. PLAT BOOK	⊗ TELEPHONE MANHOLE
REG REGULATIONS	⊗ TRAVERSE POINT
S.F. SQUARE FEET	⊗ TREE
TR TRASH RECEPTACLE	⊗ TREE IN STEEL PLANTER
	⊗ UTILITY POLE
	⊗ WATER MANHOLE
	⊗ WATER VALVE
	⊗ SIGN LEGEND NUMBER

— X —	FENCELINE
— SS —	SANITARY SEWER
— SD —	STORM DRAIN
— —	TREE LINE
— OE —	OVERHEAD ELECTRIC
— G —	UNDERGROUND GAS LINE
— W —	UNDERGROUND WATER LINE

SIGN LEGEND	
1	STOP
2	NO PARKING
3	DO NOT ENTER
4	BUS STOP
5	PARKING REGULATIONS
6	SPEED LIMIT
7	NO STOPPING OR STANDING
8	PEDESTRIAN CROSSING
9	STREET NAMES
10	PARK & RIDE
11	RESERVED PARKING
12	ONE WAY

CURVE TABLE	
8	R=320.00' L=24.86' Δ=04°27'06" CH=S 68°44'36" W 24.86'
9	R=320.00' L=15.09' Δ=02°42'07" CH=S 69°37'04" W 15.09'
10	R=320.00' L=9.77' Δ=01°44'59" CH=S 67°23'31" W 9.77'



	REFERENCE DRAWINGS		REVISIONS	
	NUMBER	TITLE	DATE	NUM DESCRIPTION
DRAWN	IL	10/17/2022		
		DATE		
CHECKED	TY	10/20/2022		
		DATE		
APPROVED	TY	10/21/2022		
		DATE		



WASHINGTON METROPOLITAN AREA TRANSIT AUTHORITY

OFFICE OF CAPITAL PROGRAM DELIVERY

ENGINEERING AND ARCHITECTURE

SUBMITTED BY: _____

DATE _____

WMATA APPROVED _____

DATE _____

CONTRACT NO. _____

ALTA / NSPS LAND TITLE SURVEY
CAPITOL HEIGHTS METRO STATION
LOCATED AT 6005 EAST CAPITOL STREET
TOWN OF CAPITOL HEIGHTS, MARYLAND

SCALE
1" = 20'

DRAWING NO.
SR#9609

SHEET NO.
6 OF 6