

# Metro Procurement Opportunities

Quarterly Newsletter

February 2022 - Issue 1



## Welcome

Thank you for your interest in Procurement Opportunities with the Washington Metropolitan Area Transit Authority (WMATA/Metro). This quarterly newsletter offers a forward-looking view of potential procurement opportunities and guidelines for working with Metro.

## OVERVIEW

This newsletter provides Metro's current and prospective business partners, including consultants, contractors, manufacturers, vendors, and suppliers, with information on Metro's procurement plans for architectural, engineering, and construction work.

Please confirm your interest in receiving future Procurement Opportunities newsletter issues [here](#).

## Procurement & Contracting

To participate in future procurement solicitations, please register or update your vendor information on the [Metro Supplier Portal](#). For information on active solicitations and recent awards, please visit the [Metro Procurement Opportunities](#) website.



## Small Business & Socio-Economic Programs

Metro is one of the District of Columbia's official certification agencies for the Disadvantaged Business Enterprise (DBE) Program and the Small Business Enterprise (SBE) Program. The new Small Business Program (SBP), Micro Business Program (MBP) and Minority Business Enterprise (MBE) Program are Metro-led initiatives.

For additional information on eligibility and programs, visit the [Small Business Programs Office](#) site. To view the SBPO Quarterly Newsletters, visit the [SBPO News page](#).

## NOTE FROM METRO'S CHIEF PROCUREMENT OFFICER

### New Opportunities for a New Year

The support of dedicated funding from our jurisdictional partners in recent years has enabled Metro's **Capital Improvement Program** to grow into one of the largest programs in the U.S. transit industry. With numerous projects in execution and development, our procurement department and project offices are dedicated to ensuring Metro's architectural, engineering, and construction needs are met. As our business partners, you play a vital role. Together we support Metro's mission and efforts to deliver a capital program that provides the foundation for safe and reliable service in the National Capital Region.

This newsletter is a new initiative and part of our broader goal to ensure our partners' awareness and active participation in Metro's procurement opportunities. We encourage you to **subscribe** to receive future newsletters, visit our **website**, and reach out to us with any questions.

Sincerely,  
*Suzette Moore*, Chief Procurement Officer



### IN THIS ISSUE

The February 2022 newsletter highlights several prospective procurement opportunities, with additional information on the anticipated delivery method, potential contract value, planned solicitation timeframe (season/year), and SBPO participation expectations provided below.

AC Switchgear Rehab - 9 Metrorail Stations
Electrical Contractors Multiple Award Task Order Contract (MATOC)
General Contractors Multiple Award Task Order Contract (MATOC)
Metrobus Shelter Replacement - Design-Build +/- 156 Shelters
Structural Rehabilitation - Package B
Systemwide Edge Lighting Replacement

## ARCHITECTURAL, ENGINEERING, AND CONSTRUCTION OPPORTUNITIES

### AC Switchgear Rehabilitation - 9 Metrorail Stations

Supply, install, test, and commission alternating current (AC) switchgears and rehabilitate AC power rooms in nine (9) Metrorail stations

**Anticipated Delivery Method:** Design-Bid-Build

**Potential Contract Value\*:** \$55M-\$65M

**Planned Solicitation:** Spring 2022

**SBPO Participation\*\*:** Disadvantaged Business Enterprise



### Electrical Contractors MATOC

Support the ongoing capital program through competitive task orders for electrical work, including design preparation or completion, electrical repairs, fire alarm and detection systems, access control and security systems, lighting, and fare vending, among other activities

**Anticipated Delivery Method:** Multiple Award Task Orders

**Potential Contract Value\*:** up to \$15M per task order

**Planned Solicitation:** Winter/Spring 2022

**SBPO Participation\*\*:** Disadvantaged Business Enterprise

### General Contractors MATOC

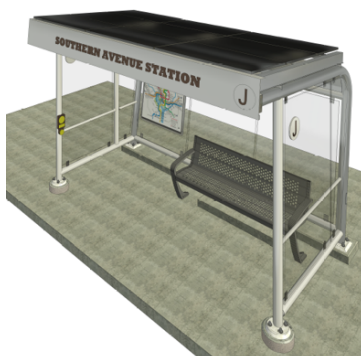
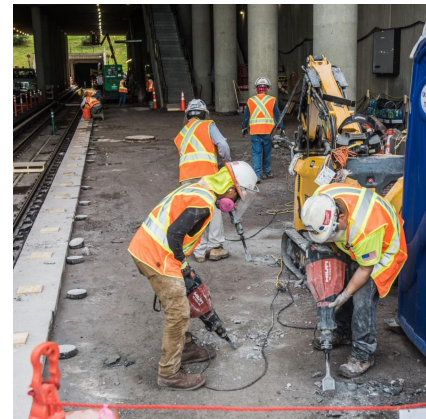
Support the ongoing capital program through competitive task orders for general construction services, including repair, rehabilitation, replacement, and demolition work, among other activities

**Anticipated Delivery Method:** Multiple Award Task Orders

**Potential Contract Value\*:** up to \$5M per task order

**Planned Solicitation:** Summer 2022

**SBPO Participation\*\*:** Disadvantaged Business Enterprise



### Metrobus Shelter Replacement - Design-Build +/- 156 Shelters

Replace 156 Metro-owned bus shelters at 18 locations, including site design, shelter fabrication, and construction

**Anticipated Delivery Method:** Design-Build

**Potential Contract Value\*:** \$55M-\$65M

**Planned Solicitation:** Winter/Spring 2022

**SBPO Participation\*\*:** Disadvantaged Business Enterprise



### Structural Rehabilitation - Package B

Design and construction for rehabilitation of fifteen (15) Aerial Structures and six (6) Pedestrian Bridges

**Anticipated Delivery Method:** Design-Build

**Potential Contract Value\*:** \$50M-\$65M

**Planned Solicitation:** Winter/Spring 2022

**SBPO Participation\*\*:** Yes, to be defined



### Systemwide Edge Lighting Replacement

Remove existing platform edge lighting, associated infrastructure and control panels and replace with LED-compatible fixtures and control panels at 49 stations

**Anticipated Delivery Method:** Design-Bid-Build

**Potential Contract Value\*:** \$55M-\$65M

**Planned Solicitation:** Winter/Spring 2022

**SBPO Participation\*\*:** Yes, to be defined

\* Estimates subject to change

\*\* Small Business Program Office (SBPO) participation includes DBE/SBE/MBP/MBE initiatives

### Disclaimer

This newsletter is published for informational purposes only and is based on good faith estimates subject to change, delay, or removal. Metro is not liable for the content included or omitted in this newsletter, and any reliance on procurement opportunities planned at this time that may or may not come to fruition. The information provided may evolve over time as plans develop.

## PROCUREMENT ENGAGEMENT EVENTS

### March 2022\*

#### Meet the Primes

Showcase of opportunities for local businesses to support prime contractors

### April 2022\*

#### Making Equity a Business Partnership

Learn about opportunities to do business with Metro

### Spring/Summer 2022\*

#### Industry Outreach Day

Industry engagement event with Metro Procurement representatives

*\*Dates forthcoming*

For additional information on planned procurement engagement events, including registration links when available, please visit [Metro Procurement Opportunities](#). For events related to active solicitations, including pre-proposal conferences, please visit the [Supplier Portal](#).

### Questions?

For any questions or comments about upcoming opportunities, or assistance with vendor registration, please reach out via one of the channels below. We welcome and encourage your engagement.

## CONTACT US

**Internal Business Operations -  
Office of Procurement & Materials**

See Active Solicitations for contact details  
[PRMT\\_SupplierSupport@wmata.com](mailto:PRMT_SupplierSupport@wmata.com)

**Small Business Programs Office**

202.962.6493  
[SBPOHotline@wmata.com](mailto:SBPOHotline@wmata.com)

**Office of Capital Program Delivery -  
Project Development & Implementation  
Planning**

*Commercial Innovation & Market Outreach*  
202.962.5760  
[MetroProcurementOutreach@wmata.com](mailto:MetroProcurementOutreach@wmata.com)

**Washington Metropolitan Area Transit Authority**  
Procurement & Materials / Project Development & Implementation Planning



---

Visit Us



WMATA | 600 Fifth St., NW, Washington, DC 20001

[Unsubscribe\\_email@wmata.com](mailto:Unsubscribe_email@wmata.com)

[Update Profile](#) | [Our Privacy Policy](#) | [About Constant Contact](#)

Sent by [metroprocurementoutreach@wmata.com](mailto:metroprocurementoutreach@wmata.com)