



WMATA
F05 - NAVY YARD
AS BUILT - REVISION-B 1.0
17JAN13



THE POWER IN WIRELESS®

DRAWING INDEX

SHEET NUMBER	SHEET ID	DRAWING TITLE	DRAWING DESCRIPTION	REVISION HISTORY							
				20APR10	13MAY10	25JUN10	11FEB11	23MAR12	02OCT12	17JAN13	
				AS BUILT	A	B	C	AS BUILT	AS BUILT	AS BUILT	
01	0.00	COVER SHEET	DESIGN PACKAGE COVER SHEET	●	●	●	●	●	●	●	
02	1.00	DRAWING INDEX	LIST OF ALL STATION DRAWINGS	●	●	●	●	●	●	●	
03	2.00	STATION LAYOUT - CWS + WAS	OVERALL STATION LAYOUT FOR RF DESIGN - CWS + WAS	●							
04	2.01	ENLARGED PLATFORM RF DESIGN - CWS	RF DESIGN INCLUDING ENCLOSURE, ANTENNAS, ELECTRICAL, FIBER, RF CABLES - CWS	●		●		●		●	
05	2.02	ENLARGED MEZZANINE RF DESIGN - CWS	RF DESIGN INCLUDING ENCLOSURE, ANTENNAS, ELECTRICAL, FIBER, RF CABLES - CWS	●				●			
06	2.03	ENLARGED PLATFORM RF DESIGN - CWS	RF DESIGN INCLUDING ENCLOSURE, ANTENNAS, ELECTRICAL, FIBER, RF CABLES - CWS	●		●		●		●	
07	2.04	ENLARGED MEZZANINE RF DESIGN - CWS	RF DESIGN INCLUDING ENCLOSURE, ANTENNAS, ELECTRICAL, FIBER, RF CABLES - CWS	●			●	●			
08	2.06-RF	BLOCK DIAGRAM - CWS	BLOCK DIAGRAM				●	●			
09	3.01	ENLARGED PLATFORM RF DESIGN - WAS	RF DESIGN INCLUDING ENCLOSURE, ANTENNAS, ELECTRICAL, FIBER, RF CABLES - WAS	●	●	●		●		●	
10	3.02	ENLARGED MEZZANINE RF DESIGN - WAS	RF DESIGN INCLUDING ENCLOSURE, ANTENNAS, ELECTRICAL, FIBER, RF CABLES - WAS	●	●			●			
11	3.03	ENLARGED PLATFORM RF DESIGN - WAS	RF DESIGN INCLUDING ENCLOSURE, ANTENNAS, ELECTRICAL, FIBER, RF CABLES - WAS	●	●	●		●		●	
12	3.04	ENLARGED MEZZANINE RF DESIGN - WAS	RF DESIGN INCLUDING ENCLOSURE, ANTENNAS, ELECTRICAL, FIBER, RF CABLES - WAS	●	●		●	●			
13	3.06-RF	BLOCK DIAGRAM - WAS	BLOCK DIAGRAM				●	●			
14	4.00	ENCLOSURE LOCATION - CWS	ENCLOSURE LOCATION PER EXISTING SITE CONDITIONS - CWS	●				●		●	
15	5.00	ELECTRICAL REQUIREMENTS - CWS	ELECTRICAL ROOM DETAILS, CONNECTION DIAGRAM, BILL OF MATERIALS	●	●			●	●	●	
16	6.00	A&E DETAILS	STRUCTURAL MOUNTING DETAILS FOR ANTENNAS, COAXIAL CABLE, FIBER	●	●						
17	7.00	PICTORIAL VIEWS - CWS	EQUIPMENT INSTALLATION PHOTOS FOR HEIGHT AND LOCATION REFERENCING - CWS	●	●	●		●			
18	7.01	PICTORIAL VIEWS - CWS	EQUIPMENT INSTALLATION PHOTOS FOR HEIGHT AND LOCATION REFERENCING - CWS	●			●	●			

CHANGE CONTROL DOCUMENT

F05								NAVY YARD								WASHINGTON D.C.							
RELEASE	INTERNAL REVISION	SHEET	DATE	INITIATOR	DEPT	TRANSMIT	REVISION REQUEST																
INITIAL RELEASE		ALL	04-20-10	JESSE KOPELMAN	RF	CCD	INITIAL RELEASE																
A		3.01, 3.02, 3.03, 3.04, 5.00, 6.00, 7.00	05-13-10	JESSE KOPELMAN	RF	MARKED DWGS	WAS REROUTED, FIBER REROUTED, ELECTRICAL DESIGN REVISED, DETAIL 16 ADDED TO 6.00 DETAILS 01 AND 02 ON 6.00 REVISED, PICTURES 02 AND 03 ON 7.00 REVISED																
B		2.01, 2.03, 3.01, 3.03, 7.00	06-25-10	JESSE KOPELMAN	RF	MARKED DWGS	FIBER REROUTED, PICTURE 02 ON 7.00 REVISED																
C		0.00, 2.04, 2.06-RF, 2.07-RF, 3.04, 3.06-RF, 3.07-RF, 7.01	11-21-11	LARRY WASHINGTON	CARRIER TEAM	EMAIL	STATION CODE ADDED; CALL OUT CHANGED; SHEETS 2.06-RF, 2.07-RF, 3.06-RF, AND 3.07-RF ADDED; BBU PICTURES CHANGED.																
AS BUILT INITIAL RELEASE	1.0	2.01, 2.02, 2.03, 2.04, 2.06RF, 3.01, 3.02, 3.03, 3.04, 3.06RF, 4.00, 5.00, 7.00, 7.01	03-23-12	LARRY WASHINGTON	CARRIER TEAM	HAND CARRY	CWS AND WAS CABLES REROUTED, CABLE TYPES AND LENGTHS REVISED, ENCLOSURE LOCATIONS ADJUSTED AND AS BUILT PHOTOS INSERTED, ELECTRICAL CABLES REROUTED, AS BUILT PHOTOS INSERTED.																
AS BUILT REVISION-A	1.0	5.00	10-02-12	LARRY WASHINGTON	CARRIER TEAM	HAND CARRY	HYDROGEN SENSOR NOTE ADDED IN SHEET 5.00. BBU ADDED IN ONE LINE DIAGRAM IN SHEET 5.00.																
AS BUILT REVISION-B	1.0	2.01, 2.03, 3.01, 3.03, 4.00, 5.00	01-17-13	LARRY WASHINGTON	CARRIER TEAM	HAND CARRY	WALL CONFIGURATION UPDATED IN SHEETS 2.01, 2.03, 3.01, 3.03, 4.00 & 5.00. DIMENSIONS & PICTURES UPDATED IN SHEET 4.00.																



REV	DESCRIPTION	DATE
AS BUILT INITIAL RELEASE		23MAR12
AS BUILT REVISION-A		02OCT12
AS BUILT REVISION-B		17JAN13

PROPRIETARY

DESIGNED :	JK
DRAWN :	RL
CHECKED :	JK
APPROVED :	RD
ISSUED :	20APR10
FULL SIZE ARCH D 24x36 DRAWING	



WMATA - WCI

STATION NAME

NAVY YARD

DRAWING TITLE

DRAWING INDEX

REFERENCE MAP

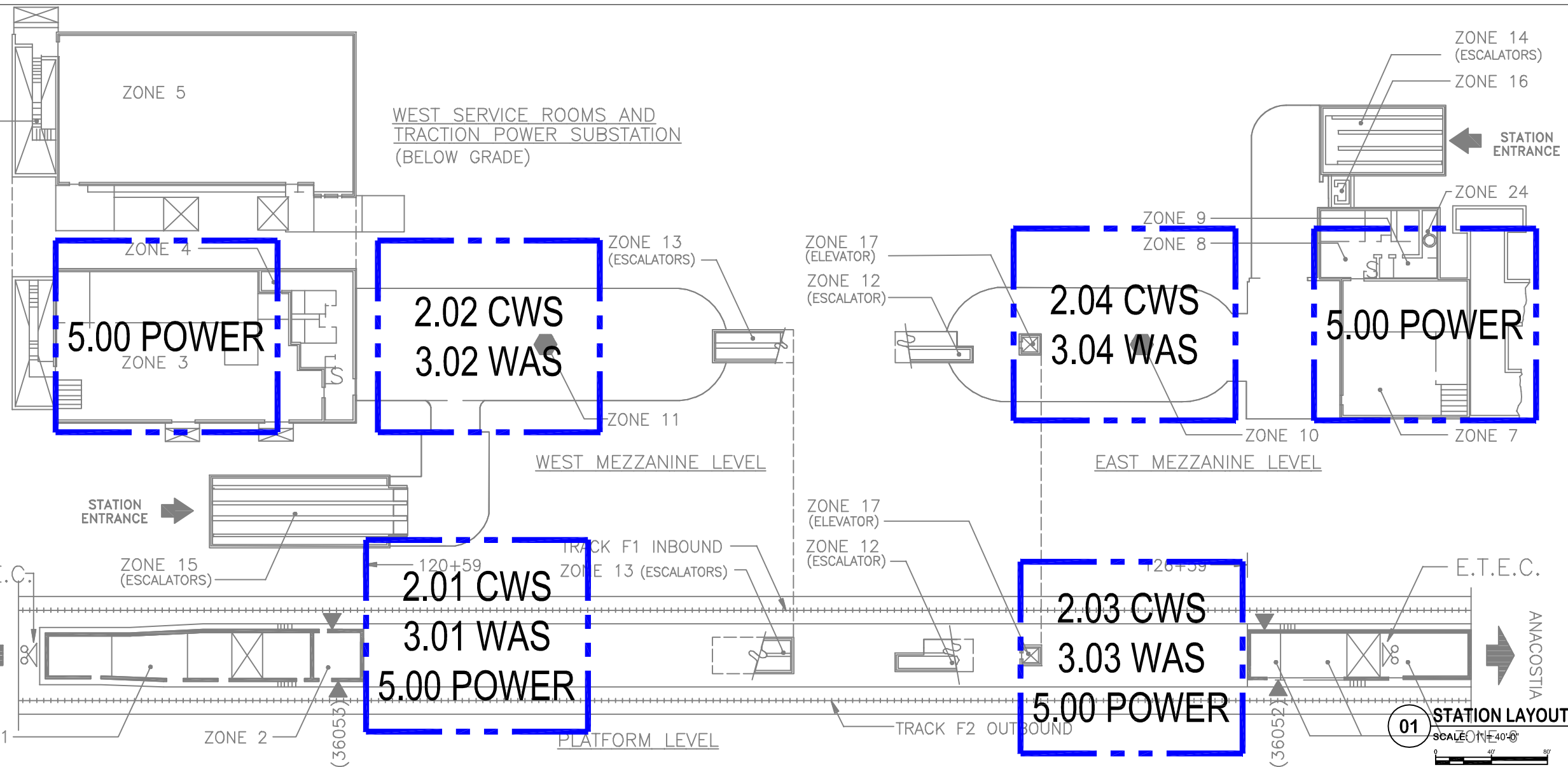
NONE

SHEET NUMBER

1.00



LADDER FROM STREET



REV	DESCRIPTION	DATE
AS BUILT INITIAL RELEASE		23MAR12
AS BUILT REVISION-A		02OCT12
AS BUILT REVISION-B		17JAN13

PROPRIETARY

DESIGNED:	JK
DRAWN:	RL
CHECKED:	JK
APPROVED:	RD
ISSUED:	20APR10

FULL SIZE ARCH D 24x36 DRAWING



WMATA - WCI

STATION NAME

NAVY YARD

DRAWING TITLE

STATION LAYOUT

CWS + WAS

REFERENCE MAP

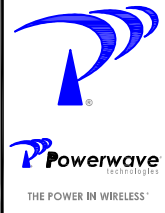
F05.a

SHEET NUMBER

2.00

CWS + WAS

03 OF 18



REV	DESCRIPTION	DATE
1	AS BUILT INITIAL RELEASE	23MAR12
2	AS BUILT REVISION-A	02OCT12
3	AS BUILT REVISION-B	17JAN13

PROPRIETARY

DESIGNED:	JK
DRAWN:	RL
CHECKED:	JK
APPROVED:	RD
ISSUED:	20APR10

FULL SIZE ARCH D 24x36 DRAWING



WMATA - WCI

STATION NAME

NAVY YARD

DRAWING TITLE

ENLARGED PLATFORM RF DESIGN

CWS

REFERENCE MAP

F05.a

SHEET NUMBER

2.01
CWS

04 OF 18

SYMBOLS LEGEND

NOT ALL SYMBOLS SHOWN MAY BE REQUIRED

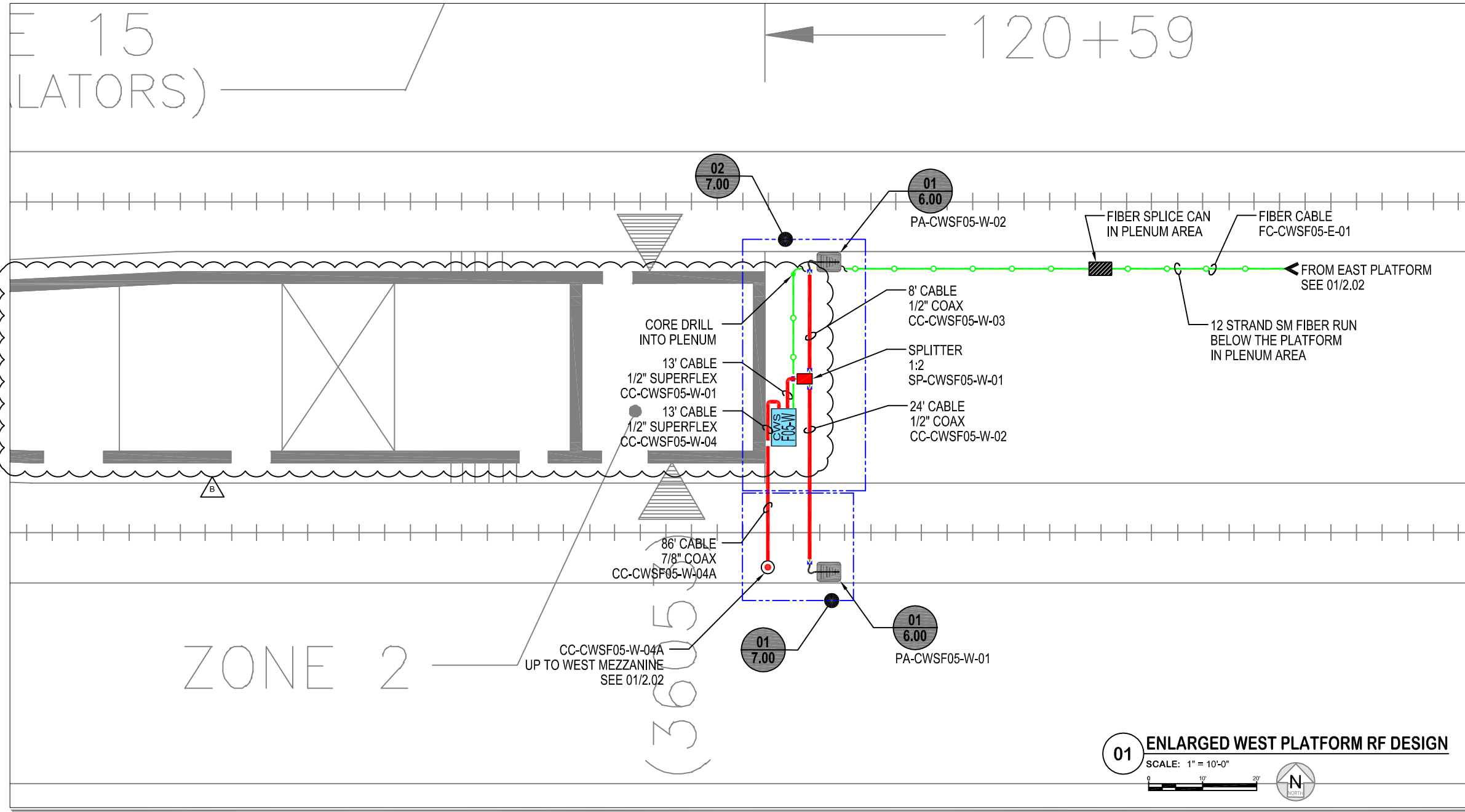
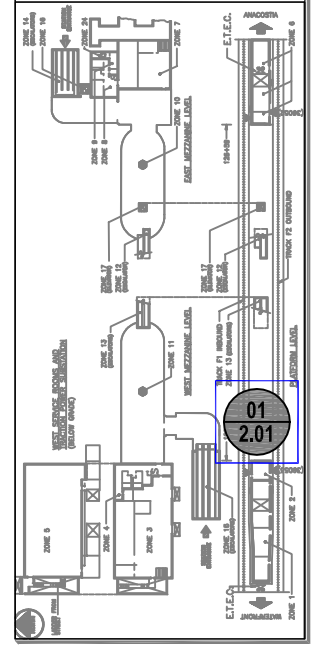
	CONNECTOR, MALE TO FEMALE
	JUMPER ASSEMBLY, MALE/MALE
	SOLID SHIELD COAXIAL CABLE CABLE SIZE AS NOTED
	FIBER OPTIC CABLE
	ITEMS COLORED RED PROVIDER: POWERWAVE
	ITEMS COLORED LT. GREEN PROVIDER: CLIENT / BY OTHERS
	ITEMS COLORED LT. BLUE FUTURE INSTALLATION
	CORE DRILLING REQUIRED
	CABLE UP / CABLE DOWN
	TO / FROM CABLE "TO" AND "FROM" DESTINATION

COMPONENT IDENTIFICATION

PA - PANEL ANTENNA	ENCLOSURE DIRECTION
CA - OMNI ANTENNA	INCREMENTAL NUMBERING
CC - COAXIAL CABLE	SYSTEM (CWS)
RC - RADIATING CABLE	REMOTE LOCATION
FC - FIBER CABLE	ENCLOSURE NUMBER
SP - SPLITTER	
DC - DIRECTIONAL COUPLER	

	OMNI ANTENNA
	PANEL ANTENNA
	COUPLER, DIRECTIONAL (COUPLED PORT LABELED)
	SPLITTER / COMBINER
	REPEATER
	CWS - REMOTE LOCATION COMPONENT ENCLOSURE (RHG - REMOTE HUB GROUP)
	BBU - BATTERY BACKUP UNIT
	BSH - BASE STATION HOTEL

KEY PLAN



01 ENLARGED WEST PLATFORM RF DESIGN
SCALE: 1" = 10'-0"
0 10 20' N

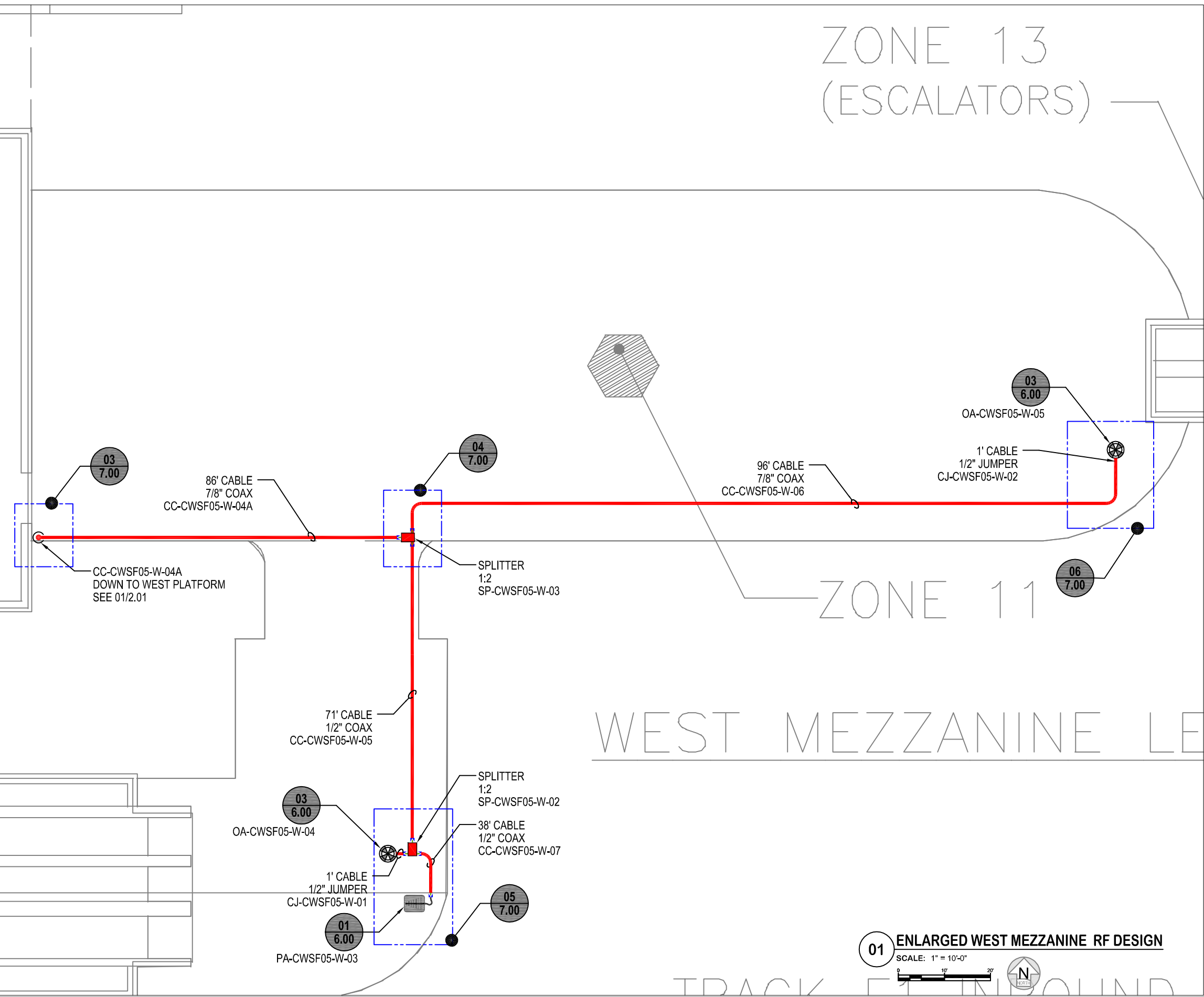
← WATERFRONT

ANACOSTIA →

ZONE 13 (ESCALATORS)

ZONE 11

WEST MEZZANINE LEVEL



SYMBOLS LEGEND

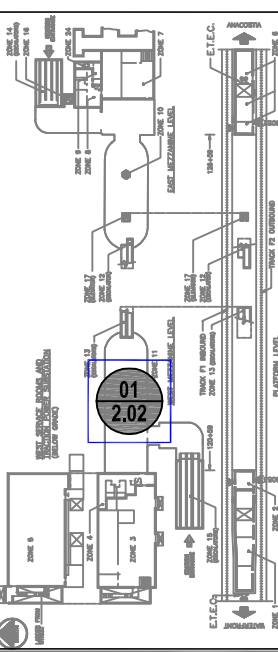
NOT ALL SYMBOLS SHOWN MAY BE REQUIRED

	CONNECTOR, MALE TO FEMALE
	JUMPER ASSEMBLY, MALE/MALE
	SOLID SHIELD COAXIAL CABLE CABLE SIZE AS NOTED
	FIBER OPTIC CABLE
	ITEMS COLORED RED PROVIDER: POWERWAVE
	ITEMS COLORED LT. GREEN PROVIDER: CLIENT / BY OTHERS
	ITEMS COLORED LT. BLUE FUTURE INSTALLATION
	CORE DRILLING REQUIRED
	CABLE UP / CABLE DOWN
	TO / FROM CABLE "TO" AND "FROM" DESTINATION

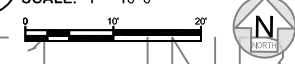
COMPONENT IDENTIFICATION

PA - PANEL ANTENNA	EA - OMNI ANTENNA	ENCL - ENCLOSURE	DIR - DIRECTION
CC - COAXIAL CABLE	RC - RADIATING CABLE	FC - FIBER CABLE	INC - INCREMENTAL
SP - SPLITTER	DC - DIRECTIONAL COUPLER	PA-CWSF###-#-01	SYSTEM (CWS)
			REMOTE LOCATION
			ENCLOSURE NUMBER
	OMNI ANTENNA		
	PANEL ANTENNA		
	COUPLER, DIRECTIONAL (COUPLED PORT LABELED)		
	SPLITTER / COMBINER		
	REPEATER		
	CWS - REMOTE LOCATION COMPONENT ENCLOSURE (RHG - REMOTE HUB GROUP)		
	BBU - BATTERY BACKUP UNIT		
	BSH - BASE STATION HOTEL		

KEY PLAN



01 ENLARGED WEST MEZZANINE RF DESIGN
SCALE: 1" = 10'-0"



REV	DESCRIPTION	DATE
1	AS BUILT INITIAL RELEASE	23MAR12
2	AS BUILT REVISION-A	02OCT12
3	AS BUILT REVISION-B	17JAN13

PROPRIETARY

DESIGNED:	JK
DRAWN:	RL
CHECKED:	JK
APPROVED:	RD
ISSUED:	20APR10

FULL SIZE ARCH D 24x36 DRAWING



WMATA - WCI

STATION NAME
NAVY YARD

DRAWING TITLE
ENLARGED MEZZANINE RF DESIGN
CWS

REFERENCE MAP
F05.a

SHEET NUMBER
2.02
CWS
05 OF 18

← WATERFRONT

ANACOSTIA →

EAST MEZZANINE LEVEL

126+59

SYMBOLS LEGEND

NOT ALL SYMBOLS SHOWN MAY BE REQUIRED

	CONNECTOR, MALE TO FEMALE
	JUMPER ASSEMBLY, MALE/MALE
	SOLID SHIELD COAXIAL CABLE CABLE SIZE AS NOTED
	FIBER OPTIC CABLE
	ITEMS COLORED RED PROVIDER: POWERWAVE
	ITEMS COLORED LT. GREEN PROVIDER: CLIENT / BY OTHERS
	ITEMS COLORED LT. BLUE FUTURE INSTALLATION
	CORE DRILLING REQUIRED
	CABLE UP / CABLE DOWN
	TO ← FROM → CABLE "TO" AND "FROM" DESTINATION

COMPONENT IDENTIFICATION

PA - PANEL ANTENNA	EA - OMNI ANTENNA	ENCL - ENCLOSURE	DIR - DIRECTION
CC - COAXIAL CABLE	RC - RADIATING CABLE	INC - INCREMENTAL	NUM - NUMBERING
FC - FIBER CABLE	SP - SPLITTER	PA-CWSF##-#-01	SYSTEM (CWS)
DC - DIRECTIONAL COUPLER			REMOTE LOCATION
			ENCLOSURE NUMBER



REV	DESCRIPTION	DATE
AS BUILT INITIAL RELEASE		23MAR12
AS BUILT REVISION-A		02OCT12
AS BUILT REVISION-B		17JAN13

PROPRIETARY

DESIGNED:	JK
DRAWN:	RL
CHECKED:	JK
APPROVED:	RD
ISSUED:	20APR10

FULL SIZE ARCH D 24x36 DRAWING



WMATA - WCI

STATION NAME

NAVY YARD

DRAWING TITLE

ENLARGED PLATFORM RF DESIGN

CWS

REFERENCE MAP

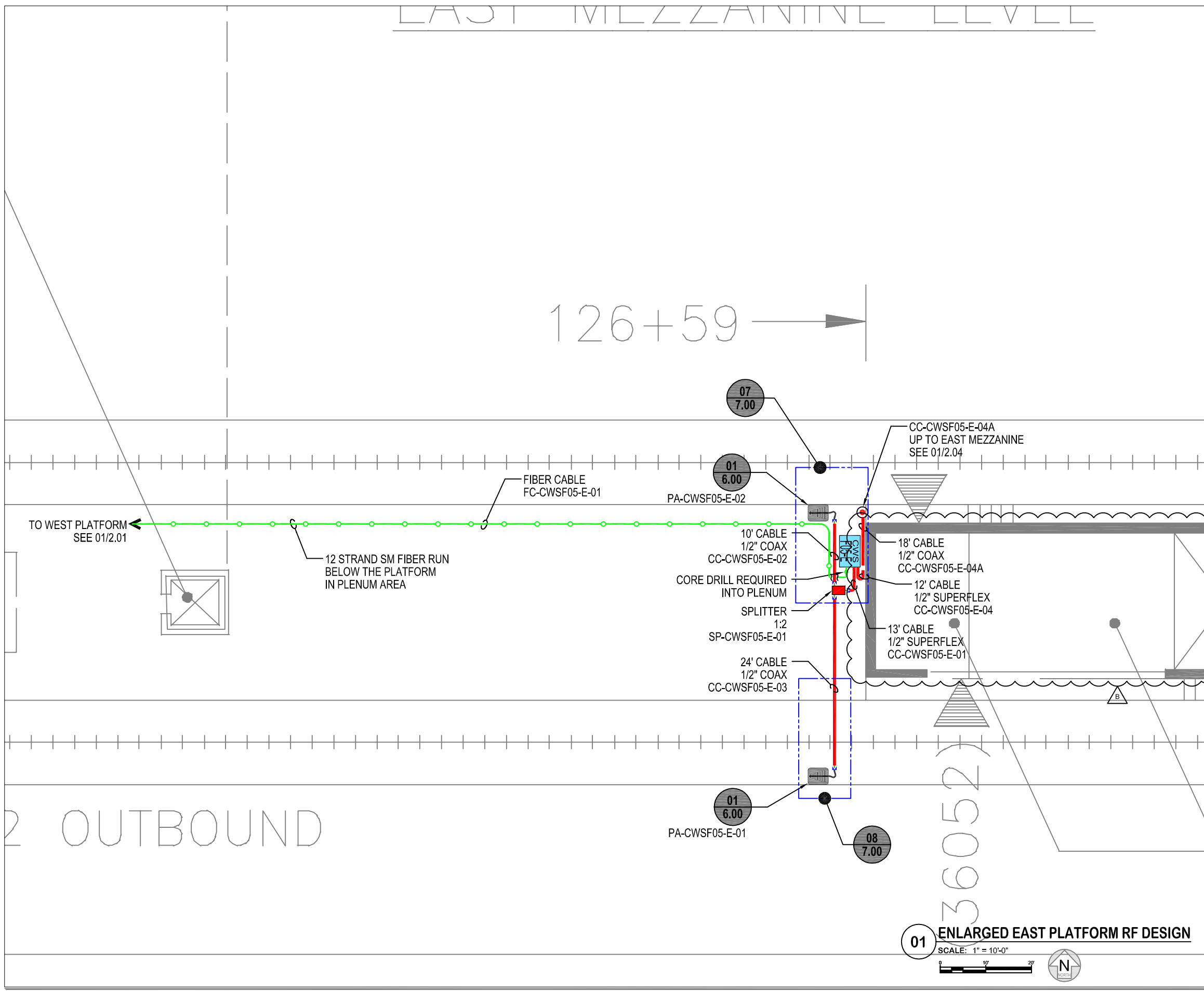
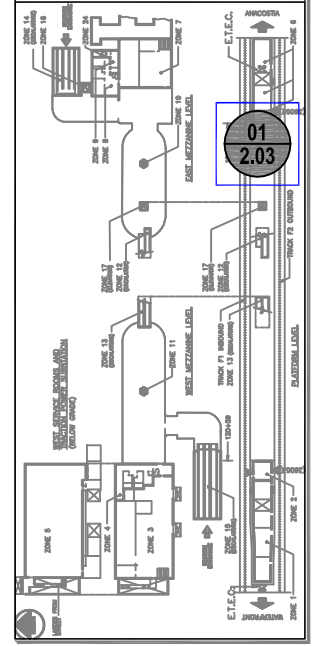
F05.a

SHEET NUMBER

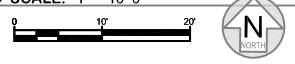
2.03
CWS

06 OF 18

KEY PLAN



01 ENLARGED EAST PLATFORM RF DESIGN
SCALE: 1" = 10'-0"



← WATERFRONT

ANACOSTIA →

2 OUTBOUND

36052

SYMBOLS LEGEND

NOT ALL SYMBOLS SHOWN MAY BE REQUIRED

	CONNECTOR, MALE TO FEMALE
	JUMPER ASSEMBLY, MALE/MALE
	SOLID SHIELD COAXIAL CABLE CABLE SIZE AS NOTED
	FIBER OPTIC CABLE
	ITEMS COLORED RED PROVIDER: POWERWAVE
	ITEMS COLORED LT. GREEN PROVIDER: CLIENT / BY OTHERS
	ITEMS COLORED LT. BLUE FUTURE INSTALLATION
	CORE DRILLING REQUIRED
	CABLE UP / CABLE DOWN
	TO ← FROM → CABLE "TO" AND "FROM" DESTINATION

COMPONENT IDENTIFICATION

PA - PANEL ANTENNA	ENCLOSURE DIRECTION
OA - OMNI ANTENNA	INCREMENTAL NUMBERING
CC - COAXIAL CABLE	PA-CWS##-#-01
RC - RADIATING CABLE	SYSTEM (CWS)
FC - FIBER CABLE	REMOTE LOCATION
SP - SPLITTER	ENCLOSURE NUMBER
DC - DIRECTIONAL COUPLER	



REV	DESCRIPTION	DATE
AS BUILT INITIAL RELEASE		23MAR12
AS BUILT REVISION-A		02OCT12
AS BUILT REVISION-B		17JAN13

PROPRIETARY

DESIGNED:	JK
DRAWN:	RL
CHECKED:	JK
APPROVED:	RD
ISSUED:	20APR10

FULL SIZE ARCH D 24x36 DRAWING



WMATA - WCI

STATION NAME

NAVY YARD

DRAWING TITLE

ENLARGED
MEZZANINE
RF DESIGN

CWS

REFERENCE MAP

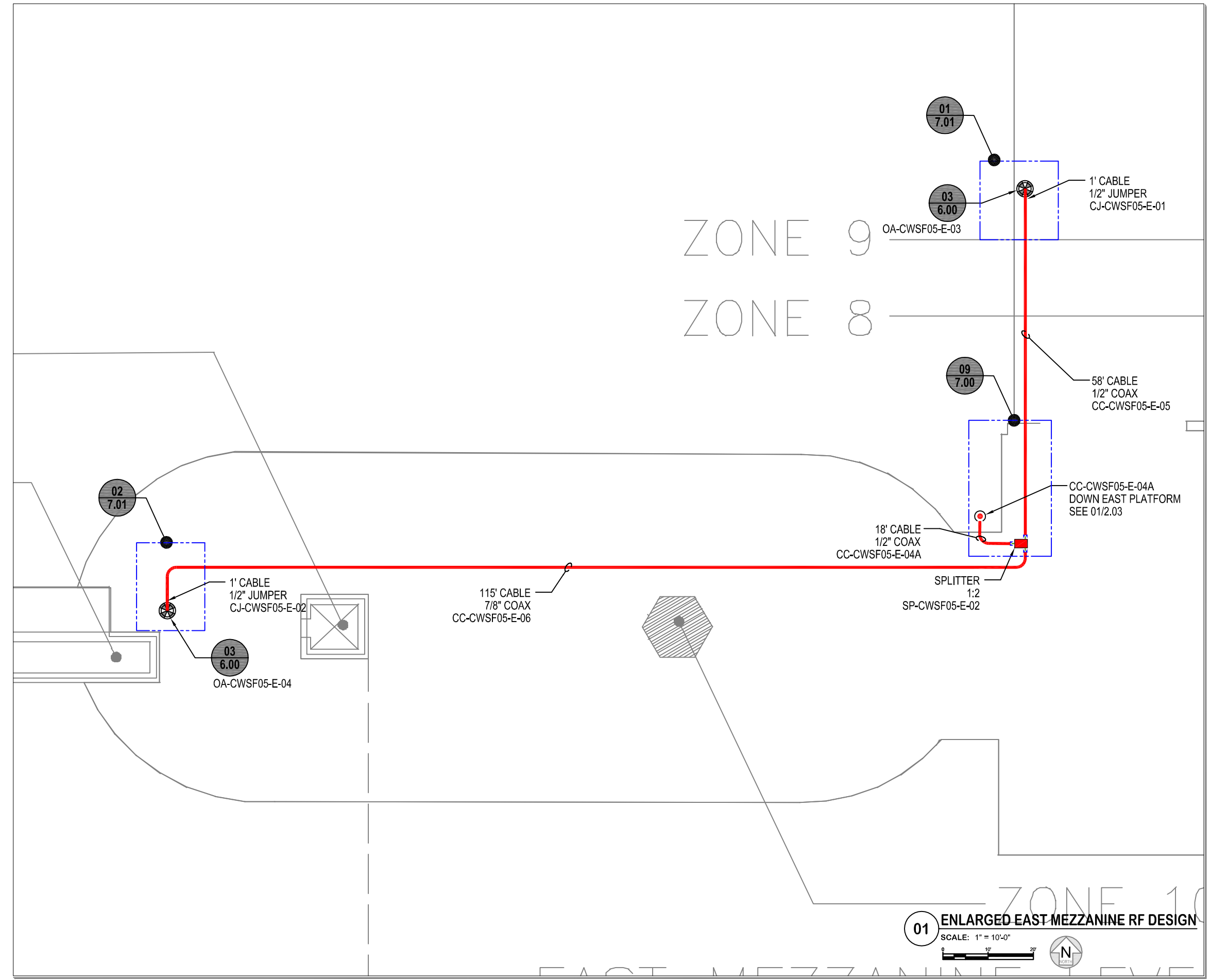
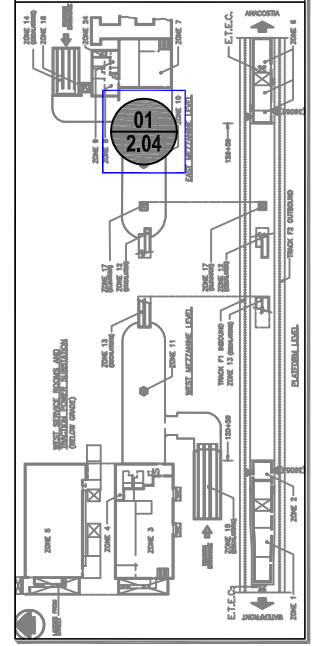
F05.a

SHEET NUMBER

2.04
CWS

07 OF 18

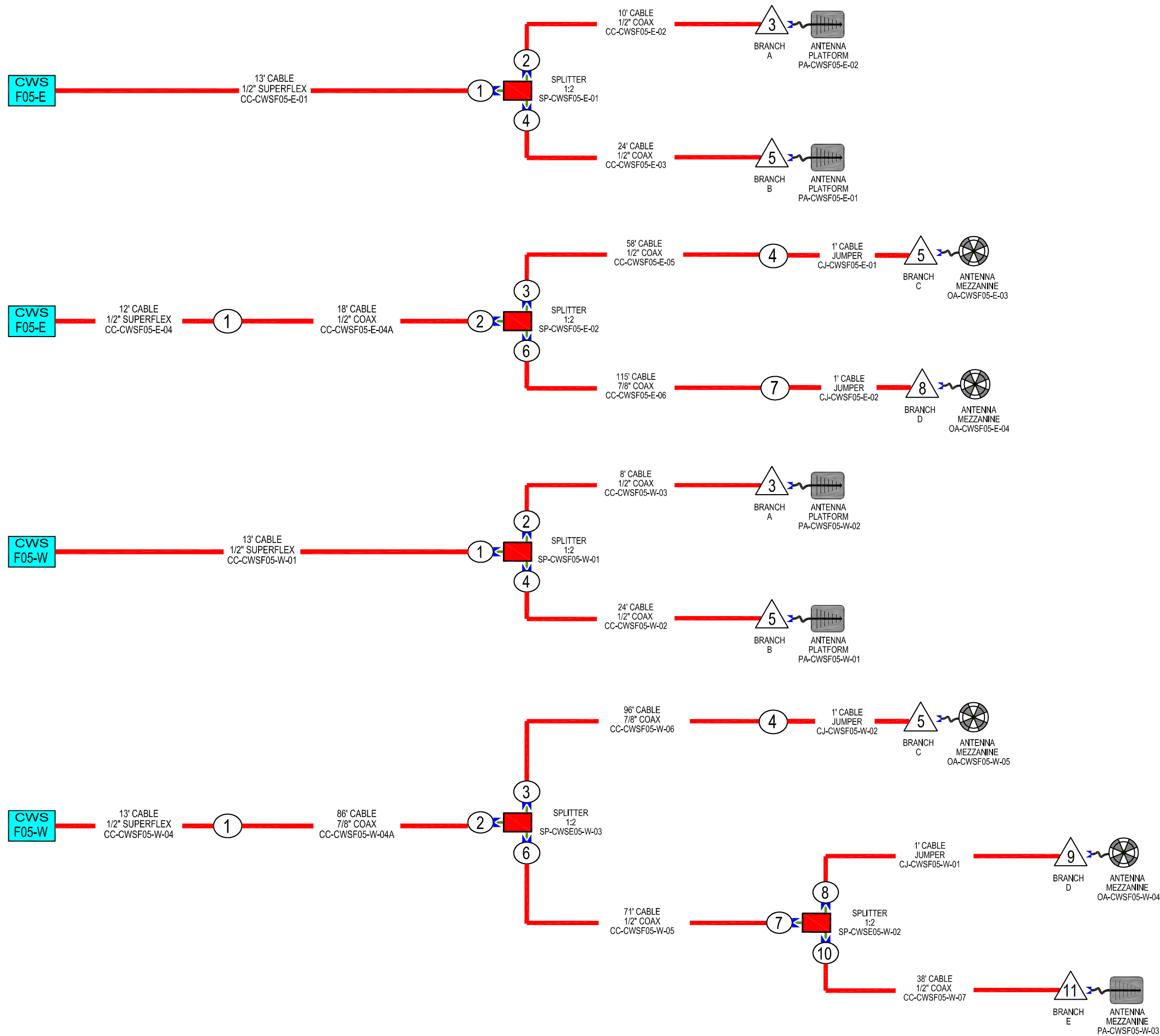
KEY PLAN



01 ENLARGED EAST MEZZANINE RF DESIGN
SCALE: 1" = 10'-0"
N

← WATERFRONT

ANACOSTIA →



SYMBOLS LEGEND

NOT ALL SYMBOLS SHOWN MAY BE REQUIRED

- CONNECTOR, MALE TO FEMALE
- JUMPER ASSEMBLY, MALE/MALE
- SOLID SHIELD COAXIAL CABLE
- CABLE SIZE AS NOTED
- FIBER OPTIC CABLE
- ITEMS COLORED RED PROVIDER: POWERWAVE
- ITEMS COLORED LT. GREEN PROVIDER: CLIENT / BY OTHERS
- ITEMS COLORED LT. BLUE FUTURE INSTALLATION
- CORE DRILLING REQUIRED
- CABLE UP / CABLE DOWN
- CABLE "TO" AND "FROM" DESTINATION

COMPONENT IDENTIFICATION

PA - PANEL ANTENNA
 OA - OMNI ANTENNA
 CC - COAXIAL CABLE
 RC - RADIATING CABLE
 FC - FIBER CABLE
 SP - SPLITTER
 DC - DIRECTIONAL COUPLER

ENCLOSURE DIRECTION INCREMENTAL NUMBERING
 SYSTEM (CWS)
 REMOTE LOCATION
 ENCLOSURE NUMBER

OMNI ANTENNA
 PANEL ANTENNA
 COUPLER, DIRECTIONAL (COUPLED PORT LABELED)
 SPLITTER / COMBINER
 REPEATER
 CWS (RHQ) - REMOTE LOCATION COMPONENT ENCLOSURE
 BSH - BASE STATION HOTEL
 COAX CONNECTION POINT
 FOR BRANCH LEVEL TEST POINT



REV	DESCRIPTION	DATE
1	AS BUILT INITIAL RELEASE	23MAR12
2	AS BUILT REVISION-A	02OCT12
3	AS BUILT REVISION-B	17JAN13

PROPRIETARY

DESIGNED:	JK
DRAWN:	RL
CHECKED:	JK
APPROVED:	RD
ISSUED:	20APR10

FULL SIZE ARCH D 24x36 DRAWING



WMATA - WCI

STATION NAME
NAVY YARD

DRAWING TITLE
 BLOCK
 DIAGRAM
 CWS

REFERENCE MAP
F05.a

SHEET NUMBER
2.06-RF
 CWS

08 OF 18



REV	DESCRIPTION	DATE
AS BUILT INITIAL RELEASE		23MAR12
AS BUILT REVISION-A		02OCT12
AS BUILT REVISION-B		17JAN13

PROPRIETARY

DESIGNED :	JK
DRAWN :	RL
CHECKED :	JK
APPROVED :	RD
ISSUED :	20APR10

FULL SIZE ARCH D 24x36 DRAWING



WMATA - WCI

STATION NAME

NAVY YARD

DRAWING TITLE

ENLARGED
PLATFORM
RF DESIGN

WAS

REFERENCE MAP

F05.a

SHEET NUMBER

3.01
WAS

09 OF 18

SYMBOLS LEGEND

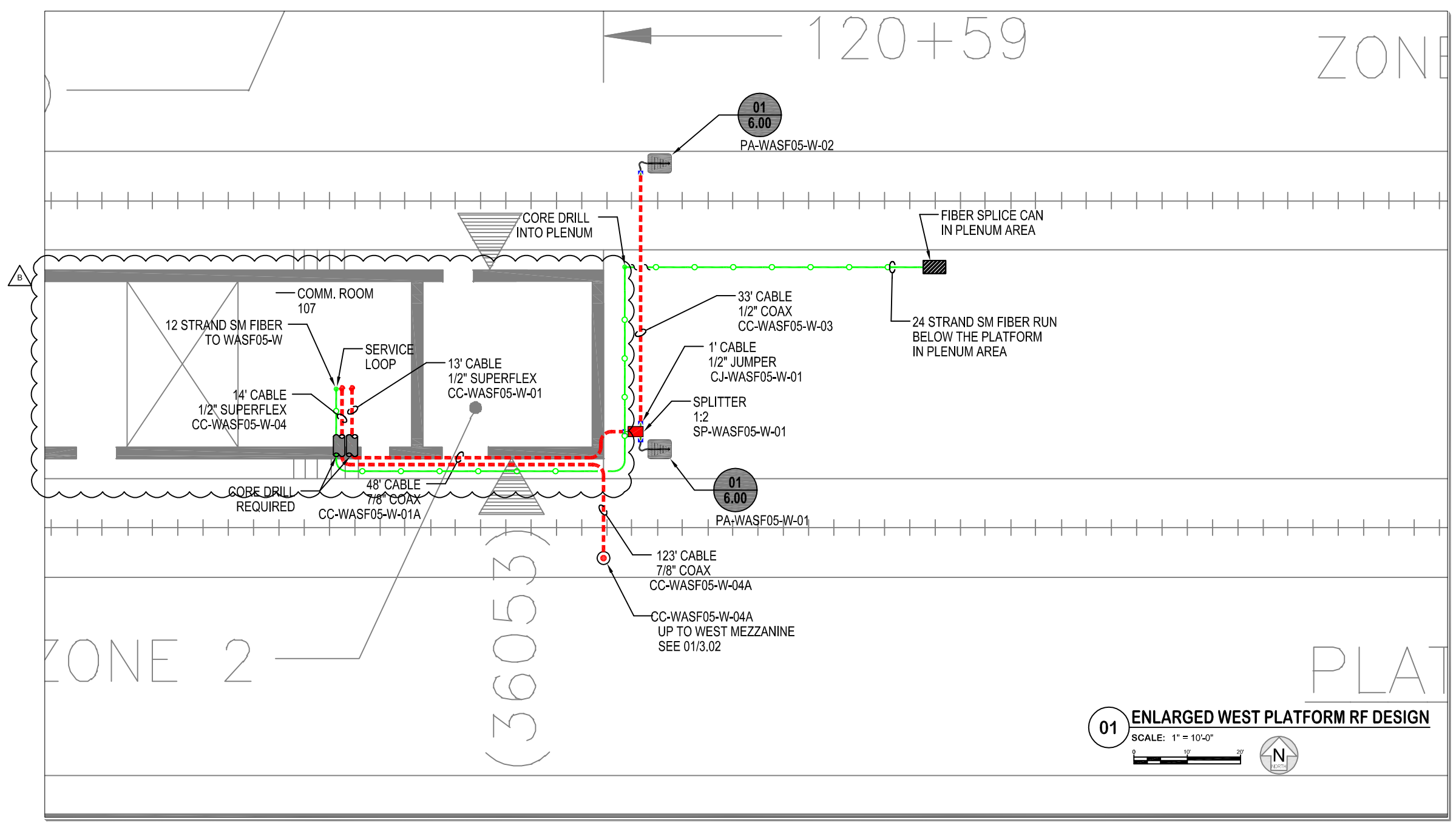
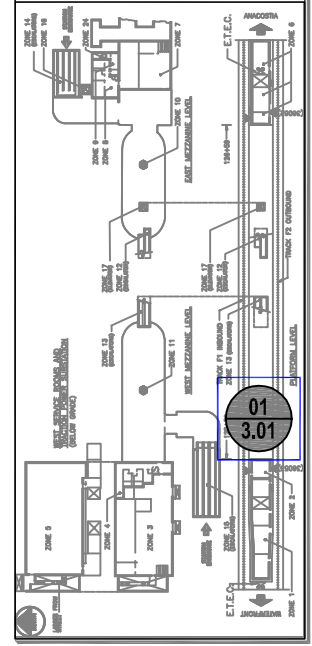
NOT ALL SYMBOLS SHOWN MAY BE REQUIRED

	CONNECTOR, MALE TO FEMALE
	JUMPER ASSEMBLY, MALE/MALE
	SOLID SHIELD COAXIAL CABLE WAS
	CABLE SIZE AS NOTED
	FIBER OPTIC CABLE
	ITEMS COLORED RED PROVIDER: POWERWAVE
	ITEMS COLORED LT. GREEN PROVIDER: CLIENT / BY OTHERS
	ITEMS COLORED LT. BLUE FUTURE INSTALLATION
	CORE DRILLING REQUIRED
	CABLE UP / CABLE DOWN
	CABLE "TO" AND "FROM" DESTINATION

COMPONENT IDENTIFICATION

PA - PANEL ANTENNA	EA - OMNI ANTENNA	CC - COAXIAL CABLE	RC - RADIATING CABLE	FC - FIBER CABLE	PC - POWER CABLE	SP - SPLITTER	DC - DIRECTIONAL COUPLER	ENCLOSURE DIRECTION INCREMENTAL NUMBERING
								PA-WAS###-#-01 SYSTEM (CWS) REMOTE LOCATION ENCLOSURE NUMBER
		WAS - REMOTE LOCATION COMPONENT ENCLOSURE						BSH BASE STATION HOTEL

KEY PLAN



01 ENLARGED WEST PLATFORM RF DESIGN
SCALE: 1" = 10'-0"
0 10' 20'

← WATERFRONT

ANACOSTIA →

SYMBOLS LEGEND

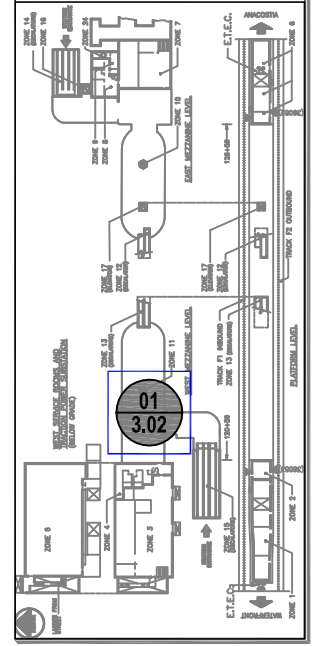
NOT ALL SYMBOLS SHOWN MAY BE REQUIRED

	CONNECTOR, MALE TO FEMALE
	JUMPER ASSEMBLY, MALE/MALE
	SOLID SHIELD COAXIAL CABLE CABLE SIZE AS NOTED
	FIBER OPTIC CABLE
	ITEMS COLORED RED PROVIDER: POWERWAVE
	ITEMS COLORED LT. GREEN PROVIDER: CLIENT / BY OTHERS
	ITEMS COLORED LT. BLUE FUTURE INSTALLATION
	CORE DRILLING REQUIRED
	CABLE UP / CABLE DOWN
	CABLE "TO" AND "FROM" DESTINATION

COMPONENT IDENTIFICATION

PA - PANEL ANTENNA	OA - OMNI ANTENNA	CC - COAXIAL CABLE	RC - RADIATING CABLE	FC - FIBER CABLE	PC - POWER CABLE	SP - SPLITTER	DC - DIRECTIONAL COUPLER
ENCLOSURE DIRECTION INCREMENTAL NUMBERING		SYSTEM (CWS) - REMOTE LOCATION ENCLOSURE NUMBER					
OMNI ANTENNA		PANEL ANTENNA					
COUPLER, DIRECTIONAL (COUPLED PORT LABELED)		SPLITTER / COMBINER					
REPEATER		WAS - REMOTE LOCATION COMPONENT ENCLOSURE					
BSH - BASE STATION HOTEL							

KEY PLAN



REV	DESCRIPTION	DATE
AS BUILT INITIAL RELEASE		23MAR12
AS BUILT REVISION-A		02OCT12
AS BUILT REVISION-B		17JAN13

PROPRIETARY

DESIGNED:	JK
DRAWN:	RL
CHECKED:	JK
APPROVED:	RD
ISSUED:	20APR10

FULL SIZE ARCH D 24x36 DRAWING



WMATA - WCI

STATION NAME

NAVY YARD

DRAWING TITLE

ENLARGED MEZZANINE RF DESIGN

WAS

REFERENCE MAP

F05.a

SHEET NUMBER

3.02
WAS

10 OF 18

(ESCALATORS)

ZONE 11

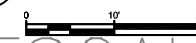
WEST MEZZANINE LEV

TRACK F1 INBOUND

ZONE 17 (ESCALATORS)

01 ENLARGED WEST MEZZANINE RF DESIGN
SCALE: 1" = 10'-0"

SCALE: 1" = 10'-0"



123' CABLE
7/8" COAX
CC-WASF05-W-04A

CC-WASF05-W-04A
DOWN TO WEST PLATFORM
SEE 01/3.01

SPLITTER
1:2
SP-WASF05-W-02

81' CABLE
1/2" COAX
CC-WASF05-W-05

1' CABLE
1/2" JUMPER
CJ-WASF05-W-03

OA-WASF05-W-04

SPLITTER
1:2
SP-WASF05-W-03

15' CABLE
1/2" COAX
CC-WASF05-W-07

PA-WASF05-W-03

03
6.00
OA-WASF05-W-05

1' CABLE
1/2" JUMPER
CJ-WASF05-W-02

104' CABLE
7/8" COAX
CC-WASF05-W-06

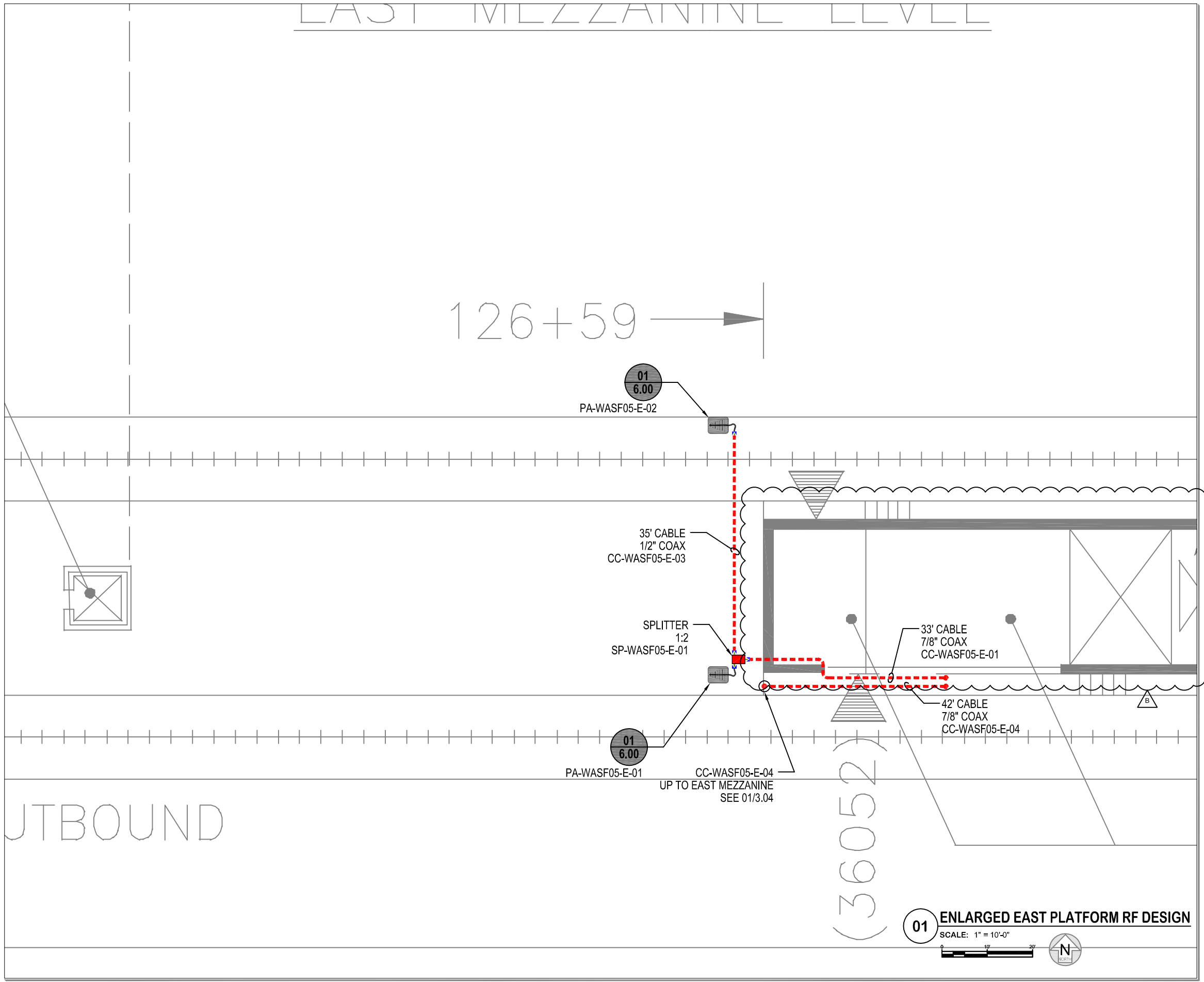
← 120+59

← WATERFRONT

ANACOSTIA →

EAST MEZZANINE LEVEL

126+59



SYMBOLS LEGEND

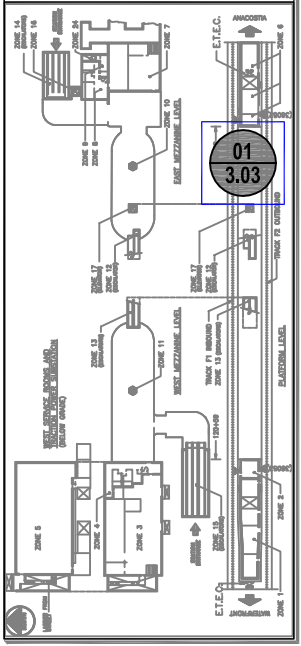
NOT ALL SYMBOLS SHOWN MAY BE REQUIRED

	CONNECTOR, MALE TO FEMALE
	JUMPER ASSEMBLY, MALE/MALE
	SOLID SHIELD COAXIAL CABLE WAS
	CABLE SIZE AS NOTED
	FIBER OPTIC CABLE
	ITEMS COLORED RED PROVIDER: POWERWAVE
	ITEMS COLORED LT. GREEN PROVIDER: CLIENT / BY OTHERS
	ITEMS COLORED LT. BLUE FUTURE INSTALLATION
	CORE DRILLING REQUIRED
	CABLE UP / CABLE DOWN
	CABLE "TO" AND "FROM" DESTINATION

COMPONENT IDENTIFICATION

PA - PANEL ANTENNA	OA - OMNI ANTENNA	CC - COAXIAL CABLE	RC - RADIATING CABLE	FC - FIBER CABLE	PC - POWER CABLE	SP - SPLITTER	DC - DIRECTIONAL COUPLER	ENCLOSURE DIRECTION INCREMENTAL NUMBERING	SYSTEM (CWS) REMOTE LOCATION ENCLOSURE NUMBER
								PA-WAS###-#-01	
IN 1 OUT 2	1:2 1:3 1:4	REPEATER	WAS ###	BSH					
COUPLER DIRECTIONAL (COUPLED PORT LABELED)									
SPLITTER / COMBINER									
REPEATER									
WAS - REMOTE LOCATION COMPONENT ENCLOSURE									
BSH - BASE STATION HOTEL									

KEY PLAN



01 ENLARGED EAST PLATFORM RF DESIGN
SCALE: 1" = 10'-0"



REV	DESCRIPTION	DATE
1	AS BUILT INITIAL RELEASE	23MAR12
2	AS BUILT REVISION-A	02OCT12
3	AS BUILT REVISION-B	17JAN13

PROPRIETARY

DESIGNED:	JK
DRAWN:	RL
CHECKED:	JK
APPROVED:	RD
ISSUED:	20APR10

FULL SIZE ARCH D 24x36 DRAWING



WMATA - WCI

STATION NAME

NAVY YARD

DRAWING TITLE

ENLARGED PLATFORM RF DESIGN

WAS

REFERENCE MAP

F05.a

SHEET NUMBER

3.03
WAS

11 OF 18

← WATERFRONT

ANACOSTIA →

UTBOUND

(36052)

SYMBOLS LEGEND

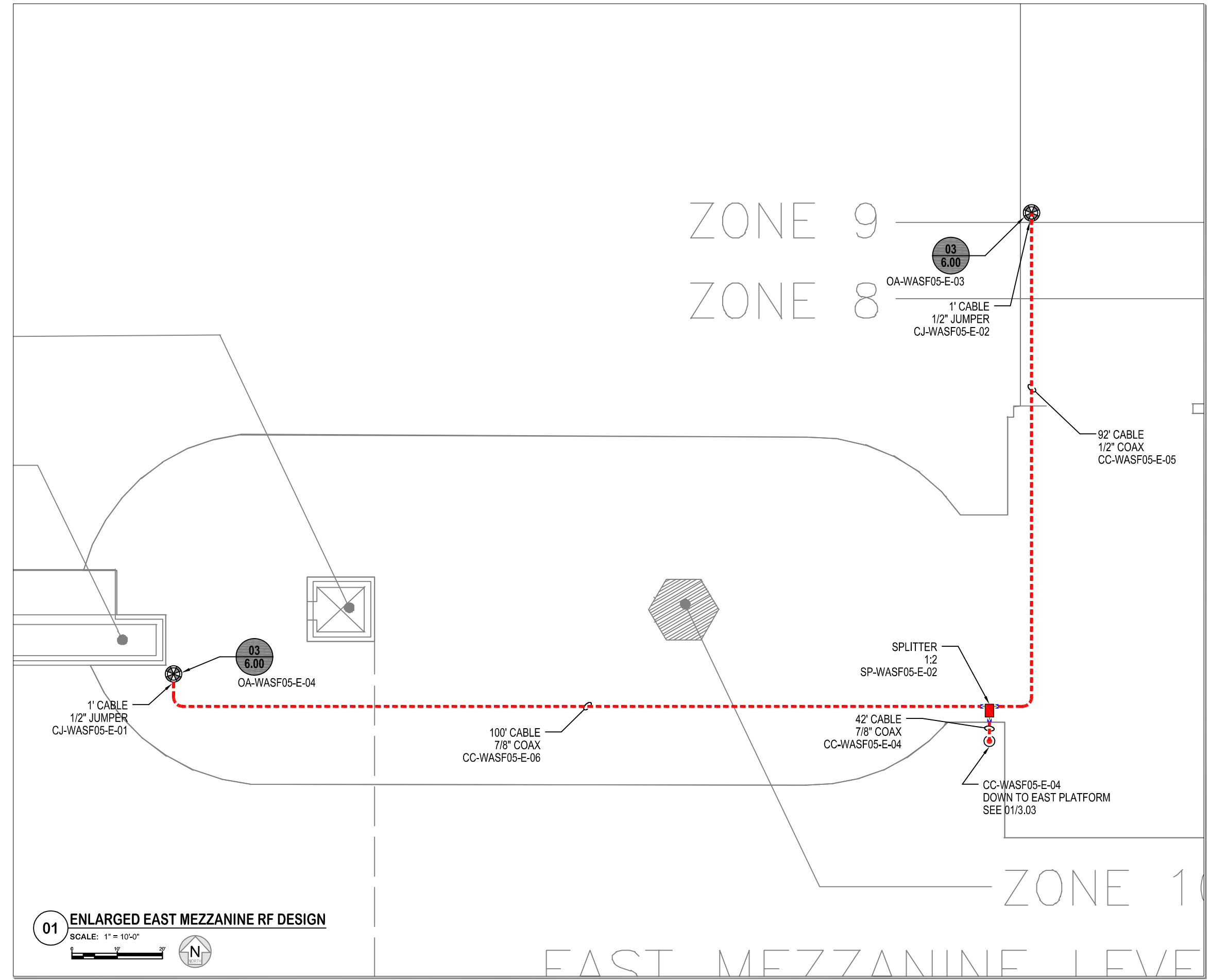
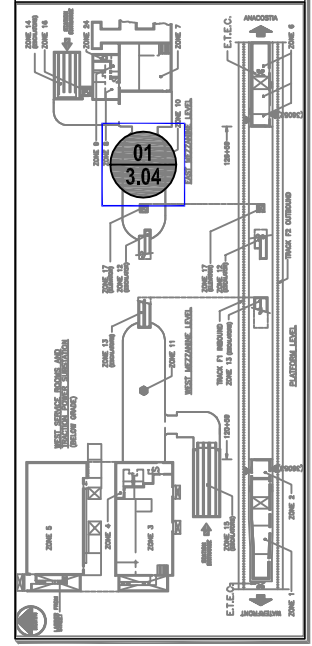
NOT ALL SYMBOLS SHOWN MAY BE REQUIRED

	CONNECTOR, MALE TO FEMALE
	JUMPER ASSEMBLY, MALE/MALE
	SOLID SHIELD COAXIAL CABLE WAS
	CABLE SIZE AS NOTED
	FIBER OPTIC CABLE
	ITEMS COLORED RED PROVIDER: POWERWAVE
	ITEMS COLORED LT. GREEN PROVIDER: CLIENT / BY OTHERS
	ITEMS COLORED LT. BLUE FUTURE INSTALLATION
	CORE DRILLING REQUIRED
	CABLE UP / CABLE DOWN
	TO / FROM CABLE "TO" AND "FROM" DESTINATION

COMPONENT IDENTIFICATION

PA - PANEL ANTENNA	OA - OMNI ANTENNA	CC - COAXIAL CABLE	RC - RADIATING CABLE	FC - FIBER CABLE	PC - POWER CABLE	SP - SPLITTER	DC - DIRECTIONAL COUPLER	ENCLOSURE DIRECTION INCREMENTAL NUMBERING	SYSTEM (CWS) - REMOTE LOCATION ENCLOSURE NUMBER
OMNI ANTENNA	PANEL ANTENNA	COUPLER, DIRECTIONAL (COUPLED PORT LABELED)	SPLITTER / COMBINER	REPEATER	WAS - REMOTE LOCATION COMPONENT ENCLOSURE	BSH - BASE STATION HOTEL			

KEY PLAN



REV	DESCRIPTION	DATE
1	AS BUILT INITIAL RELEASE	23MAR12
2	AS BUILT REVISION-A	02OCT12
3	AS BUILT REVISION-B	17JAN13

PROPRIETARY

DESIGNED:	JK
DRAWN:	RL
CHECKED:	JK
APPROVED:	RD
ISSUED:	20APR10

FULL SIZE ARCH D 24x36 DRAWING



WMATA - WCI

STATION NAME

NAVY YARD

DRAWING TITLE

ENLARGED MEZZANINE RF DESIGN

WAS

REFERENCE MAP

F05.a

SHEET NUMBER

3.04
WAS

12 OF 18

01 ENLARGED EAST MEZZANINE RF DESIGN
SCALE: 1" = 10'-0"



← WATERFRONT

ANACOSTIA →

REV	DESCRIPTION	DATE
1	AS BUILT INITIAL RELEASE	23MAR12
2	AS BUILT REVISION-A	02OCT12
3	AS BUILT REVISION-B	17JAN13

PROPRIETARY

DESIGNED:	JK
DRAWN:	RL
CHECKED:	JK
APPROVED:	RD
ISSUED:	20APR10

FULL SIZE ARCH D 24x36 DRAWING



WMATA - WCI

STATION NAME

NAVY YARD

DRAWING TITLE

BLOCK DIAGRAM

WAS

REFERENCE MAP

NONE

SHEET NUMBER

3.06-RF
WAS

SYMBOLS LEGEND

NOT ALL SYMBOLS SHOWN MAY BE REQUIRED

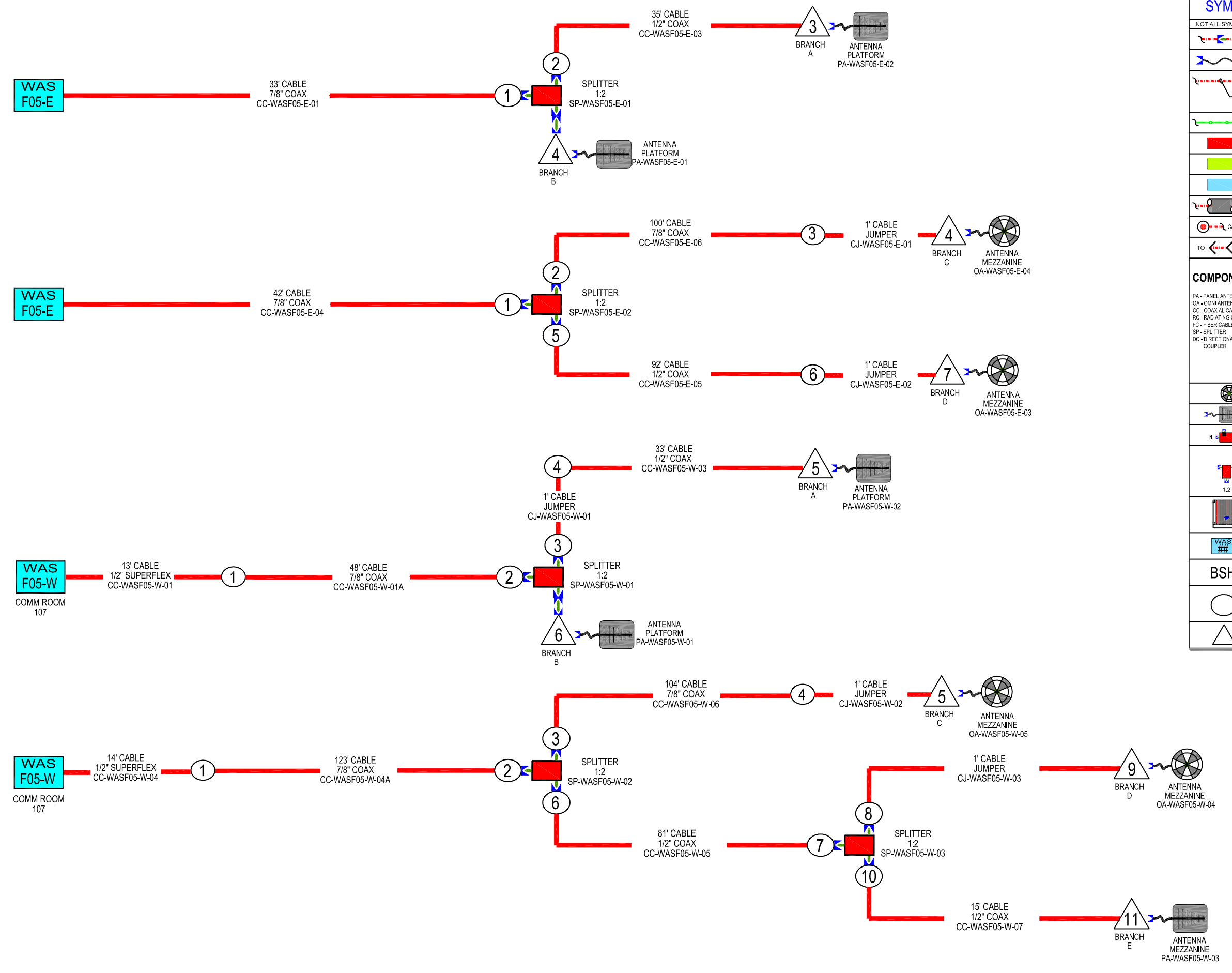
- CONNECTOR, MALE TO FEMALE
- JUMPER ASSEMBLY, MALE / MALE
- SOLID SHIELD COAXIAL CABLE
- CABLE SIZE AS NOTED
- FIBER OPTIC CABLE
- ITEMS COLORED RED PROVIDER: POWERWAVE
- ITEMS COLORED LT. GREEN PROVIDER: CLIENT / BY OTHERS
- ITEMS COLORED LT. BLUE FUTURE INSTALLATION
- CORE DRILLING REQUIRED
- CABLE UP / CABLE DOWN
- CABLE "TO" AND "FROM" DESTINATION

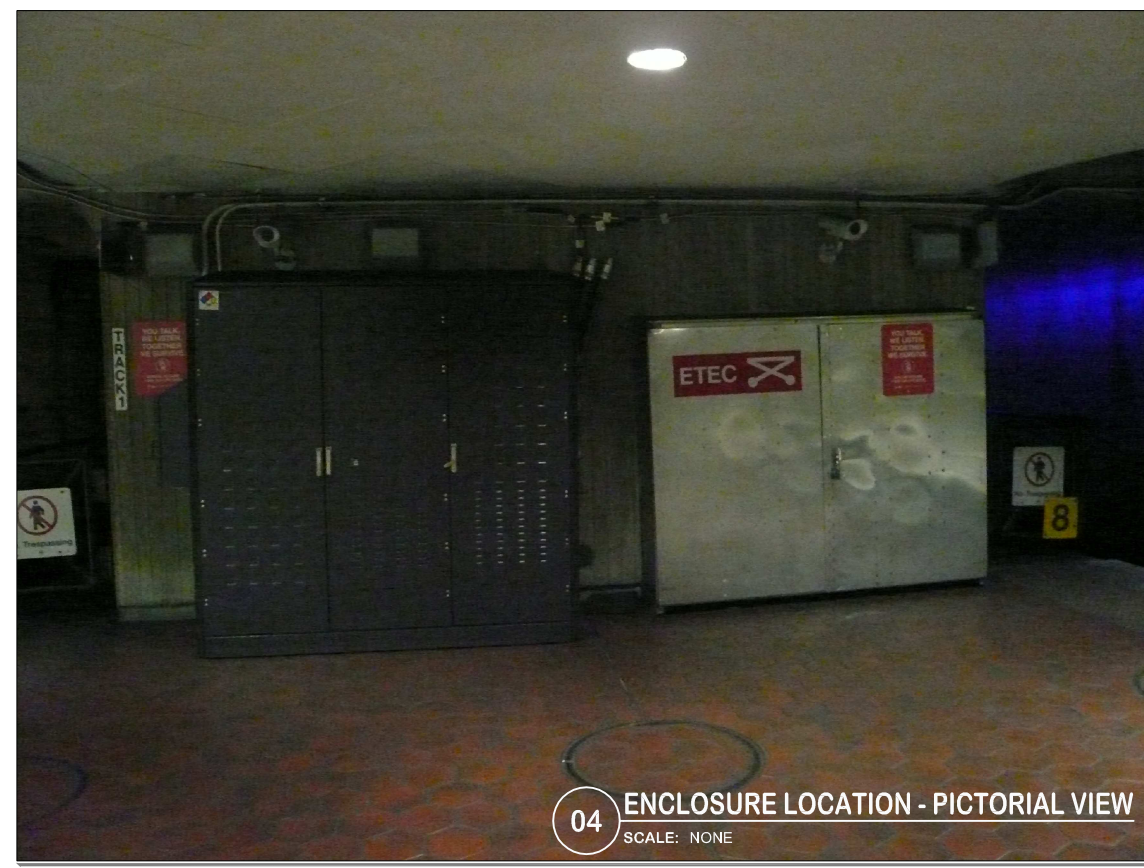
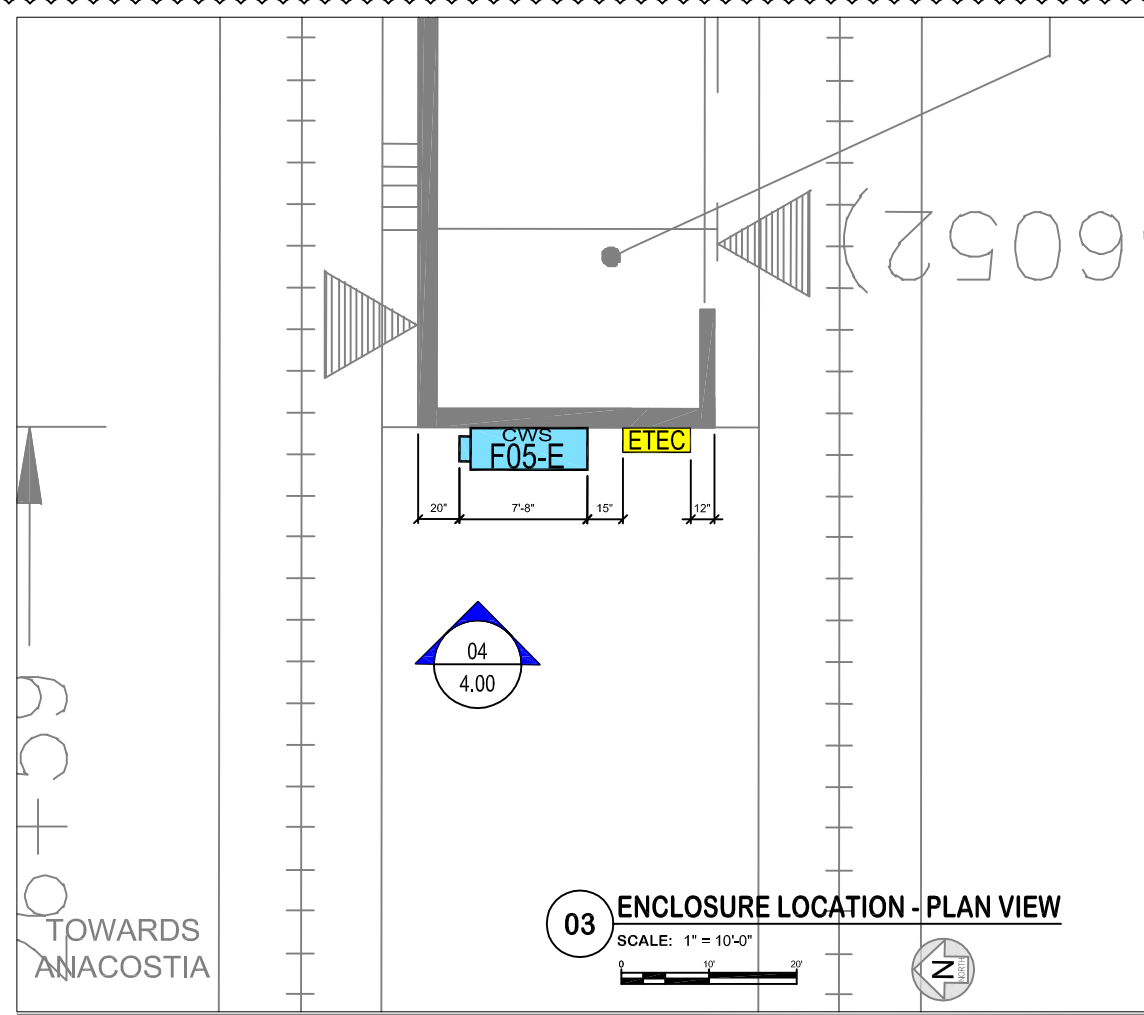
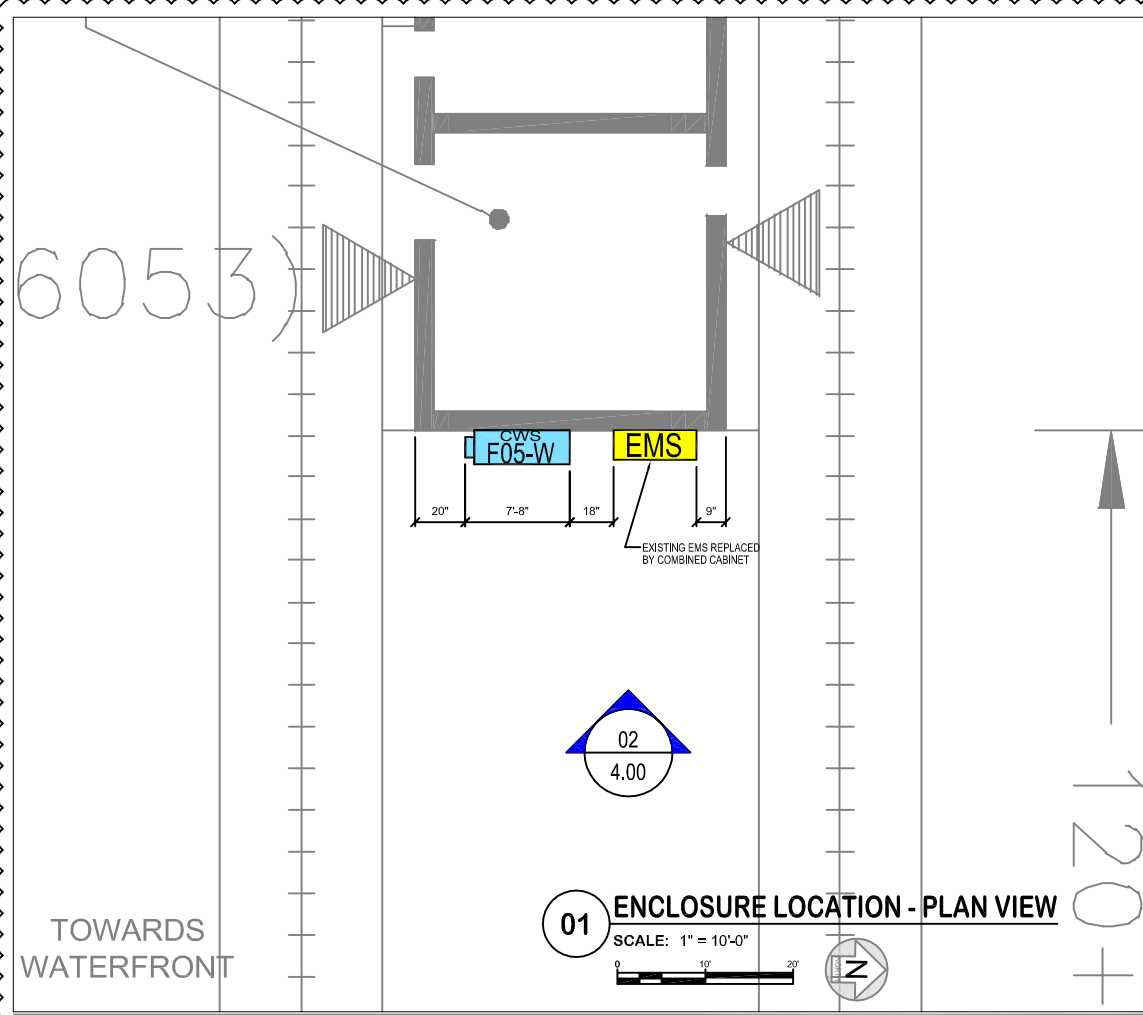
COMPONENT IDENTIFICATION

PA - PANEL ANTENNA
OA - OMNI ANTENNA
CC - COAXIAL CABLE
RC - RADIATING CABLE
FC - FIBER CABLE
SP - SPLITTER
DC - DIRECTIONAL COUPLER

ENCLOSURE DIRECTION INCREMENTAL NUMBERING
PA-WAS###-#-01
SYSTEM (WAS)
REMOTE LOCATION ENCLOSURE NUMBER

- OMNI ANTENNA
- PANEL ANTENNA
- COUPLER, DIRECTIONAL (COUPLED PORT LABELED)
- SPLITTER / COMBINER
- REPEATER
- WAS - REMOTE LOCATION COMPONENT ENCLOSURE
- BSH - BASE STATION HOTEL
- COAX CONNECTION POINT
- FOR BRANCH LEVEL TEST POINT





SYMBOLS LEGEND

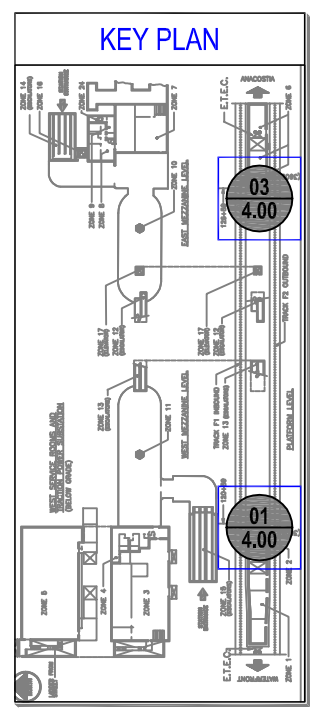
NOT ALL SYMBOLS SHOWN MAY BE REQUIRED

	CONNECTOR, MALE TO FEMALE
	JUMPER ASSEMBLY, MALE / MALE
	SOLID SHIELD COAXIAL CABLE
	CABLE SIZE AS NOTED
	FIBER OPTIC CABLE
	ITEMS COLORED RED PROVIDER: POWERWAVE
	ITEMS COLORED LT. GREEN PROVIDER: CLIENT / BY OTHERS
	ITEMS COLORED LT. BLUE FUTURE INSTALLATION
	CORE DRILLING REQUIRED
	CABLE UP / CABLE DOWN
	TO / FROM CABLE "TO" AND "FROM" DESTINATION

COMPONENT IDENTIFICATION

PA - PANEL ANTENNA	ENCLASURE DIRECTION
CA - OMNI ANTENNA	INCREMENTAL NUMBERING
CC - COAXIAL CABLE	SYSTEM (CWS)
RC - RADIATING CABLE	REMOTE LOCATION
FC - FIBER CABLE	ENCLOSURE NUMBER
SP - SPLITTER	
DC - DIRECTIONAL COUPLER	

	OMNI ANTENNA
	PANEL ANTENNA
	COUPLER, DIRECTIONAL (COUPLED PORT LABELED)
	SPLITTER / COMBINER
	REPEATER
	CWS - REMOTE LOCATION COMPONENT ENCLOSURE (RHG - REMOTE HUB GROUP)
	BBU - BATTERY BACKUP UNIT
	BSH - BASE STATION HOTEL



REV	DESCRIPTION	DATE
1	AS BUILT INITIAL RELEASE	23MAR12
2	AS BUILT REVISION-A	02OCT12
3	AS BUILT REVISION-B	17JAN13

PROPRIETARY

DESIGNED:	JK
DRAWN:	RL
CHECKED:	JK
APPROVED:	RD
ISSUED:	20APR10

FULL SIZE ARCH D 24x36 DRAWING



WMATA - WCI

STATION NAME

NAVY YARD

DRAWING TITLE

ENCLOSURE LOCATION

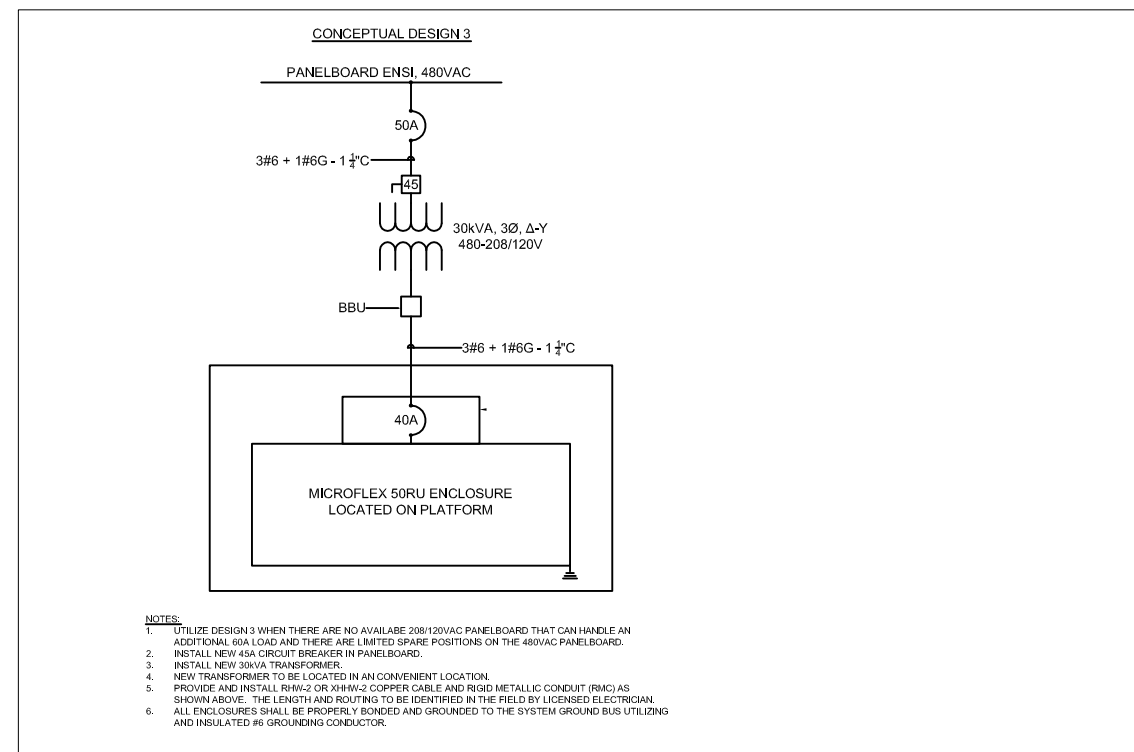
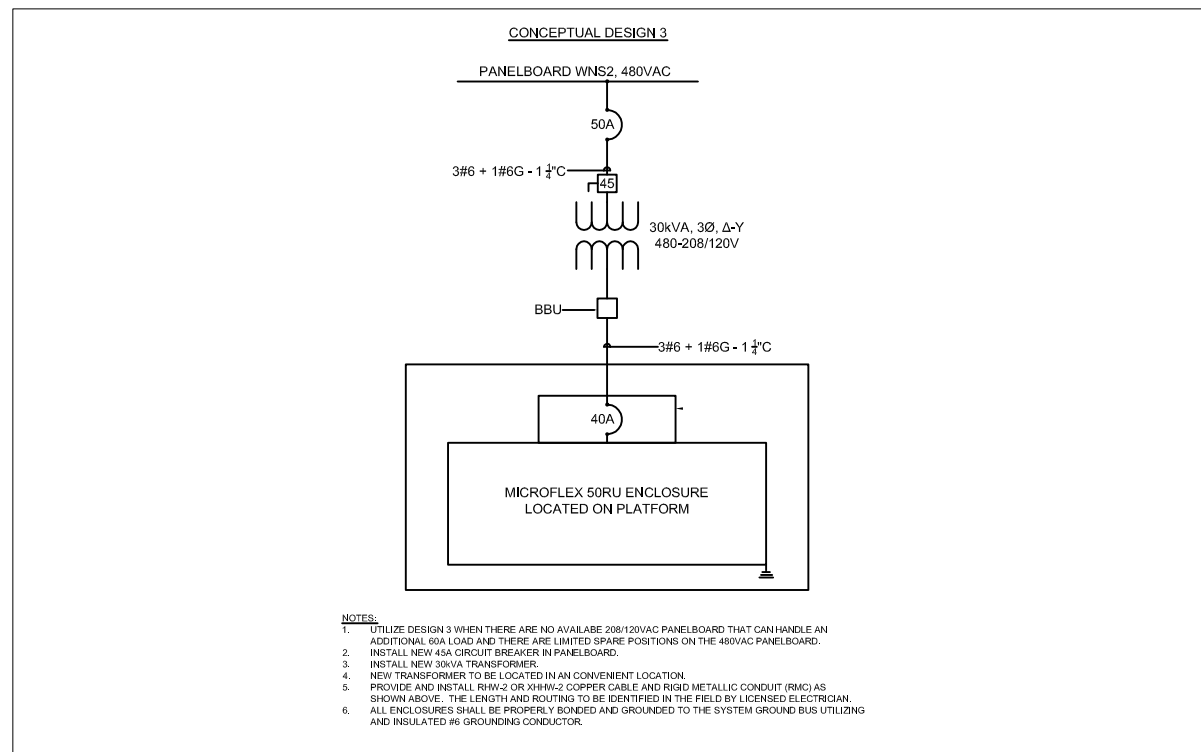
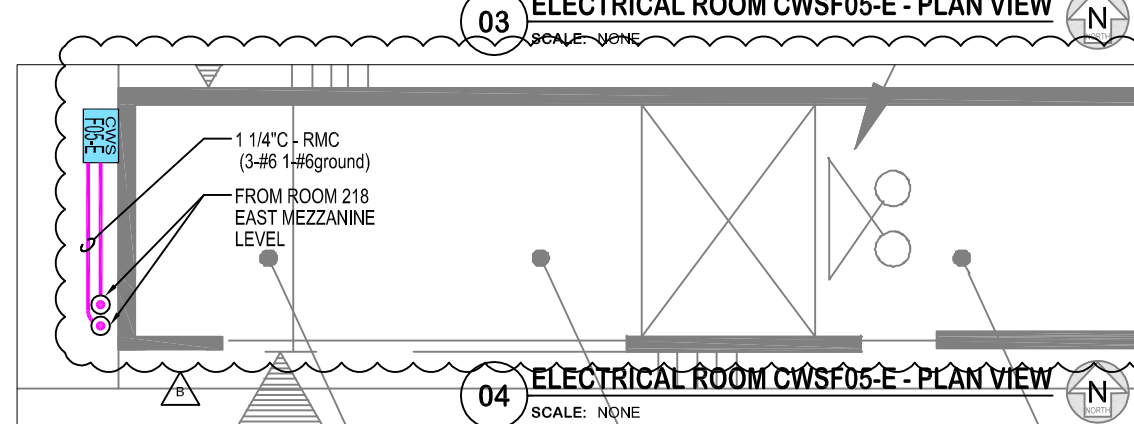
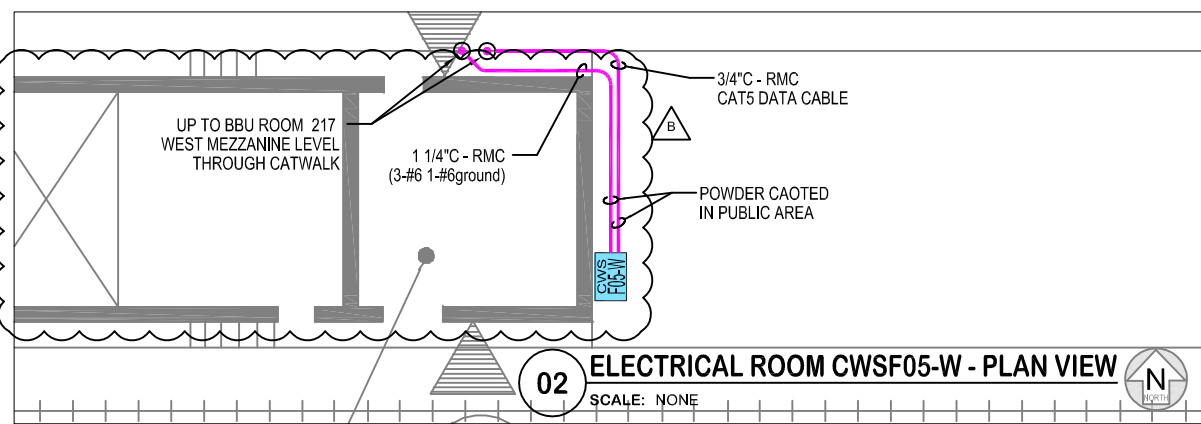
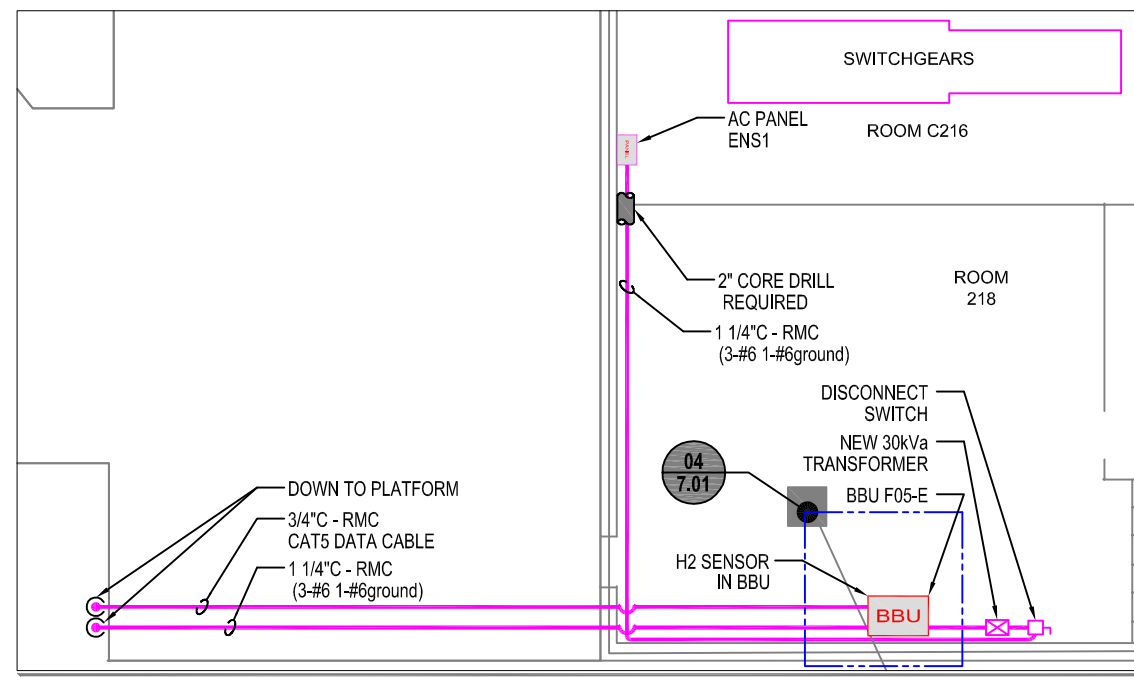
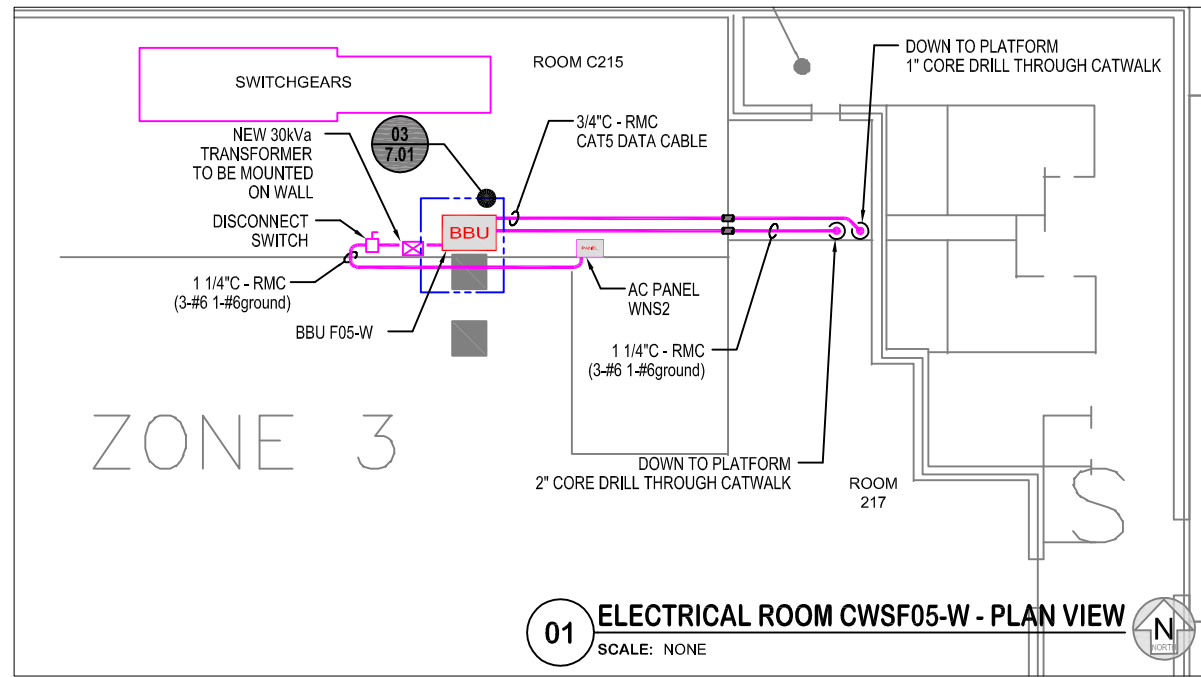
CWS

REFERENCE MAP

F05.a

SHEET NUMBER

4.00
CWS



SYMBOLS LEGEND

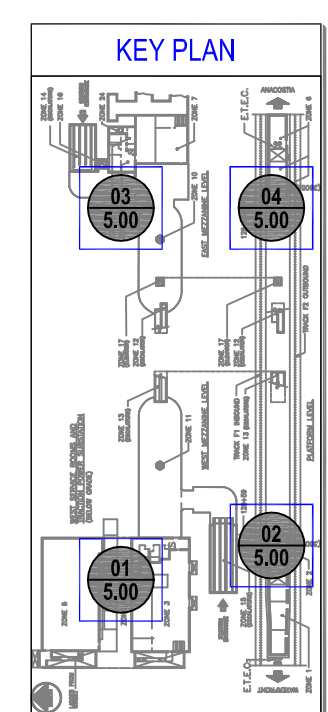
NOT ALL SYMBOLS SHOWN MAY BE REQUIRED

	CONNECTOR, MALE TO FEMALE
	JUMPER ASSEMBLY, MALE/MALE
	SOLID SHIELD COAXIAL CABLE CWS
	CABLE SIZE AS NOTED
	FIBER OPTIC CABLE
	ITEMS COLORED RED PROVIDER: POWERWAVE
	ITEMS COLORED LT. GREEN PROVIDER: CLIENT / BY OTHERS
	ITEMS COLORED LT. BLUE FUTURE INSTALLATION
	CORE DRILLING REQUIRED
	CABLE UP / CABLE DOWN
	TO / FROM CABLE "TO" AND "FROM" DESTINATION

COMPONENT IDENTIFICATION

PA - PANEL ANTENNA	ENCLASURE DIRECTION
CA - OMNI ANTENNA	INCREMENTAL NUMBERING
CC - COAXIAL CABLE	SYSTEM (CWS)
RC - RADIATING CABLE	REMOTE LOCATION
FC - FIBER CABLE	ENCLASURE NUMBER
SP - SPLITTER	
DC - DIRECTIONAL COUPLER	

	OMNI ANTENNA
	PANEL ANTENNA
	COUPLER, DIRECTIONAL (COUPLED PORT LABELED)
	SPLITTER / COMBINER
	REPEATER
	CWS - REMOTE LOCATION COMPONENT ENCLASURE (RHG - REMOTE HUB GROUP)
	BBU - BATTERY BACKUP UNIT
	BSH - BASE STATION HOTEL



REV	DESCRIPTION	DATE
AS BUILT INITIAL RELEASE		23MAR12
AS BUILT REVISION-A		02OCT12
AS BUILT REVISION-B		17JAN13

PROPRIETARY

DESIGNED: JK
 DRAWN: RL
 CHECKED: JK
 APPROVED: RD
 ISSUED: 20APR10
 FULL SIZE ARCH D 24x36 DRAWING



WMATA - WCI

STATION NAME

NAVY YARD

DRAWING TITLE

ELECTRICAL REQUIREMENTS

CWS

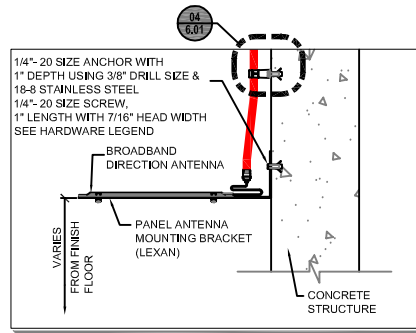
REFERENCE MAP

F05.a

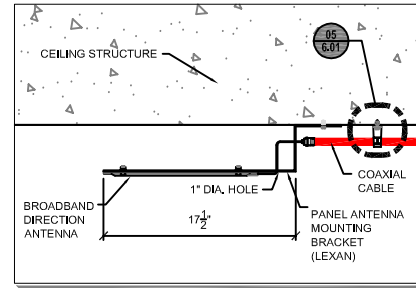
SHEET NUMBER

5.00
CWS

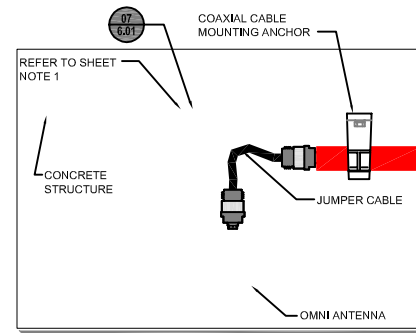
15 OF 18



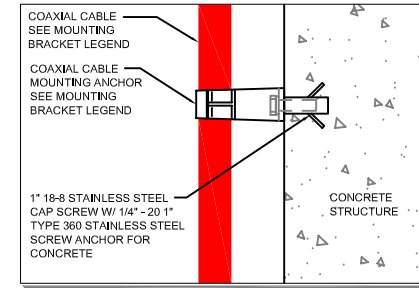
01 PANEL ANTENNA WALL MOUNT
SCALE: NONE



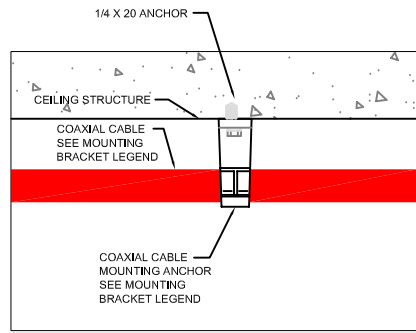
02 PANEL ANTENNA CEILING MOUNT
SCALE: NONE



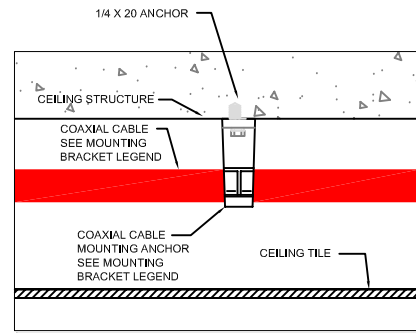
03 OMNI ANTENNA MOUNTING DETAIL
SCALE: NONE



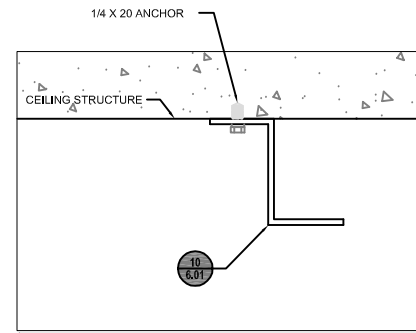
04 COAXIAL CABLE - WALL / CEILING REVEAL MOUNT ANCHOR DETAIL
SCALE: NONE



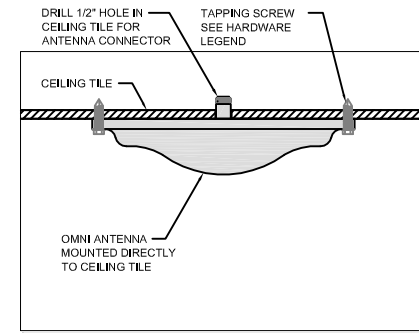
05 COAXIAL CABLE - WALL / CEILING REVEAL EDGE MOUNT ANCHOR DETAIL
SCALE: NONE



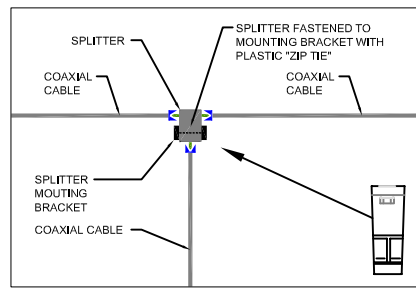
06 COAXIAL CABLE - ABOVE CEILING TILE CEILING MOUNT ANCHOR DETAIL
SCALE: NONE



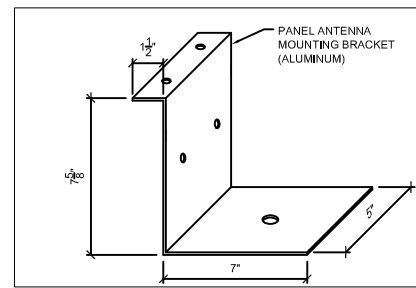
07 OMNI ANTENNA - CONCRETE CEILING MOUNT BRACKET
SCALE: NONE



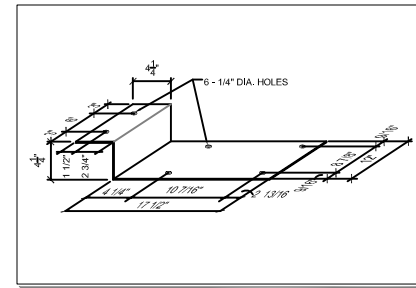
08 OMNI ANTENNA TILE CEILING MOUNT
SCALE: NONE



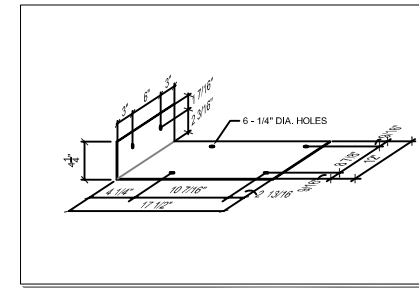
09 SPLITTER MOUNTING DETAIL
SCALE: NONE



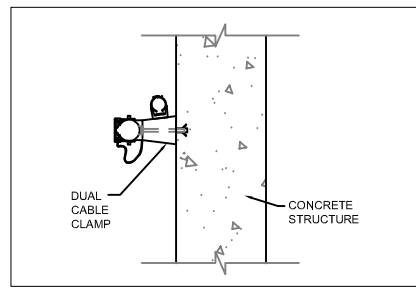
10 OMNI ANTENNA CEILING MOUNT BRACKET
SCALE: NONE



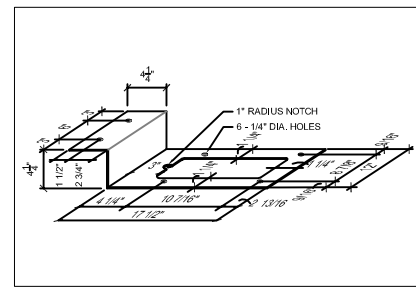
11 PANEL ANTENNA CEILING MOUNT BRACKET
SCALE: NONE



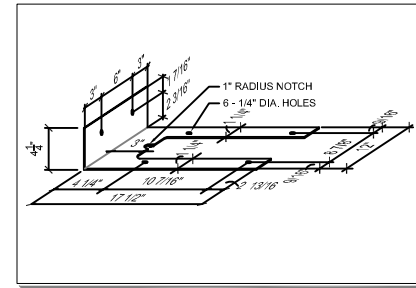
12 PANEL ANTENNA WALL MOUNT BRACKET
SCALE: NONE



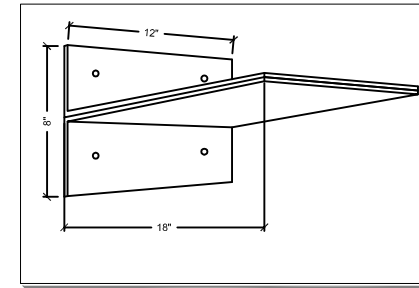
13 COAXIAL CABLE - DUAL CLAMP NOT USED IN PHASE 1 STATIONS
SCALE: NONE



14 PANEL ANTENNA CEILING MOUNT BRACKET
SCALE: NONE



15 PANEL ANTENNA WALL MOUNT BRACKET
SCALE: NONE



16 PANEL ANTENNA DOUBLE LEXAN BRACKET
SCALE: NONE

MOUNTING BRACKET LEGEND

INSIDE REVEAL MOUNTING			
COAXIAL CABLE SIZE	SCREW TYPE	ANCHOR TYPE	CLIC-X PART NUMBER
1/2" CABLE	CAP SCREW 1" 18-8	1/4" - 20 1"	CLIC-X #15
7/8" CABLE	CAP SCREW 1" 18-8	1/4" - 20 1"	CLIC-X #28
1 1/4" CABLE	CAP SCREW 1" 18-8	1/4" - 20 1"	CLIC-X #32
OUTSIDE REVEAL MOUNTING			
COAXIAL CABLE SIZE	SCREW TYPE	ANCHOR TYPE	CLIC-X PART NUMBER
1/2" CABLE	TAPCON SCREW 1 1/4"	-	CLIC-X #15
7/8" CABLE	TAPCON SCREW 1 1/4"	-	CLIC-X #28
1 1/4" CABLE	TAPCON SCREW 1 1/4"	-	CLIC-X #32

HARDWARE LEGEND

ITEM NAME & SIZE	LENGTH	DRILL	PART NUMBER
CAP SCREW 1/4" - 20	1"	1"	92240A542
SCREW ANCHOR 1/4" - 20	1"	3/8"	97082A150
TAPCON CONC. SCREW 1/4"	1 1/4"	3/16" 1" DEEP	-
TAPPING SCREW 18-8 1/4" - 20	1"	-	90821A610

SHEET NOTES

- TAPCON CONCRETE SCREWS ARE USED. REFER TO INSTALL SPECIFICATION SHEETS.
- DROP IN ANCHORS AND MOUNTING BOLTS ARE USED. REFER TO INSTALL SPECIFICATION SHEETS.
- SELF TAPPING SCREW. REFER TO INSTALL SPECIFICATION SHEETS.



REV	DESCRIPTION	DATE
AS BUILT INITIAL RELEASE		23MAR12
AS BUILT REVISION-A		02OCT12
AS BUILT REVISION-B		17JAN13

PROPRIETARY

DESIGNED :	JK
DRAWN :	RL
CHECKED :	JK
APPROVED :	RD
ISSUED :	20APR10

FULL SIZE ARCH D 24x36 DRAWING



WMATA - WCI

STATION NAME

NAVY YARD

DRAWING TITLE

A&E DETAILS

REFERENCE MAP

NONE

SHEET NUMBER

6.00
CWS



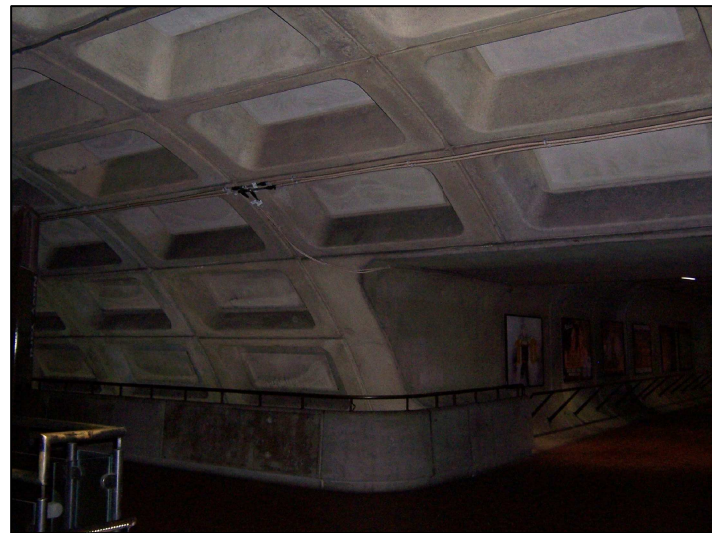
01 AS BUILT CWSF05-W PANEL ANTENNA - WALL MOUNT
SCALE: NONE



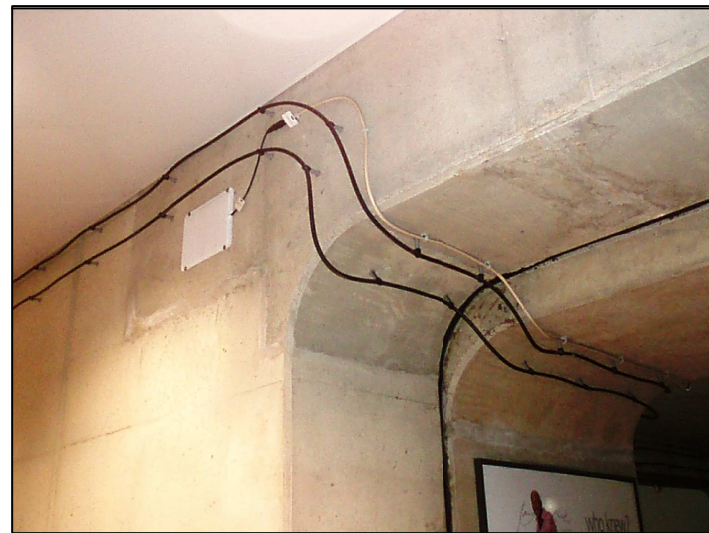
02 AS BUILT CWSF05-W RHG LOCATION
SCALE: NONE



03 AS BUILT CWSF05-W CABLE RUN
SCALE: NONE



04 AS BUILT CWSF05-W CABLE RUN
SCALE: NONE



05 AS BUILT CWSF05-W PANEL ANTENNA - WALL MOUNT
SCALE: NONE



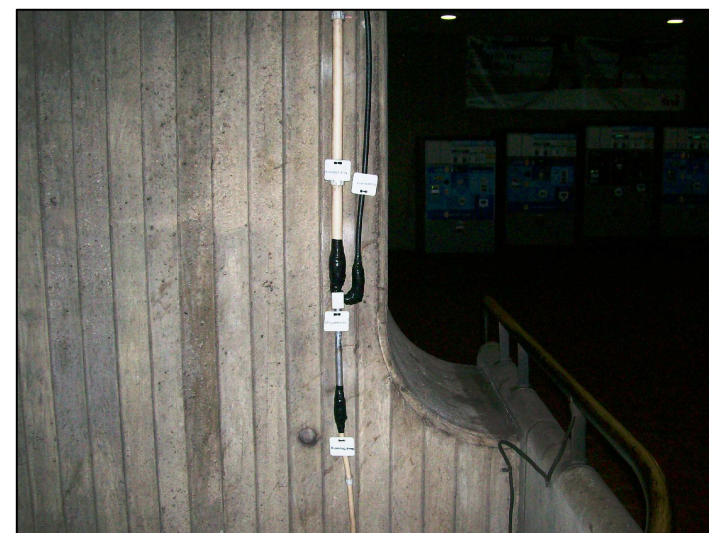
06 AS BUILT CWSF05-W OMNI ANTENNA - WALL MOUNT ON MEZZ
SCALE: NONE



07 AS BUILT CWSF05-E RHG LOCATION
SCALE: NONE



08 AS BUILT CWSF05-E PANEL ANTENNA - WALL MOUNT
SCALE: NONE



09 AS BUILT COAX CABLE TO CWSF05-E
SCALE: NONE



REV	DESCRIPTION	DATE
AS BUILT INITIAL RELEASE		23MAR12
AS BUILT REVISION-A		02OCT12
AS BUILT REVISION-B		17JAN13

PROPRIETARY

DESIGNED:	JK
DRAWN:	RL
CHECKED:	JK
APPROVED:	RD
ISSUED:	20APR10

FULL SIZE ARCH D 24x36 DRAWING



WMATA - WCI

STATION NAME

NAVY YARD

DRAWING TITLE

PICTORIAL VIEWS

CWS

REFERENCE MAP

NONE

SHEET NUMBER

7.00
CWS



01 AS BUILT CWSF05-E OMNI ANTENNA - WALL MOUNT
SCALE: NONE



02 AS BUILT CWSF05-E OMNI ANTENNA - CEILING MOUNT
SCALE: NONE



03 AS BUILT BBU F05-W - ROOM C215
SCALE: NONE



04 AS BUILT BBU F05-E - ROOM 218
SCALE: NONE



REV	DESCRIPTION	DATE
AS BUILT INITIAL RELEASE		23MAR12
AS BUILT REVISION-A		02OCT12
AS BUILT REVISION-B		17JAN13

PROPRIETARY

DESIGNED:	JK
DRAWN:	RL
CHECKED:	JK
APPROVED:	RD
ISSUED:	20APR10

FULL SIZE ARCH D 24x36 DRAWING



WMATA - WCI

STATION NAME

NAVY YARD

DRAWING TITLE

PICTORIAL VIEWS

CWS

REFERENCE MAP

NONE

SHEET NUMBER

7.01
CWS

18 OF 18