

Metro's

Meet the Primes

Thank you for Joining Us! We will begin in a moment.



Welcome & Announcements



Meshelle M.V. Howard, MCA
Director, Small Business Programs Office
Department of Finance

Introducing Our Speaker:



Norie Calvert

Director, Contract Support and Market Outreach

Project Development

Upcoming Capital Projects

June 5, 2025

Norie Calvert

Director, Contract Support and Market Outreach

Project Development



Capital Program Overview

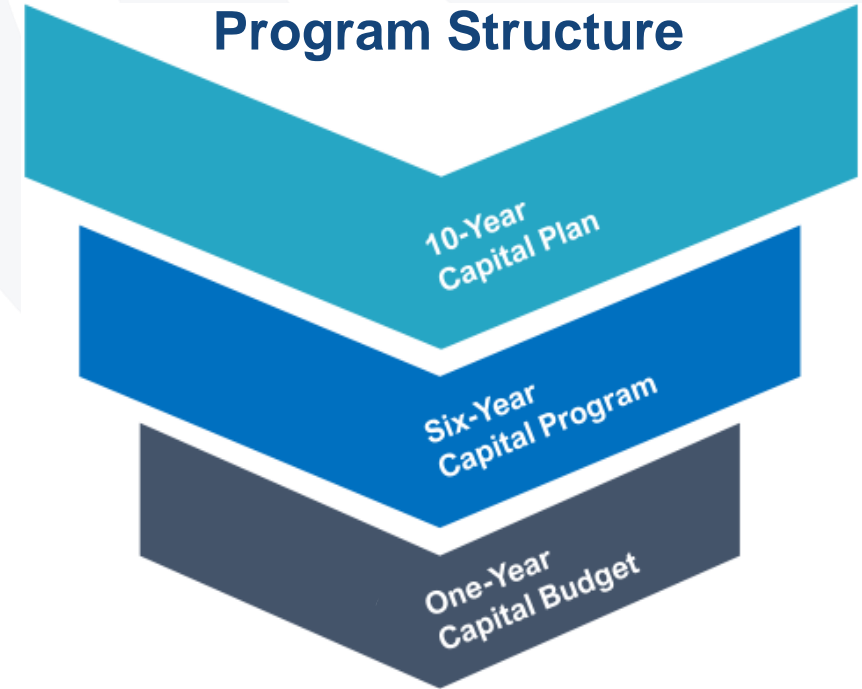
Metro's Capital Improvement Program

Metro advances capital projects and annual capital maintenance programs to restore, sustain, and modernize the system. The program also includes annual preventive maintenance transfers from the operating budget.

- Invest in the system to modernize and provide safe, efficient, and reliable service for customers, employees and the region
- Address the backlog of overdue state of good repair needs
- Sustain safety and reliability through recurring maintenance, rehabilitation, and replacement programs
- Maintain financial stewardship and ensure audit compliance
- Reduce capital administrative expenses
- Support a sustainable and more equitable future for the region

Capital Improvement Program Update

Metro's Capital Program Structure



10-Year Capital Plan

Identifies viable initiatives to address needs identified for next ~10 years; financially unconstrained

Six-Year Capital Improvement Program

Capital investments anticipated for, or continuing in, six-year capital program

One-Year Capital Budget

Expenditure forecast for capital projects and programs in current budget year

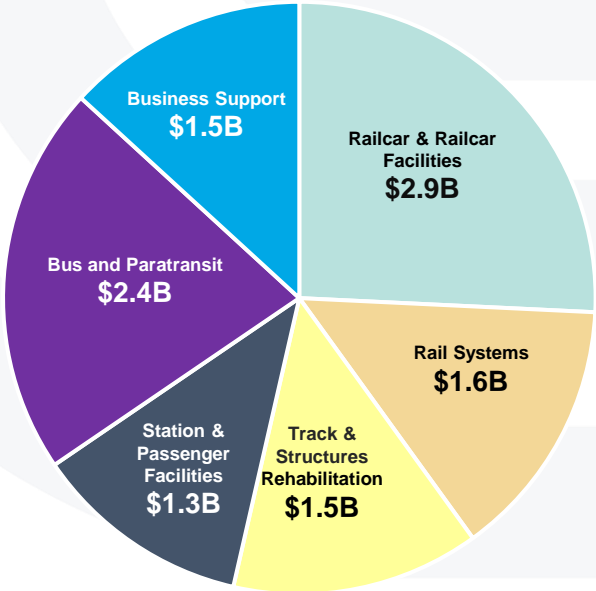


FY2025-2030 Capital Program Continues Investment in State of Good Repair, Reliability, and Modernization

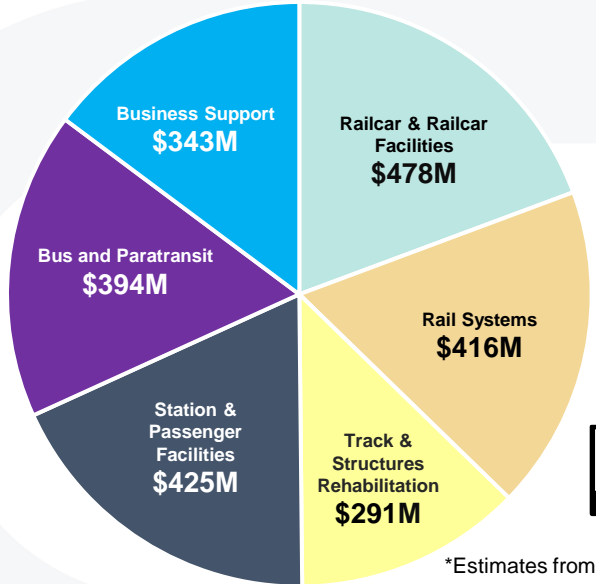
Major reinvestment will continue across ongoing programs and projects, including:

<ul style="list-style-type: none">• Bus Vehicle Replacement and Rehabilitation	<ul style="list-style-type: none">• Critical structural and bridge rehabilitation
<ul style="list-style-type: none">• Bladensburg & Northern Bus Division Replacements and Zero Emission Conversion	<ul style="list-style-type: none">• Track rehabilitation
<ul style="list-style-type: none">• Zero emission bus conversion at Cinder Bed	<ul style="list-style-type: none">• Fare systems modernization
<ul style="list-style-type: none">• Bus shelter replacements	<ul style="list-style-type: none">• Radio replacement and fiber installations
<ul style="list-style-type: none">• MetroAccess vehicle replacement	<ul style="list-style-type: none">• Water leak mitigation on Red Line
<ul style="list-style-type: none">• 8000 Series Railcars (legacy vehicle replacement)	<ul style="list-style-type: none">• Enterprise Resource Planning System Modernization
<ul style="list-style-type: none">• State of good repair investments in signaling system	<ul style="list-style-type: none">• Stadium Armory Bridge/Junction Pocket Track
<ul style="list-style-type: none">• Planning, engineering and pilots for signal system modernization and platform screen doors	<ul style="list-style-type: none">• Railcar maintenance facility rehabilitation and modernization

Six-Year Investment* by Category (\$11B)



FY2025 Forecasted Investment* by Category (\$2.3B)



*Estimates from July 2024

Upcoming Projects

- Grosvenor-Strathmore Platform Reconstruction
- L'Enfant Plaza Access Improvements
- Permanent Generator System Replacement – 19 Sites
- Traction Power State of Good Repair – Contract 2
- Metro Training Center
- Structural Rehabilitation Project – Package B
- Station Standpipe – 4 Locations
- Back-Up MICC at CTF

Active Opportunities



● Grosvenor-Strathmore Platform Reconstruction

- The Grosvenor-Strathmore Station platform is showing advanced deterioration due to wear and tear combined with exposure to weather and de-icing agents.
- WMATA will be seeking a design-build contractor to rehabilitate expansion joints, structural edge replacement, platform tiles/granite edge and edge light replacements.

Delivery Method: Design-Build (DB)

Anticipated Schedule: Active - Bids due July 17, 2025

Estimated Contract Budget: \$12M - \$15M



KEY PROJECT

● Traction Power State of Good Repair - Contract 2

- Rehabilitation and upgrade of approximately 12 Traction Power Sub-Stations, 4 Tie Breaker Stations, and 1 DC Switchboard Room at various locations within Maryland, Virginia, and the District of Columbia.
- Additional scope elements include updates to the SCADA, mechanical, and fire suppression systems at these locations

Delivery Method: Design-Bid-Build (DBB)

Anticipated Schedule: Active – Bids due July 31, 2025

Estimated Contract Budget: \$150M - \$170M



KEY PROJECT

Upcoming Opportunities



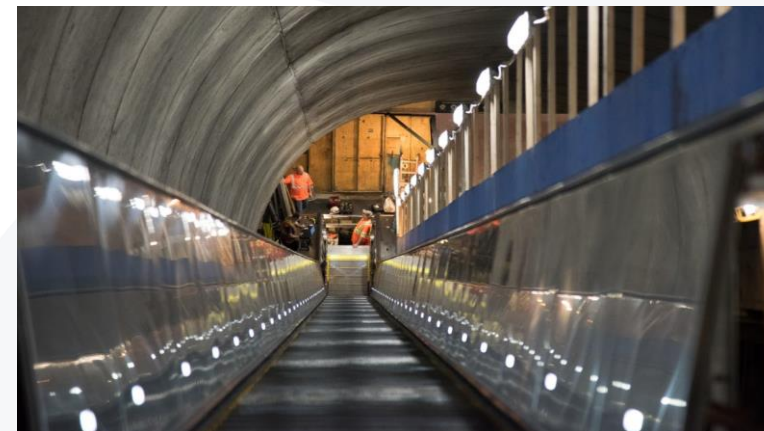
1 L'Enfant Plaza Access Improvements

- Removal of three existing escalators and replacing them with a new staircase oriented in the opposite direction as the existing elevators to improve the pedestrian flow between the two levels at the East Mezzanine area of the station and to make room for the installation of a new elevator

Delivery Method: Design-Build (DB)

Anticipated Schedule: Summer 2025

Estimated Contract Budget: \$5M - \$10M



② Permanent Generator System Replacement w/ AC Room Upgrades

- Replacement of permanent diesel generators identified as priority locations based on limited replacement part availability that affects equipment functionality and maintainability.
- These generators range from 50kW to 600kW and are connected to various electrical systems supporting Metro stations, Parking, and Bus Garages.
- Replacement of AC Switchgear equipment at 3 Metro Stations.

Delivery Method: Design-Build (DB)

Anticipated Schedule: Fall 2025

Estimated Contract Budget: \$20M - \$25M



KEY PROJECT

3 Metro Training Center

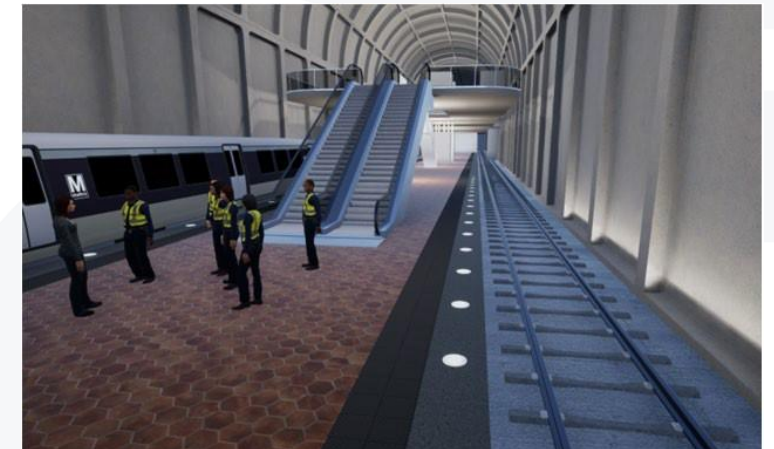
- The facility will centralize and consolidate operator, maintenance, police, safety, and emergency management training functions, enhancing operational readiness and workforce development.
- The selected CMAR will collaborate with the design contractor to ensure constructability, cost efficiency, and schedule alignment throughout the design phase.
- GAEC services anticipated for **existing condition assessment, site-specific designs, and Engineer of Record Support services.**

Delivery Method: Construction Manager at Risk (CMAR)

Anticipated Schedule: Spring 2025 (Design), Summer 2025 (CMAR)

Estimated Design Task Order Budget: \$14M-\$17M

Estimated Contract Budget: Preconstruction Services \$2M-\$4M,
Construction \$55M-\$62M



KEY PROJECT

4 Structural Rehabilitation Project – Package B

- Design and Construction for the rehabilitation of multiple aerial structures.
- Rehabilitation includes bearing **replacements, concrete repairs, joint seal replacement, and other structural work** to bring aerial structures to a state of good repair

Delivery Method: Design-Build (DB)

Anticipated Schedule: Fall 2025

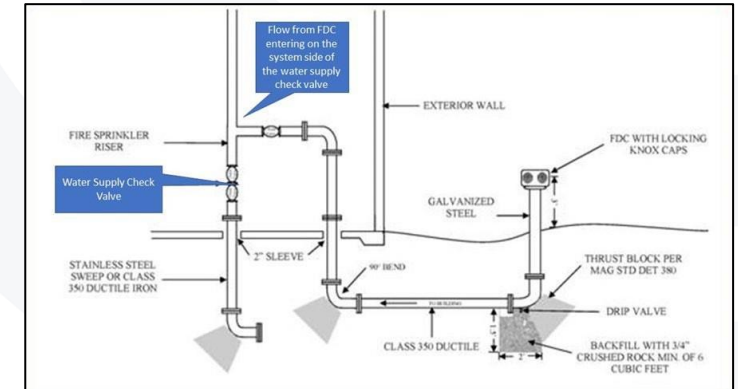
Estimated Contract Budget: \$27M-\$32M



KEY PROJECT

5 Station Standpipe - 4 Locations

- Four locations have been identified for partial standpipe replacements to serve the confines of these underground stations.
- Locations: Stadium Armory Station, Smithsonian Station, Eastern Market Station, and Grosvenor-Strathmore Station.
- Scope includes replacement of dry standpipe from grade level to water service rooms within the stations. The standpipe will be rerouted to allow for the replacement of buried sections of standpipe feeders.



Delivery Method: Design-Bid-Build (DBB)

Anticipated Schedule: Winter 2026

Estimated Contract Budget: \$3.5M-\$5M

KEY PROJECT

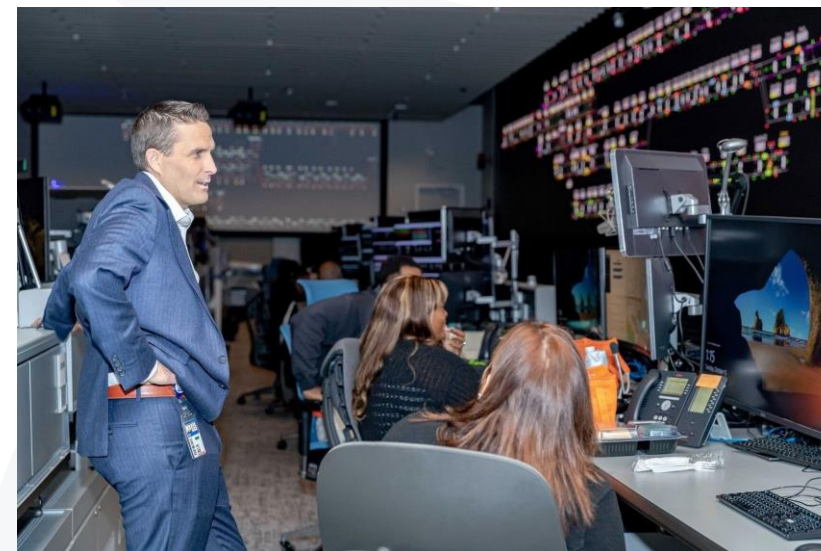
⑥ Back-Up MICC at CTF

- The Metro Integrated Command and Communications Center (MICC) is Metro's primary operations center:
 - It combines capabilities from Bus, Rail, Infrastructure, Safety, Power, and Critical Desks
- GAEC services anticipated for **existing condition assessment, site-specific designs, and Engineer of Record Support service to retrofit backup MICC to meet the operational requirements.**

Delivery Method: Design-Bid-Build (DBB)

Anticipated Schedule: Summer 2025 (Design)

Estimated Design Task Order Budget: \$1.0M - \$1.5M



KEY PROJECT

Get in Touch

WMATA Supplier Portal

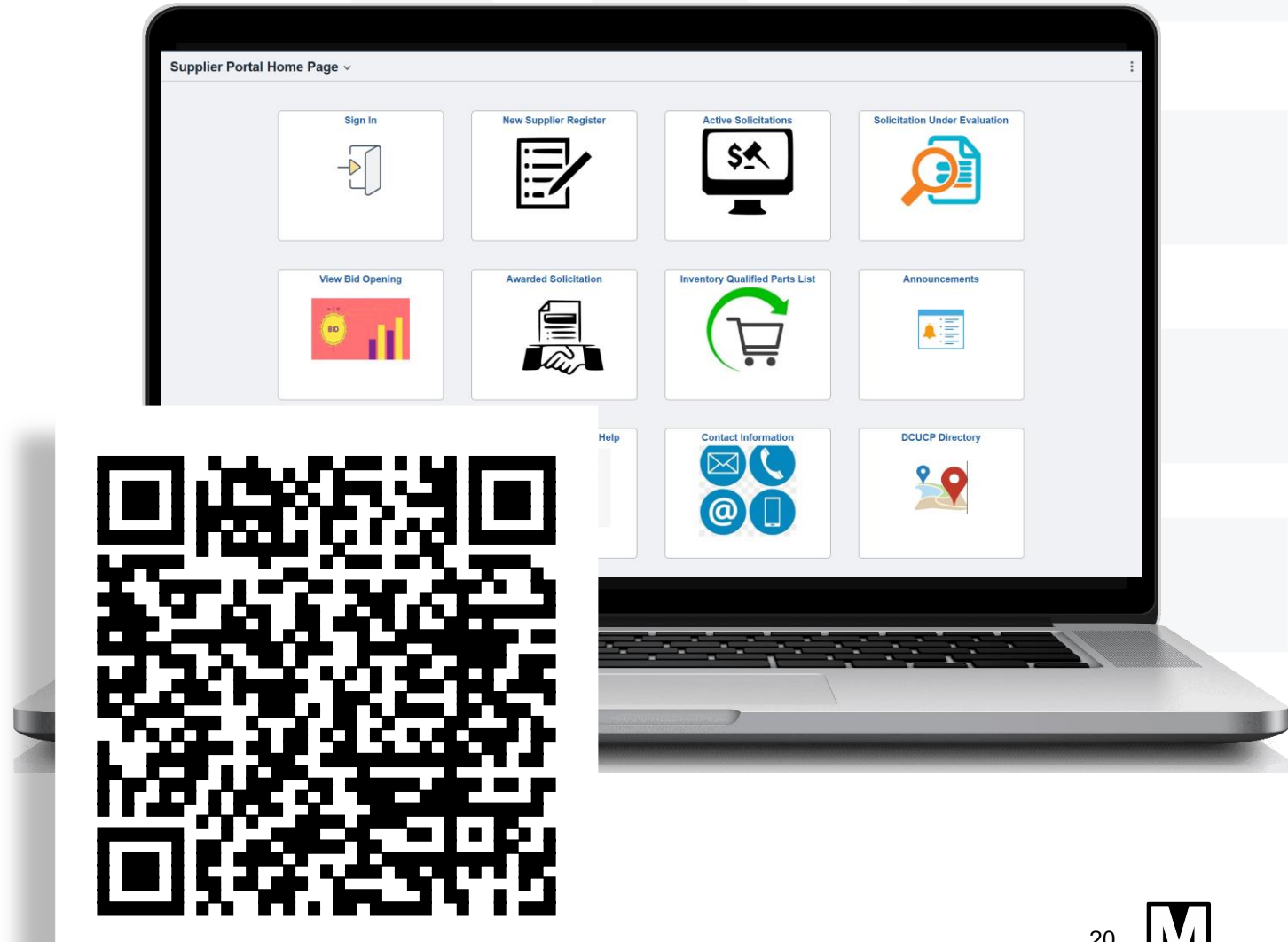
Register and create a profile to stay up to date on all communications and activities related to doing business with WMATA.

- Monitor invoice statuses in real-time;
- View order summary and WMATA's receipt of your orders;
- Search, review, and respond to solicitations (IFBs, RFPs, and RFQs)
- Take Supplier Portal training.

Get in Touch:

Market Outreach

- Email: MetroMarketOutreach@wmata.com



Capital Project Opportunities Quarterly Newsletter

Sign-up to receive **Metro's Capital Project Opportunities Quarterly Newsletter**

Most Recent Issue: March 2025

Next Issue: June 2025

- Information on active and prospective procurement capital project opportunities
- Messages from our procurement team
- Upcoming engagement events
- Guidelines for working with Metro



Questions?

Washington Metropolitan
Area Transit Authority

Introducing Our Prime:



A complex, abstract pattern of thin, light-gray lines crisscrosses the left side of the slide, creating a web-like or geometric structure that tapers towards the right.

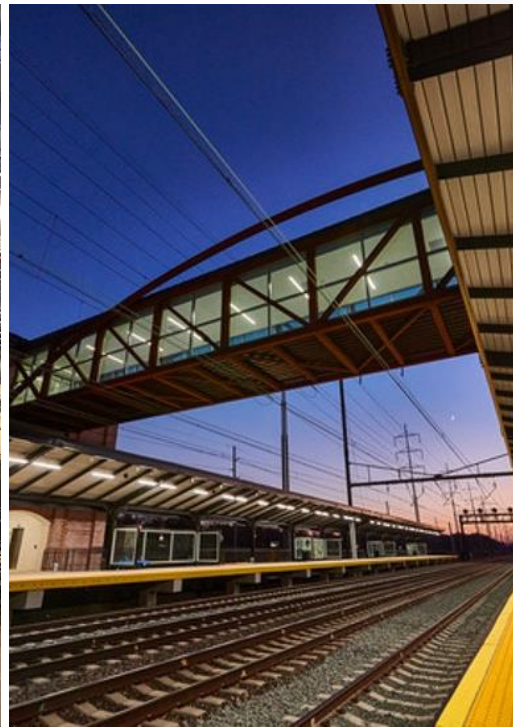
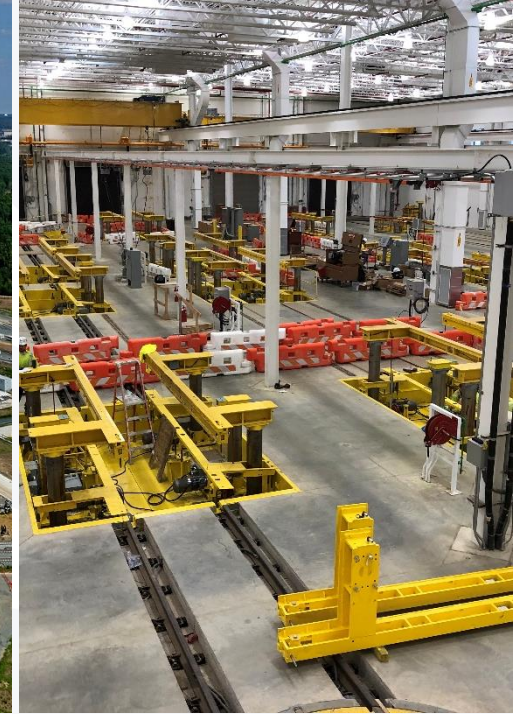
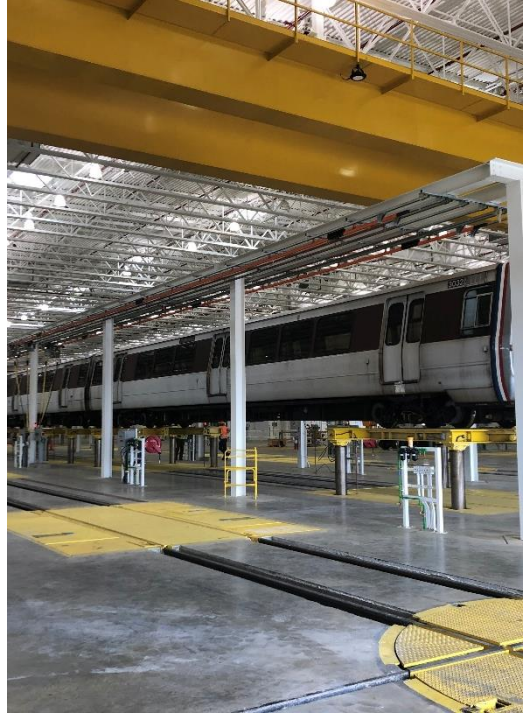
Meet the Primes

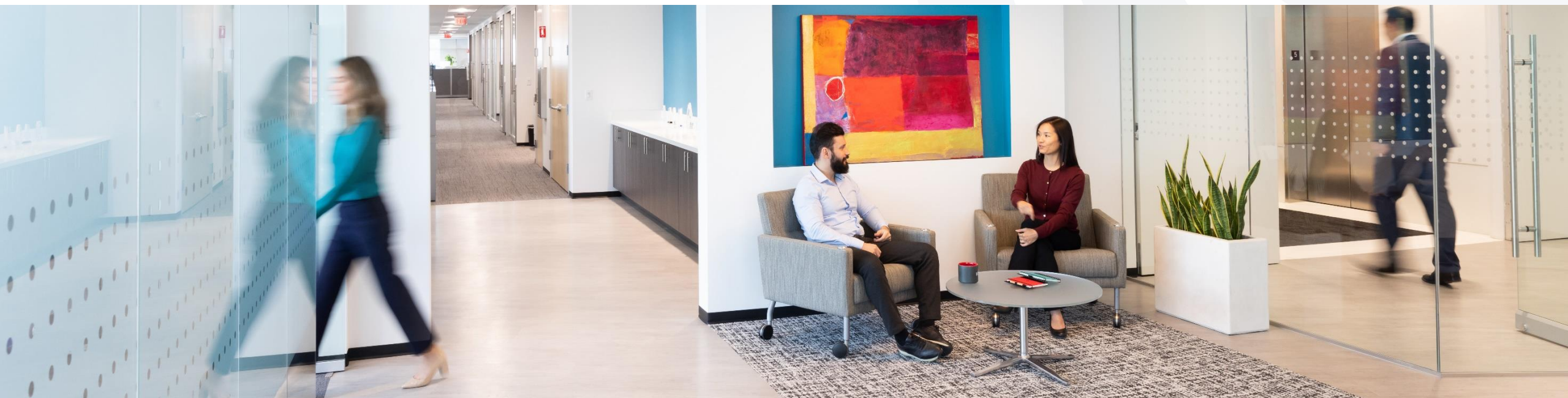
*WMATA's Small Business Programs
Office*

June 5, 2025

AGENDA

- 01 Introductions
- 02 Contracting Opportunities
- 03 How to Get Started
- 04 Support & Resources
- 05 Questions
- 06 Follow Up





Introductions

Our PM/CM Leadership



Pat Porzillo, PE
PM/CM Program Director

HDR



**Serese Aranha-Scott, PE,
PTOE**
Subcontracting Liaison

HDR



VJ Rathburn, PE
Program Management Lead

HDR



Thomas Perry, PE
Engineering Support Lead

HDR



Shyam Kannan, AICP
Client Manager

HDR



Darrell Mobley
*Regional Business
Development Lead*

HDR



Ray Deering, CCM, DBIA
*Construction Management
Lead*

JMT



Cliff Roberts, PE
Engineering Support

JMT



Matt Tucker
*Global Transit
Director*

HDR

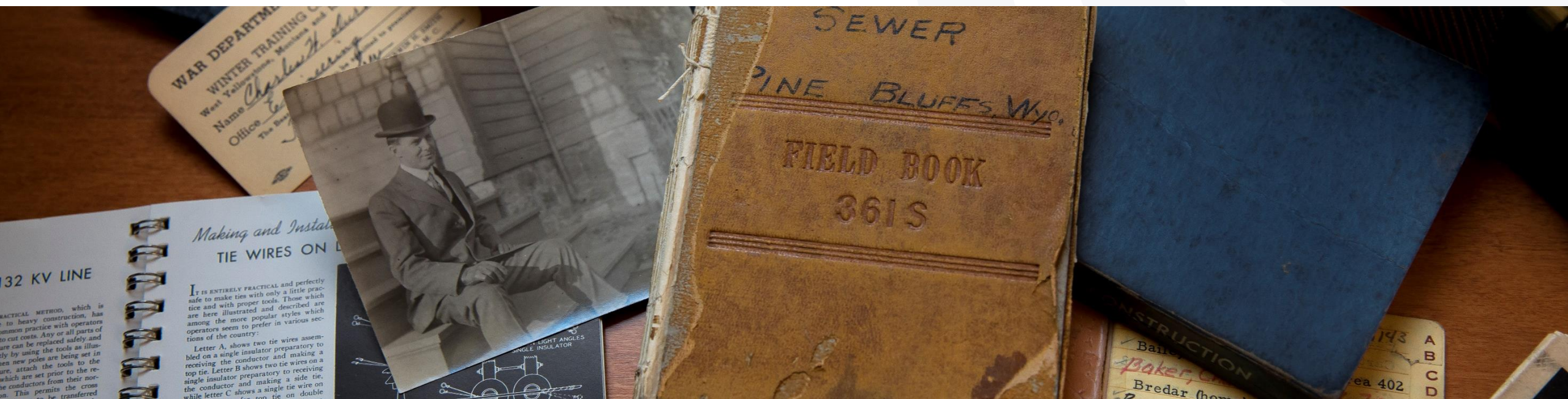
Today's Presenters



Serese Aranha-Scott, PE, PTOE
Subcontracting Liaison



Thomas Perry, PE
Engineering Support Lead



About Us

About HDR

1917

Year established

107

Years of pushing boundaries

500+

Transit Professionals

Our Impact

13K+ Employees worldwide

200+ Offices around the globe

15 Countries

17 Markets we serve

25 Envision®-Verified projects
(more than any other firm)

About JMT

1971 Year established

2.5K+ Employees worldwide

100% Employee owned

#50 ENR Top Design Firms

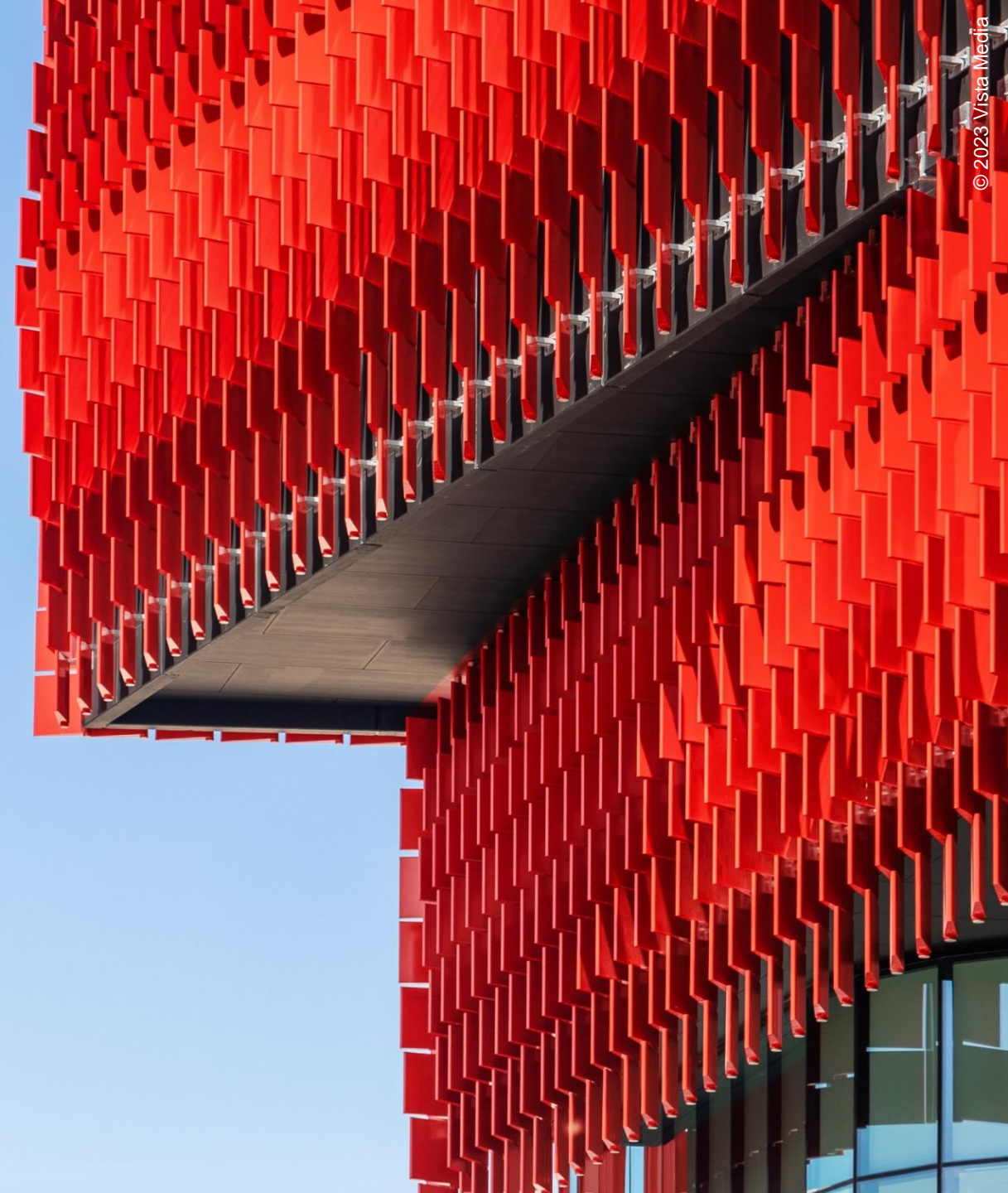
As of December 13, 2024

HDR Awards & Rankings

Engineering News-Record, 2023-2024

- #6 Top 500 Design Firms
- #5 Top 20 in Transportation
- #6 Top 20 in Water
- #5 Top 25 in Mass Transit & Rail**
- #7 Top 20 in General Building
- #8 Top 50 Designers in International Markets
- #9 Top 100 in Green Buildings Design Firms

As of May 14, 2024





Contracting Opportunities

Our Clients

Our Clients

We have various contracts with the agencies shown on the right



The U.S. Government





How to Get Started

Our Goal

- Meaningful Roles
- Preferred Consultant
- Repeat Business





Support & Resources

Supplier Diversity and Small Business Statement

Across HDR, we make seamless integration possible. With our responsive nature and relentless focus to every project and providing our clients with innovative solutions, we are invested in building trusted, collaborative, and inclusive relationships with small and diverse business partners on our teams. Our approach goes beyond just meeting minimum contract requirements, we value our small and diverse partners for the expertise they bring to the projects and contributions to our teams. We are all in this together with a commitment to sustainable business practices and the betterment of our communities, economy, and environment.

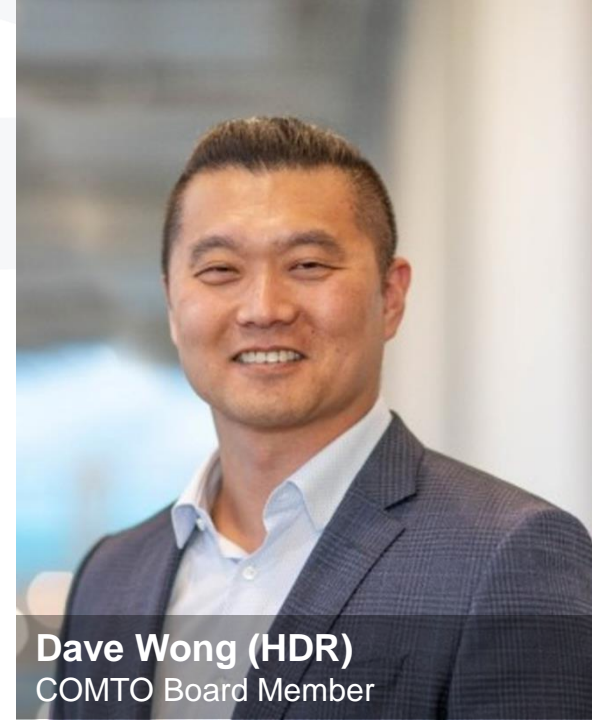
HDR strives to afford every practicable opportunity to small and diverse businesses to participate on our contracts. We continually seek to identify potential partners including:

- *Small Business (SB)*
- *Small Disadvantaged Business (SDB)*
- *Disadvantaged Business Enterprise (DBE)*
- *Women-Owned Small Business (WOSB)*
- *Women Business Enterprise (WBE)*
- *Minority Business Enterprise (MBE)*
- *Veteran-Owned Small Business (VOSB)*
- *Veteran Business Enterprise (VBE)*
- *Service-Disabled Veteran-Owned Small Business (SDVOSB)*
- *Lesbian, Gay, Bisexual, and Transgender Business Enterprise (LGBTBE)*
- *HUBZone (HUBZ) (SBA and State)*

With a culture that embraces supplier inclusion, diversity and equity, we create an unshakable foundation for progress. At HDR, we do things right to make great things possible.

- John Henderson, Chief Executive Officer

Inclusion, Diversity & Equity



Dave Wong (HDR)
COMTO Board Member

National Supplier Diversity Small Business Program (Federal)

Key Contacts



Edie Fiske
Program Manager
719.272.8995 | edie.fiske@hdrinc.com



Nancy Perusich
Program Specialist
816.360.2779 | nancy.perusich@hdrinc.com



HDR/JMT WMATA PM/CM Spring Teaming Summit

March 21, 2025

Let's Connect!



Questions?



Thank you!

Contact

Serese Aranha-Scott, VP
serese.aranhascott@hdrinc.com | 301.289.7236

Thomas Perry, PE
thomas.perry@hdrinc.com | 202.403.4822

Introducing Our Prime:



Who is STV

Metro Meet the Prime

June 5, 2025



STV Overview

Founded more than 100 years ago, STV is a leader in providing engineering, architectural, planning, environmental & program management/construction management services for transportation systems, infrastructure, buildings, energy & other facilities.



3,200+

Total Staff

60+

Total Offices

34th

ENR's Top 500
Design Firms

11th

ENR's Transportation
Category

Meet the STV Team



Tara Soesbee



Alfonso Ronca



Saba Gyemfi



Jason Mumford

Our Attributes



INNOVATION:
New Experts
New Services
New Tools

+



Adding Value
to Existing and
New Clients

=



Accelerator for
Revenue Growth



Why Work with STV?

STV Services – Vehicles



- Overhaul Technical Support
- ZE Technology
- Vehicle Assessment
- Procurement Support
- Operational Feasibility
- Technical Specification Development
- Bid Evaluation
- ADA conformity
- Design Reviews
- In-Plant Inspection & Oversight
- Testing Supervision
- Acceptance Testing
- Commissioning

STV Services – Engineering



- Systems
- Communications
- Bridge
- Track
- Architecture (stations, vertical, infrastructure)
- Electrical
- Mechanical
- Utility Design & Coordination
- Tunnel & Underground Structures

STV Services – Planning



- Project Delivery
- NEPA
- BRT
- Heavy Rail
- FTA CIG Programming
- Funding & Grants
- Service Planning
- Station Planning
- Sustainability & Resiliency
- Policy Planning
- Asset Management

Vehicle Engineering Services

8000 Series Support

- Procurement support
- Engineering
- Testing

7000 Series

- Back-to-back wheel inspection
- Periodic maintenance inspection oversight



Vehicle Engineering Services

6000 Series

- Digital Screens specification support
- Engineering brackets for forward facing cameras
- Installation inspection for the Video Surveillance System

3000 & 6000 Series Support

- Converter Function Modules
- Impeller Blades cracks repair vs. replacement study
- Audit of the periodic inspection procedures

Bus GEC work



Program & Construction Management

- Awarded PMCM IDIQ Contract in 2024 with JV partner AECOM
- Contract is 7-year length
- Eligible to bid on Task Orders in the following technical categories:
 - Buildings & Facilities
 - Civil & Structures
 - Communications
 - Heavy Mechanical
 - Power Systems
- Team includes 32 subcontractor firms includes 25 DBE firms
- Current TO awards include CCPM-0015 & PESC-0002
- Frequent communication of TO opportunities to our subconsultant partners



General Architectural & Engineering Services

- Awarded GAEC IDIQ Contract in 2025 with JV partner Parsons
- Contract is 5-year length
- Eligible to bid on Task Orders in the following technical categories:
 - Heavy Mechanical (Central Systems)
 - Buildings & Facilities
 - Signaling Systems
 - Communications
 - Civil & Structures
 - Power Systems (LV/HV, AC/DC)
- National expertise in systems & communications design for public transit



General Planning Services

- Awarded A/E Planning IDIQ Contract in 2025
- 5-year term
- Task orders focus on planning & concept engineering:
 - Stations & Passenger Facilities
 - Bus & Rail Maintenance Facilities
 - Transit Corridor Planning
 - State of Good Repair & Capital Planning
 - Supporting Systems & Civil Engineering Services
- Leverage STV national experience for alternative delivery & phased operations
- Reduce budget & schedule risk for WMATA
- Deliver high quality facilities & services to Metro customers



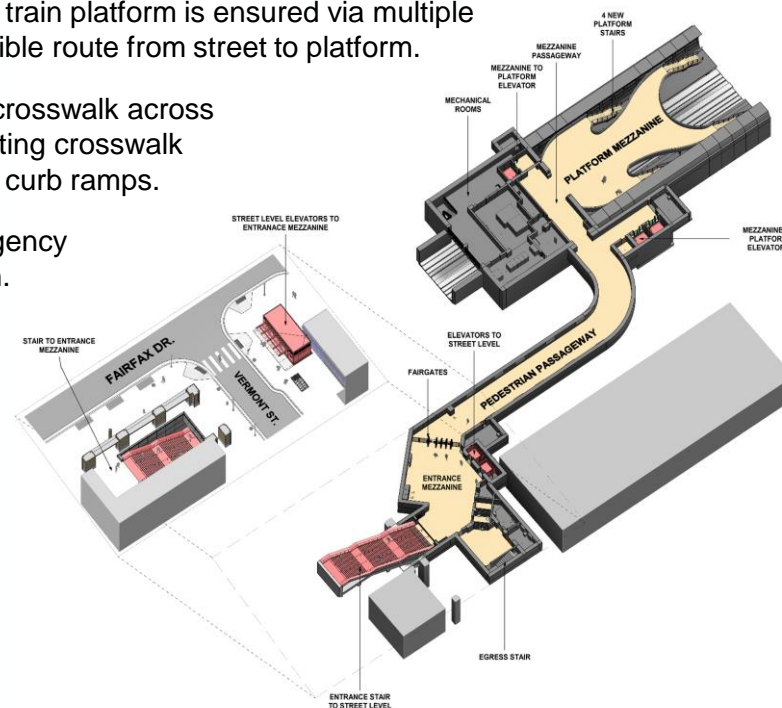
Public Engagement

- Awarded Platform Improvement Project in 2019 with JV partner AECOM
- Rehabilitated aging platforms & installed customer improvements at 20 outdoor Metrorail stations from 2019 to 2022
- Largest, most complex capital construction project since the Metrorail system opened
- Deployed comprehensive communications plan



Ballston-MU Metrorail Station West Entrance

- Project Coordination: Arlington County is leading the design and construction efforts in collaboration with the Washington Metropolitan Area Transit Authority (WMATA) and adjacent property owners. WMATA will own and operate the new west entrance as part of the Metrorail system.
- Subconsultants included small business partner - Sensis, ensuring compliance with DBE/SBE participation goals and maintaining effective communication across all project phases.
- The new entrance at the southwest corner of North Fairfax Drive and North Vermont Street features two street-level elevators and a stairway leading to an underground mezzanine passageway. From the mezzanine, access to the train platform is ensured via multiple elevators and staircases, providing a fully accessible route from street to platform.
- Pedestrian Infrastructure: Construction of a new crosswalk across North Fairfax Drive and improvements to the existing crosswalk on North Vermont Street, including reconstructed curb ramps.
- Emergency Egress: Provision of additional emergency exit capacity to enhance safety during evacuation.
- Community Engagement: The project has undergone public hearings and community engagement sessions to gather feedback and ensure the design meets the needs of local residents and stakeholders.





STV's Commitment to DBE Partnerships

Commitment to DBE Partnerships

Our DBE partners are an invaluable part of our team & task orders on:

- WMATA PM/CM IDIQ
- WMATA GPC IDIQ
- WMATA GAEC DIQ





Contact Us

Scot Sibert, South/Central Transit Market Lead
scot.sibert@stvinc.com

Alfonso Ronca, PMCM IDIQ Program Manager
alfonso.ronca@stvinc.com

Jason Mumford, GPC Program Manager
jason.mumford@stvinc.com

Thank You

Questions & Answers



Introducing Our Prime:

HATCH





Creating positive change together



WMATA Meet the Primes – June 5, 2025

Local Leadership



Chris Walker, PE
Business Director – Transit, DC Region



Weng Hung Kam, PE, RCDD
Systems Engineering Lead, DC Region



Who we are

Our vision

We are passionately committed to the pursuit of a better world through ***positive change***.

Our values

We believe in ***exceptional ideas*** delivered with ***exceptional service***.

Our mission

Together we create unprecedented outcomes for our clients by partnering with them to develop better ideas.

Our exceptional, diverse teams combine vast engineering and business knowledge, applying them to the ***world's toughest challenges***.

We build practical solutions that are ***safe, innovative, and sustainable***.



EMPLOYEE-OWNED

partners who
think like owners

10,000

professionals
worldwide

Projects in

150

countries

US\$75B

in projects

68 YEARS

of experience



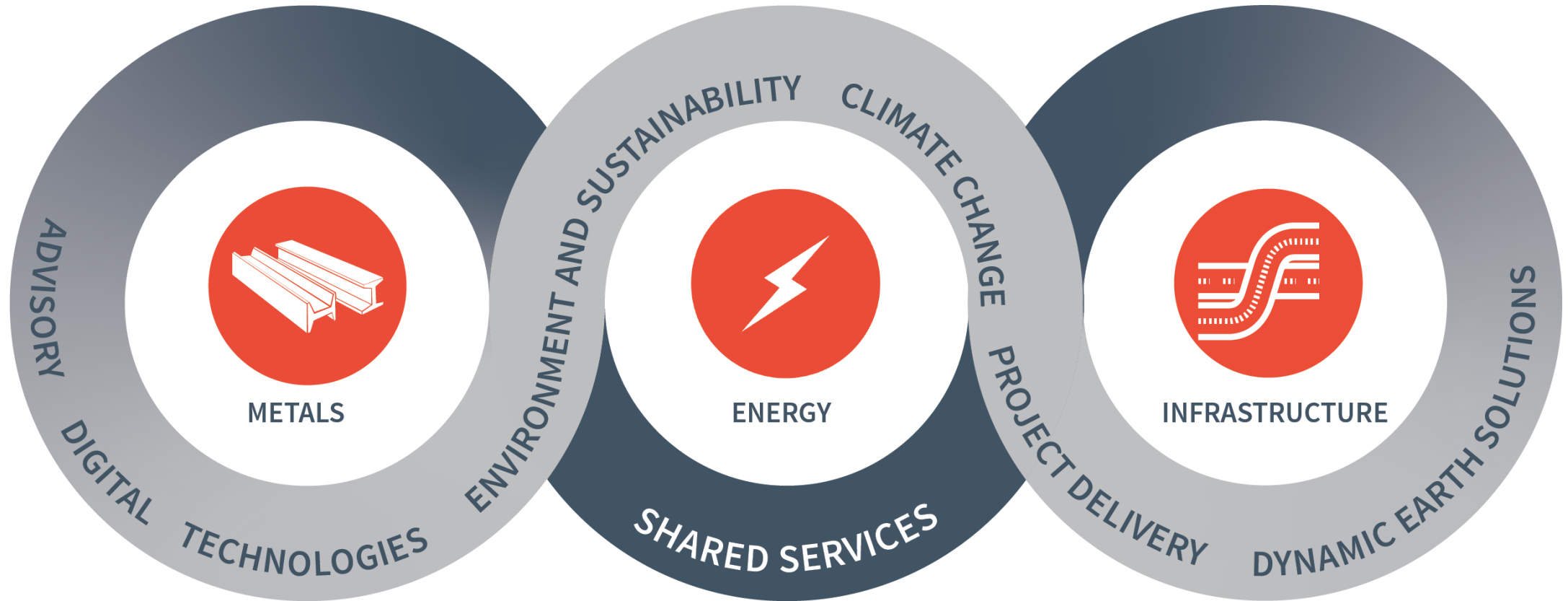
24 OFFICE LOCATIONS

Aliquippa
Ambler
Amherst
Atlanta
Baltimore
Boston
Brooklyn
Chicago
Columbus

Dallas
Denver
Houston
Los Angeles
Minneapolis
Newark
Oakland
Pittsburgh (GDC)
Portland

Rochester
Salt Lake City
Seattle
Tampa
Washington
White River

What we do



Infrastructure

Building to meet our global challenges

Transportation



Transit



Urban
solutions



Water



Infrastructure

Building to meet our global challenges

Transit



Data
analytics



Linear
infrastructure



Systems
assurance



Bus and zero
emissions



Rail systems



Rail vehicles
and operations



Stations
and facilities



Project development
and high-speed rail





Contracting Opportunities at WMATA



GAEC

Power

Signaling

Communications





Rolling Stock Support

7000 Series Procurement

8000 Series Procurement

Legacy Vehicle Engineering

Railroad Maintenance Machinery





PM/CM

Power

Signaling

Buildings/Facilities

HATCH

URBAN ENGINEERS

Copyright © Hatch 2025. All rights reserved.



Diversity and inclusion

We are committed to diversity and inclusion because a diverse and fully inclusive work environment fosters a plurality of thought and perspectives that solves challenging problems and creates value for our clients, our communities, and our world.



+
Thank you.

For more information,
please visit www.hatch.com

christopher.walker@hatch.com

wenghung.kam@hatch.com

Introducing Our Prime:

HNTB





Metro's SBPO Meet the Primes

June 5, 2025



Meet HNTB Today



Sara Benson

Deputy Program
Manager

SBenson@HNTB.com



Amanda Allen

Communications &
Government
Relations
Manager

AAllen@HNTB.com



Brandon Jones

Department
Manager - Program &
Project Management

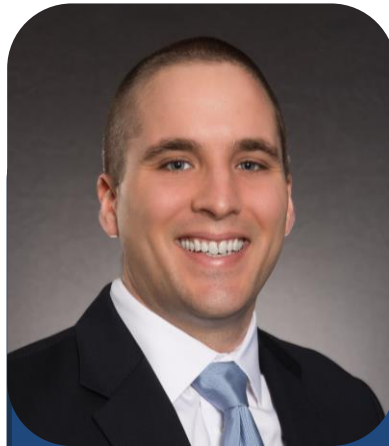
BJones@HNTB.com



Jarvis Alridge

Department
Manager –
Project Controls

JAlridge@HNTB.com



Jason Scofi

Deputy Program
Manager

JScofi@HNTB.com



Naveed Bandali

Project Controls
Manager & Deputy
Office Delivery
Manager

NBandali@HNTB.com

HNTB is built on more than 110 years of infrastructure solutions.

70
OFFICES NATIONWIDE

7,000+
EMPLOYEES NATIONWIDE

300+
LOCAL TRANSPORTATION PROFESSIONALS

100+
LOCAL SMALL BUSINESS PARTNERSHIPS



HNTB's Prime Contracts with Metro

Program Management, Construction Management
and Engineering Support Services (**PMCM**) IDIQ

General Architectural and Engineering Services
(**GAEC**) IDIQ

A/E General Planning Services (**GPC**) IDIQ

On-Call Planning Support Services (**Long Range**) IDIQ



Making Connections Possible

Markets and Services

Architecture
Aviation
Bridges
Construction Management
Design Build
Digital Infrastructure Solutions
Environmental Planning
Highways
Infrastructure and Mobility Equity
Tolls
Transit and Rail
Tunnels
Strategic Communications
Supply Chain Management
Water
Public Outreach & Stakeholder Engagement



Grow With HNTB

HNTB seeks strategic teaming partners with strengths in:

Pedestrian Simulation Modeling
Energy, Environment and Resiliency
Travel Demand/Trace Modeling
Station Architecture
Fire/Life Safety
Egress/Evacuation Assessments
Geotechnical Services
Cost Estimation
Scheduling
Risk Management
Quality
Architecture
Design
Technology/Software/Digital

Stay Connected with HNTB



HNTB's Digital Transformation Solutions Difference

While digital platforms & data strategies are playing an ever-important role in every industry, specific business drivers are impacting the transportation industry and the agencies that are responsible for its stewardship.

HNTB's robust network of Digital Transformation Solutions (DTS) professionals are equipped with the right skills and strategies to drive success in responding to these issues.



**Workforce Development and
Enterprise Efficiency**



**Enhanced Capital Program
Delivery**



Resiliency



**Emerging and
Enhanced Mobility**

Bringing People Together, Expanding Opportunity

HNTB's Partners Program is a yearlong, structured mentoring program between a small-to mid-sized business and a local HNTB office.

The program is customizable to meet the needs of the partner firm, such as:

- Sales and marketing
- Project management and delivery
- Business operations, leadership and organization
- Access to capital
- Technology
- Human resources
- Strategic planning



Partners Program Success

Bridgette Beato, CEO of Lumenor Consulting, participated in the Partners Program and served as a subconsultant to HNTB under the Metro PMCM IDIQ from 2018 to 2025.

Lumenor won its first prime contract with WMATA in 2024!

HNTB in Action



COMTO National

HNTB named
**2024
CORPORATION
OF THE YEAR**



Let's stay in touch



Visit our booth today



Scan the QR code to join our database



Come to an HNTB Small Business Happy Hour



Connect with us at industry events

Stay Connected with HNTB





Thank You!

HNTB

Join Us for Our Next Outreach:

Metro's Meet the Primes



METRO'S SMALL BUSINESS PROGRAMS OFFICE PRESENTS

Marketing & Branding 101: Branding and Marketing Essentials for the Construction and Trade Industries and beyond.

Join us virtually on Wednesday, June 11, 2025 | 10 a.m. - 12 p.m.

In a competitive market, having the right tools to build a solid brand and effective marketing strategy is essential—especially in the construction and trade industries. In Marketing & Branding 101, you'll learn the foundational principles of branding and marketing tailored to your industry. This session will cover how to better understand and connect with your target audience in order to craft marketing efforts that set your business apart. Whether you're just starting out or looking to elevate your business, this session will provide actionable insights to strengthen your brand and grow your business.

This event is in
collaboration with



Register for all
upcoming
outreaches below:

Space is limited, so reserve your spot now!



Thank you!

That concludes our presentations, we invite you to
network with our primes and exhibitors.

Washington Metropolitan
Area Transit Authority