

Rail Service Changes Effective June 22

Community Relations and Outreach



Major Service Changes for Customers

- Split Silver Line:
 - Every other Silver line train goes to New Carrollton instead of Downtown Largo, at all times.
- Expanded Weekend Hours:
 - Friday Close Hour Later at 2 AM
 - Saturday Open Hour Earlier at 6 AM
 - Saturday Close Hour Later at 2 AM
 - Sunday Open Hour Earlier at 6 AM
- Presentation covers external customer facing items:
 - Station Customer Wayfinding
 - Station Messages
 - Train Operator Announcements
 - Customer Outreach



FY26 Rail Service

Use efficiencies from rail automation and train length optimization to enable approximately more rail service with the same resources

- Provide additional peak capacity at key bottlenecks
- Improve access to destinations to drive further ridership growth

Most changes, except YL line change, takes effect Sunday June 22, 2025

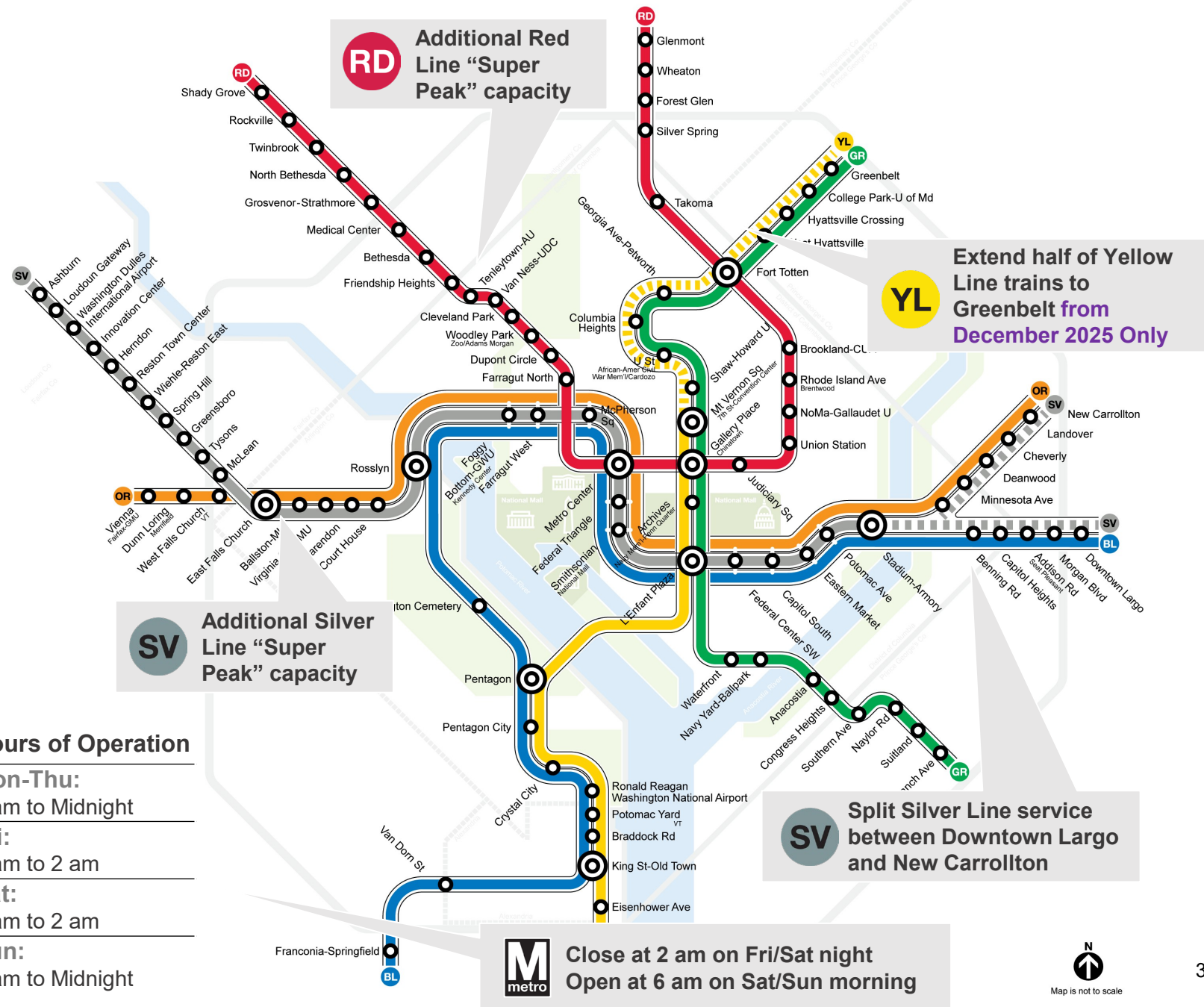
Hours of Operation

Mon-Thu:
5 am to Midnight

Fri:
5 am to 2 am

Sat:
6 am to 2 am

Sun:
6 am to Midnight



FY26 Rail Service Details



Red Line

Issue:

- Increasing rush hour ridership; projected crowding in both directions with continued growth.

Service:

- Higher “Super Peak” **4 min frequency** during the **busiest part of rush hour** (~40 mins) in both directions



Blue/Orange/Silver Lines

Issue:

- Increasing rush hour ridership; projected crowding in one direction through Rosslyn; imbalanced service east of Stadium-Armory.

Service:

- **Use Silver “Super Peak” trippers (2 trains)** to supplement service in the core during the busiest part of rush hour
- **Split Silver Line** between Downtown Largo and New Carrollton



Green/Yellow Lines

Issue:

- High and growing all-day ridership, serves regular events and airport trips.

Service:

- **Extend half of Yellow Line trains** to Greenbelt instead of terminating all Yellow Line trains at Mt Vernon Square
- **Service change only goes into effect from December 2025**



Systemwide

Issue:

Growing ridership requires increased capacity; the rail system opens late on weekends relative to peer transit systems and after ramp up in regional travel demand.

Service:

- Optimize mix of 6-car and 8-car trains to increase service capacity
- **Expand weekend hours:** Open at 6 am on Saturdays and Sundays, close at 2 am on Fridays and Saturdays

Station Supports

	Task	Duration
Station Customer Wayfinding	<ul style="list-style-type: none"> Digital Maps Updated Priority six stations for physical maps Staged replacements 	Throughout summer
Station Messages	<ul style="list-style-type: none"> PIDS (Passenger Information Display Screens) Digital Platform & Mezzanine Screens 	June 15 – 27 June 9 - 27
Train Operator Announcements	<ul style="list-style-type: none"> Silver Line heading eastbound announcements Stadium-Armory, L'Enfant, & Metro Center 	June 22 - 27



Beginning June 22, the Silver Line will serve New Carrollton as well as Downtown Largo.

wmata.com/changes



Item Tracker: Customer Outreach Tactics

June 2025 Rail Service Change

Tactic	Notes	Deadlines
Website Update wmata.com/changes	Rail Service Changes Better Bus Implementation Tap.Ride.Go.	June 2
Brochure	English & Spanish	June 9
Digital Signage	English & Spanish	June 9 - 27
Communications Toolkit	<ul style="list-style-type: none"> • Sample Newsletter • Social Media Language • Stakeholder Emails 	June 9
Social Media Graphics	<ul style="list-style-type: none"> • Expanded Weekend Hours • Silver Line Split at Stadium-Armory Station • Red & Silver Peak Service 	June 9 – 27
Rail Ambassadors/ MIPS/ MTPD	Along the Orange/Blue/Silver Lines <ul style="list-style-type: none"> • L'Enfant Plaza, Metro Center, Farragut West, Foggy Bottom, Stadium-Armory, & Smithsonian 	June 19 – 25

Website Updates

June 2025 Rail Service Change

- Item(s):
 - Press release (done): [Metro Board of Directors approves \\$4.957 billion FY2026 budget that improves service without raising fares | WMATA](#)
 - Banner on main page from early June until Phase 1 summer outage?
 - Trip Planner (updated)
 - Pages with rail hours:
 - <https://wmata.com/schedules/timetables/index.cfm>
 - <https://wmata.com/service/rail/>
 - [Parking | WMATA](#)
 - All first and last train times on station pages
 - System map pages: <https://wmata.com/schedules/maps/index.cfm?t=maps-rail-wrapper>

Increased Rail Service June 6 - 8

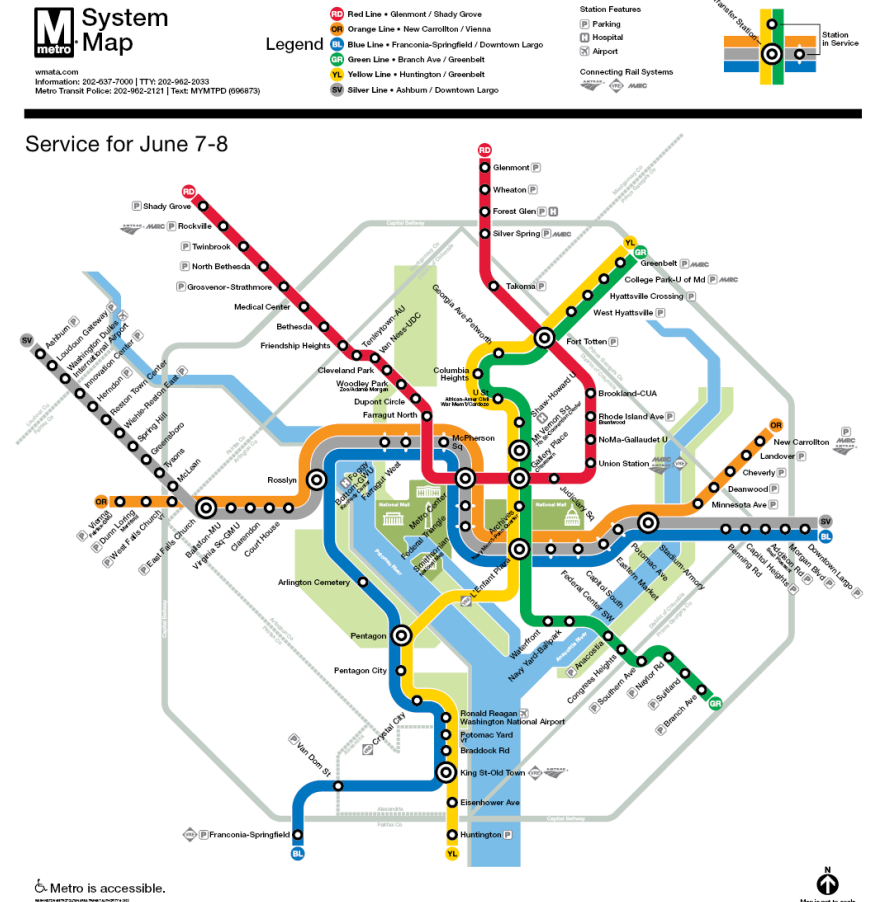
Metro Message
May 2025

Metro proudly welcomes the world.



On the last weekend of World Pride, Metro is increasing service with additional hours and extending the Yellow Line to the end of the line at Greenbelt on Saturday and Sunday.

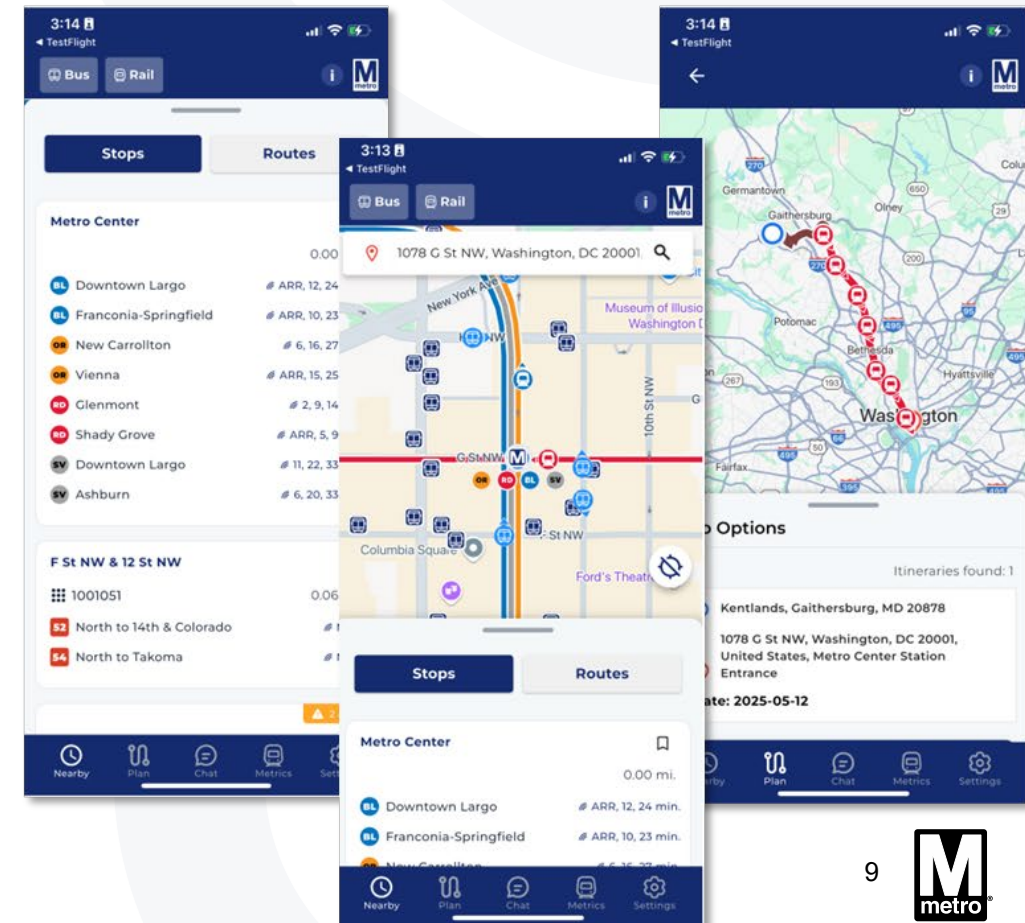
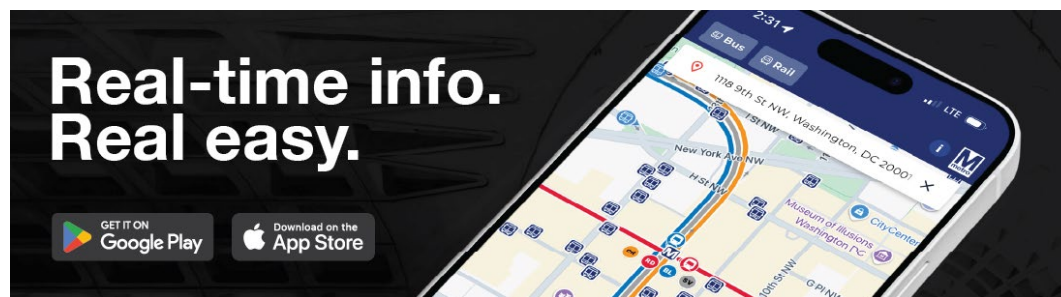
- Friday, June 6, Metro will close at 2 a.m.
- Saturday, June 7, Metro will open at 6 a.m. and close at 2 a.m.
- Sunday, June 8, Metro will open at 6 a.m. and close at midnight



Metro's New Mobile App: MetroPulse

Metro Message
May 2025

- MetroPulse is Metro's new mobile app that takes the guesswork out of riding Metro.
- Plan ahead, stay informed, and get where you need to go with features like:
 - *Real-time bus and train arrivals*
 - *Trip planner*
 - *Industry-leading chat with Customer Service*
 - *Info on nearby stations & stops*
 - *Service metrics*
 - *Alerts, maps & more*
- SmarTrip log-in to personalize your favorite routes, stops



Washington Metropolitan
Area Transit Authority

Summer 2025 Major Construction

Theresa Thomas
Work Planning and Maintenance Improvements, Major Outages,
Crew Support Services



RD OR SV BL YL GR metrobus Metro Access



Summer 2025 Major Construction: Phase 1

Metro Message
May 2025

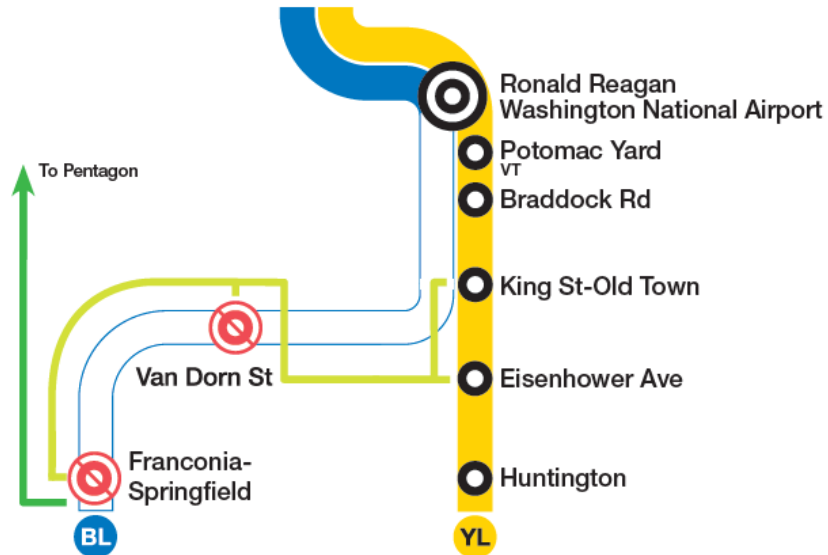
Station Impacts: Franconia-Springfield & Van Dorn St stations will be closed from July 5 - 26, 2025

Free Shuttle Bus Service:

Franconia-Springfield, Van Dorn St, Eisenhower, & King St-Old Town

Weekend Single Track: Braddock Rd to Huntington July 12-13 & July 19-20

Free Parking at Franconia-Springfield & Van Dorn St



Planned Work

- Train Control Room renewal between Telegraph Road and Franconia-Springfield. Replace an obsolete signal system to serve as a bridge to a potential next-generation signaling system.
- Interlocking renewal at Van Dorn. Rail renewal, tie replacement, ballast tamping, and grout pads of the rail infrastructure.
- Re-lamping and repairing lighting - roadway and non-roadway, and the ETS circuits.
- Roof replacement at the station platform service building.
- Station signage updates and station repairs – both interior and exterior.

For more information check out,
wmata.com/phase1.

Summer 2025 Major Construction: Phase 2

Metro Message
May 2025

Station Impacts: Branch Ave, Suitland, Naylor Rd will be closed from August 2-31, 2025

Free Shuttle Bus Service:

Branch Ave to Southern Ave stations

Weekend Shutdown Extension:

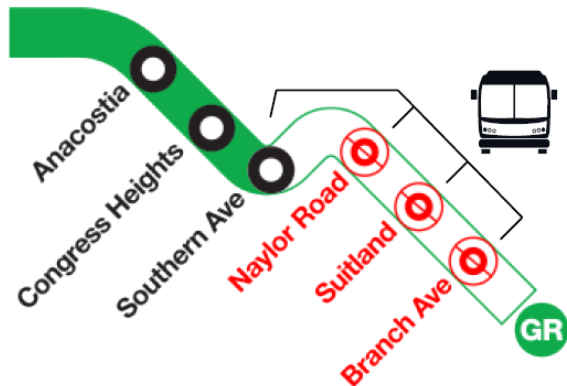
August 9-10 & August 16-17

Congress Heights Station will be closed, and shuttle service will extend to Anacostia.

Free parking at Branch Ave, Suitland and Naylor Road.

Planned Work

- Installation of 102,000 linear feet of fiber optic and radio cable.
- Upgrade signaling and communication systems.
- Rail renewal, fastener and tie replacement, ballast tamping, and grout pads of the rail infrastructure.
- Installation of upgraded platform edge lights.
- Re-lamping and repairing lighting - roadway and non-roadway, and the ETS circuits.
- Replacement of feeder cables in tie-breaker rooms.
- Station signage updates and station repairs – both interior and exterior.



Aug. 2-31



Aug. 9-10 & Aug. 16-17

For more information check out, wmata.com/phase2.