

Annual Public Safety Initiatives Update

Safety & Operations Committee



Your Metro, the Way Forward

Annual Public Safety Initiatives Update

Focus today



Service excellence

Deliver safe, reliable, convenient, equitable, accessible, and enjoyable service for customers.



Talented teams

Attract, develop, and retain top talent where individuals feel valued, supported, and proud of their contribution.



Regional opportunity & partnership

Design transit service to move more people and equitably connect a growing region.



Sustainability

Manage resources responsibly to achieve a sustainable operating, capital, and environmental model.

Objective of Service Excellence Goal

Safety and Security | Safety Initiatives

Compassion | Crisis Intervention/Community Outreach

Problem-Oriented Policing | High Visibility, Police Partnerships, and Enforcement

MTPD Crime Reduction Strategy

Annual Public Safety Initiatives Update

Strategic Objective

- Problem-oriented policing (Root cause policing)

Transformation Projects

- Regional partnerships and increased Special Police Officers (SPOs)
- Point-of-Entry policing
- Bus fare enforcement on bus routes
- Crisis Intervention Team & enhanced community outreach
- Truancy enforcement
- Balanced and Restorative Justice
- Training Academy

Key Performance Indicators

- Crime rate reductions
 - Citations
 - Assaults
- Closure rates
- SPO's train car checks
- Body worn cameras
- Crisis intervention outcomes
- Outreach engagement

Compassion: Crisis Intervention

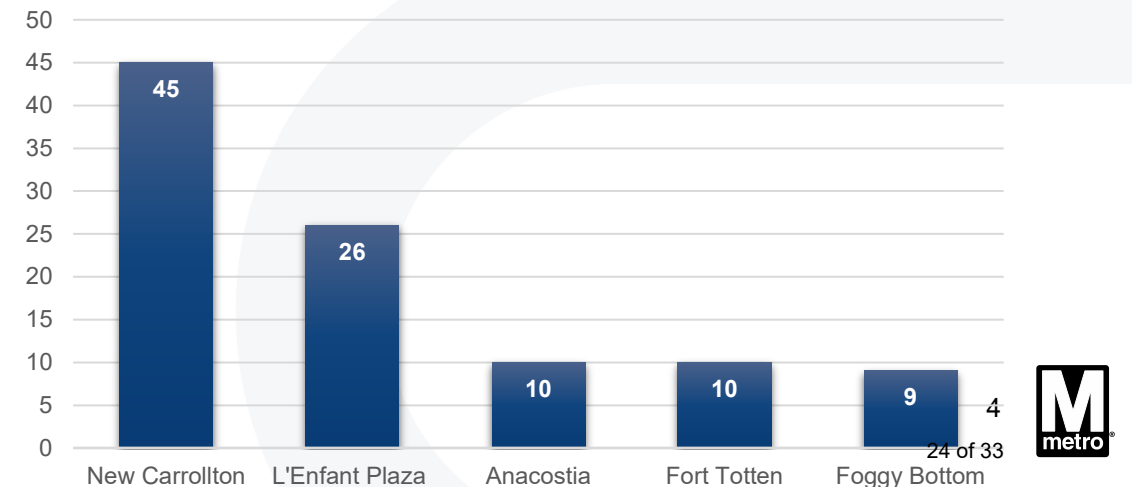
Annual Public Safety Initiatives Update

Calendar Year 2024 Metrics

- Connected with 23,000+ customers
 - Provided resources to over 1,970 customers experiencing crisis
- Boarded over 15,400 trains
- Boarded 2,400+ buses
- Walked 5,000+ platforms



Mental Health Consumers Engaged at
Top Five Metro Rail Locations
(2024)



Compassion: Community Outreach

■ Youth Programs

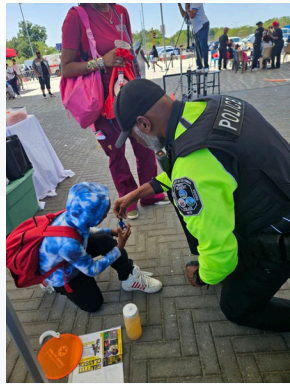
- Youth Advisory Council
- Safe Passage
- Balanced and Restorative Justice program

■ Engagement & Outreach

■ Cadet Program

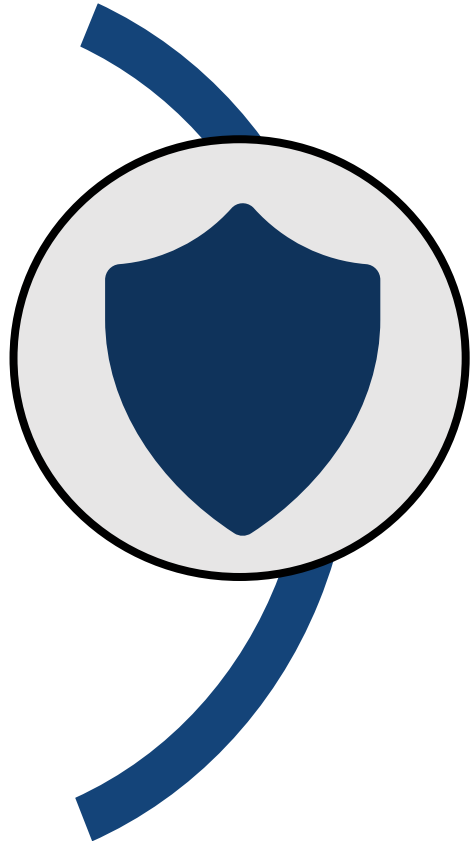
■ MTPD Criminal Justice Training Academy

Annual Public Safety Initiatives Update



25 of 33

Problem-Oriented Policing: High Visibility and Partnerships



- High visibility deployment in five parking garages
 - Branch Avenue, Downtown Largo, New Carrollton, Southern Ave, and Suitland
- Local police departments supplement staffing
 - Alexandria, Cheverly, Greenbelt, Hyattsville, Metropolitan Police Department and Metropolitan Washington Airports Authority
- Allied Special Police Officers deployed between February – December 2024
 - 26 rail stations
 - patrolled over 287,200 trains

Annual Public Safety Initiatives Update

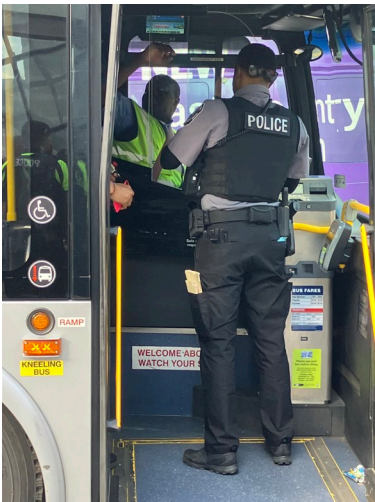


Problem-Oriented Policing: Enforcement

Bus Fare Enforcement

High-visibility details during AM/PM rush hours

- Plain clothes officers conducted fare enforcement
- Issued citations or made arrests for:
 - Outstanding warrants
 - Weapons
 - Narcotics

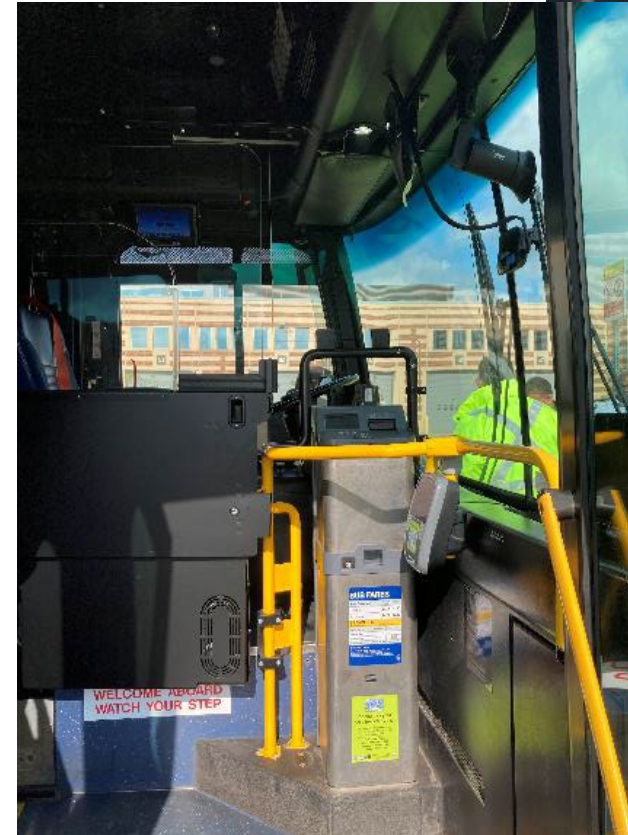


Bus Enforcement Stats (December 2-15, 2024)	
Buses Checked	2422
Evasion Citations	758
Evasion Arrests/Failure to Cooperate	36
Warrants/Fugitive Arrests	14
Evasions Deterred	1610
Weapons Seized	2 Firearms 1 BB gun

Bus Operator Barriers

- Testing designs from two manufacturers
 - Extended glass barriers
 - Fully-enclosed barrier
 - Opportunity for operator feedback to design and training of maintenance staff
 - Incorporating lessons learned from other transit agencies
- Additional buses with barriers to enter service February 2025
- 5-year bus procurement to include fully-enclosed barriers
- Will retrofit into full bus fleet

Future Design



Current Design

Problem-Oriented Policing: Enforcement

Annual Public Safety Initiatives Update

All Enforcement (Department-wide)			
Enforcement Type	2023	2024	% Change
Arrests	4,103	4,772	16%
Summonses/Citations	6,730	15,830	135%
Warnings	300	148	-51%
Warning - Panhandling	2	1	-50%
Warning - Loitering	1	1	N/C
Warning – Fare Evasion	286	141	-51%
Warning - Alcohol Violation	1	1	N/C
Warning – Smoke or Carry Lighter, Pipe, etc.	9	2	-78%
Warning – Disorderly Affray	0	1	100%
Warning – Other Offense	0	1	100%
Warning – Urinating in Public	1	0	-100%
Total	11,133	20,750	86%

- **Department-wide enforcement up 86% CY 2024** compared CY 2023
- **Rail fare enforcement increased 94% CY 2024** compared to CY 2023
- **372 truant youths** returned to school

Problem-Oriented Policing: Enforcement

Annual Public Safety Initiatives Update

CY2024 Top Crimes Reported

Part I Crimes	Part II Crimes
Theft Auto (-60%)	Simple Assault (+5%)
Aggravated Assault (-24%)	Destruction of Property (-33%)
Robbery Force (-21%)	Indecent Exposure (-2%)

- **Part I crime down 32% overall during CY2024**
 - 39% reduction in FY24 Q4 as compared to FY23 Q4
 - 38% reduction for crimes per million in FY24 as compared to FY23
- **Part II crime down 14% CY2024**

Top Part I and Part II crimes by location

- **Auto Theft:** Greenbelt, College Park, Branch Avenue, Downtown Largo
- **Aggravated Assault:** Shift from rail to bus (B2, X2, 70 and 92 Routes)
- **Robbery:** Fort Totten, Southern Avenue, L'Enfant Plaza, and Gallery Place

Problem-Oriented Policing: Enforcement

Annual Public Safety Initiatives Update

CY2024 Employee Assaults

Top Bus Routes	Top Rail Stations
B2	Anacostia
X2	Gallery Place
70	L'Enfant Plaza
52	Waterfront
90	New Carrollton
92	Archives

Crime types most often experienced by employees:

- Aggravated assault
- Fondling
- Armed robbery
- Simple assault

Actions to Reduce Employee Assaults

- **Point-of-Entry Policing**
- **Fare enforcement** conducted by police not operators
- **MTPD trains** operators on stress management, de-escalation techniques
 - Bus operators stay behind the shield
 - Station managers stay in kiosk

WMATA Proposed Banning

- No current banning program
- Currently only courts can issue bans on the Metro system
 - Short duration only (e.g., 30 days)
 - Limited to station or bus line where offense occurs
- Best practice and recommendation
 - Implement a banning process for WMATA
 - Create a policy based on best practices, and Counsel oversight, that includes an appeal process
 - Run public education campaign
 - Ban repeat and egregious offenders:
 - Sex offenses
 - Employee assaults



Problem-Oriented Policing: Closure Rates

Annual Public Safety Initiatives Update



- MTPD has higher closure rates than national average
- Part I crime is down 31% CY2024
- Part II crime is down 18% CY2024

	National Rate (2023)	MTPD Rate (2024)
Assault Offenses	42%	67%
Homicide Offenses	51%	N/A
Kidnapping/Abduction	56%	100%
Sex Offenses	21%	55%
Destruction/Damage/Vandalism	15%	20%
Larceny/Theft Offenses	15%	31%
Motor Vehicle Theft	8%	17%
Robbery	27%	63%

- Assault Offenses includes aggravated assault and simple assault
- No Homicides occurred in 2024
- Sex Offenses include rape, sodomy, and fondling