

# *Population & Job Growth Patterns in the Washington Region*

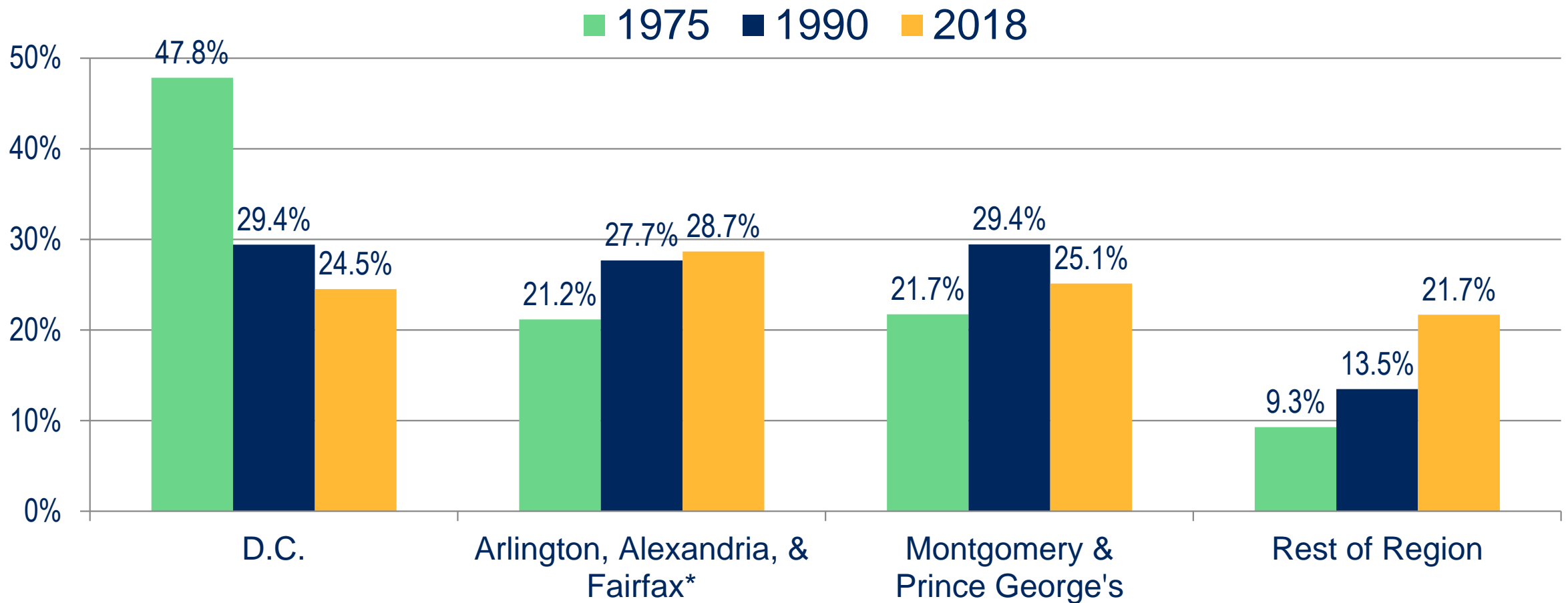
Jeannette Chapman  
Director

Stephen S. Fuller Institute  
Schar School of Policy and Government  
George Mason University



**February 13, 2020**

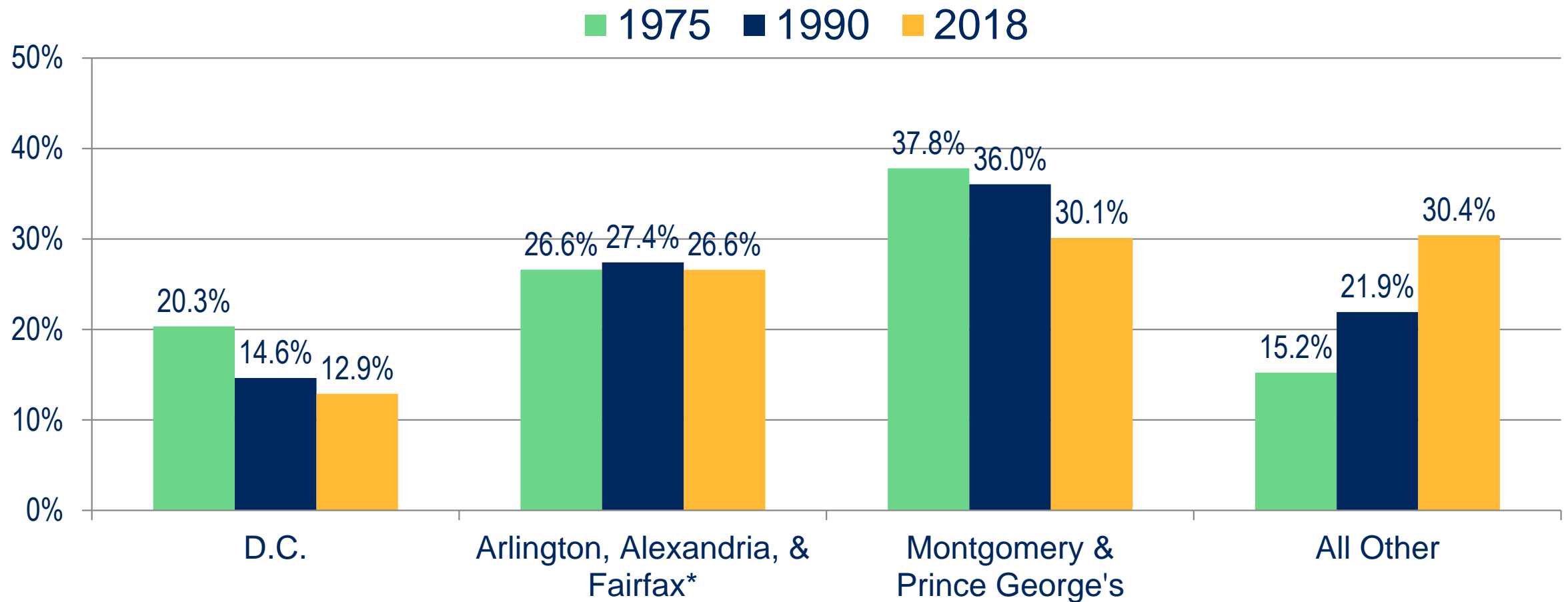
# Distribution of Jobs in the Washington Region: 1975, 1990 & 2018



Sources: U.S. Bureau of Labor Statistics; The Stephen S. Fuller Institute at the Schar School, GMU

\*Includes Falls Church City and Fairfax City

# Distribution of Residents 25-54 Years Old in the Washington Region: 1975, 1990 & 2018

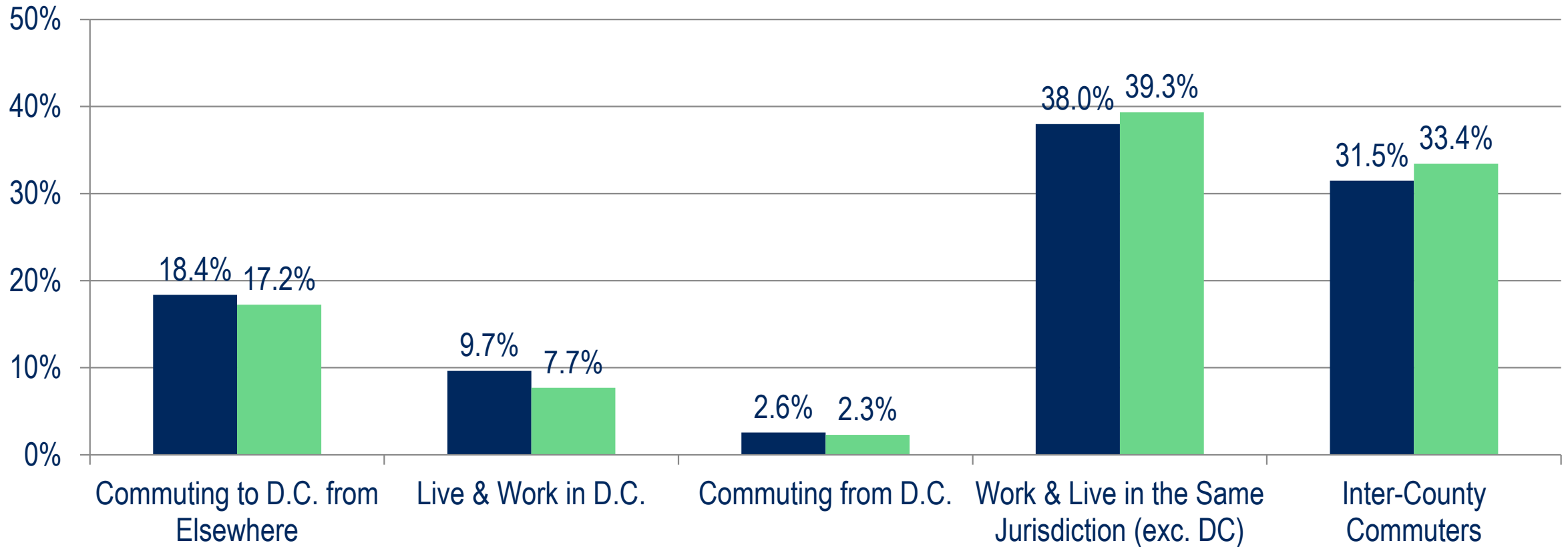


Sources: U.S. Census Bureau; The Stephen S. Fuller Institute at the Schar School, GMU

\*Includes Falls Church City and Fairfax City

# Distribution of Commuters in the Washington Region, 1990 & 2015\*

■ 1990 ■ 2011-2015 (Avg)

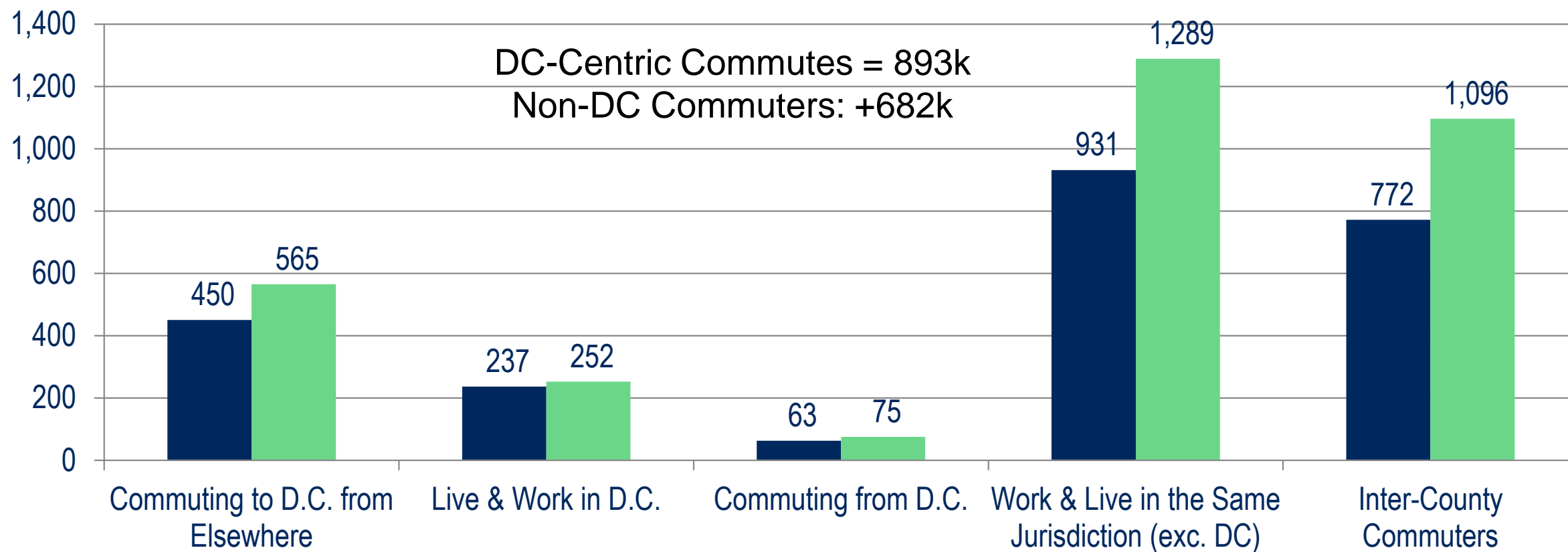


Sources: U.S. Census Bureau; The Stephen S. Fuller Institute at the Schar School, GMU

\*2011-2015 Average NOTE: Workers that work from home are shown as living & working in the same jurisdiction

# Commuters in the Washington Region 1990 & 2015\* (000s)

■ 1990 ■ 2011-2015 (Avg)



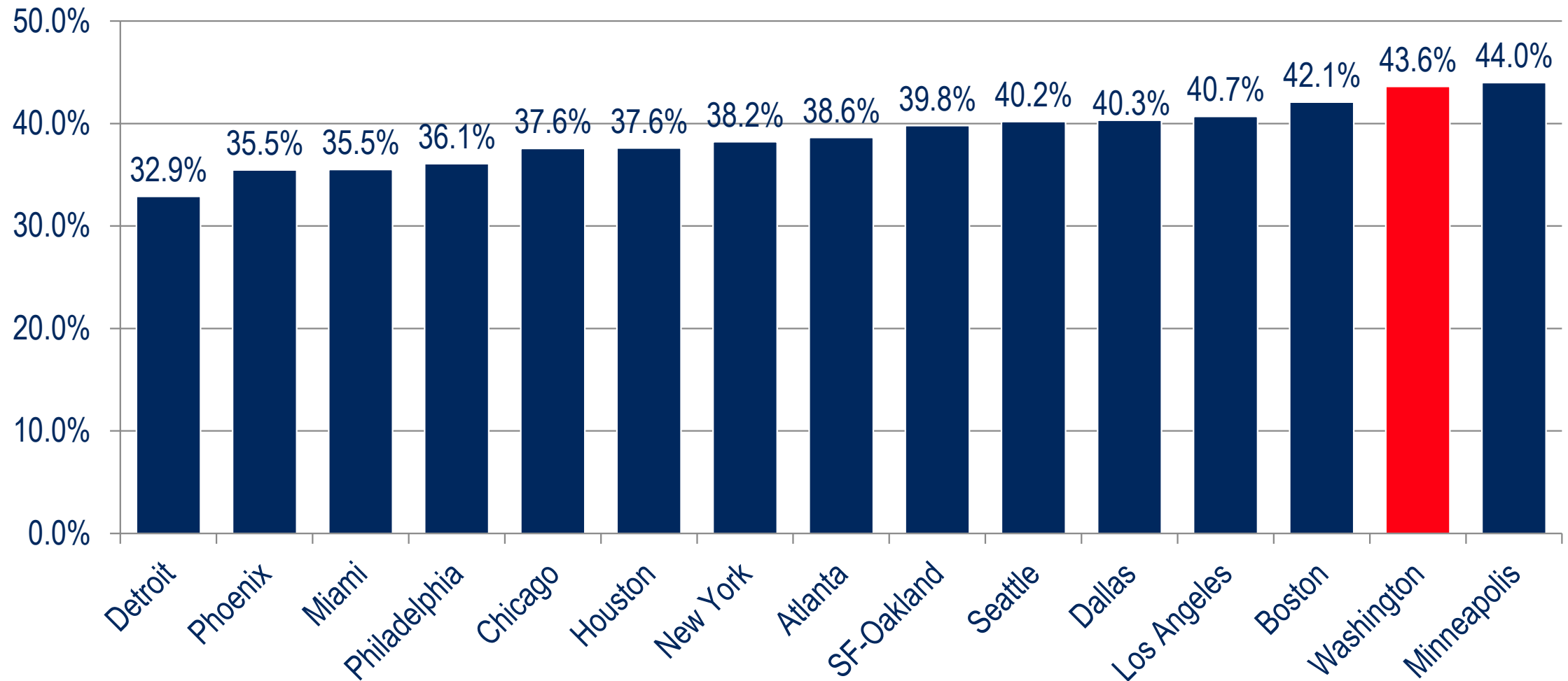
Sources: U.S. Census Bureau; The Stephen S. Fuller Institute at the Schar School, GMU

\*2011-2015 Average NOTE: Workers that work from home are shown as living & working in the same jurisdiction



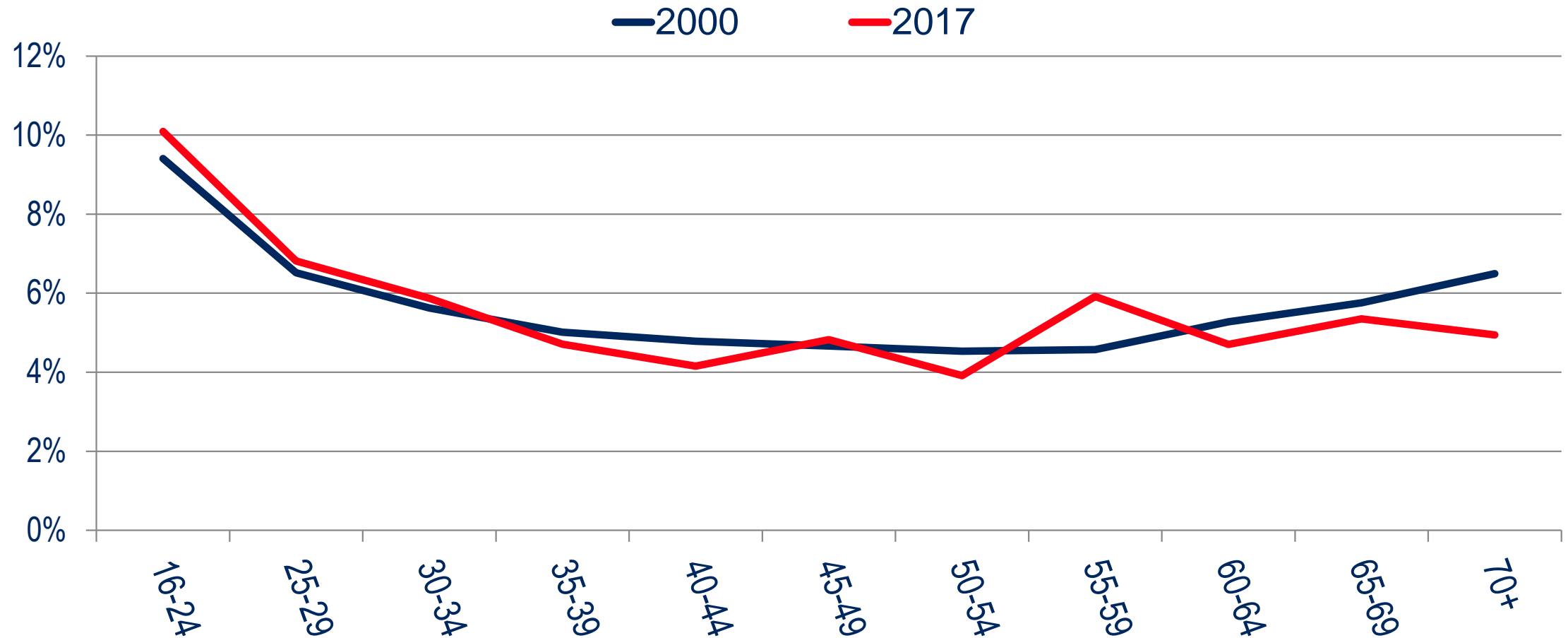
The  
**STEPHEN S. FULLER INSTITUTE**  
for Research on the Washington Region's Economic Future

# Share of 2+ Worker Households, 2017



Sources: U.S. American Community Survey; The Stephen S. Fuller Institute at the Schar School, GMU

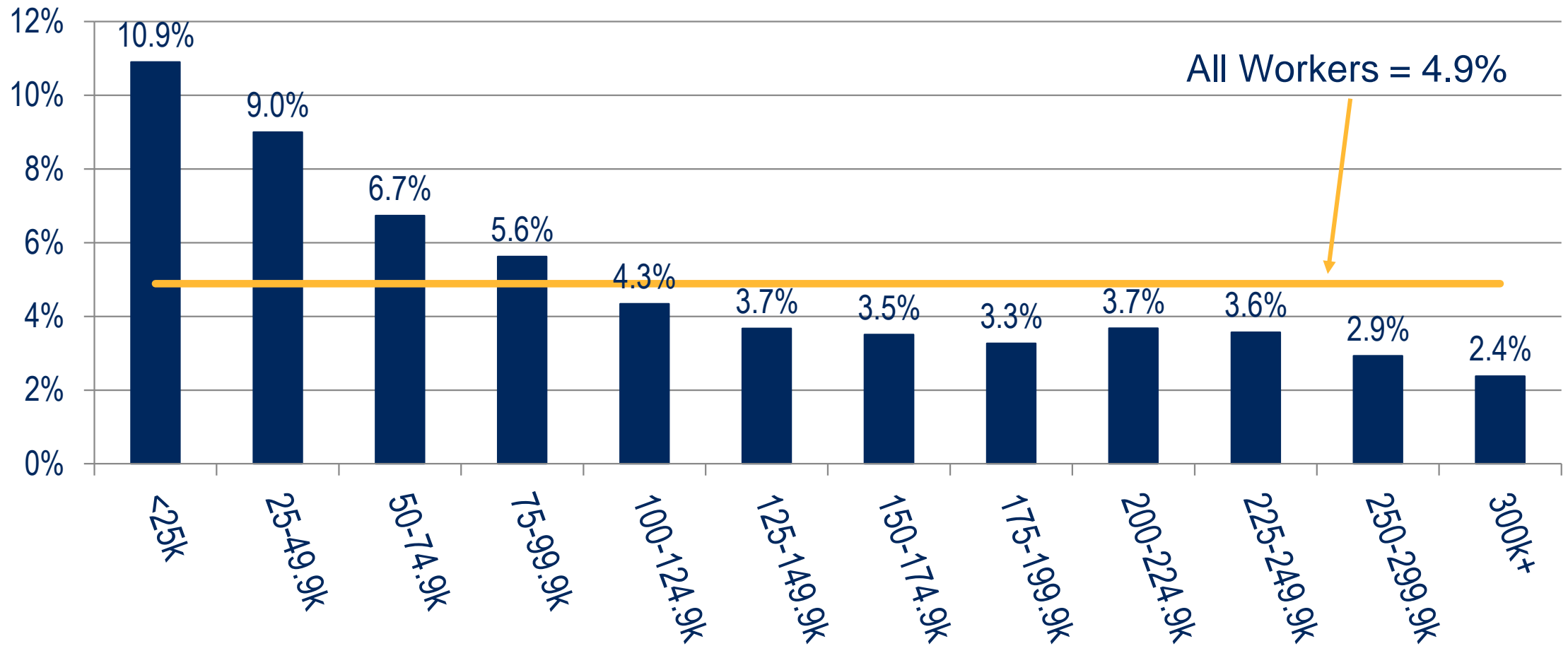
# Share of Workers Typically Taking a Bus to a Job Inside the Beltway\*



Sources: U.S. Census; The Stephen S. Fuller Institute at the Schar School, GMU

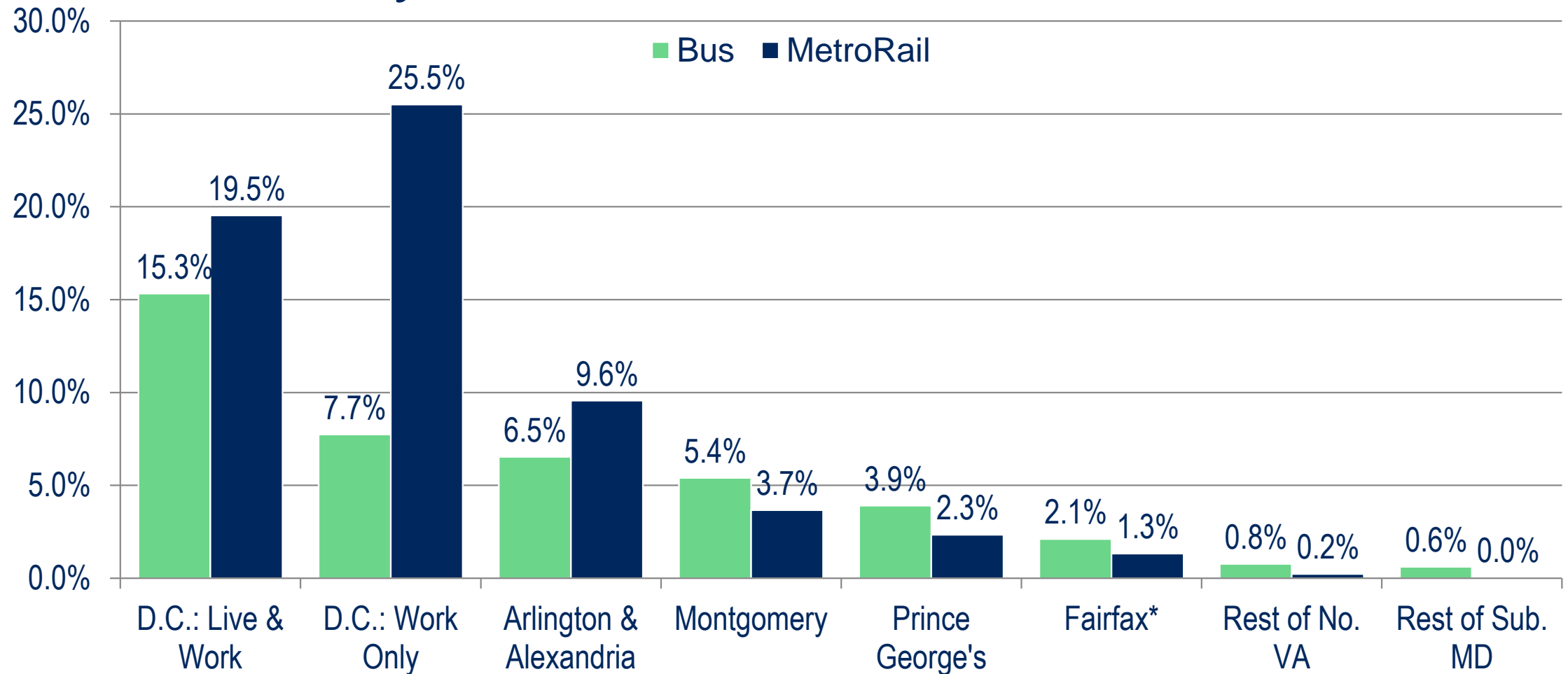
\*Includes Montgomery, Prince George's, D.C., Arlington, Fairfax & the cities of Alexandria, Fairfax, & Falls Church

# % of Workers Taking Bus to a Job in the Washington Region by Household Income, 2015-2017





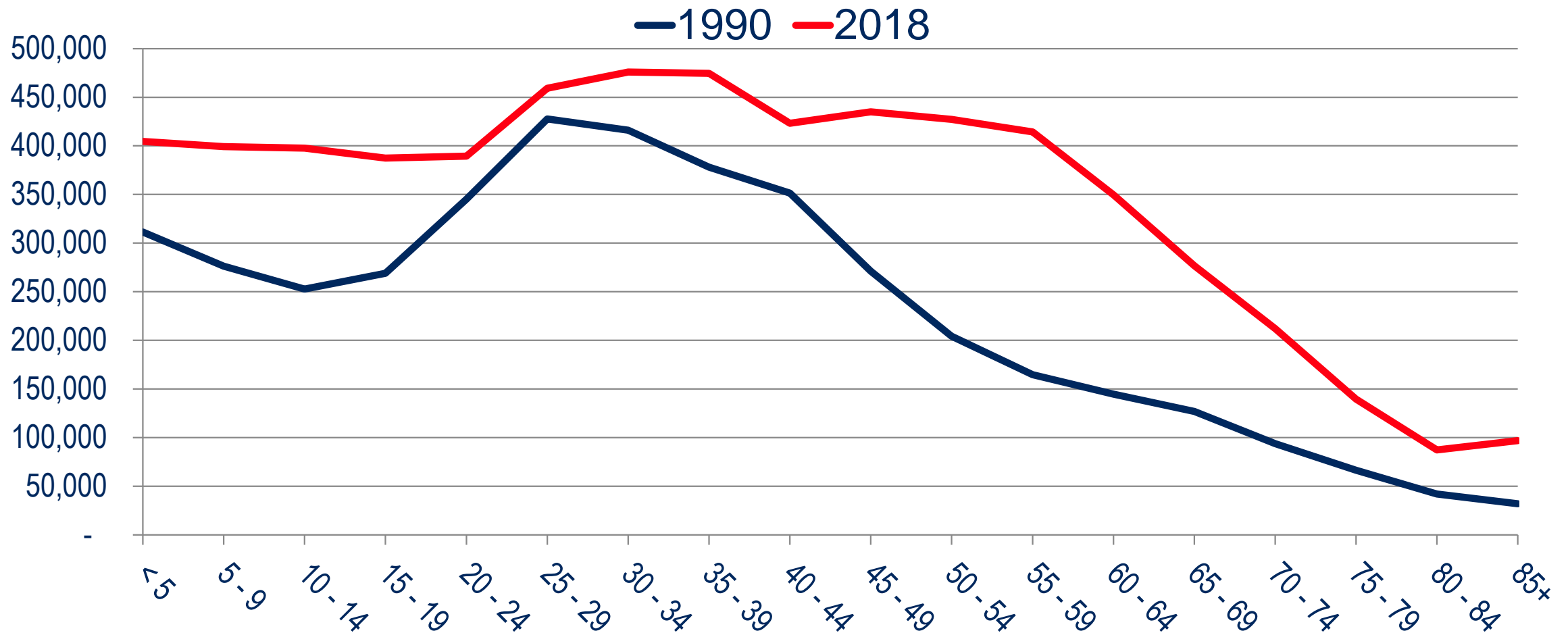
# Share of Workers Commuting By Transit By Place of Work, 2015-2017



Sources: U.S. American Community Survey (2015-2017 microdata); The Stephen S. Fuller Institute at the Schar School, GMU

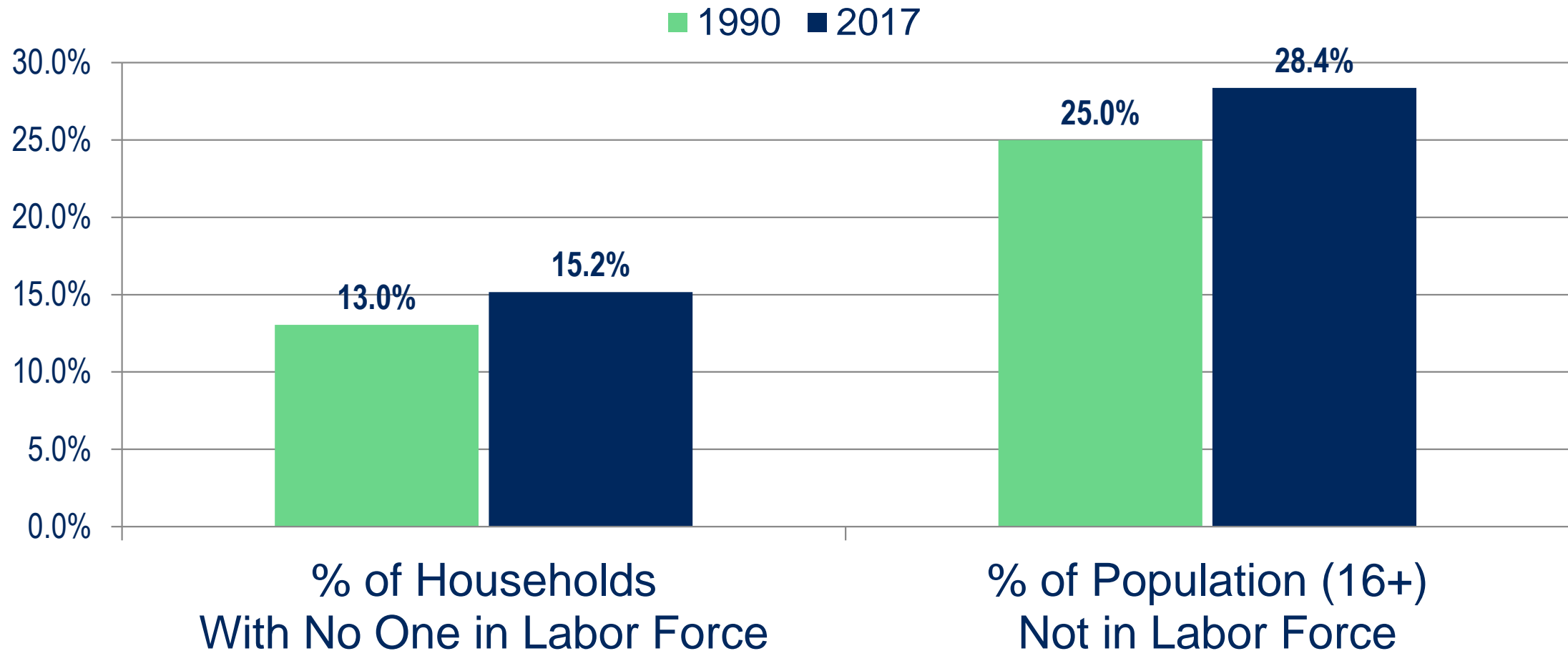
\*Includes the cities of Fairfax, & Falls Church

# Population by Age, Washington Region



Sources: U.S. Census Bureau (1970-00 Intercensal Estimates & v2018 Population Estimates); The Stephen S. Fuller Institute at the Schar School, GMU

# Labor Force Participation, Washington Region



Sources: U.S. Census Bureau (1990 Decennial microdata & 2017 ACS microdata); The Stephen S. Fuller Institute at the Schar School, GMU

# Questions?

For monthly reports on the  
Washington region's economic performance go to  
**[sfullerinstitute.gmu.edu](http://sfullerinstitute.gmu.edu)**  
 @FullerInstitute



Schar School of Policy  
and Government



The  
**STEPHEN S. FULLER INSTITUTE**  
for Research on the Washington Region's Economic Future