

Washington Metrorail Safety Commission

September 27, 2018

State Safety Oversight

- Purpose
- MAP-21
- Enabling legislation
- Funding
- Requirements
- Certification
- Relationship between WMSC and WMATA
- Deadlines

SSO Core Functions

- Investigations
- Inspections
- Audits
- Corrective Action Plans (CAPs)
- Safety Certification
- Emergency Management

The TOC

- Current status
- Future of the TOC after WMSC's program is certified

The WMSC

- Commissioners
- Organizational Structure
- Authority & Enforcement
- Transition & Certification

WMSC Commissioners

District of Columbia

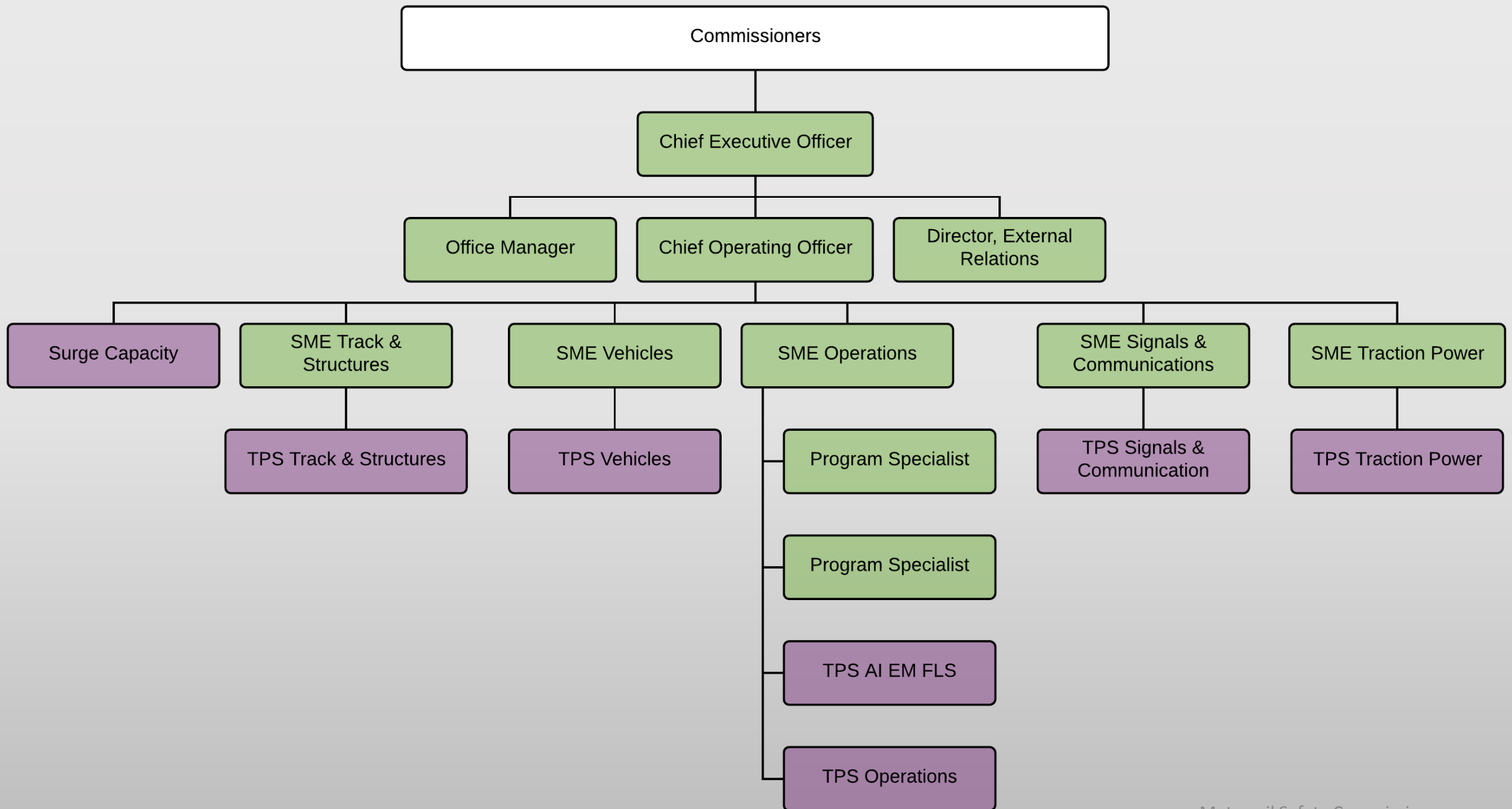
- Robert Bobb
- Christopher Hart (Chair)
- Chris Geldart (Alternate)

Virginia

- Greg Hull
- Mark Rosenker (Vice Chair)
- Barbara Reese (Alternate)

Maryland

- Debra Farrar-Dyke (Secretary/Treasurer)
- Howard Roberts
- John Contestabile (Alternate)



Oversight Authority

- Inspections, investigations, examinations and testing
- Review, approve, oversee and enforce the safety plan of the WMATA Rail System
- Corrective Action Plans (CAPs)
- Implement and enforce relevant federal and state laws
- Triennial audits
- Emergency management/emergency preparedness
- Major capital project safety certification

Enforcement Powers

- Direct WMATA's IG to conduct safety-related audits or investigations
- Direct WMATA to prioritize spending on safety critical items
- Require, review, approve, oversee, and enforce CAPs
- Direct WMATA to suspend or disqualify an individual from performing in a safety sensitive position
- Remove a vehicle, infrastructure element or hazard
- Restrict, suspend, or prohibit rail service on all or part of the system
- Other actions the Commission deems and appropriate
- Annual Safety Report

Transition

- FTA personnel will transfer knowledge about FTA responsibilities:
 - Inspections
 - Investigations
 - CAPs
- FTA personnel will transfer knowledge about TOC responsibilities:
 - Emergency Management
 - Safety and Security Certifications
 - Triennial Audits

Current Status and Next Steps

- Application submitted
- FTA will determine completeness and then send an acknowledgement letter
- Transition kickoff
- Technical sessions (knowledge transfer)
- Shadowing:
 - Part One: WMSC will follow FTA
 - Part Two: FTA will follow WMSC

