

**Metro Matters Yards
Annual Board Update
Executive Summary**

Background

In July of 2005, the Board of Directors approved the award of two contracts for the modifications to the Brentwood, Greenbelt and Shady Grove Rail Yards to increase their operational and storage capacity. Notice to Proceed was given for the two contracts in August 2005.

Purpose

To provide the Board of Directors with the initial annual update on the status of the Metro Matters Yards design/build contracts.

Status

The two contracts for the three yard renovations are on schedule and within budget. There have not been problems encountered thus far and staff is diligently working with the contractors to ensure that as issues arise they are dealt with in an expedited manner.

Recommendation

None since there is no Board action required.

Next Steps

WMATA Staff must maintain effective management of the contracts to ensure continued successful prosecution of the work.



Washington Metropolitan Area Transit Authority

Annual Update on Metro Matters Yards



Presented to the Board of Directors:

Planning and Development Committee

by

The Office of Construction

June 1, 2006



Purpose & Background

- To provide an update for the Planning and Development Committee on the status of the Metro Matters Yards Project
- In July of 2005 the Board approved awarding 2 contracts for the implementation of the revisions to the yards:
 - Shady Grove and Greenbelt Yard Improvements to the firm of Hensel Phelps in the amount of \$98,321,000
 - Brentwood Yard Improvements to the firm of Clark Design-Build in the amount of \$43,100,000
- Notice-to-Proceed was issued in August 2005
- All Yard work will be completed by the Spring of 2008

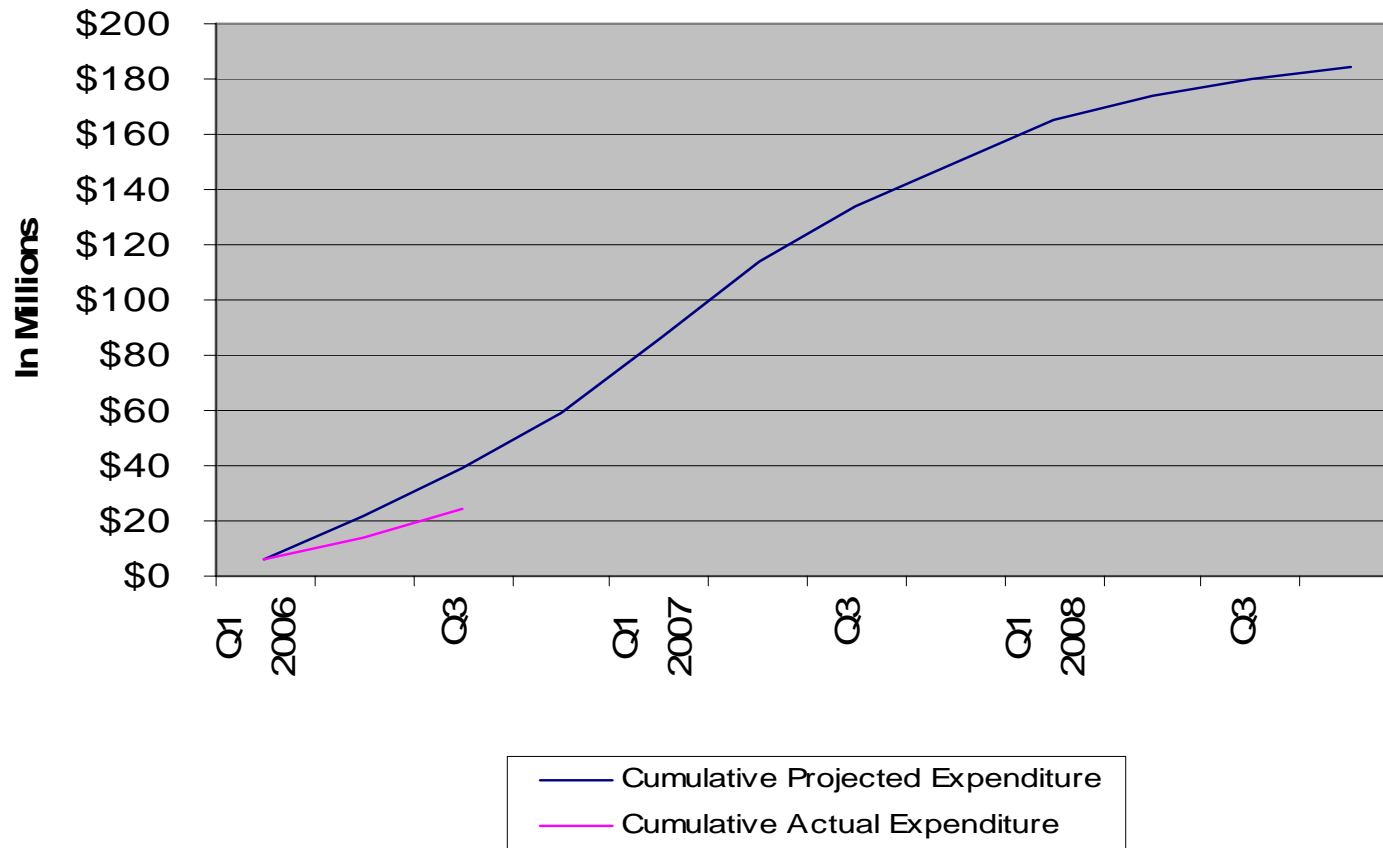


Metro Matters Rail Program

Rail Yard & Shop Expansion

- **Budget – Funding Profile**

BUDGET- EXPENDITURE PROFILE





Metro Matters Rail Program

Rail Yard & Shop Expansion

Overall Maintenance Facility Capacity Increases

	Existing Capacity	Metro Matters Expansion	Capacity Increase (Decrease)
Maintenance Bays:			
Brentwood	28	12	40%
Greenbelt	22	-	-
Shady Grove	20	16	80%
Truck Lifts:			
Brentwood	4	(2)	(50%)
Greenbelt	4	8	200%
Shady Grove	1	-	-
Shop Floor Space:			
Brentwood	230,000 sq. ft.	-	-
Greenbelt	130,000 sq. ft.	72,000 sq. ft.	55%
Shady Grove	76,000 sq. ft.	52,000 sq. ft.	68%

This program expands railcar yard storage capacity by 220 with the addition of Branch Avenue Yard and the Largo tail tracks. These changes increase overall yard storage capacity to 1304 rail cars with room for an additional 126 rail cars in the shops. The fleet size after delivery of all 6000 series cars will be 1136. After the excess capacity of 296 cars is used, approximately 800 feet of new track will have to be added for every new 8 car train purchased.



Metro Matters Rail Program

Rail Yard & Shop Expansion

Challenges for the Calendar Year 2006

- Brentwood Yard
 - Coordinating the relocation of functions to the Greenbelt annex with minimal interruption to the operation of the shop
- Greenbelt Yard
 - Completing the annex by 10/11/06 to allow for an on schedule relocation of the Brentwood Yard operations
 - Obtaining State Certification of passenger and freight elevators
 - Completing all necessary testing and certifications to Commission and Safety Certify the new annex
- Shady Grove
 - Addressing the Department of Operation's proposed revisions to the program including removal of a mound of dirt from the north part of the yard to allow other uses in the area and adding more storage tracks



APPENDIX

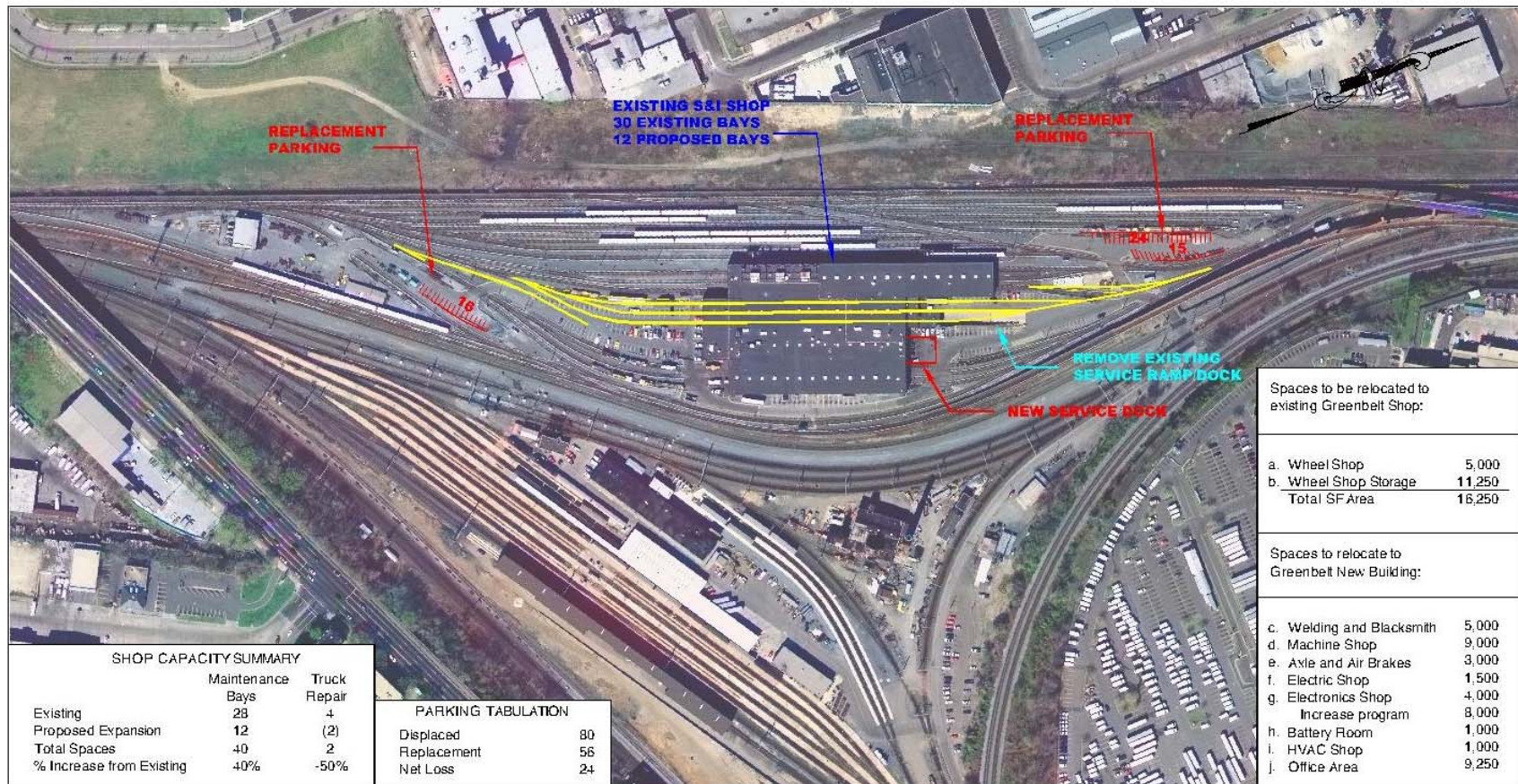
Progress Photos



Metro Matters Rail Program

Rail Yard & Shop Expansion

Brentwood Yard





Metro Matters Rail Program

Rail Yard & Shop Expansion

Brentwood Yard



Former basement parts storage area being prepared for enhancements to support three new tracks on the shop floor above.



Metro Matters Rail Program

Rail Yard & Shop Expansion

Brentwood Yard



Basement floor slab enhancement to support new first floor carrying three new tracks into the building.



Metro Matters Rail Program

Rail Yard & Shop Expansion

Brentwood Yard



Construction of the new loading dock.



Metro Matters Rail Program

Rail Yard & Shop Expansion

Brentwood Yard



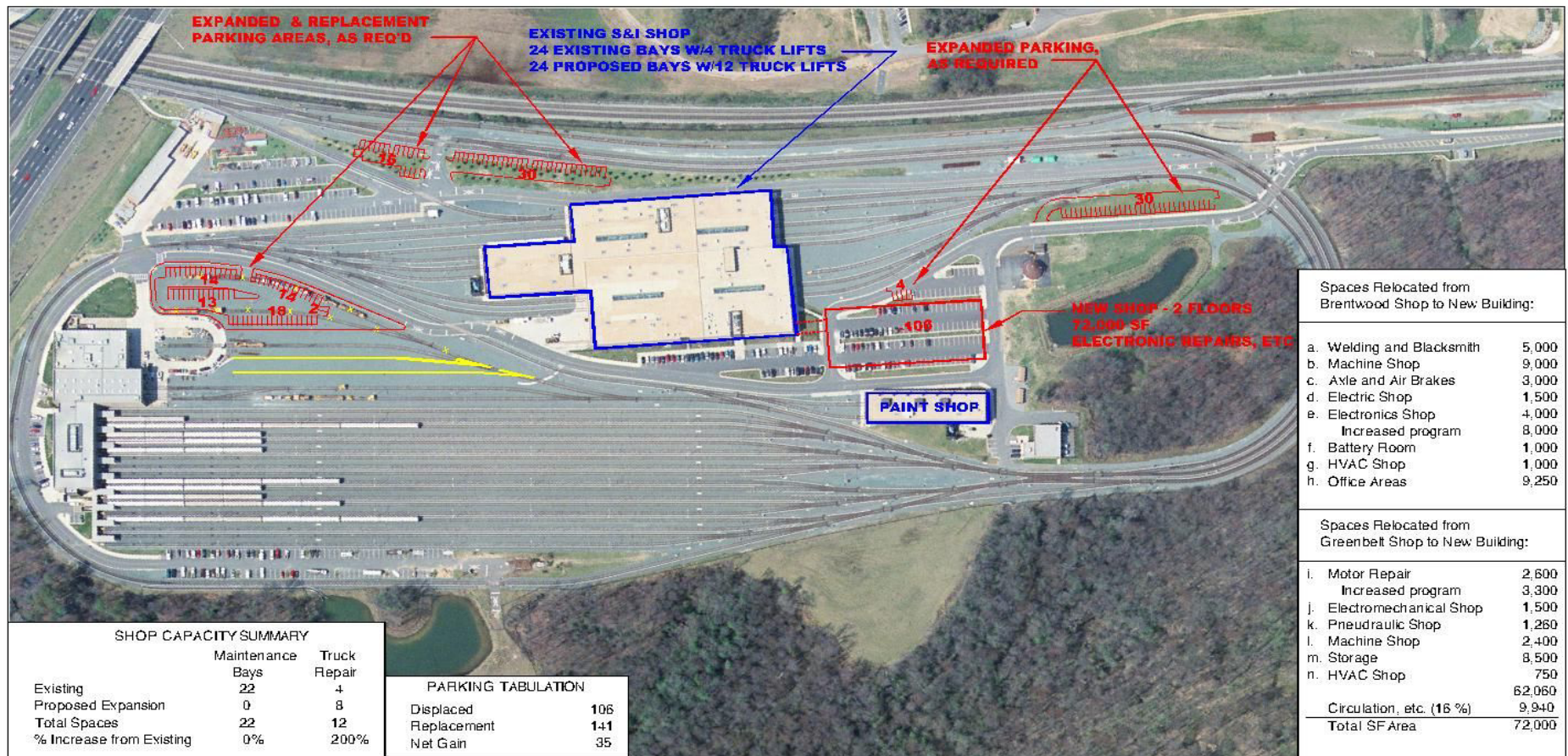
New loading dock adjacent to the ramp to the existing loading dock.



Metro Matters Rail Program

Rail Yard & Shop Expansion

Greenbelt Yard



Spaces Relocated from Brentwood Shop to New Building:	
a. Welding and Blacksmith	5,000
b. Machine Shop	9,000
c. Axle and Air Brakes	3,000
d. Electric Shop	1,500
e. Electronics Shop	4,000
Increased program	8,000
f. Battery Room	1,000
g. HVAC Shop	1,000
h. Office Areas	9,250

Spaces Relocated from Greenbelt Shop to New Building:	
i. Motor Repair	2,600
Increased program	3,300
j. Electromechanical Shop	1,500
k. Pneudraulic Shop	1,260
l. Machine Shop	2,400
m. Storage	8,500
n. HVAC Shop	750
	62,060
Circulation, etc. (16 %)	9,940
Total SF Area	72,000

SHOP CAPACITY SUMMARY		
	Maintenance Bays	Truck Repair
Existing	22	4
Proposed Expansion	0	8
Total Spaces	22	12
% Increase from Existing	0%	200%

PARKING TABULATION	
Displaced	106
Replacement	141
Net Gain	35



Metro Matters Rail Program

Rail Yard & Shop Expansion

Greenbelt Yard



Construction of the foundation of the annex and installation of utilities.



Metro Matters Rail Program

Rail Yard & Shop Expansion

Greenbelt Yard



Erection of the structural steel frame for the annex commences. Foundation and utility work continues.



Metro Matters Rail Program

Rail Yard & Shop Expansion

Greenbelt Yard



Structural steel frame over 90% complete. Metal floor deck, roof joists, rebar, mechanical, electrical and plumbing installations continue for 2nd floor of the annex.



Metro Matters Rail Program

Rail Yard & Shop Expansion

Greenbelt Yard



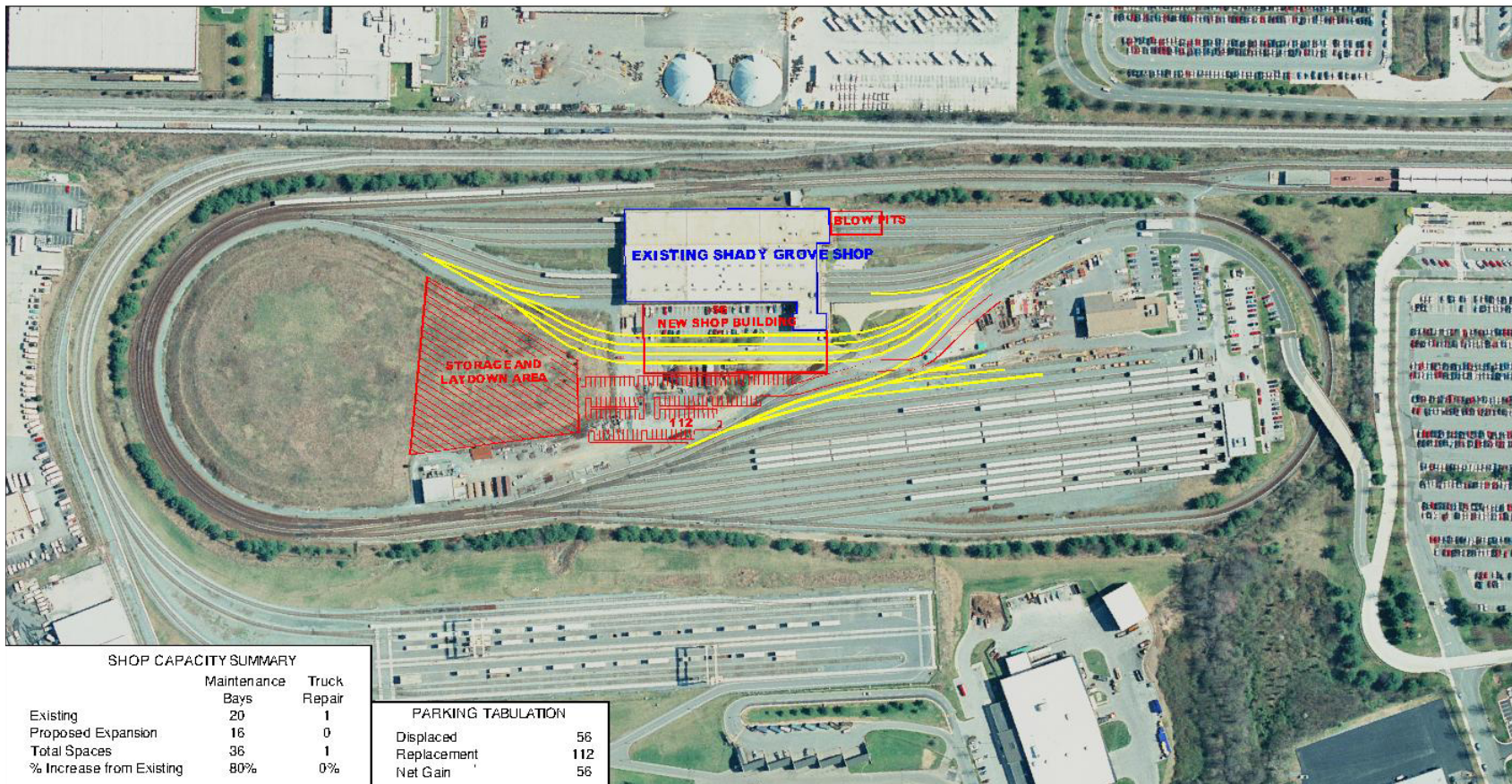
Pre-cast concrete installation for the annex.



Metro Matters Rail Program

Rail Yard & Shop Expansion

Shady Grove Yard





Metro Matters Rail Program

Rail Yard & Shop Expansion

Shady Grove Yard



Installation of 96 inch diameter underground storm water retention piping system for collection of surface run-off.



Metro Matters Rail Program

Rail Yard & Shop Expansion

Shady Grove Yard



Placement of fill material around 96 inch diameter storm water retention piping that will collect and retain approximately 4700 cf or nearly 42,000 gallons of water run-off.



Metro Matters Rail Program

Rail Yard & Shop Expansion

Shady Grove Yard



Steel beams supporting an existing duct bank in preparation for the installation of a new 78 " diameter drainage pipe that will run below it.



Metro Matters Rail Program

Rail Yard & Shop Expansion

Shady Grove Yard



Placement of fill over the 78" storm water pipe.