



Customer Service and Operations Committee

Information Item III-C

January 10, 2013

Rail Service Adjustments for State of Good Repair

**Washington Metropolitan Area Transit Authority
Board Action/Information Summary**

<input type="checkbox"/> Action <input checked="" type="checkbox"/> Information	MEAD Number: 103186	Resolution: <input type="checkbox"/> Yes <input checked="" type="checkbox"/> No
---------------------------------------------------------------------------------	------------------------	------------------------------------------------------------------------------------

TITLE Rail Service Adjustments for State of Good Repair

PRESENTATION SUMMARY

To rebuild the system to a steady state of good repair, Metro continues the aggressive work program it launched in 2011. The outstanding amount of infrastructure and system work cannot be achieved without scheduled service interruptions that span from single tracking on days, nights and weekends to total weekend shutdowns.

PURPOSE

To update the Board on the upcoming 2013 service adjustments required to support achieving a state of good repair.

DESCRIPTION

Key Highlights:

Metro has undertaken an aggressive rebuilding program that expends capital funds to ensure a safer system and provide:

- Improved service reliability
- Rehabilitated track system infrastructure
- Smoother ride quality
- Continued completion of National Transportation Safety Board (NTSB) recommendations

BACKGROUND AND HISTORY

In 2011, Metro moved forward to rebuild the region's transit system investing \$5 billion over the next six years to produce a better service for customers, made possible through funding support from the District of Columbia, Maryland, Virginia and the Federal government.

The \$5 billion investment covers over a 100 projects including:

- New generation of rail cars to replace the oldest cars
- Replacement of 60 miles of rail over the next six years

This major investment is already showing results in the form of improved reliability on Metrorail and improved safety. Last May Metro completed the installation of the Guarded No. 8 switches throughout the system, one of the NTSB recommendations.

DISCUSSION

The Fiscal 2013 Capital Budget continues to accelerate efforts to rebuild Metro, with nearly a billion dollars (\$997M) in investment. Over the next three months Metro has scheduled 43 single tracking/11 shutdowns to accomplish:

- Rehabilitation of station platforms
- Rehabilitation of 3rd rail
- Repair/replacement of insulators, fasteners, ties and turnouts
- Operational testing for the Silver Line
- Installation of Neutral Host cable
- Replacement of track circuits
- Rail welding
- Replacement of track
- Replacement of #10 turnouts
- Repair of tunnel leaks
- Radio remediation
- Greenbelt test track

A chronological listing of upcoming single tracking outages and shutdowns is provided in the attached Appendix. Outages have been planned to complete the project work in the shortest time while minimizing customer impact. This is accomplished by multiple projects working in parallel during outages. Further review of required maintenance and infrastructure work is ongoing to assess the need for additional outages.

There are no planned shutdowns during:

- Martin Luther King/Presidential Inauguration
- Cherry Blossoms
- 4th of July
- Thanksgiving
- Christmas

Metro has conducted a proactive and aggressive customer outreach campaign to ensure that as part of the Metro Forward Campaign the public is aware of upcoming work and closures through:

- Electronic display screens at kiosk in every station
- Station banners, signs, murals, take ones
- Station announcements
- Social media messages, videos
- Web site postings
- Metro alerts/customers advisories

- Call Center (on-hold) recordings
- Added personnel on-site
- Community briefings, outreach
- Outreach to local Departments of Transportation
- News media advisories
- Newspapers, radio advertisements

ALTERNATIVES

None

FUNDING IMPACT

All projects are funded in the FY13 approved Capital budget.

MEAD AMOUNT

\$0

TIMELINE

Previous Actions	Provided the Board an update July 2012
Anticipated Actions After Presentation	The Board and public will continue to be informed regarding upcoming work through the Metro Forward Campaign and Customer Outreach.

RECOMMENDATION

No recommendation, information item only.

ELECTRONIC ATTACHMENTS

None



Washington Metropolitan Area Transit Authority

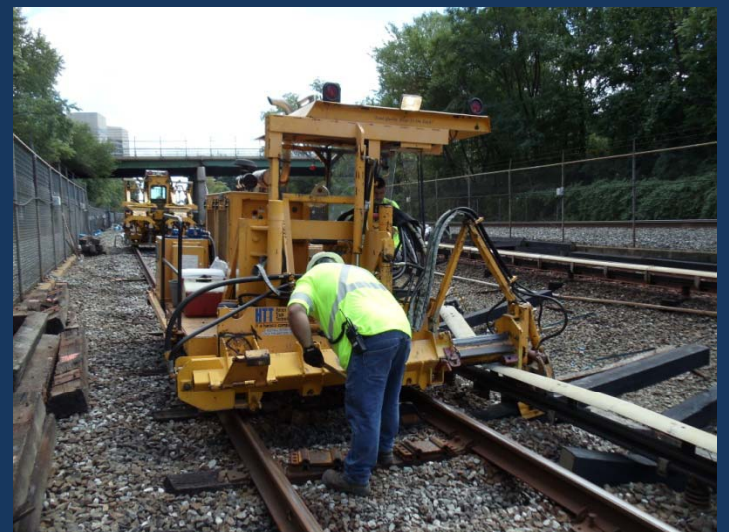
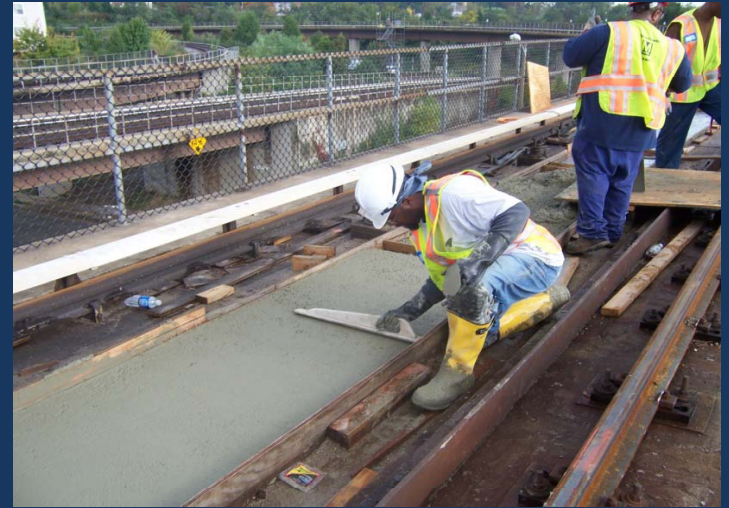
2013 Rail Service Adjustments for State of Good Repair

Customer Service and Operations Committee
January 10, 2013



1st Quarter Upcoming Single Tracking & Shutdowns

- 43 single tracking
 - Rehab of platforms, 3rd rail
 - ETS cable
 - Silver Line operational testing
 - Installation of Neutral Host cable (Cell Phone Carriers)
 - Track circuit replacement – NTSB recommendation
- 11 shutdowns - multiple projects in parallel
 - Rail welding
 - Replacement of track/#10 turnouts
 - Repair of tunnel leaks
 - Radio remediation
 - Greenbelt Test Track
 - Repair/replacement of insulators, fasteners, ties, turnouts





Upcoming Shutdown Notes

- No planned shutdowns during Martin Luther King/Presidential Inauguration weekend
- No planned shutdowns during Cherry Blossoms, 4th of July, Thanksgiving and Christmas
- Veterans Day and other holiday weekend shutdowns being evaluated





Customer Outreach Conducted

- As part of Metro Forward Campaign
 - Electronic display screens at kiosk in every station
 - In station banners, signs, murals, take ones
 - In station announcements
 - Social media messages, videos
 - Web site postings
 - Metro alerts/customer advisories
 - Call Center (on-hold) recordings
 - Added personnel on-site
 - Community briefings, outreach
 - Outreach to local Departments of Transportation
 - News media advisories
 - Newspaper, radio advertisements



APPENDIX



Single Tracking Operations

Start	Finish	Line	Type	Location
January 10, 2012	January 12, 2013	Red	3 rd Rail	Friendship Heights – Medical Center
January 10, 2013	January 17, 2013	Blue	Station Dome	Federal Center SW – Eastern Market
January 10, 2013	January 28, 2013	Green	Fence Installation	College Park - Greenbelt
January 10, 2013	January 12, 2013	Red	Platform Rehab	Rhode Island Ave - Takoma
January 11, 2013	January 14, 2013	Green	Fence Installation	College Park - Greenbelt
January 11, 2013	January 14, 2013	Red	ETS Cable	Rhode Island Ave – Fort Totten
January 11, 2013	January 14, 2013	Red	Fastener/Insulator Renewal	Van Ness – Friendship Heights

Outages scheduled as of January 2, 2013



Single Tracking Operations

Start	Finish	Line	Type	Location
January 22, 2013	January 24, 2013	Red	3 rd Rail	Friendship Heights – Medical Center
January 14, 2013	January 17, 2013	Red	Neutral Host	Farragut North – Judiciary Square
January 19, 2013	January 22, 2013	No Single Tracking Martin Luther King/Presidential Inauguration		
January 22, 2013	January 31, 2013	Blue	Turnouts	Stadium Armory – Morgan Blvd
January 25, 2013	January 28, 2013	Orange	DTP Operational Testing	East Falls Church – West Falls Church
January 25, 2013	January 28, 2013	Orange	Platform Rehab/ Fastener Renewal	Stadium Armory - Cheverly
January 25, 2013	January 28, 2013	Green	Fence Installation	College Park - Greenbelt

Outages scheduled as of January 2, 2013



Single Tracking Operations

Start	Finish	Line	Type	Location
January 28, 2013	February 07, 2013	Red	Platform Rehab	Rhode Island Ave - Takoma
January 28, 2013	February 02, 2013	Red	Fastener Renewal	Van Ness – Friendship Heights
February 1, 2013	February 4, 2013	Green	Test Track Project	College Park - Greenbelt
February 1, 2013	February 4, 2013	Red	Neutral Host	Farragut North – Judiciary Square
February 1, 2013	February 4, 2013	Orange	DTP Operational Testing	East Falls Church – West Falls Church
February 4, 2013	February 7, 2013	Orange	DTP Brake Testing	East Falls Church – West Falls Church
February 4, 2013	February 7, 2013	Red	Joint Elimination	Dupont Circle – Van Ness

Outages scheduled as of January 2, 2013



Single Tracking Operations

Start	Finish	Line	Type	Location
February 4, 2014	February 14, 2014	Blue	Turnout	Stadium Armory – Morgan Blvd
February 6, 2014	February 21 2014	Green / Yellow	Cameras and Ceiling Tile Installation	Mt. Vernon Square – L’Enfant Plaza
February 8, 2013	February 11, 2013	Orange	Joint Elimination/Rail & Fastener Renewal	Ballston - West Falls Church
February 8, 2013	February 11, 2013	Orange	Platform Rehab/ Fastener Renewal	Stadium Armory - Cheverly
February 8, 2013	February 11, 2013	Green	Test Track Project	College Park - Greenbelt
February 8, 2013	February 11, 2013	Red	Platform Rehab	Twinbrook – Shady Grove
February 8, 2013	February 11, 2013	Red	Platform Rehab	Rhode Island Ave - Takoma

Outages scheduled as of January 2, 2013



Single Tracking Operations

Start	Finish	Line	Type	Location
February 11, 2013	February 14, 2013	Red	Fastener Renewal	Van Ness – Friendship Heights
February 11, 2013	February 28, 2013	Red	Platform Rehab	Rhode Island Ave - Takoma
February 15, 2013	February 19, 2013	Red	Platform Rehab	Rhode Island Ave - Takoma
February 19, 2013	February 21, 2013	Red	Platform Rehab	Twinbrook – Shady Grove
February 19, 2013	February 22, 2013	Orange / Blue	Dome Rehab	Eastern Market to Stadium Armory
February 19, 2013	March 28, 2013	Yellow / Blue	3 rd Rail	National Airport – Braddock Road
February 22, 2013	February 25, 2013	Red	Platform Rehab	Rhode Island Ave - Takoma

Outages scheduled as of January 2, 2013



Single Tracking Operations

Start	Finish	Line	Type	Location
February 22, 2013	February 25, 2013	Orange	Platform Rehab/ Fastener Renewal	Stadium Armory - Cheverly
February 22, 2013	February 25, 2013	Green	Test Track Project	College Park - Greenbelt
February 22, 2013	February 25, 2013	Red	Rail Renewal	Van Ness – Friendship Heights
February 25, 2013	February 28, 2013	Orange	DTP Operational Testing	East Falls Church – West Falls Church
February 25, 2013	March 1, 2013	Orange / Blue	Dome Rehab	Eastern Market to Stadium Armory
February 25, 2013	March 14, 2013	Green / Yellow	Cameras and Ceiling Tile Installation	Mt. Vernon Square – L’Enfant Plaza
March 1, 2013	March 4, 2013	Orange	Platform Rehab/ Fastener Renewal	Stadium Armory - Cheverly

Outages scheduled as of January 2, 2013



Single Tracking Operations

Start	Finish	Line	Type	Location
March 8, 2013	March 11, 2013	Orange	Platform Rehab/ Fastener Renewal	Stadium Armory - Cheverly
March 15, 2013	March 18, 2013	Orange	Platform Rehab/ Fastener Renewal	Stadium Armory - Cheverly

Outages scheduled as of January 2, 2013



Total Shutdowns

Start	Finish	Line	Location
January 11, 2013	January 14, 2013	Blue	Rosslyn - Pentagon
January 19, 2013	January 22, 2013	No Shutdown Martin Luther King/Presidential Inauguration	
January 25, 2013	January 28, 2013	Red	Dupont Circle – Rhode Island Avenue
February 01, 2013	February 04, 2013	Blue / Orange	Federal Center SW – Cheverly & Benning Road
February 15, 2013	February 19, 2013	Blue / Orange	Stadium Armory – Cheverly & Largo Town Center
February 15, 2013	February 19, 2013	Green	College Park – Greenbelt

Outages scheduled as of January 2, 2013



Total Shutdowns

Start	Finish	Line	Location
February 22, 2013	February 25, 2013	Orange	Ballston – Vienna
March 01, 2013	March 04, 2013	Blue / Yellow	Crystal City – Braddock Road
March 01, 2013	March 04, 2013	Red	Brookland - Takoma
March 08, 2013	March 11, 2013	Blue / Orange	Federal Center SW - Minnesota Avenue & Benning Road
March 15, 2013	March 18, 2013	Red	NoMa–Gallaudet U - Takoma
March 15, 2013	March 18, 2013	Green	Congress Heights – Branch Ave
March 22, 2013	March 25, 2013	No Shutdown Cherry Blossoms	

Outages scheduled as of January 2, 2013



Total Shutdowns

Start	Finish	Line	Location
March 29, 2013	April 1, 2013		No Shutdown Cherry Blossoms
April 5, 2013	April 8, 2013		No Shutdown Cherry Blossoms
April 12, 2013	April 15, 2013		No Shutdown Cherry Blossoms
April 19, 2013	April 22, 2013	Orange	Rosslyn – Virginia Square
April 26, 2013	April 29, 2013	Red	NoMa–Gallaudet U - Takoma
May 3, 2013	May 6, 2013	Green	Congress Heights – Branch Avenue
May 10, 2013	May 13, 2013	Orange	Ballston - Vienna

Outages scheduled as of January 2, 2013



Total Shutdowns

Start	Finish	Line	Location
May 17, 2013	May 20, 2013	Green	College Park - Greenbelt
May 17, 2013	May 20, 2013	Orange	Clarendon – East Falls Church
May 24, 2013	May 28, 2013	Orange	East Falls Church - Vienna
May 24, 2013	May 28, 2013	Red	Twinbrook – Shady Grove
May 31, 2013	June 3, 2013	Red	Metro Center – Woodley Park Zoo
June 7, 2013	June 10, 2013	Green / Yellow	Shaw-Howard U - Georgia Ave
June 14, 2013	June 17, 2013	Red	Takoma – Forest Glen

Outages scheduled as of January 2, 2013



Total Shutdowns

Start	Finish	Line	Location
June 21, 2013	June 24, 2013	Red	Takoma – Forest Glen
June 28, 2013	July 1, 2013	Green	College Park - Greenbelt
July 3, 2013	July 5, 2013	No Shutdown 4 th of July	

Outages scheduled as of January 2, 2013