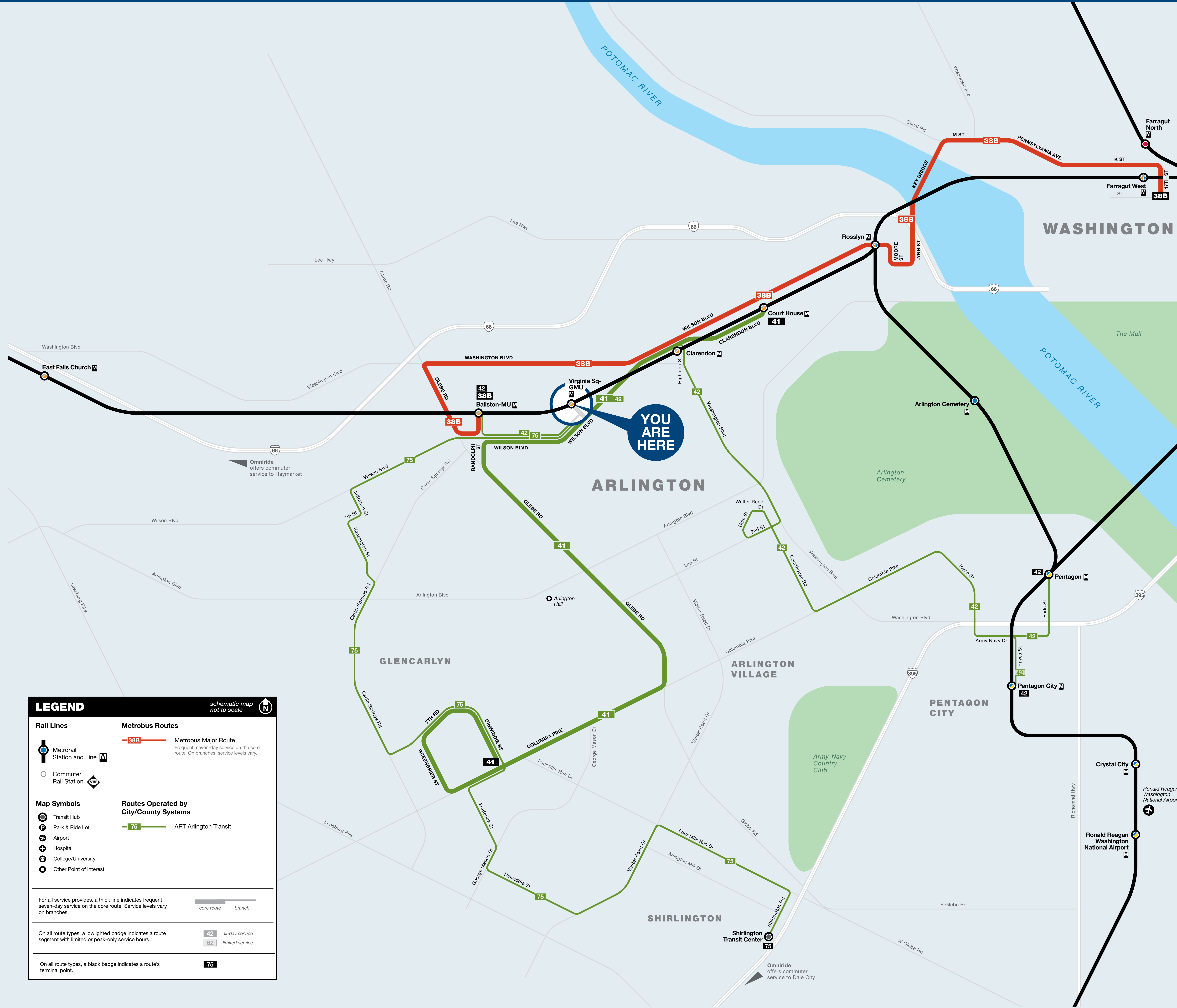




Bus Service from Virginia Sq-GMU



BUS SERVICE AND BOARDING LOCATIONS

The table shows approximate minutes between buses; check schedules for full details

ROUTE	DESTINATION	BOARD AT BUS STOP	MONDAY TO FRIDAY				SATURDAY		SUNDAY	
			AM RUSH	MIDDAY	PM RUSH	EVENING	DAY	EVENING	DAY	EVENING
BALLSTON-FARRAGUT SQUARE LINE										
38B	Ballston-MU		15-20	15	15	15-30	30	30	30	30
38B	Farragut North & West		15	15	15	15-30	30	30	30	30
ART-ARLINGTON TRANSIT										
41	Arlington Mill		15	15	15	23	15-20	20-27	15-20	15-20
41	Court House		15	15	15	23	15-20	20-27	15-20	15-20
42	Ballston-MU		15	30	15	--	30	--	30	--
42	Pentagon (weekdays), Pentagon City (weekends)		15	30	15	--	30	--	30	--
75	Shirlington		30	40	30	40	--	--	--	--
OMNIRIDE										
622	Haymarket		--	--	4 trips	--	--	--	--	--
D-200	Woodbridge, Dale City via Pentagon City		--	--	6 trips	--	--	--	--	--

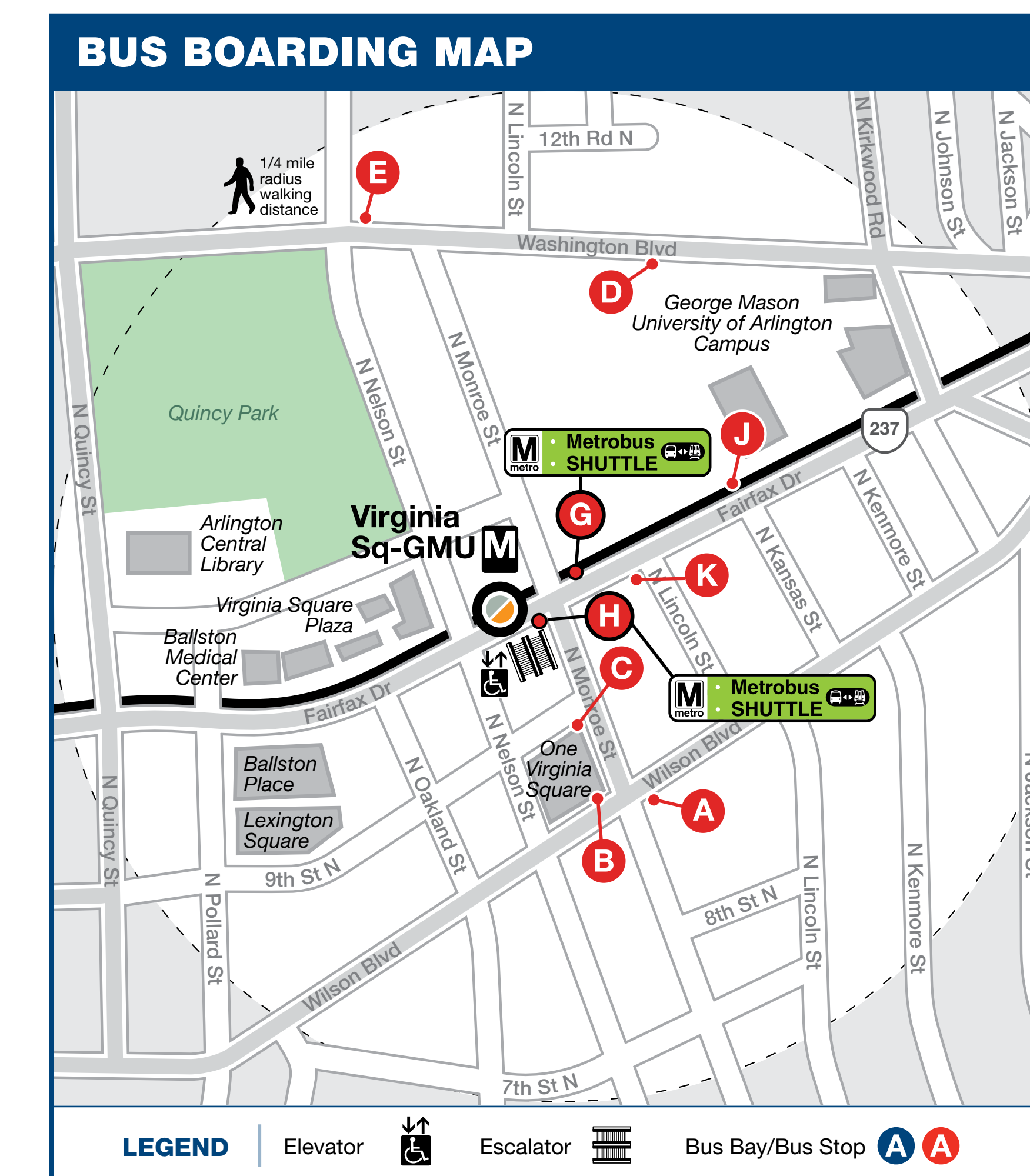


towards Ballston-MU

towards Clarendon

During track work and/or rail shutdown events, this bus stop will also be served by Metro shuttle buses.

NOTE: The lettered red discs in the table and on the boarding map identify bus stops near this station. The letters ARE NOT displayed at the actual bus stops.



metroAlerts

Through MetroAlerts, you can be notified of Metro service disruptions via email or text messages. MetroAlerts can be sent to computers, cellular phones, pagers or personal digital assistants capable of receiving data. MetroAlerts are limited to 140 characters to prevent them from being truncated when received as text messages. If further information on the incident is available, it is published on the website and a link to that information is included in the MetroAlert.

KNOW MORE. KNOW FIRST.
Sign up today at wmata.com/MetroAlerts

information wmata.com | 202-637-7000 | 202-638-3780

busETA and General Inquiries

Para busETA y información general, llame al 202-637-7000 (TTY 202-638-3780) o visite wmata.com.

정보나 busETA 또는 언어 지원 관련 문의는 202-637-7000 (TTY 202-638-3780) 으로 전화하십시오. 스페인이 문의는 7을 누르시고, 기타 언어 관련 문의는 88을 누른 후 5을 누르십시오. 또는 wmata.com 을 방문하십시오.

Sign up today at wmata.com/MetroAlerts

Metro is accessible.
Metro es accesible.
메트로는 접속 가능합니다.

