



Draft Visionary Network

The Visionary Network — the draft future bus network that better meets our region’s needs — was developed using public input, analysis of the existing bus system, data about where and how people travel, and planned and existing socio-economic characteristics of the community. This draft network, built in coordination with our jurisdictional partners, connects the region, improves the customer and operator experience, and builds equity across the region.

The Bus Network the Region Needs



More service all day/all week



Expanded Frequent Service Network



Increased crosstown and cross-county connections



Connect key destinations, including transit hubs, with direct, frequent routes



Extending service beyond jurisdictional borders

The Draft Visionary Network...

Grows Bus Ridership

40-45k weekday
30-35k Sat & Sun
Additional Trips

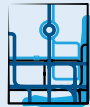
Avoiding 14,570 metric tons of GHG emissions a year



Provides more access to high frequency service to more people at more times of day



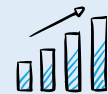
73% more on Saturdays
64% more on Sundays



85% more routes with 12 min or better service



60% more during the weekday midday



300% more routes with 12-20 min service



Provides service to people where and when they need it

- 123k and 208k more residents on Saturdays and Sundays will have bus service
- 1.1M residents across the region will have 24-hour bus service and 307k more will have late-night bus service (10pm to 2am)



Provides convenient transit options for more of the trips people make

- Improvements will save bus customers almost 20,000 hours every weekday
- 20% more trips in the region could be made conveniently by transit



Provides access to more key destinations and jobs

- Residents will be able to access an additional 13k jobs within 60 minutes on transit

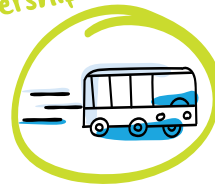


Provides more services in dedicated/prioritized facilities

- Maximizes jurisdictional partner investments in bus priority infrastructure makes service faster and more reliable to operate

The Draft Visionary Network in Maryland...

Grows Bus Ridership



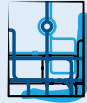
12k weekday
10k Sat & Sun
Additional Trips



Provides more access to high frequency service to more people at more times of day



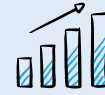
79% more on Saturdays
42% more on Sundays



67% more routes with 12 min or better service



79% more during the weekday midday



500% more routes with 20 min service



Provides service to people where and when they need it

- 103k and 190k more residents in Maryland will have bus service on Saturdays and Sundays
- 371k residents in Maryland will have 24-hour bus service



Provides convenient transit options for more of the trips people make

- Improvements will save bus customers in Maryland almost 3,300 hours every weekday
- 19% more trips in Maryland could be made conveniently by transit



Provides more service in dedicated/prioritized facilities

- Increases the amount of service in dedicated facilities in Maryland by making service faster and more reliable to operate

Examples of New and Improved Connections in Maryland



Connect existing and future rail lines



- New route between New Carrollton, Addison, and Suitland stations, extending the reach of the Purple Line



Connect to transit hubs



- Enhanced connections at Takoma-Langley
- New route connecting Tysons to Bethesda



Connect to hospitals, schools and employment



- White Oak Medical Center hub
- More connections to National Harbor



Connect adjacent neighborhoods and across borders



- Hyattsville, MD → Anacostia, DC
- Chevy Chase, DC → Chevy Chase, MD



Connect around the clock



- 24-hour services to major destinations such as National Harbor, Largo, College Park, Silver Spring, Wheaton, and Rockville