

Northern Bus Garage Reconstruction Project

VIRTUAL COMMUNITY MEETING #2:
SECTION 106 CONSULTING PARTIES
MEETING – DRAFT DESIGN CONVERSATION

11/02/2020



Agenda

- I. Project Team Introductions
- II. Community Input Process
- III. Federal Transit Administration Role
- IV. Exterior Design Survey
- V. Metro's Art in Transit Program
- VI. Next Steps



I. Project Team

Diana Levy
Director, Capital
Delivery
(WMATA)

Ann Chisholm
Government
Relations
(WMATA)

Gail Ribas
Senior Director
Communications
(WMATA)

Jim Ashe
Environmental
Coordinator
(WMATA)

Laurent Odde
Art in Transit
Program Manager
(WMATA)

Dan Koenig
Community
Planner
(FTA)

David Wehe
Project Manager
(WMATA rep)

Donzell Robinson
Communications
Consultant
(JSA)

Phil Sheridan
Project Director
(CLARK)

Sean Beachy
Senior Architect
(CLARK/WENDEL)

Emily Savoca
Architect
(CLARK/WENDEL)

II. Community Input Process

Meeting #1: Project Design Update

- Introduced three exterior design options; launched public survey
- Meeting presentation, video and Q&A posted online at wmata.com/NorthernBusGarage

Meeting #2: Draft Design Conversation

- Meeting serves two purposes:
 - Request public comment on exterior design options
 - Request invited Section 106 Consulting Parties to comment on historic properties
- Environmental issues will be the focus of Meeting #3
- Final survey results, meeting presentation and video will be posted online

Meeting #4: Final Design Presentation

- New exterior design concept (based on community input) scheduled to be presented to community
- Following meeting, new concept scheduled to be presented at Historic Preservation Review Board (HPRB) meeting in December



Northern Bus Garage Replacement

VIRTUAL COMMUNITY ENGAGEMENT MEETINGS

MEETING #1 Tuesday, October 13
Project Design Update **COMPLETED**

 MEETING #2 Monday, November 2
Draft Design Conversation

 MEETING #3 Tuesday, November 10
Environmental Conversation

 MEETING #4 Tuesday, November 17
Final Design Presentation

All meetings begin at 6 pm.
For more information, visit wmata.com/NorthernBusGarage.

Public participation is solicited without regard to race, color, national origin, age, gender, religion, disability or family status. To request special accommodations under the Americans with Disabilities Act, ASL or other language interpretation services (free of charge), contact JSA, LLC at 202-610-0005 or send a message to info@jsallc.com at least 48 hours prior to the meeting date, so necessary arrangements can be made.



Federal Transit Administration (FTA) Role

- WMATA is seeking federal funds from FTA; therefore, the project is subject to Section 106 of the National Historic Preservation Act
- Section 106 of the National Historic Preservation Act requires FTA to consider views of invited Consulting Parties and the public on identification of historic properties and the effects of the project on historic properties, and to seek concurrence with the State Historic Preservation Officer
- FTA is specifically seeking comment as it relates to the adverse effect pursuant to the National Historic Preservation Act on the Northern Bus Garage

Section 106 Process

COMPLETED ACTIONS

- Section 106 initiated (April 2019)
- Consulting parties identified and invited
- Area of Potential Effects identified (April 2019)
- Determination that proposed reconstruction would constitute an “Adverse Effect” on the Northern Bus Garage, which is listed on the National Register of Historic Places as the Decatur Street Car Barn (April 2019)

REMAINING STEPS

- Identify potential minimization and mitigation measures in response to the “Adverse Effect” determination
- Receive and consider Consulting Party comments
- Execute a Memorandum of Agreement to document mitigation and minimization measures to resolve adverse effects

Existing Conditions



Discussion Period 1

- Seeking comments about the effects to the historic structure and proposals to mitigate and minimize effects to the structures from Consulting Parties
- Seeking questions and comments about the exterior design from the community
 - Please submit your questions or a request for comment via the 'Chat' feature located at the bottom of your screen. You will be called on to ask your question live in the meeting.
 - If the project team is unable to respond to your question during this meeting, you may contact us at MCAP_NBG_Reconstruction_Project@wmata.com
 - Summary of the Q&A will be posted to: wmata.com/northernbusgarage

Exterior Design Survey

- Presenting interim findings based on responses received October 13 – 27 (233 survey responses)
- Survey responses indicate Option 3 is the most preferred design option
- High preference for options with public art murals
- View that includes the historical façade chosen as most impactful to overall design assessment
- Final survey results, including summary of open-ended comments, will be available at wmata.com/NorthernBusGarage

Northern Bus Garage Reconstruction: Exterior Design Survey

Preference for View 1 – Corner of Buchanan St NW and 14th St NW



EXISTING - VIEW 1



OPTION 1 - VIEW 1



OPTION 2 - VIEW 1



OPTION 3 - VIEW 1



Preference for View 2 – On 14th St NW, facing Southeast



EXISTING - VIEW 2



12%



OPTION 1 - VIEW 2



5%



OPTION 2 - VIEW 2



83%



OPTION 3 - VIEW 2



Preference for View 3 – Corner of 14th St NW and Decatur St NW



EXISTING - VIEW 3



OPTION 1 - VIEW 3

14%



OPTION 2 - VIEW 3



9%



OPTION 3 - VIEW 3

77%



Northern Bus Garage Reconstruction: Exterior Design Survey

Preference for View 4 – Corner of Iowa Ave NW & Arkansas Ave NW, facing Northwest



wendel EXISTING - VIEW 4 CLARK STV 100



wendel OPTION 1 - VIEW 4 CLARK STV 100



wendel OPTION 2 - VIEW 4 CLARK STV 100



wendel OPTION 3 - VIEW 4 CLARK STV 100

Preference for View 5 – Corner of Iowa Ave NW & Arkansas Ave NW, facing Southwest

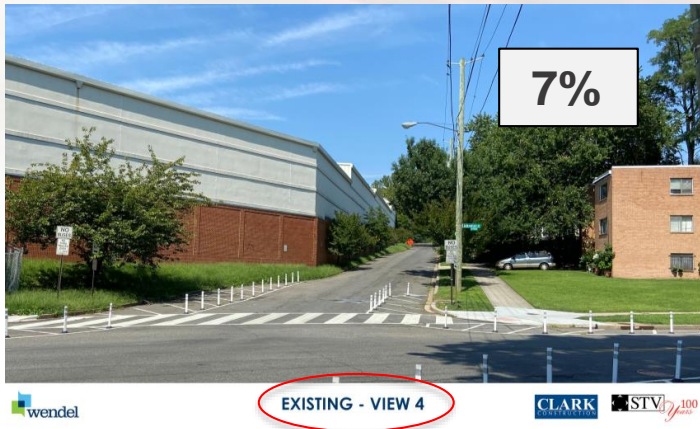
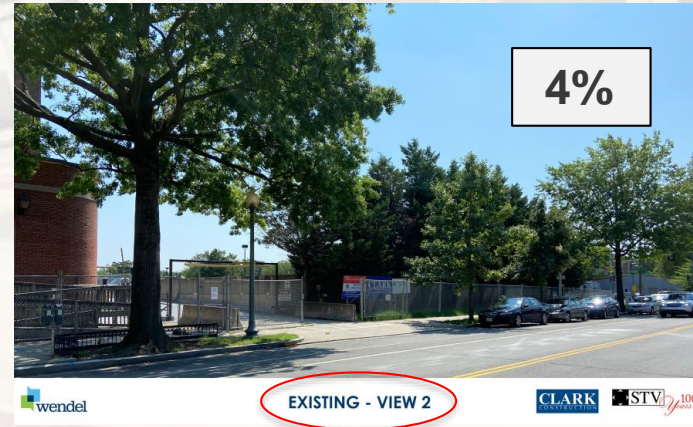
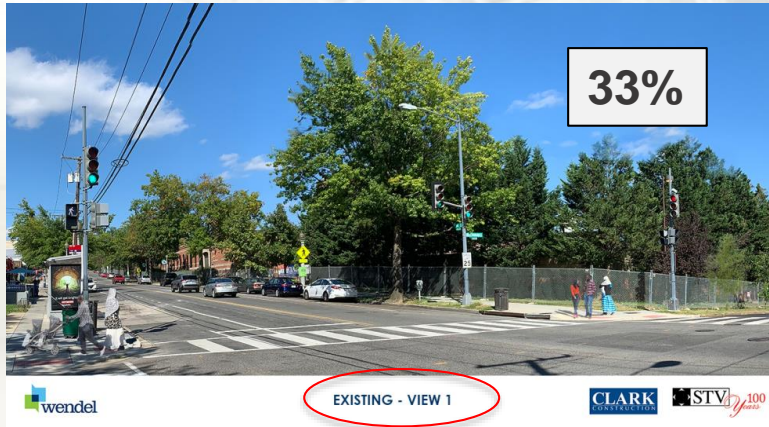


Preference for View 6 – Corner of Buchanan St NW and Arkansas Ave NW



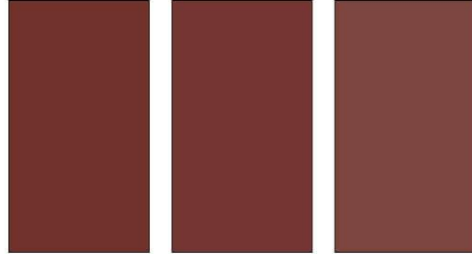
Northern Bus Garage Reconstruction: Exterior Design Survey

Q: Which Perspective is Most Important to your Assessment of the Overall Design?



Option 3 - Materials

MORIN METAL PANELS- MATRIX SERIES
INSTALLATION #1 - PANEL COLORS



RED PANEL 1

RED PANEL 2

RED PANEL 3

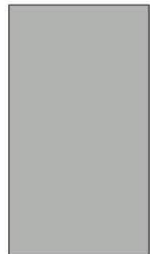
INSTALLATION #1 - PANEL PROFILES



MORIN - MX 6.0

MORIN - MX 9.0

MORIN METAL PANELS- MATRIX SERIES
INSTALLATION #2 - PANEL COLORS



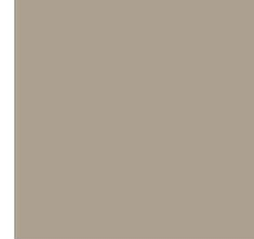
GREY PANEL

HOLLOW METAL DOORS AND FRAMES



BENJAMIN MOORE - CABIN FEVER 1540

ALUMINUM CURTAINWALL SYSTEM



KAWNEER
FINISH - CHAMPAGNE ANODIZED

INSULATED WINDOW PANELS



MAPES
FINISH - LIGHT BRONZE ANODIZED

GROUND FACE



BELDEN - 661 SMOOTH
RUNNING BOND, MODULAR BRICK

BRICK

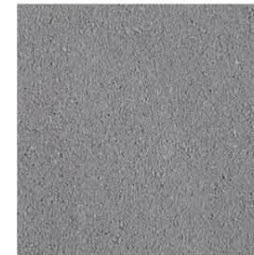


GLEN-GERY - EBONITE SMOOTH
RUNNING BOND, MODULAR BRICK



GLEN-GERY - EBONITE VELOUR
DETAILING LOCATIONS, MODULAR BRICK

CAST STONE



READING ROCK - LIGHT GRAY
WALL CAPS AND WATER TABLES

Discussion Period 2

- Seeking comments about the effects to the historic structure and proposals to mitigate and minimize effects to the structures from Consulting Parties
- Seeking questions and comments about the exterior design from the community
 - Please submit your questions or a request for comment via the 'Chat' feature located at the bottom of your screen. You will be called on to ask your question live in the meeting.
 - If the project team is unable to respond to your question during this meeting, you may contact us at MCAP_NBG_Reconstruction_Project@wmata.com
 - Summary of the Q&A will be posted to: wmata.com/northernbusgarage

Metro's Art in Transit Program

- Incorporates visual and performing arts at stations and facilities to enhance the experience of the public and transit riders since 1988
- Exhibits aesthetically attractive public artworks that capture the Authority's mission and reflect the artistic, cultural and/or historical interests of the surrounding communities
- Works with visual and performing artists, other arts professionals, architects, engineers, community representatives, jurisdictional arts councils
- The Art in Transit project is not a part of the Section 106 consultation



Selection Process and Criteria for Permanent Artworks

SELECTION PROCESS

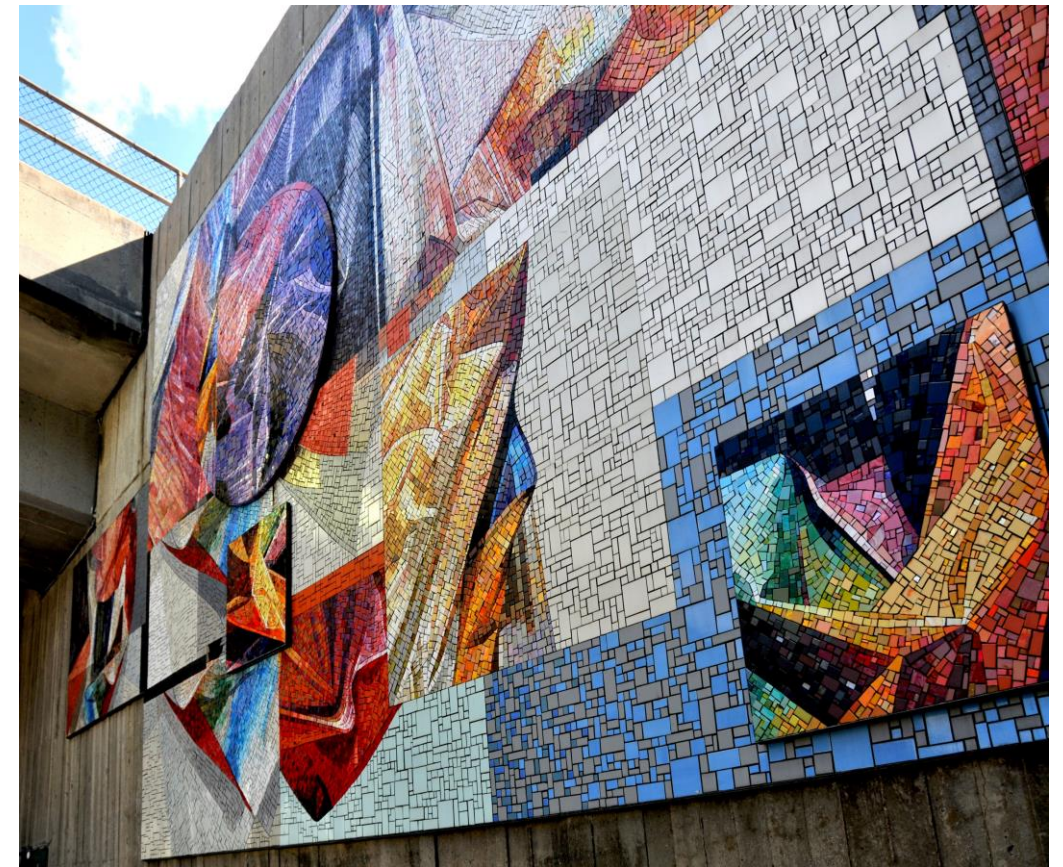
- Call for Artists
- Artwork Review Panel
- Recommendation to GM/CEO
- Final approval

CRITERIA

- Quality of the work
- Site-specificity
- Durability of materials
- Originality of approaches and methodologies
- Artist's ability to complete the project

Art in Transit: Sample Artworks

Takoma Metro Station
From Model to Rainbow, 2011
Sam Gilliam



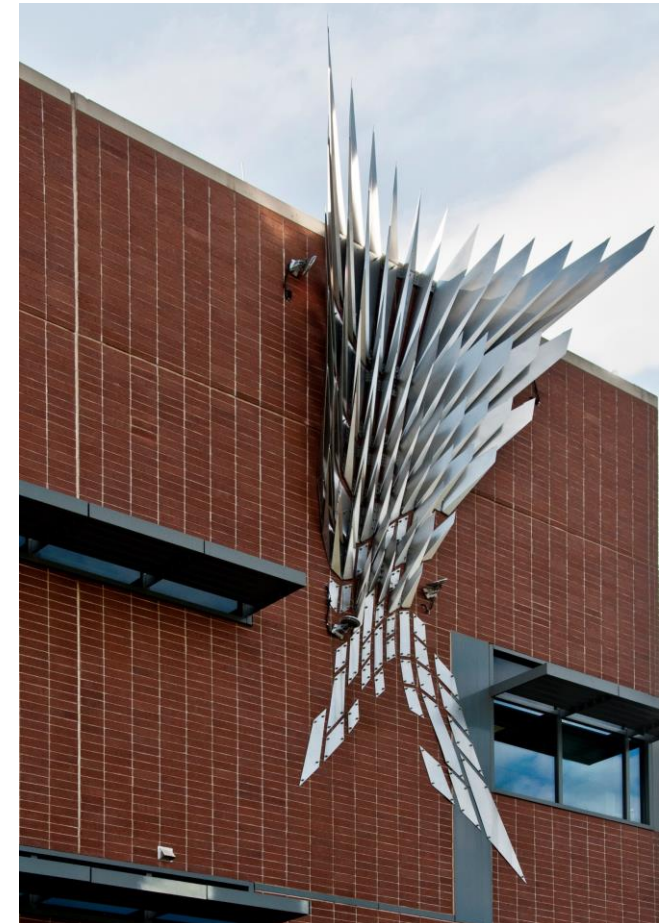
Art in Transit: Sample Artworks

Shepherd Parkway Bus Facility
North Star, 2012
Anne Gardner

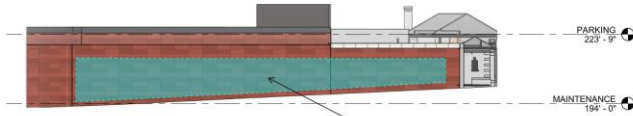


Art in Transit: Sample Artworks

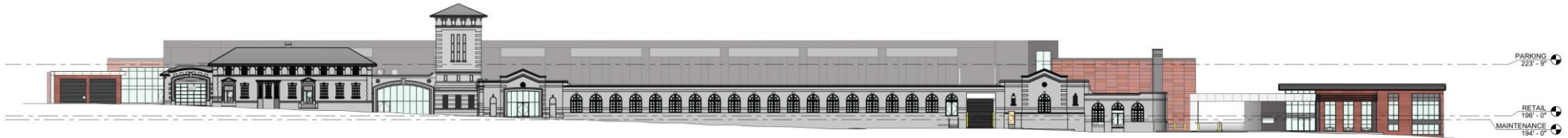
MTPD District II
Plume #3, 2014
Volkan Alkanoglu



Option 3: Potential Locations for Art in Transit



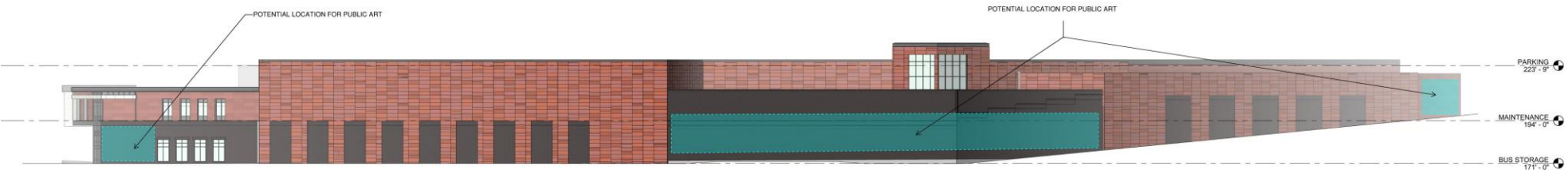
1 ELEVATION - OVERALL - NORTH
3/8" = 1'-0"



2 ELEVATION - OVERALL - WEST
3/8" = 1'-0"



3 ELEVATION - OVERALL - SOUTH
3/8" = 1'-0"



4 ELEVATION - OVERALL - EAST
3/8" = 1'-0"

Discussion Period 3

- Seeking comments about the effects to the historic structure and proposals to mitigate and minimize effects to the structures from Consulting Parties
- Seeking questions and comments about the exterior design from the community
 - Please submit your questions or a request for comment via the 'Chat' feature located at the bottom of your screen. You will be called on to ask your question live in the meeting.
 - If the project team is unable to respond to your question during this meeting, you may contact us at MCAP_NBG_Reconstruction_Project@wmata.com
 - Summary of the Q&A will be posted to: wmata.com/northernbusgarage

VI. Next Steps for Project

November 2020

Conduct community meetings on environmental issues (11/10) and new design (11/17)

November 2020

Engage w/ DDOT and provide update on the Garage designs

December 2020

Present final revised design concept to Historic Preservation Review Board

January 2021

Anticipated to begin Mayor's Agent process on demolition permit

- Updates posted to wmata.com/NorthernBusGarage and shared via email
- Email MCAP_NBG_Reconstruction_Project@wmata.com to join the project's community contact list or request additional information