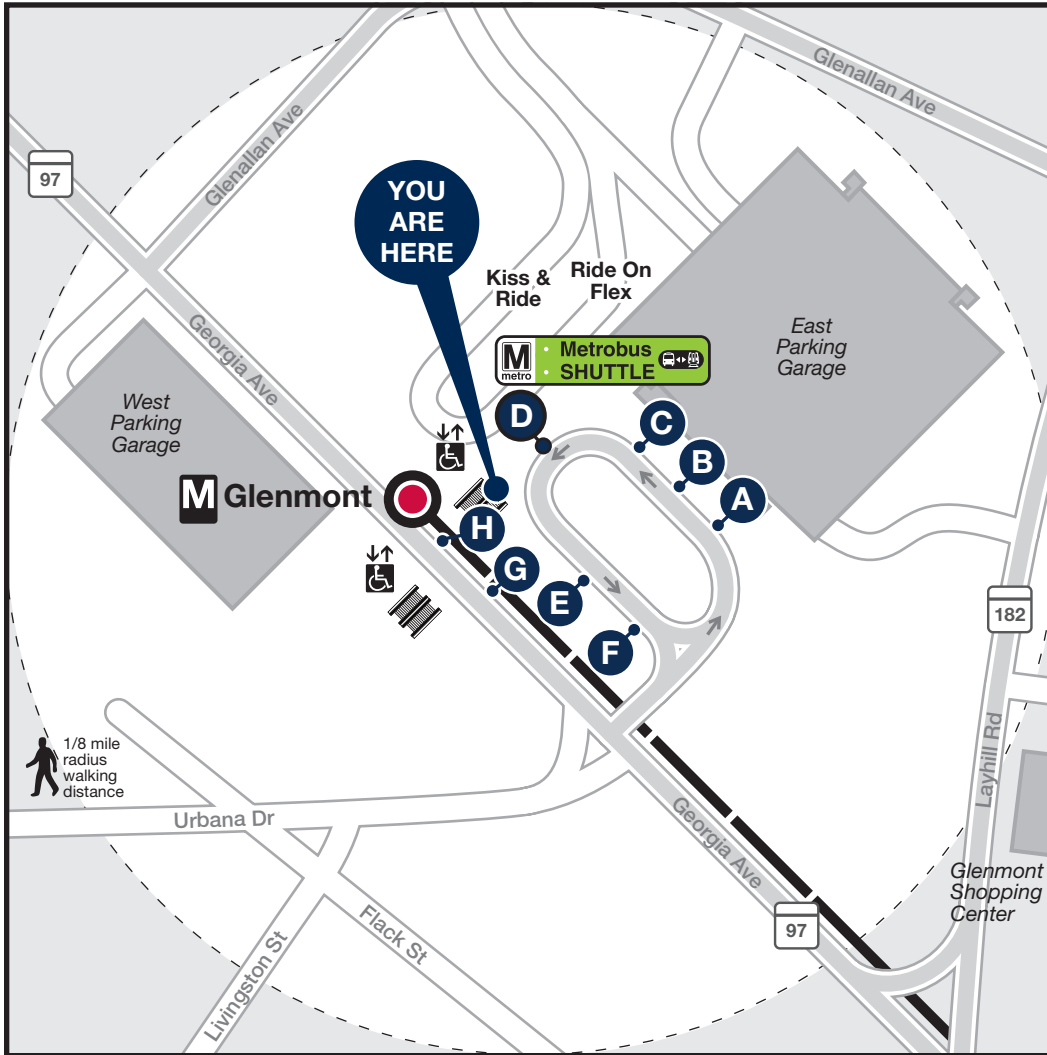




# Station Vicinity Map Glenmont



## LEGEND



- A** Bus Stop (on the street)
- A** Bus Bay (at the station)

The lettered discs on this map will help you locate the bus stop or bay near this station. Be advised the letters are not displayed on the street bus stops.

- Elevator
- Escalator
- Bus Route
- Metrorail Station and line

55.034.EVAC-0622



In the event of an emergency, this bus stop will also be served by shuttle buses.

### Approximate walking distance to the next Metro Station from this exit

There are no stations within a reasonable walking distance.



Frequent service is available on selected lines. Look for the *Frequent Service* icon.

Buses run frequently every day between 7:00am and 9:00pm. Less frequent service runs at early morning and late night times.

## BUS SERVICE AND BOARDING LOCATIONS

Route	Destination	Board at
<b>METROBUS FREQUENT SERVICE</b>		
<b>Y2 Y7</b> <b>Y8</b>	Georgia Ave & Connecticut Ave	<b>H</b>
<b>Y2 Y7</b> <b>Y8</b>	Silver Spring <b>M</b>	<b>D</b>
<b>METROBUS</b>		
<b>C8</b>	College Park-U of Md <b>M</b>	<b>E</b>
<b>C8</b>	White Flint <b>M</b>	<b>F</b>
<b>Y2 Y8</b>	Medstar Montgomery Medical Center	<b>H</b>

Route	Destination	Board at
<b>Y7</b>	ICC Park & Ride via Leisure World	<b>H</b>
<b>Y8</b>	Medstar Montgomery Medical Ctr via Leisure World	<b>H</b>
<b>RIDE ON-MONTGOMERY COUNTY</b>		
<b>10</b>	Hillandale	<b>F</b>
<b>10</b>	Twinbrook <b>M</b>	<b>F</b>
<b>26</b>	Montgomery Mall Transit Center	<b>B</b>
<b>31</b>	Wheaton <b>M</b>	<b>C</b>
<b>33</b>	Medical Center <b>M</b>	<b>A</b>

Route	Destination	Board at
<b>39</b>	Briggs Chaney Park & Ride	<b>B</b>
<b>41</b>	Aspen Hill	<b>B</b>
<b>49</b>	Rockville <b>M</b>	<b>C</b>
<b>51</b>	Norbeck Park & Ride	<b>G</b>
<b>53</b>	Shady Grove <b>M</b>	<b>A</b>
<b>FLEX</b>	Glenmont-Wheaton Zone	

Subject to change without notice. Esta información puede cambiar.

