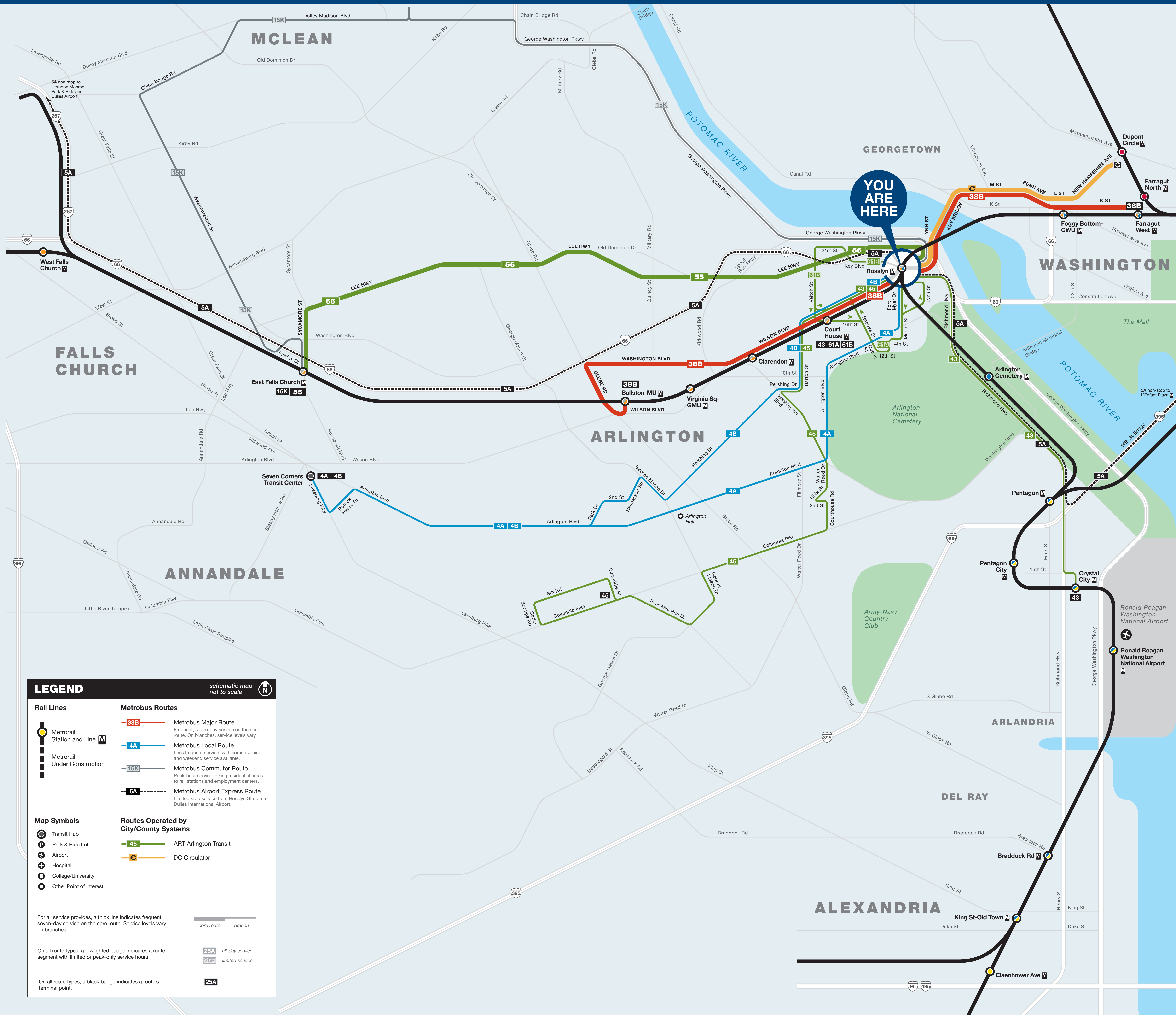




# Bus Service from Rosslyn



**LEGEND** schematic map not to scale

**Rail Lines**

- Metrorail Station and Line M
- Metrorail Under Construction

**Map Symbols**

- Transit Hub
- Park & Ride Lot
- Airport
- Hospital
- College/University
- Other Point of Interest

**Metrobus Routes**

- 3BB** Metrobus Major Route: Frequent, seven-day service on the core route. On branches, service levels vary.
- 4A** Metrobus Local Route: Less frequent service, with some evening and weekend service available.
- 15K** Metrobus Commuter Route: Peak-hour service linking residential areas to rail stations and employment centers.
- 5A** Metrobus Airport Express Route: Limited stop service from Rosslyn Station to Dulles International Airport.

**Routes Operated by City/County Systems**

- 45** ART Arlington Transit
- C** DC Circulator

For all service providers, a thick line indicates frequent, seven-day service on the core route. Service levels vary on branches.

On all route types, a lowlighted badge indicates a route segment with limited or peak-only service hours.

On all route types, a black badge indicates a route's terminal point.

25A all-day service  
25E limited service  
25A

## BUS SERVICE AND BOARDING LOCATIONS

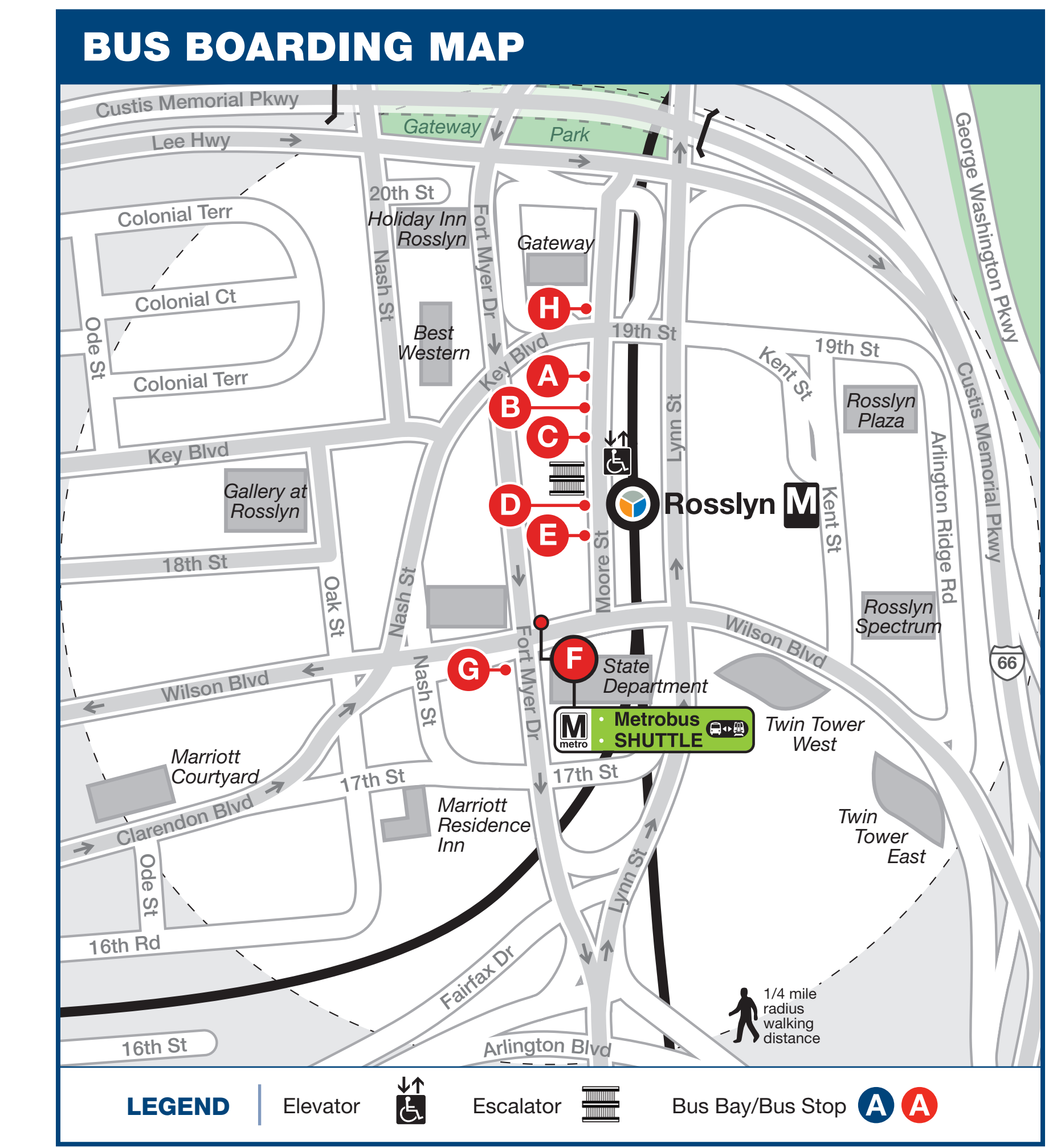
The table shows approximate minutes between buses; check schedules for full details

ROUTE	DESTINATION	BOARD AT BUS STOP	MONDAY TO FRIDAY				SATURDAY		SUNDAY	
			AM RUSH	MIDDAY	PM RUSH	EVENING	DAY	EVENING	DAY	EVENING
<b>PERSHING DR-ARLINGTON BLVD LINE</b>										
4A	Seven Corners via Arlington Blvd	D	30	--	30	--	--	--	--	--
4B	Seven Corners via Court House M	D	30	30	30	30	45	45	60	60
<b>DC-DULLES LINE</b>										
5A	Dulles Airport	B	30-35	40	30	35-40	60	60	60	60
5A	L'Enfant Plaza M	B	30-35	40	30	35-40	60	60	60	60
<b>CHAIN BRIDGE ROAD LINE</b>										
15K	East Falls Church M	B	1 trip	--	--	--	--	--	--	--
<b>BALLSTON-FARRAGUT SQUARE LINE</b>										
3BB	Ballston-MU M	C	15	20	15	30	30	30	30	30
3BB	Farragut N&W M	C	12	20	15	30	30	30	30	30
<b>ART-ARLINGTON TRANSIT</b>										
43	Crystal City M	G	10	20	10	20	--	--	--	--
43	Court House M	F	10	20	10	20	--	--	--	--
45	Arlington Mill	E	20-30	30	20	20-30	30	30	30	30
55	East Falls Church M	A	12	15	12-15	15-30	20	20-30	30	30
61A	Court House M - Clockwise	E	25	--	25	--	--	--	--	--
61B	Court House M - Counter-Clockwise	E	25	--	25	--	--	--	--	--
<b>DC CIRCULATOR</b>										
C	Dupont Circle M	H	10	10	10	10	10	10	10	10
<b>GEORGETOWN UNIVERSITY TRANSPORTATION SHUTTLE</b>										
GUTS	Georgetown University	H	10	20	10	20	--	--	--	--



During track work and/or rail shutdown events, this bus stop will also be served by Metro shuttle buses.

NOTE: The lettered red discs in the table and on the boarding map identify bus stops near this station. The letters ARE NOT displayed at the actual bus stops.



**metroAlerts**

Through MetroAlerts, you can be notified of Metro service disruptions via email or text messages. MetroAlerts can be sent to computers, cellular phones, pagers or personal digital assistants capable of receiving data. MetroAlerts are limited to 140 characters to prevent them from being truncated when received as text messages. If further information on the incident is available, it is published on the website and a link to that information is included in the MetroAlert.

**KNOW MORE. KNOW FIRST.**  
Sign up today at [wmata.com/MetroAlerts](http://wmata.com/MetroAlerts)

**information** [wmata.com](http://wmata.com) | 202-637-7000 | 202-638-3780  
 busETA and General Inquiries

Para busETA y información general, llame al 202-637-7000 (TTY 202-638-3780) o visite [wmata.com](http://wmata.com).

정보나 busETA 또는 언어 지원 관련 문의는 202-637-7000 (TTY 202-638-3780) 으로 전화하십시오. 스페인이 문의는 7을 누르시고, 기타 언어 관련 문의는 88을 누른 후 5를 누르십시오. 또는 [wmata.com](http://wmata.com) 을 방문하십시오.

**metroAlerts**  
 Sign up today at [wmata.com/MetroAlerts](http://wmata.com/MetroAlerts)

Metro is accessible.  
 Metro es accesible.  
 메트로는 접속 가능합니다.

